

Milano-Italia-europan 12 RE-INHABIT AN URBAN FABRIC, FILTER BETWEEN CITY AND COUNTRY



CATEGORY urban/architectural

TEAM REPRESENTATIVE Architect

LOCATION Milano **SITE** Porto di Mare

POPULATION City 1 324 000 inhab. Conurbation 20 000 inhab.

STRATEGIC SITE approx 490 ha **SITE OF PROJECT** 36+72 ha

SITE PROPOSED BY Councilor for Urbanism, Ada Lucia De Cesaris

OWNER OF THE SITE Municipality of Milan

COMMISSION AFTER COMPETITION

The project will be approved according to PGT and considering the reality and characteristics of the place. Under private financing for the implementation of the intervention through negotiated procedure through the integrated programme of intervention (PII) that will identify a specifically the scopes of intervention of private entities.

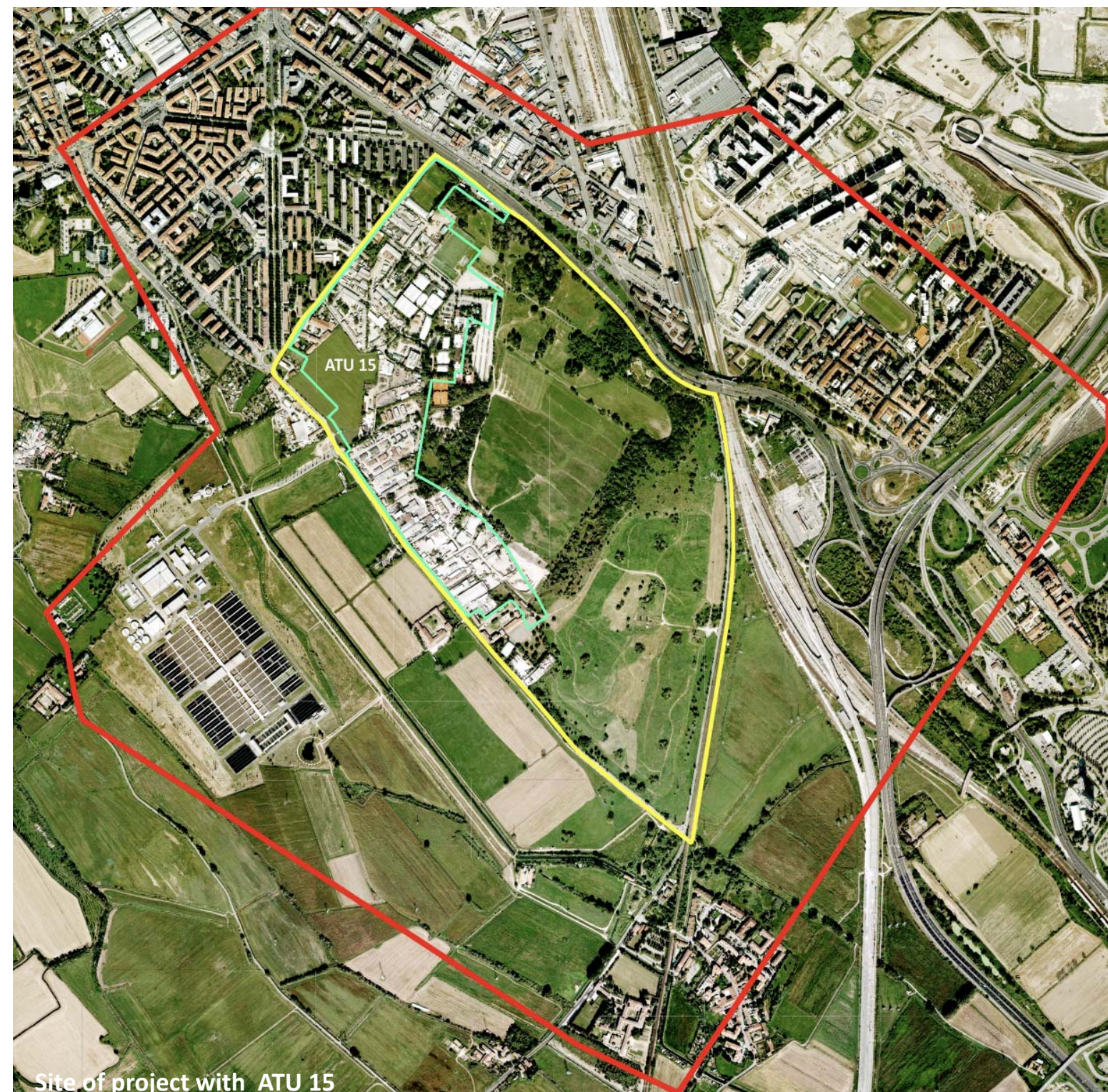
HOW THE SITE CAN CONTRIBUTE TO THE ADAPTABLE CITY?

Due to its characteristics, the complexity of "Porto di Mare" site offers the opportunity to activate a public debate around the area's transformation. The architects are called to find solutions that involve and integrate the environmental and social issues, which are at the same time constraints and priorities for the development of future interventions. For reasons related to the acquisition of the area, as well as for the time required to environmental claim, the site might not be available simultaneously in a single lot. It is necessary that the project is perfectly integrated with the concept of time adaptability, also keeping a landscape homogeneity and overall character of usability and security.

CITY STRATEGY

The Administration aims to implement a strategy of integrated and sustainable urban development, starting from the relationship between "fulls and empty spaces", limiting construction and ensuring soil protection as a public resource. The PGT highlights the concept of public city, focusing on "urban empty spaces", as projects opportunities able to produce innovation, urban quality and structuring function, ecological, environmental, to better enhance the „full“ of the built part of the city. Priorities for quality urban space are the permeability, reducing land consumption and redefinition of services. The PGT articulates synergic choices to realize a proposal that includes a new social-housing offer with wide spaces for sport and green, respecting the rural reality and in connection with the Park.

Milano-Italia-european 12 RE-INHABIT AN URBAN FABRIC, FILTER BETWEEN CITY AND COUNTRY



SITE DEFINITION

The site, on the sidelines of the consolidated urban fabric, in the South-Eastern city zone, leads in the system of Parco Agricolo Sud. Takes its name from a large port which was to arise on the site, at the beginning of '900, to allow ship transportation from Milan to the Po's river. After the first excavation, the project was abandoned and the docks filled since 1960. The area is characterised by a strong heterogeneity, occupied by: uncultivated open spaces partially used as landfill; spontaneous production activities/crafts operating without respect for the environment; heterogeneous and building fabric of poor quality except some pre-existing highly degraded rural heritage. Verification of soil pollution and its reclamation are the beginning for the redevelopment of the area and its give back to the enjoyment of the quarter and the city.

ADAPTABILITY : MAIN ELEMENTS TO TAKE INTO ACCOUNT

The urban regeneration foresees a composite intervention, in which the urban and built regeneration is merged with the measures of social integration.

The strategic choices will be realized through some actions:

- 1-creation of a landscape project in a peripheral degraded area;
- 2-keep, strengthen and enhance the existing sports and leisure facilities;
- 3-operate the rehabilitation and filling existing consolidated tissue in particular, in connection with the Mazzini district, in the North;
- 4-locate a business incubator, that will be a driving force for new activities with a strong emphasis on environmental characters;
- 5-create a new urban centrality in proximity of the Metro station;

- 6-redesign, the infrastructures both perimetral and internal to the site, in order to facilitate East-West connection;
- 7-enhancing the historical heritage and those of typological and environmental special value.
- 8-promote the research around the sustainability and efficiency of this part of the city, aimed at saving and reducing consumption and application of sustainable and innovative energy systems.
- 9-activate social support actions to follow the stabilisation path of the existing settlements and activities also launched experimental forms of "diy" (do it yourself).

Milano-Italia-europan 12 RE-INHABIT AN URBAN FABRIC, FILTER BETWEEN CITY AND COUNTRY



Semi aerial view to the ATU 15

Milano-Italia-europan 12 RE-INHABIT AN URBAN FABRIC, FILTER BETWEEN CITY AND COUNTRY



Via Marocchetti (top), via Fabio Massimo (bottom)



via Fabio Massimo



one of the old buildings within the ATU 15



via San Dionigi (top), one of building types within the site (bottom)