



aerial photo with limits of the site

CATEGORY Urban/landscape/architectural
TEAM REPRESENTATIVE architect or urban planner or landscaper
LOCATION County of Kalmar
POPULATION City 63 505 inhab. Conurbation 160 000 inhab.
STRATEGIC SITE 2168 ha PROJECT SITE 127 ha
SITE PROPOSED BY Municipality of Kalmar
OWNER OF THE SITE Municipality of Kalmar
COMMISSION AFTER COMPETITION Urban project management
role, design of public and landscape areas.

HOW CAN THE SITE CONTRIBUTE TO THE ADAPTABLE CITY?

NATURE NURTURED

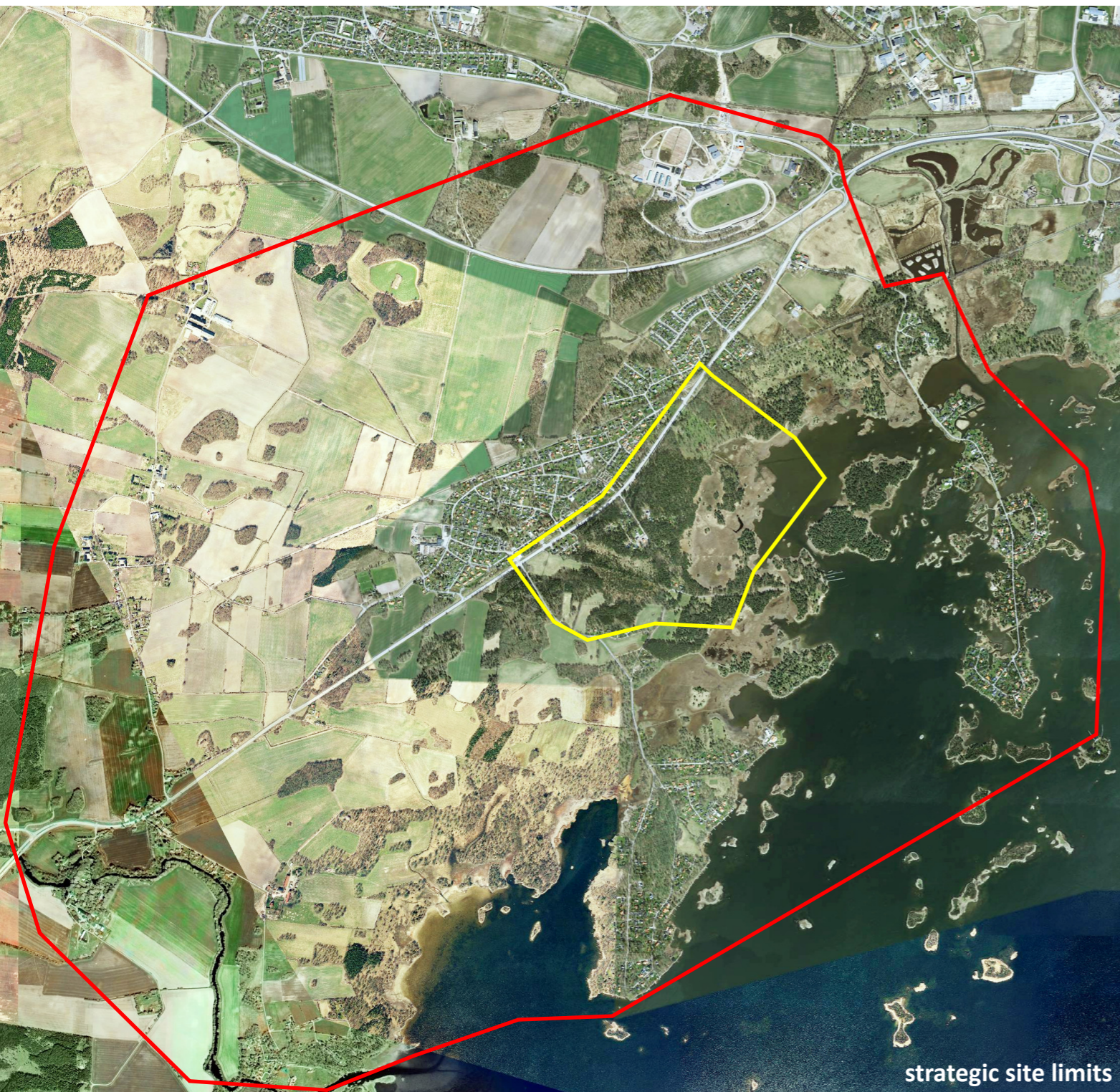
The site presents an opportunity to explore the human/nature relationship. This booming university city is surrounded by the beautiful Baltic archipelago and ancient pasture lands. As the planned expansion cannot take place in the valuable farm lands, the city must grow into the low lying areas between sea and land. The city wants to double the size of the existing neighbourhood from today's 3000 to 6000 inhabitants.

The seemingly untouched nature here is in fact the result of centuries of cultivation, grazing and logging. This long-time human interaction with the landscape has blurred the border between untouched nature

and cultured land. An expansion into this area must take this into account. The city will expand here, but it must be done with respect and by nurturing the surrounding landscape just as people have been doing through history. The site poses an intriguing challenge for architects and landscape architects alike.

CITY STRATEGY

The city wishes to strengthen the distinctive characters of its five boroughs. The strategic site area of Södra staden is one of these. The project site could be transformed from a monofunctional area with detached single family houses to a more diversified community. The plan is to double the size of Södra staden by adding another 1500 dwellings. Rerouting the thoroughfare opens up possibilities for the



strategic site limits



project site limits

creation of an attractive sea side borough.

SITE DEFINITION

In the 15th century, Kalmar was the absolute centre of power and trade in Scandinavia. It has maintained a unique character and has renewed itself as a regional node for transportation, commerce, education and tourism. The strategic coastal location in the Kalmar sound, once chosen for military purposes, now proves a valuable asset in the creation of a successful contemporary city.

The limits of the project site correspond to land ownership and geological conditions. The project site stretches from the archipelago westwards across

pasture land that sometimes floods. Still west of this, European highway no. 22 divides the project site into two separated areas. This road will be moved and on the remaining road speed limit will be reduced and the road will become a local city street with mixed traffic. Areas on both sides of the road that previously were disturbed by traffic noise and left unbuilt as buffer zones, are included in the project site. West of the highway lies an area of homogeneous single family houses. The city centre is about 7 km to the northeast. Kalmar airport with connections mainly to Stockholm lies about 2 km to the north. To the north there is a trotting track. The housing area is connected to Kalmar with E22, and also with a disused railway track, made into a bicycle and pedestrian path. The project site could be transformed from a monofunctional area with

detached single family houses to a more diversified community. There is also a need for a local centre. The eastern part of the road offers fantastic nature. Within the strategic site area it is about making this nature accessible without consuming them.

ADAPTABILITY: MAIN ELEMENTS TO TAKE INTO ACCOUNT

The task is about proposing an organic expansion in stages, creating a unique identity/character, and proposing new dwelling typologies. It is also about exploring the human - nature interface.





aerial photo with archipelago park



Kalmar art museum



Kalmar castle



pasture and single family houses within the strategic site