

CATEGORY urban / architectural
TEAM REPRESENTATIVE architect

LOCATION Seinäjoki

POPULATION City 60 000, Seinäjoki region 200 000 inhabitants

STRATEGIC SITE 70 ha **PROJECT SITE** 33 ha

SITE PROPOSED BY City of Seinäjoki

OWNER OF THE SITE City of Seinäjoki, State of Finland and several private owners

COMMISSION AFTER COMPETITION

Commission at the level of urban structure and urban planning.

HOW THE SITE CAN CONTRIBUTE TO THE ADAPTABLE CITY

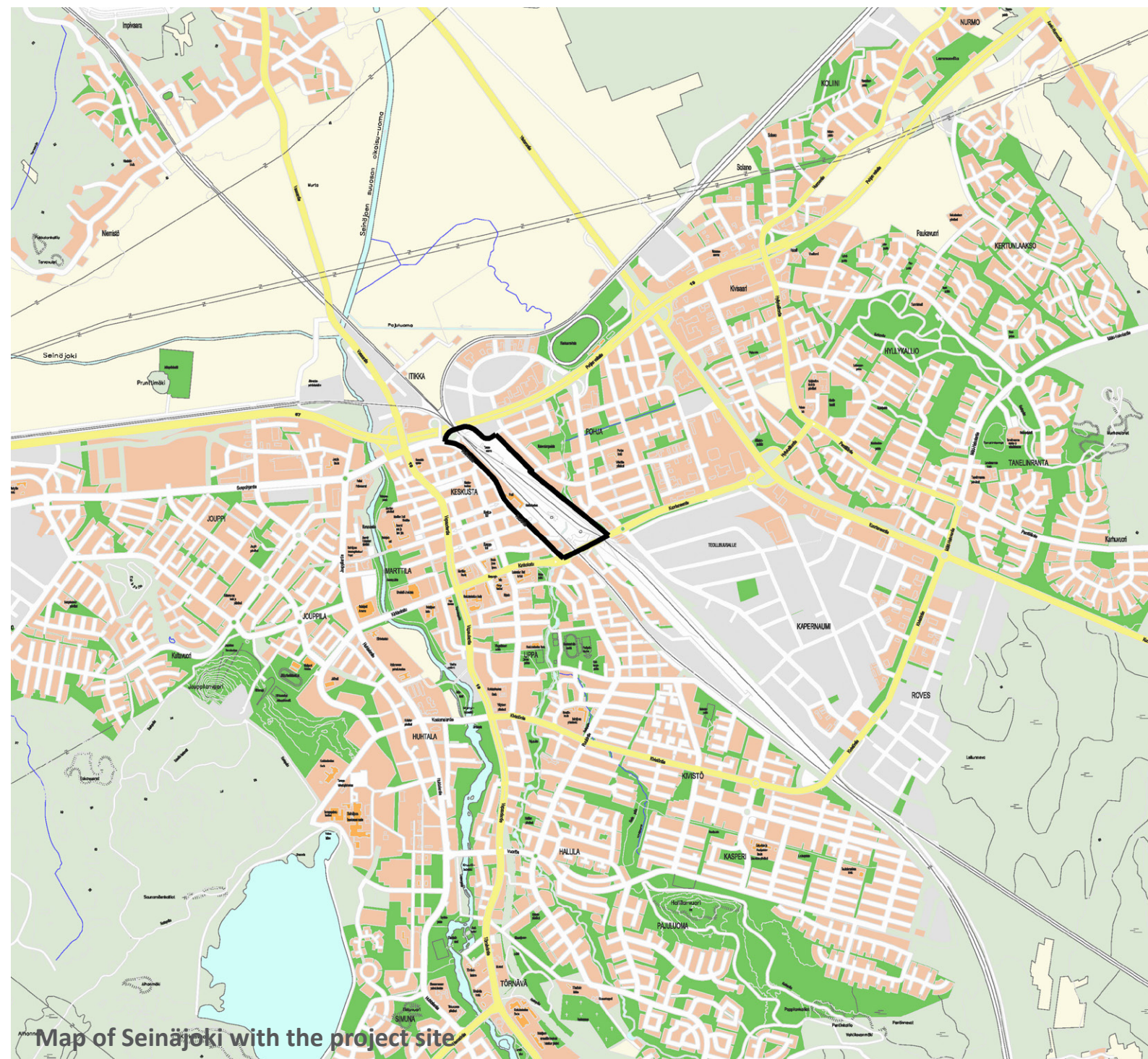
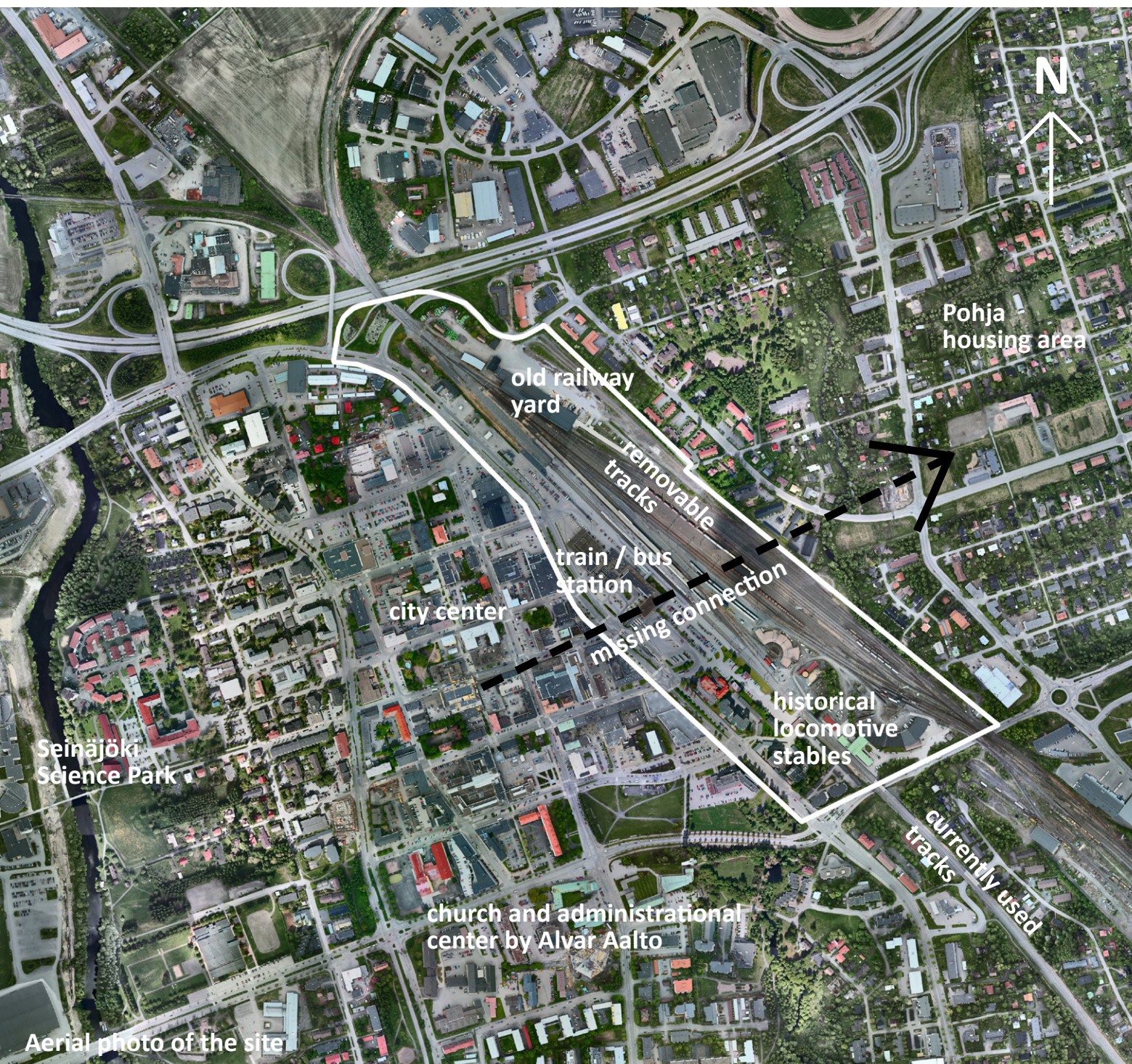
Seinäjoki railway station is an important junction of five railway lines half way between Helsinki and Oulu. The lines were originally built 1880 – 1913 and the city of Seinäjoki grew up around the station. The old cargo railway yard, however, has become obsolete and is currently an urban fallow. Many of the warehouse buildings as well as a large part of the tracks will be removed in the future and the area will become available for new development.

The objective is to develop Seinäjoki railway station area into a versatile centre where multiple functions, commercial services and housing come together. The station's location in the very centre of Seinäjoki is ideal, and it is hoped that the new functions will be closely linked to the centre and enliven the surrounding areas. Developing the railway station area will offer an opportunity to complement and expand the city centre and bring to the city a much needed new urban quality.

CITY STRATEGY

Seinäjoki is one of Finland's fastest growing cities, with an annual growth of 1,5%. The city is the regional centre of southern Ostrobothnia and strives to be an attractive and viable choice for residence and businesses. Seinäjoki has excellent rail connections to many cities, such as Tampere (1h 05min), Helsinki (2h 40min), Vaasa (55min) and Kokkola (55min).

In its strategy the city is committed to develop the quality of the environment in the city centre and to improve it's commercial viability. This can be done in part by increasing the housing density in the city center and it's immediate surroundings.



SITE DEFINITION

The competition area is the Seinäjoki railway station with its railway yards and station buildings. The site is east of the Seinäjoki city centre and is separated from it by the busy Valtionkatu street. The present railway station, built in 1969, is situated between the city centre and the tracks. In connection with the railway station are the city's main post office and bus station. The cargo railway yard, which is no longer in use, is situated east of the tracks. In the south, between the tracks, there are historically valuable locomotive stables that will be preserved.

FUTURE OF THE SITE IN RELATION OF SITE'S FAMILY AND ADAPTABILITY

The old cargo railway yard in the north-east has become obsolete and is currently an urban fallow. Many of the buildings as well as a large part of the tracks on the Pohja side will be removed in the future and the area will become available for new development.

How To Transform Physical Obstacles Into New Connections?

It is hoped that a variety of diverse mixed functions and housing will be created in the area, including work places, services and public functions. Hotels or other accommodation services could be a natural addition near the station. A great number of events are held in Seinäjoki annually, which the station area could support in a variety of ways.

The railway tracks and railway yard separate the Seinäjoki city centre from the city district of Pohja. A decades old vision has been to offer pedestrian and bicycle connections across the railway yard between the two districts. The connections from the Seinäjoki Science Park via the city centre to the railway station and from there on to Pohja would activate the city centre and link it more closely to its surroundings.

The station area acts as a calling card for Seinäjoki and its appearance and identity should also be improved. The outlook of the area as seen from the city as well as the experience of entering the city center via the train station should be examined. On the city centre side, the railway station should be linked more closely to the fabric of the city itself.



Aerial photo of Seinäjoki towards north west

RAILWAY STATION AREA DEVELOPMENT

Seinäjoki - Finland - EUROPAN 13

