



CATEGORY: architectural and/or landscape
SITE'S FAMILY: How to integrate vacant sites in urban development?
LOCATION: Barreiro Municipality
POPULATION: 78.764 habitantes
STUDY SITE: 27,71 ha PROJECT SITE: 3,35ha
SITE PROPOSED BY: Município do Barreiro
OWNER OF THE SITE: Transport companies and Municipality
COMISSION AFTER COMPETITION: Partial urban study, subject to scenario and actors definition
REPRESENTATIVE OF TEAM: Architect

HOW CAN THE SITE CONTRIBUTE TO THE “ADAPTABLE CITY”
Main challenge of the site is to adapt and transform a transport interchange space, reversing its process of decay and obsolescence, with a new meaning and wider territorial integration. Within a city waterfront urban regeneration process, the aim is to develop a new centrality, combining heritage and landscape current features with new activities. Its outstanding position allows rebuilding the connections with the city and neighbouring fragmented territories: over the river linking to a closer town (Seixal) and a better integration with surrounding urban fabric. The location and diversity of elements demand solutions to be versatile and flexible, envisioning they can be phased or independently built, always ensuring intervention's global and state coherence.

CITY STRATEGY
Located in Lisbon Metropolitan Area (LMA) within the Tagus estuary, Barreiro has a long industrial history still reflected in its urban landscape and strong identity. The city intends to develop regeneration strategies for large deactivated industrial spaces, with new and more diverse activities. This is the opportunity to repair the urban fabric and to connect it to other LMA nucleus:
-rehabilitation of former transport interchange, improving the waterfront with new tourism, sports and leisure activities;
-transformation of deactivated railway spaces and urban barriers with new continuity spaces, urban connectivity and shared activities;
-enhancing natural spaces quality with leisure, gastronomy, sports, fishing and other tourism activities;
-connection across the river, ensuring pedestrian and cycling movements, taking advantage of existing sections of an former railway bridge.



SITE DEFINITION

The site corresponds mainly to an embankment area over the river, currently occupied with facilities and transports infrastructures (some deactivated other still functioning but envisioning dislocation), to which it is aimed to find and develop new uses and connections. Historically bounded to the railway activity, the project site has been gradually abandoned, resulting in significant vacant spaces, with no current meaning or function for the city dynamic. Despite this, it includes an important heritage recognized in the city and people's collective memory. In the surrounding area, the study site is solely devoted to ensuring transport connections (ferry, train, bus, car), not taking advantage of its full potential. The insertion on the Tagus estuary enhances wider connections, either to Lisbon and other metropolitan towns that should be unlocked. .

FUTURE OF THE SITE IN RELATION OF SITE'S FAMILY AND ADAPTABILITY

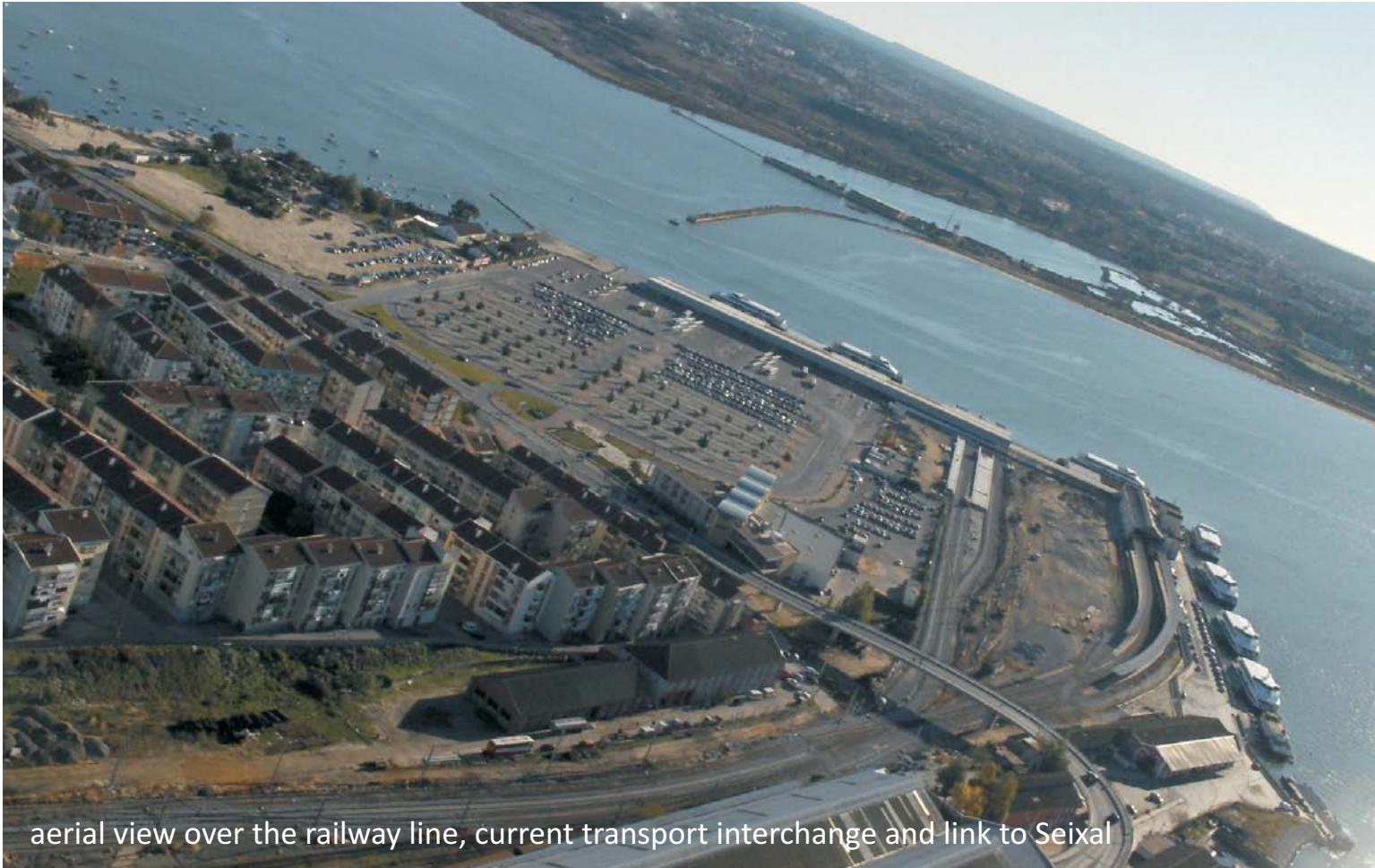
The opportunity is to form a new centrality area in the city, associated to the transformations of the industrial functions and to a possible new location of current transport interchange. It triggers the promotion of new experiences and activities, to the local community but also to visitors and tourists, emphasizing local values and resources, ensuring the efficiency and sustainability of solutions. The balance between heritage conservation and its "activation" to new uses, recycling built structures to new purposes with larger urban interactivity, bringing together different public and private actors. These new activities can include permanent and temporary elements, that can adapt to financial resources and that can be built autonomously depending on actors and future timings.

The riverfront location ensures a privileged landscape, proximity to sensitive natural areas and nearby recently redesigned waterfronts, including a small fishing community and river beach to be improved. The existence of obsolete and non functional spaces justifies adaptation: former transport interchange and surrounding area (project site) and deactivated railway link to Seixal. Other areas as the current transport interchange and parking area or the poorly designed road connections are also included in different scenario possibilities for the site.

The complete file gives information and suggestions based on possibilities that were considered in recent past. Competitors are surely asked to look at process at the same time as to project, by scenario-hypothesis and showing flexibility of their proposals in order to activate new urban qualities in different circumstances.

Barreiro - Portugal - european 13





aerial view over the railway line, current transport interchange and link to Seixal



former transport interchange (foreground) and Seixal (background)



former transport interchange and view of natural area wind mill



railway area