

OLIVENZA SITE 2 / TEAM 3

SHOW ME THE WATER



European 13-14 Inter-Sessions Forum – Workshop

ARCHITECTURE TO THE RHYTHMS OF CITY AND NATURE

To arouse interactivity at the European level, European and the Junta de Extremadura invited the E13 winning teams (winners and runner-up) for 4 days to consider and design scenarios on the E13 session topic –“The Adaptable City”– applied to urban contexts in the Region of Extremadura. Three urban situations were proposed for the Workshop, all three located in 2 nearby towns – Olivenza (with 2 sites) and Valencia de Alcántara.

In a region like Extremadura, with almost 75% villages of less than 2,000 inhabitants, the city-nature relation is everywhere. Nothing can be done without considering the presence of the rural environment, which has generated enough activity for the urban poles to develop. Still, along the years, the influence of the countryside has gradually (if not drastically) vanished, impacting on the urban spaces which therefore were deserted. So how to regenerate the urban structure through the revitalisation of urban fragments? How to consider today the limit between city and countryside? And how to take back the urban space through new rhythms and uses?

**European
Junta de Extremadura
E13 Winning Teams**



OLIVENZA SITE 2 // CITY & NATURE

Which Limit Between City & Countryside?

The site South of Olivenza includes the extensions of peripheral housing districts in direct contact with the nearby agricultural fields. The landscape looks like a flat land with green scars and is made of valleys running towards Lisbon, linking the waters of Olivenza to the Atlantic sea; hills and towers act as high points “controlling” the territory until the limit of the horizon, while large “enclaves” –cloisters & arenas– are embedded in the historical limits of the bastion elements, inducing a (non) dialogue between the open agricultural land and the mostly residential outer edge of the city.

The group had to develop scenarios to create an interface between build town & agriculture, without preventing the residential extension but including it into the agricultural natural landscape. Three topics rose from the reflections and subsequent questioning: the **Complicity of Topography and Water** – Olivenza’s permanent defence condition forced the valley-town to build up to the sky –with highpoints for control– as well as dig down to the underground –with water for survival. How to bring back the element of water as an identifying element to Olivenza?; **The Limit as an “objet trouvé”** – Olivenza’s existence had to rely on protective limits. Historically, it is a concentric city of defensive rings. The historical limits –walls, bastions, gates– have lost their protective role though and were converted to elements of Olivenza’s major public spaces –squares, streets and destinations like the bull fight arena. Today the outer edge of the city however is a “non-existing wall” – a result, not a plan. How to turn this accidental relation into an added value for the city and the countryside?; and **100% Coexistence and 0% Interaction** – The accidental condition of the outer edge shows a purely physical proximity with a painful absence of interaction, opposing the historical role of the limit: the old walls were 100% interaction, physically protecting the city and guaranteeing a survival that was as substantial as water. How to re-establish the power of the limit as a connecting medium? Through a rereading of the past the three “obsessions” discovered a wonderful “already there” to offer new pathways to Olivenza’s future.



SHOW ME THE WATER

CITY & NATURE – MAKING URBAN LIMITS MORE DYNAMIC



“Geography is used, first, to make war.” Using the historical power of Olivenza’s geography, yet turning it from a war project to a strategy of comprehensive reconciliation: the system of water, topography, texture, and land cultivation are mapped by their relation to sky, wind, sun, underground and soil. This cartography of relationships demonstrates an impressive richness of the “already there”, which is activated through cross-programming of leisure and agriculture activities. Thus a productive city/countryside link is established on the scale of the town and the territory: specific transversal connections trace existing water systems and the town’s porosity. They provide agriculture leisure programs with infrastructures, as well as they improve the quality of public space for the locals – a detective geography, reintroducing the existing as the new.

PARTICIPANTS

Jorge GARCÍA ANTA (ES), Fernando Eiroa (ES),
Winner in Warszawa (PL) with “River Gate”

Diana LEVIN (AT),
Runner-up in Goussainville (FR) with “Des racines et des ailes”

Benoît BARNOUD (FR), Clara LOUKKAL (FR),
Winner in Moulins (FR) with “La théorie de l’évolution”

Philip GROSCH (IT),
Winner in St-Pölten (AT) with “Ju(mp) in the Water Kiss That Frog”
Runner-up in Azenha do Mar (PT) with “Second Lines”

Fanny CHENU (FR),
Runner-up in Metz (FR) with “Cycles, Sol, Air”

Boris VAPNÉ (FR),
Special Mention in Marne-la-Vallée (FR) with “Relational Landscape”

COACH: Bernd VLAY (AT)

SHOW ME THE WATER

WATER STRUCTURES FOR OLIVENZA AND BEYOND

WORK GROUP:

JORGE GARCÍA ANTA (ES)

BENOIT BARNOUD)FR)

FANNY CHENU)FR)

DIANA LEVIN)AT)

CLARA LOUKKAL)FR)

FERNANDO EIROA)ES)

PHILIP GROSCH)IT)

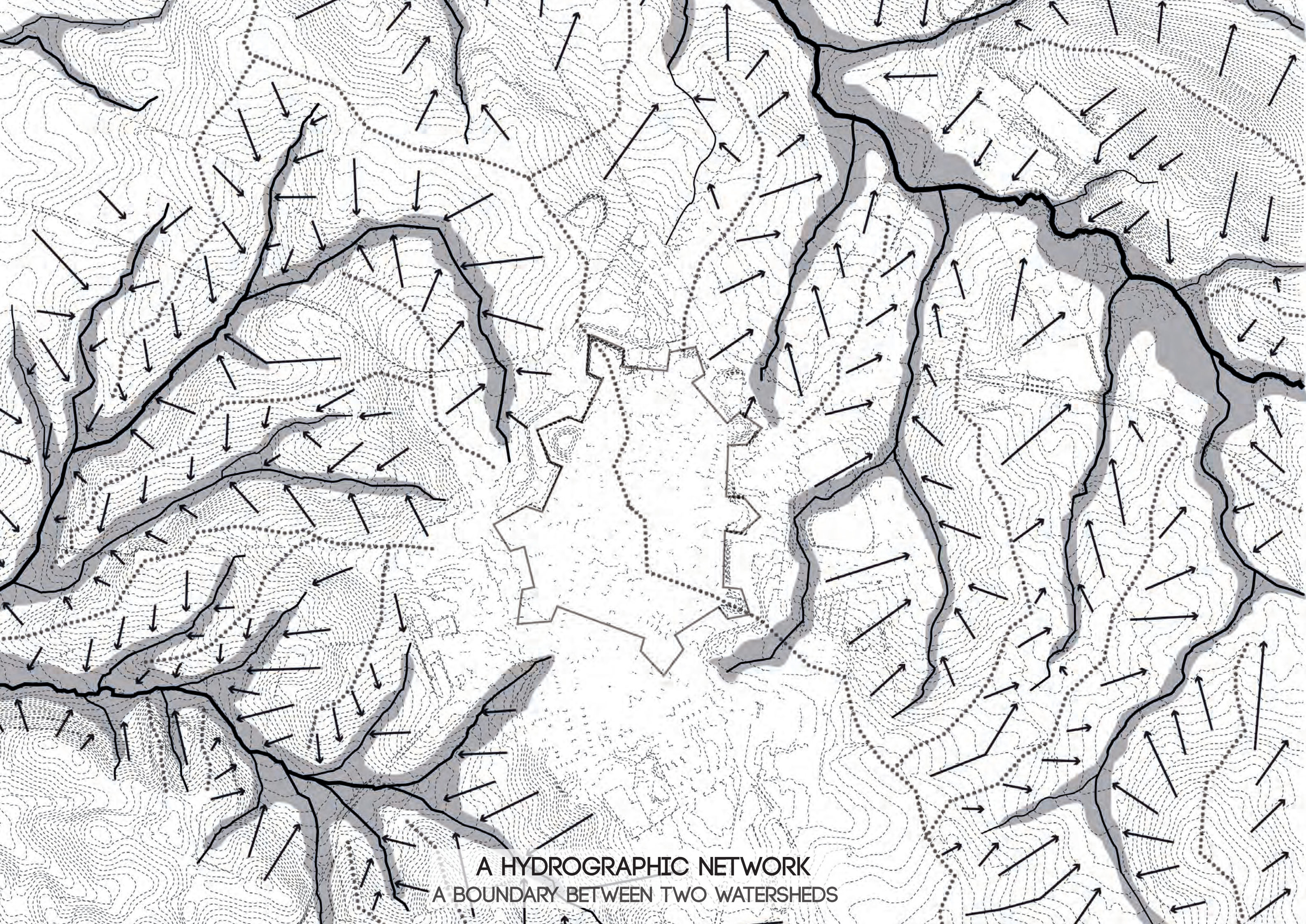
BORIS VAPNE)FR)

OLIVENZA

WATER-BASED CITY



A DEFENSIVE POSITION
"GEOGRAPHY IS USED , FIRST, TO MAKE WAR"

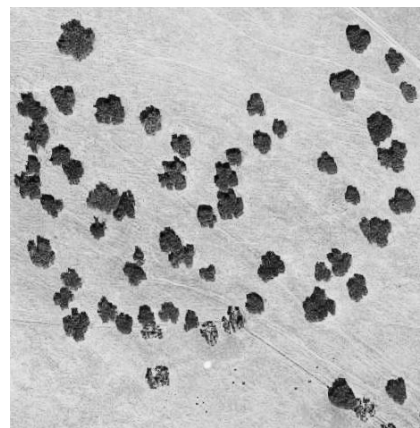
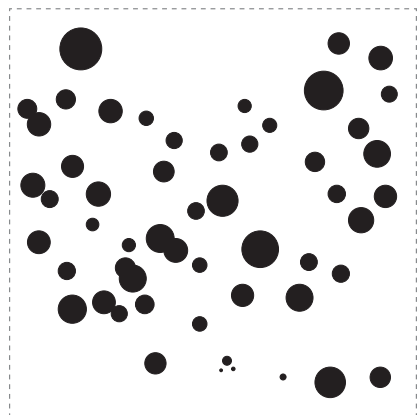
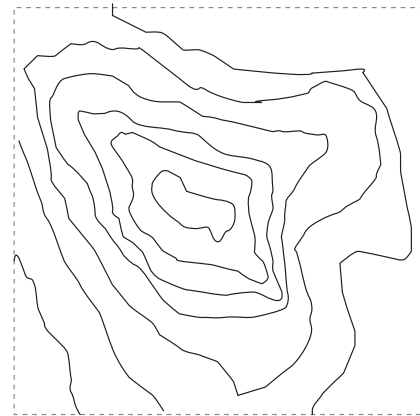


A HYDROGRAPHIC NETWORK
A BOUNDARY BETWEEN TWO WATERSHEDS

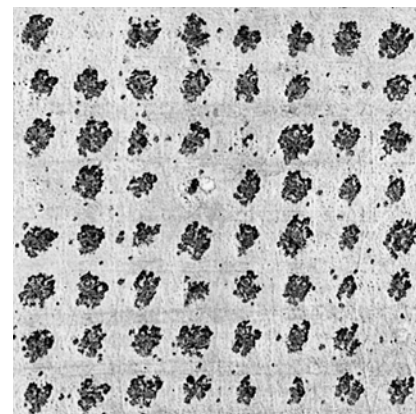
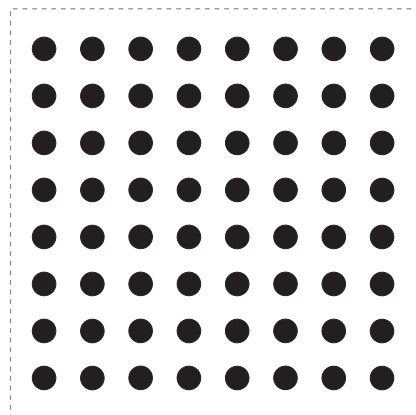
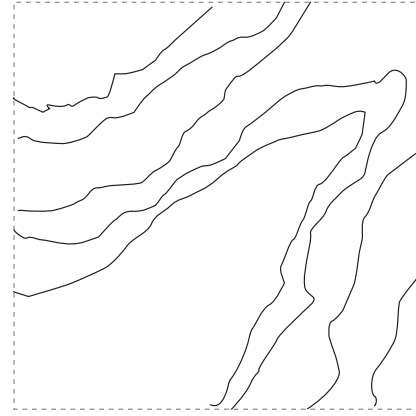
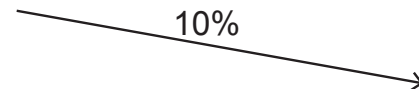


AGRICULTURAL GRADIENT
THE TYPOLOGY OF CROPS CORRELATES
WITH THE PROXIMITY OF WATER

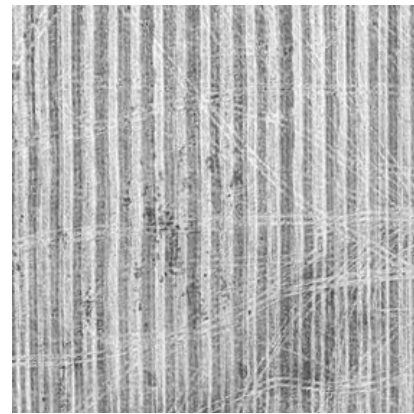
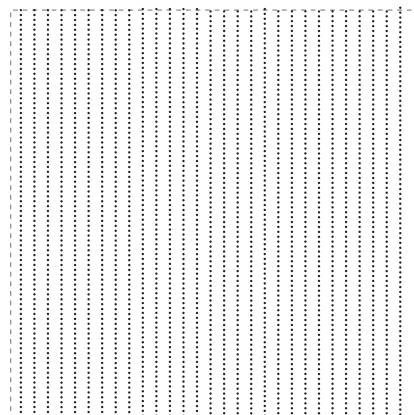
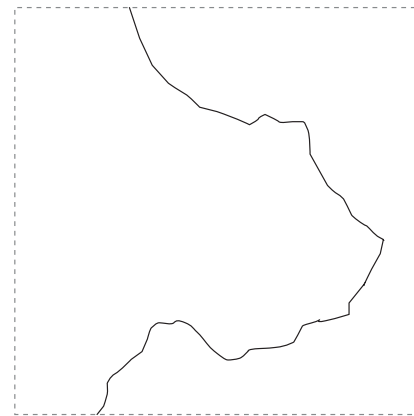
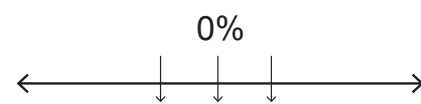
CORK OAK TREES



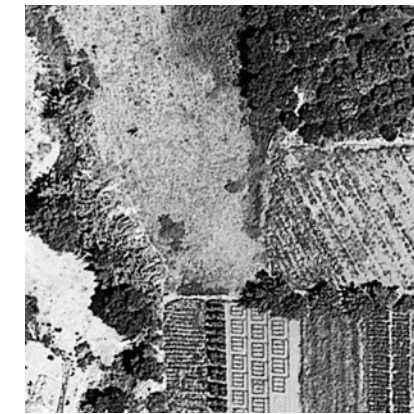
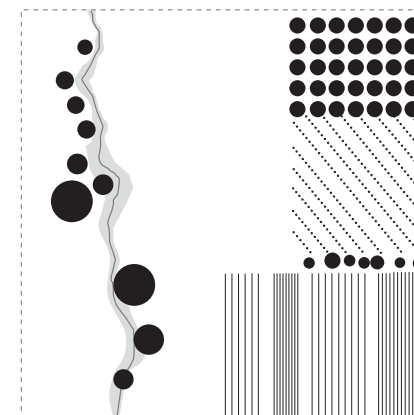
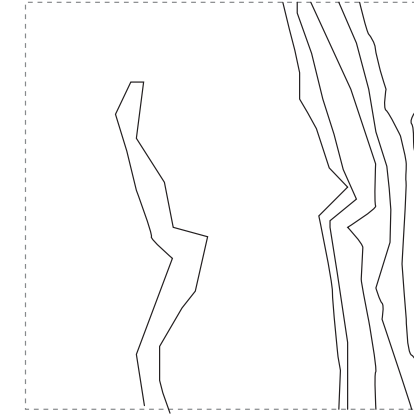
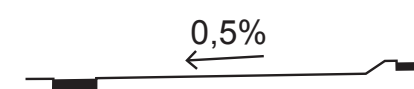
OLIVE TREES



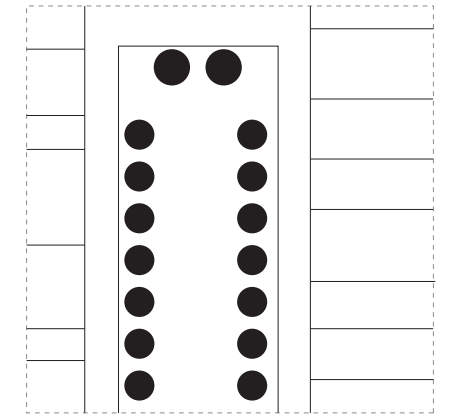
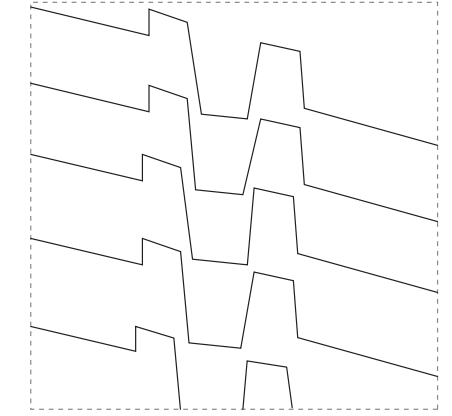
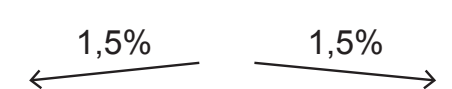
CEREAL FIELDS



IRRIGATED GARDENS



URBAN SPACE

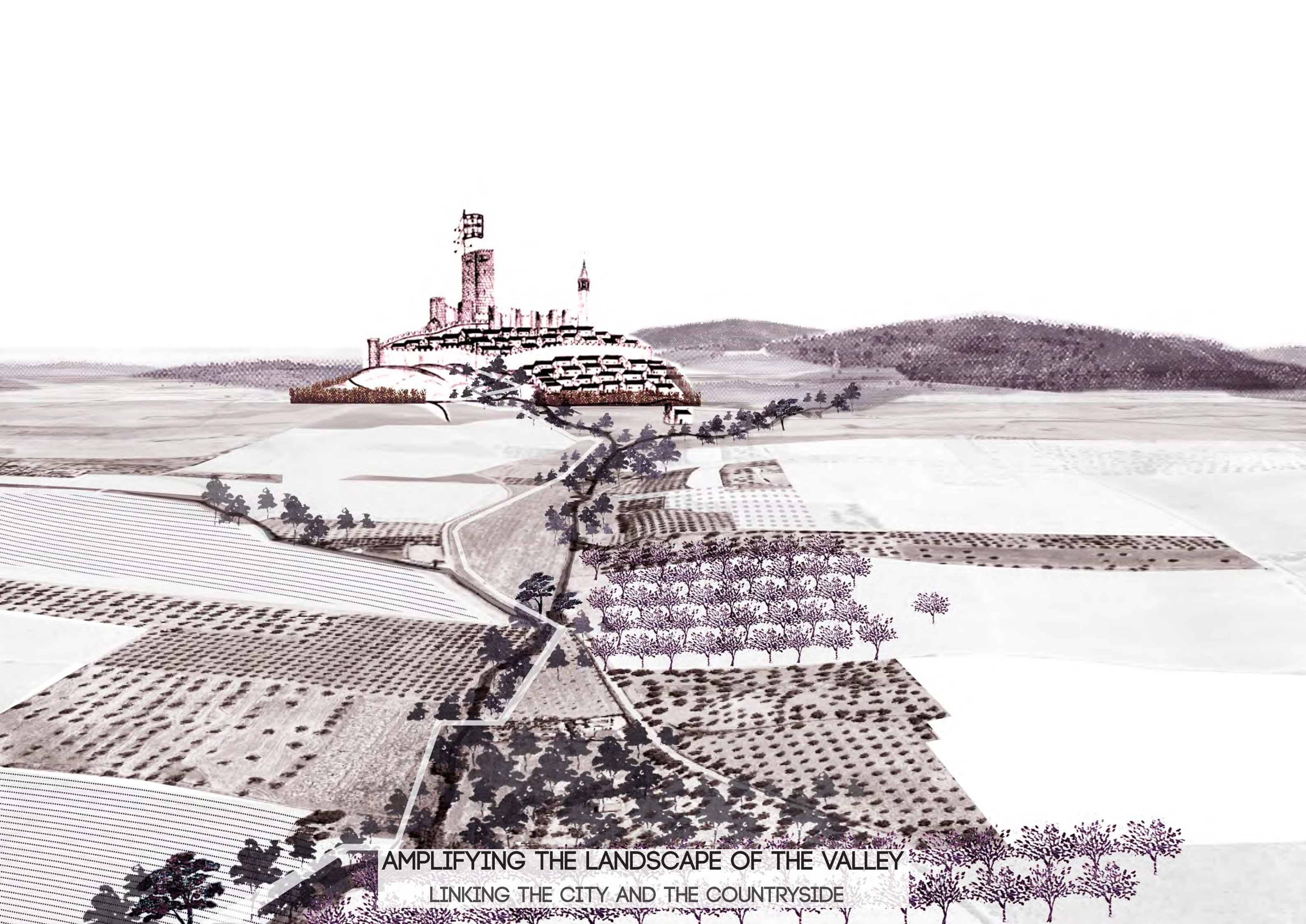


RURAL LANDSCAPE TEXTURES

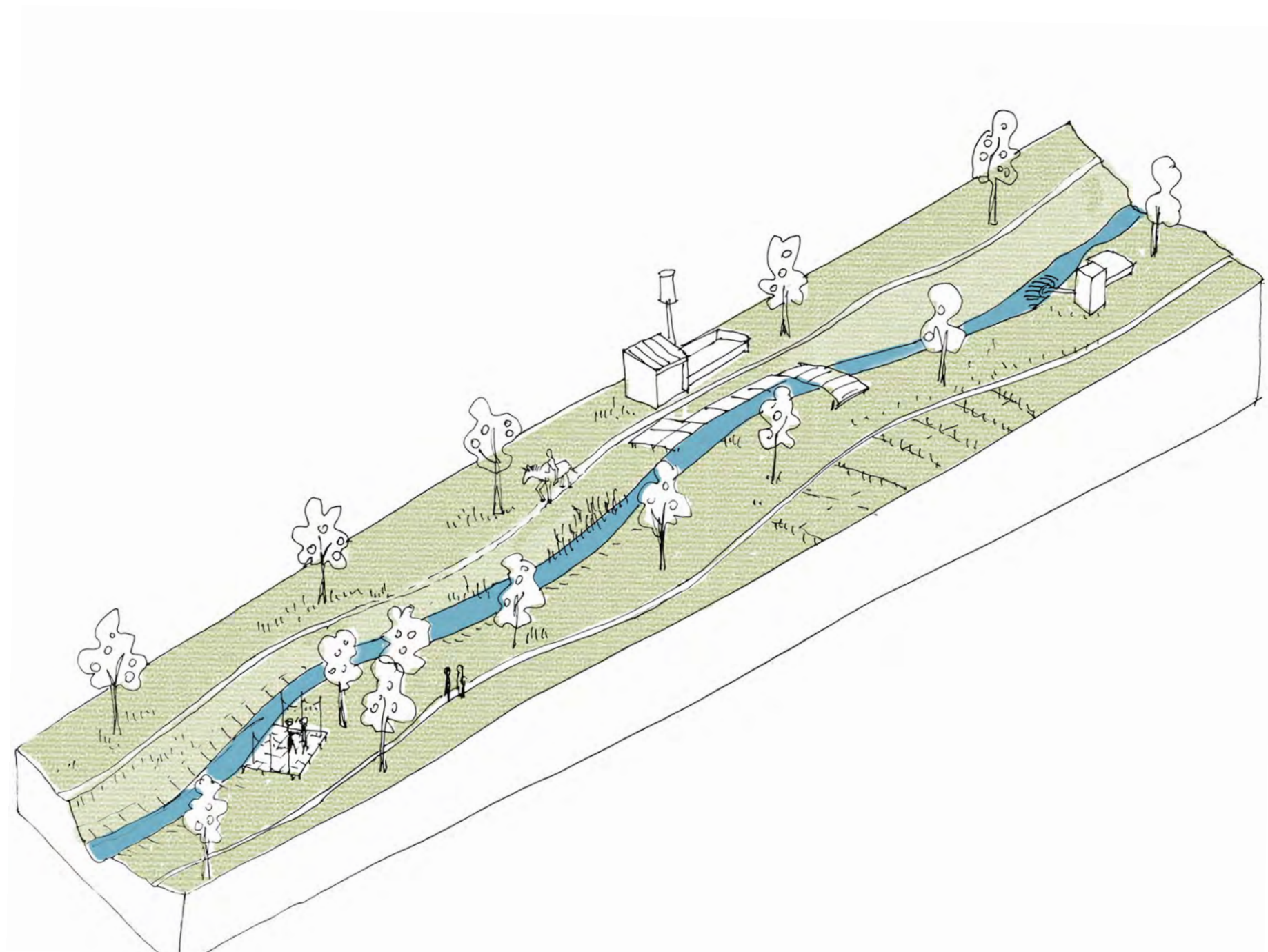
INTENSIFYING AGRICULTURE
LINKING LEISURE AND ECONOMICAL
DEVELOPEMENT



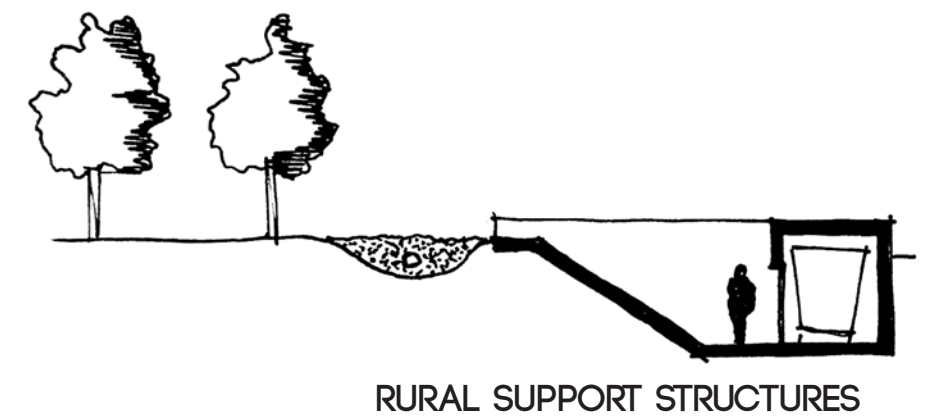
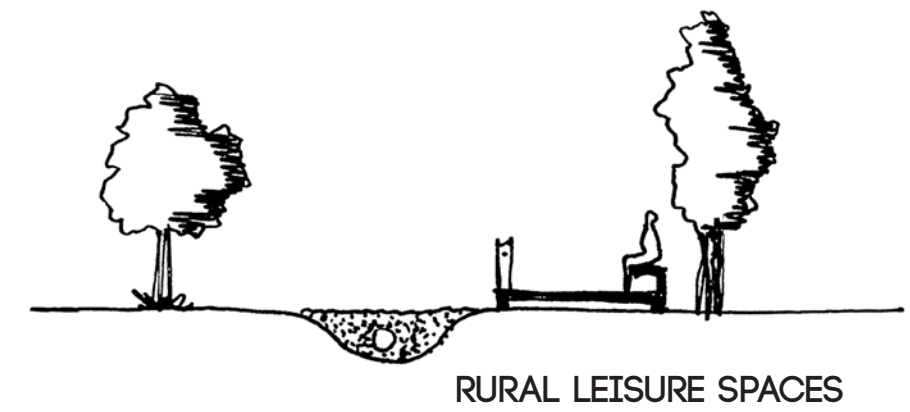
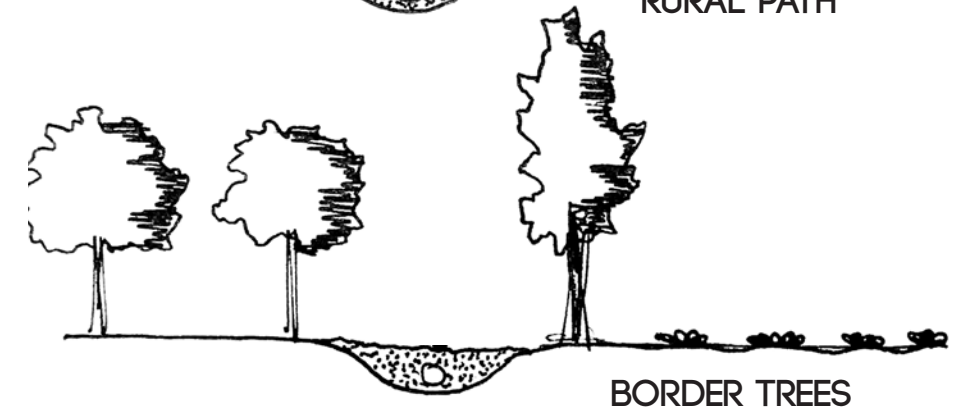
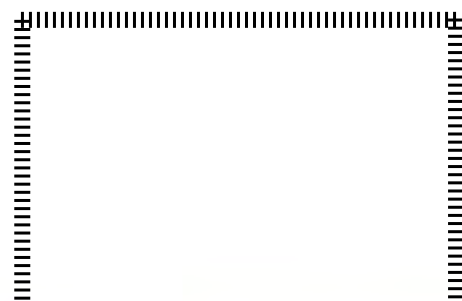
AMPLIFYING THE LANDSCAPE OF THE VALLEY
LINKING THE CITY AND THE COUNTRYSIDE



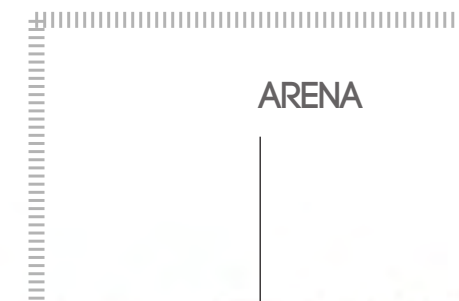
AMPLIFYING THE LANDSCAPE OF THE VALLEY
LINKING THE CITY AND THE COUNTRYSIDE



1 - COUNTRYSIDE



2 - CITY



ARENA

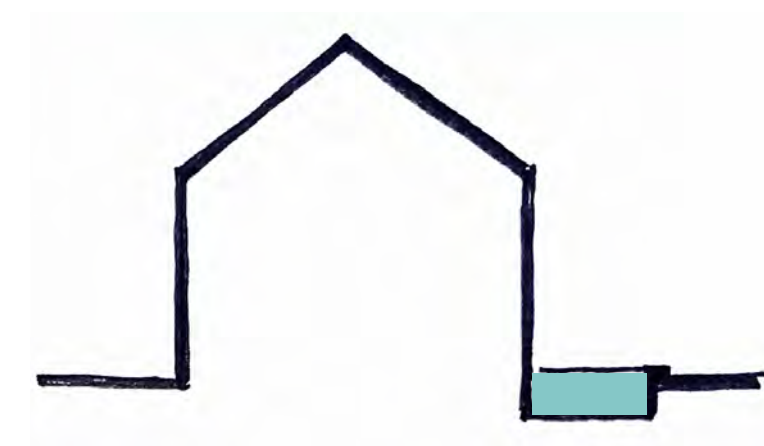
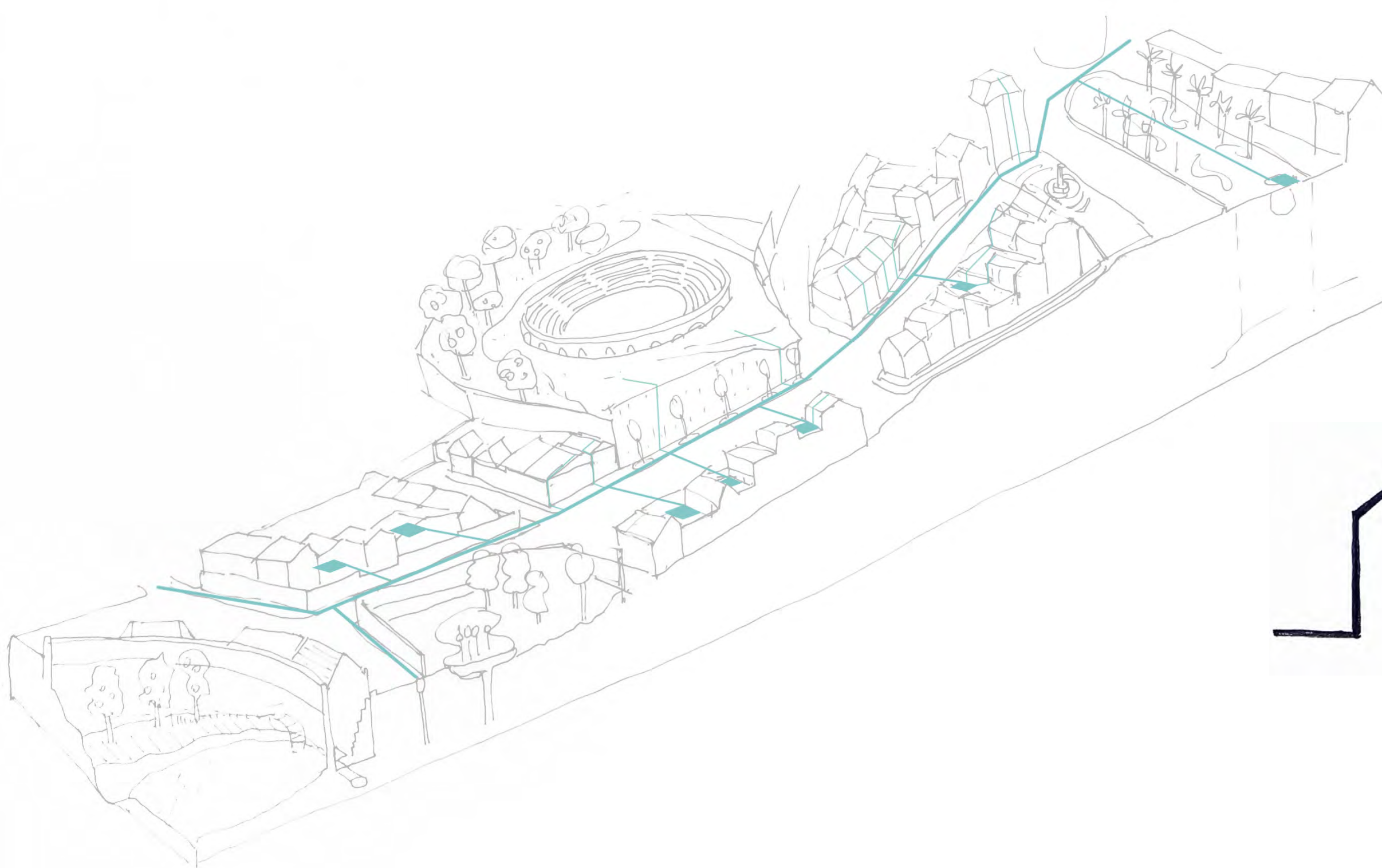
KING'S TOWER



URBAN MORPHOLOGY NEED FOR TRANSVERSAL CONNECTIONS



CONNECTIONS BETWEEN NEW FRAGMENTS AND TOWN CENTRE?

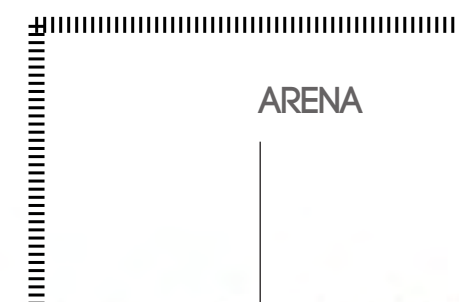


RAIN WATER COLLECTION

1 - COUNTRYSIDE



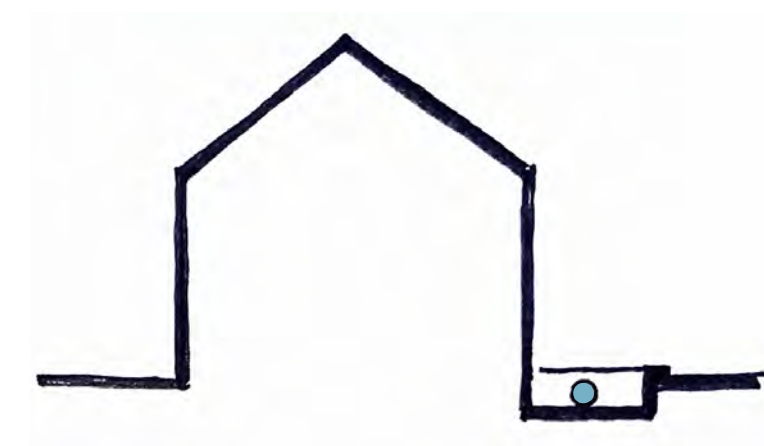
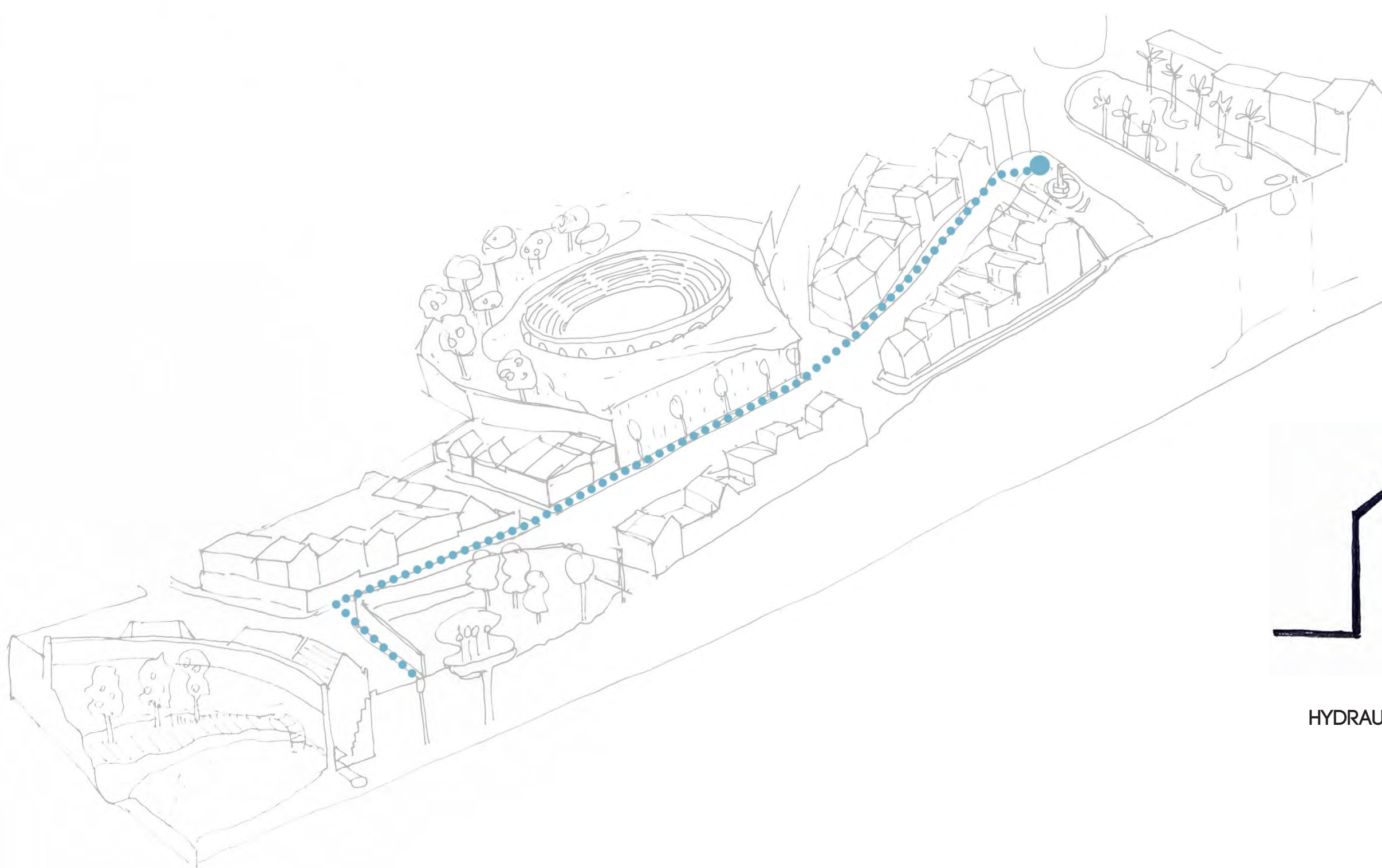
2 - CITY



ARENA

KING'S TOWER

WATER RELATED SYSTEMS
IMPROVEMENT OF THE QUALITY OF EVERYDAY LIFE

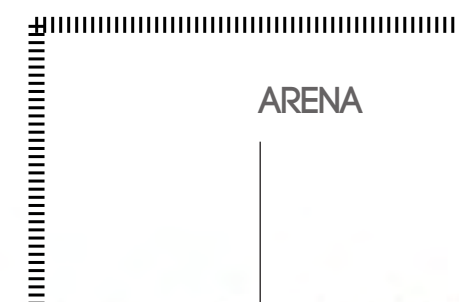


HYDRAULIC SYSTEM AND FOUNTAINS

1 - COUNTRYSIDE



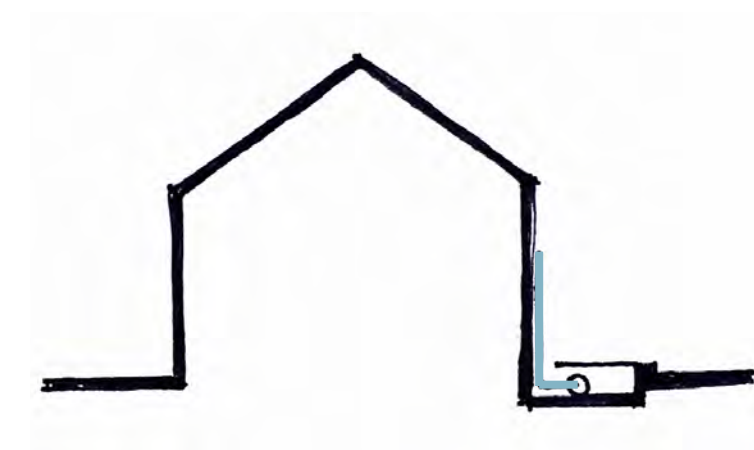
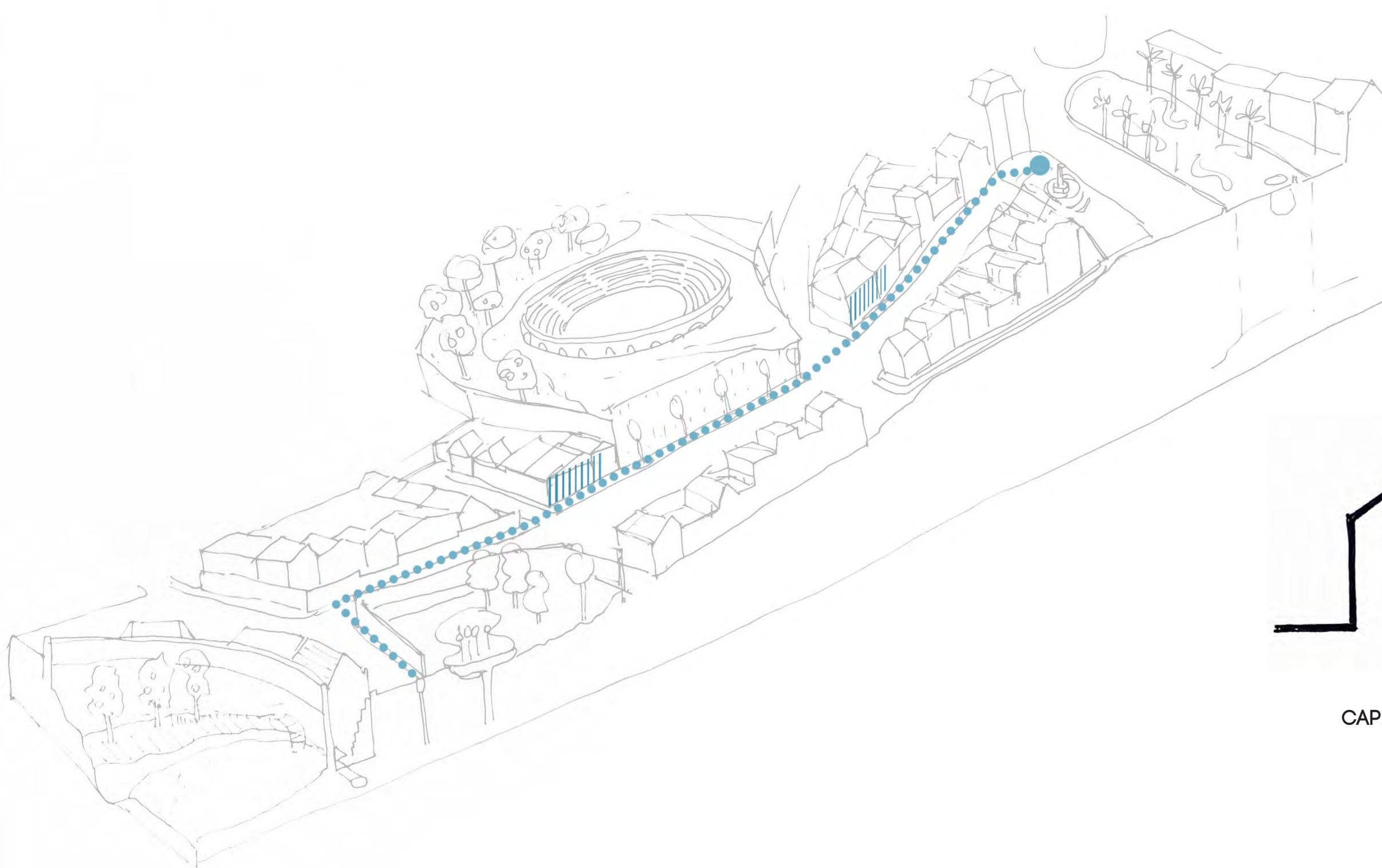
2 - CITY



ARENA

KING'S TOWER

WATER RELATED SYSTEMS
IMPROVEMENT OF THE QUALITY OF EVERYDAY LIFE

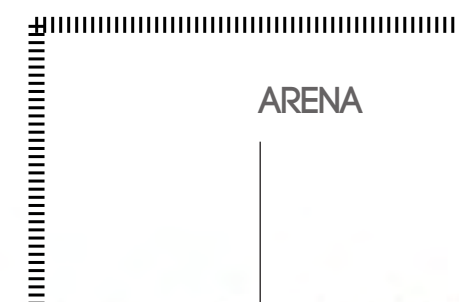


CAPILLARITY COOLING SYSTEM

1 - COUNTRYSIDE



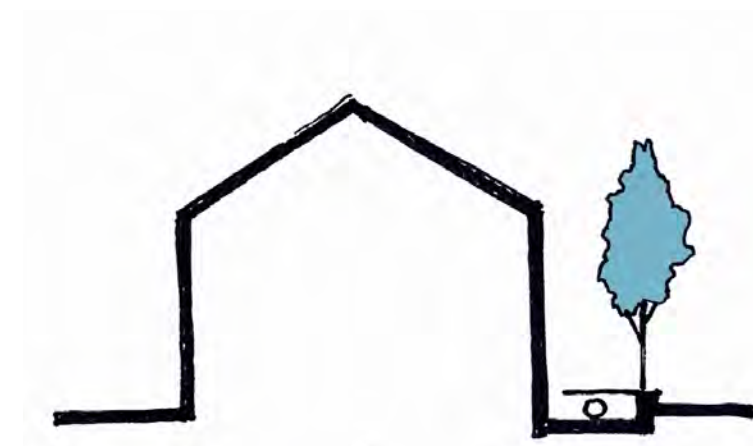
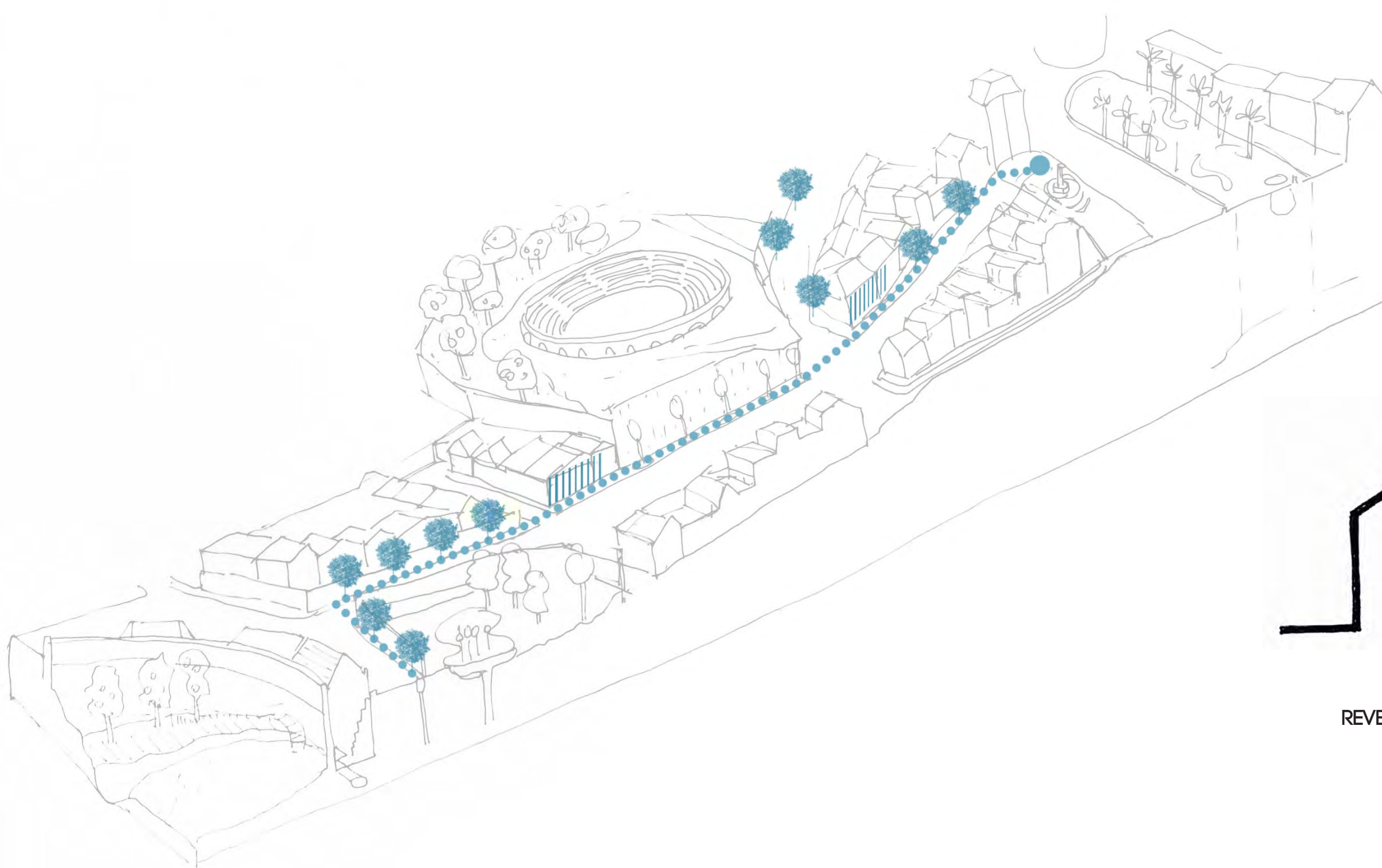
2 - CITY



ARENA

KING'S TOWER

WATER RELATED SYSTEMS
IMPROVEMENT OF THE QUALITY OF EVERYDAY LIFE

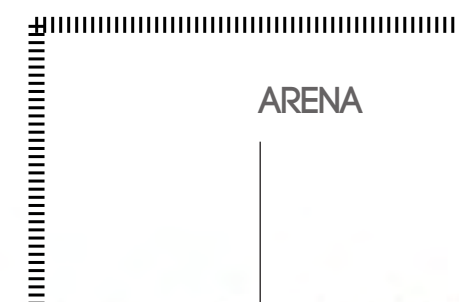


REVEALING WATER THROUGH TREES

1 - COUNTRYSIDE



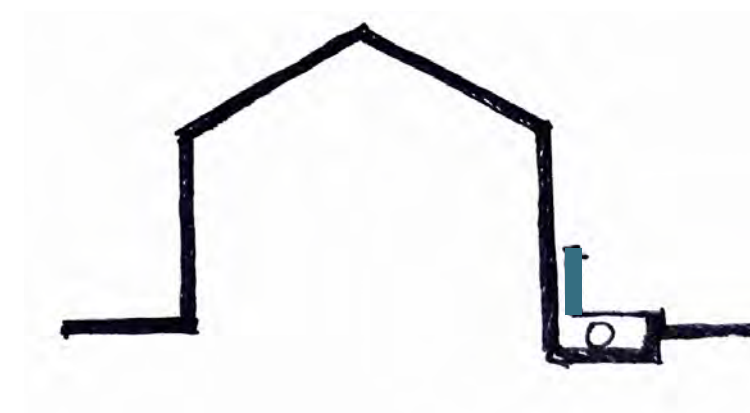
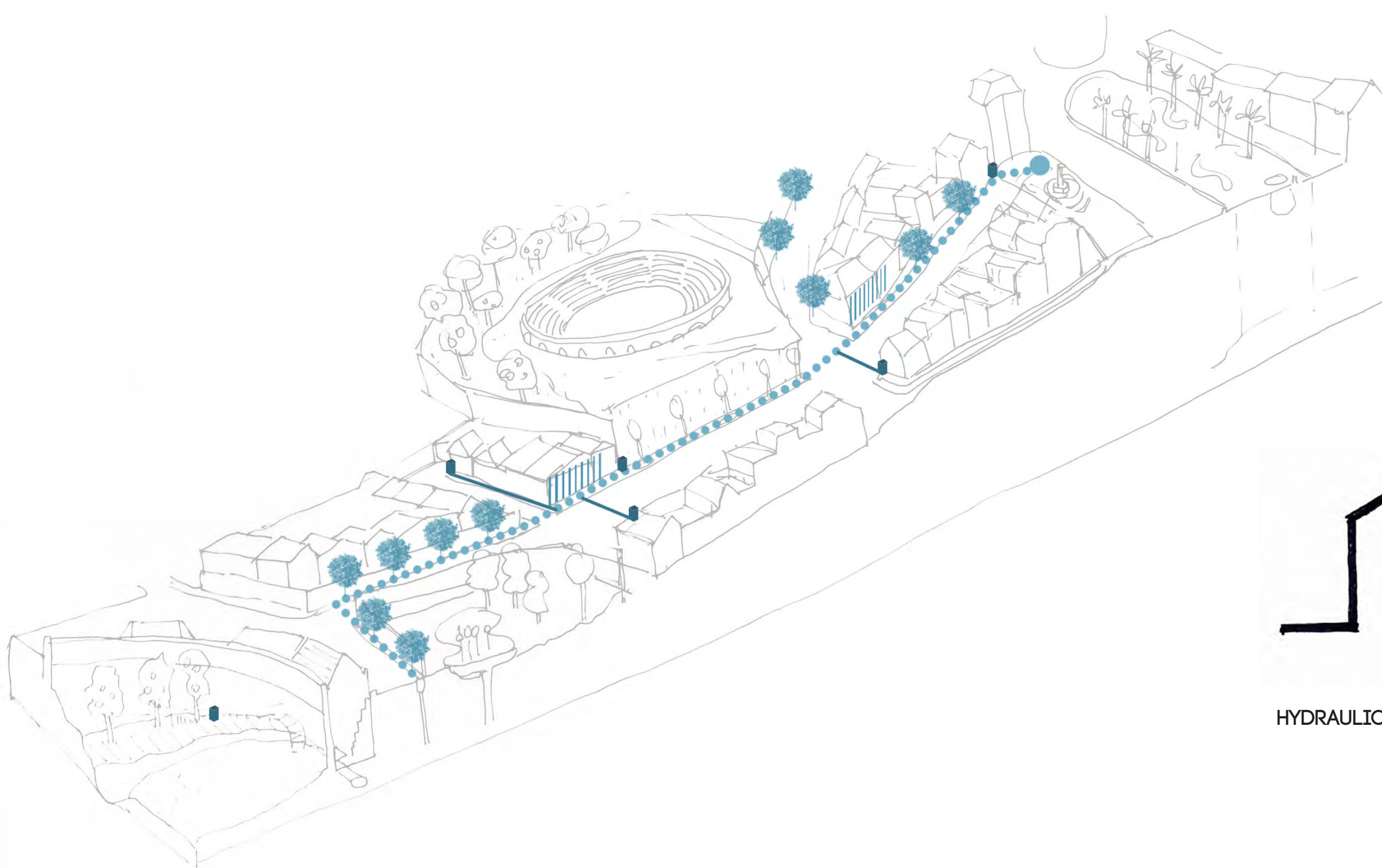
2 - CITY



ARENA

KING'S TOWER

WATER RELATED SYSTEMS
IMPROVEMENT OF THE QUALITY OF EVERYDAY LIFE

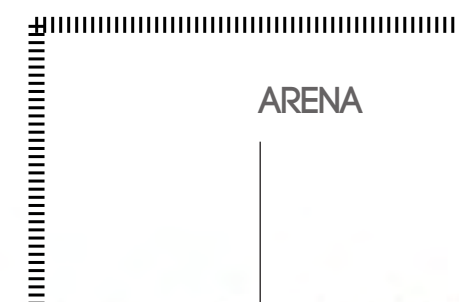


HYDRAULIC SYSTEMS: USING WATER PRESSURE

1 - COUNTRYSIDE



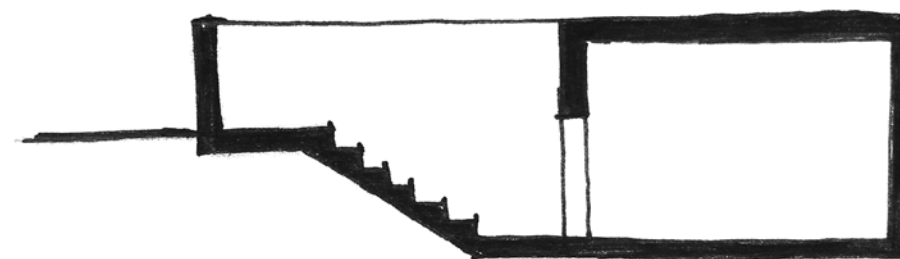
2 - CITY



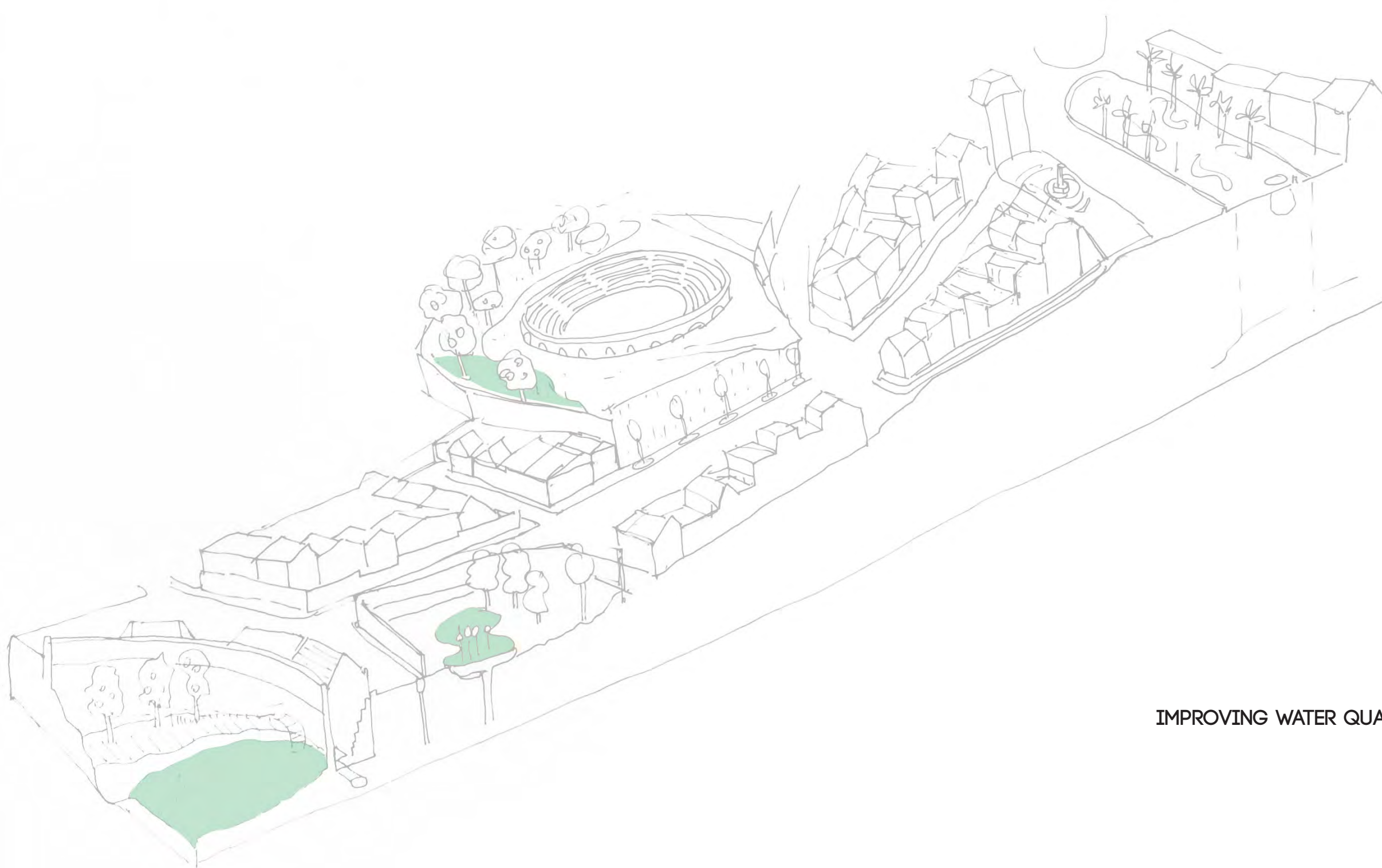
ARENA

KING'S TOWER

WATER RELATED SYSTEMS
IMPROVEMENT OF THE QUALITY OF EVERYDAY LIFE



WATER RELATED SYSTEMS IMPROVEMENT OF THE QUALITY OF EVERYDAY LIFE

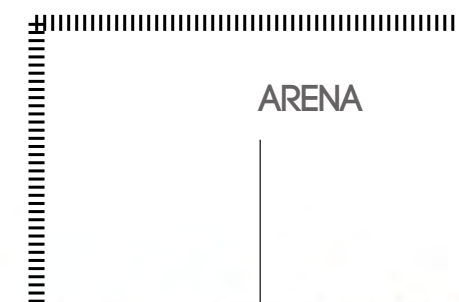


IMPROVING WATER QUALITY WITH DEPOLLUTING PLANTS

1 - COUNTRYSIDE



2 - CITY



ARENA

KING'S TOWER

WATER RELATED SYSTEMS
IMPROVEMENT OF THE QUALITY OF EVERYDAY LIFE

TRANSVERSAL CONNECTIONS



TRANSVERSAL CONNECTIONS
MINERAL AND NATURAL POROSITIES

· CONNECTION BETWEEN PLAZA
· ESPANA, PLAZA PORTUGAL AND THE
· COUNTRYSIDE WATER SYSTEM



· CONNECTION BETWEEN THE MARKET
· PLACE AND THE SCHOOL THROUGH
· THE SAN FRANCISCO GATE



· TRANSVERSAL CONNECTIONS BETWEEN
· TWO MAIN AGRICULTURE AREAS THROUGH
· A NEW SYSTEM OF OPEN GREEN
· COURTYARDS



TRANSVERSAL CONNECTIONS MINERAL AND NATURAL POROSITIES





RE-APPROPRIATION OF THE STREETS
PRODUCTIVE ACTIVATION OF THE STREETS
PERMEABLE GROUND

