

Population
60,000 + 6-7000 students

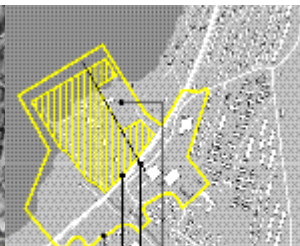
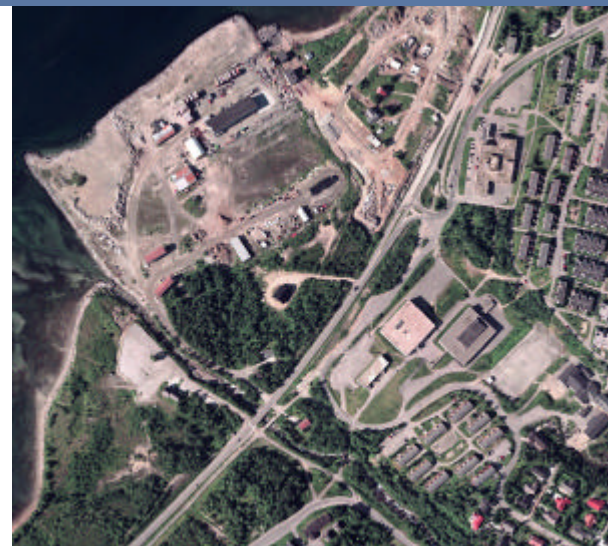
Location
Kroken

Study area
32.7 ha

Site area
8.5 ha

Theme

The main question is how rethinking the study area and the new project development on the site, can enable Kroken to evolve as an urban polarity in the Tromsø context. Urban intensity should be developed in an area with low programmatic and population density through the introduction of a new housing project. Kroken is now searching to establish the necessary variety to house a wide range of people in different life circumstances. The new project must seriously consider the challenges of the climate and the tendency towards urban sprawl.

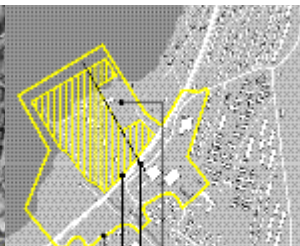


Conurbation

Tromsø is situated on 69° 40' 33" north surrounded by a sprawling rural countryside in a spectacular, pristine and vast arctic landscape. The climatic changes are dramatic in the arctic environment. The housing of Kroken has a poor spatial connections with the outside and a low quality of public space, compensated by good accessibility to the natural landscape.. Post-war housing development has not been designed for a sustainable approach to the climatic challenges.

Site

The site of Stenberg is an artificial piece of headland reaching into the Strait of Tromsø. It is located in the lower part of the satellite suburbia of Kroken. The symptoms are lack of spatial coherence, few public spaces and a disproportional infrastructure. Speculations in the study area could regard the site as a new attraction with urban functions relating to a considerable township of more than 9000 people. The transitions and borders between the different areas and between the built fabric and the infrastructure should be investigated.



Programme

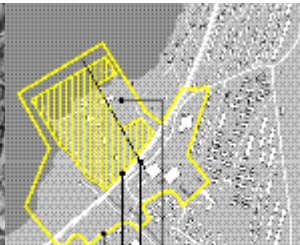
The investment of 700 future housing units should create a new urban landscape, set a new political focus on public investments and planning, implement a new density and intensity in the emptiness of the existing housing landscape, challenge the function and the existence of the local town centre and challenge a new definition of the regional road. In order to limit further dispersed growth of new suburbia into the surrounding scenery, densification and urbanisation of the existing suburban landscape is necessary.

Issues

functional : The aim is a layout of a master plan for 700 new housing units and a specific research of 200 units within this plan. Speculations in the study area are expected on how the new project should influence the transformation of the existing structures.

social : New prototypes for building typologies should be investigated, aiming at the demands of the new urban citizens of Tromsø. Several generous and experimental concepts for the children of suburbia should be investigated as part of the competition.

perceptual : The lack of spatial continuity and transition areas is a challenge. The study area should show a strategy for new connections in the urban- and natural landscape.



theme

conurbation / site

programme / issues

screens 1 / 2 / 3 / 4



theme

conurbation / site

programme / issues

screens 1 / 2 / 3 / 4

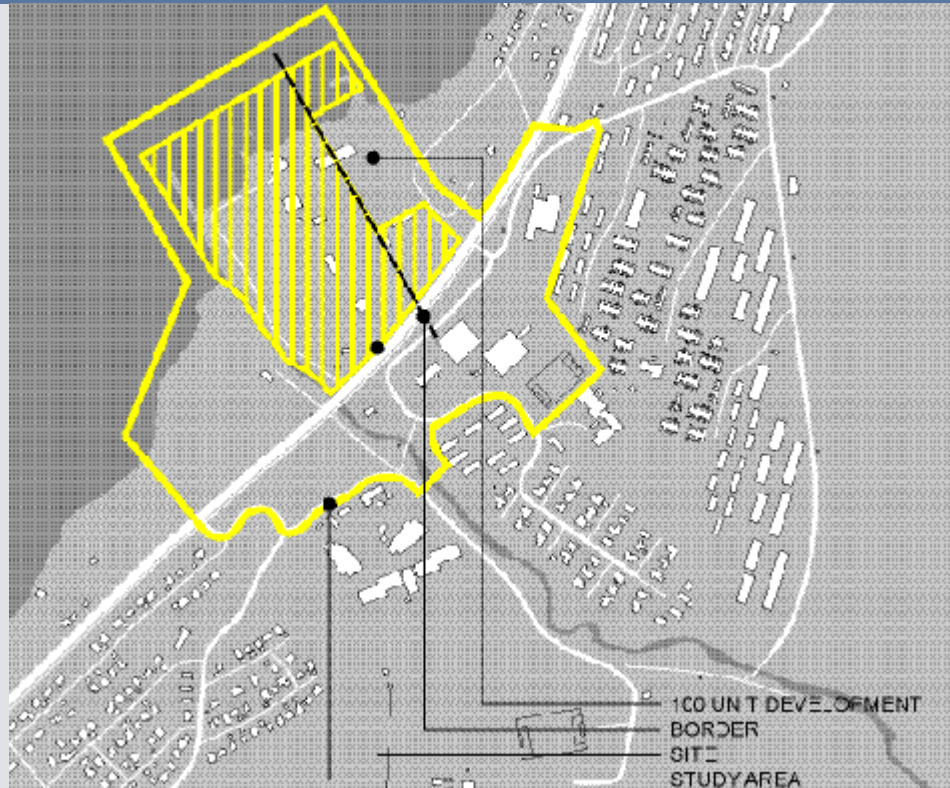


theme

conurbation / site

programme / issues

screens 1 / 2 / 3 / 4



theme

conurbation / site

programme / issues

screens 1 / 2 / 3 / 4



