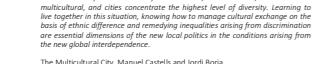


**Oras echilibrat** is an urban regeneration project with several purposes:  
 - To reverse the process of urban and social segregation in the project area.  
 - To develop support for local policies of **regeneration, inclusion and multicultural society**.  
 - To generate a **coherent and suggestive image** of the whole.  
 - To promote **the integration and reuse** of existing buildings.

The fundamental problem occurs with the immigrant population, especially Romanians of gypsy ethnicity. The project focuses on the idea that the solutions to be adopted do not consist only in the reconstruction of decent housing, but to promote urban strategies that ensure the gradual social integration of this population in the neighbourhood of San José and in Almendralejo in general. This is the only way to achieve a balanced city (exhibiting in Romanians) in terms of social equity.

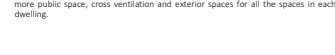
...we must accept the new reality, our societies, as it is, and we are not going to change it. We must accept the new reality, our societies, as it is, and we are not going to change it. We must accept the new reality, our societies, as it is, and we are not going to change it.



**URBAN STRATEGIES**  
 The main strategies that balance and reverse the process of social exclusion in the San José neighbourhood focus on housing, open spaces, equipment and work.



**Rehabilitation**  
 Today, the area where action is to be taken has almost double the number of dwellings per hectare compared to its immediate surroundings and the average for the city. This density has led to dangerous settlements with unsuitable conditions, excessive small dwellings and, in the dwellings in zones 2 and 3, a lack of ventilation and lighting. Spatially, the proposal reduces the density with the aim of obtaining more public space, cross ventilation and exterior spaces for all the spaces in each dwelling.



**1. Action on housing**  
**1a: Relocation**  
 74 housing units



**1b: Rehabilitation**  
 100 housing units



**2. Action on the open space**  
**2a: Connection**  
 2748m2 of connected squares



**2b: Naturalisation**  
 26 new trees, 6 ponds



**3. Action on the equipment**  
**3a: Detection of deficient centers:**  
 Equip.



**3b: 4 New useful and multicultural centers:**



**4. Action on the labour sector**  
**4a: Change of model**  
 10 new work spaces:



**4b: Dignification**  
 Seasonal workers:  
 (Agriculture in Suburbs fields)



**3. ACTION ON THE EQUIPMENT: utility + multiculturalism**

**Utility**  
 The approach of the competition programme states that the project area is very well endowed due to its proximity to the conglomerates of facilities on the other side of Almendralejo Street. However, we highlight two aspects that once again need the balance between zones: 1. Within the limits of the San José neighbourhood, the level of facilities is relevant, as shown in the level of public space. 2. The facilities in Calle Alfonso X are limited to sports and educational facilities, they are urban scale facilities and are insufficient to meet the demands of the residents of the neighbourhood.

We need spaces articulated with the nearby housing and that cover the needs of the groups of the Plan del Mariposa. These spaces are made up of platforms under the houses in zones 2 and 3. The programmes are set out below, although due to the flexibility and polyvalence of the spaces, these programmes can evolve and change depending on the circumstances.

We propose the following:  
 1. Multicultural centre (including Orthodox/Catholic chapel) and small mosque (under the block in zone 2).  
 2. Gastronomic school including multicultural restaurant (under the block in zone 2).  
 3. Consultar with office and co-working spaces (under the block in zone 2).  
 4. School of dance and folklore with multipurpose space for cultural and leisure programmes (under the block in zone 2).  
 5. Open-air sculpture museum (open space zone 2, 2 and 3).

**2. ACTION ON THE OPEN SPACE: connection + naturalisation**

**Connection**  
 Within the limits of the San José neighbourhood, there are no open spaces at all, which is another major urban imbalance. There is only a small grove of wooded areas at the entrance to block courtyard (Calle Rodríguez Marín), or at the entrance obtained from local requirements on Calle Rodríguez Marín.

In order to restructure this option, the proposal connects the open spaces on the other side of Calle Alfonso X with the weak presence of trees in the neighbourhood. This reduces the high or boundary effect of the street. The possibility of connection are explored to the maximum through a network of small squares and tree-lined pedestrian walkways.

The area of the open space between buildings is limited. In order to gain space, a large part of the ground floor of the buildings in zone 3 is freed up, and 4 covered squares are created above the lower parts of zones 2 and 3.

**4. ACTION ON LABOUR SECTOR: dignification + change of model**

**Dignification**  
 It is important to highlight that the management of the administration in these areas is confined by the integration in the multicultural teams: members of associations (such as the Immigrant Programme (Department of Social Services of the Regional Government of Extremadura - Almendralejo City Council) or the collaboration of Romanians or Moroccan organisations such as the Association of Romanians in Extremadura which is located in Almendralejo.

It is important to highlight that the management of the administration in these areas is confined by the integration in the multicultural teams: members of associations (such as the Immigrant Programme (Department of Social Services of the Regional Government of Extremadura - Almendralejo City Council) or the collaboration of Romanians or Moroccan organisations such as the Association of Romanians in Extremadura which is located in Almendralejo.

**Rehabilitation**  
 Today, the area where action is to be taken has almost double the number of dwellings per hectare compared to its immediate surroundings and the average for the city. This density has led to dangerous settlements with unsuitable conditions, excessive small dwellings and, in the dwellings in zones 2 and 3, a lack of ventilation and lighting. Spatially, the proposal reduces the density with the aim of obtaining more public space, cross ventilation and exterior spaces for all the spaces in each dwelling.

**1. Action on housing**  
**1a: Relocation**  
 74 housing units



**1b: Rehabilitation**  
 100 housing units



**2. Action on the open space**  
**2a: Connection**  
 2748m2 of connected squares



**2b: Naturalisation**  
 26 new trees, 6 ponds



**3. Action on the equipment**  
**3a: Detection of deficient centers:**  
 Equip.



**3b: 4 New useful and multicultural centers:**



**4. Action on the labour sector**  
**4a: Change of model**  
 10 new work spaces:



**4b: Dignification**  
 Seasonal workers:  
 (Agriculture in Suburbs fields)



The realisation of the European project makes no sense if at the same time its inhabitants do not obtain basic labour rights.

**Change of model**  
 The region we no longer harvested by hand. We are heading towards a countryside without farmers in the Almendralejo region. The tendency shows that fewer jobs will be needed in the near future. We have to propose alternative employment for migrant labourers who want to stay in the city, in their homes. The project proposes a series of spaces that can be gradually occupied by immigrants for whom we develop new work projects. Under the dwellings in zones 2 and 3, within the multicultural effort, workers would be needed for restaurants, schools, etc., and the ground floor of the dwellings in zone 1 would be destined for commercial premises.

**BALANCED CITY PLAN**  
 A population and a political class committed to city-making is essential. The opposite favour attitudes of rejection towards the difference. We need an active and concerted citizenry that connects a community and multicultural policy. A socially active citizenry calls for a socially inclusive and balanced city, i.e. one that is built in a shared manner between the different actors and the different sectors of citizenship.

We propose to define all the measures in an urban adaptation and rebalancing plan with concrete and time-bound points.

**Dequalify**  
 project area (in 5 years)  
 1. As a general concept: A political climate characterised by asertiveness and courage involving various levels of public office. Transversal to the mobilisation of the Administration's resources. Sensitive and empathetic towards the actors involved and with specific training in the field.  
 2. Development of the plan for the conversion of 170 to 200 dwellings belonging to the Mariposa flats by means of ARREB (Red for Urban and Rural Regeneration and Renovation) of the Regional Government of Extremadura. (Project proposed in the tender proposal)

**Dignification**  
 We intend these spaces to function as cultural catalysts with a large ripple effect on a city-wide scale and to be identified with the presence of immigrants of varied ethnic origin as well as citizens of local origin. Fostering this synergy is the leitmotif of the project.

**Rehabilitation**  
 Today, the area where action is to be taken has almost double the number of dwellings per hectare compared to its immediate surroundings and the average for the city. This density has led to dangerous settlements with unsuitable conditions, excessive small dwellings and, in the dwellings in zones 2 and 3, a lack of ventilation and lighting. Spatially, the proposal reduces the density with the aim of obtaining more public space, cross ventilation and exterior spaces for all the spaces in each dwelling.

**1. Action on housing**  
**1a: Relocation**  
 74 housing units



**1b: Rehabilitation**  
 100 housing units



**2. Action on the open space**  
**2a: Connection**  
 2748m2 of connected squares



**2b: Naturalisation**  
 26 new trees, 6 ponds



**3. Action on the equipment**  
**3a: Detection of deficient centers:**  
 Equip.



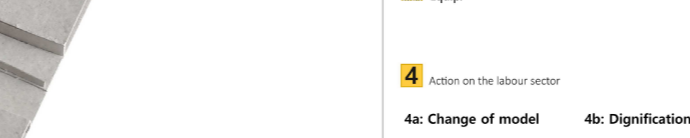
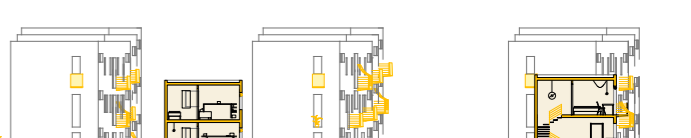
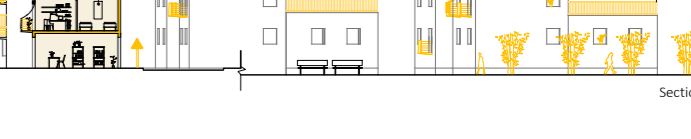
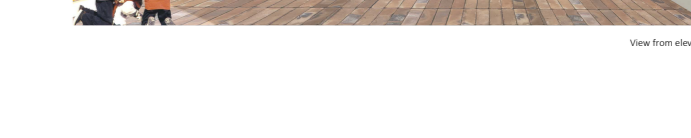
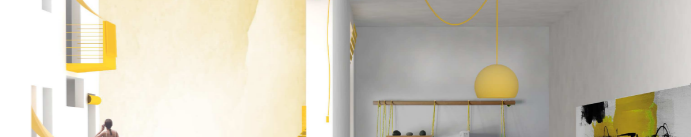
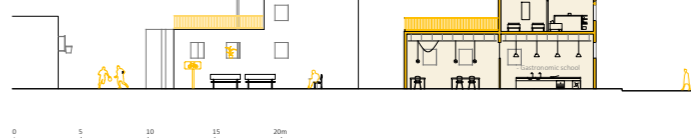
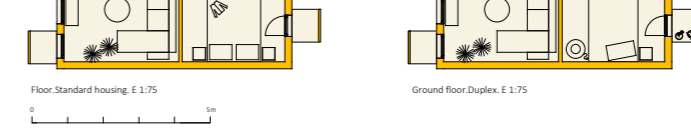
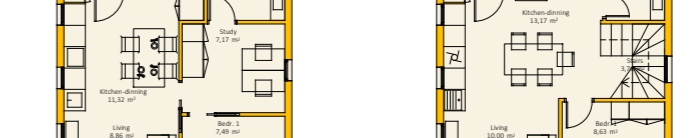
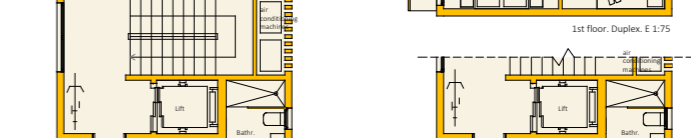
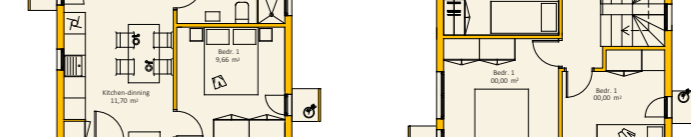
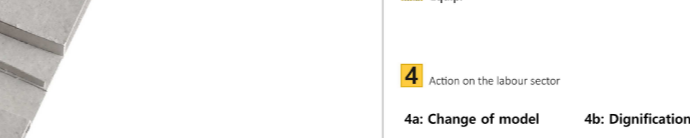
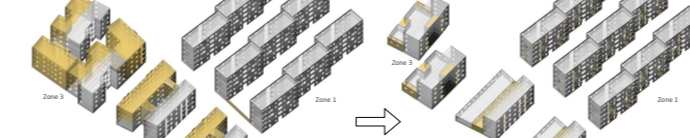
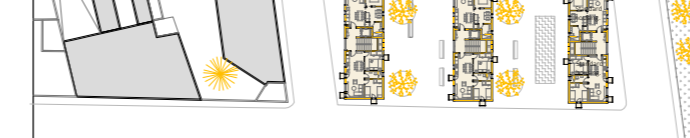
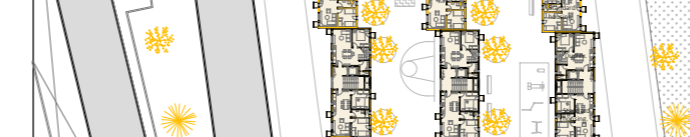
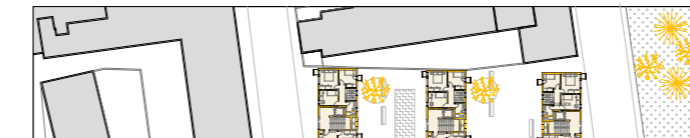
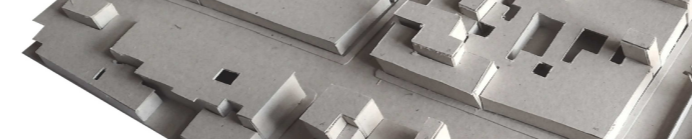
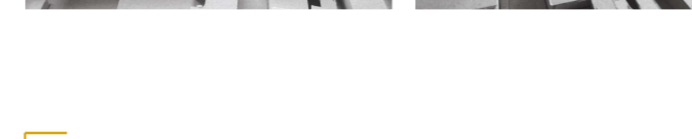
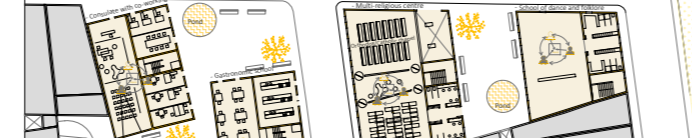
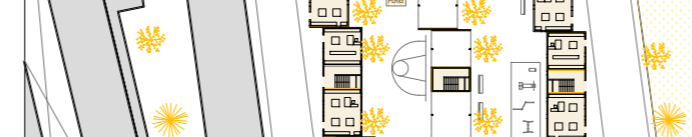
**3b: 4 New useful and multicultural centers:**



**4. Action on the labour sector**  
**4a: Change of model**  
 10 new work spaces:



**4b: Dignification**  
 Seasonal workers:  
 (Agriculture in Suburbs fields)



**1. Action on housing**  
**1a: Relocation**  
 74 housing units



**1b: Rehabilitation**  
 100 housing units



**2. Action on the open space**  
**2a: Connection**  
 2748m2 of connected squares



**2b: Naturalisation**  
 26 new trees  
 6 ponds



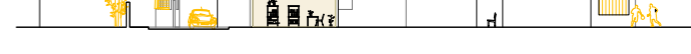
**3. Action on the equipment**  
**3a: Detection of deficient centers:**  
 Equip.



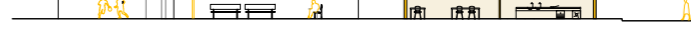
**3b: 4 New useful and multicultural centers:**



**4. Action on the labour sector**  
**4a: Change of model**  
 10 new work spaces:



**4b: Dignification**  
 Seasonal workers:  
 (Agriculture in Suburbs fields)



Interior view of a home

Small square between Residential buildings

Section E:1:200

Section E:1:200