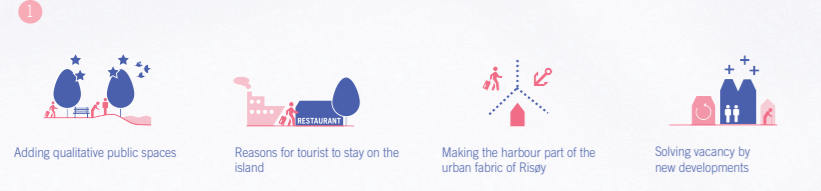
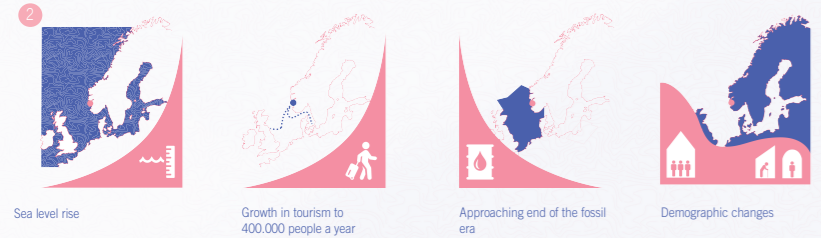


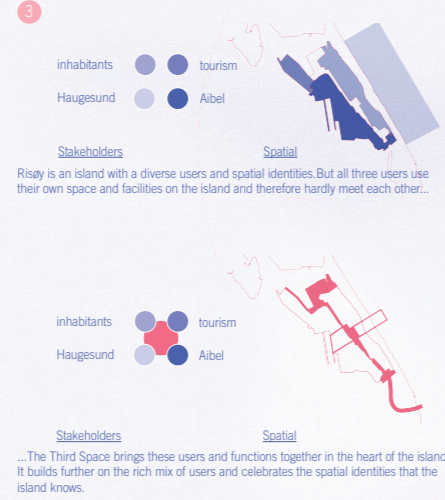
MISSING LINKS



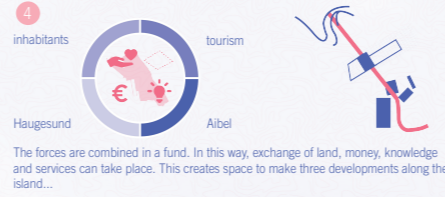
DRIVER FOR CHANGE



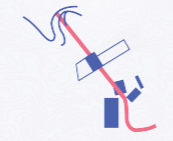
THE THIRD SPACE AS CONNECTOR



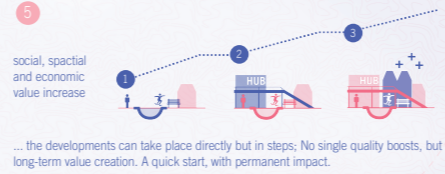
FUND RISØY



3 KEY PROJECTS



TOWARDS A CONTINUOUS VALUE DEVELOPMENT



THE THIRD SPACE

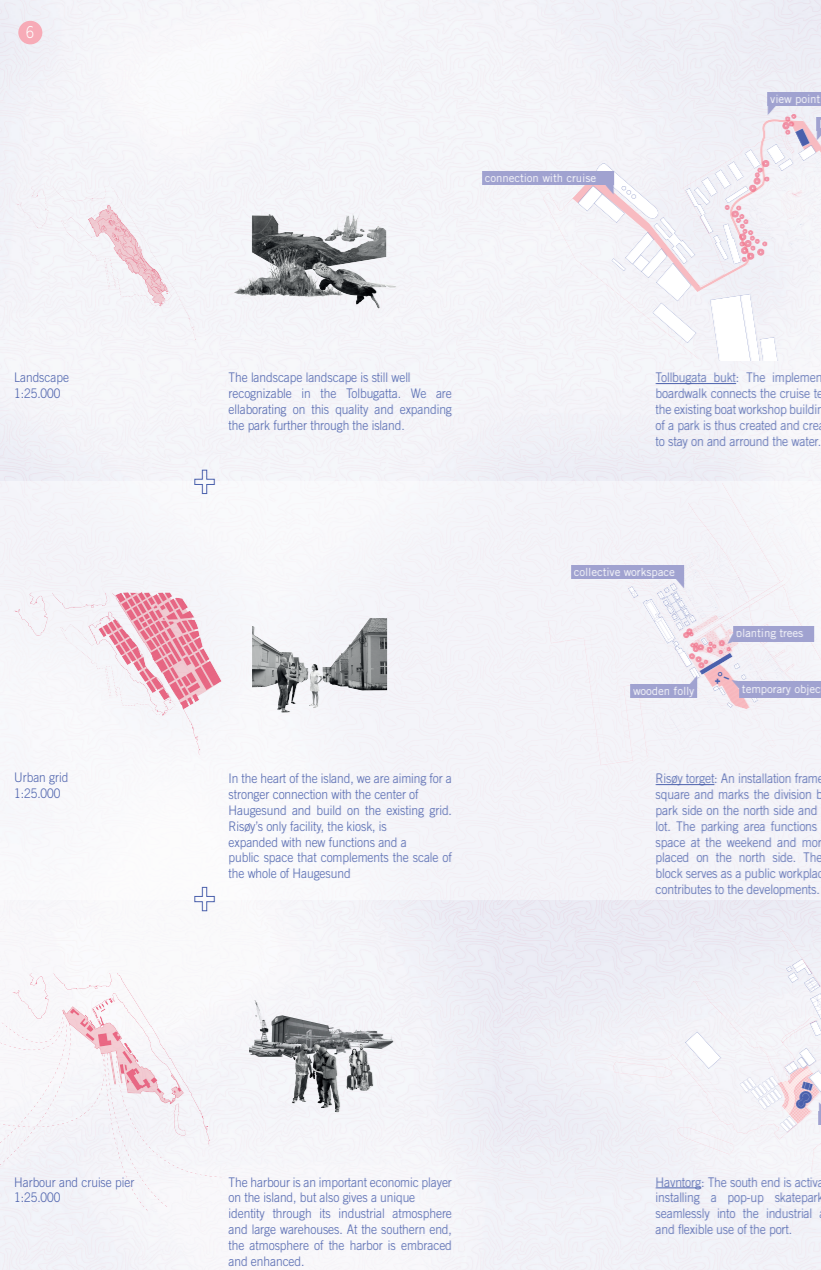
A LINE WHERE RISØY CAN CELEBRATE ITS CONTRASTS

Image below
The realisation of the boardwalk starts in the first phase and will be placed on the line of the original quay. This boardwalk creates the spine of the future developments of the park. New plants will be planted along the path which match with the Norwegian story landscape. The hotel, restaurant and new dwelling are situated along the path.

Image right
At Tollbugata bukt exists a synergy between humans, plants and animals. This results in a local park that addresses multiple tasks at once: It protects Risøy against the rising sea level, creates meeting spaces, gives an impulse to the biodiversity and becomes an impressive entrance of Haugesund (and all of Norway) for tourists.



BUILDING FORWARD ON THE MIXED IDENTITY OF RISØY



STEP 1: SOON

DRIVER FOR CHANGE

STEP 2: LATER

STEP 3: POTENTIAL FUTURE OF RISØY. DEVELOPERS AND INVESTORS BUILD FORWARD ON STEP TWO.

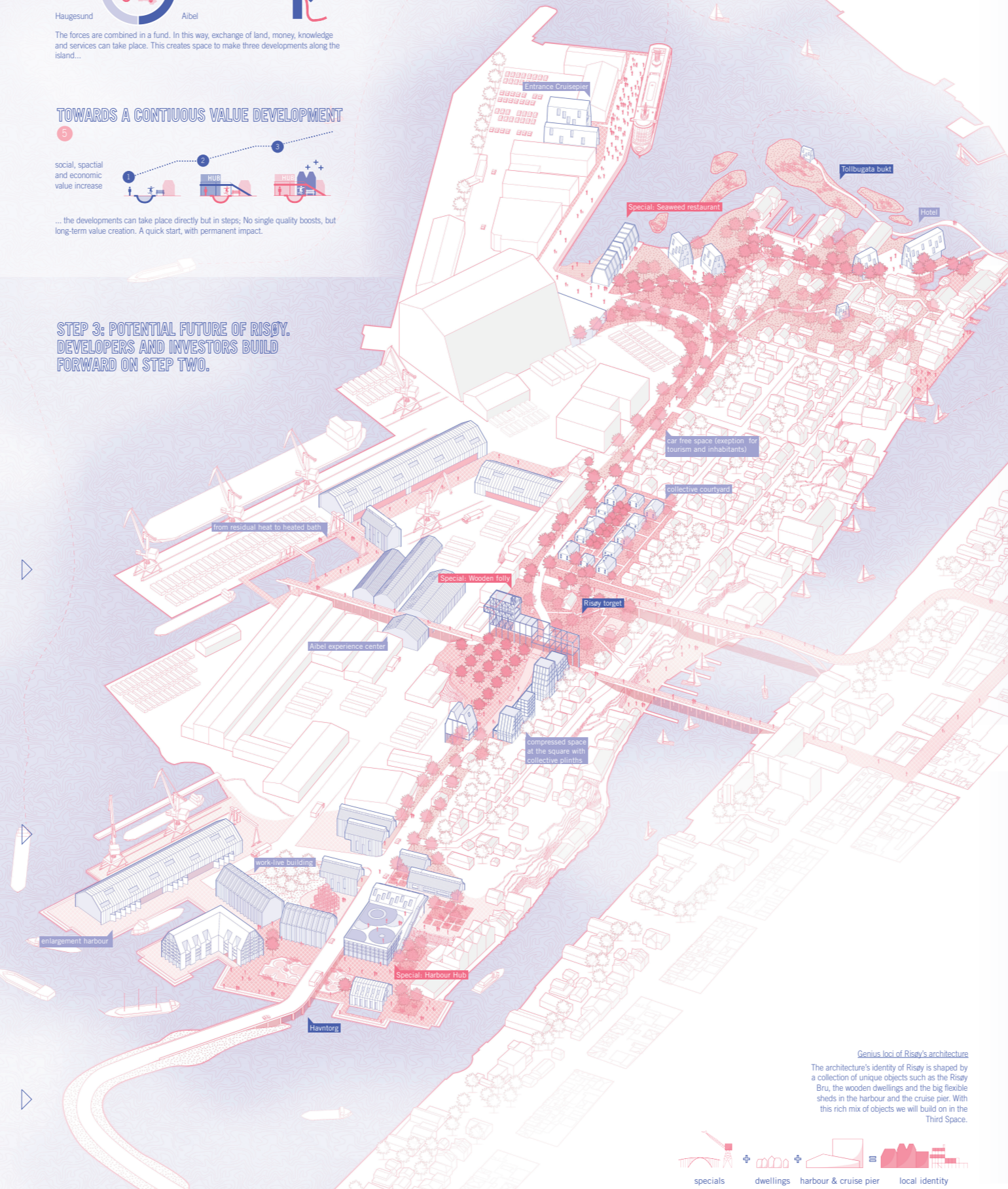


Image below
The wooden folly has an important position in the plan and functions as a link between the squares and the green park around the bridge. The north and west facades are covered with ivy plants and several nest boxes for various types of birds. The south side of the folly gives space to a small kiosk. Underneath the folly the pavement and green meet, the park continues behind the folly the existing park that folds

Image right
The square is formed by the addition of new buildings with collective plants (lobby, laundry room or commercial functions). The mix of these collective plants with apartments on top ensures liveliness on the square at all times of the day. The square remains its view to the west side, creating a balcony on the harbor with a view of the sea. A unique place for the whole of Haugesund, also for events, where all the different identities of the island come together.



Image below
The new bridge on the south end of the island is used spatially by making it part of the places that arise below and next to it. For example, the bridge illuminates the public space below, the columns merge into the ramps of the skatepark and the bridge forms the roof of the entrance of a residential building that is being built next to the bridge. The bridge does not form a barrier, but gathers functions as a connector.

Image right
The harbour area will be expanded to offer Albel room for growth and to be able to experiment with the transition to a sustainable harbour. With this expansion, the harbour can also become a spatial part of the island by creating a continuous public space and add program items that fit within this context, such as a MobilityHub and a skate park.



Genius loci of Risøy's architecture
The architecture's identity of Risøy is shaped by a collection of unique objects such as the Risøy Bru, the wooden dwellings and the big flexible sheds in the harbour and the cruise pier. With this rich mix of objects we will build on in the Third Space.

