

BEIZAMA (ES)

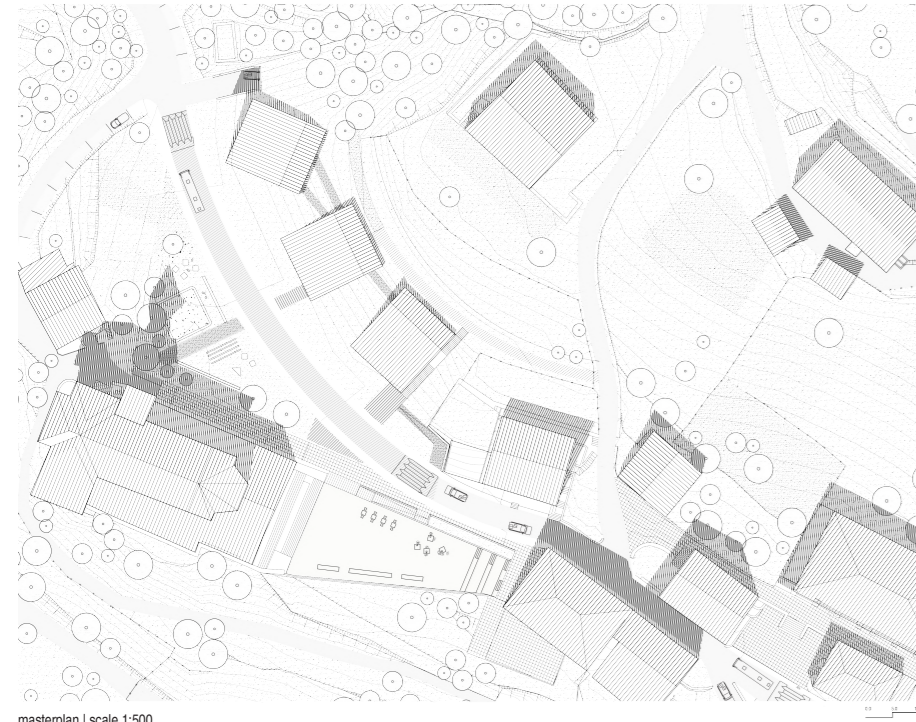
UP THE HILL

UP THE HILL is a social housing project that seeks to explore a new concept of living and working that unfolds in the context of the rural environment of Beizama (Basque Country, Spain). The proposal aims to actualize an innovative residential model, one that combines multiple scenarios of working from home with the direct relation to the rural context, in such a way that the contemporary needs are introduced back into a dynamic and circular connection to nature. The balance between the intervention and the landscape is a crucial aspect of the design, in order for the project to essentially become part of the village, standing in dialogue with the environment, both natural and built.

Part of this intention was the decision to maintain the scale of the local built environment, by introducing three separate volumes 13m x 15m, instead of a single building unit. Each volume is situated on the plot at a different angle. This configuration intends to achieve better orientation, plurality of different exterior views and communication with the existing village typology. By placing the three buildings partly inside the hill, connected to one another by exterior paths, the slope between the buildings remains mainly untouched and natural. The volumes appear as if emerging from the landscape, having as a result the organic relationship between the built and the un-built, where both coexist in a dynamic yet organic way. In order to create more opportunities for the existing and the newly arrived inhabitants to gather, engage in activities and socialize, an enhance of the existing public space is considered important. Towards that direction, in addition to the square that already exists, the creation of an open-air public space is suggested, where the natural element prevails and a modern playground is located.



aerial view



masterplan | scale 1:500



exterior view

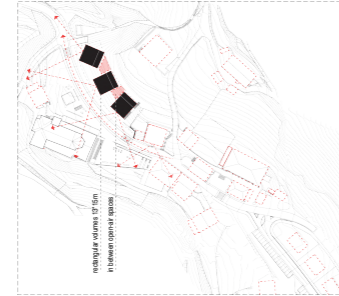


diagram of orientation and the typology of the village as a key designing tool | scale 1:2000



diagram of the crucial public open air places | scale 1:2000



diagram of the public uses and the enhance of the public central axis | scale 1:2000



diagram of circulation and connectivity | scale 1:2000



diagram of the nature as a designing tool derived from the context | scale 1:2000

1

BEIZAMA (ES)

UP THE HILL

The architectural proposal draws from the interpretation of the traditional farmhouse found in the region, the Baseri, which was examined as an example of successfully intertwining living and working into the same unit, as well as one that accommodates more than one family. The new typology emerges as a hybrid outcome of the type of the detached housing and the multiple apartment building, empowering the interaction between residents and the nature, as well as creating spaces of convergence. The volume in the middle takes up the main entrance and the vertical connection and distribution system which leads to the other volumes' floors and the ground-floor parking. It also links the entrance level (+0.0m) to the pedestrian track on the top of the slope (+10m), which allows all residents to reach their house also from the top. The entire ground floor of the volume on the right takes up the public facilities, on account of the closer proximity to the central square and the rest of the village. Towards the achievement of a low-maintenance and energy efficient solution, we suggest the use of sustainable building materials that can be locally acquired, such as stabilized rammed earth and oak wood. Additional environmental strategies optimize the performance of the buildings.

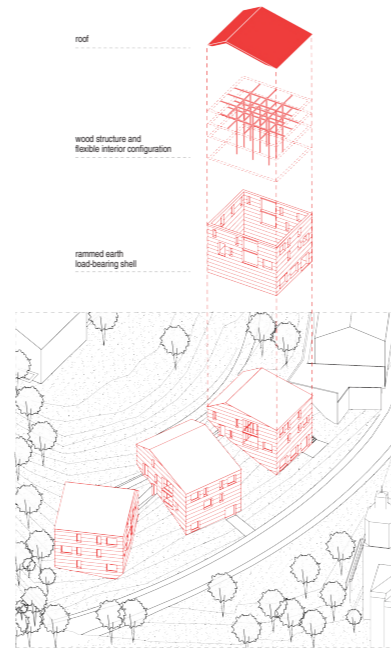
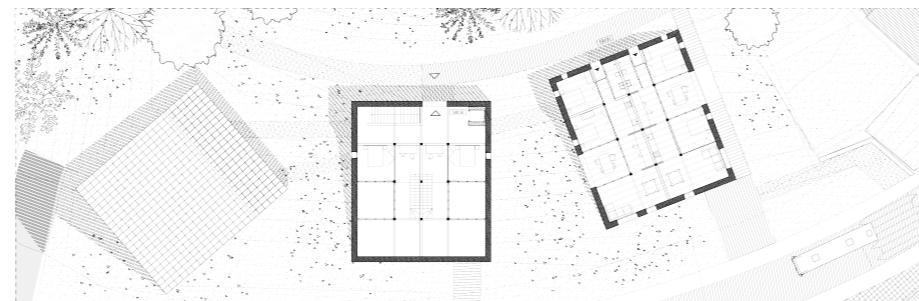
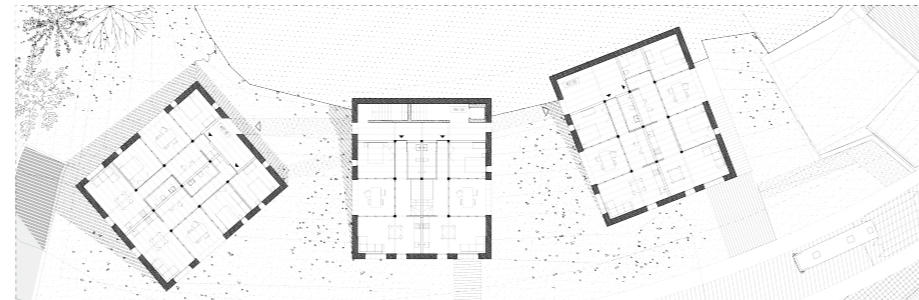


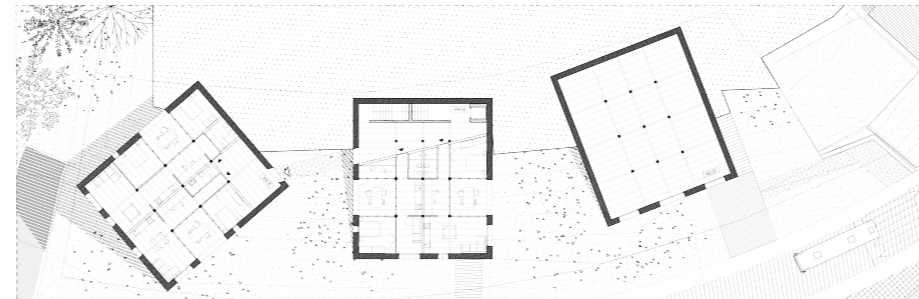
diagram of the basic components derived from the traditional "baseri"



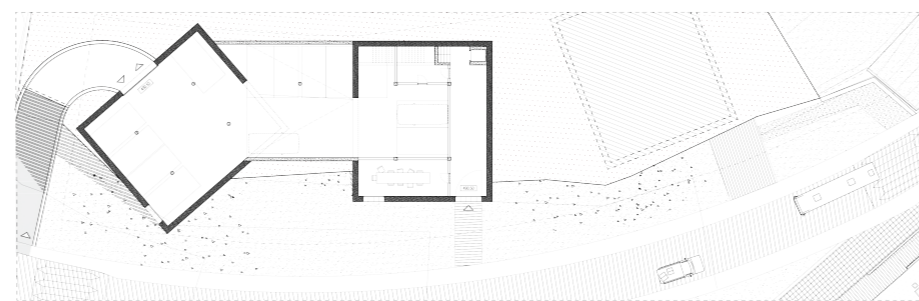
plan level +500.5 m (+10m) | scale 1:250



plan level +497.5 m (+7m) | scale 1:250



plan level +494.5 m (+4m) | scale 1:250



plan level +490.5 m (+0.0m) | scale 1:250



exterior view

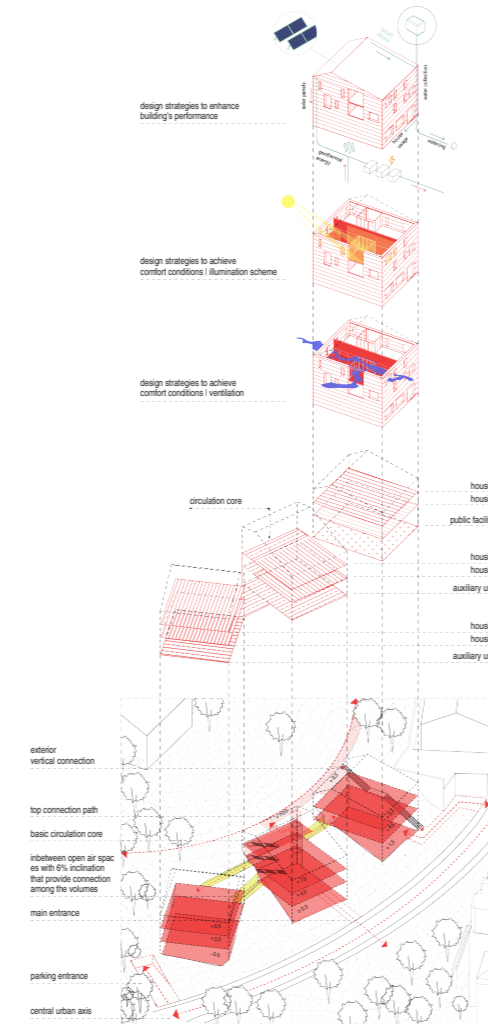
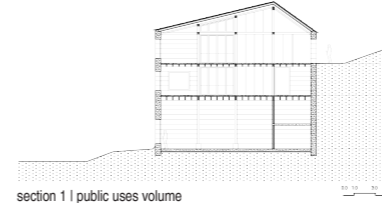
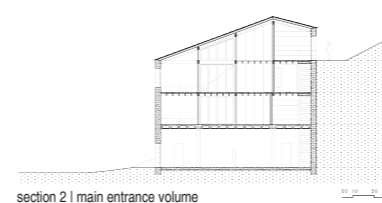


diagram of the circulation | uses | environmental strategies



section 1 | public uses volume



section 2 | main entrance volume

2

BEIZAMA (ES)

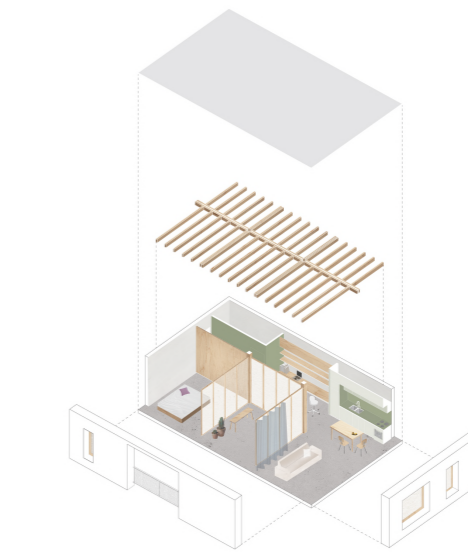
UP THE HILL

The typology consists of four different same sized rooms along the biggest facade, one of which is exterior, allowing flexible uses and appropriations by the inhabitants. Each room is placed within a grid of 3.50 x 3.50m. Parallel to these rooms, a narrower row of spaces placed within a grid of 3.50 x 2.50 m takes up all the utilities and wet areas. By building permeable and movable walls, like folding wooden doors and windows, each room can be totally open or closed to the next, allowing a diverse range of possibilities according to the inhabitants wishes and desires. An important component that is introduced to the housing typology is the interior balcony as a hybrid space. It is a room that is in a way both an interior and exterior space, equal in size to the other four rooms composing the apartment, and can host a plurality of uses. Furthermore, by carefully placing them on each side of the volumes, natural light and proper ventilation in the whole of the housing unit is achieved. The multiple combinations can support various living and working scenarios that can be expressed in 3 housing typologies:

T1 one-bedroom apartments x 4

T2 two-bedroom apartments x 6, including an apartment that can be adjusted in order to accommodate persons with disabilities

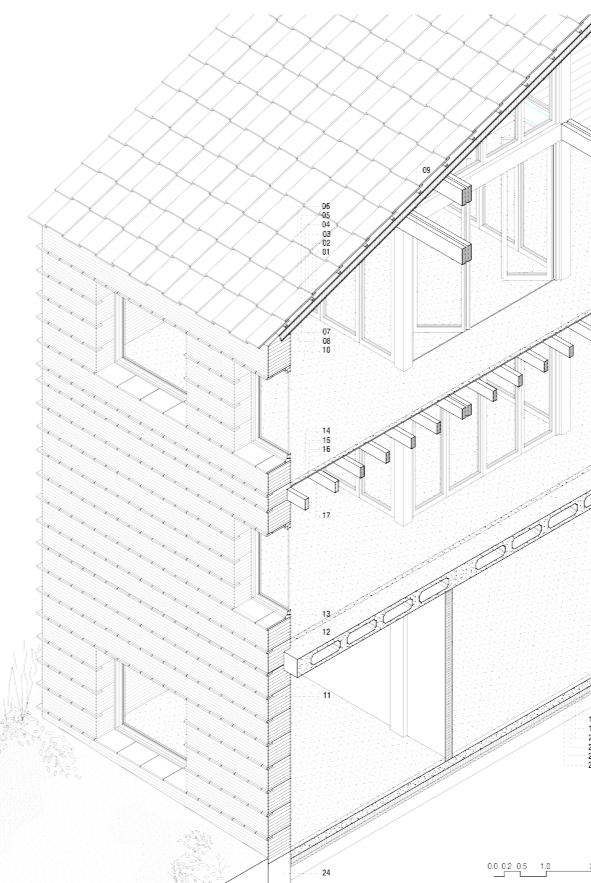
T3 two-bedroom duplexes (floor-loft) x 2



exploded axonometric view of the T1 one-bedroom apartment typology



exploded axonometric view of the T3 duplex typology



- Roof structure**
- Mud tiles 30 mm
 - Tiling battens 25 mm
 - Counter battens 25 mm
 - Waterproofing in-between tiling battens and counter battens
 - Waterproof floorboard 20 mm
 - Thermal insulation 120 mm
 - Vapour barrier
 - Wooden board 20 mm
 - Wooden beams 80 x 200 mm

- Facade**
- Rammed earth wall 500 mm
 - Mud brick as erosion protection
 - Wooden board and clay lime plaster (when needed)
 - Laminated wooden window with double glazing 68 mm

- Floor structure**
- Polished concrete floor, finished with waterproof layer 60 mm
 - Polyethylene spacer sheet
 - Wooden board 20 mm
 - Wooden beams 80 x 200 mm

construction detail perspective section



interior view

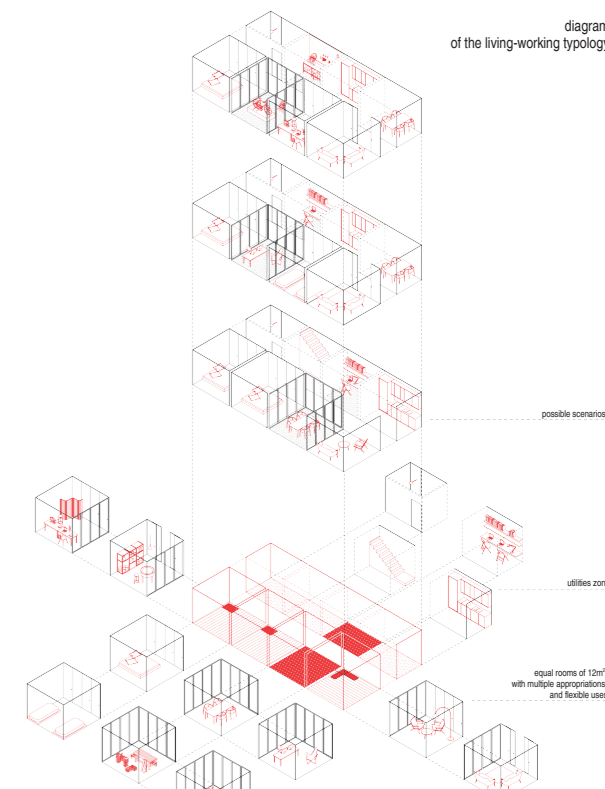
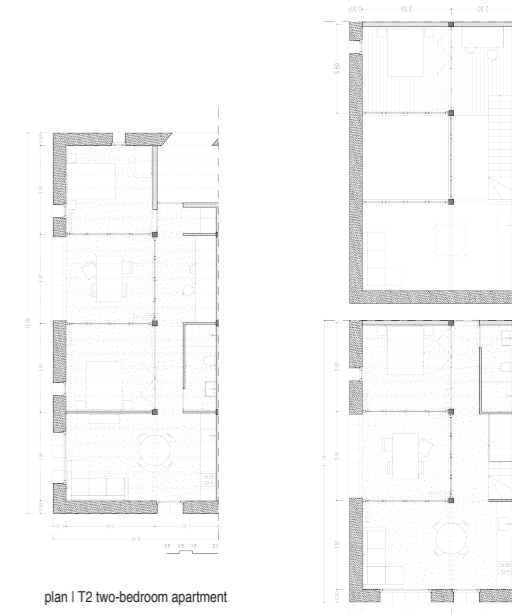


diagram of the living-working typology

possible scenarios

utility zone

small rooms at 12m² with multiple appropriations and flexible use



plan | T2 two-bedroom apartment

plan | T3 two-bedroom duplex

3