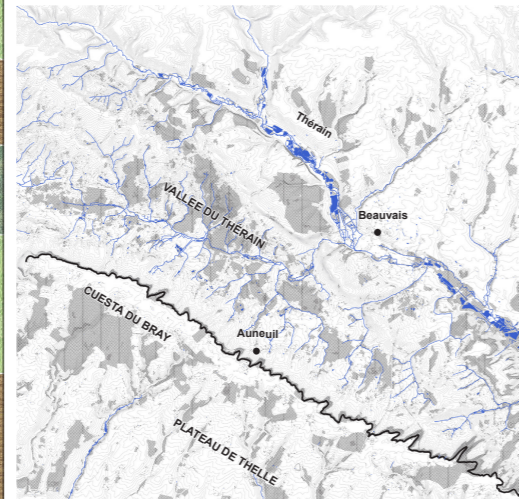
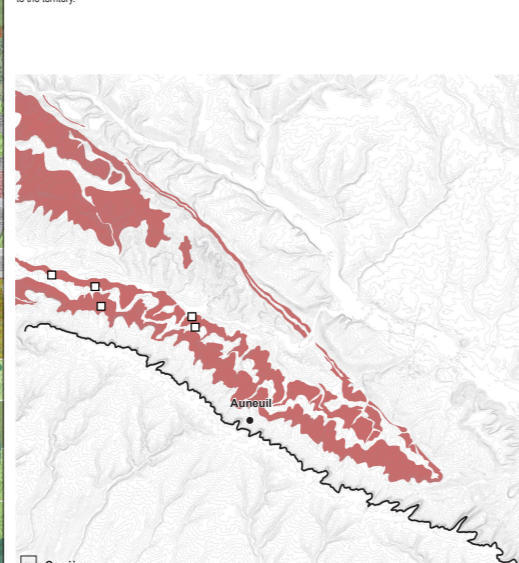




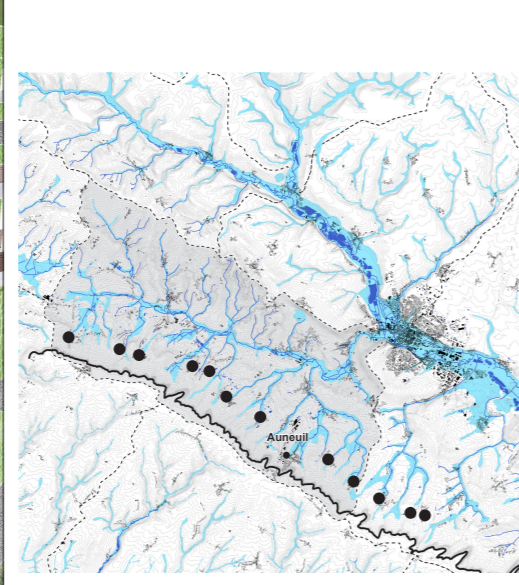
Reveal



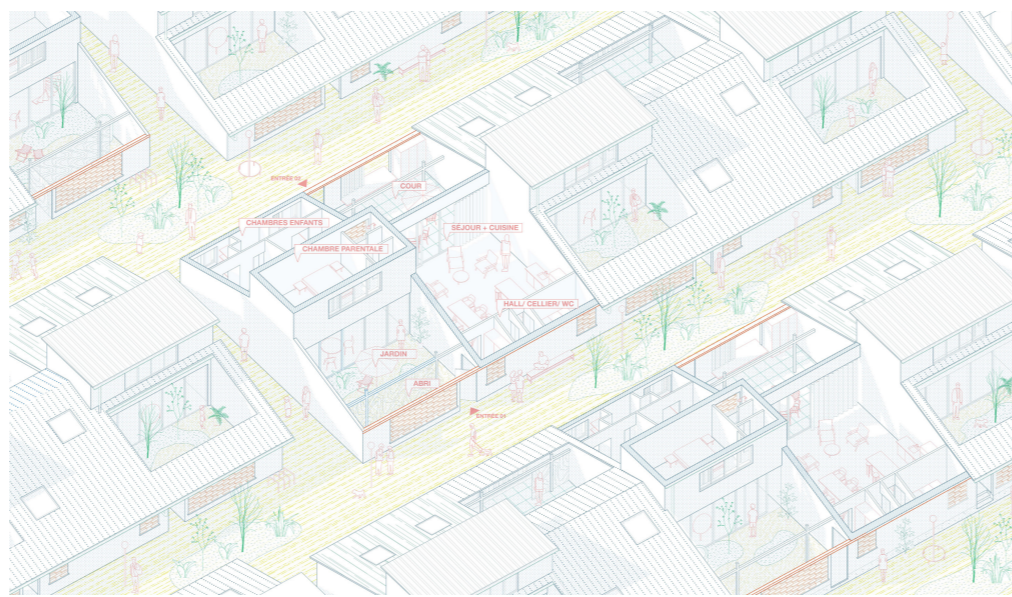
Major landscape figures.
Auneuil is part of a complex landscape system made up of the aesthetic uses and natural features that need to be defined in order to understand its strengths and weaknesses. Inhabited, crossed or emptied, these figures have defined the progressive organization of the territory and have shaped its memory. Auneuil is located at the foot of the Cuesta du Bray, a steep geological chalk fault overlooking the Thieran valley and dividing the Thierle Plateau from the well-located landscapes downstream, crossed by numerous streams. This landscape boundary serves as a refuge for a biological heritage of high value (NATURA 2000 zone), although the progressive fragmentation of the valley's forests has separated it from other natural spaces. Reconnecting continuity between these figures, now altered by man, is essential to continue to give meaning to the territory.



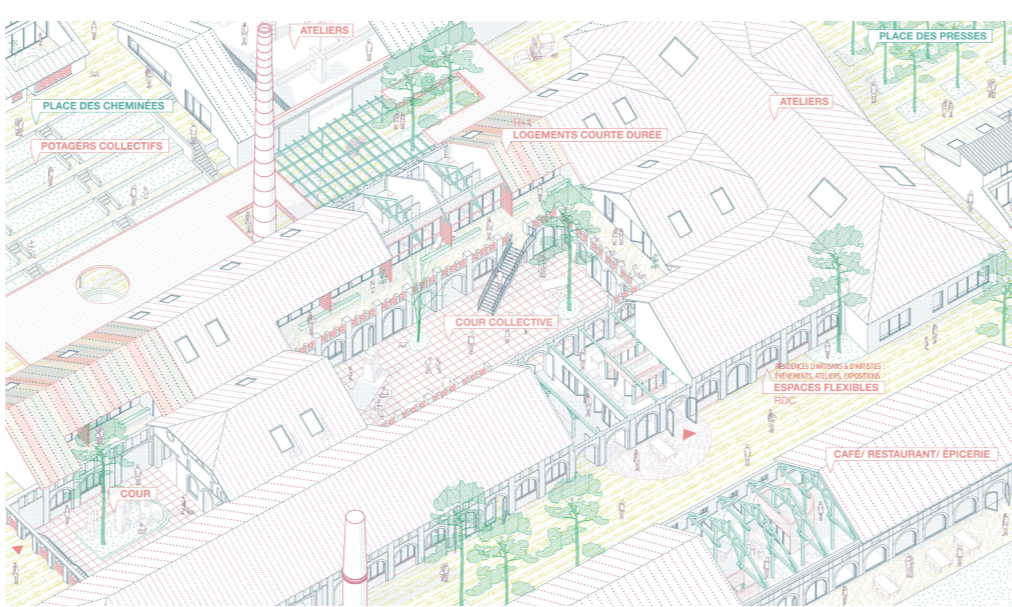
Geological Nature.
The soil of the Pays de Bray is a figure charged with a double distinctive natural and cultural value. Natural because its large impermeable clay outcrops (in red) have made it a natural landscape capable of supporting abundant vegetation, and culture because it has given rise to a tradition and an industry of pottery and ceramics that once flourished. The numerous quarries (black border squares) present in the valley and the rich heritage bequeathed by the Boulanger factory attest to this. Nowadays, the soil has been neglected, but it is no longer possible to avoid it as an element of the project.



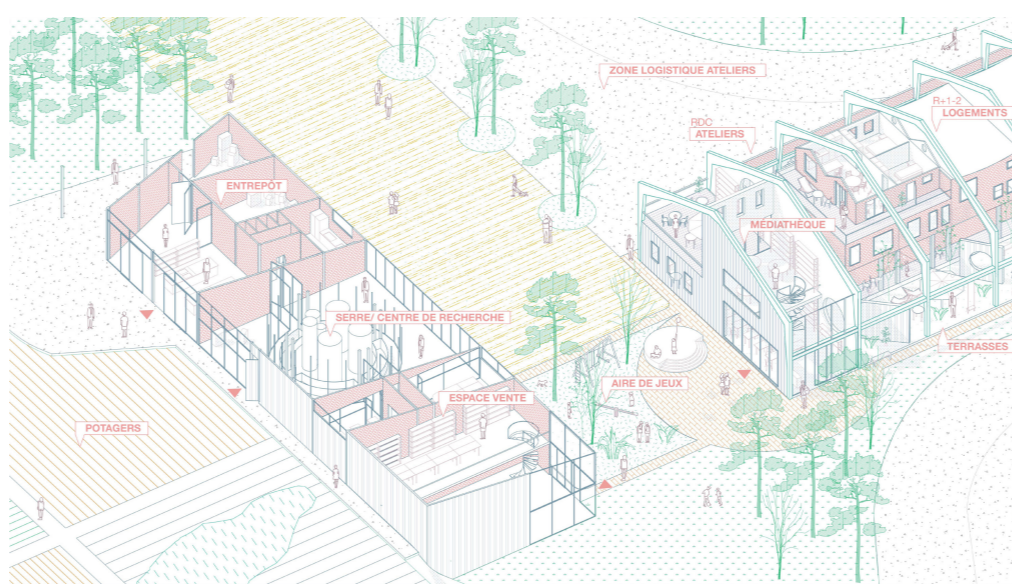
Flooding.
Despite the richness it brings, the clayey nature of the soil also contributes to the vulnerability of the territory. The frequent flooding of the valley bottom, the rising of the water table and the mud flows are a result of the impermeability of the soil. These phenomena are amplified by global warming and the disruption of natural systems caused by soil mineralization, construction in wetlands and deforestation (flood hazard in case of extreme event in light blue). To face these catastrophic events, a logic of watershed solidarity must be adopted: those upstream must retain the water as long as possible before it reaches the valley floor. At the foot of the Cuesta, a forest of small towns capable of assuming this exemplary role is emerging. Auneuil is one of them.



Grouped dwellings. Promote flexible housing.
Housing can also entail a new urban and social vitality, and this can be achieved through grouped housing. The evolution of flexible and the increasingly sharing materials that divides nature/culture can envisage a new way of conceiving the habitat. The daily and temporal flexibility can be the source of this renewal. The proposal aims to submit the architecture to the cyclical and generational needs of its inhabitants. These places can grow and then be subdivided into different cells. Places that were previously private can later become shared. Thus, a single-family dwelling can be transformed into a multi-generational dwelling while keeping the "prevailing" morphology and the original regulating plan. This means taking into account the natural cyclical processes but also the infrastructural and material ones.

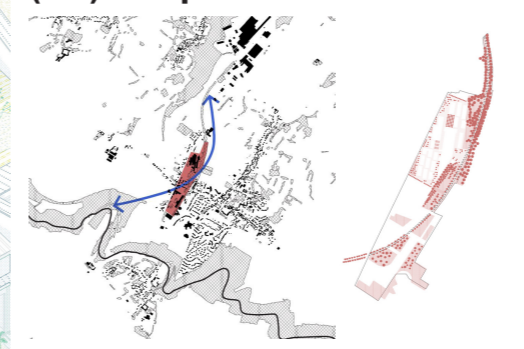


Usine Boulanger. Organic mix.
The Boulanger factory may be perceived at first glance as an indivisible built entity, but it must be at the heart of a more global ecosystem. In this large architectural ensemble, the exterior and interior spaces are fertile grounds for activating relationships between functions, uses and environment. Far from the desire to create new formal typologies, which would imply a discontinuity, the approach chosen aims to inscribe itself in a relationship of belonging, contextual and morphological but also material, such as the markers of a shared memory.

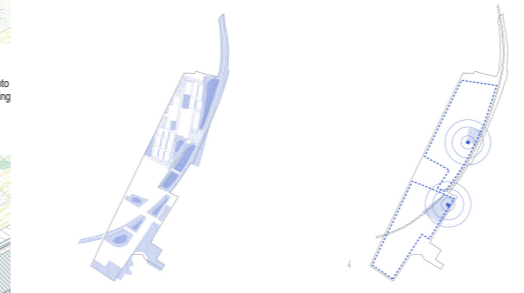


Agricultural cluster. A whole.
Productivity must be thought as a whole. The place of agriculture reveals what the site can offer in terms of primary, necessary and vital resources. By combining with public facilities, this place is part of the productive territory. Moreover, the position of the agricultural pole allows us to pass from the scale of the urban to the scale of the rural. It helps to make the transition between what is of the order of the built scale and the order of the rural scale. The event space is oriented towards the side of the town, while the production and research areas face the outer periphery of the site.

(Re)compose



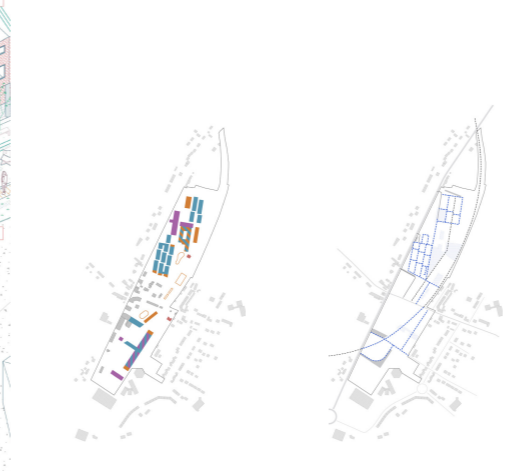
Do as much as possible, whatever the scale.
The Boulanger site must become a landscape link. A green corridor along the Thieran one allows for the reconstruction of the forests of the valley to the natural spaces of the Cuesta.



Blue mesh.
Rainwater is collected, infiltrated and timed in a series of natural devices: foodable green areas, rain gardens, infiltrating pavements.



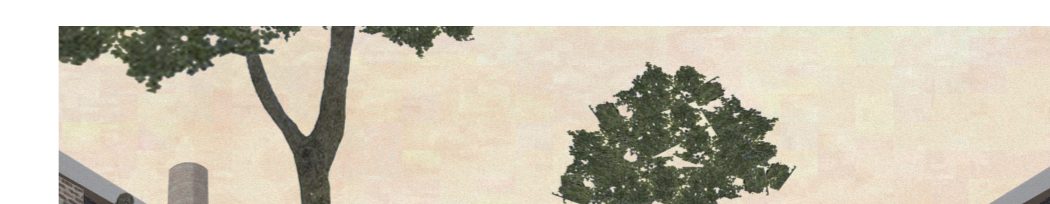
Recover.
Valuing existing materials to preserve the memory of the place. Or how to anchor the new to the existing.



Diversity.
Diversity interactions between habitats, services and productive activities.



Grouped housing. Affirm the environment.
The grouped dwellings, like the old "chapelet" buildings of the last century, are in keeping with the character of the old village structure. As a reminder of the past, where the Boulanger factory left its mark with its life and ceramic production, it is the play of bricks, resulting from the geometry of the site and the recovery, that composes these new living spaces.



Blue mesh.
Rainwater is collected, infiltrated and timed in a series of natural devices: foodable green areas, rain gardens, infiltrating pavements.



Usine Boulanger. Productive interface, a new belonging.
The Boulanger factories are articulated in a network of streets, alleys, courtyards, squares and connecting passages. They offer a reasoned urban scale, neither entirely urban nor entirely rural. It is a sense of belonging where residents, workers and visitors of a time can cohabit. New functional, recreational and productive amenities are offered. These outdoor "rooms" spatially linking the different buildings (squares, courtyards) are points of intensity on the site for the users. They feed the life of the buildings that surround them. Each of them is governed by various programs that within its "rooms" are places of life. As points of articulation, they preserve the domestic coil and the aspiration to community and socialization.

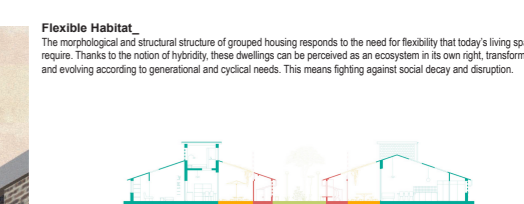


A new balance. A double frame.
The southern zone is symbolized by its multi-purpose identity, it inevitably raises the question of the cohabitation between industry, equipment and housing whose proximity relationship is more than certain. Therefore, the mix is a major issue. In addition to preserving the existing buildings, new ones are being added to create a new territorial perimeter. Three large blocks are now materialized while extending the continuity of the green corridor. The former Colin Muller factory is now turned towards a logistic zone in the interior of the block, bordered by workshops, while leaving room for housing on the upper floors, which are turned towards the surrounding landscape. A double orientation is thus required. At the peripheries, the play of red bricks opens up the space towards the circulations and shared terraces. At the extremes facing the new buildings, collective equipments take place, unifying the whole area.

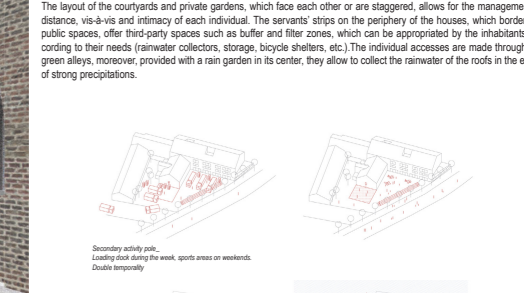
(Re)activate



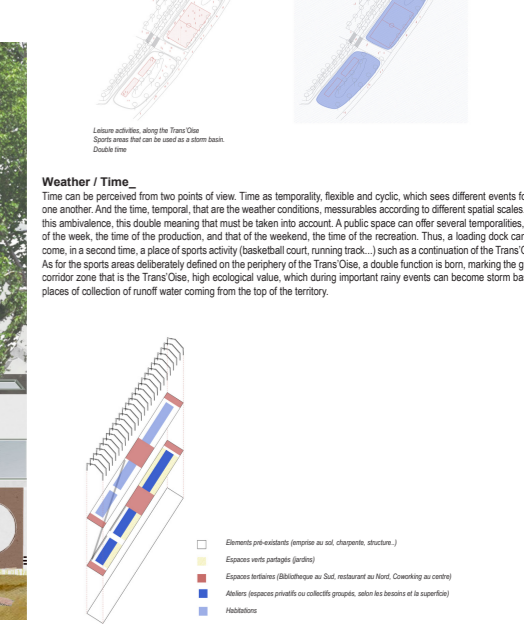
Flexible Habitat.
The morphological and structural structure of grouped housing responds to the need for flexibility that today's living spaces require. Thanks to the notion of hybridity, these dwellings can be perceived as an ecosystem in its own right, transformable and evolving according to generational and cyclical needs. This means fighting against social decay and disruption.



In-between.
The layout of the courtyards and private gardens, which face each other or are staggered, allows for the management of distance, vis-à-vis and intimacy of each individual. The servants' strips on the periphery of the houses, which border the public spaces, offer third-party spaces such as buffer and filter zones, which can be appropriated by the inhabitants according to their needs (rainwater collectors, storage, bicycle shelters, etc.). The individual accesses are made through the green alleys, moreover, provided with a rain garden in its center, they allow to collect the rainwater of the roofs in the event of strong precipitations.



Weather / Time.
Time can be perceived from two points of view. Time as temporality, flexible and cyclic, which sees different events follow one another. And the time, temporal, that are the weather conditions, measurable according to different spatial scales. It is the ambivalence, the double meaning that must be taken into account. A public space can offer several temporalities, that of the week, the time of the production, and that of the weekend, the time of the recreation. Thus, a loading dock can become, in a second time, a place of sports activity (basketball court, running track...) such as a continuation of the Thieran One. As for the sports areas (delimited) defined on the periphery of the Thieran One, a double function is born, marking the green corridor zone that is the Thieran One. High ecological value, which during important rainy events can become storm basins, places of collection of runoff water coming from the top of the territory.



Reappropriation.
Reappropriation favors recycling and hybridization skills. It allows to keep the memory of a place to transform it into productive use. Of this old language is preserved the structure and the footprint. It becomes a common good, a space of resources for new places of exchange. If these formal and structural elements are reappropriated, it is the entire former industrial infrastructure that is now accessible to the public. It now houses workshop and meeting spaces, public facilities (library, restaurants, coworking and housing). It is the mix that symbolizes the reactivation of Auneuil.