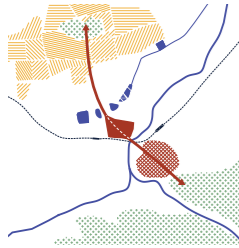


### Connective Landscapes

Reactivate the vision of a community-oriented garden city as a green, porous neighborhood in a walking city, with a self-governing community and agricultural activity that connects people.

#### A walking City



- Building up a walkable city path network by
  - Closing unnecessary car road connections
  - Slow down car traffic
  - encourage walking and cycling with better infrastructure and information campaigns
  - Strengthen and extend shared mobility services
  - Open up gates and fences of public space (i.e. at Zaunweise
  - Free up land for landscaping
  - City boys lead with right of preemption / gives incentives for ensuring passageway)

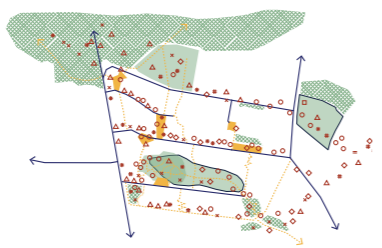
#### Neighborhood Club



With the help of the GWW and the city, the local community could set up a Neighborhood Club to establish forms of local self-governance. The City and GWW would have to define a contact person, create an internal and external communication strategy with the community and local stakeholders, allocate and adapt funds and spaces in the site and the new building accordingly.

The Neighborhood Club foundation and establishment would have to be community based, its roles, articles of association (i.e. Statute), tasks, spaces, communication are rooted in the ideas of the old and new residents of the Galgenberg neighborhood, but it is circle around the 4 topics of gardening and agriculture, community, shared mobility and intergenerational cooperation.

#### United Gardens



\*To strengthen an active community we propose to:
 

- introduce activity with public community furniture
- Enlarge and enrich streetscapes
- Temporary use of underutilized spaces for common agricultural activity by the Neighborhood Club
- Shared spaces in the new buildings
- Funds for the Neighborhood Club to start a system of sharing mobility, tools, amenities, crops and helping hands
- To develop an interconnected ecosystem and a diverse flora and fauna we propose:
  - An ecosystem refuge on parts of the Galgenberg
  - Development of underutilized spaces for community based agriculture
  - Potential green space management through the Neighborhood Club
  - Pathways and resting spots to contemplate nature and viewpoints
  - Local fruit trees to form an edible city and an urban Garden Eden

#### Already a Hut Summer



The neighborhood is full of huts. They came as boxes, garages, sheds... They are bought, built, inherited, unseen by architects and legal planning processes. Inside and full of activity and functional recycling. They work as an extension to homes, as hobby rooms, a storage, etc. and activate their spatial surrounding.

The easy construction, disconnection, and functional flexibility is a great potential. While most huts seem to be privatized for individual or nuclear family use, a new full generation can further develop the neighborhood's social life and its multifaceted activity.

#### New Neighborhood Central



Site P1 will be a meeting place for residents of all ages and people from the neighborhood. They can join a community based on agriculture, community, logistics and mobility with local agriculture and garden knowledge and activity and therefore the building into a healthy neighborhood community.

Its implementation at the northern side of the plot will set the benchmarks for the future urban densification of the southern quarter, to become an urban mixed-use development that enhance the existing facilities (kindergarten) found on the site with a green buffer to the train tracks. Its activated by the following:
 

- Co-working room / shared office as an extension to the house
- guest room for tourists, friends and relative, storage, community rooms

#### Garden am Südhang



Site P2 will be a contemplative community garden that makes use of its wonderful orientation with great views. It connects local, especially older residents with the kindergarten, looks with local agriculture and garden knowledge and activity and therefore the building into a healthy neighborhood community.

Its implementation at the northern side of the plot will set the benchmarks for the future urban densification of the southern quarter, to become an urban mixed-use development that enhance the existing facilities (kindergarten) found on the site with a green buffer to the train tracks. Its activated by the following:
 

- Local agricultural production stimulates community, and local, transport free food production
- Solar panels produce energy for local value creation and district heating improves local energy efficiency.

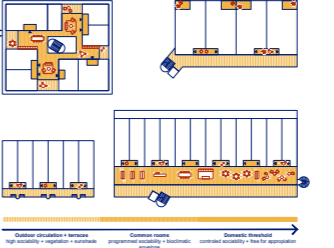
#### Sharing economic cycles



A wide functional and structural diversity of buildings, public space, social institutions, just like a local circular economy, value creation and helping hands shall be stimulated by:
 

- Justifications of apartments for elderly with the kindergarten, family apartments, community spaces, agricultural gardens that stimulate the involvement of the old into community, activity and local economy
- View yards, the community can more easily take care of elders
- Local agricultural production stimulates community, and local, transport free food production
- Solar panels produce energy for local value creation and district heating improves local energy efficiency.

#### Inside - Outside

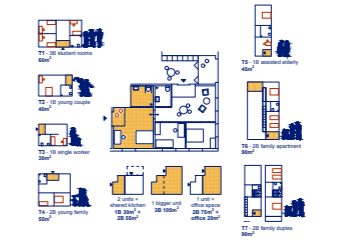


Circulation areas are enlarged, functionally enriched and leave empty spots for functional appropriation, spontaneous meetings and acts as a community activator. Planting beds induce a first community activity and improve well-being. They are created towards the interior of the cluster, enhancing the visual connections and interactions among the residents.

3 degrees of sociability are defined with different bioclimatic conditions:
 

- Outdoor circulation and terraces
- Common living rooms
- Domestic thresholds

#### Residential Units and Cluster Living



A catalogue of different apartment typologies respond to different needs and can respond to various changes. The apartment type juxtaposition creates a diverse community of tenants: classical nuclear families, elderly, youngsters, single parents and patch-work families, shared house communities, temporary guests, refugees, apprentices, students, founders and business travelers.

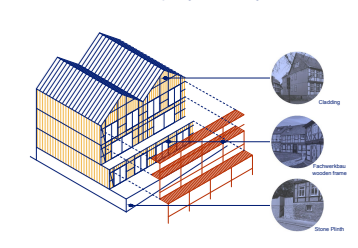
The combination of different apartments and flexible rooms can help to live through the change of different phases of life in an economical spatial and social surrounding. A couple moves in. They get a child, use an attached small apartment as an extension, to rent at night, to work, etc. In the teenage times, the kids move to the extended room, still close by, but far enough for some autonomy. Maybe later, the parents need less space and the grown up child gets a partner, so the swap of apartments happens again and the story begins all over again.

#### Soft Dwelling

The architecture will offer:
 

- Circulation areas that foster active community life.
- A combination of apartments correspond to changing lifestyles.
- A locally sourced structural logic ensures economic viability, sustainable construction and develops vernacularity.

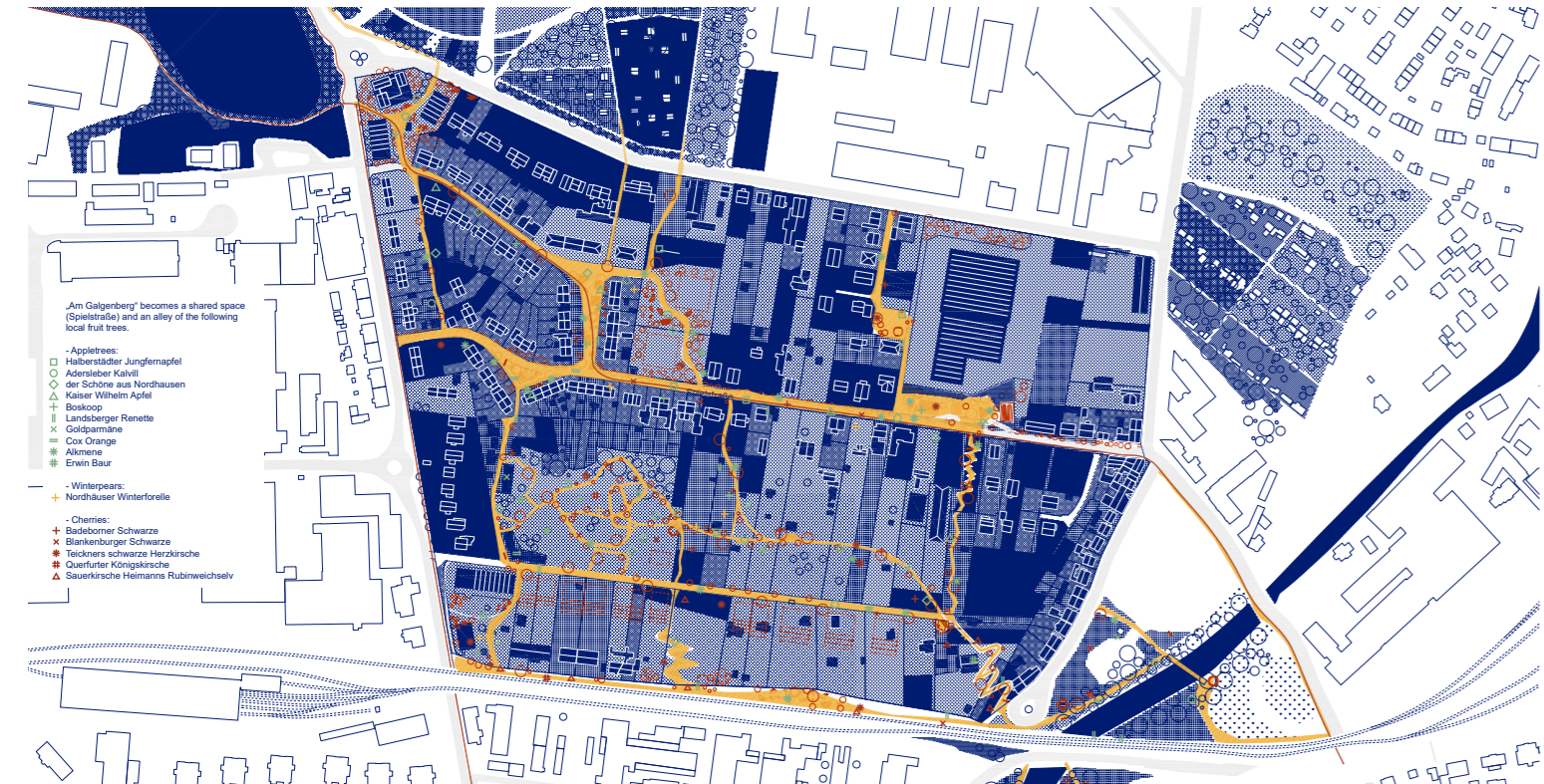
#### Wernigerode weiter bauen



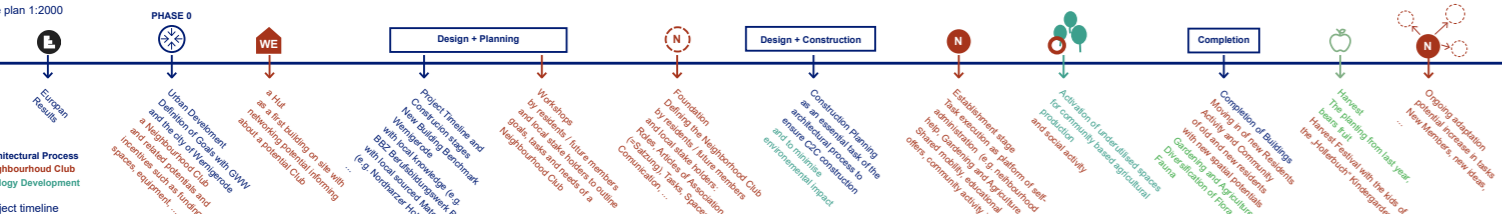
The building follows a contemporary and sustainable constructive logic of elements that are rooted in the vernacular architectural history of Wernigerode. The stone podium is a long-standing humidity resistant foundation of the building already found in old buildings from Wernigerode downtown.

A wooden structural skeleton, that uses local material from the Harz, maintains vernacular architecture (Fachwerkbau), allows easy future adaptations and construction recycling, while reducing the CO2 footprint.

Cladding closes off more private facade types, protects construction from atmospheric conditions and introverted spaces from views and sounds.



- Am Galgenberg becomes a shared space (Spielplatz) and an alley of the following local fruit trees:
- Apfelweiss: Halberstädter Jungfernapfel
  - Adelweiss: Kahlst. Apfel
  - Kaiser Wilhelm Apfel
  - Bockapfel
  - Landbörger Sternapfel
  - Goldapfel
  - Das Orange
  - Altkönig
  - Erwin Baur
- Wintergarten: Nordhäuser Winterapfel
- Chemos:
  - Badelkorn Schwarze
  - Badelkorn Schwarze
  - Tischkorn schwarze Herzkirsche
  - Quadriflor Kirschkirsche
  - Sauerkirche Hermann Rubinwachtel

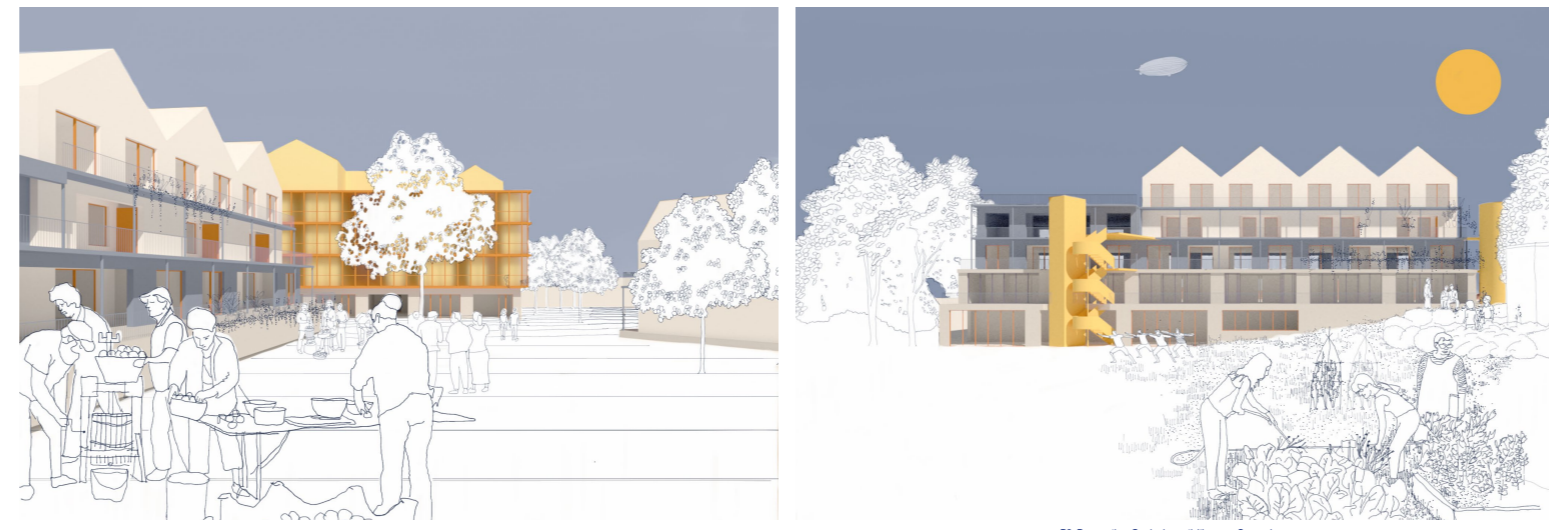
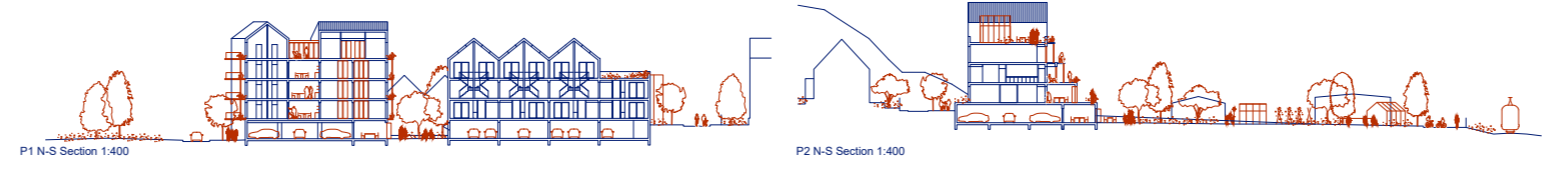


Site panorama



P1 Axonometric 1:400

P2 Axonometric 1:400



P1 Apfelweiss in the yard

P2 Perspective, Gardening activities on a Sunny day



P1 - We building, Flexible shared spaces hosting unexpected events.

P1 - Veckenstedter Rücken, Sharing domestic habits

P1 - Garden city families, Living thresholds

P2 - Südkönig Brückenblick, Piano lessons during the morning