

Domestic Machines

[PAGE No. 1] 1/3

Techno-Rural
TOWARDS A GARDEN CITY 4.0
During the last decades our contemporary societies have experienced an increasing information exchange and the apparently urban and the apparently domestic. Defining their borders, finding a blurred condition that could be understood as Urban Domesticity.

Urban Domesticity has arisen as a fluid model for contemporary metropolitan conditions. Emerging from the tension between the urban and the domestic. Whenever domestic situations invade the urban sphere, and currently even more commonly, when urban situations are developed within our domestic space.

The ongoing "Spacial Typology" has manifested the information exchange between those traditionally hermetic spaces even more, when projects that conventional typologies have excluded have been included in the boundaries of our buildings and cities.

This project pretends to rethink the traditional Garden town and update it into our contemporary paradigm. It upgrades the model of the Garden City into the "Techno-Rural City", which opens up a new paradigm in which rural and urban are not anymore oppositely, but different temporal states of the same context. Now are the private and the public, the individual and the community work life.

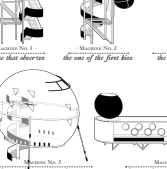
Consequently single family homes or collective housing are not anymore opposed realms. They are not anymore irreconcilable situations. Through two different types of formalization, some architectural strategy allows for the creation of a new type of domesticity where independence and community are no longer incompatible, but rather exist in the same architecture, within the two models proposed for the sites.

Concerning Machines
They are actropes of Urban Domesticity. They expand the phases of the home out of the well-framed boundaries of the traditional house - the conventional apartment. They allow to extract features of domesticity into the urban realm, generating a Urban Domesticity that is local community.

These "Social Micro-Condensers" are not isolated islands of domestic programs among the urban context, but a real network of interconnected elements and components, each with providing the necessary public features for the community. They act as an "Etiploidal Social Condenser" for the local community, creating not just the architecture that shelter certain domestic uses but also providing the tools and mechanisms to develop such an expansion of the conventional home into the urban space.

They operate at two scales neighborhood scale (study site and block scale [project scale]).

Social Micro-Condensers
ACTIVATORS OF URBAN DOMESTICITY



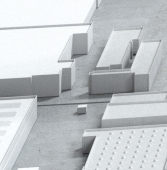
At the site scale it's primarily the externalization of certain types of machines that generates the new domesticity, and not to reach the most voluminous design of the space. Domesticity is here defined from infrastructure.

Domestic Artifacts
INFRASTRUCTURES OF THE DETAILS



Whereas all the technical equipment is user-designed, what remains un-programmed is primarily the living space, keeping it open for the user's appropriation.

Two Scales of Architectural Artifacts
THEIR COMBINATION PRODUCES THE DOMESTIC MACHINES



They are articulators of Urban Domesticity. They expand the phases of the home out of the well-framed boundaries of the traditional house - the conventional apartment. They allow to extract features of domesticity into the urban realm, generating a Urban Domesticity that is local community.

These "Social Micro-Condensers" are not isolated islands of domestic programs among the urban context, but a real network of interconnected elements and components, each with providing the necessary public features for the community. They act as an "Etiploidal Social Condenser" for the local community, creating not just the architecture that shelter certain domestic uses but also providing the tools and mechanisms to develop such an expansion of the conventional home into the urban space.

They operate at two scales neighborhood scale (study site and block scale [project scale]).

Social Micro-Condensers
ACTIVATORS OF URBAN DOMESTICITY

At the site scale it's primarily the externalization of certain types of machines that generates the new domesticity, and not to reach the most voluminous design of the space. Domesticity is here defined from infrastructure.

Domestic Artifacts
INFRASTRUCTURES OF THE DETAILS

Whereas all the technical equipment is user-designed, what remains un-programmed is primarily the living space, keeping it open for the user's appropriation.

Domestic Machines

[PAGE No. 2] 2/3

an X-ray of our Societies
Our cities defined from the space where we live in. Both domestic and urban realm are the spatialization of our societies of their citizens' lives and of their social behavior.

This proposal establishes a series of different Typologies of apartments that correspond to different modes of users and groups of users. Each Typology materializes social features by means of architectural conditions: double floor, variable entrance for independence, common spaces for socializing and sharing, hallways that become circulation, kitchens that behave as living rooms, etc. Those architectural conditions have been arranged in various combinations in order to achieve a contemporary, complex and real model for our societies requirements. And also for the upcoming needs, for those favorable situations that cannot be produced but for which we can provide tools for adaptation.

For that purpose, we have worked with Models of users. Both these Models of Users and the Architectural Typology that corresponds them are not just defined in terms of quantities (number of users, size, range, square meters, number of specific rooms, services, etc) but in terms of conditions and qualities that define them as citizens of our society. For example, such a Qualification of our Users would establish different models according to the grade labor stability, to the grade of compromise of a partnership, the grade of independence within a family, or even to the possibility of growth or shrink of a family. The qualities of these groups of users are the ones that construct the daily bases that establish the rules for the definition of our urban domestic realms.

the Carpet
FROM DEPRESSION TO COGNITION

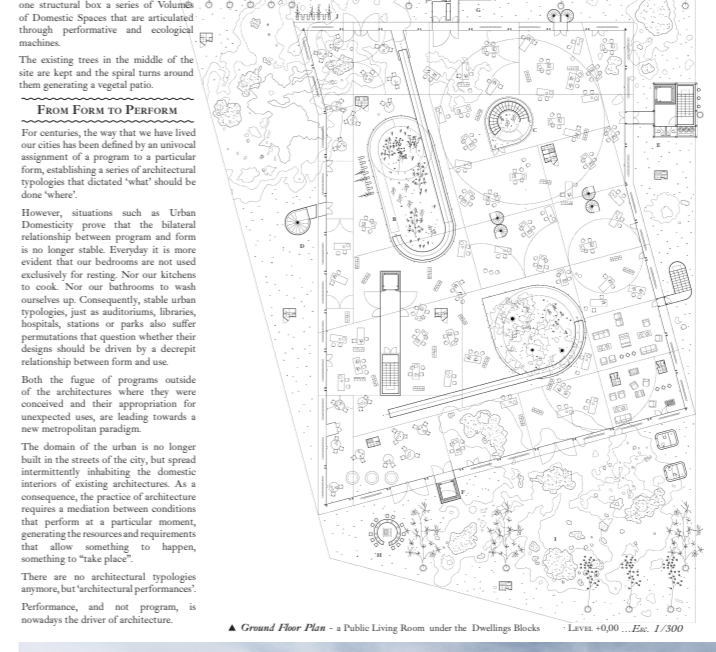
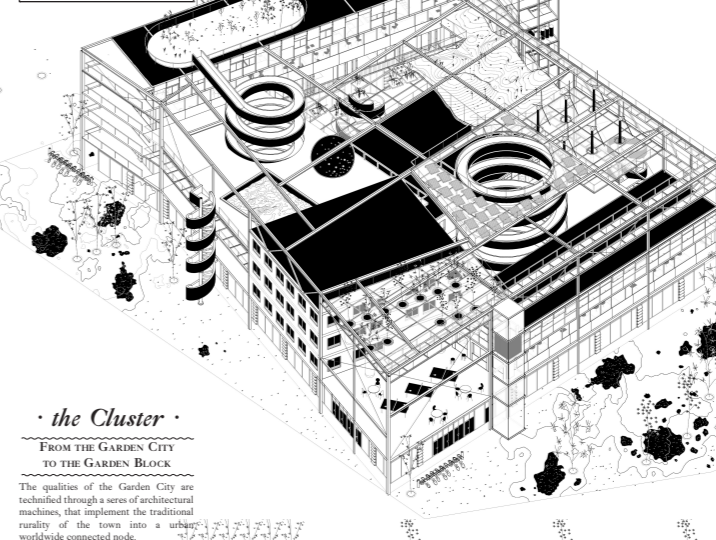
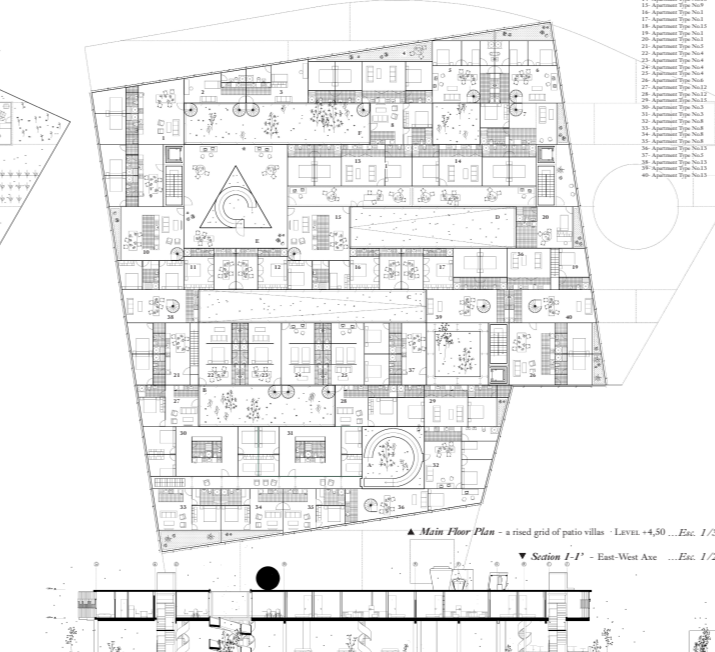
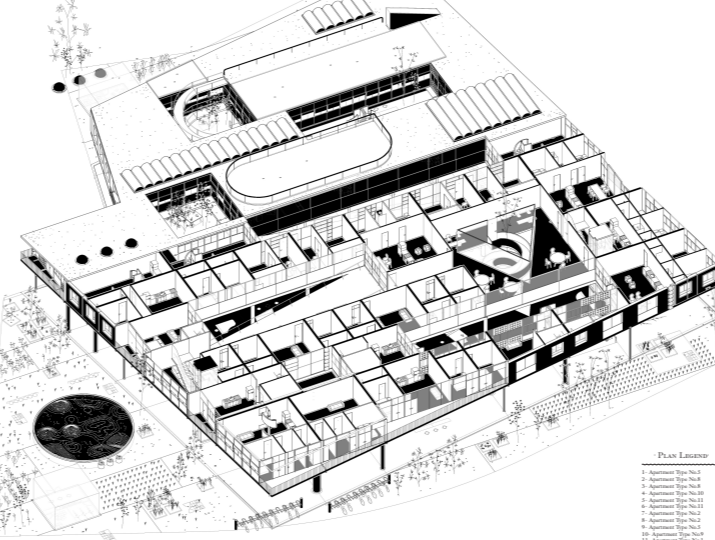
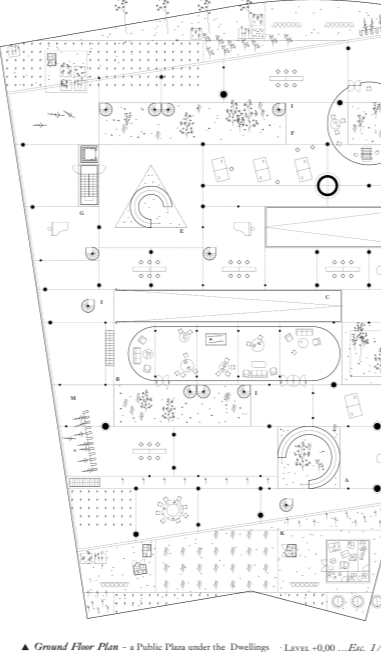
It solves this dichotomy through a very basic architectural operation: whereas the traditional semi-rural villa of the garden city works in plan (a patio or garden is confining a house the carpet villa works in section (the garden does not confine the house anymore, but it's the house that is elevated over a commonly shared patio that extends its public ethos to the site and neighborhood).

Home vs. Labor vs. Leisure
In the contemporary city, Home and Labor are not anymore opposed realms but merged realities. They are just radicalized terms of a much more blurred reality. Work has been merged with domestic activities as well as domesticity has been released from the home in order to take place within labor spaces.

That primary division of labor space and domestic space that sustained the triumph of modernity during the last century has been dismantled by the subsequent release of the personal computer, the world wide web and the smartphone, among others. The technologies that those devices and systems involve have constructed a change in the medium by which publicness is constructed in the contemporary society.

While work and home have been opposite spheres in the modern life, in the contemporary city, digital technologies have generated a medium that constantly mediates between both, establishing much more complex situations and conditions where new publicness is achieved and performed.

Labor is not anymore developed uniquely within work spaces. As a consequence, domesticity is not anymore solely rendered within the home, nor urbanism is exclusively developed in the streets. Both of them have occupied the restricted boundaries that Modernity gave them in order to define a whole series of in-between spaces that are shaping the economical, political and cultural spheres of our societies.



the Cluster

FROM THE GARDEN CITY TO THE GARDEN BLOCK

The qualities of the Garden City are tackled through a series of architectural machines, that implement the traditional reality of the town into a new worldwide connected node.

This second typology gathers within one structural box a series of Variants of Domestic Spaces that are articulated through performative and ecological machines.

The existing trees in the middle of the site are kept and the spiral turns around them generating a vegetal patio.

FROM FORM TO PROGRAM

Four contexts, the way we have lived our cities has been defined by an unvoiced assignment of a program to a particular form, establishing a series of architectural typologies that dictated "what should be done where".

However, situations such as Urban Domesticity prove that the bilateral relationship between program and form is no longer stable. Everyday it is more evident that our bedrooms are not used exclusively for resting. Nor our kitchens to cook. Nor our bathrooms to wash ourselves up. Consequently, stable urban typologies, just as multiforms, libraries, hospitals, stations or parks also suffer permutations that question whether their design should be driven by a descript relationship between form and use.

Both the figure of programs outside of the architecture where they were conceived and their appropriation for unexpected uses, are leading towards a new metropolitan paradigm.

The domain of the urban is no longer built in the streets of the city, but spread internationally inhabiting the domestic interior of existing architectures. As a consequence, the practice of architecture requires a mediation between conditions that perform at a particular moment, generating the necessary and requirements that allow something to happen, something to "take place".

There is an architectural typology anymore, but "architectural performance", performance, and not program, is nowadays the driver of architecture.

Domestic Machines

[PAGE No. 3] 3/3

