

El proyecto se propone como la continuación contemporánea del caserío tradicional vasco, cuyos códigos del pasado y valores comunitarios que afloraban una identidad rural sólida se ven revitalizados por la incursión de la tecnología en todos los niveles de nuestra vida, las cuales han diluido los espacios productivos en la domesticidad de la casa y potenciado las redes de colaboración ciudadana. No solo sirven de referencia la honestidad constructiva y la respetuosa actitud del medio natural del caserío tradicional, sino también la autogestión participativa de los espacios comunitarios y los lazos vecinales que se generan en torno a las nuevas actividades productivas del espacio doméstico.

The project is proposed as the contemporary continuation of the traditional Basque farmhouse, whose codes of the past and community values that emerged a solid rural identity are revitalized by the incursion of technology at all levels of our life, which have diluted productive spaces in the domesticity of the home and enhanced citizen collaboration networks. Not only constructive honesty and respectful reading of the natural environment of the traditional farmhouse serve as references, but also the participatory self-management of community spaces and neighborhood ties that in general around the new productive activities of the domestic space.

La parcela se caracteriza por una topografía con una pendiente muy acusada, por lo que toma la curva de nivel +502.0m como referencia para la instalación de una serie de módulos prefabricados apoyados puntualmente. Se libera al máximo terreno natural posible y se permite la adaptación independiente de cada módulo a su pendiente. Además, se proyecta un núcleo de comunicación accesible que conecta las distintas cotas clave del entorno sin la necesidad de grandes operaciones topográficas.

Adaptation to the terrain
The site's strong slope is one of the main characteristics of the plot. In this sense, the +502.0m contour line is chosen as a reference for the settlement of a series of prefabricated modules that occasionally have contact with the ground. This way, a maximum ground surface is relieved and each module is able to adapt to their corresponding slope. In addition, a communication core is implemented, connecting the main heights of the context. With this intervention we achieve a type of architecture that is intimately connected with Beizama's core without the need for great topographic operations.

2.2. Construcción prefabricada
Prefabricated construction

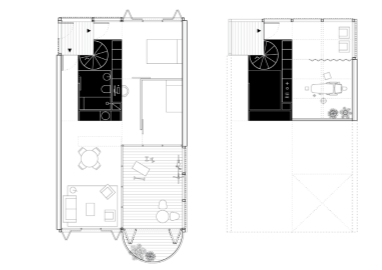
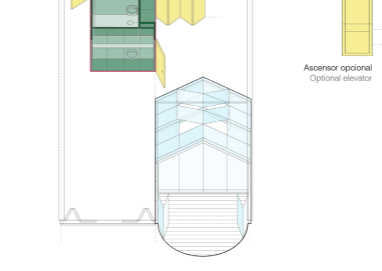
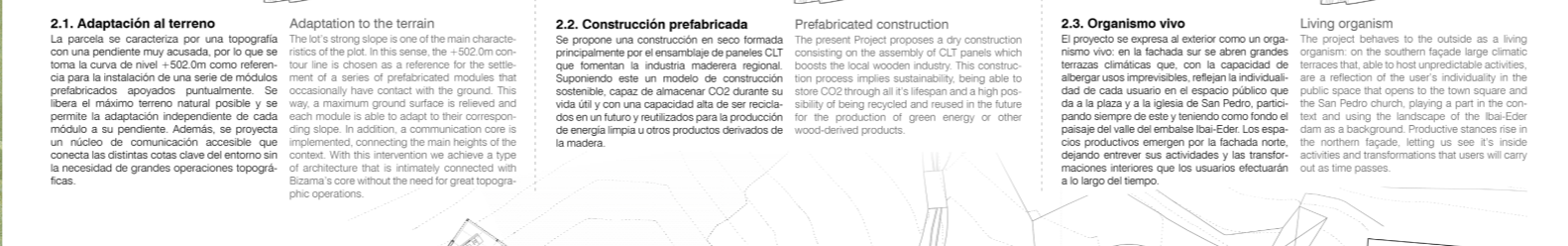
Se propone una construcción en seco formada principalmente por el ensamblaje de paneles CLT que tornan la industria maderera regional. Suponiendo este un modelo de construcción sostenible, capaz de almacenar CO2 durante su vida útil y con una capacidad alta de ser reciclado en un futuro y reutilizado para la producción de energía limpia u otros productos derivados de la madera.

The present project proposes a dry construction consisting on the assembly of CLT panels which boosts the local wooden industry. This construction process implies sustainability, being able to store CO2 through all it's lifespan and a high possibility of being recycled and reused in the future for the production of green energy or other wood-derived products.

2.3. Organismo vivo
Living organism

El proyecto se expresa al exterior como un organismo vivo en la fachada sur se abren grandes terrazas climáticas que, con la capacidad de albergar usos imprevisibles, reflejan la individualidad de cada usuario en el espacio público que da a la plaza y a la iglesia de San Pedro, participando siempre de este y teniendo como fondo el paisaje del valle del embalse Beizama-Eder. Los espacios productivos emergen por la fachada norte, dejando entretener sus actividades y las transformaciones interiores que los usuarios efectúan a lo largo del tiempo.

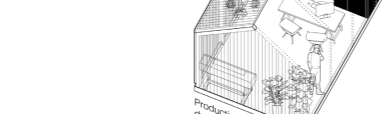
The project behaves to the outside as a living organism, on the southern facade large climatic terraces that, able to host unpredictable activities, are a reflection of the user's individuality in the public space that opens to the town square and the San Pedro church, playing a part in the context and using the landscape of the Beizama dam as a background. Productive spaces rise in the northern facade, letting us see it's made activities and transformations that users will carry out as time passes.



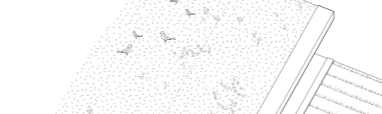
Plantas	0m	2	6	10
Public areas				
Natural open space	2.151m ²			
Open space	480m ²			
Public facilities	230m ²			
Housing units				
5 units type A	350m ²			
7 units type B	308m ²			
12 productive private areas	305m ²			
5 communication core	75m ²			
12 car parking lots	138m ²			
Total lot area	1.314m ²			
Total sector area	3.284m ²			



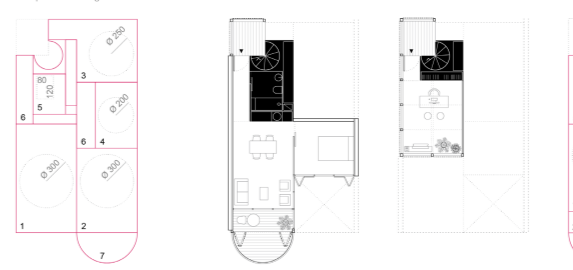
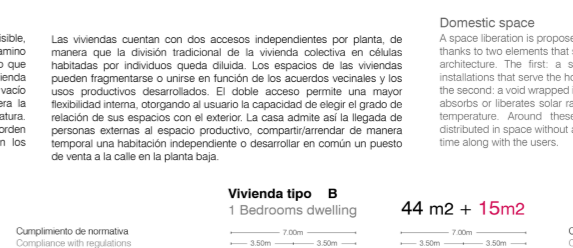
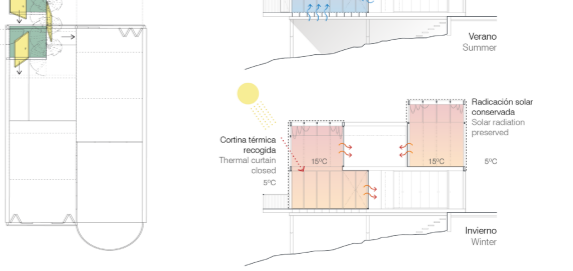
Plantas	0m	1	4
Public areas			
Natural open space	2.151m ²		
Open space	480m ²		
Public facilities	230m ²		
Housing units			
5 units type A	350m ²		
7 units type B	308m ²		
12 productive private areas	305m ²		
5 communication core	75m ²		
12 car parking lots	138m ²		
Total lot area	1.314m ²		
Total sector area	3.284m ²		



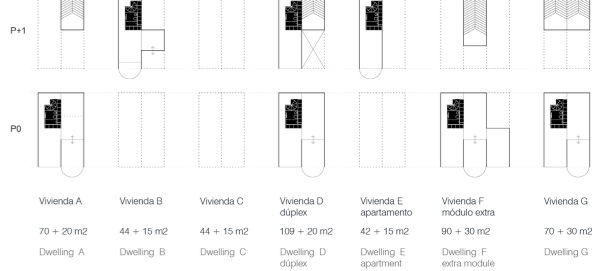
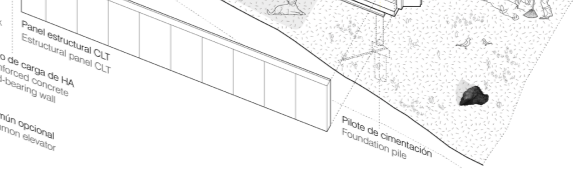
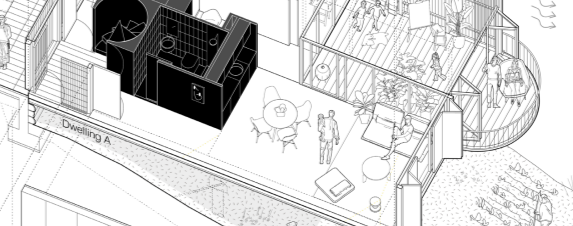
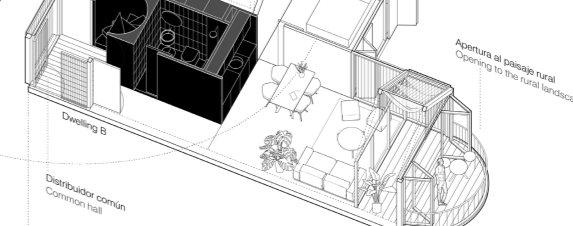
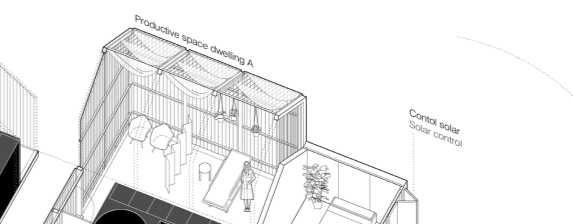
Plantas	0m	1	4
Public areas			
Natural open space	2.151m ²		
Open space	480m ²		
Public facilities	230m ²		
Housing units			
5 units type A	350m ²		
7 units type B	308m ²		
12 productive private areas	305m ²		
5 communication core	75m ²		
12 car parking lots	138m ²		
Total lot area	1.314m ²		
Total sector area	3.284m ²		



Plantas	0m	1	4
Public areas			
Natural open space	2.151m ²		
Open space	480m ²		
Public facilities	230m ²		
Housing units			
5 units type A	350m ²		
7 units type B	308m ²		
12 productive private areas	305m ²		
5 communication core	75m ²		
12 car parking lots	138m ²		
Total lot area	1.314m ²		
Total sector area	3.284m ²		



Plantas	0m	1	4
Public areas			
Natural open space	2.151m ²		
Open space	480m ²		
Public facilities	230m ²		
Housing units			
5 units type A	350m ²		
7 units type B	308m ²		
12 productive private areas	305m ²		
5 communication core	75m ²		
12 car parking lots	138m ²		
Total lot area	1.314m ²		
Total sector area	3.284m ²		



Plantas	0m	1	4
Public areas			
Natural open space	2.151m ²		
Open space	480m ²		
Public facilities	230m ²		
Housing units			
5 units type A	350m ²		
7 units type B	308m ²		
12 productive private areas	305m ²		
5 communication core	75m ²		
12 car parking lots	138m ²		
Total lot area	1.314m ²		
Total sector area	3.284m ²		

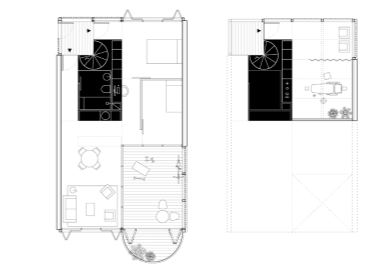


3.1. Espacio doméstico
Domestic space

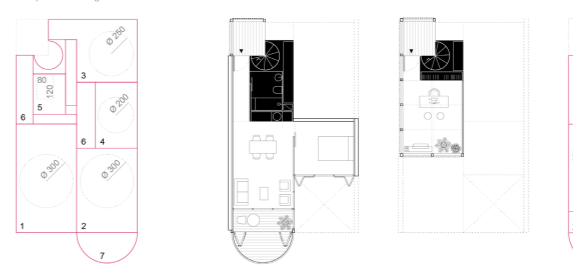
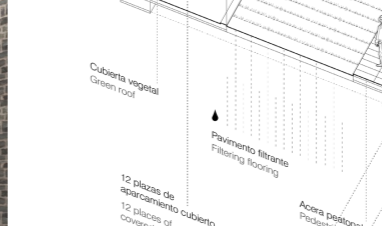
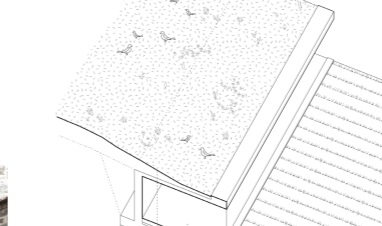
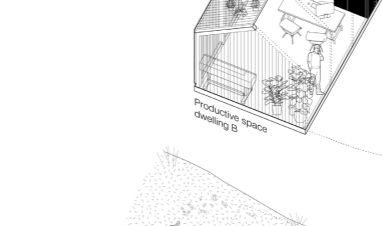
A space liberation is proposed, where the unpredictable a dominant, ready that shifts to two elements that shifts halfway between a piece of furniture and architecture. The first a solid volume that unites the stairs and the installations that serve the kitchen, the second a void wrapped in a translucent skin rises in double-height, allowing the user the capability to choose the level of relation to the outside. The house permits the arrival of people from outside the productive space, temporarily sharing/entering an independent room or collectively developing a shop or stand on the ground floor.

The house permits the arrival of people from outside the productive space, temporarily sharing/entering an independent room or collectively developing a shop or stand on the ground floor.

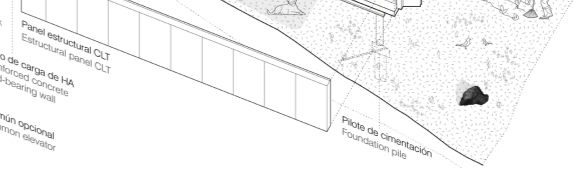
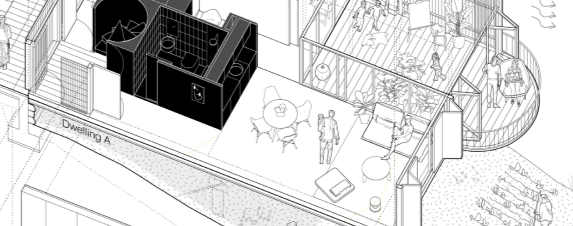
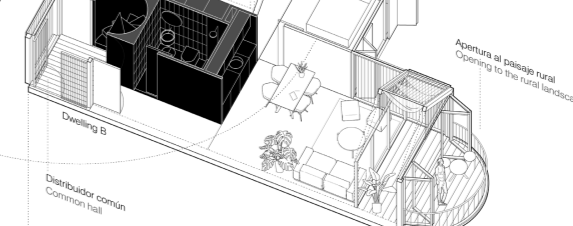
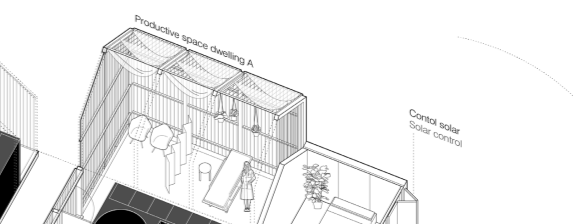
The house permits the arrival of people from outside the productive space, temporarily sharing/entering an independent room or collectively developing a shop or stand on the ground floor.



Plantas	0m	1	4
Public areas			
Natural open space	2.151m ²		
Open space	480m ²		
Public facilities	230m ²		
Housing units			
5 units type A	350m ²		
7 units type B	308m ²		
12 productive private areas	305m ²		
5 communication core	75m ²		
12 car parking lots	138m ²		
Total lot area	1.314m ²		
Total sector area	3.284m ²		



Plantas	0m	1	4
Public areas			
Natural open space	2.151m ²		
Open space	480m ²		
Public facilities	230m ²		
Housing units			
5 units type A	350m ²		
7 units type B	308m ²		
12 productive private areas	305m ²		
5 communication core	75m ²		
12 car parking lots	138m ²		
Total lot area	1.314m ²		
Total sector area	3.284m ²		



Plantas	0m	1	4
Public areas			
Natural open space	2.151m ²		
Open space	480m ²		
Public facilities	230m ²		
Housing units			
5 units type A	350m ²		
7 units type B	308m ²		
12 productive private areas	305m ²		
5 communication core	75m ²		
12 car parking lots	138m ²		
Total lot area	1.314m ²		
Total sector area	3.284m ²		

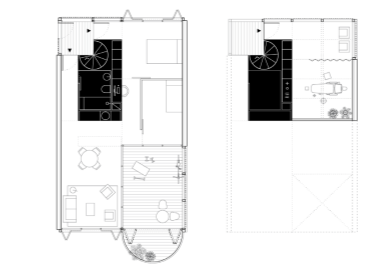


3.1. Espacio doméstico
Domestic space

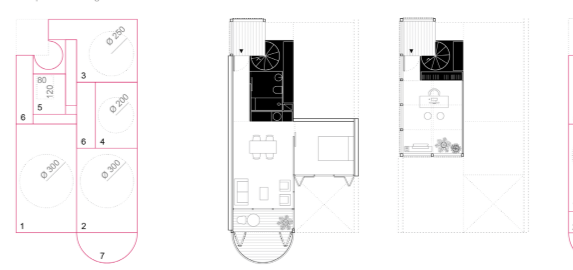
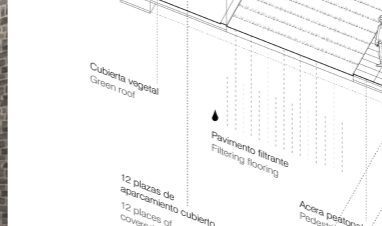
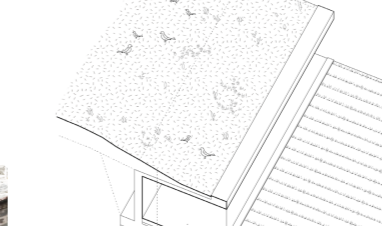
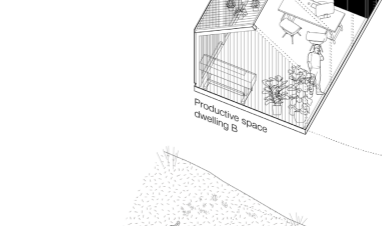
A space liberation is proposed, where the unpredictable a dominant, ready that shifts to two elements that shifts halfway between a piece of furniture and architecture. The first a solid volume that unites the stairs and the installations that serve the kitchen, the second a void wrapped in a translucent skin rises in double-height, allowing the user the capability to choose the level of relation to the outside. The house permits the arrival of people from outside the productive space, temporarily sharing/entering an independent room or collectively developing a shop or stand on the ground floor.

The house permits the arrival of people from outside the productive space, temporarily sharing/entering an independent room or collectively developing a shop or stand on the ground floor.

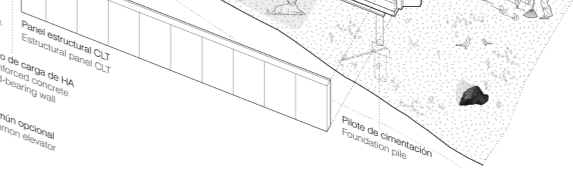
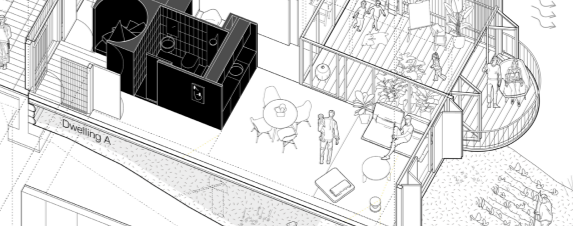
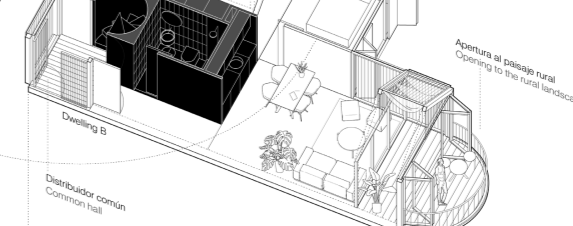
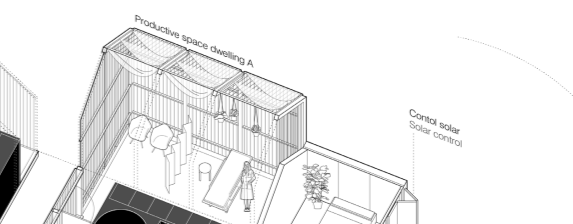
The house permits the arrival of people from outside the productive space, temporarily sharing/entering an independent room or collectively developing a shop or stand on the ground floor.



Plantas	0m	1	4
Public areas			
Natural open space	2.151m ²		
Open space	480m ²		
Public facilities	230m ²		
Housing units			
5 units type A	350m ²		
7 units type B	308m ²		
12 productive private areas	305m ²		
5 communication core	75m ²		
12 car parking lots	138m ²		
Total lot area	1.314m ²		
Total sector area	3.284m ²		



Plantas	0m	1	4
Public areas			
Natural open space	2.151m ²		
Open space	480m ²		
Public facilities	230m ²		
Housing units			
5 units type A	350m ²		
7 units type B	308m ²		
12 productive private areas	305m ²		
5 communication core	75m ²		
12 car parking lots	138m ²		
Total lot area	1.314m ²		
Total sector area	3.284m ²		



Plantas	0m	1	4
Public areas			
Natural open space	2.151m ²		
Open space	480m ²		
Public facilities	230m ²		
Housing units			
5 units type A	350m ²		
7 units type B	308m ²		
12 productive private areas	305m ²		
5 communication core	75m ²		
12 car parking lots	138m ²		
Total lot area	1.314m ²		
Total sector area	3.284m ²		