

MAKING SPACE

SHOWING SOME GRACE, AND LEAVING BE / CREATING BOUNTIFUL GROUNDS / HAVING A LIGHT STEP / FILLING A LARGE SPACE / THIS IS NOT REALLY FOR YOU / VIEWS



SHOWING SOME GRACE AND LEAVING BE / THIS IS AN EFFORT TO CARE FOR OLD INDUSTRY AND DIRTY EARTH — AND TO DISPLAY THE SPECTACLE OF THE MASSIVE WORK THAT IS NEEDED TO REHABILITATE THE PLACES WE SO DILIGENTLY HAVE GROUNDED DOWN. OUR SUGGESTIONS ARE IN ONE SENSE SIMPLE—A CLEANSING MARSHLAND WITH A NARROW RED BRIDGE, A FLOATING GARDEN, NURSERIES FOR THE PLANTS OF FUTURE PARKS, AND THREE PAVILIONS PROVIDING MODEST VIEWS, ROOFS, AND TOILETS FOR

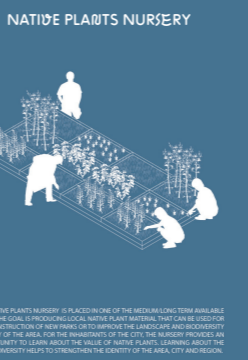
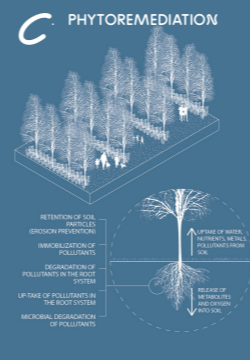
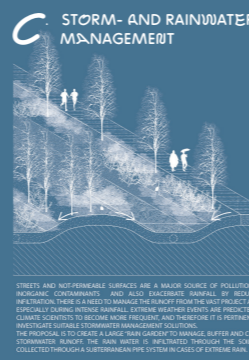
THE NON-NON-HUMANS. THE HARBOUR SITE WE'VE BEEN GIVEN IS LIKE MOST SITES THESE DAYS A PATCHWORK QUILT OF SPACE LEFT OVER FROM PLANNING FOR HUMANS, PRODUCING STRANGE CORRIDORS AND APPENDIXES. SO WHAT BETTER WAY IS THERE TO PLAN FOR IT THAN MAKING SPACE FOR SOMETHING OTHER THAN US? REFUSING THE SITE AND RE-FUSING IT. SHOWING SOME GRACE AND LEAVING BE. BUT NOT BEFORE WE'VE PICKED UP OUR OWN TRASH; SO THAT MAYBE WE'LL BE WELCOMED BACK SOMETIME IN THE FUTURE.



CREATING BOUNTIFUL GROUNDS / THERE ARE MANY WAYS TO CLEAN UP TOXIC SOIL, BUT COMBINED WITH THE SITE'S NEED FOR GREY WATER MANAGEMENT PHYTOREMEDIATION CROPS UP BY CREATING A MARSHLAND TOXIC COMPOUNDS CAN BE ABSORBED AND BROKEN DOWN BY THE PLANTS WITHOUT THE NEED FOR LANDFILLS. DEPENDING ON THE DEGREE OF TOXICITY THERE ARE DIFFERENT SUITABLE APPROACHES — FOR EXAMPLE A COMBINATION OF POPLARS AND SUNFLOWERS FOR HEAVILY POLLUTED EARTH, OR BIRCH AND WILD ROSES FOR THE CLEANER. FURTHER, IT SERVES AS A WISTFUL PHYSICAL REMINDER OF THE WORK THAT IS

NEEDED TO MAINTAIN US. OUR WASTE DOESN'T JUST DISAPPEAR AND THE WATER DOESN'T JUST GO DOWN THE DRAIN. WHEN THE WOUNDS HAVE HEALED MAYBE THE MARSHLAND CAN STAY, RETAINING SOME OF THAT STRANGE MYSTICISM INDUSTRY AND NATURE SHARE IN THAT THEY ARE REALLY NOT MADE FOR US? HAVING A LIGHT STEP / A FEW METERS ABOVE THE MARSH RUNS A NARROW FALU-RED BRIDGE RESTING ON DIRT MOUNDS. IT CONNECTS THREE CRUCIAL PARTS OF THE SITE — THE TUNNEL BELOW THE TRACKS, THE BRIDGE ABOVE THE TRACKS AND THE FAR SOUTH SIDE. A SLIVER OF ACCESSIBILITY FOR US.

FILLING A LARGE SPACE / IT'S TOUGH TO TRAVEL FAR WHEN YOU'RE USED TO STAYING IN ONE PLACE. SO SPREAD THROUGHOUT THE SITE ARE NURSERIES FOR TREES AND PLANTS. SOME SPACIOUSLY PLACED AND SOME FORMING THEIR OWN KIND OF JUVENILE PARKS. FAR TO THE WEST, ON THE NORTH SIDE OF THE TRACKS WE HAVE THE MOST SHORT LIVED COMMUNITY, PACKED WITH THE QUICKEST GROWING SEEDLINGS AND SPROUTS, SOON TO BE SENT OFF. ON THE WEST SIDE OF THE HARBOUR AND NORTH OF THE OLD FACTORY, THE GREENERY CAN TAKE ITS TIME. THEY CAN STAY UNTIL ALL ELSE IS FINISHED, OR BEYOND, MAYBE EVEN A PERMANENT PLACE FOR (A) NEW GENERATION.



STREETS AND NEIGHBOURHOODS ARE A MAJOR SOURCE OF POLLUTION (E. PARTICULATE, CO2, NOISE, AND HEAVY METALS). PHOTOREMEDIATION PLANTS CAN BE GROWN IN THE GARDENS AND USED TO FILTER TOXIC SUBSTANCES FROM THE WATER. THE PLANTS ARE COLLECTED THROUGH A SUBMERGED SYSTEM OF EXPOSED ROOTS.

PHYTOREMEDIATION PLANTS CAN BE GROWN IN THE GARDENS AND USED TO FILTER TOXIC SUBSTANCES FROM THE WATER. THE PLANTS ARE COLLECTED THROUGH A SUBMERGED SYSTEM OF EXPOSED ROOTS.

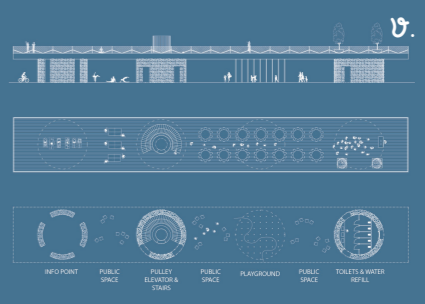
FLOATING GARDENS ARE PLACED ALONG THE WATERFRONT AS A NATURAL FILTER AND TO PROVIDE A PLACE FOR COMMUNITY AND ACTIVITIES. THEY CAN BE USED FOR A VARIETY OF PURPOSES, FROM A COMMUNITY GARDEN TO A PLACE FOR ART AND CULTURE.

AIR-POTS ARE COLLECTED IN NEIGHBOURHOODS THROUGHOUT THE CITY AND ARE USED TO GROW PLANTS THAT CAN BE USED IN THE GARDENS AND NURSERIES.

NATIVE PLANTS NURSERY IS PLACED IN ONE OF THE INDUSTRIAL AREAS AVAILABLE FOR THE LOCAL COMMUNITY. THE NURSERY IS USED TO GROW PLANTS THAT CAN BE USED IN THE GARDENS AND NURSERIES.



THIS IS NOT REALLY FOR YOU / WOVEN ALONG THE WATERFRONT FLOATS ANOTHER GARDEN. THE REEDS, SHRUBS, AND FLOWERS RESTS ON MESH PILLOWS TIED TOGETHER AND ANCHORED TO A LOWERED WOODEN DECK. AND WHILE THIS IS FOR US, TO DISTANCE OURSELVES FROM THE SILOS AND THE FACTORIES, FROM POLLUTED GROUNDS AND FUTURE BUILDING SITES, YOU ARE A VISITOR. THE FLOATING PLANTS ALSO SERVE A SIMILAR PURPOSE AS THE MARSHLANDS — TO CLEAN THE AREA THEY OCCUPY. BUT HERE THE TASK IS OVERWHELMING. CLEANING UP MÅLAREN IS NOT SOMETHING YOU DO ALONE. INSTEAD IT'S AN INVITATION FOR OTHER TO PARTICIPATE IN THIS WEAVING.



VIEWS / IN THE END THERE IS A MORE THAN ENOUGH SPACE FOR US, JUST A BIT LESS THAN WE'RE USED TO. WE'VE PROPOSED THREE PAVILIONS. WOODEN DECKS SITTING ON GABION WALLS FILLED WITH DEMOLITION WASTE. AESTHETICALLY LOOKING BACK AT OLDER INDUSTRIAL ARCHITECTURE IN VÄSTERÅS WHILE ALSO MIRRORING THE SILOS. THEY EACH PROVIDE THREE BASIC NECESSITIES — TOILETS, ROOFS, AND PLAY. ON TOP OF THAT, THEY INCLUDE ONE SLIGHT LUXURY: VIEWS. THE ROOFS ARE ACCESSIBLE AND PROVIDE LOOKOUT POINTS. NOT SO GRAND AS TO INSPIRE A FALSE SENSE OF OVERVIEW AND HUBRIS, BUT HIGH ENOUGH TO APPRECIATE A DIFFERENT VISTA.

