

Repairing the wound



Colonia Sedó was born from an opportunity of taking, as much as possible, advantage of the natural resources of the surroundings in order to generate energy for industrial production. Despite exploiting those natural resources to produce all the energy required, it was not conceived to fit into the ecosystem and preserve it. In fact, the colony generated a 'wound' and a natural discontinuity between the mountain and the river. This wound is still present today.

The starting point of our proposal is the will of sewing this wound in order to achieve the maximum ecological continuity between the mountain and the river through the colony. We believe that heritage preservation must go beyond preserving the physiognomy of the colony, we understand biodiversity as a kind of heritage that must also be restored and preserved.

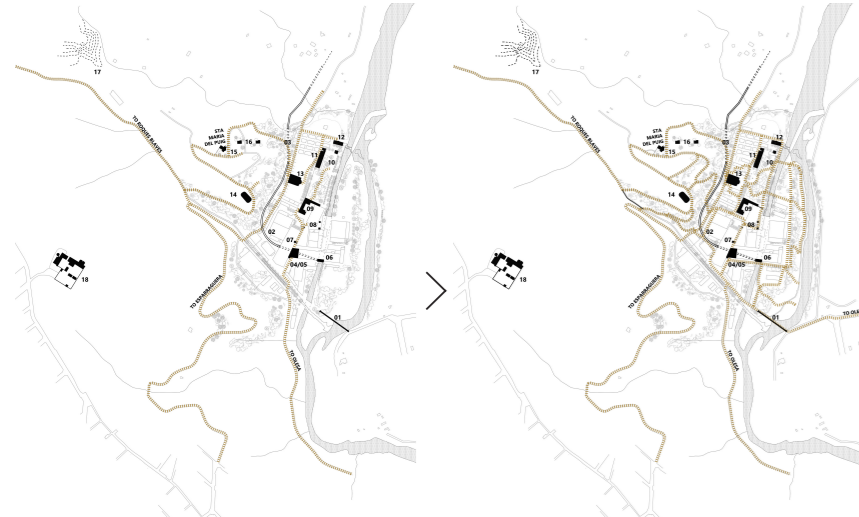
Removing the barriers



In order to regenerate the landscape and to achieve a greater biological continuity of the green through the industrial settlement, we propose 2 main interventions: 1. The suppression of architectural barriers and obsolete discontinuities achieving greater urban and biological permeability. 2. The strategic re-naturalization of a significant part of the free spaces of the colony.

Additionally, these strategies will improve the connectivity of the colony with its surroundings. Access is limited to the colony, if we do not consider the regeneration of the site to major previous infrastructural transformations, we must maintain the existing ones and improve their conditions.

Recognising the heritage



- 01 La Palanca Old bridge - To be restored
02 Underpass 'Canal' - Can be restored
03 Colonia Sedó Museum - Restored to original use
04 Colonia Sedó Museum - Restored to original use
05 Colonia Sedó Museum - Restored to original use
06 Colonia Sedó Museum - Restored to original use
07 Colonia Sedó Museum - Restored to original use
08 Colonia Sedó Museum - Restored to original use
09 Colonia Sedó Museum - Restored to original use
10 Colonia Sedó Museum - Restored to original use
11 Theatre and cultural pavilion space - Outdoor covered
12 The Foros - Transformed into residential use
13 Santa Maria del Puig Chapel - Can be restored
14 Santa Maria del Puig Chapel - Can be restored
15 Santa Maria del Puig Chapel - Can be restored
16 Santa Maria del Puig Chapel - Can be restored
17 Santa Maria del Puig Chapel - Can be restored
18 Santa Maria del Puig Chapel - Can be restored
19 Santa Maria del Puig Chapel - Can be restored
20 Santa Maria del Puig Chapel - Can be restored



Moreover, we strongly believe that the colony will become a place to live and work in the time to come as soon as nature takes a main role in it.

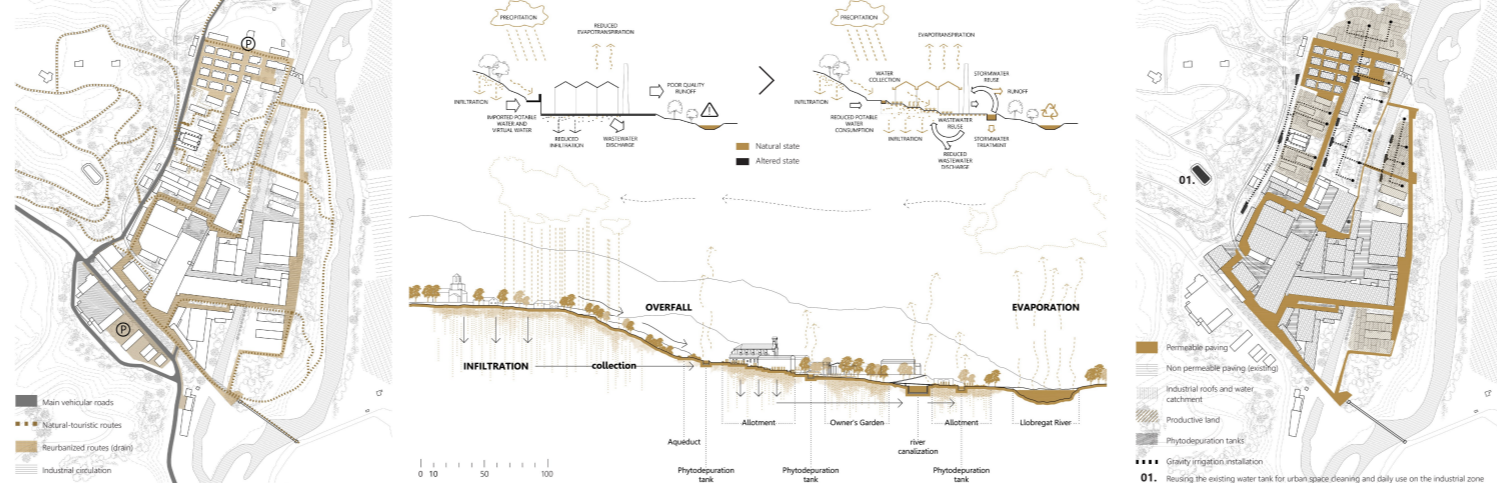


These actions would bring a new condition that had been overlooked throughout the history of the colony: the 1950s integration into the landscape. And it would not only repair the wound, it will be the engine of a change in the life model of the colony.



On the other hand, the selective and strategic actions of removing architectural barriers will make the colony much more permeable and will allow users to enjoy a wide variety of walking or cycling routes linking nature, the heritage in the colony and the heritage of its surroundings.

Mobility and new circulations



Urban development data

Table with 2 columns: Category and Value. Includes Actual data, Planned growth, Proposal, and Public buildings.



Productive landscape

Table with 2 columns: Category and Value. Includes Actual population in residential dwellings, Expected new population, etc.

Demolition and Re-use



Water management

Table with 2 columns: Category and Value. Includes Pluviometry - Collection, Irrigation, and Grey water.

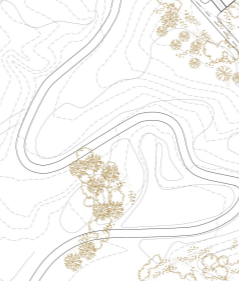
Productive areas for water collection

Table with 2 columns: Category and Value. Includes Roof area - industrial zone, Roof area - residential zone, etc.

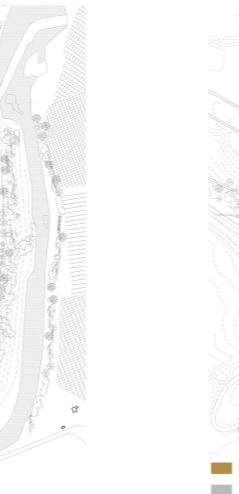
Grey water

Table with 2 columns: Category and Value. Includes Potential total population, Demand new / person / day, etc.

Urban development



Uses and public utilities



Pluviometry - Collection

Table with 2 columns: Category and Value. Includes Demand, Irrigation, and Grey water.

Productive areas for water collection

Table with 2 columns: Category and Value. Includes Roof area - industrial zone, Roof area - residential zone, etc.

Grey water

Table with 2 columns: Category and Value. Includes Potential total population, Demand new / person / day, etc.

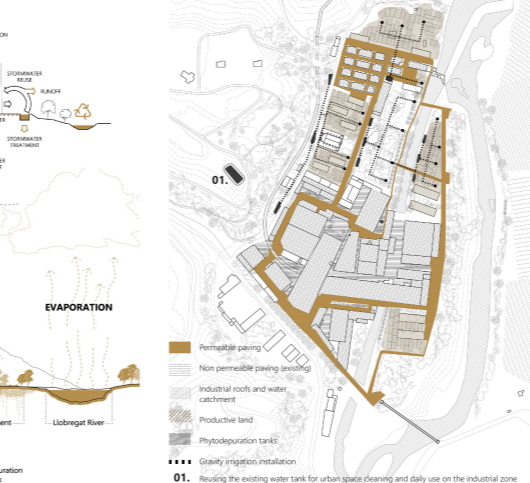
Urban development



Uses and public utilities



Productive landscape and water management



Water management

Table with 2 columns: Category and Value. Includes Pluviometry - Collection, Irrigation, and Grey water.

Productive areas for water collection

Table with 2 columns: Category and Value. Includes Roof area - industrial zone, Roof area - residential zone, etc.

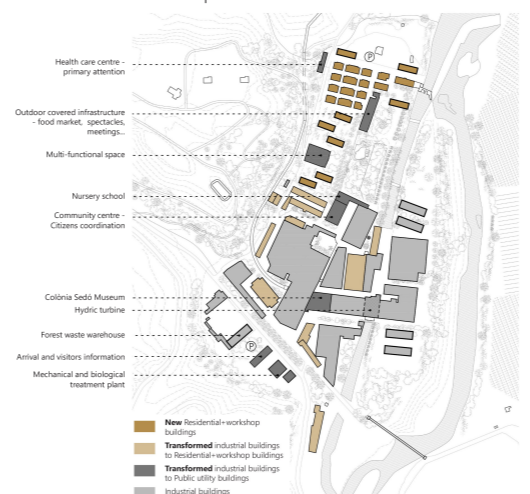
Grey water

Table with 2 columns: Category and Value. Includes Potential total population, Demand new / person / day, etc.

Urban development



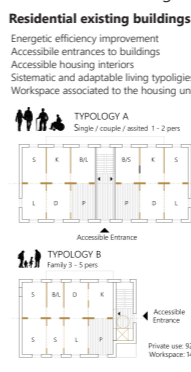
Uses and public utilities



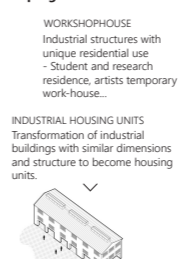
Urban Development



RENOVATING existing buildings



REPROGRAMMING OF industrial buildings



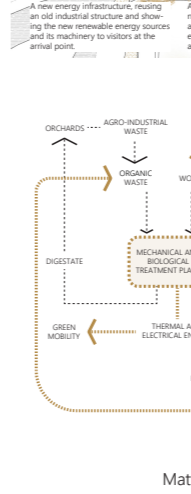
NEW residential buildings



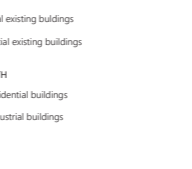
NEW industrial buildings



Matter flows



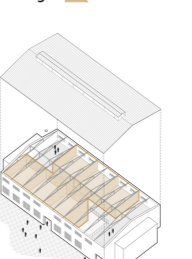
NEW residential buildings



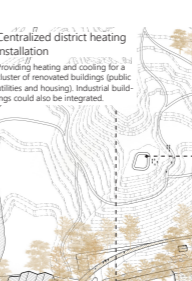
RENOVATING existing buildings



REPROGRAMMING OF industrial buildings



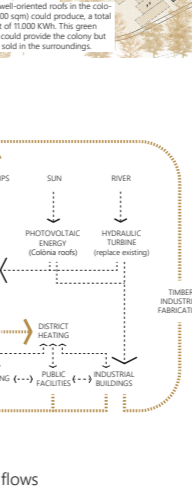
NEW residential buildings



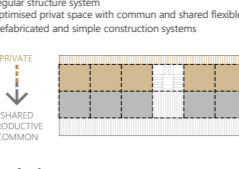
NEW industrial buildings



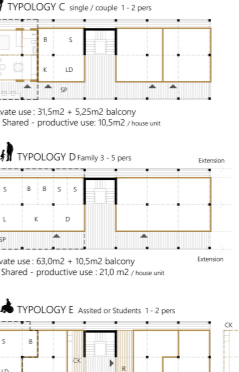
Matter flows



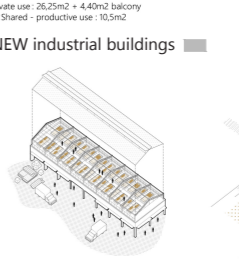
NEW residential buildings



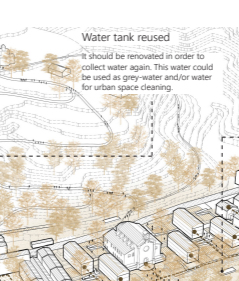
RENOVATING existing buildings



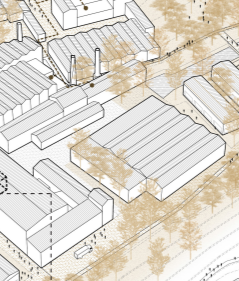
REPROGRAMMING OF industrial buildings



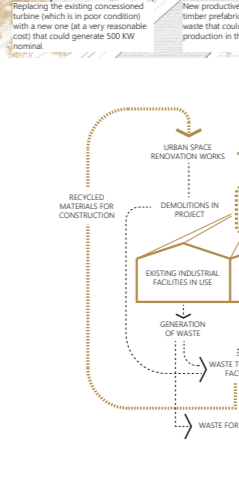
NEW residential buildings



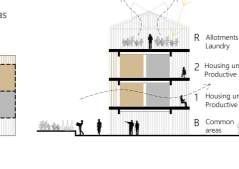
NEW industrial buildings



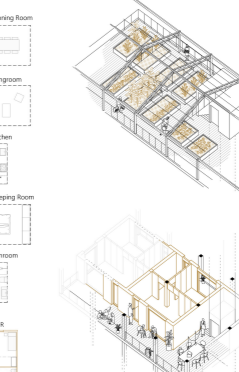
Matter flows



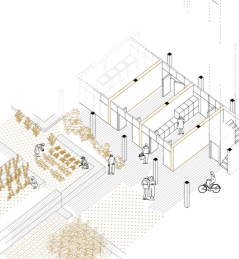
NEW residential buildings



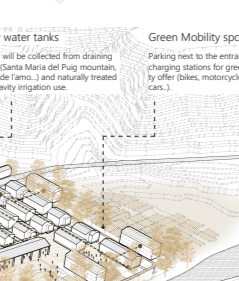
RENOVATING existing buildings



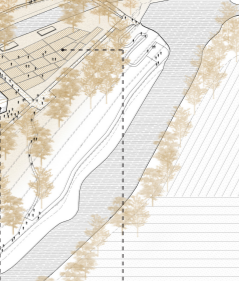
REPROGRAMMING OF industrial buildings



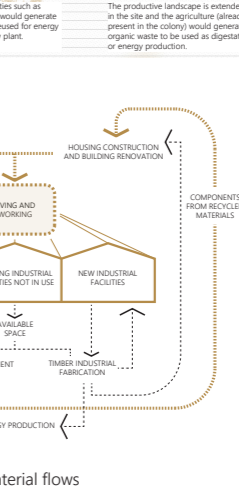
NEW residential buildings



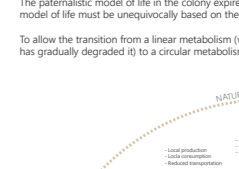
NEW industrial buildings



Matter flows



New vitalities



A more circular economy in the colony should be promoted.

Unlike other degraded areas, the colony already has productive activity that creates jobs. This activity must be preserved and proper living conditions must be offered so that the workers can feed on the rest of the colony's offer and even live there. But regarding the arrival of new productive activities, those that would divert activity to the colony should be encouraged and prioritized.

In this sense, the emergence of new needs and demands caused by the arrival of new users, plus the necessary productive activity derived from the process of regeneration of the colony (urban space renovation, exploitation of gardens and associated infrastructures, construction of new cooperative housing...) may have a place in the industrial area of the colony, if the new productive activity is nourished by the availability of existing spaces and infrastructures, and at the same time serves the needs of the colony, a more circular model of economy will be achieved.

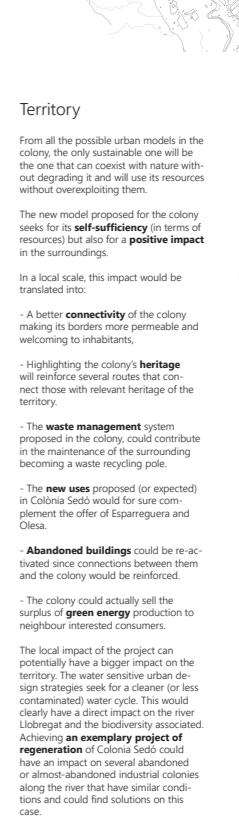
Territory



From all the possible urban models in the colony, the only sustainable one will be the one that can coexist with nature without degrading it and will use its resources without overexploiting them.

The new model proposed for the colony seeks for its self-sufficiency in terms of resources) but also for a positive impact in the surroundings. In a local scale, this impact would be translated: - A better connectivity of the colony making its borders more permeable and welcoming to inhabitants. - Highlighting the colony's heritage will reinforce several routes that connect those with relevant heritage of the territory. - The waste management system proposed in the colony could contribute in the maintenance of the surrounding becoming a waste recycling pole. - The new uses proposed (or expected) in Colonia Sedó would for sure complement the offer of Esparreguera and Olesa. - Abandoned buildings could be re-activated since connections between them and the colony would be reinforced. - The colony could actually sell the surplus of green energy production to neighbour interested consumers. The local impact of the project can potentially have a bigger impact on the territory. The water sensitive urban design strategies seek for a cleaner (or less contaminated) water cycle. This would clearly have a direct impact on the river Llobregat and the biodiversity associated. Achieving an exemplary project of regeneration of Colonia Sedó could have an impact on several abandoned or almost abandoned industrial colonies along the river that have similar conditions and could find solutions on this case.

Matter flows



Material flows



Matter flows

