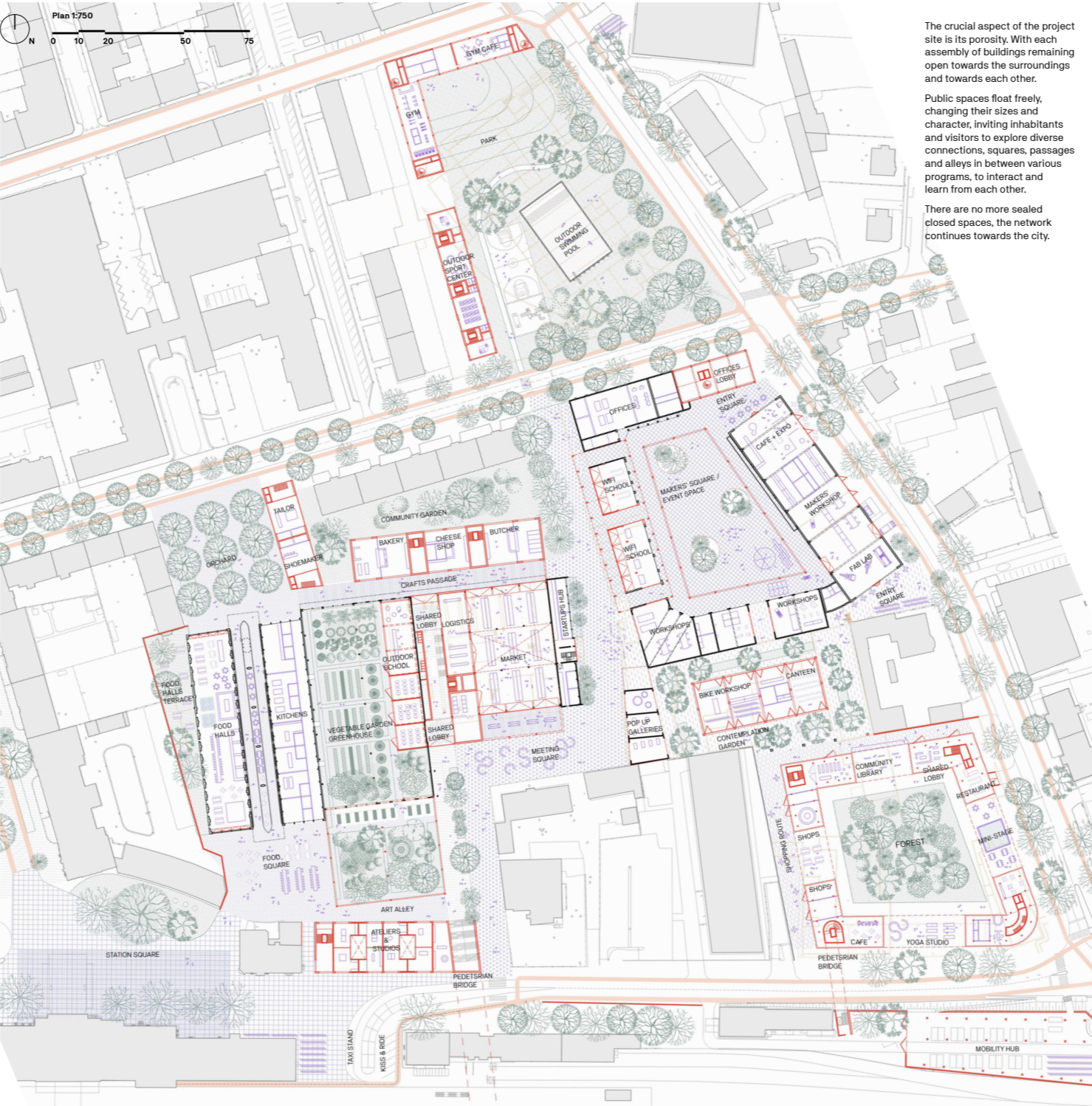
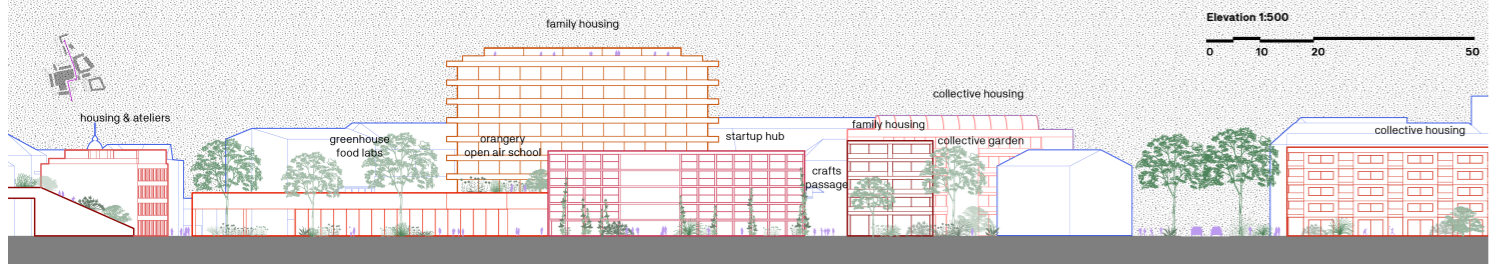


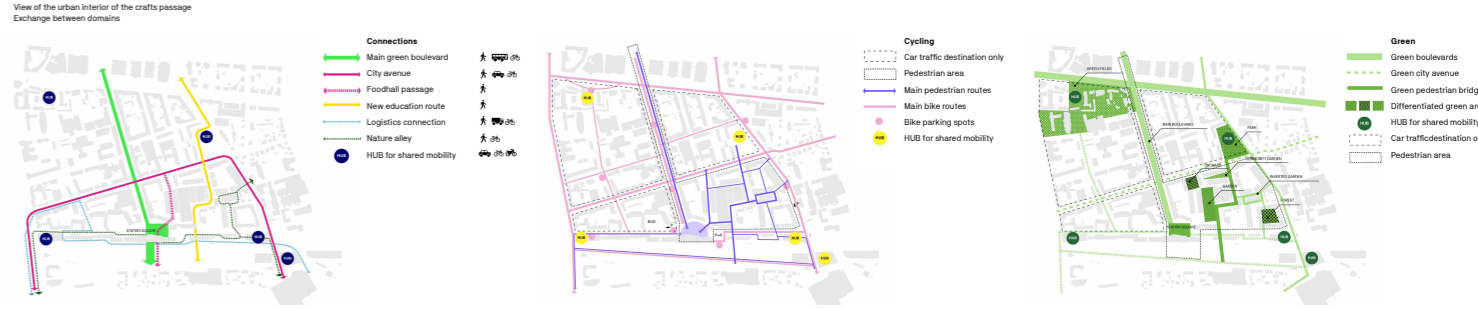
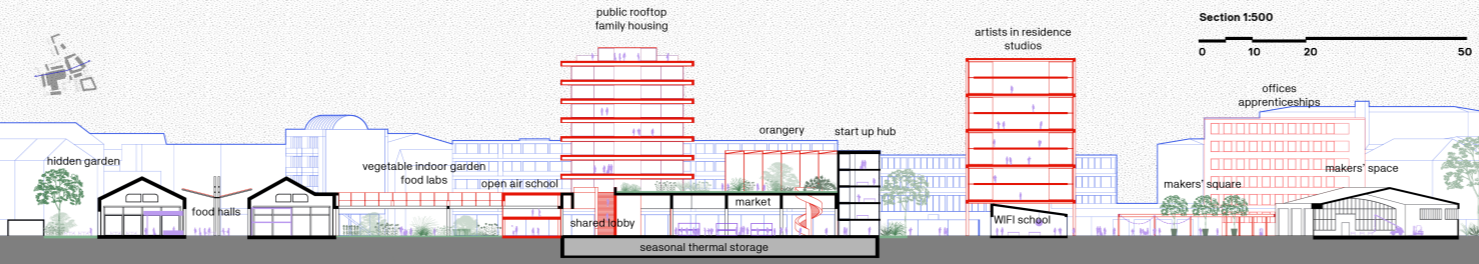
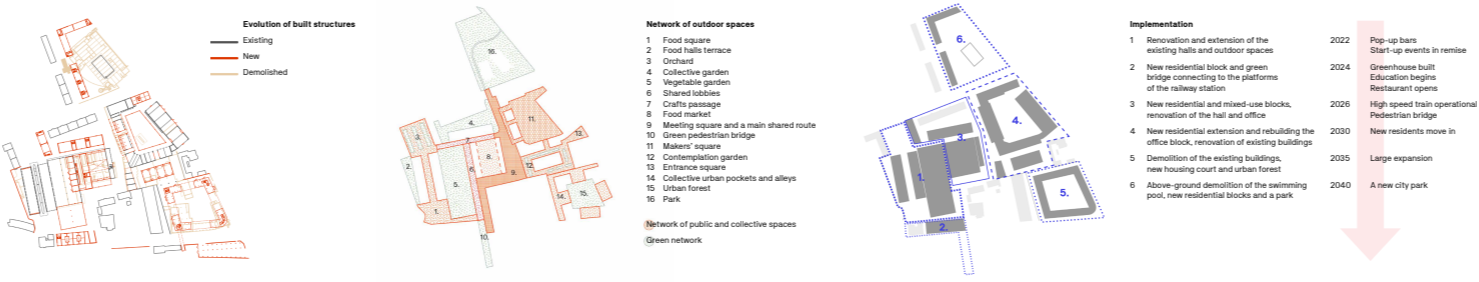
- 1 Landing**
The position where a proposed green pedestrian bridge enters the site, making a direct connection between the buildings that hides inside of the block and the city on the other side.
- 2 Ramps**
A residential building with a substantial depth of 15m, setback by the insertion of two voids along a large interior corridor, is able to house a number of unconventional interesting spatial typologies. The block completes the building on the corner of Bahnhof square and relative southern boundary of the site for the ground floor there can be studios for artists that live in the block.
- 3 Greenhouse**
The position where a proposed green pedestrian bridge enters the site, making a direct connection between the buildings that hides inside of the block and the city on the other side.
- 4 Market**
The structure of the existing workshop is kept. The empty hall provides a large covered market square. On top there's a publicly accessible raised garden with an energy field with that trees that can be used for small events.
- 5 Collective garden**
Mixing the structure of existing buildings of specific shapes and sizes precisely following their program is expanded by the addition of a lower "green" from the present structure.
- 6 Makers' court**
When the car driveway is almost entirely removed, only a row of columns remains, defining the soft edge between adjacent domains.
- 7 Quiet garden**
The plot is enclosed yet accessible from all sides. A single building in the middle, with an open, traversable ground floor, creates an "invited" spatial possibilities. The apartments house the students of the court as well as invited artists in residence.
- 8 Forest**
With the demolition of the swimming pool space opened up for the creation of a large city park, ecologically located in the wider urban context, in-between several large educational institutions.
- 9 Park**
The structure of the existing buildings of specific shapes and sizes precisely following their program is expanded by the addition of a lower "green" from the present structure.



The crucial aspect of the project site is its porosity. With each assembly of buildings remaining open towards the surroundings and towards each other.

Public spaces float freely, changing their sizes and character, inviting inhabitants and visitors to explore diverse connections, squares, passages and alleys in between various programs, to interact and learn from each other.

There are no more sealed closed spaces, the network continues towards the city.



We propose a clear new structure for the strategic site, defining it as four quadrants connected by a green cross of streets where car parking is replaced with rows of plants and flowers, and the road is covered by a canopy of trees.

With a priority for pedestrians and cyclists, the connections between city center and the train station are strengthened and transformed into green boulevards and alleys.