

Once upon a time in Forestrand

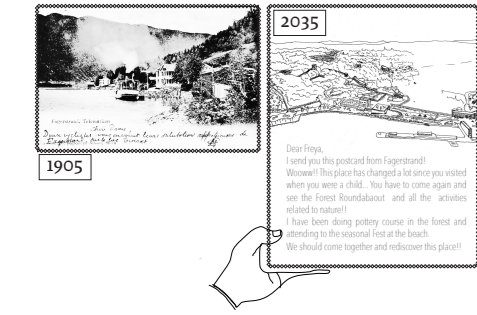
form follows fictions

from EGology to ECOlogy

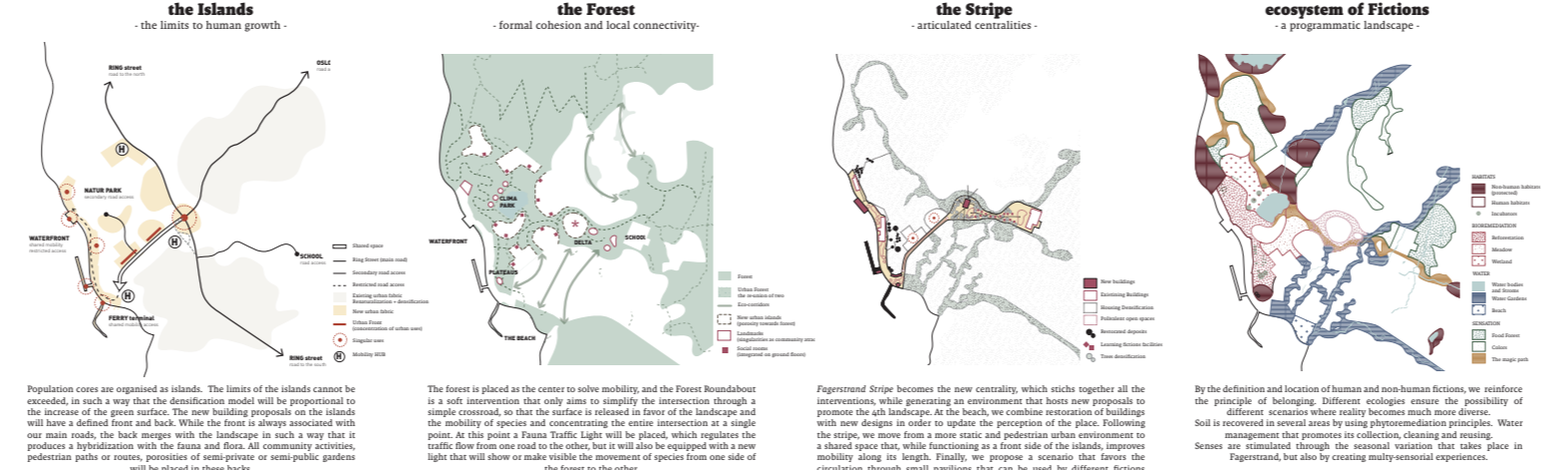
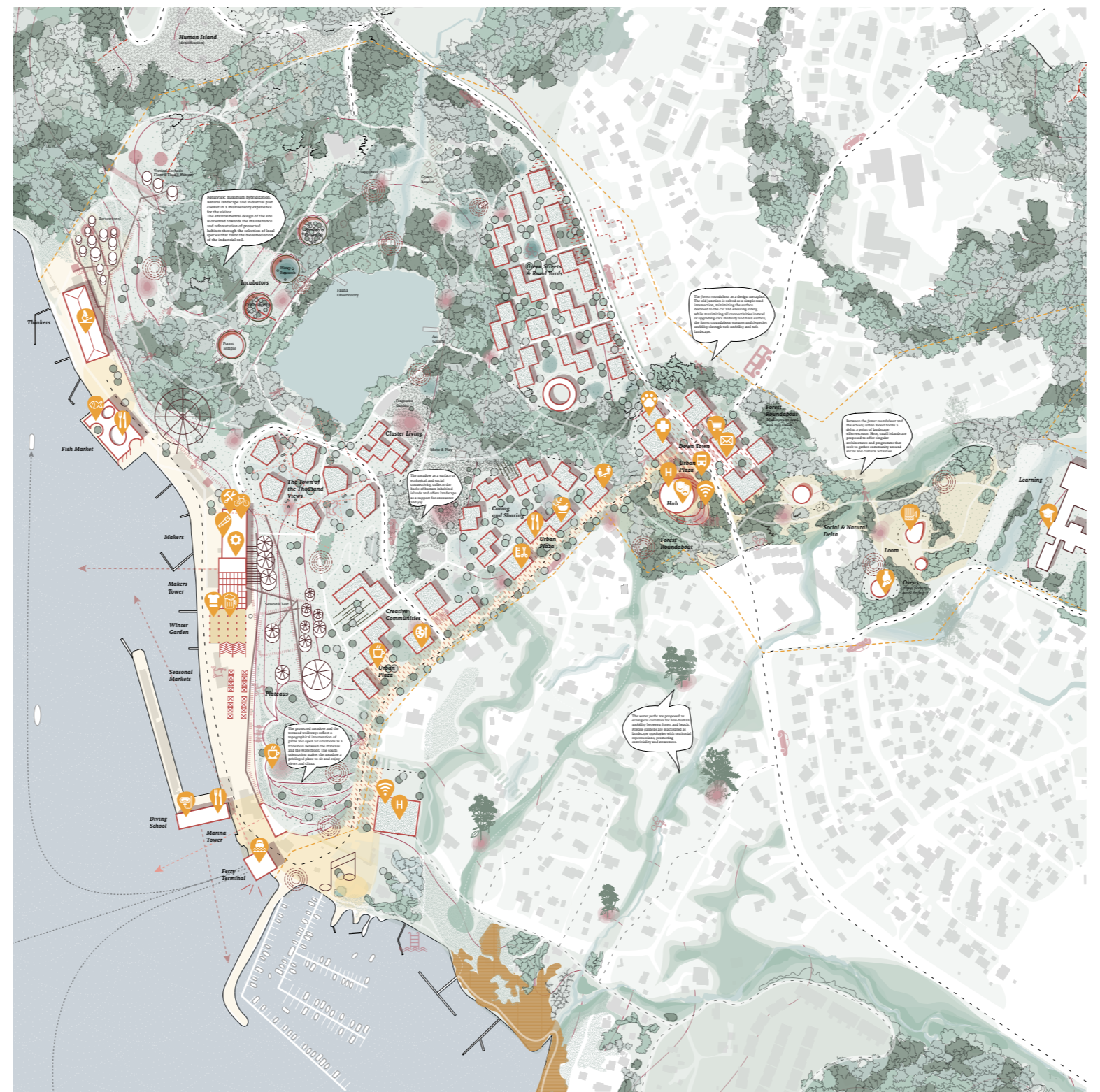
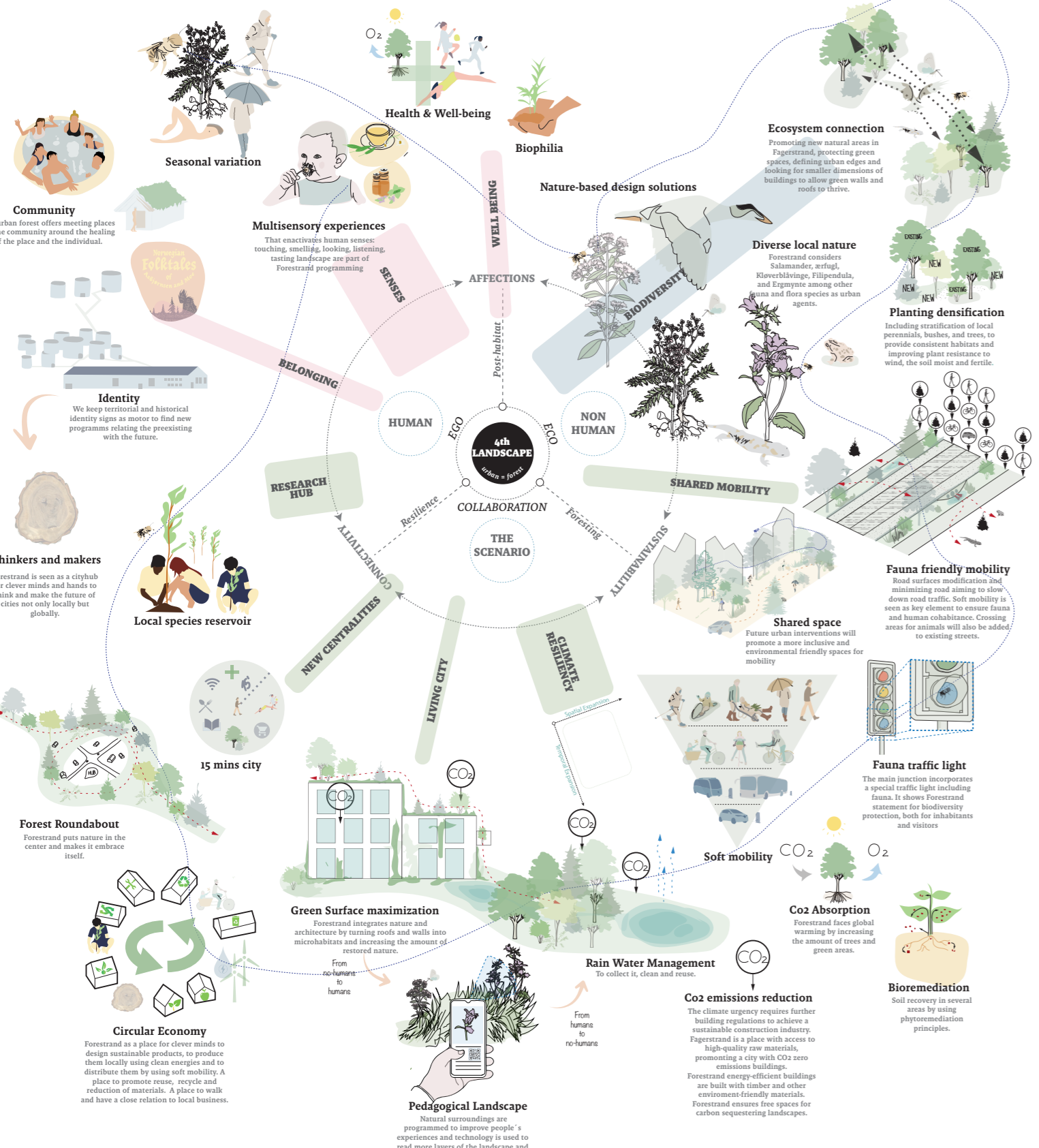
Once upon a time in Forestrand

Once upon a time in Forestrand

Here we are going down through one of the old coves! It is now a valuable species reservoir, linked both with the preservation of local habitats, as well as economy thanks to the research labour of the Thinkers. We will visit them later.



How do we mind a Non-Human Urban? Can fiction be inhabited? Where is Forestrand? Form doesn't follow function anymore. Forestrand is the reality that already exists, but it requires a new look at the territory. Forestrand is currently asleep. By moving through this place, we identify a series of fictions that are linked to the forest that surrounds Forestrand and that allow us to discover new territorial dots. A change takes place from an ergonomic model to an ecocentric model in which the forest becomes the center and from which a hybrid model that connects human and non-human realities will be articulated. This coexistence of realities provides us with programs dispersed throughout the territory, we call them fictions. Forestrand goes through them and gives shape to models of construction of the territory and habitats, the landscape, that improves the existing reality going back to Forestrand as identity. We establish the concept of Form Follows Fiction, therefore, as a mechanism of hybridisation between the fictions and realities of the human world and of the non-human world.

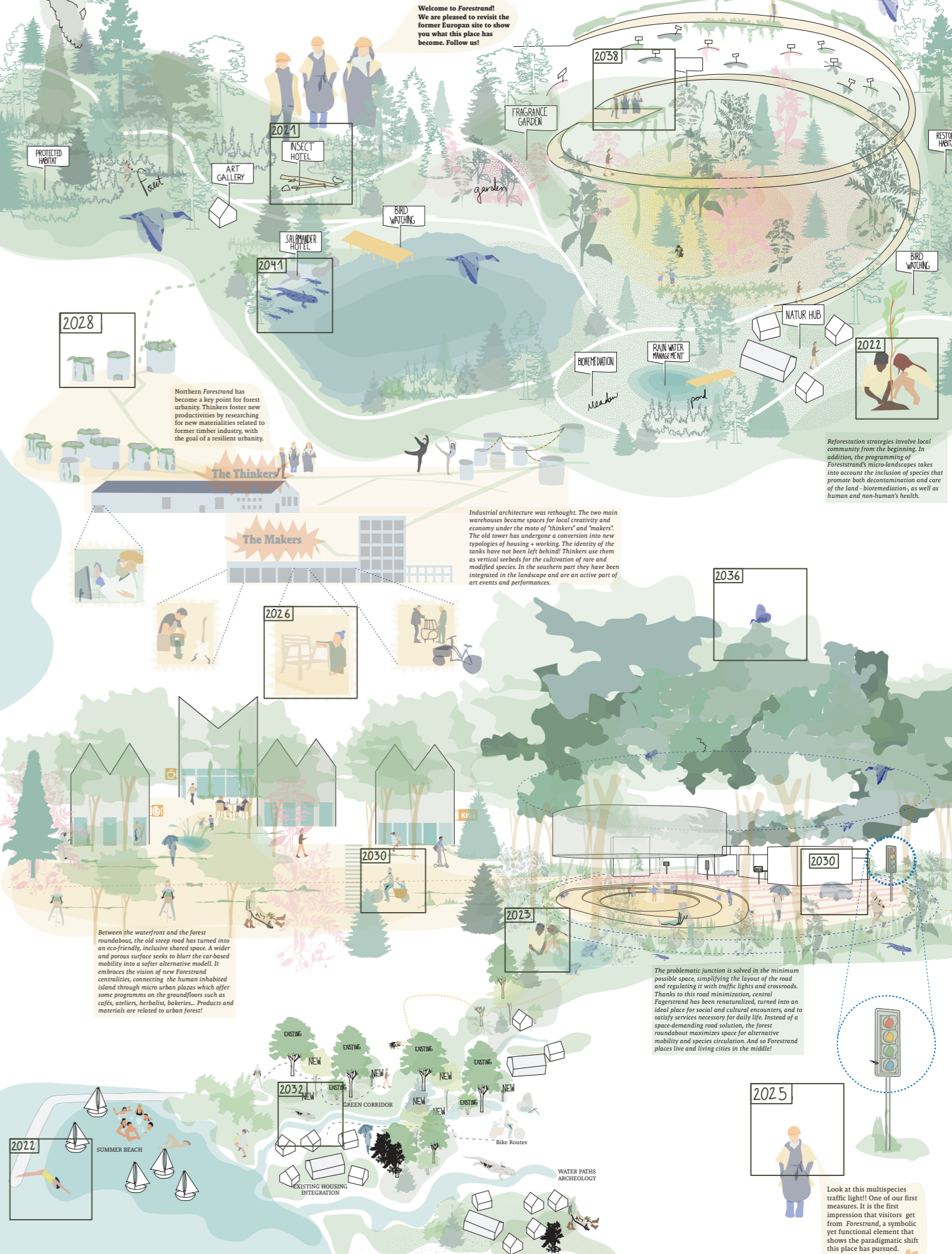


Population cores are organized as islands. The limits of the islands cannot be exceeded, in such a way that the densification model will be proportional to the increase of the green surface. The new building proposals on the islands will have a defined front and back. While the front is always associated with our main roads, the back merges with the landscape in such a way that it produces a hybridation with the fauna and flora. All community activities, pedestrian paths or routes, position of semi-private or semi-public gardens will be placed in these backs.

The forest is placed at the center to solve mobility, and the Forest Roundabout is a soft intervention that only aims to simplify the intersection through a simple connection, so that the surface is released in favor of the landscape and the mobility of species and concentrating the entire intersection at a single point. At this point a Fauna Traffic Light will be placed, which regulates the traffic flow from one road to the other, but it will also be equipped with a new light that will show make visible the movement of species from one side of the forest to the other.

Forestrand Stripe becomes the new centrality, which sticks together all the interventions, while generating an environment that hosts new proposals to promote the landscape. At the beach, we combine restoration of facilities with new designs in order to update the perception of the place. Following the stripe, we move from a more static and pedestrian urban environment to a shared space that, while functioning as a front side of the islands, improves mobility along its length. Finally, we propose a scenario that favors the circulation through small pavements that can be used by different fictions derived from the forest.

By the definition and location of human and non-human fictions, we reinforce the principle of belonging. Different ecologies ensure the possibility of different scenarios where reality becomes much more diverse. Soil is recovered in several areas by using phytoremediation principles. Water management that promotes its collection, cleaning and reusing. Senses are stimulated through the seasonal variation that takes place in Forestrand, but also by creating multi-sensory experiences.



Look at this multispecies traffic light! One of our first measures. It is the first impression that visitors get from Forestrand, a symbolic yet functional element that shows the paradigmatic shift that this place has pursued.