

CULTIVATING SYNERGIES

Carouge | CH

The Arve's valley, an anthropologized landscape

It is close to this grey wire that the historical city of Carouge was first built. The river itself might seem a stripe of natural space in the city, now that long sides of its banks are urbanized, but even its path has been shaped to make out of meanders buildable lands. Until now, the water table expands from Eau-Vives down to Chancy creating an invisible landscape of the Arve way beyond its banks. The Arve is a strong landscape element with changing qualities throughout time and space. The project attaches importance to give a continuous access to the river with activities and new opportunities of experiencing the river banks.

An unstructured neighborhood, but well equipped

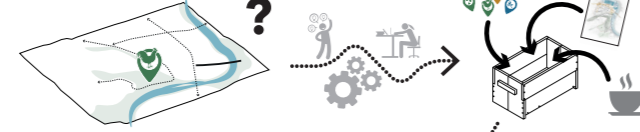
Fontenette has been the result of the urban expansion of Carouge. Whereas the historical city is dense and formed by strong axes, after the rue de la Fontenette, the urbanization crumbles in incoherent pieces. The axes of transport rely mainly on the use of the car whereas pedestrian paths are poorly connected. The Rue de Veyrier, which is so vibrant and lively, transforms into the Route de Veyrier after crossing the rue de la Fontenette. The project is to extend this street with its urban qualities, and spaces until the east end of the neighborhood. And to create local centralities and denser areas, in terms of built structures but also to foster neighborhood's life by implementing new activities. The secondary net of pedestrian routes and streets is also at the core of the planning.

A dichotomy of woods and fields

The Canton's territory is a complex patchwork of urban spaces, agriculture, woods and water. Regrettably, the lack of connection and interaction of these spaces create a scattered pattern. The project tries to weave these land stripes in order to create a fertile space for biodiversity and to improve the quality and the landscape's experience. Agroforestry, connection of the woods' hiking paths, educational features are part of the tools suggested to integrate the potential dynamics in a coherent scheme.

10 the suggestion box

Analyzing the site and developing a toolbox



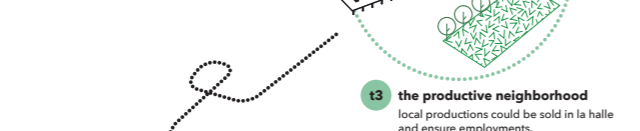
11 the wishes time

Participatory workshops with inhabitants and meetings with local authorities will permit detailing and refining the toolbox. Some in situ workshops will ensure the scheme's feasibility.



12 the transformation time

agroforestry activities and la halle-verger are the first facilities realized. During all the time, the toolbox is updated thanks to periodic workshops.



13 the productive neighborhood

local productions could be sold in la halle and ensure employments. new constructions will be built with local materials.



14 cultivating synergies

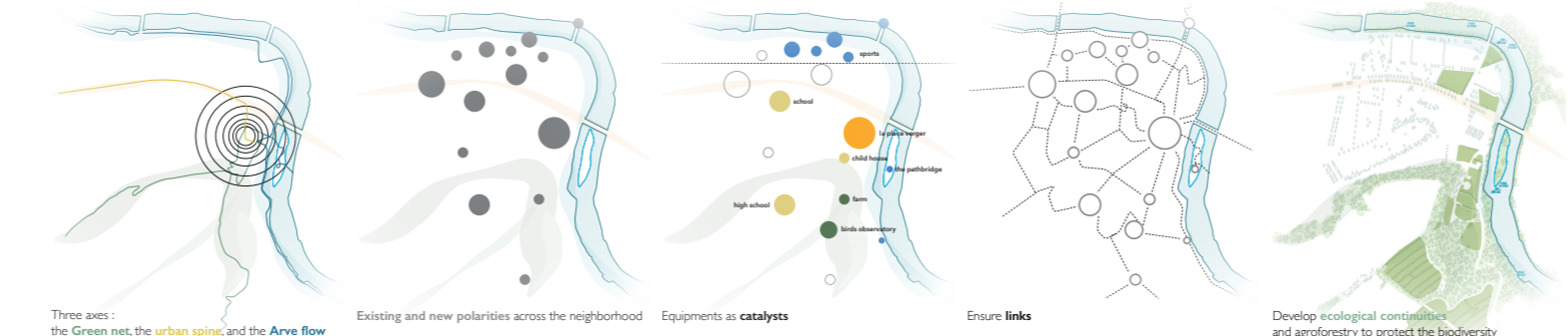
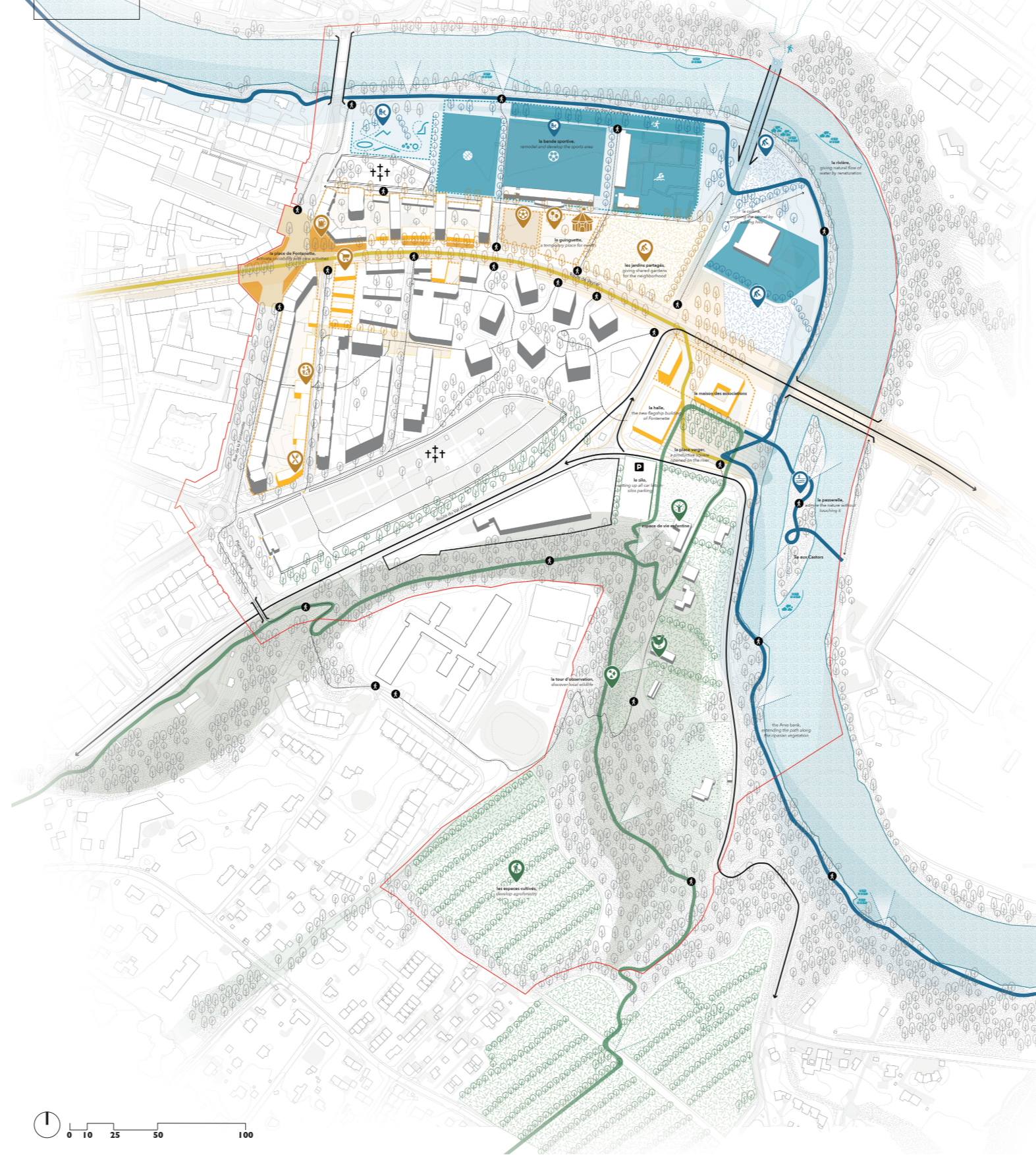
Fontenette, a new participative neighborhood

Implementing la Fontenette together, the real project

The proposal is not supposed to represent the final scheme of the new urban development. It is rather a process in which we propose a diagnosis of the site and a conceptual scheme that connects diverse potentialities of the site. In addition to this scheme, a toolbox, composed of diverse actions that could be implemented in the site, creates a basis for discussion in the frame of a collaborative project. Our toolbox puts in perspective urban, social and environmental thematic, echoing the inhabitants expectations and actual challenges. The project lies in the process of boosting collective intelligence. Series of meetings, workshops, experiments with the inhabitants will foster the participation and the arising of new dynamics and interventions on the landscape of la Fontenette.

CULTIVATING SYNERGIES

Carouge | CH



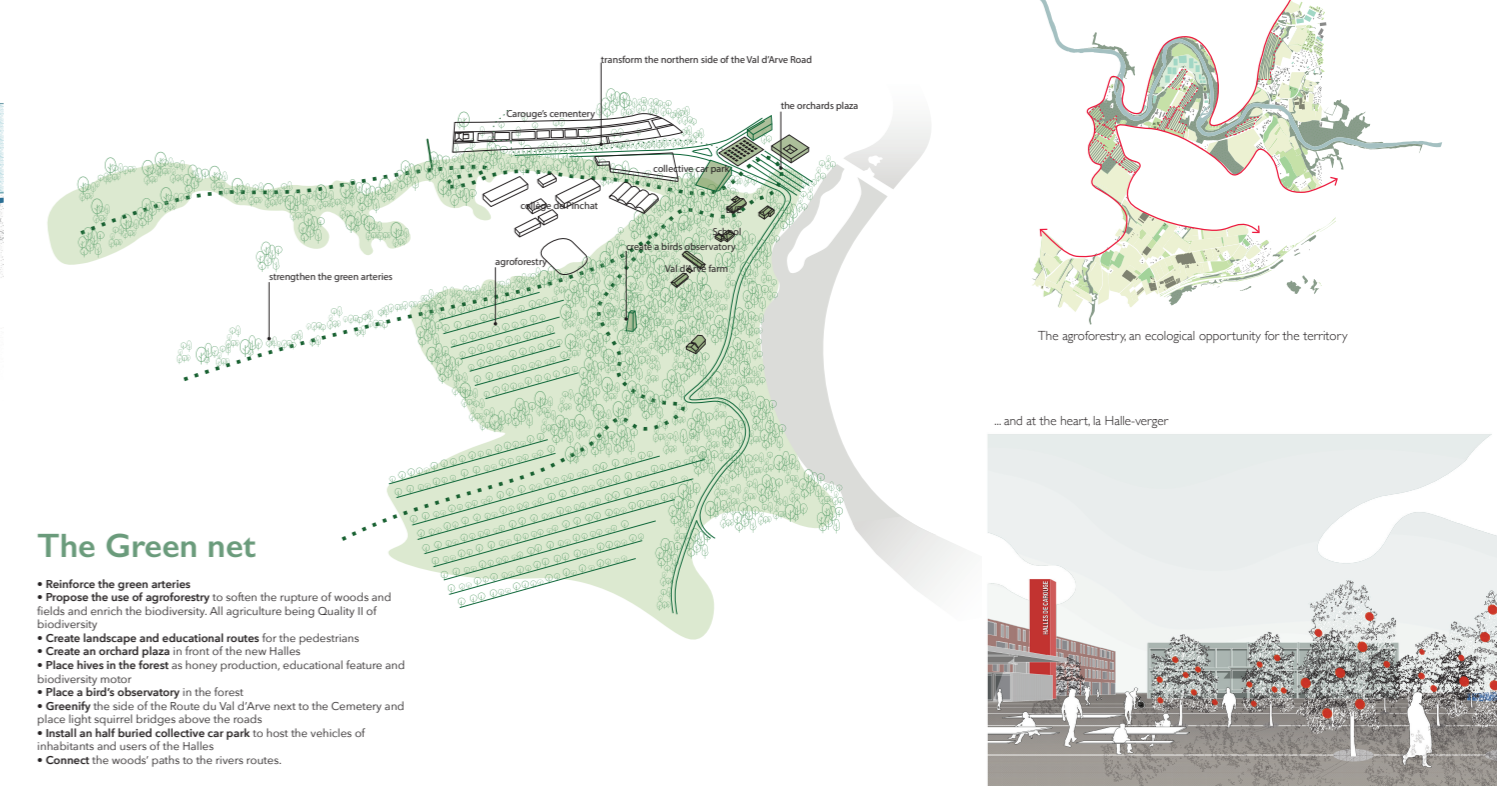
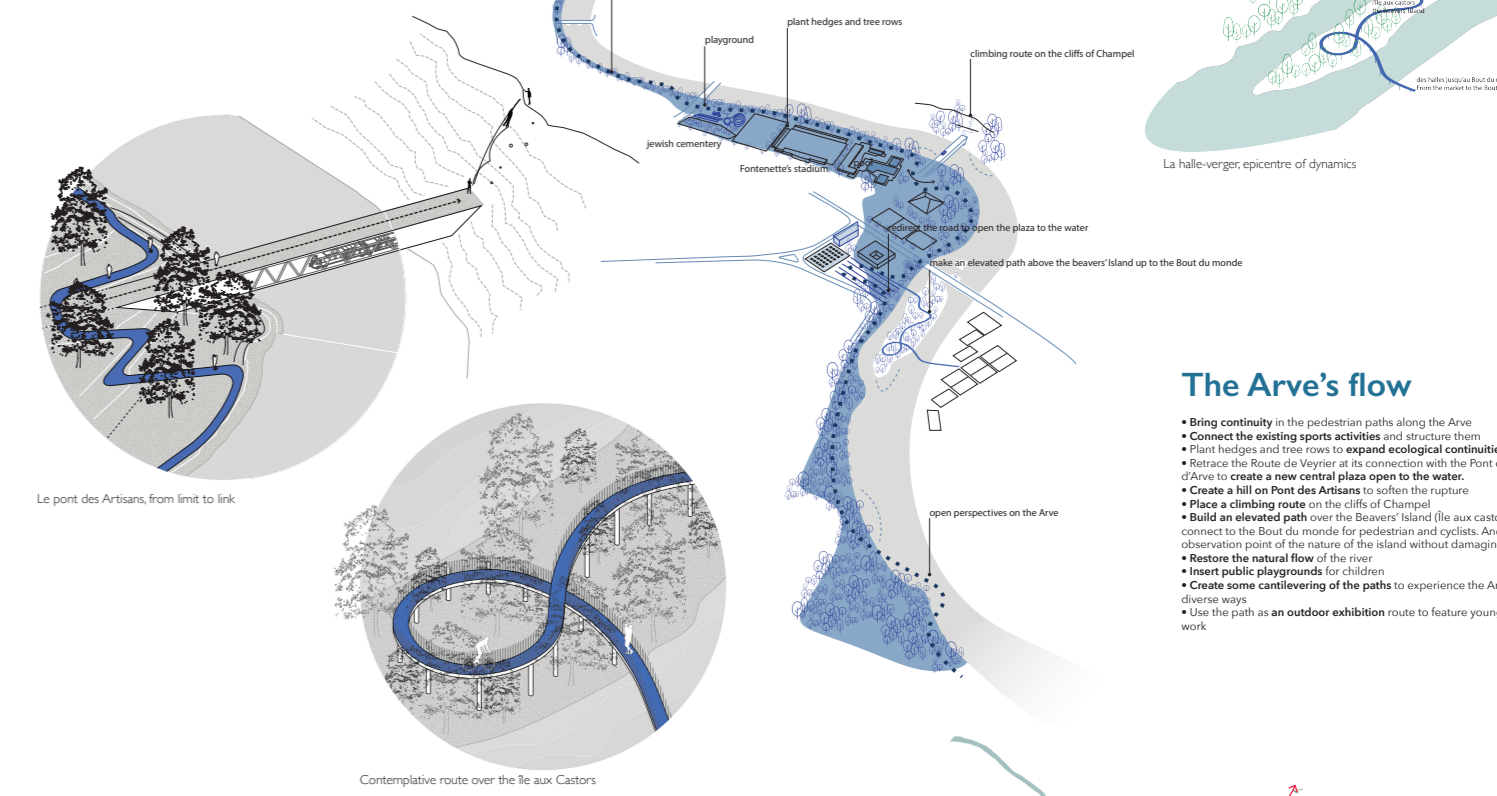
2

CULTIVATING SYNERGIES

Carouge | CH

The urban spine

- Extend the Rue de Veyrier until the Arve
- Redefine the crossing Rue de Veyrier - Rue de la Fontenette to make a public space of it.
- Change the profile of the Route de Veyrier and planting more trees, giving more space to pedestrians
- Densify along the Route de Veyrier by inserting small blocks that will create a street front
- Densify the Chemin du Centurion by inserting middle size housings
- Extend the secondary pedestrian web in the depth of the neighborhood
- Offer the possibility of urban gardening as a social activity for the inhabitants of the neighborhood
- Transform the Service Cantonal des Véhicules in the Halles as a covered market, and create a plaza that runs up to the Arve
- Use the SCV office building as an association's social space
- Bring public and indoor cultural activities to implement the sport facilities of la Fontenette



The Green net

- Reinforce the green arteries
- Propose the use of agroforestry to soften the rupture of woods and fields and enrich the biodiversity. All agriculture being Quality II of biodiversity
- Create landscape and educational routes for the pedestrians
- Create an orchard plaza in front of the new Halles
- Place hives in the forest as honey production, educational feature and biodiversity motor
- Place a bird's observatory in the forest
- Greenify the side of the Route du Val d'Arve next to the cemetery and place light squirrel bridges above the roads
- Install an half buried collective car park to host the vehicles of inhabitants and users of the Halles
- Connect the woods' paths to the rivers routes.

3

The Arve's flow

- Bring continuity in the pedestrian paths along the Arve
- Connect the existing sports activities and structure them
- Plant hedges and tree rows to expand ecological continuities
- Routage the Route de Veyrier at its connection with the Pont du Val d'Arve to create a new central plaza open to the water.
- Create a hill on Pont des Artisans to soften the rupture
- Place a climbing route on the cliffs of Champal
- Build an elevated path over the Beavers' Island (Ile aux castors) to connect to the Bout du monde for pedestrian and cyclists. And make an observation point of the nature of the island without damaging it
- Restore the natural flow of the river
- Insert public playgrounds for children
- Create some cantilevering of the paths to experience the Arve in diverse ways
- Use the path as an outdoor exhibition route to feature young artists' work

