

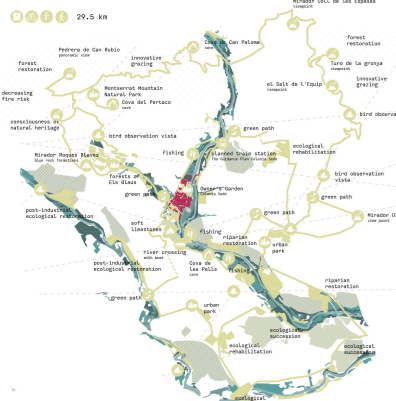
# The County: Territorial Convergence

Caminos de Sedó

Scrutinizing the unique composition of this territory's characteristic layers, the framework of routes aims to create a divergent infrastructure to foster conversations between the two towns; create links between past and present; and let new realities emerge through establishment of connections between human and nature, allowing the Colony ground to be activated by new channels and networks. With oscillating ties to a myriad of various local assets, the Colony emerges as a strategic point on the multi-layered routes framework, reconciling its surrounding resources, mending broken relationships and provoking new ones. While each route connects and converges the territorial scale, each of them also investigates programs and stimulates events within the Colony; by doing so, the framework encourages a horizontal communication model between the institutions, associations and the individuals; it promotes the multi-scalar inclusion of all stakeholders and social groups to achieve meaningful, impactful and enduring transformations.

## Nature Discovery Route

This route connects caves, birdwatching destinations, fishermen points, ecosystem recovery fields, blue rocks, miradors and natural parks with Sedó to orient residents and visitors to explore and protect the surrounding landscape.



## Digital Framework

An accessible virtual interface communicates and informs the route related networks, gathering and connecting various actors and environments around the Colony.

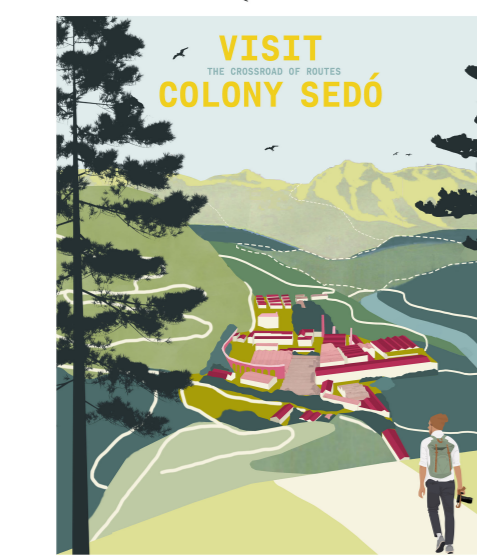
## Local Production Route

This route connects local artists, workshops, logistics, recycle centers, textile manufacturers and industrial campuses with Colony, forming a network of production that can share means and ways of making and to turn Sedó into an innovation and production hub.



## Agriculture Route

Connects the agricultural territories, farmhouses, waters channels, production facilities, agronomist areas, olive fields, viticulture, timbershops and vineyards with Sedó to form a network of sustainable agricultural production and education.



## Llobregat Colonies



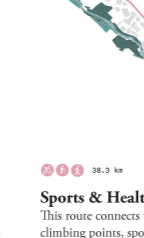
## Water Ecology



## Mobility Network



## Sports & Health Route



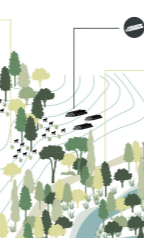
## Heritage Route



## Social-Cultural Programs Route



## Water/River Route



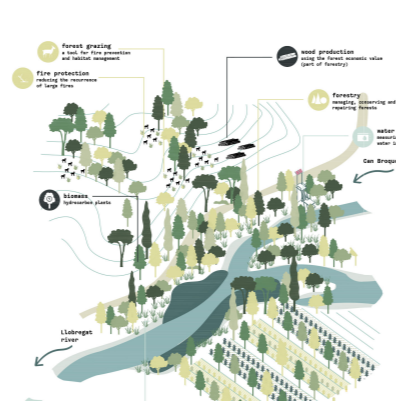
# The Colony: Crossroads of Flows

Caminos de Sedó

All routes pass through the grounds of the Colony infiltrating its secluded formation from different entry points and itineraries to strengthen its ties to the close vicinity, it is almost as if the routes were sewing the Colony to its surrounding fabric. This action of penetration and infiltration, thus, enables porosity within the campus allowing each route to interact, touch, transform, and leave traces: it triggers programs to fuse and blend; it creates a diverse natural, socio-cultural and economic ecosystem. The north-south axis of more frequent route intersections emerges as the main promenade with catalyst plazas and catalyst community buildings nurtured by the variety of inputs both for public programs and also for innovative hybridity of research and industrial activities. The organic agricultural production in the orchards contributes to the robotic manufacturing production in the historic weaving warehouse. The residential units accommodate spaces for working, short-term staying and communal services. The underused common buildings extract the impulses of the routes and contain common programs.

## Performative Landscapes

The colony becomes a center for agricultural education as sustainable forestry and agricultural interventions and methodologies are applied along the surrounding lands around the Colony to address future risks such as soil quality or flood risk.



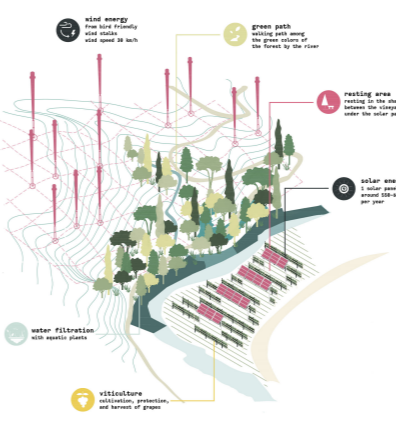
## Existing Zoning



## Multilayered Itineraries



## Programmatic Porosity

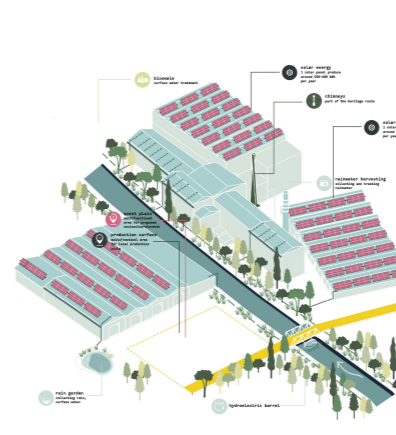


**Renewable Energy**  
Installation of eco-friendly, renewable energy cultivation tools from various natural resources (hydroelectric barrel generator, solar cells and wind-stacks) generates an integrative and self-complementary energy circuit.

# The Core: Gravitational Hybridity

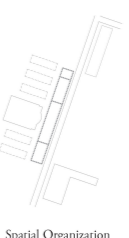
Caminos de Sedó

The current abandoned and vacated central section of the Colony emphasizes the segregation in between parts and underlines the deteriorating condition of its components. However, within the strategic template of the routes, this area has the potential to serve as the main core, not only due to its centrality, but also due to its fallow, void-like nature. This current absence creates a programmatic vacuum which can absorb anything and everything that flows through the routes, it can foster nomadism and vibrancy within the Colony, creating an ever-changing cycle of programmatic dynamism. Aiming to conduct and coordinate the influences of the routes, the project proposes a system of free-flowing occupation similar to the organizational logic of expos or industrial 'nave's. The spatial memory of the site establishes a documentary evidence and creates the parallelation of the nave lots, the explained as an active landscape and the church as the social process—a collaborative multipurpose hub.

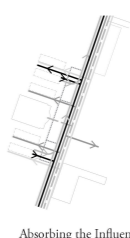


**Integrated Sustainability**  
As a space of sustainable production, the Colony benefits from integrative renewable energy resources.

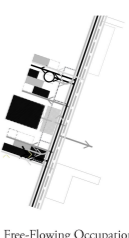
## Vacant Lots



## Catalyst Promenade



## Hybrid Core

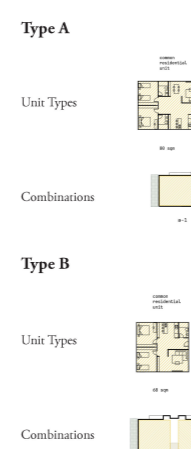


**Diversified Grounds**  
Landscape within the colony merges the means of productivity with socio-cultural/recreational programs and offers a diversified agriculture and use.

**Hybrid Core**  
The structural open frame of the loss references the codes of industrial architecture with its economies and occupational configurations; it enables utmost flexibility to employ culmination of hybridity, offering an open system that allow continual short-term or mid-term transformations as modular or local spaces.

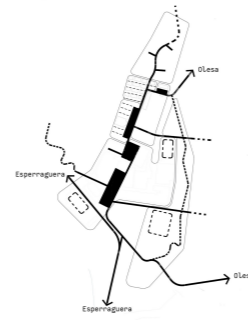
**Residential Buildings**  
Protected envelopes of these typological heritage buildings are restored with the inclusion of the local workforce and local day materials, with the proposed modular interior organization units.

**Adaptable Living**  
The project generates a participatory and transparent model that is adjustable according to user needs both in sizes of the units and also in programmatic variations.



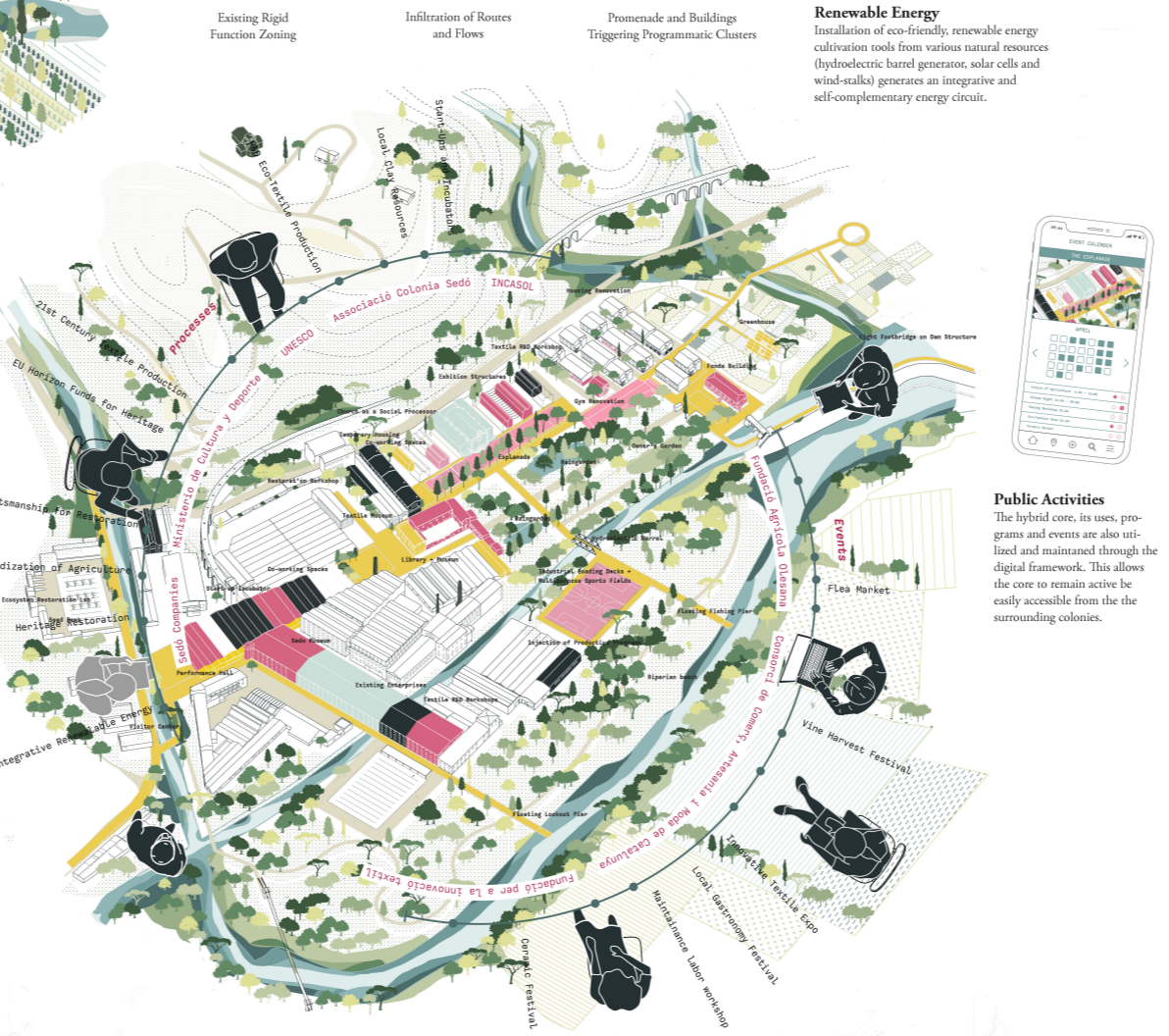
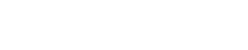
## Catalyst Promenade

The hybrid framework places the Colony at the central node where the routes flow through Sedó and transform into clusters of programs.

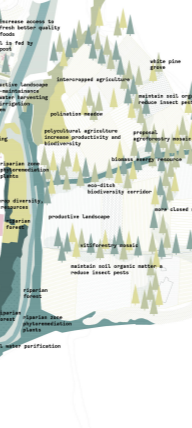


## Hydrological Network

A set of strategies are imposed within the Colony and along the rest of the river to mitigate future risks related with water, such as pollution, flooding or scarcity through bio-wales, eco-corridores, reservorios or filtraciones.



**Public Activities**  
The hybrid core, its uses, programs and events are also utilized and maintained through the digital framework. This allows the core to remain active be easily accessible from the surrounding colonies.



**Ecological Green System**  
The landscape around the Colony is evolved with new sustainable techniques and methodologies to preserve and sustain the eco-system, the river, soil, the forestry and agriculture.