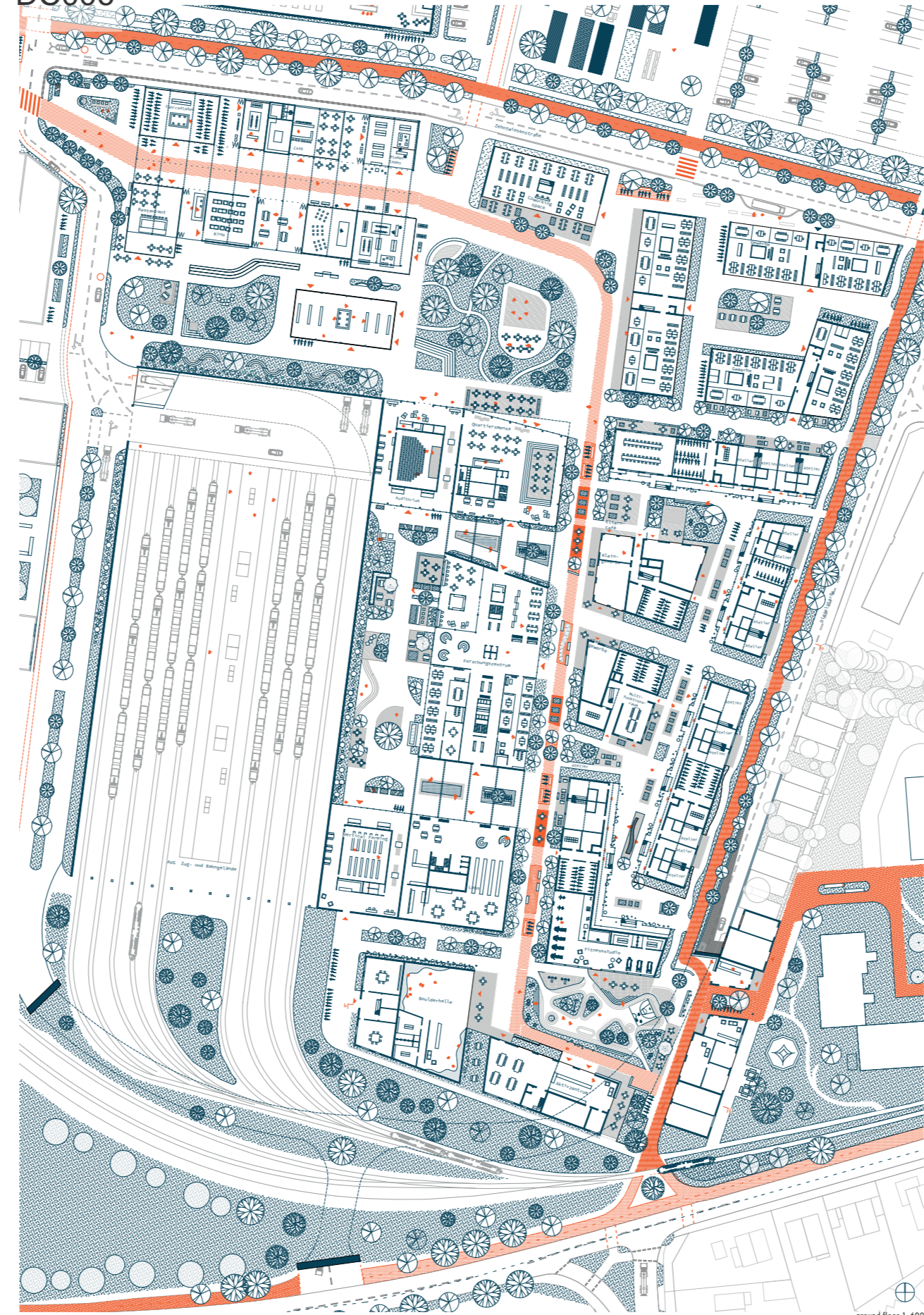




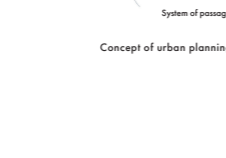
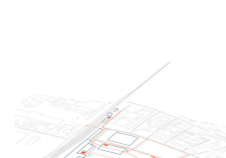
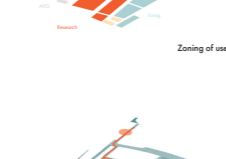
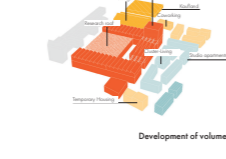
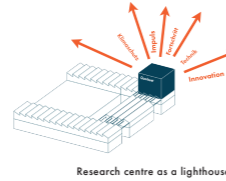
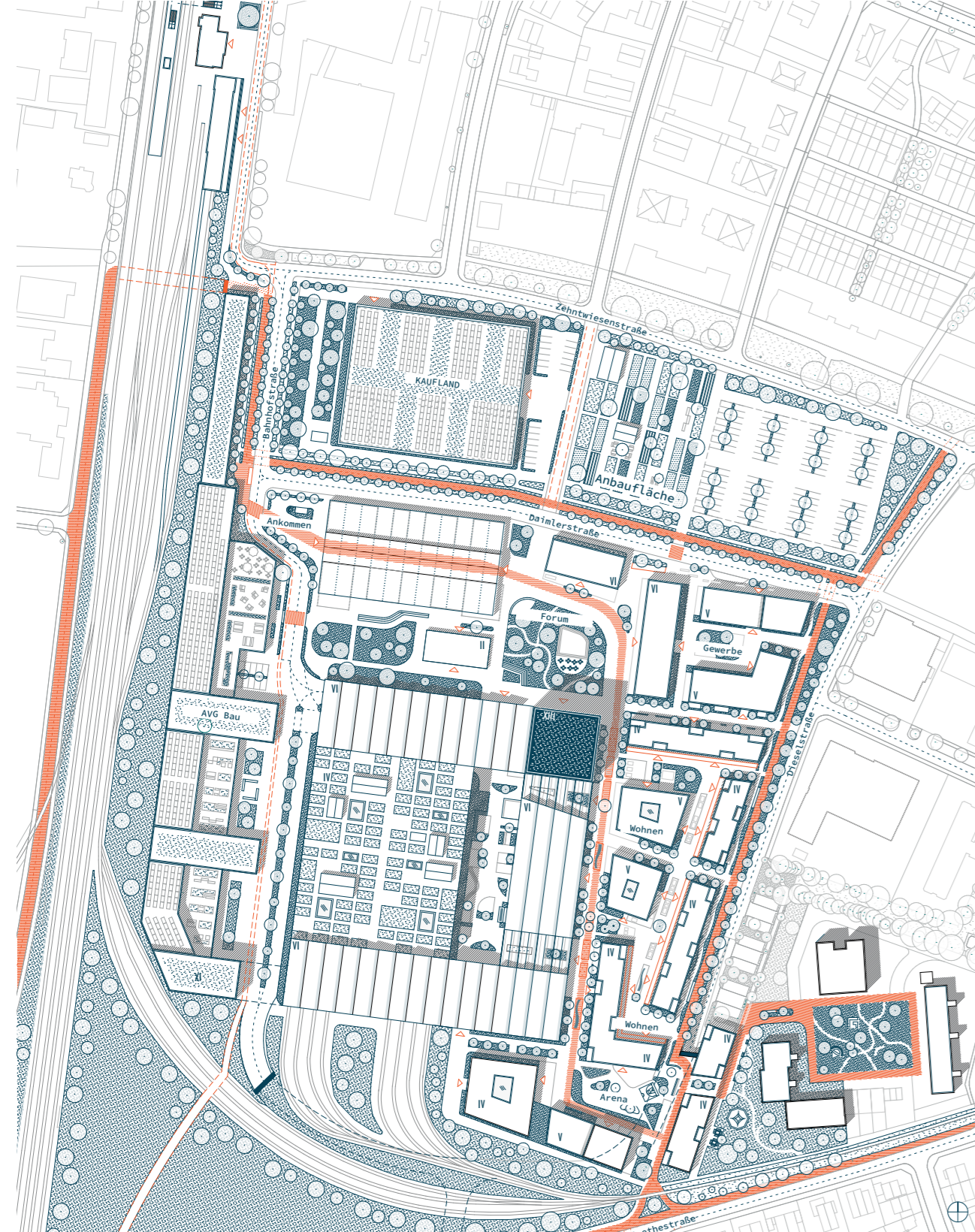
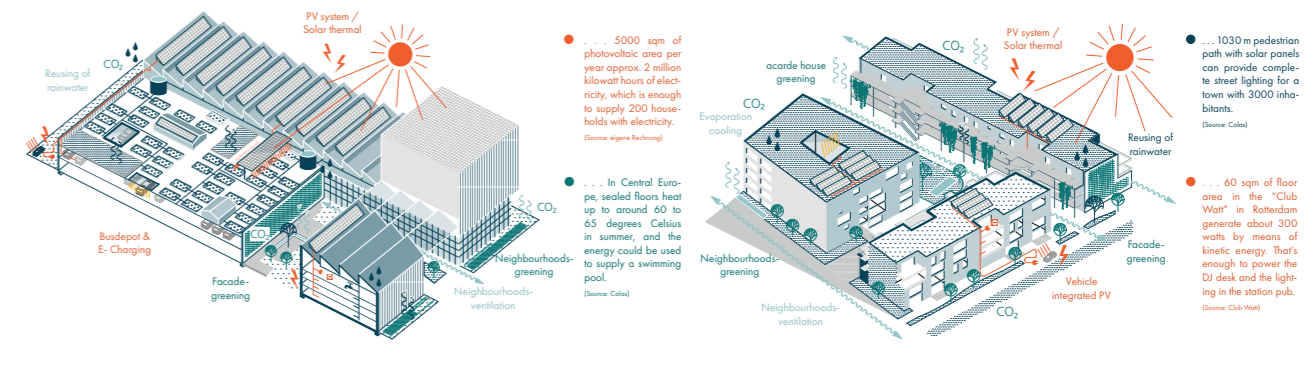
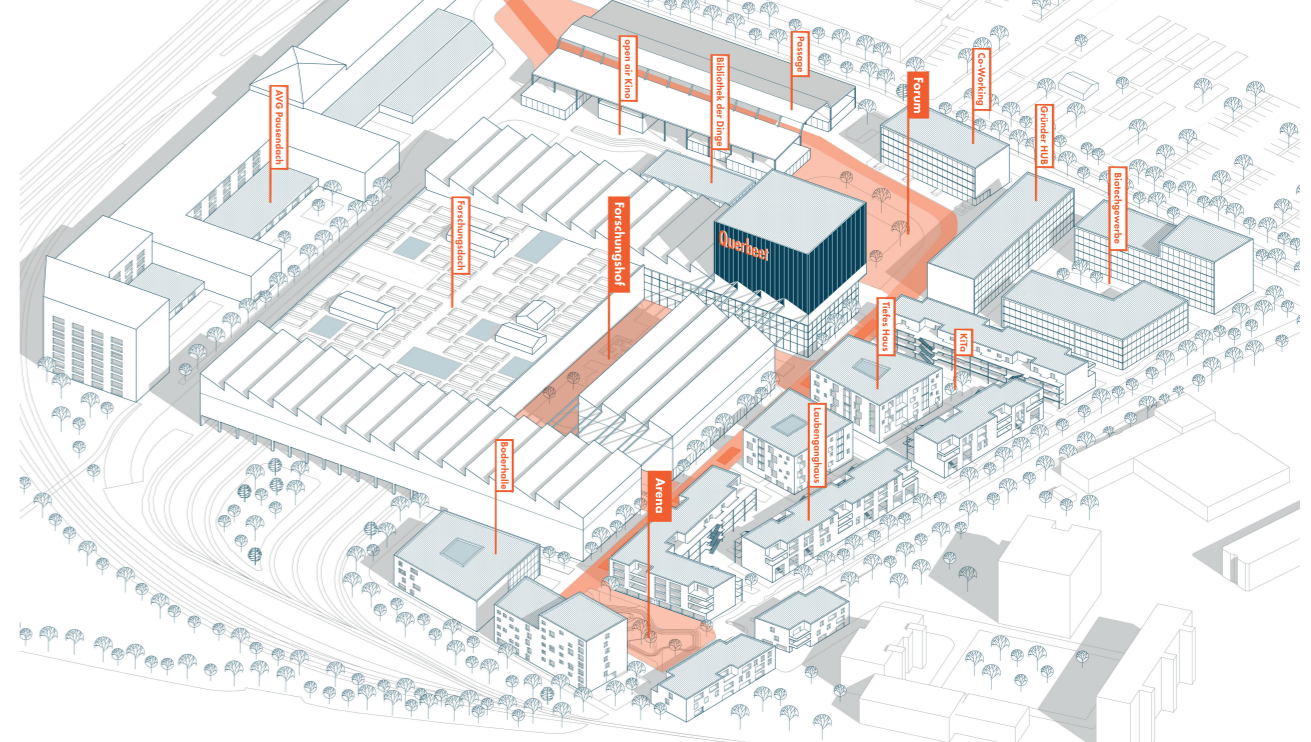
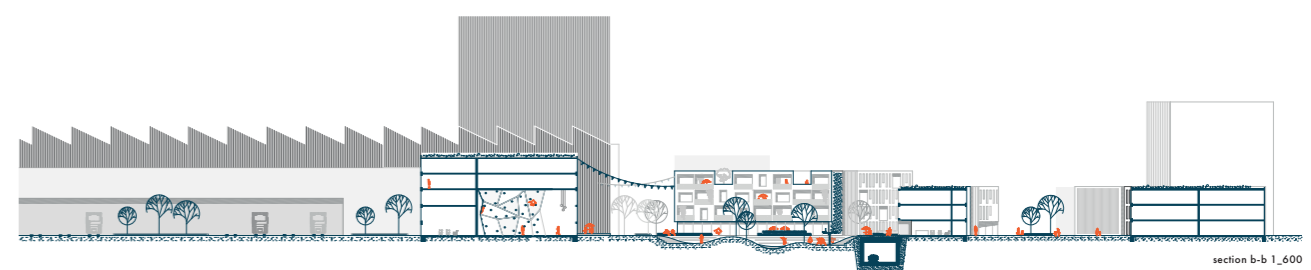
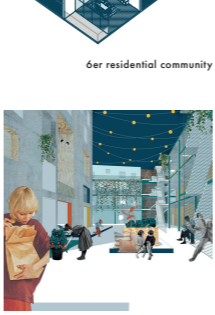
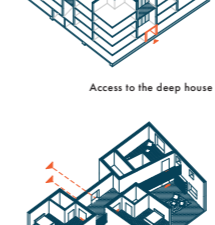
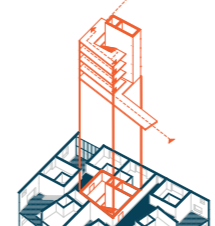
Sustainability and climate protection are the key themes of our time, on which the concept for the new ELBA site is based. A quarter will be developed, which brings together different people and aspects of the great topic of human and earth health and lives on synergies between them according to the motto "Querbeet." Overriding themes are living and working, but the heart of the district is the research campus, which deals with the production of food, energy, but also with the production and transmission of knowledge. In addition to the university, biotechnology companies also benefit from the various facilities dedicated to research.



Living in the Querbeet-Quarter is characterized by two different types of living, which allow the intermingling of different groups of residents by creating meeting spaces and communal areas. The arcade house offers in the upper floors 1-4 room apartments with cut-out loggias as a private outdoor space. The communicative cooking and dining area is oriented towards the arcade, while the bedrooms and living rooms are located in the more protected part of the apartments. On the ground floor, in addition to the communal washing, bicycle and multifunctional rooms, there are studio apartments, which extend over two floors and can also be accessed via the arcade on the 1st floor. The more private living and sleeping rooms can be found in the studio on the gallery floor, as the more public workrooms on the ground floor are oriented towards the street. The adjacent terraces offer space for exhibitions. In addition to its development functions, the wide arcade offers spacious living areas where residents can meet and exchange views.



The deep house offers space for experimental living with a focus on community. Two residential units are each spread over two floors and with their clearer floor plans allow for shared flats with up to 10 separate rooms with private bathrooms. The area between the living cubes is shared and serves for example as a kitchen, dining and living room.



Concept of urban planning

