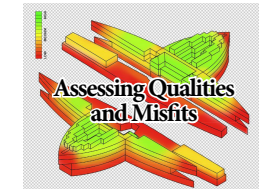


intro



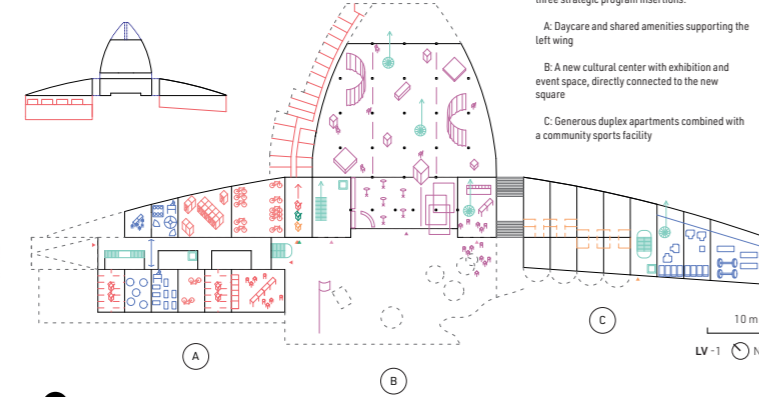
weaving the urban fabric

Through careful observation, we add, remove, and imagine layers of use and movement across the site. Thread by thread, the process reveals hidden patterns and exposes new possibilities, gradually stitching together a renewed urban narrative.



4 cuts, 2 additions

At a constructive scale, we retain most of the existing structure. With a series of precise cuts, the site becomes more accessible and porous. Each wing receives an addition to enhance new spatial qualities – two distinct stitching strategies: a twin and a plug.



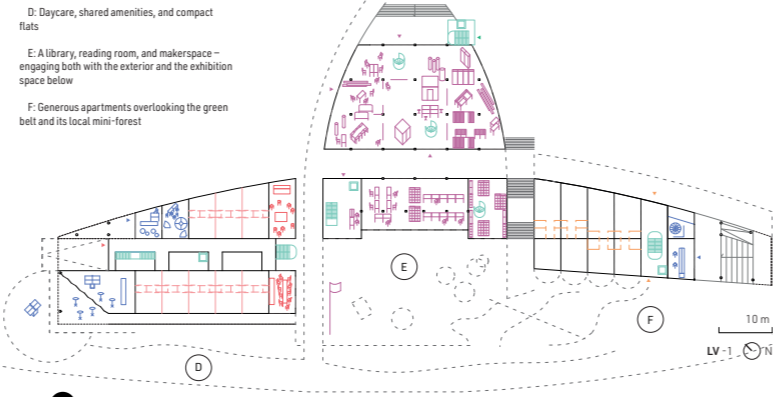
re-programming

As a softer form of intervention, we propose a phased re-programming – beginning with the currently unused central section. The refurbished areas are reactivated through three strategic program insertions:

- A: Daycare and shared amenities supporting the left wing
- B: A new cultural center with exhibition and event space, directly connected to the new square
- C: Generous duplex apartments combined with a community sports facility

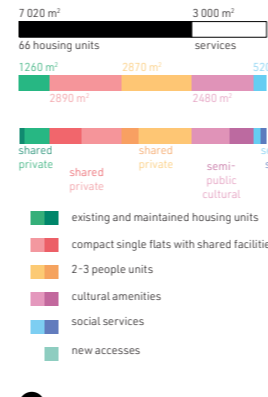
a productive city

A neighborhood-based productive axis emerges at the ground floor – open, accessible, and in equal dialogue with both the front and back of the site.



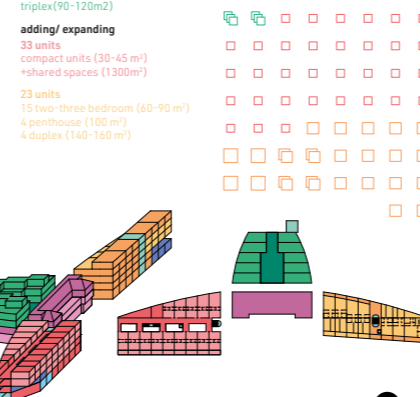
expand and diversify

total 10,020 m²
7,020 m² 3,000 m²
66 housing units 66 services
12,640 m² 2,670 m² 1,300 m²
2,970 m² 2,670 m² 2,670 m²



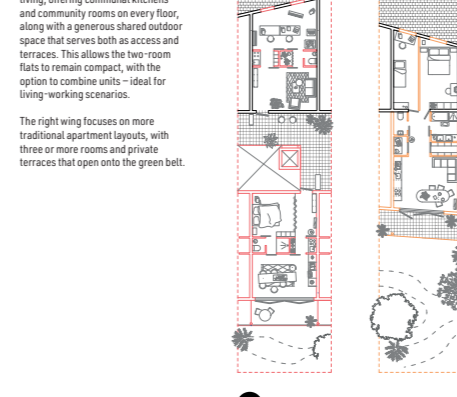
housing

The neighbourhood should stay accessible for a variety of people and household constructs.

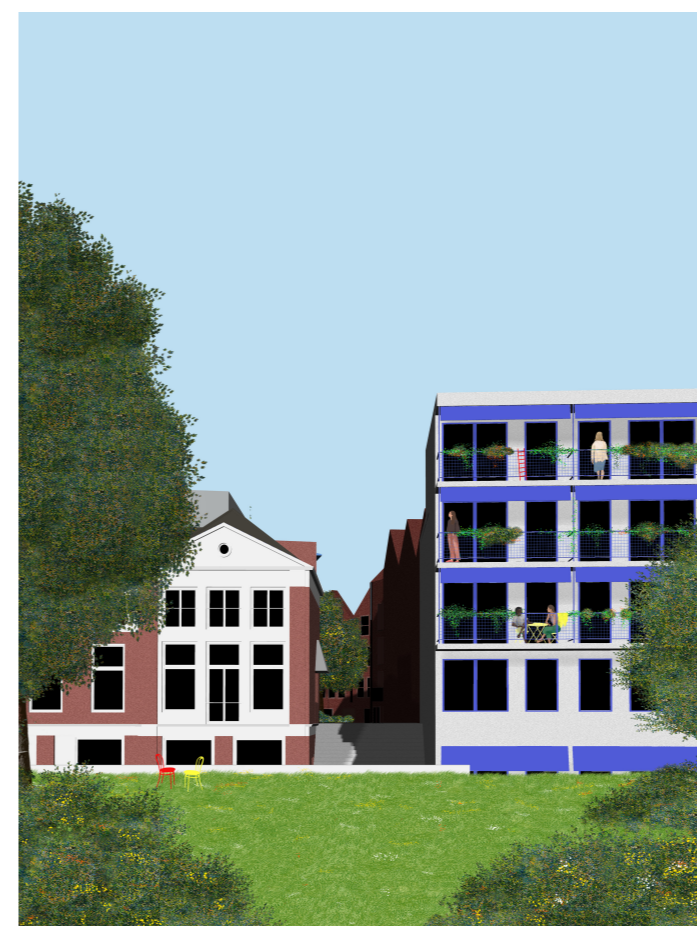
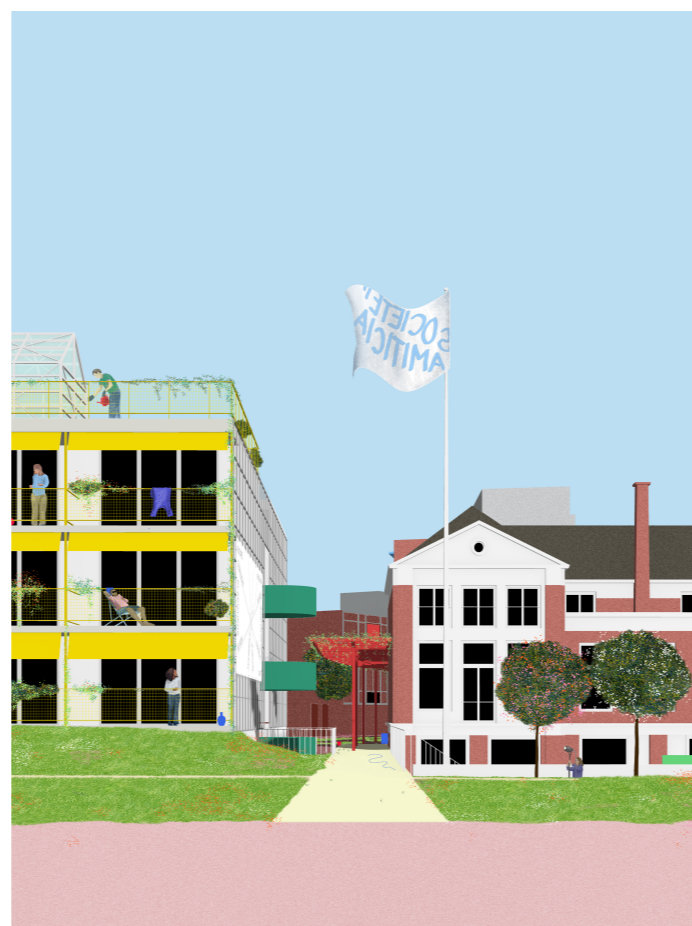
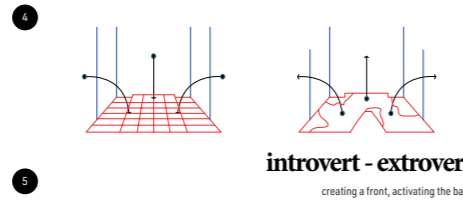
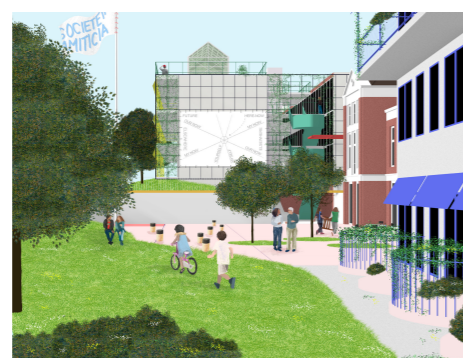


zoom in

The two additions create compact yet high-quality living conditions.

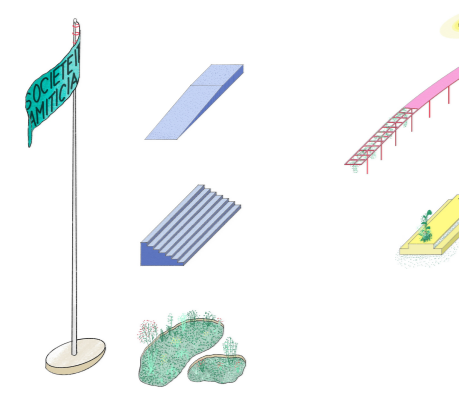


new relations as an outcome of precise interventions



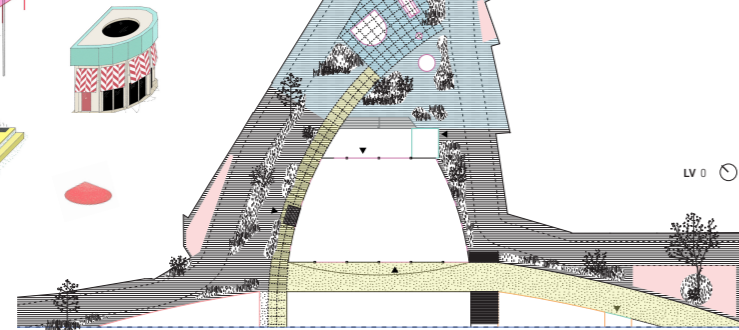
softening borders

Making the new building(s) more accessible through simple, targeted interventions, while gradually unpinning the rear to create pockets of biodiversity. Little by little, the back transforms into something new. The introduced cuts redefine how the backyard is approached – not as leftover space, but as an active, evolving landscape.



a room for the city

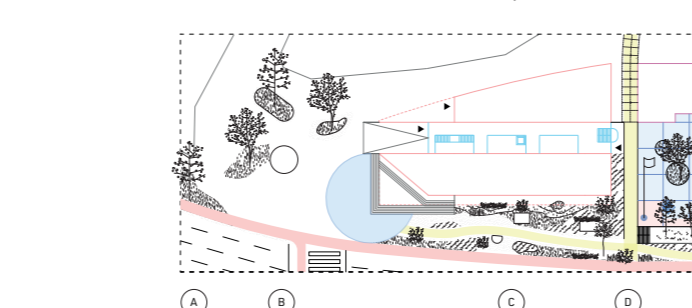
Like stepping into a new room, the transformed rear of the site is gently furnished to let the neighborhood flourish. At canopy, a look serving the community, light, and places to gather – these simple elements activate the space. The newly opened back facade strengthens the connection to the building and reinforces a cultural and productive axis across the central part.



a garden assortment

Expanding the green belt establishes new relationships between the existing and the new.

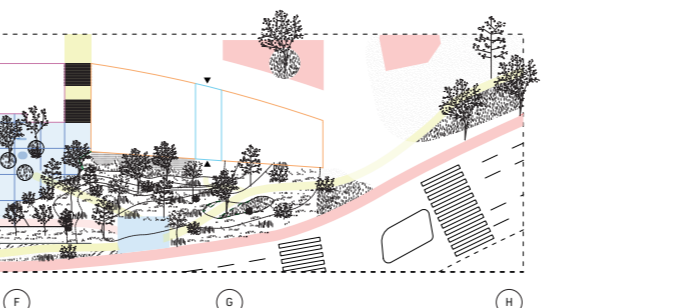
At the rear of the site, the main landscape intervention unfolds through unpinning – a quiet act that opens space for biodiversity and public life.



two distinct neighbours

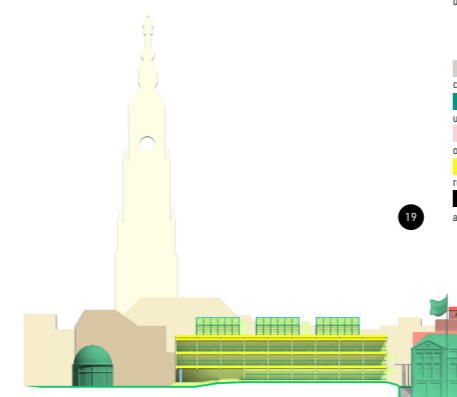
The separation of the historical building from its lateral extension allows the site to breathe, creating voids that invite passersby to explore the reshaped estate. New perspectives are introduced, fostering a better understanding of where the passerby situates themselves within the space.

Furthermore, the fragmented whole offers an opportunity to reconsider facade variations, enabling a gentler scale across the site. In response to site conditions, the two new neighboring extensions are shaped as follows: since the back of the left wing is narrow and its front deeper, the left wing extends 14 meters forward at the same height. Conversely, as the right wing's back street is deeper and its front narrower, the building extends 8 meters forward and dares to rise higher than the existing structure.



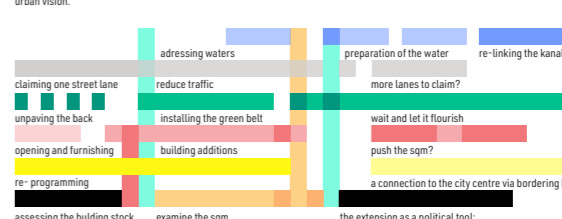
a gateway to the city

By softening edges and opening space, we create the conditions to imagine a future silhouette – one that marks the entrance to the historic city center.



phases, actors, actions and the architect as a mediator

Step by step, this development is imagined as a collaborative process between diverse actors and layered actions – some soft, some more pronounced. Rather than imposing a fixed solution, the project proposes a framework that allows for evolution over time.



outro

After working on the backside, the team is convinced that a productive framework can be established. We invite you to connect with potential partners accompanying you in shaping the new life of this fragment of the city – engaging institutions, individuals, and organizations such as nearby museums, daycare administrators, local workshops, and youth and social associations.

To foster broader perspectives – since we believe the site has the potential to gain momentum beyond its boundaries and even beyond the initial scope of reflection – the team has initiated speculative explorations that continue the project's trajectory. The approach reflects a long-term mindset, as this key role should be supported through its incremental development. Regular assessment will be essential to adapt the plan to the evolving needs of the site. Thinking further is always an option, ultimately acknowledging the site's openness for potential extensions.

