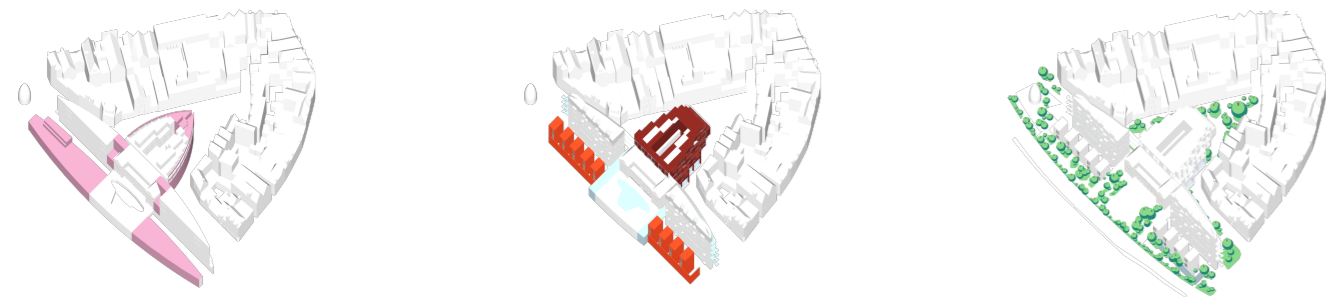


# Amicitia Exchange

Amicitia Exchange revitalizes Amersfoort's position within the Randstad, tackling high rents and the underuse of the Amicitia building. Flexible ground-floor live/work units act as incubators for startups and entrepreneurs, helping to ease the housing crisis while boosting local economic activity. By lowering the ground floor slab along the perimeter, we remove blind façades and create a more welcoming, open streetscape. Clustering diverse professionals -makers, AI developers, creatives - fosters synergy and shared innovation. Above, housing supports a broad range of residents, from families to older adults.

Our circular strategy unites environmental, social, and economic values. We extend green space around the building, introduce a public square for events, and carve new passages through the façade to activate the courtyard. The historic Amicitia structure becomes a community hub with a gym, nursery, kitchen, and library. Red-brick modular additions echo the local context and Amersfoort's city colours, while generous green areas encourage play, gathering, and exchange - transforming Amicitia into an inclusive and resilient urban landmark.



Puncture the long façade facing the Stadsring to reduce the building's scale, draw people into the courtyard, and restore prominence to the historic Amicitia building. Open up the blind rear façade to reconnect it with the surrounding context and activate the interior.

A row of small detached houses is introduced to perforate the southern façade, bringing human scale and street-level activity, while also increasing floor area. The two existing wings are topped with a lightweight timber-framed storey, featuring chamfered roofs that respond to the surrounding context. In the courtyard, perforated modules are supported by new perimeter columns to create an open, welcoming façade. Cantilevers and balconies animate the edge, offering moments for informal interaction and social exchange.

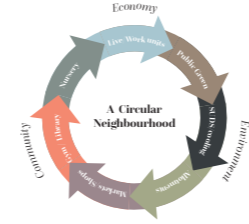
A variety of planters and trees are introduced at the front and rear of the site, incorporating a mix of native and climate-resilient species to boost biodiversity, support sustainable urban drainage (SuDS), and mitigate the urban heat island effect. On the first and second floors, community allotments provide space for residents and the café below to grow their own herbs and produce, fostering local food networks and shared stewardship of green space.



- Live Work units (Makers)
- Live Work units (Tech start ups)
- Live Work units (Co-working)
- Live Work units (Gyms & social entrepreneurs)
- Live Work units (Hybrid residents)
- House Type 1 (2 bed)
- Public Square for markets events
- Planters with trees & seating
- Café-restaurant
- Community Hub entrance
- Library
- Function Meeting rooms
- Kitchens
- Rear courtyard

0m 5 10 20 30 40 50m

# Amicitia Exchange



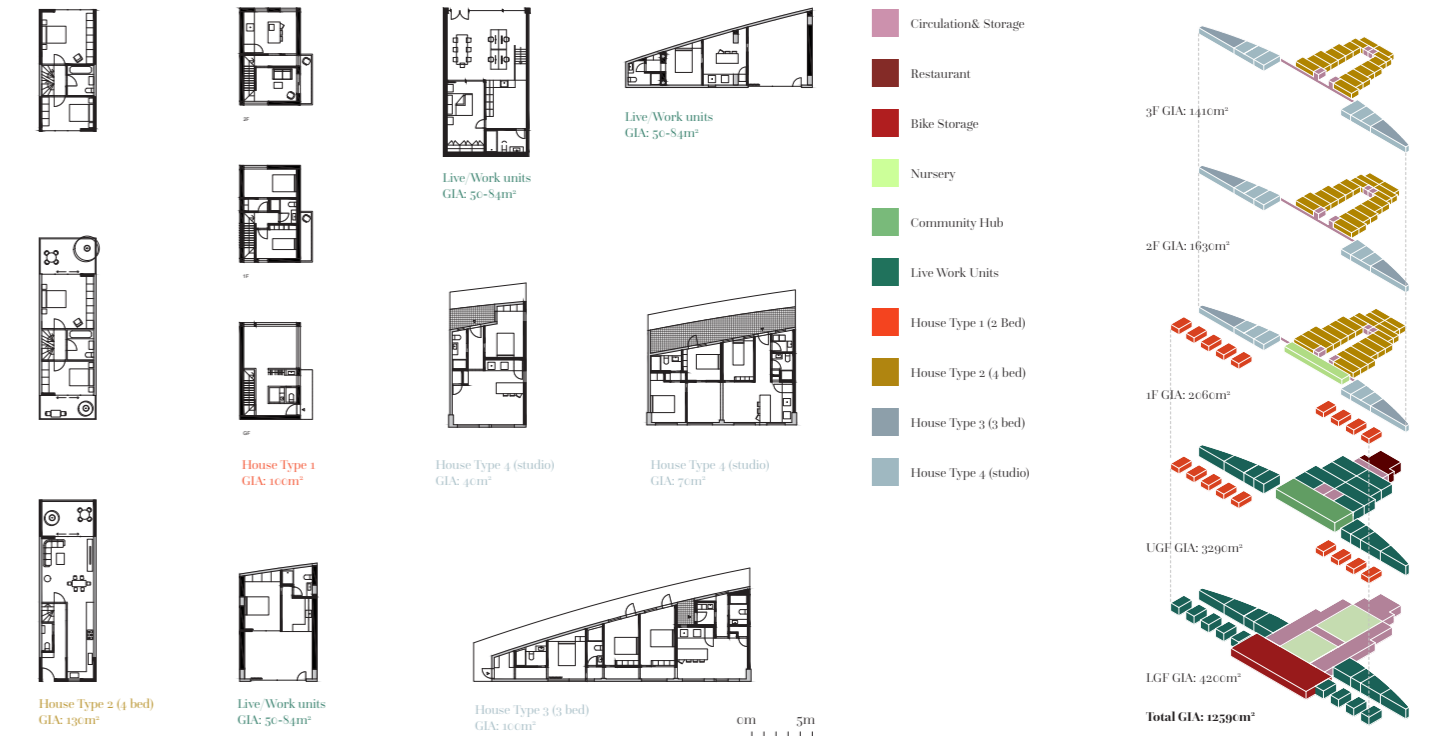
Our proposal embraces circularity by linking community, economy, and environment through shared spaces and resources. A nursery supports working parents living on site, while a library and gym promote health and learning. Community allotments on upper terraces supply fresh produce to the restaurant below, creating a hyper-local food loop. Markets in the public square offer makers and growers a platform to trade. Modular construction reduces waste and allows for future reuse or adaptation. These interwoven systems promote resilience, reduce emissions, and foster a culture of care and exchange.

- Live Work units (Between kitchen)
- Bedroom and communal storage
- Co-working space
- Community allotments
- Kitchen
- Solar panels
- Nursery
- Library
- Bicycle storage
- Carbox rooms (2pm)
- Weight room (2pm)
- Aerobics/sports room
- Planters with trees & seating
- Café-restaurant
- Oxygen



Section A-A @ 1:200 0m 50m

# Amicitia Exchange



Above: view from Stadsring towards market square. Below left & middle, House type 1 (2 bed). Below right: Community allotments

