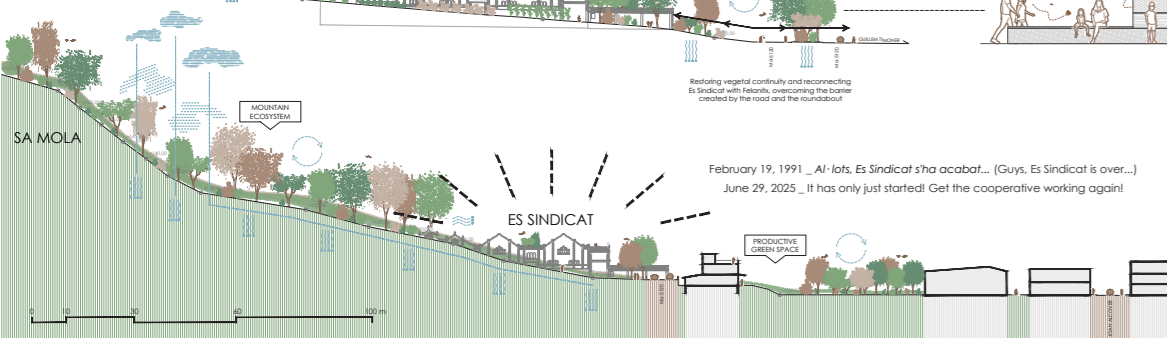
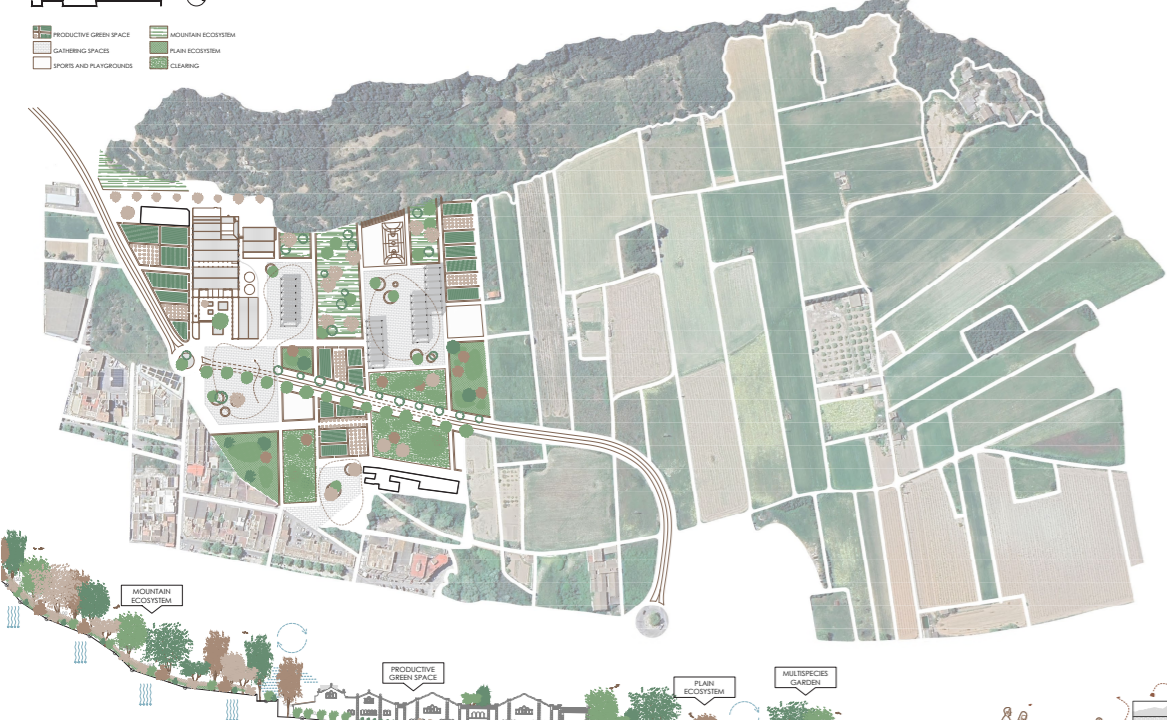
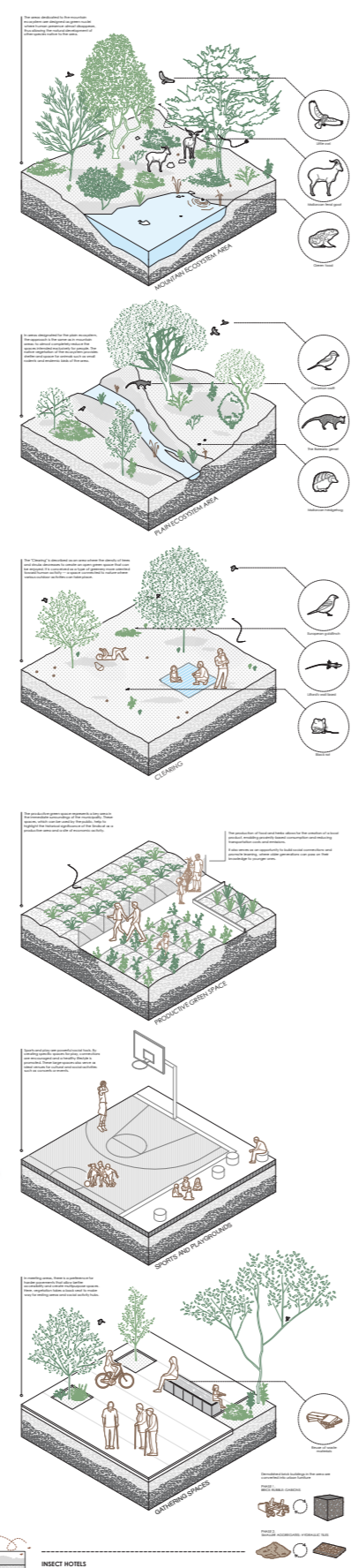
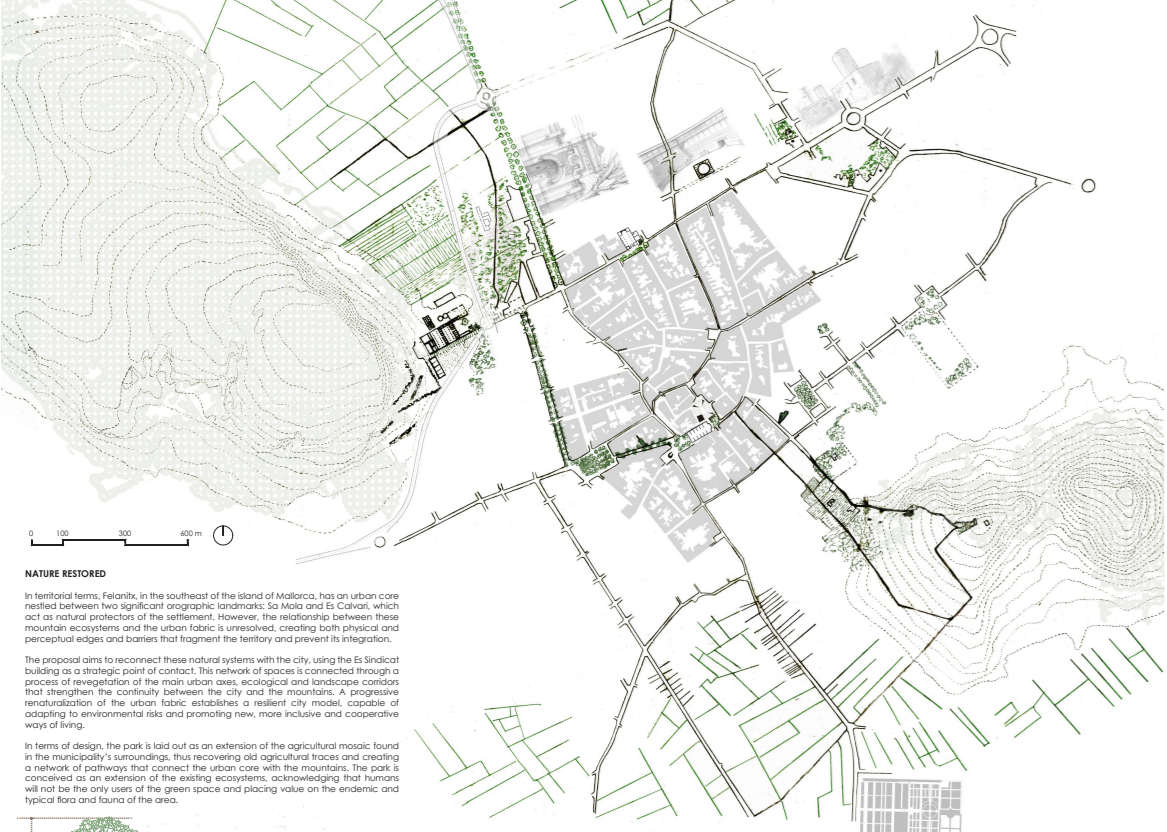


Felanitx - Es Sindicat (ES)

Cooperative heritage reborn, nature restored

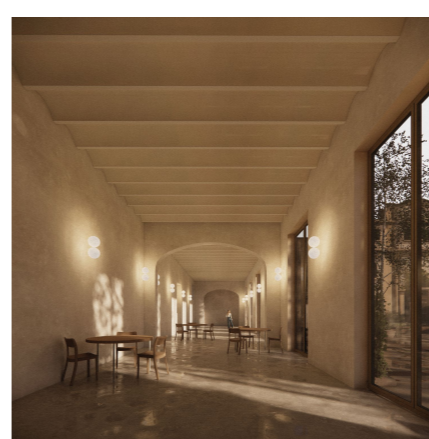
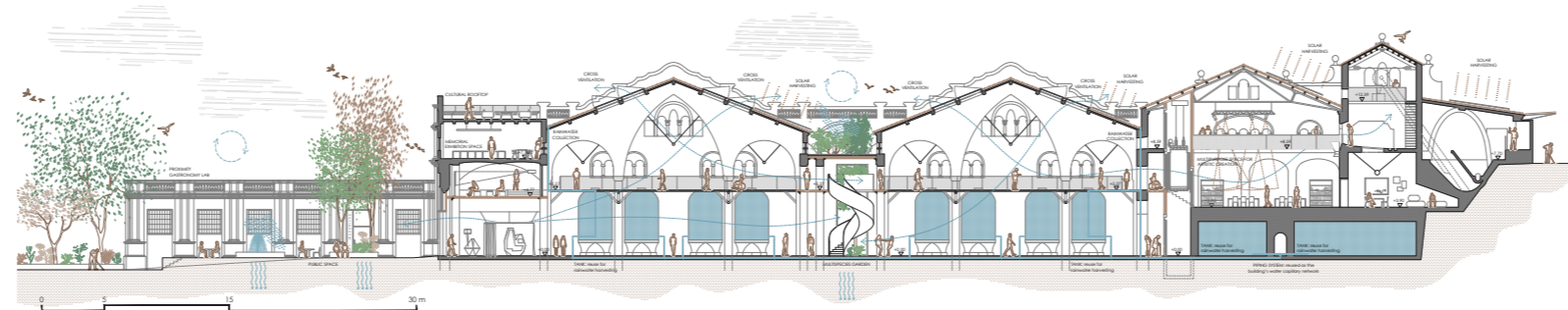
1



Felanitx - Es Sindicat (ES)

Cooperative heritage reborn, nature restored

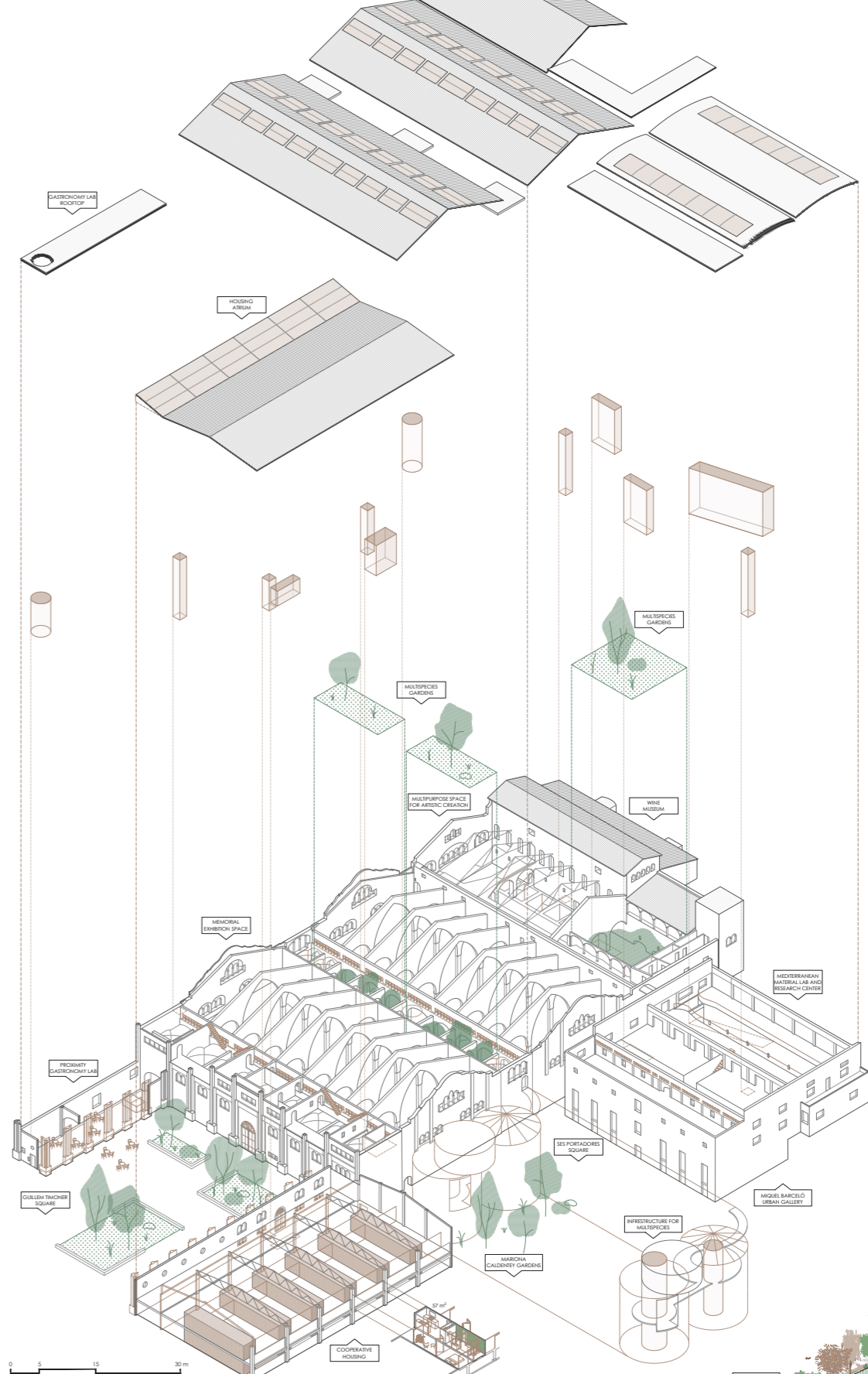
2



Felanitx - Es Sindicat (ES)

Cooperative heritage reborn, nature restored

3



COOPERATIVE HERITAGE REBORN
The recovery of the industrial building of Es Sindicat, despite its high heritage value and the need to preserve its constructive features, physical characteristics, and iconic image, is understood from a contemporary perspective. The word "rehabilitation" is given the meaning of restoring the capacity to be inhabited, sacrificing an obsolete industrial container by endowing it once again with life, activity, and life.

In this sense, the intervention does not aim to freeze the building in time. Rather, with the utmost respect for the existing structure and the value it represents in the collective memory of the workers, it seeks to adapt it and make it a social emblem, both for Felanitx and for the island of Mallorca. The proposal advocates for a program that preserves reminiscences of the original use linked to production, while incorporating new uses that position Es Sindicat as a cultural and artistic creation hub.

MAIN BUILDING: In the upper level, a museum space is proposed and, on the lower level, the large open hall is designed as a multipurpose space for artistic creation. The route continues toward the two fermentation halls that complete the main body, with a system of walkways running along the upper part of the roof. Two large green spaces are created, allowing natural light to enter and improving indoor environmental quality. The body located on the roof facade is transformed into a large garden that circulates in a zig-zag pattern, following the main building's structure. The small hall closing the square space is conceived as the end of the exhibition and cultural route. It houses a Thierry Gauthier Lab.

LAGUNA BUILDING: This volume will house the Mediterranean Materials Lab and Research Center, a reference space for research on local materials and construction techniques. It will include work areas and specialized laboratories, such as the First Clay and the Laboratories, Metals and Living Stone Laboratories, Mediterranean Fine Studio, as well as Heritage Labs, Classrooms.

TANKS AND WAREHOUSE BUILDING: The two large tanks are modified with the incorporation of vertical circulation cores, as well as elevated walkways that allow visitors to explore a multi-species universe of birds, insects, and native fauna, while reconnecting with the walkway levels of the central hall. The warehouse hall is converted into cooperative housing, intended both for temporary stays for resident artists and for public housing for the population of Felanitx.

