

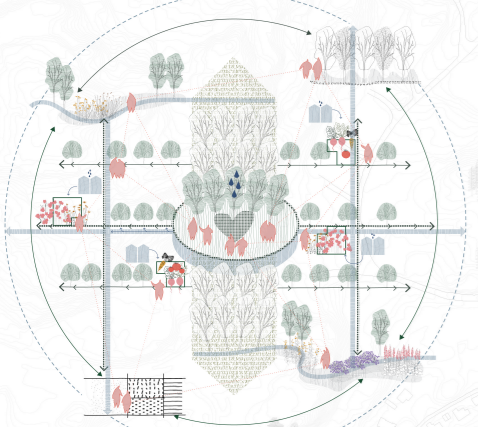
# Levanger (NO)

## Seednergies

Levanger town nests between Levangerlandet and Levangerelva, offering abundant potential for open spaces. The town almost remains untouched since the historical town plan, with the park axis running from the sundet to the river. On the other hand, the industrial activities along the sundet and the increasing use of the private car have diminished the quality of the public space, turning some potential open spaces into areas for storage or car parking.

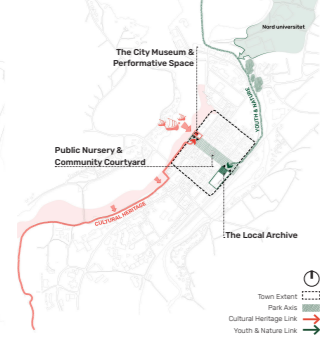
Overlying by the theme of metabolic and inclusive vitalities, approaching Levanger, the big questions we asked ourselves - as urbanists, landscape architects and architects are: what are these changes made for, what will continue to grow with the town as it evolves? It is the people and the community. A strategy developed for Levanger should be well-considered and fabricated to suit its character, to acknowledge the community and the long-standing cultural heritage and nature. We understand that to achieve a viable scheme, it needs to be the people who shape their living environment, and our job is to provide a tool and a framework for the community to work with.

The concept of "Seednergies" aims to build a comprehensive process to inform the future development of Levanger and its town centre, driven by the community and expandable to become their way of life. It celebrates the stewardship between Levanger Kommune, Nord University, and the community as a meaningful way to bring people together. The unique metabolism of Levanger features a public nursery as the heart of the process. This introduces a new concept of a meeting place that unifies the community, and further enhances the relationship with its cultures and biodiversities. Located at the centre of the park axis, the public nursery gives this historic open space structure another value to the communities - a constant growing substance. The public nursery, supported by the new seed bank research centre located inside the new library, means to be an energy generator of the metabolism process. This energy does not limit to plants, but it is also the biodiversity, social interaction and exchange culture. This, in turn, creates a diverse scale of public spaces, eventually amplifying the quality of public life in Levanger.



### Urban Strategic Framework

**Big Characters**  
The scheme re-connects the Sundet and Levangerelva through the Park Axis, creating a continuous foot-connection for pedestrians and cyclists from Colbjørn to the Haven development. The park naturally links the sundet walk and the river walk to the town centre. The park is defined by the two urban anchors - the Museum with an extension toward Sjøgata, and the new Library and Research Centre precinct that includes the Levanger Station.



### Street Hierarchy

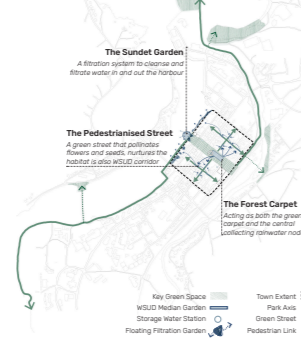
Framed by the sundet, the rail, Sundagata and Hobergs Gate a foot-perimeter block is defined as a slow precinct (limited 40km/h) on all streets, giving access to service vehicles, and strictly excluding private car access.

Håkon den Gode's gate, Sverres gate, Hobergs gate, Tollugata and Torgata are fully pedestrianised. Kirkegata remains as a key traffic corridor. Sjøgata is reserved as a permanent address for festival markets with only allowance for service access.



### Blue-Green Grid

A blue-green grid is integrated into the Levanger town and expanded to the adjacent site through the Levangerlandet and Levangerelva routes, connecting key open spaces. Pedestrianised streets form the blue-green corridors diverging from the park axis. The sundet garden at the harbour front serves as a filtration system to increase the water quality.



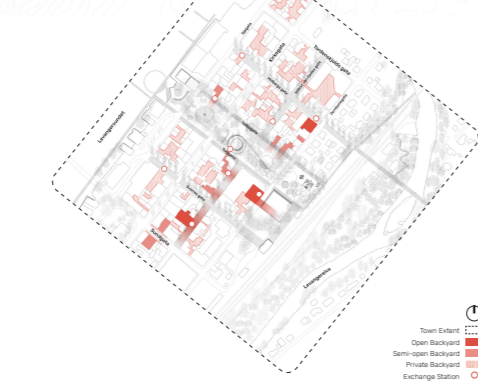
### Implementation Process

- Stage 1:** Defining foot-perimeter zone. Redesigning the park axis and the 2 anchor buildings - the local archive & the city museum. Rolling out the framework of 5 backyard spaces as community initiatives.
- Stage 2:** Initiating the construction of the two walks along Levangerlandet and Levangerelva. Expanding civic connection to Levanger station.
- Stage 3:** Intensifying Levanger town with pedestrianisation strategy and private car restriction. Launching the public bus system.



### Town Centre Strategies

**3 Backyard Typologies**  
Empty lots and backyards are divided into a hierarchical system as part of the overall metabolism.



### Street & Activation Strategy

Intensification and activation strategy is differentiated in relation to the street character, either active frontage on traffic road or place making with adaptive structures on pedestrianised street.



# Levanger (NO)

## The Local Archive

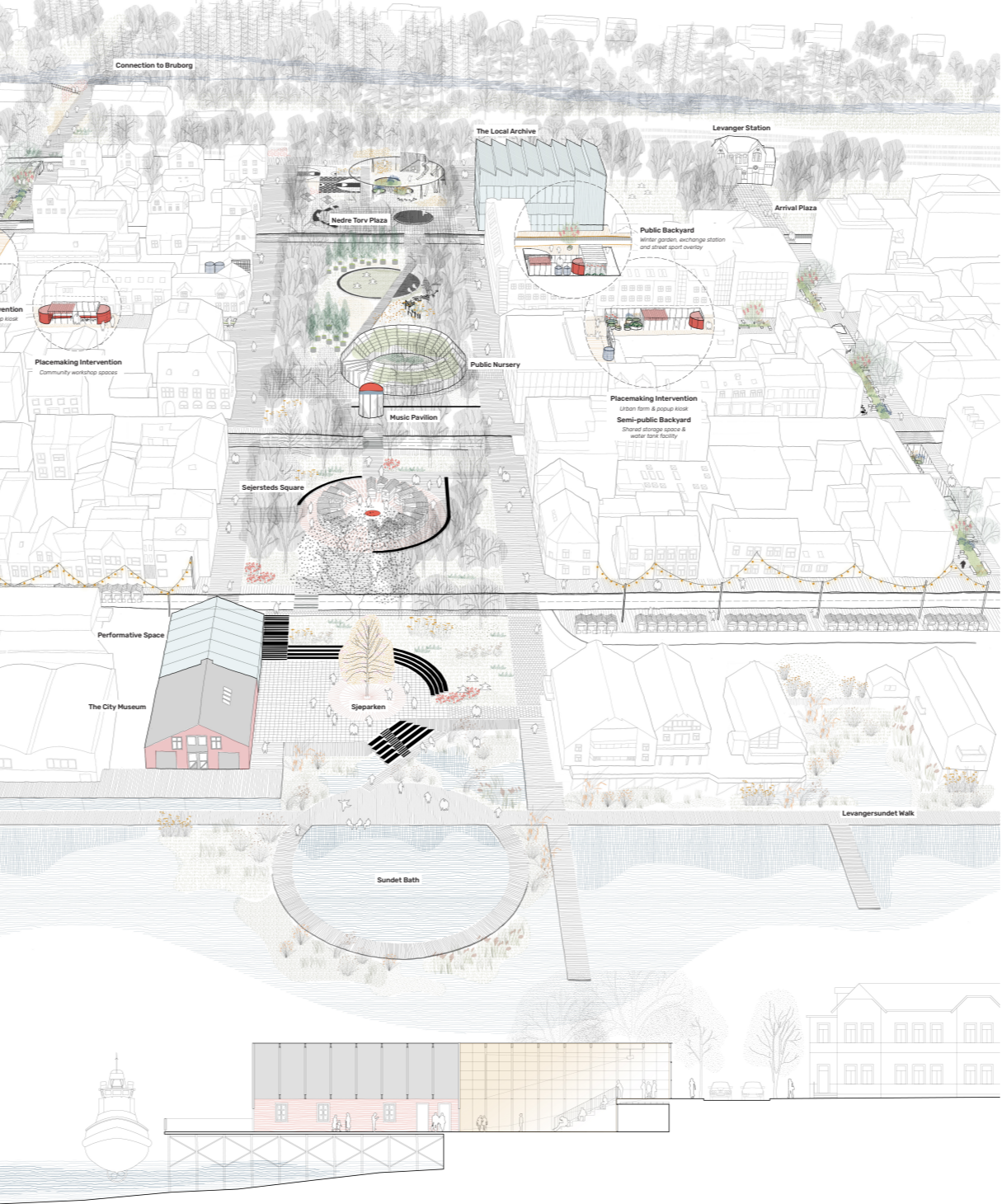
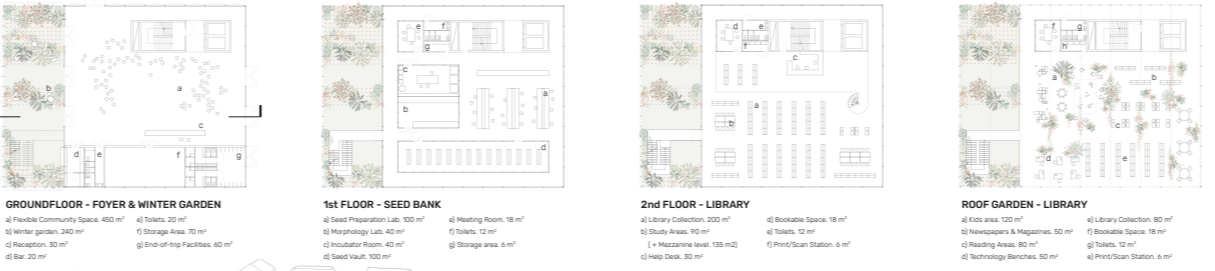
Located at the southern edge of the park axis, the library and research centre aims to be a new urban landmark for the city of Levanger. A square box with large structural spans housing both programs allows for flexibility of uses in the future. The ground floor becomes a multipurpose space that could be occupied for public events and community activities such as exhibitions, talks, book presentations, etc. A staircase containing the staircase lifts, and public toilets, gives access to the upper floor levels. The end-of-trip facilities facing the street will be used by commuters arriving by bicycle, therefore embracing the use of the building as an intermodal station.

The first floor contains the seed bank research center, which includes new laboratory premises for the study and analysis of seeds, and also a series of box rooms with the required mechanical systems for the growing and archival of these seeds. The seed bank is operated in partnership with Nord University, incorporating academic research and knowledge into the metabolism process.

The main climatised library space is located in the second storey. A double-height space, bringing natural light to the interior of the library, contains the main depository of books, as well as working areas, group meeting rooms, and a mezzanine level with a study area.

The program of the library is extended to the rooftop, where a greenhouse-like space allows for spaces of casual reading and a play area for kids in more direct contact with the exterior. The greenhouse is situated around the southern facade and roof provides a natural climatic control of the building across the year. This space acts as a passive solar heater, allowing nature to colonize its interior through a vertical indoor garden facing the station square.

The proposal acknowledges the crucial role that contemporary libraries play in the cultural life of a city; originally used as a space for archival and consultation of books, today this public equipment has been hybridised with other types of programs in order to provide a broader service to the community.



### The City Museum & Performative Space

A similar approach is used at the opposite edge of the park axis. The extension of the existing Museum is made with a lightweight structure that doubles the area of the existing timber shed and connects the end of the boulevard with the lower height of the waterfront. Keeping the traditional pitch-roof logic of the buildings facing the water, this new urban room is understood as an entry for the heritage building but also as a container of temporary larger programs such as cinema, theatre, or other performative arts.

The extension also incorporates a service core integrated with the terrain, which provides the space with storage areas and other services rooms. In order to facilitate the different types of uses across the year, on the other side, the heritage timber shed contains a new museum program that will explain the history of Levanger, reinforcing the relevance of its harbor industry and relationship with Levangerlandet from its origins until today.

# Levanger (NO)

# Levanger (NO)

