

TOPIC 4

**COMMON RESSOURCES
AND MUTATION**

SCENARIO 1

WIEN GOES 22nd

**EUROPAN EUROPE + EUROPAN AUSTRIA + CITY OF VIENNA
+ WINNING TEAMS EUROPAN 11**

TOPIC 4 – COMMON RESOURCES AND MUTATION

BERRESGASSE

The issue of finite natural resources introduces the concept of scarcity and, therefore, of its value: resources have always been at the heart of the concerns of civilizations in search of an optimum ratio with nature. With the global ecological crisis it is essential that designers develop detailed knowledge and problematize the natural elements and take them into account in the urban project on different scales, treating them as common resources not only to preserve, but also to create an hybridity compatible between city and nature. This session of European marks the growing role of nature in the design of urban projects, and the consideration of natural elements (biotic, abiotic) becomes better, more complex, in order to be the founding elements of the project.

The site in Vienna on this topic is BERRESGASSE AREA. Intervieving the natural resources of flowerfields and a waterbath with a new dense housing district.

With Winners of
Romainmôtier (CH), Porvoo (FI)
And Runners-up of
Almere (NL), Guimarães (PT), Ibbenbüren (DE), Leeuwarden (NL), Linz (AT), Reims (FR), Sambreville (BE), Selb (DE), Stains (FR)

Coach: Thomas NOUAILLER, architect, Paris (FR)

TOPIC 4 – COMMON RESOURCES AND MUTATION

INTRODUCTION

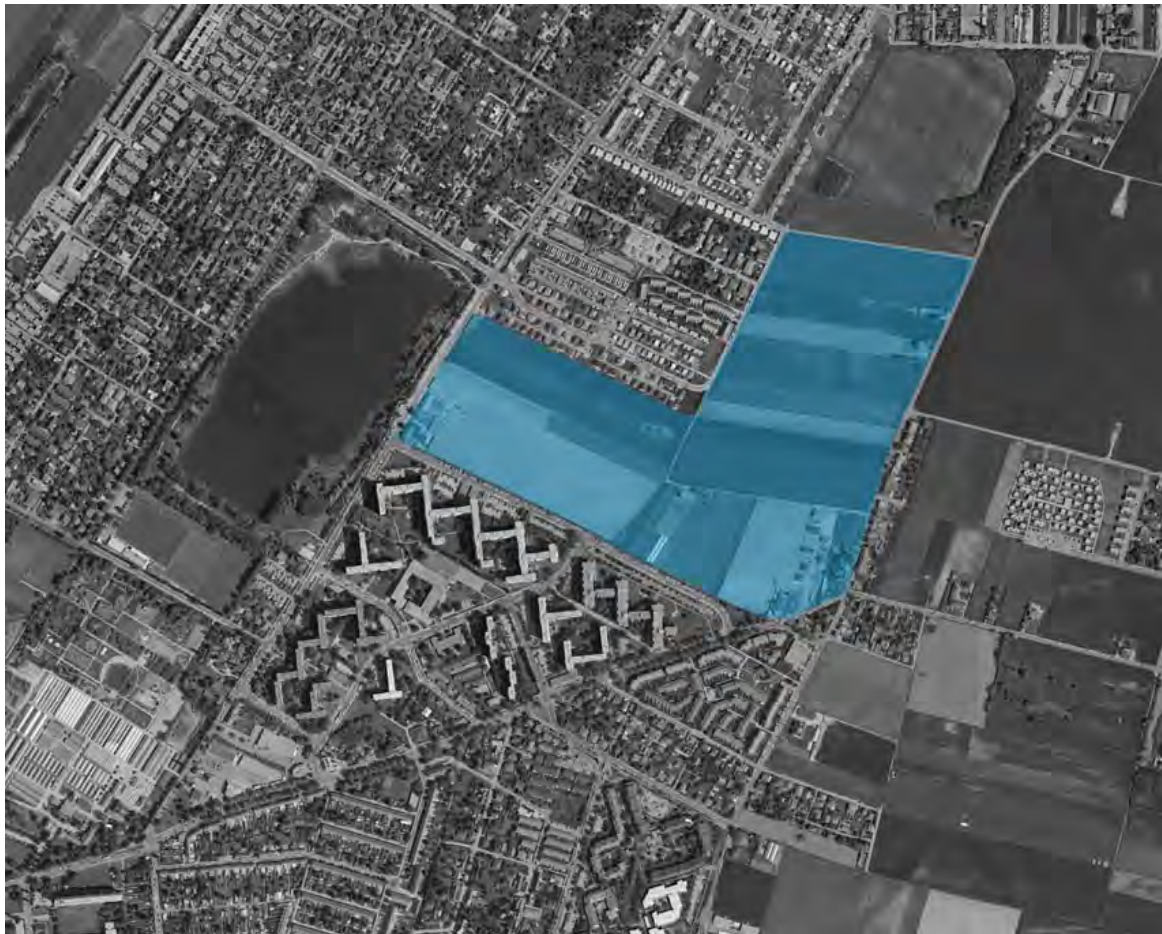
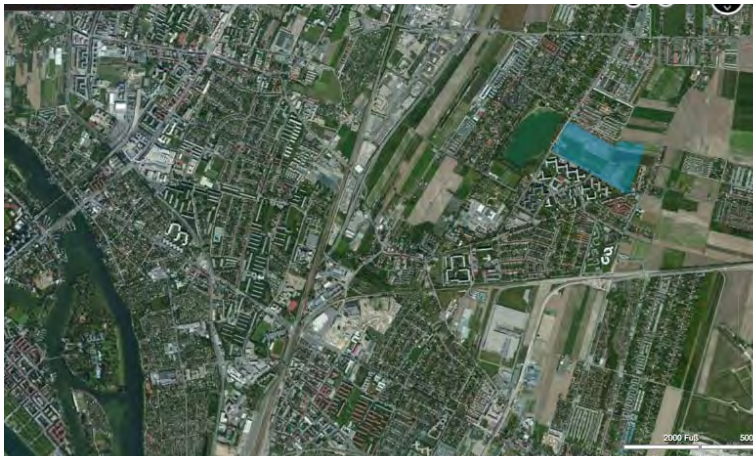
The Berresgasse site led to two different schemes. Both deal with sharing communal resources. The two scenarios are situated within the radial development project of the city of Vienna. They are supported by the major mobility axes of North-Eastern Vienna and question the future of the city fringes.

The first scenario, WIEN GOES 22ND, submits a development figure that holds up a landscape shared by the different existing centralities. Located in-between two axes of the city development project, the scheme doesn't aim at filling this empty space but at creating a new kind of connection between places that are already inhabited. The project expresses this principle by creating an inhabited humid environment in which the water of the ponds and the ditches interact with the agricultural ground and the new dwellings. The existing empty space becomes an enriched system where each resource interacts with the next. The buildings come to delineate the city fringe as well as the limit of the existing voids. The built reticulated pattern maximizes the interactions between the dwellings and this rich humid environment, while at the same time offering new links between the various centralities all around the site.

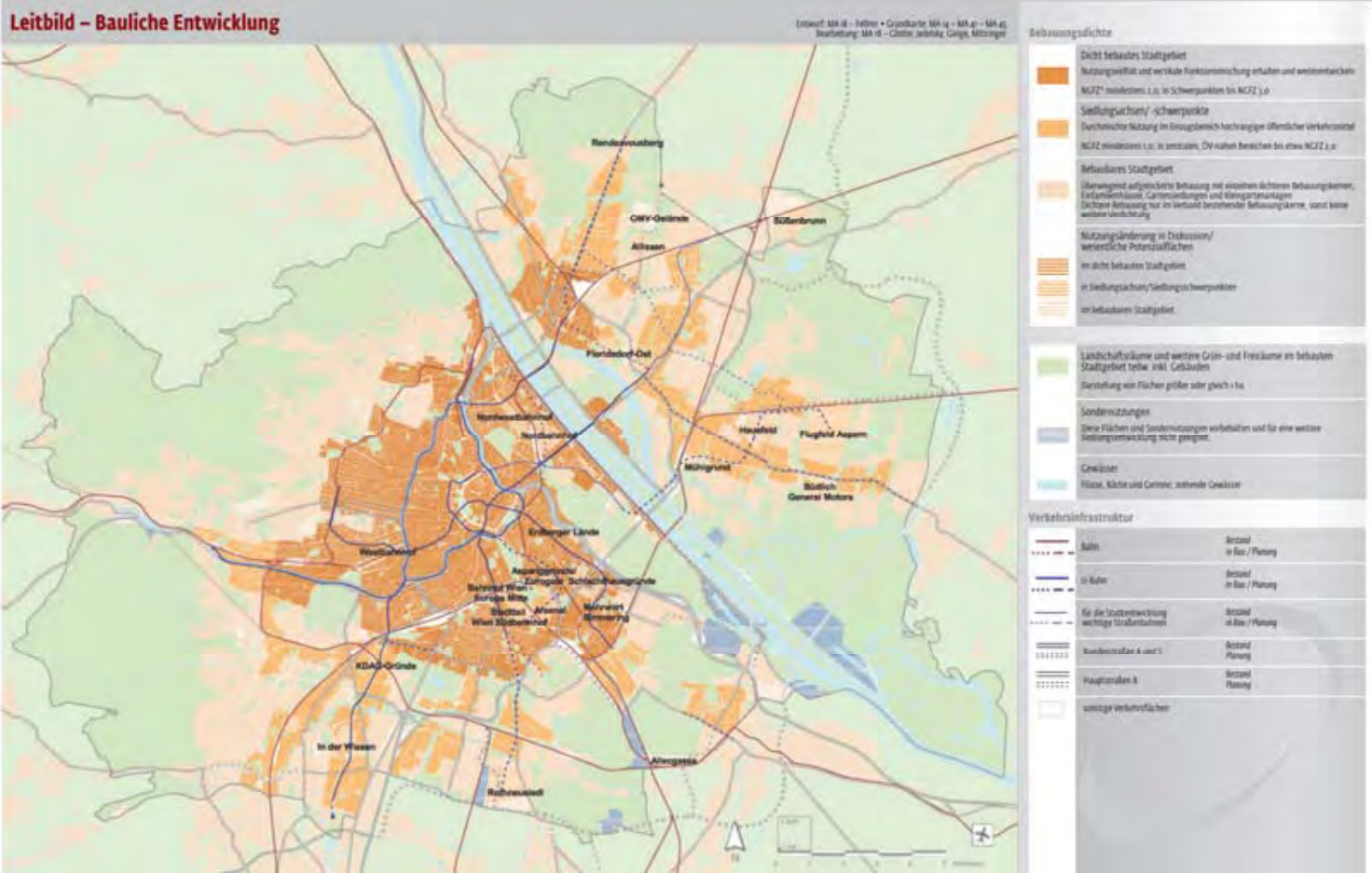
The second scenario, PRODUCTIVE COLLECTIVE LANDSCAPE, is based on drawing a ground pattern that gives a certain thickness to the edge of the city. This border, by reducing the need for new public roads, optimizes the existing public road network to the maximum. The organisation of the plan generated through this pattern preserves the agricultural landscape as a communal resource. It also creates new connections along the fringes of the residential areas through a permeable system (domestic appropriation of the public space, temporary or evolving uses, new paths, new spaces for local production or for leisure ...). The project offers to share a mutual horizon in a system that can be set up gradually, the pieces scattered but still consistent. Thus it offers to achieve both urban concentration and agricultural intensification: a true urban agriculture.

Thomas Nouailler

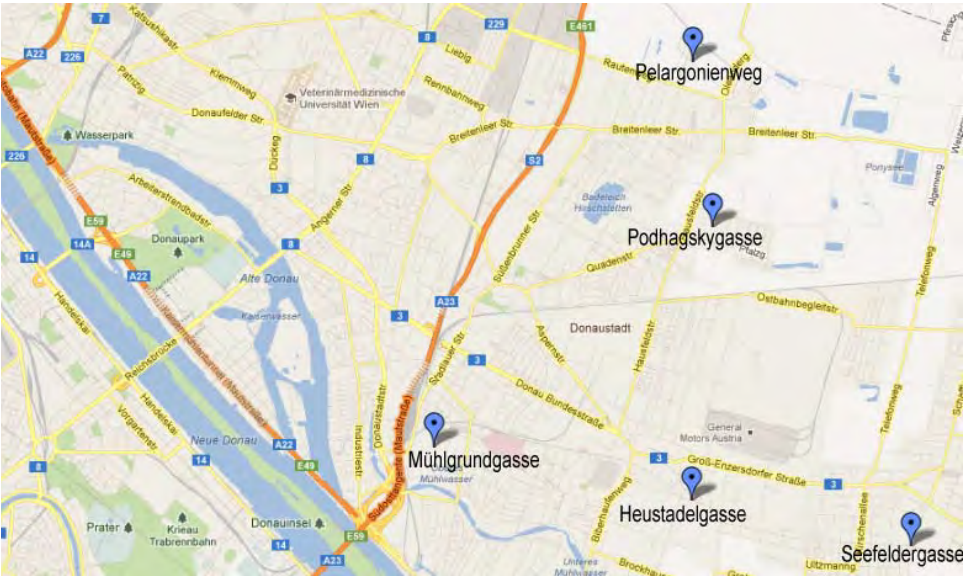
BERRESGASSE AREA



BERRESGASSE AREA : Overall concept for urban development



Projects and mobility

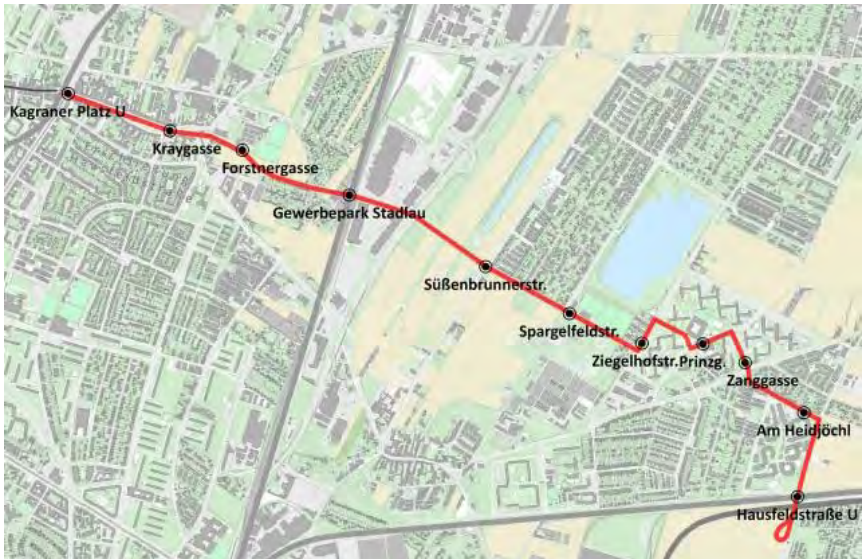


U2 line



Target area U2 Donaustadt – Flugfeld Aspern , STEP05

Tramway



Flower garden and ponds



Blumengärten Hirschstetten (flower gardens)



Badeteich Hirschstetten (swimming pond)



Vienna bathing culture 1910

TOPIC 4 – COMMON RESOURCES AND MUTATION

SCENARIO 1: **WIEN GOES 22ND**

Leonardo Zuccaro MARCHI, Alexa BODAMMER, Tanguy MALLIER, Claire KLINGER, Aude MERMIER,
Giovanni SANTINI, Alessandra RAMPAZZO, Gian Luca ZOLI, Marcello GALIOTTO, Valterri HEINONEN

Aude Mermier
Alessandra Rampazzo
Gian Luca Zoli
Leonardo Zuccaro Marchi
Giovanni Santini
Valtteri Heinonen
Alexa Bodammer
Tanguy Mallier
Claire Klinger



WIEN GOES 22ND

E 11 Forum of Results - May, 18th
COMMON RESOURCES AND MUTATION 97

**LOW DENSITY SPRAWL
ON A BIG SCALE**



**STRATEGIC
V O I D**

for a development scenario

1.000 - 3.000 PEOPLE GROWTH ¹⁹⁸

WATER PONDS

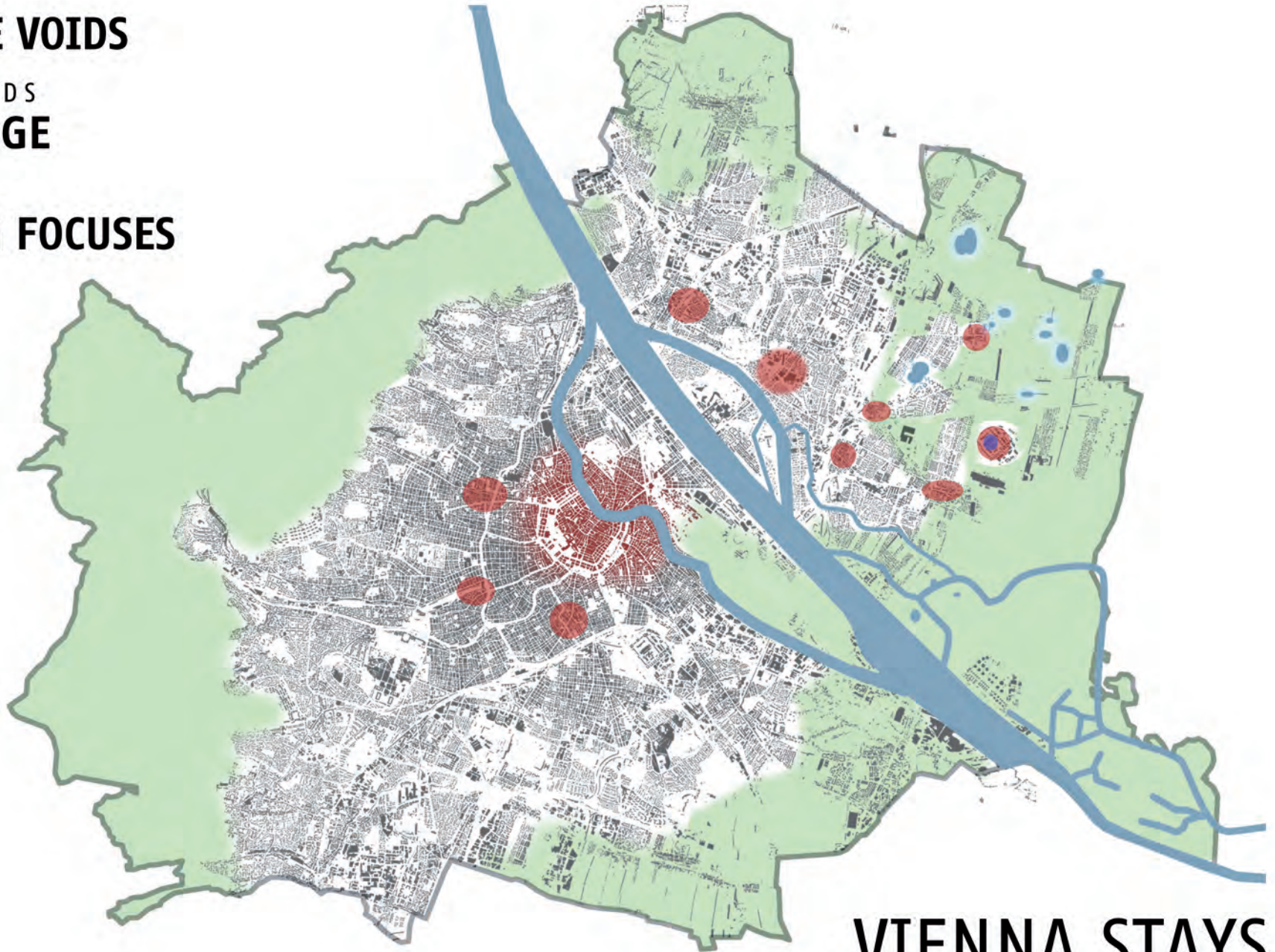
QUALITATIVE VOIDS

CULTIVATED LANDS

URBAN FRINGE

URBAN CENTERS

CONNECTING FOCUSES



**VIENNA STAYS
DANUBE CITY**

o p p o s i n g s p r a w l | 199

WATER PONDS

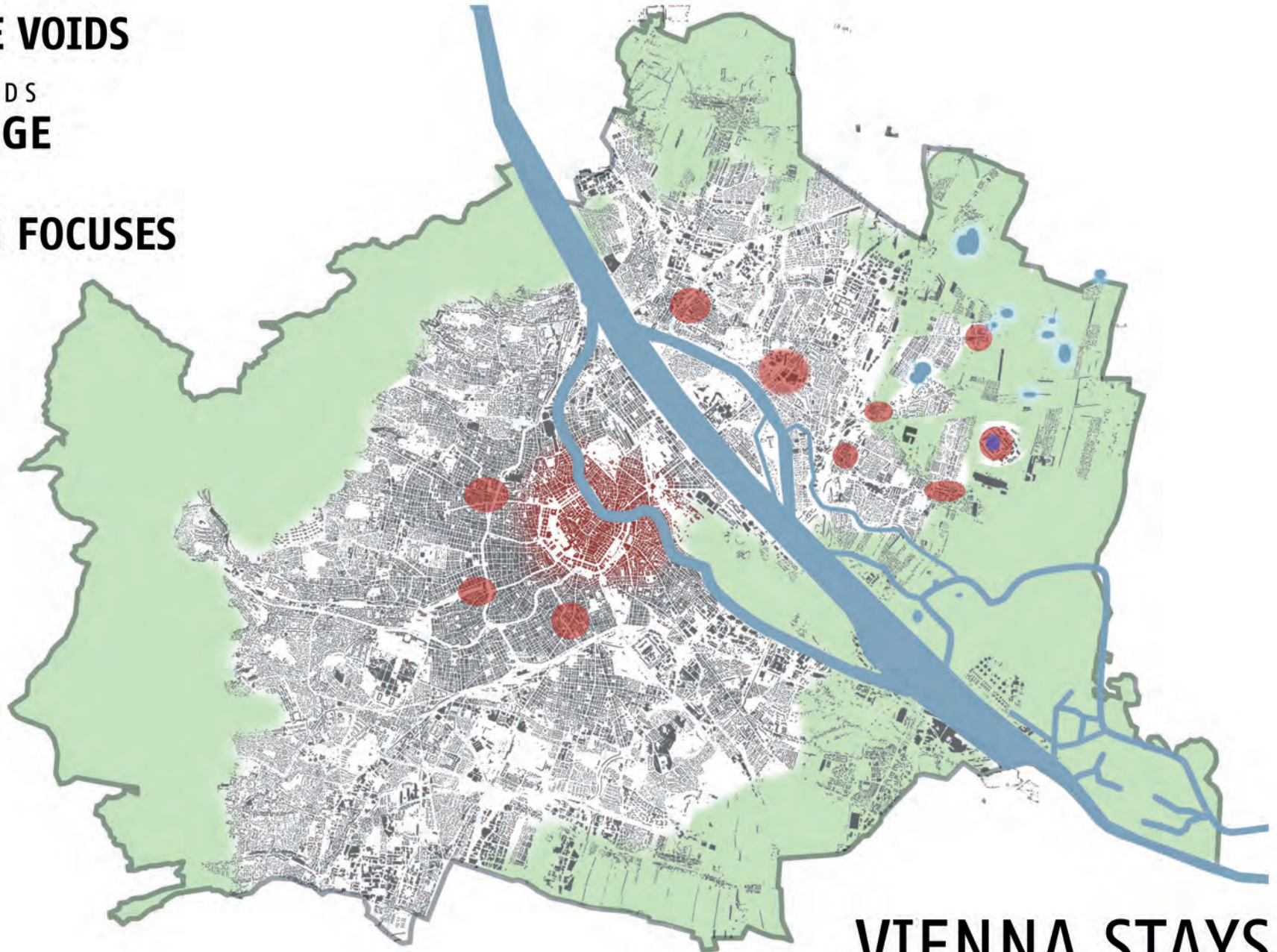
QUALITATIVE VOIDS

CULTIVATED LANDS

URBAN FRINGE

URBAN CENTERS

CONNECTING FOCUSES

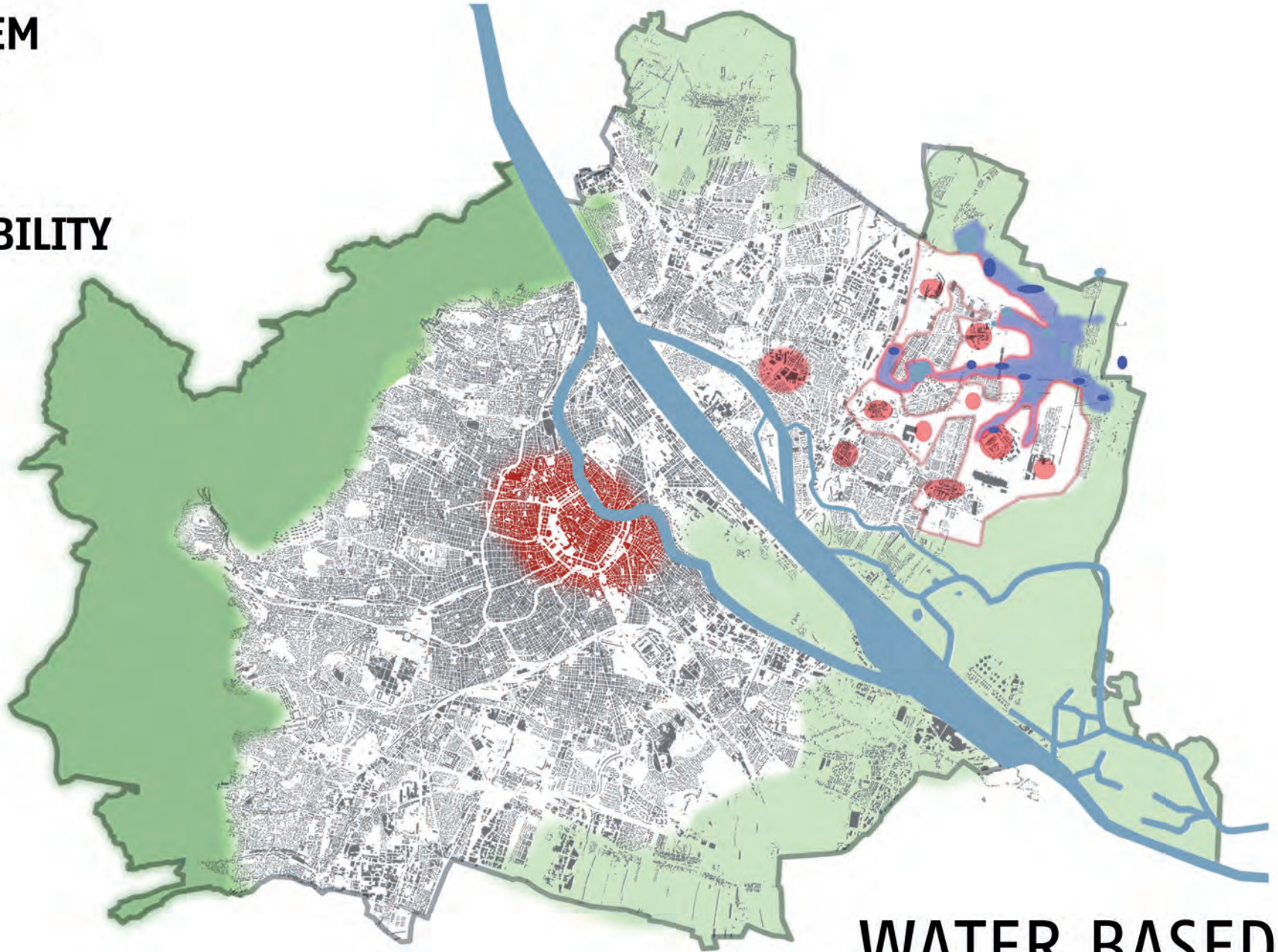


**VIENNA STAYS
DANUBECITY**
opposing sprawl | 200

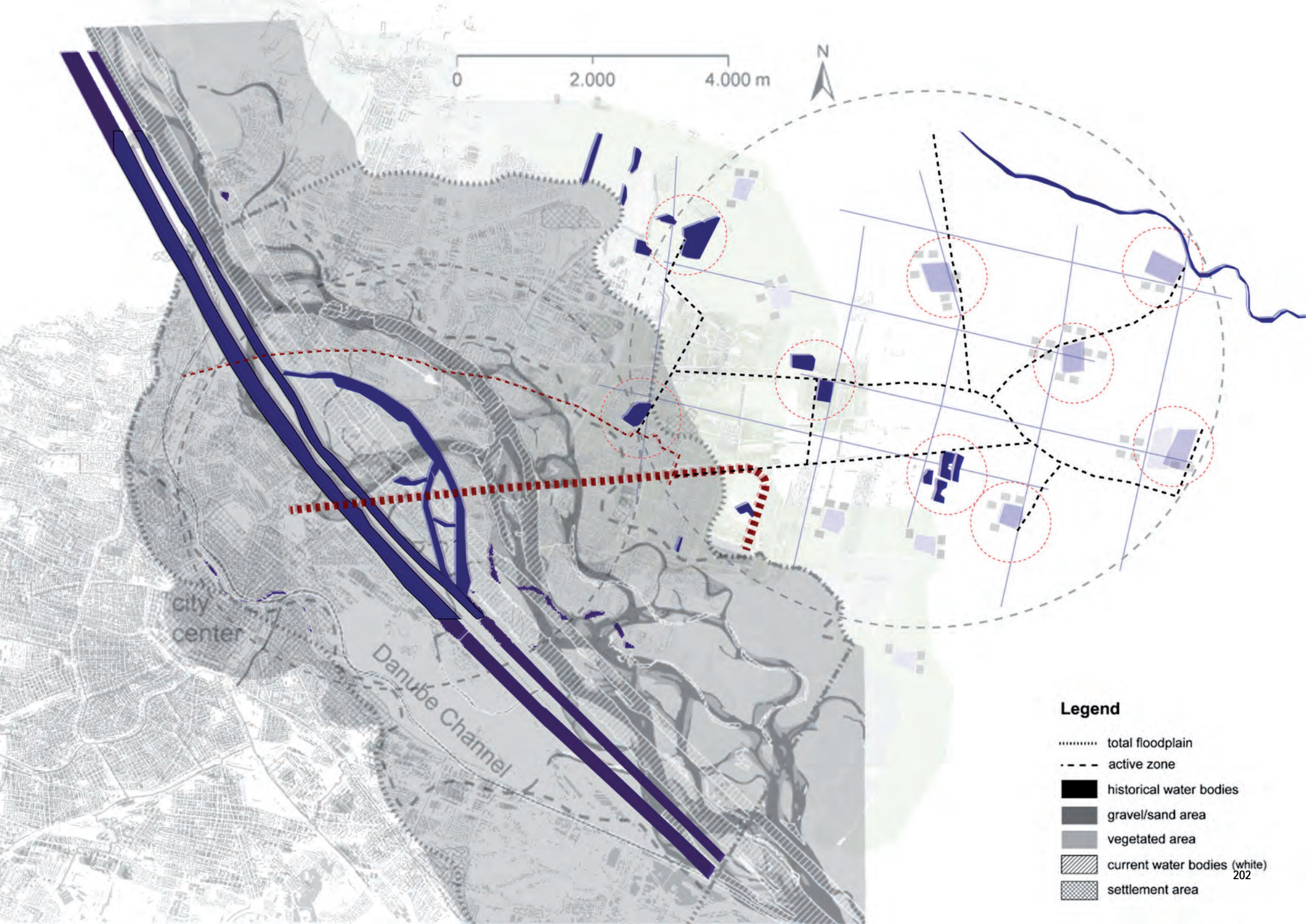
PONDS
WATERSYSTEM

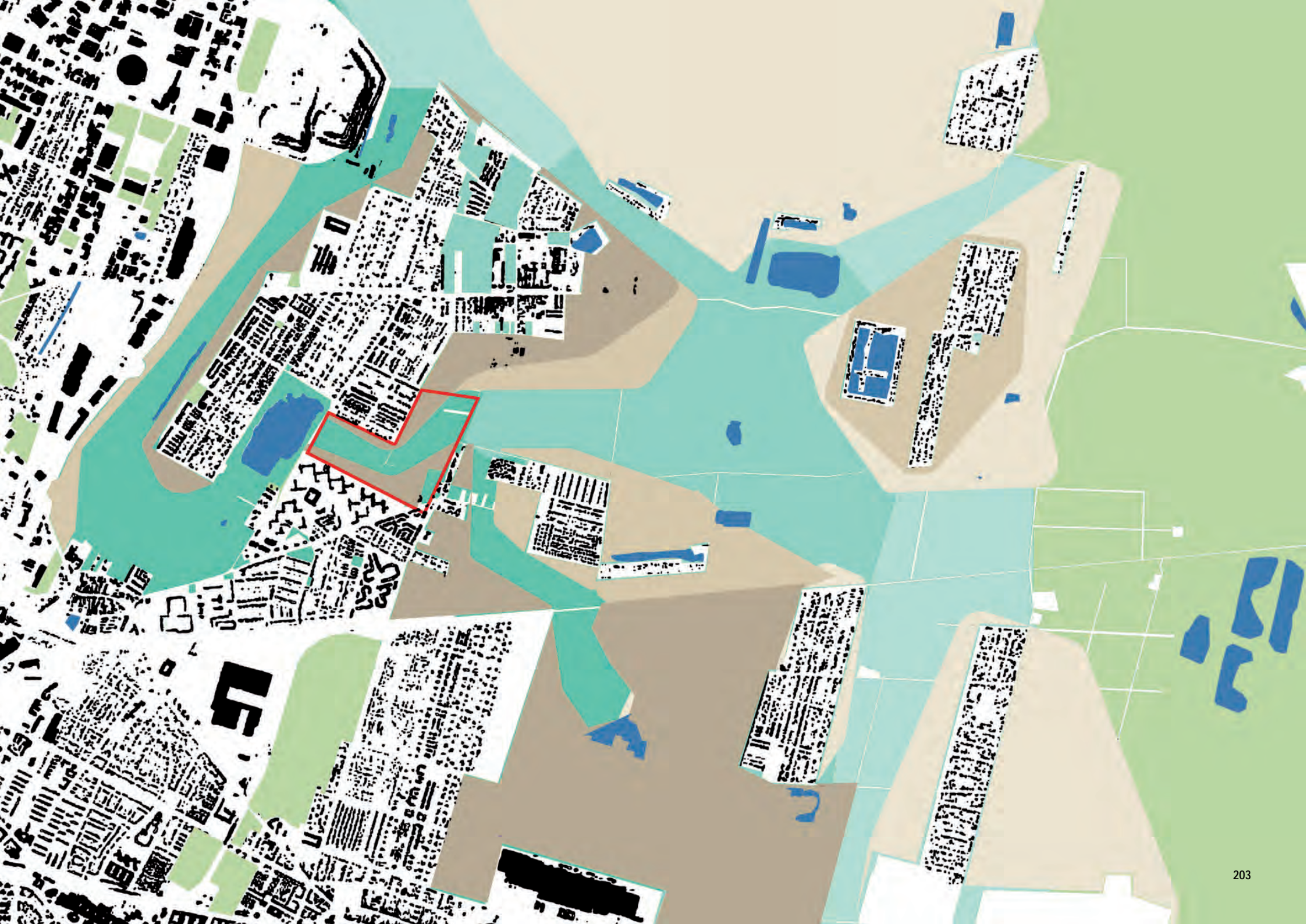
DENSE URBAN
CENTRALITY

HIGH END LOW
ENERGY MOBILITY



**WATER BASED
DENSITY**
opposing sprawl 201



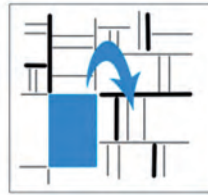




LEISURE | SPORTS



HOUSE HOLD USE
OF GREY WATER

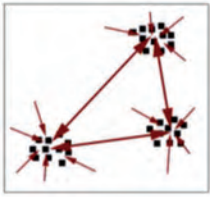


WATER SUPPLY
WATER PURIFICATION
WATER STORAGE

WATER
NATURAL RESOURCE



**LINKING
WETLAND
CORRIDOR**



OLD CENTERS
AS DESTINATIONS
NO THROUGH
TRAFFIC

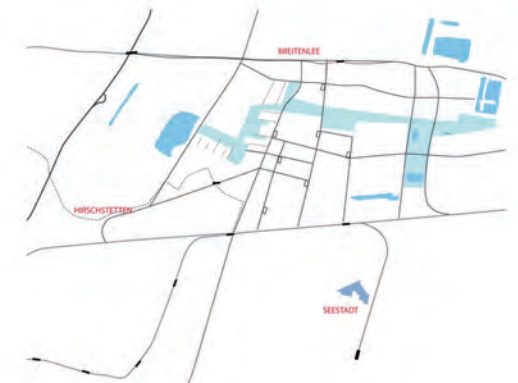
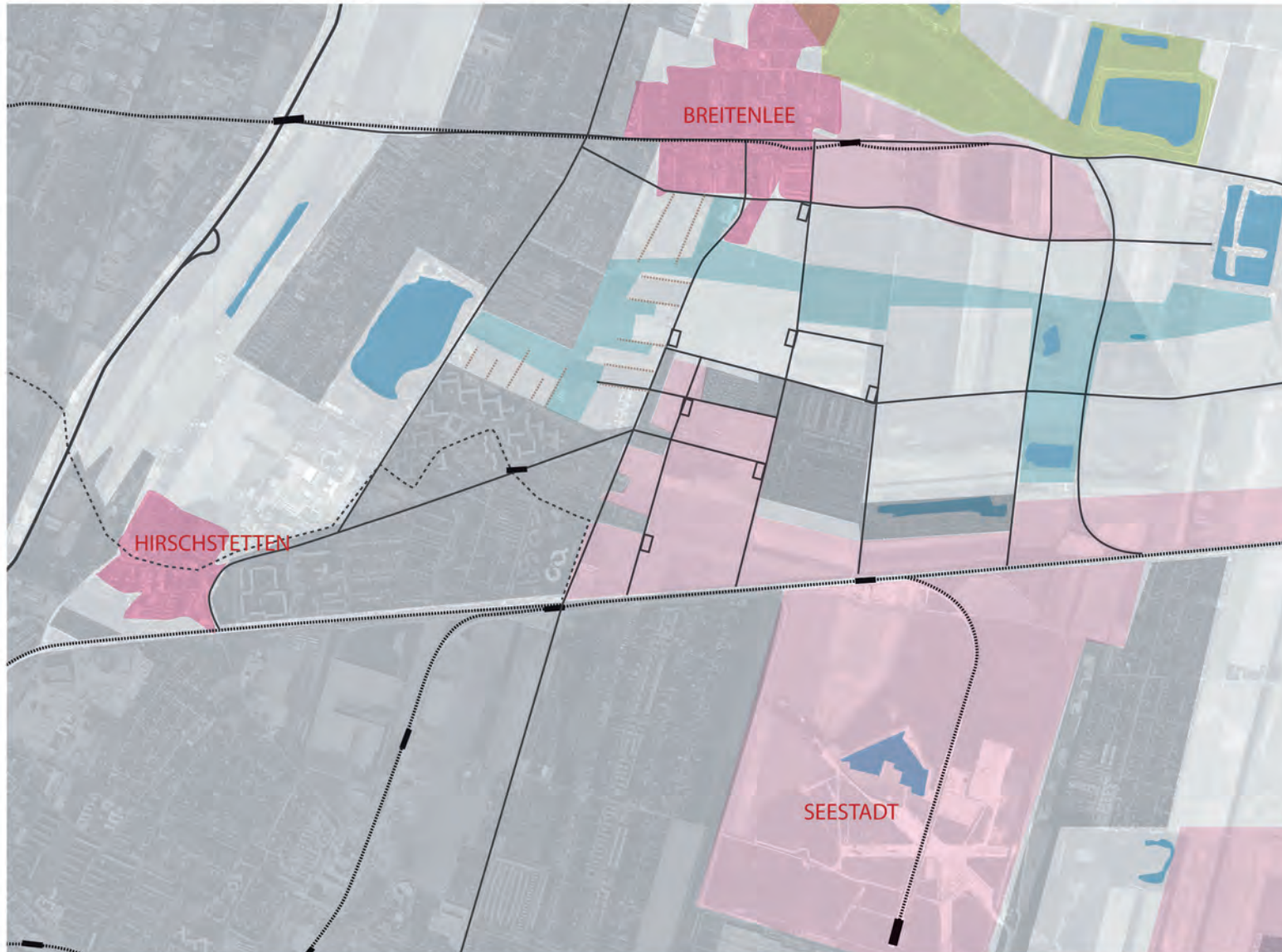


GREEN
PROMENADE
QUALITY
OF STREETS

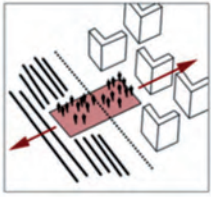


SHARED CONCEPTS
MOBILITY CONNECTIONS

MOBILITY
NETWORK RESOURCE



**LINKING
MOBILITY
SYSTEM**



LINKING
PUBLIC SPACES

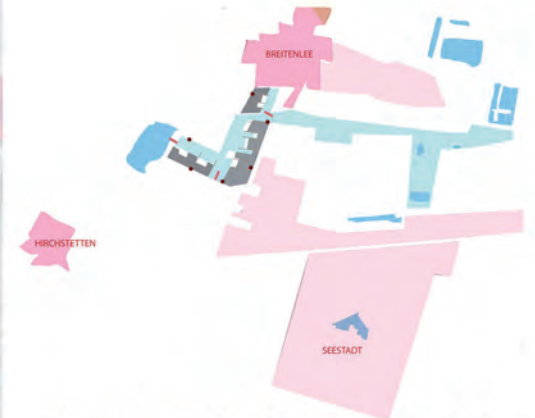


DENSITY
VS INDIVIDUAL
HOUSES

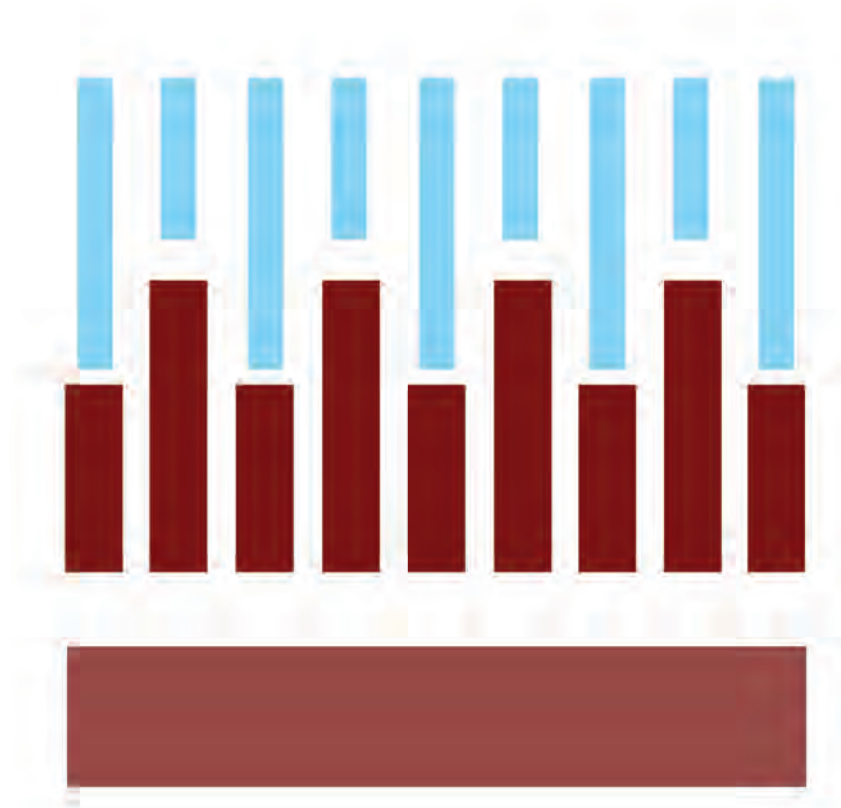


SERVICES
PUBLIC FACILITIES

SETTLEMENT
SOCIAL RESOURCE



**LINKING
DIFFERENT
DENSITY** 206



WETLAND CORRIDOR



NEW DENSE CITY

EXISTING CITY

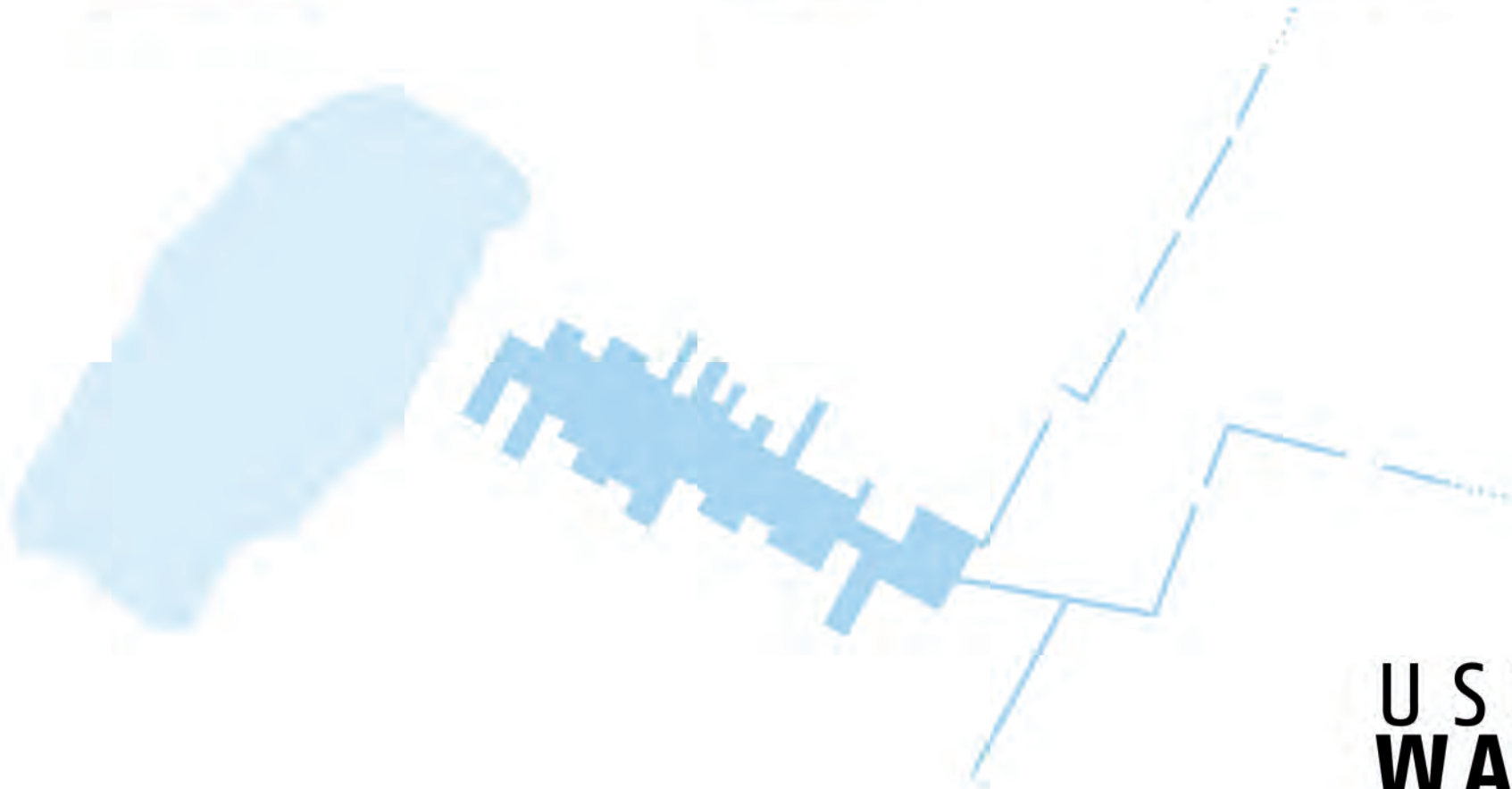
**NEW URBAN
MODEL**
related to water





city fields

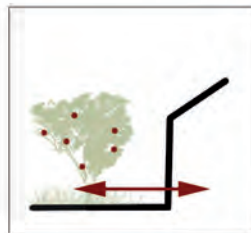
WATER FOR LEISURE COLLECTIVE WATER FOR SUSTAINABILITY WATER FOR AGRICULTURE



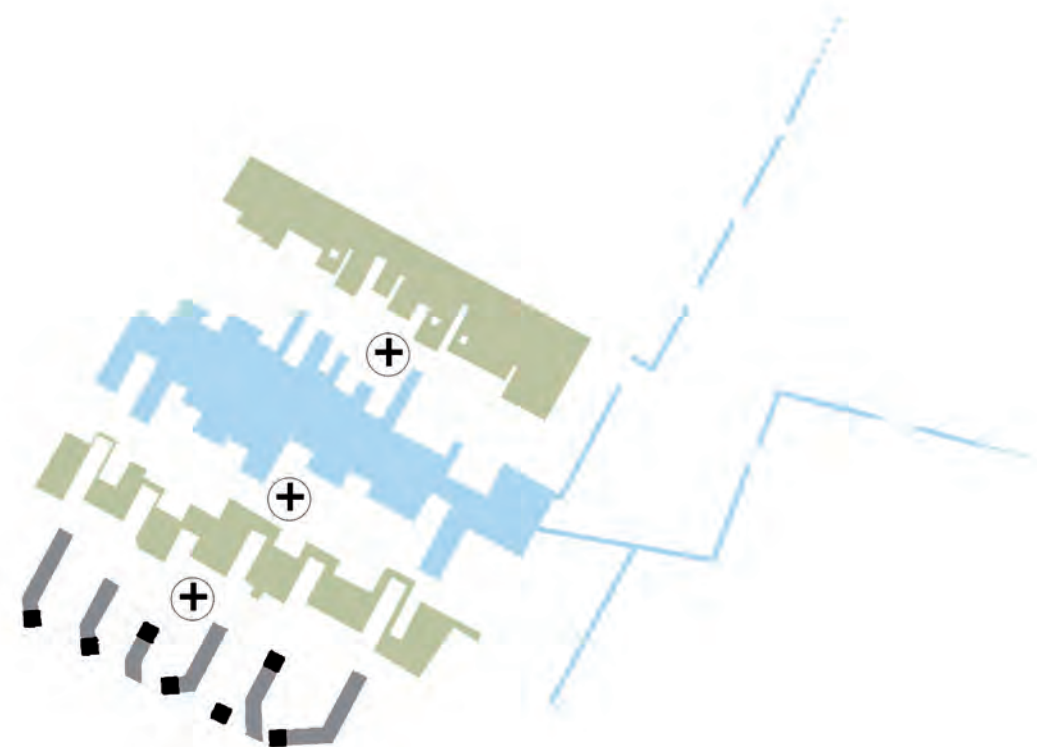
**USING
WATER**

city fields

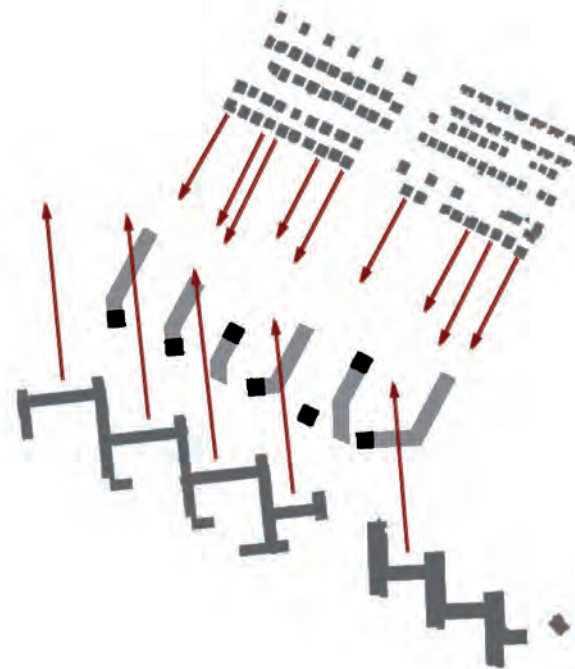
GREEN FOR LEISURE COLLECTIVE GREEN FOR SUSTAINABILITY GREEN FOR AGRICULTURE



USING
GREEN



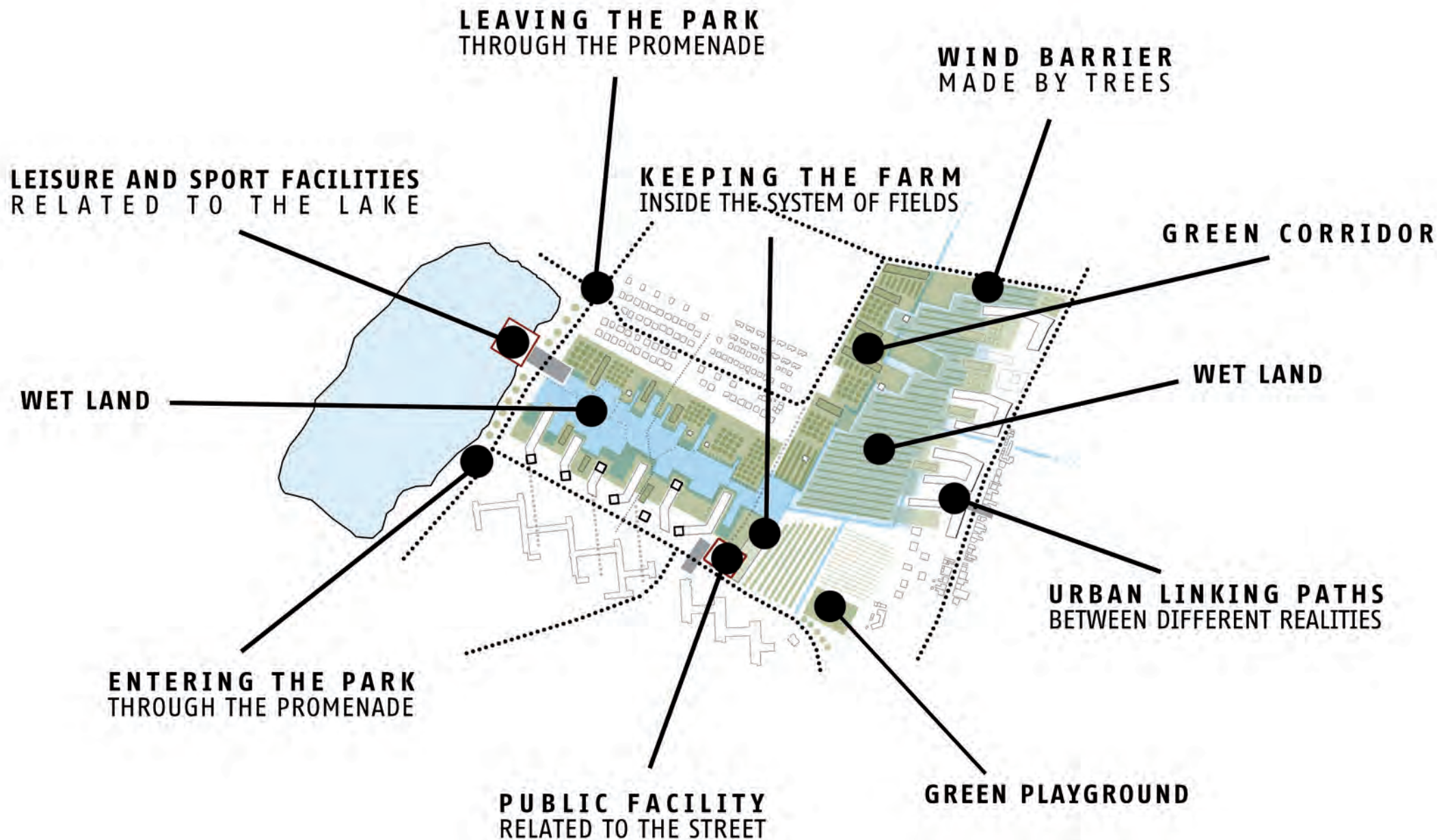
LINKING FINGERS
WATER + GREEN + BUILT



**KEEP VISUALS OF
EXISTING BUILDINGS**



**MAKING URBAN FACADE
DENSE BUT PERMEABLE**



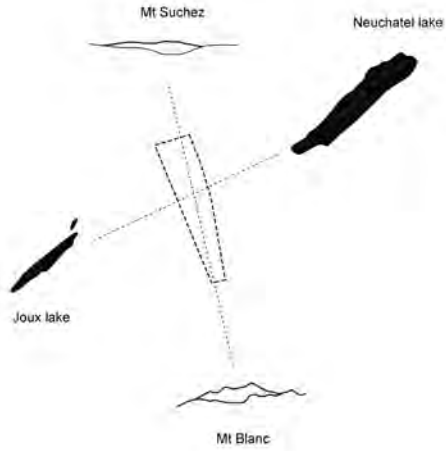
**NEW URBAN
FEATURES**
related to water



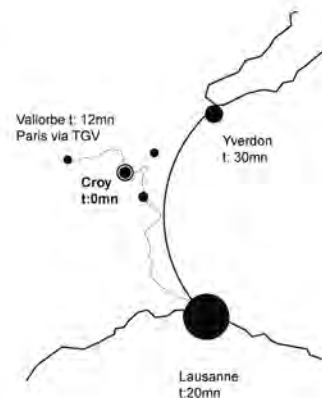
TOPIC 4 – COMMON RESOURCES AND MUTATION

WINNING PROJECTS EUROPEAN 11 ON THE TOPIC LINKING WITH USES

ROMAINMÔTIER (CH)
Vincent Arné (Fr), Aude Mermier (Fr)
Built edges / Garden-metropolis



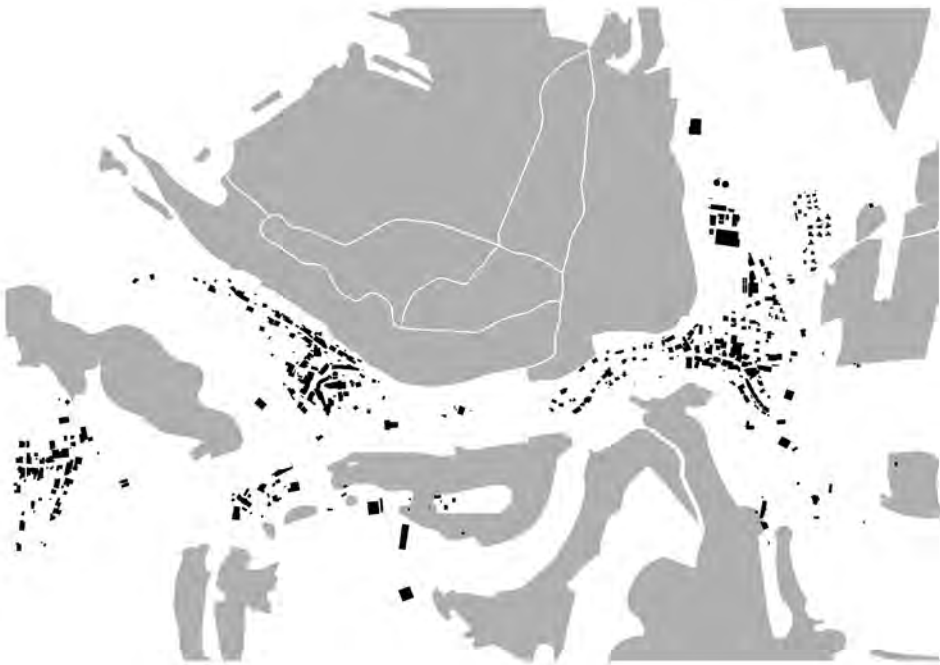
WIDE LANDSCAPE



GARDENED METROPOLIS



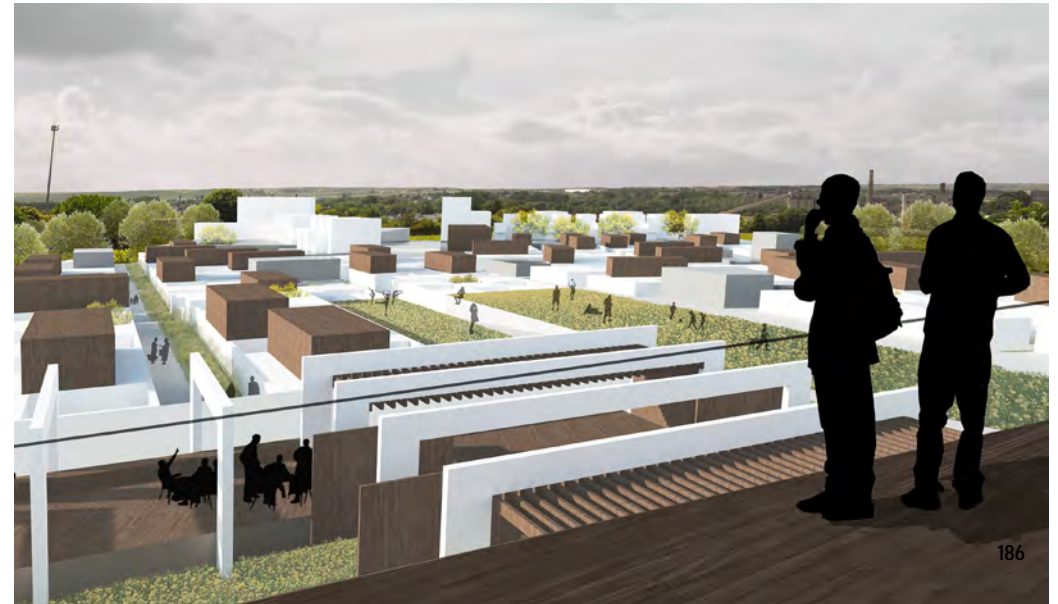
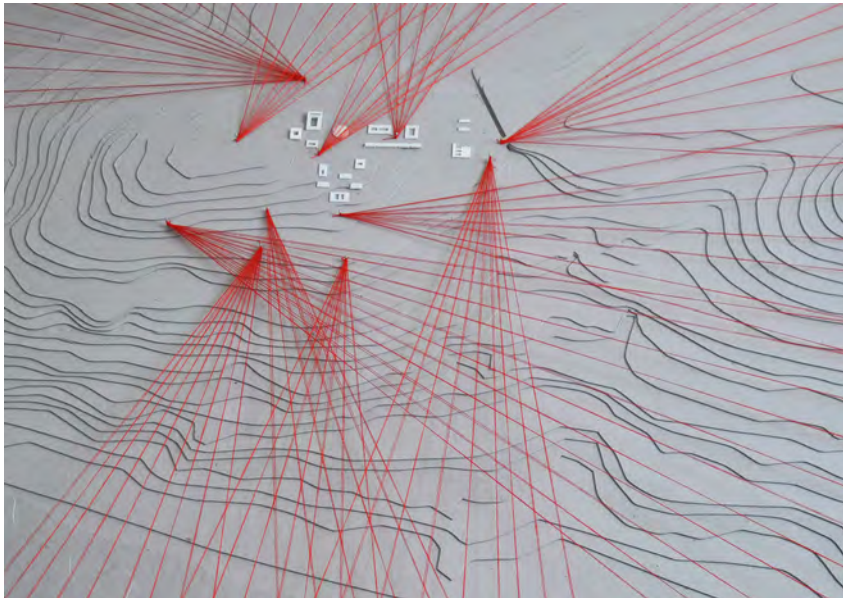
CLEARING: INNER LANDSCAPE



+



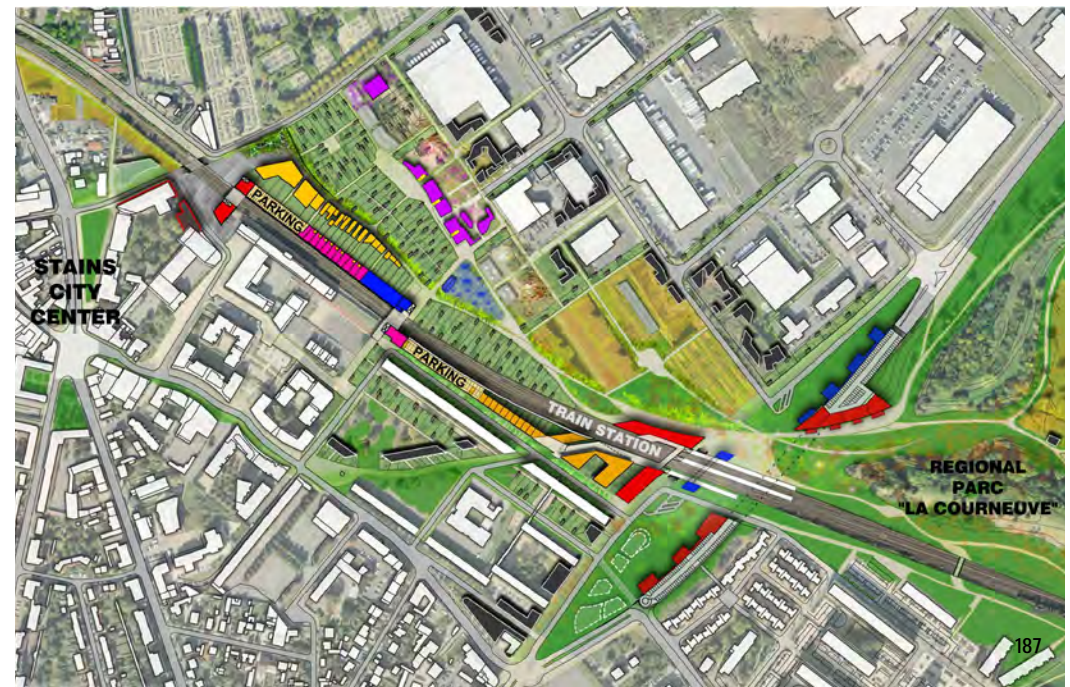
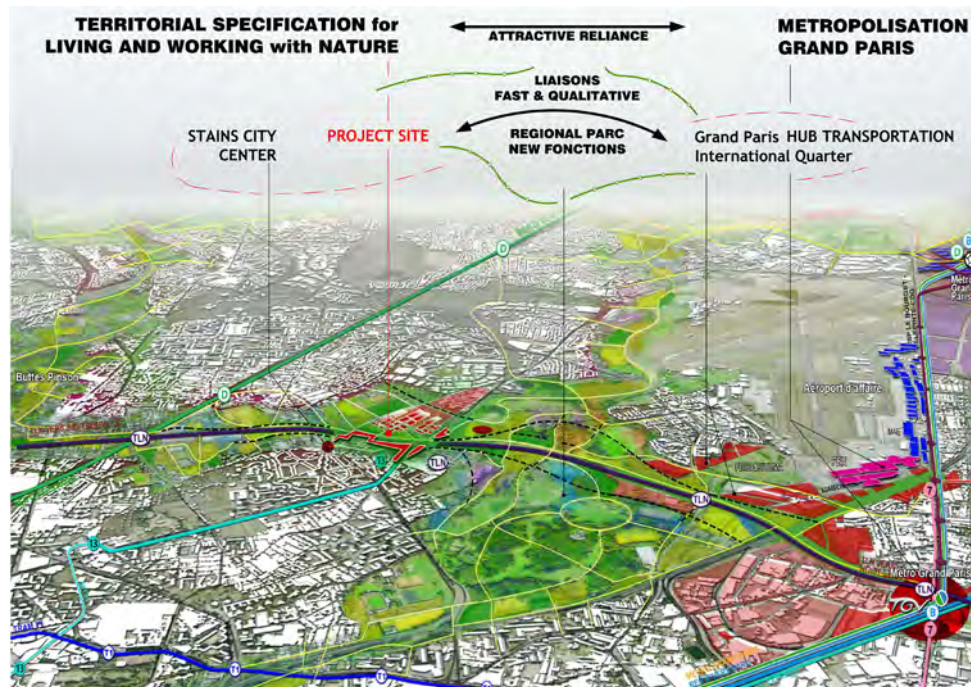
Reims (FR)
Amélie Fontaine (Fr), César Vabre (Fr), Madeleine Clavel (Fr)
Landscape beyond limits



STAINS (Fr)

Tanguy Mallier (Fr), Claire Klinger (Fr)

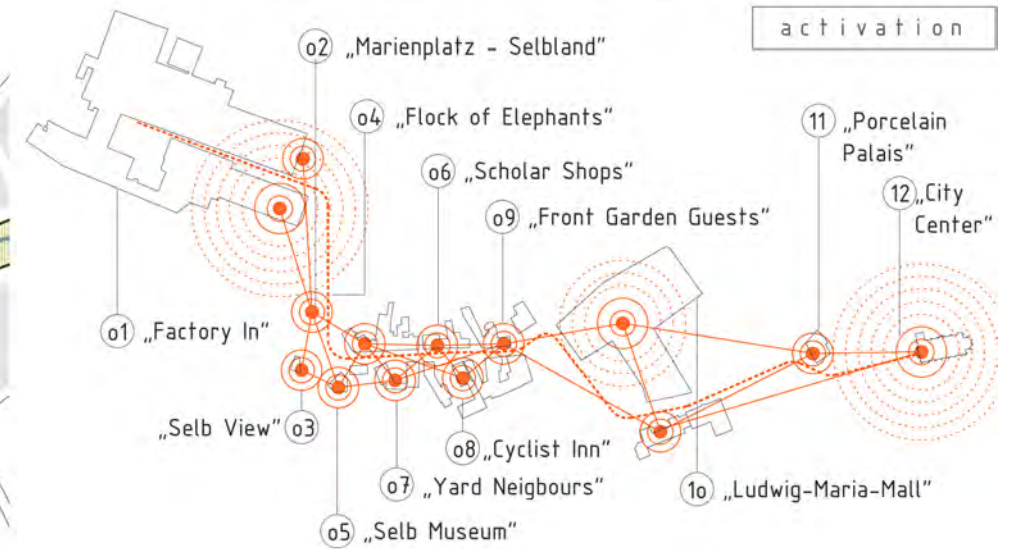
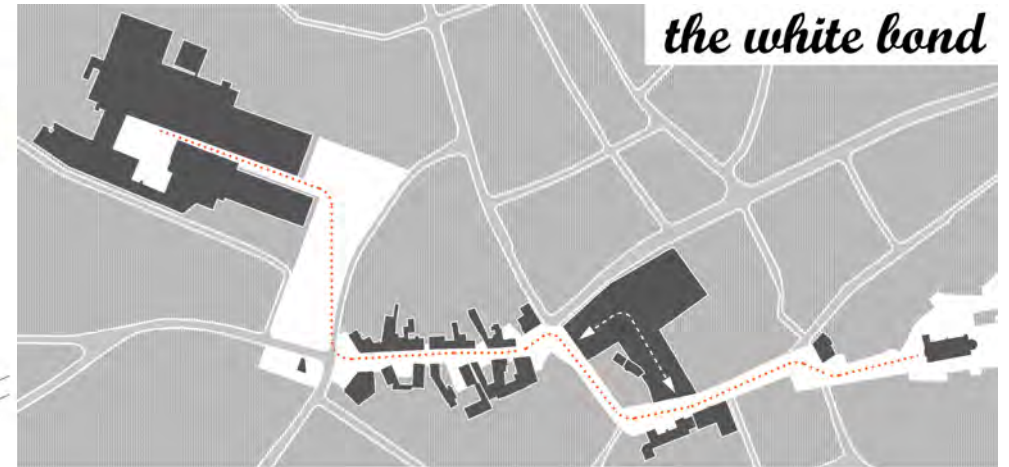
Linking live from earth to the city



SELB (DE)

Alexa Bodammer (De), Christoph Richter (De), Jan Trutz (De), Roland Züger (Ch)

Selbland



PORVOO (FI)

Jouni Heinanen (FI), Valterri Heinonen (FI), Pia Sjöroos (FI)

Embroidery



IBBENBÜREN (DE)

Giovanni Santini (IT), Andrea Karimkahn (IT), Alexandros Liaskovitis (GR), Rosa Romano (IT)

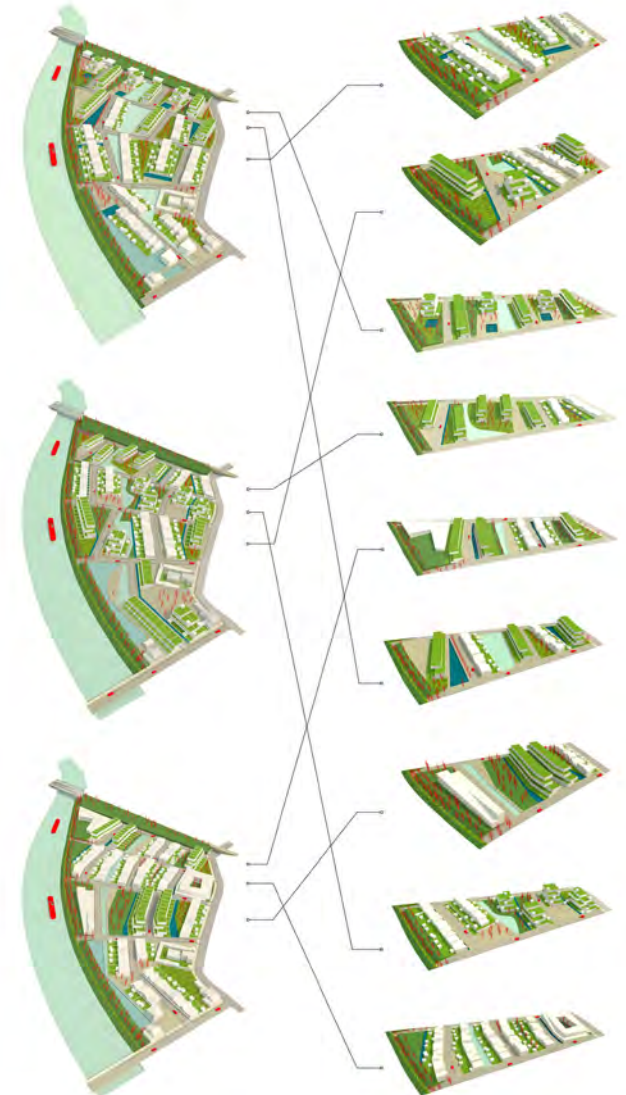
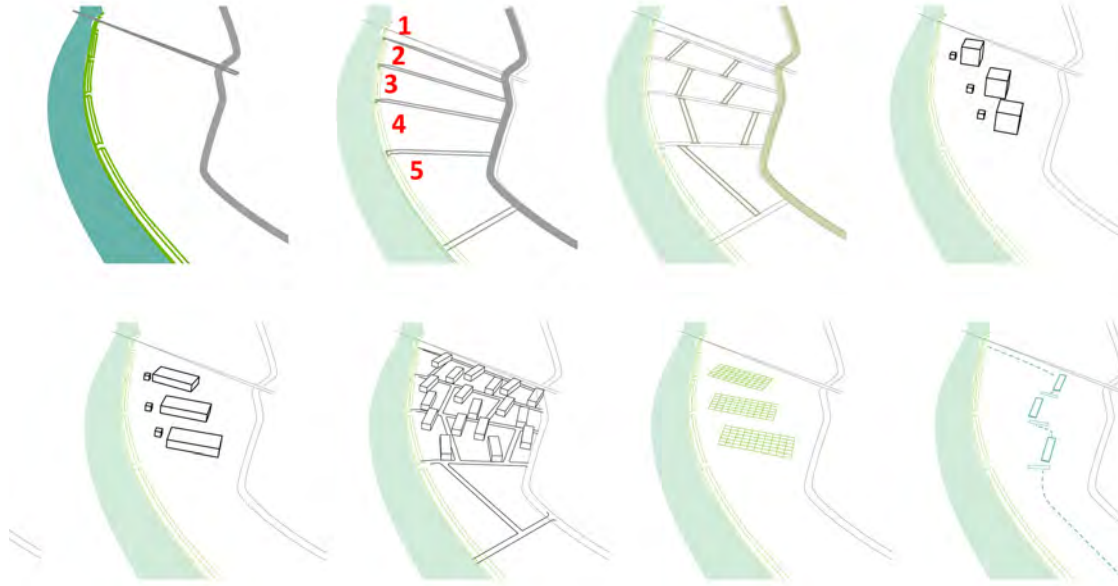
lanus



SAMBREVILLE (BE)

Benoit Coulondres (Fr), Florence Gaudin (Fr)

QCM



GUIMARAES (PT)

Daniel Duarte Pereira (PT), Fernando Ferreira (PT), Gabriela Silva (PT), Sara Ferreira (PT), Daniel Macedo (PT)

IN BETWEEN PLACE'S TIME



Pre-existing



1st STAGE
Seeding Structure



2nd STAGE
Program_Silvaes Forum

LEEWARDEN (NL)

Alina Lippiello (IT), Leonardo Zuccaro Marchi (IT)

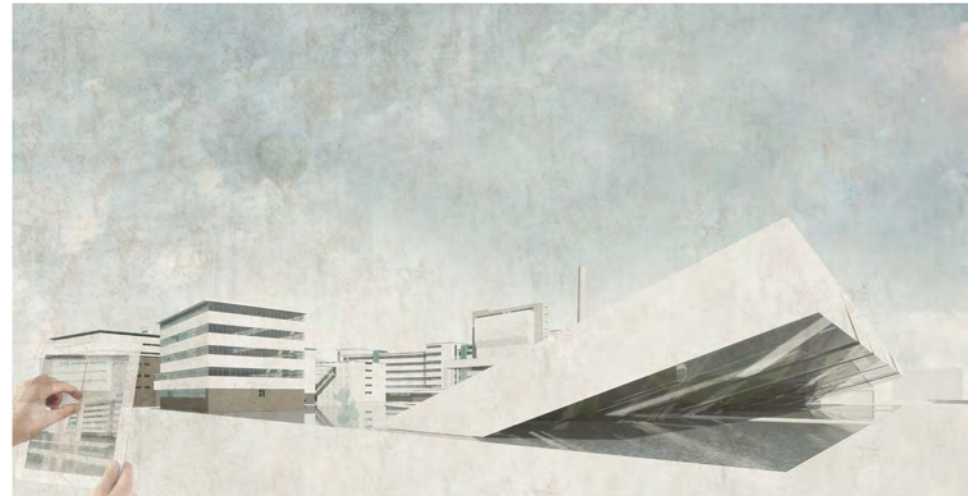
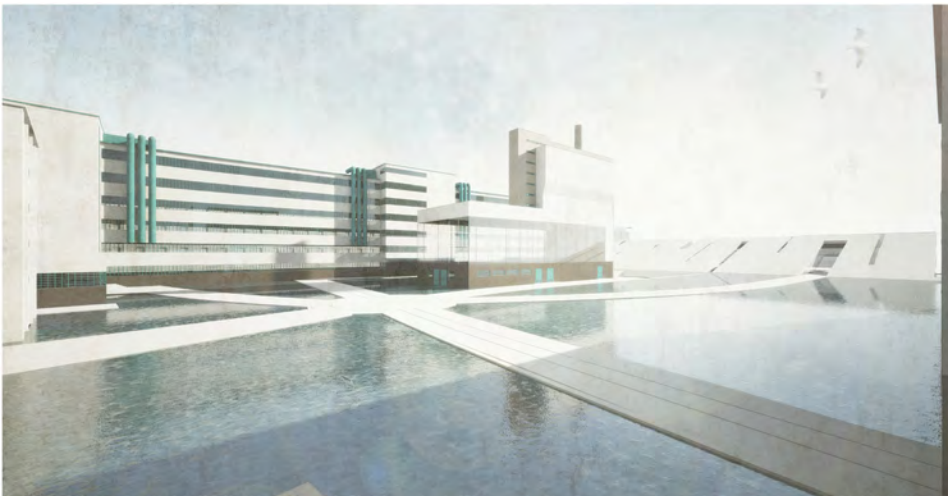
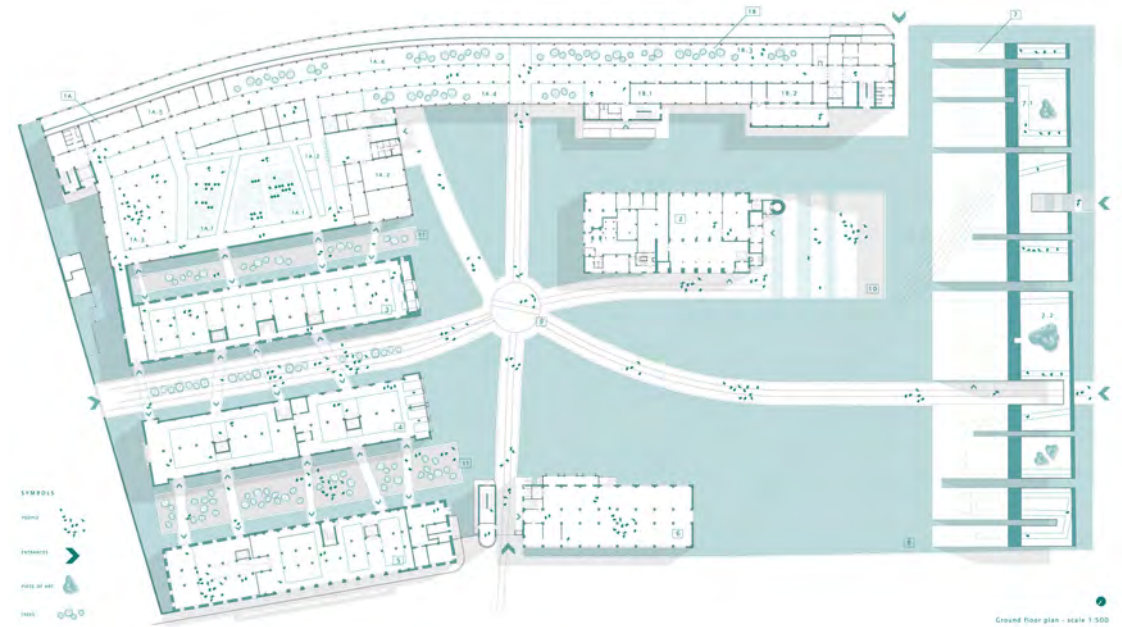
Floating Blocks



LINZ (AT)

Francesco Fusaro (IT), Marcello Galiotto (IT), Marco Montagnini (IT), Nicola Montini (It), Alessandra Rampazzo (IT), Gian Luca Zoli (IT)

Urban Monolith



ALMERE (NL)

Olaf Janson (NI), Joost Maatkamp (NI), Rens Wijnakker (NI), Koen Looman (NI)

Envisioning Baucis, Observatory for an Artificial Wilderness

