

**TOPIC 4**

**COMMON RESSOURCES  
AND MUTATION**

**SCENARIO 2**

**PRODUCTIVE COLLECTIVE LANDSCAPE**

**EUROPAN EUROPE + EUROPAN AUSTRIA + CITY OF VIENNA  
+ WINNING TEAMS EUROPAN 11**

## TOPIC 4 – COMMON RESOURCES AND MUTATION

### BERRESGASSE

The issue of finite natural resources introduces the concept of scarcity and, therefore, of its value: resources have always been at the heart of the concerns of civilizations in search of an optimum ratio with nature. With the global ecological crisis it is essential that designers develop detailed knowledge and problematize the natural elements and take them into account in the urban project on different scales, treating them as common resources not only to preserve, but also to create an hybridity compatible between city and nature. This session of European marks the growing role of nature in the design of urban projects, and the consideration of natural elements (biotic, abiotic) becomes better, more complex, in order to be the founding elements of the project.

The site in Vienna on this topic is BERRESGASSE AREA. Intervieuing the natural resources of flowerfields and a waterbath with a new dense housing district.

With Winners of  
Romainmôtier (CH), Porvoo (FI)  
And Runners-up of  
Almere (NL), Guimarães (PT), Ibbenbüren (DE), Leeuwarden (NL), Linz (AT), Reims (FR), Sambreville (BE), Selb (DE), Stains (FR)

Coach: Thomas NOUAILLER, architect, Paris (FR)

## TOPIC 4 – COMMON RESOURCES AND MUTATION

### INTRODUCTION

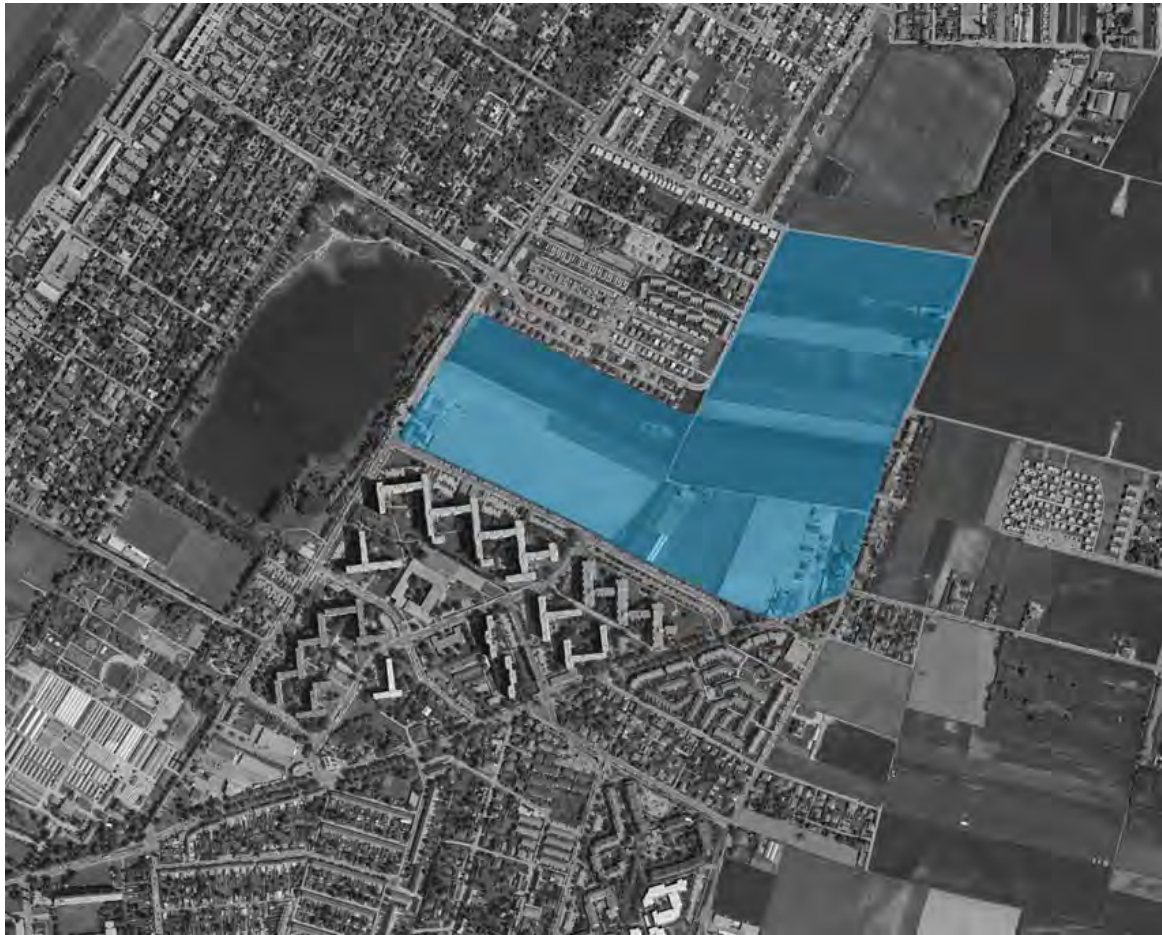
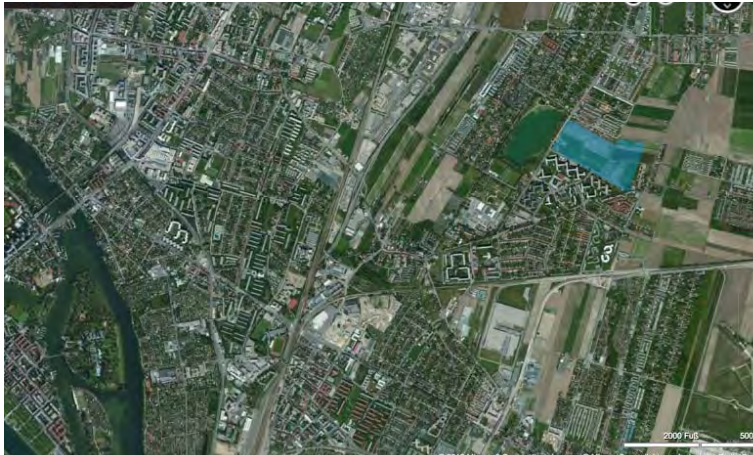
The Berresgasse site led to two different schemes. Both deal with sharing communal resources. The two scenarios are situated within the radial development project of the city of Vienna. They are supported by the major mobility axes of North-Eastern Vienna and question the future of the city fringes.

The first scenario, WIEN GOES 22<sup>ND</sup>, submits a development figure that holds up a landscape shared by the different existing centralities. Located in-between two axes of the city development project, the scheme doesn't aim at filling this empty space but at creating a new kind of connection between places that are already inhabited. The project expresses this principle by creating an inhabited humid environment in which the water of the ponds and the ditches interact with the agricultural ground and the new dwellings. The existing empty space becomes an enriched system where each resource interacts with the next. The buildings come to delineate the city fringe as well as the limit of the existing voids. The built reticulated pattern maximizes the interactions between the dwellings and this rich humid environment, while at the same time offering new links between the various centralities all around the site.

The second scenario, PRODUCTIVE COLLECTIVE LANDSCAPE, is based on drawing a ground pattern that gives a certain thickness to the edge of the city. This border, by reducing the need for new public roads, optimizes the existing public road network to the maximum. The organisation of the plan generated through this pattern preserves the agricultural landscape as a communal resource. It also creates new connections along the fringes of the residential areas through a permeable system (domestic appropriation of the public space, temporary or evolving uses, new paths, new spaces for local production or for leisure ...). The project offers to share a mutual horizon in a system that can be set up gradually, the pieces scattered but still consistent. Thus it offers to achieve both urban concentration and agricultural intensification: a true urban agriculture.

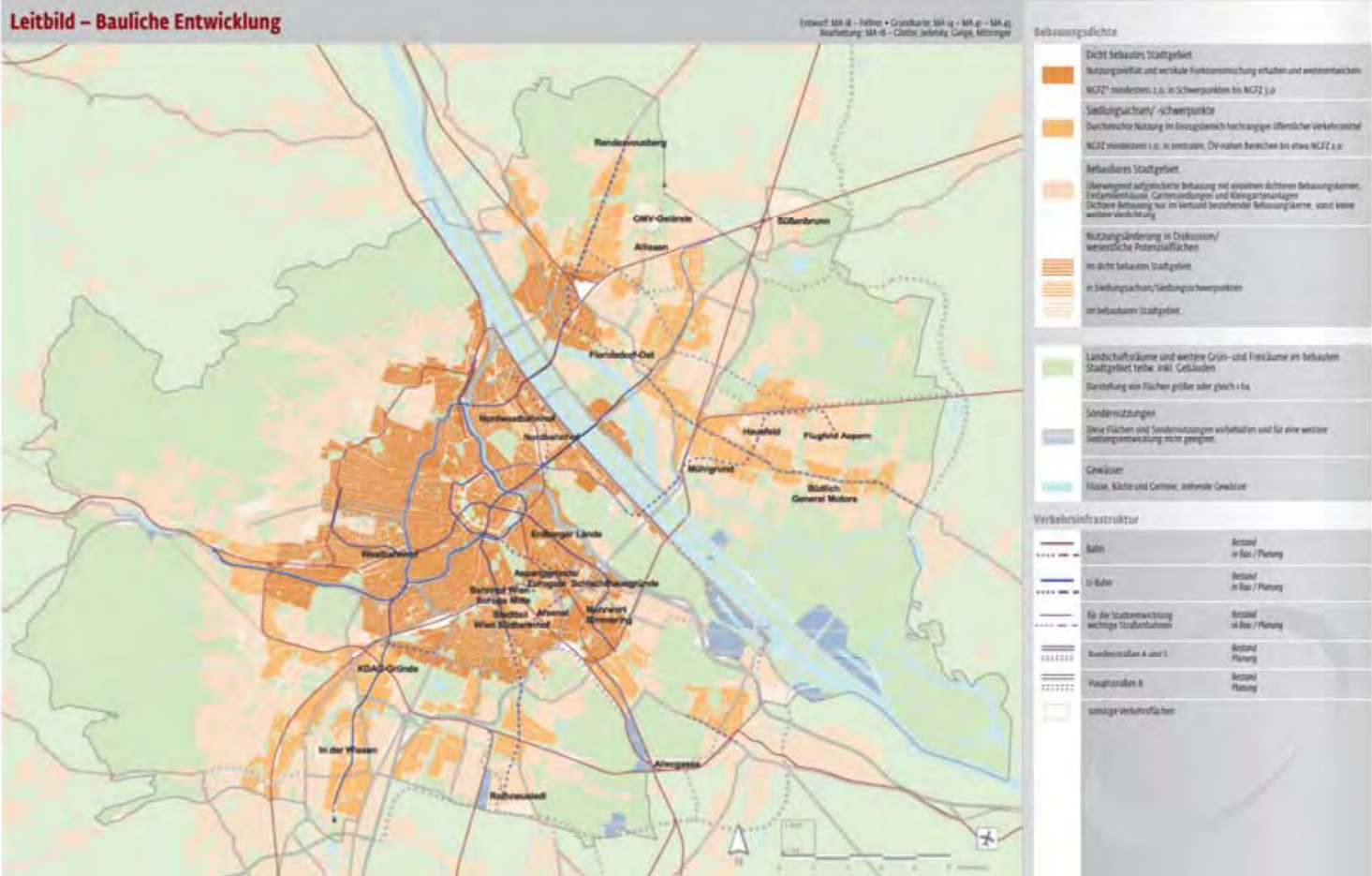
Thomas Nouailler

BERRESGASSE AREA



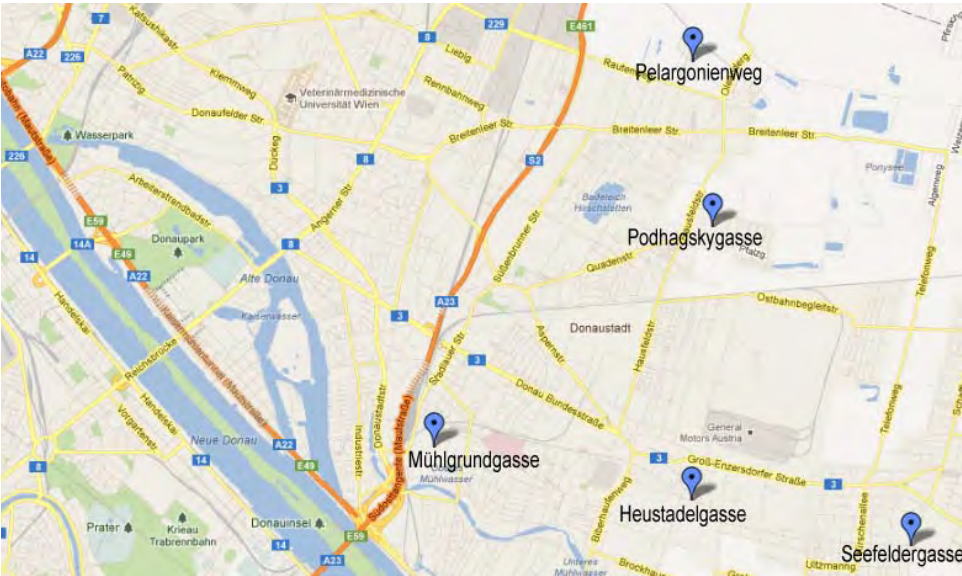


## BERRESGASSE AREA : Overall concept for urban development





Projects and mobility

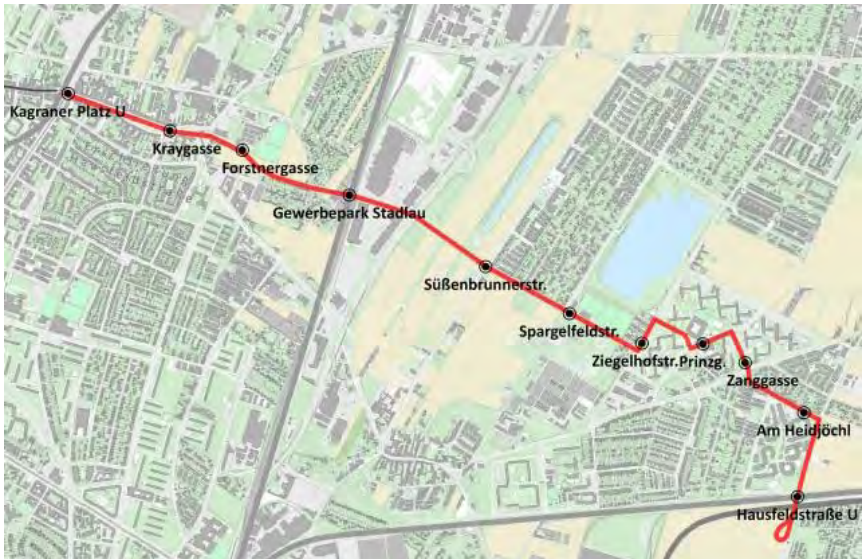


U2 line



Target area U2 Donaustadt – Flugfeld Aspern , STEP05

Tramway





## Flower garden and ponds



Blumengärten Hirschstetten (flower gardens)



**Badeteich Hirschstetten** (swimming pond)



Vienna bathing culture 1910

SCENARIO 2:

# PRODUCTIVE COLLECTIVE LANDSCAPE

---

Amélie FONTAINE, Christoph RICHTER, Vincent ARNÉ, Daniel DUARTE PEREIRA  
Fernando FERREIRA, Benoit COULONDRES, Rens WIJNAKKER

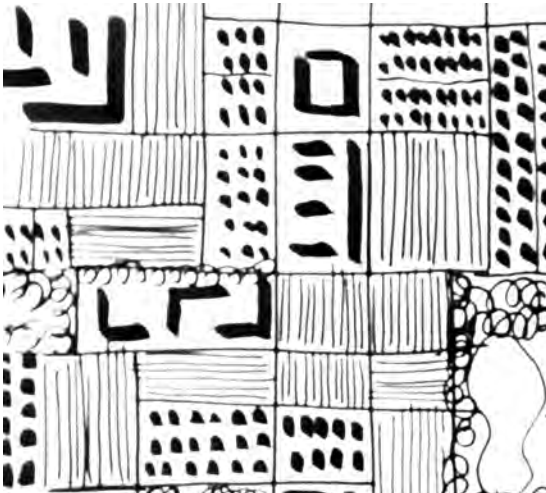


A LANDSCAPE COMPOSED OF DIFFERENT OCCUPATIONS = DIFFERENT HORIZONS

LARGE HORIZON



DOMESTIC HORIZON

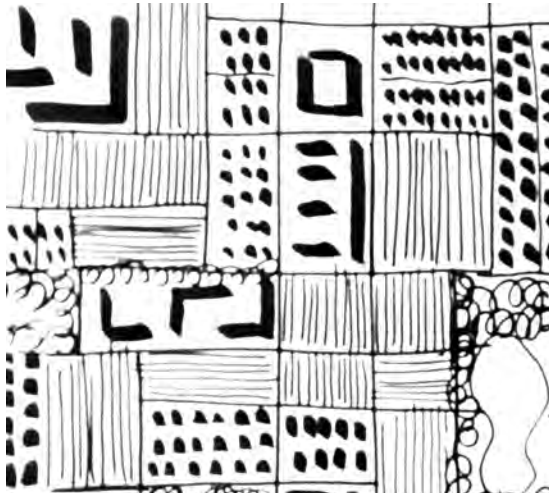


A LANDSCAPE COMPOSED OF DIFFERENT OCCUPATIONS = DIFFERENT HORIZONS

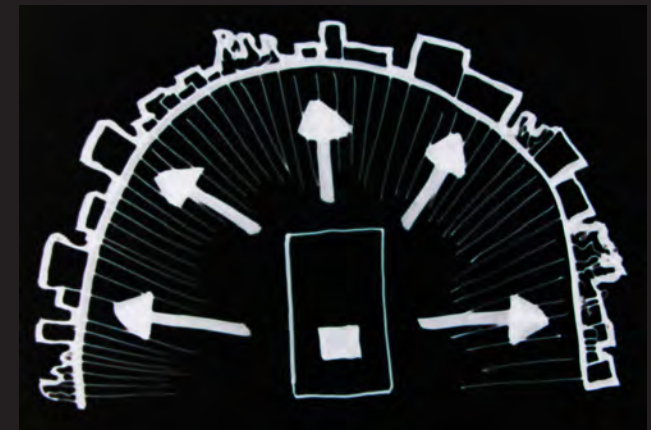
LARGE HORIZON



DOMESTIC HORIZON



**EVERYONE SHARES  
A COLLECTIVE HORIZON**





## ACTUAL SITUATION

PRODUCTIVE FIELDS ARE REMAINING IN THE AREA



## CONTINUATION OF THE ACTUAL DEVELOPMENT

“ FILLING THE PRODUCTIVE FIELD WITH URBAN”



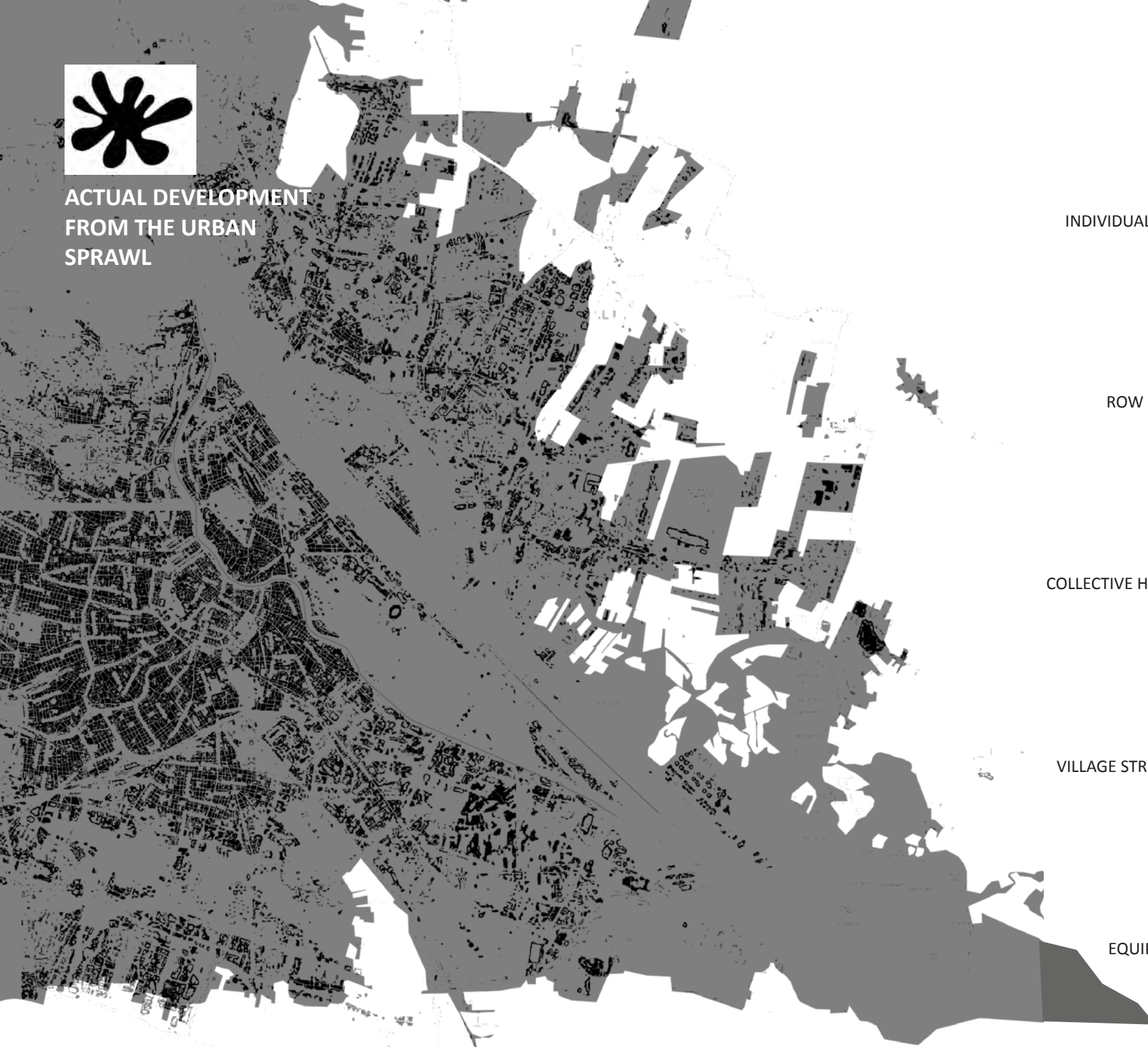
## GENERIC SITUATION

COLONISATION OF THE RURAL LANDSCAPE .....leads to disparition of the productive areas near the city



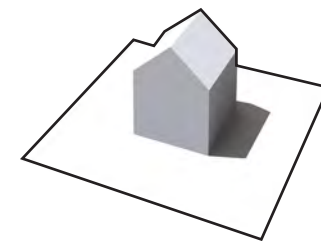


ACTUAL DEVELOPMENT  
FROM THE URBAN  
SPRAWL

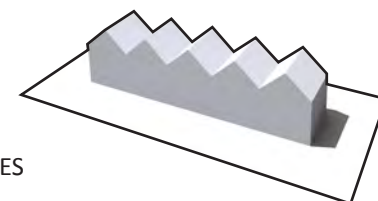


TOOL BOX

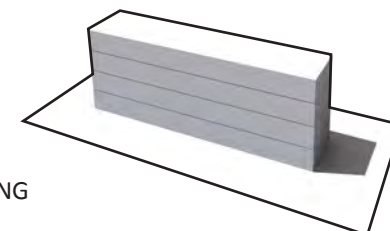
INDIVIDUAL HOUSE



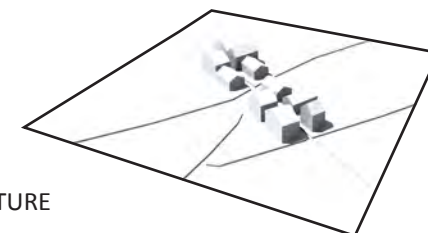
ROW HOUSES



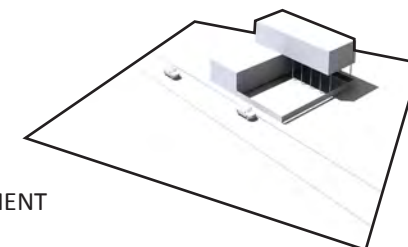
COLLECTIVE HOUSING



VILLAGE STRUCTURE



EQUIPEMENT

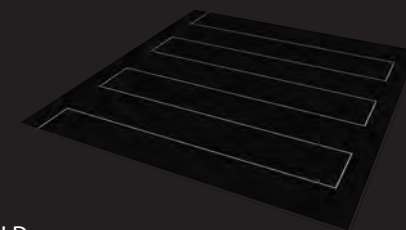




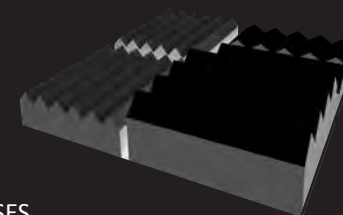
INVERSION STARTING  
FROM INTERSTICES



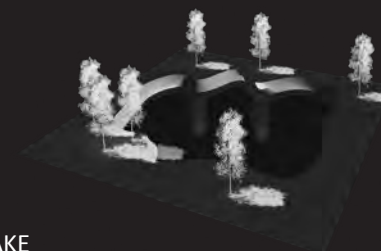
## TOOL BOX



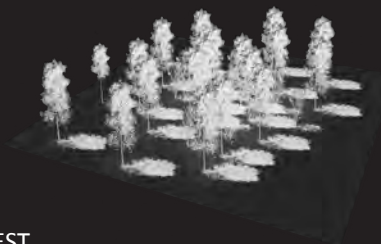
FIELD



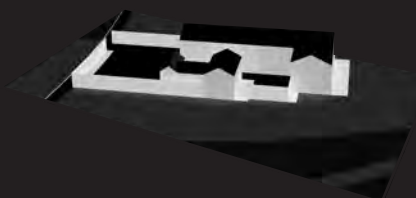
GLASS HOUSES



LAKE



FOREST

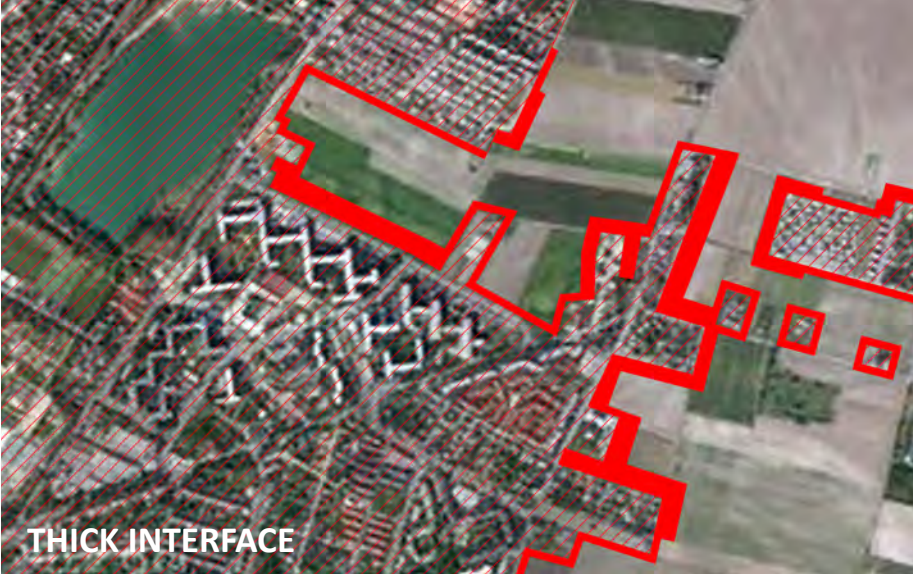
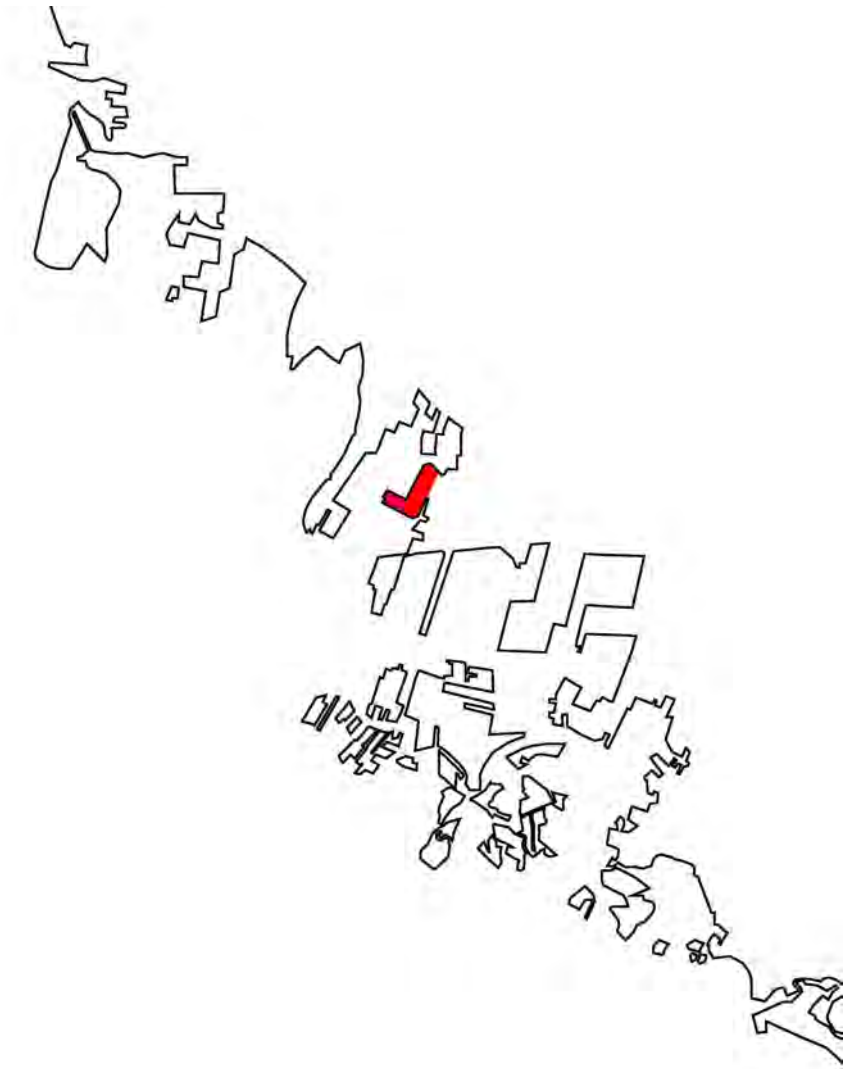


FARM





**THE CITY EDGES AS AN  
OPPORTUNITY TO SEED  
NEW RELATIONSHIPS**



**THICK INTERFACE**



**EXISTING APPROPRIATION**



**WORKING WITH LIMITS AND  
CONNECTION : NEW PERMABILITIES**

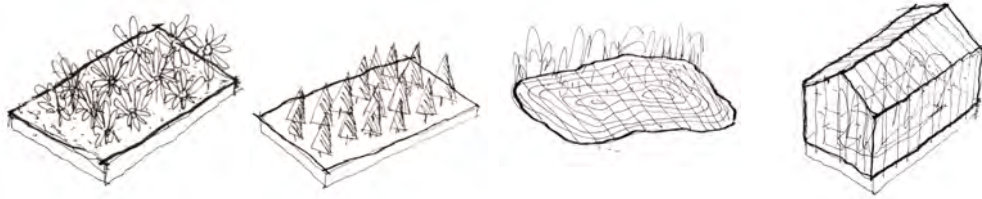




# BASE RESOURCES

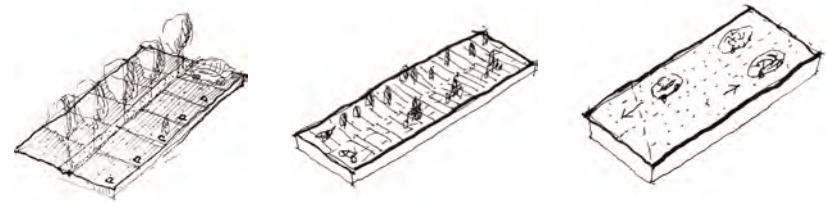
## LANDSCAPE

vegetable field - cereals field - forest - lake - glasshouse - ...



## ACCESSIBILITY

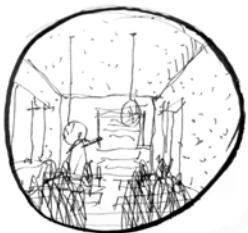
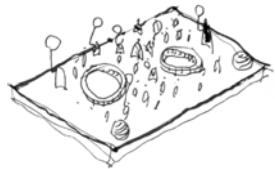
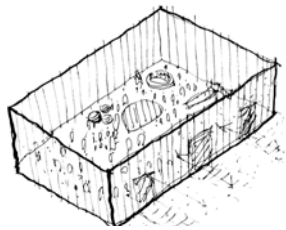
path - biking path - parking plot - ...



# DEVELOPMENT RESOURCES

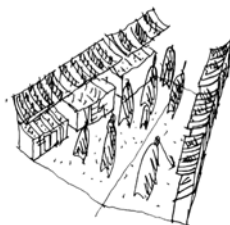
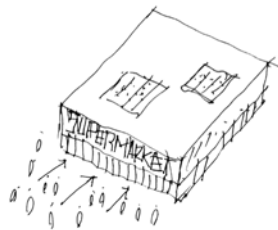
## SOCIAL FACILITIES

school - kindergarden  
- nursery - youthcenter - medical center



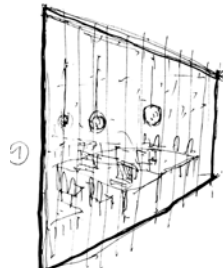
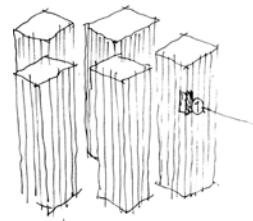
## COMMERCIAL STRUCTURES

school - kindergarden  
- nursery - youthcenter - ...



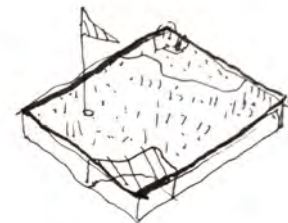
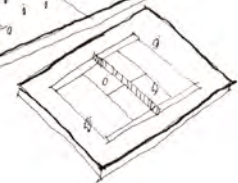
## WORKING

offices - factories - ...

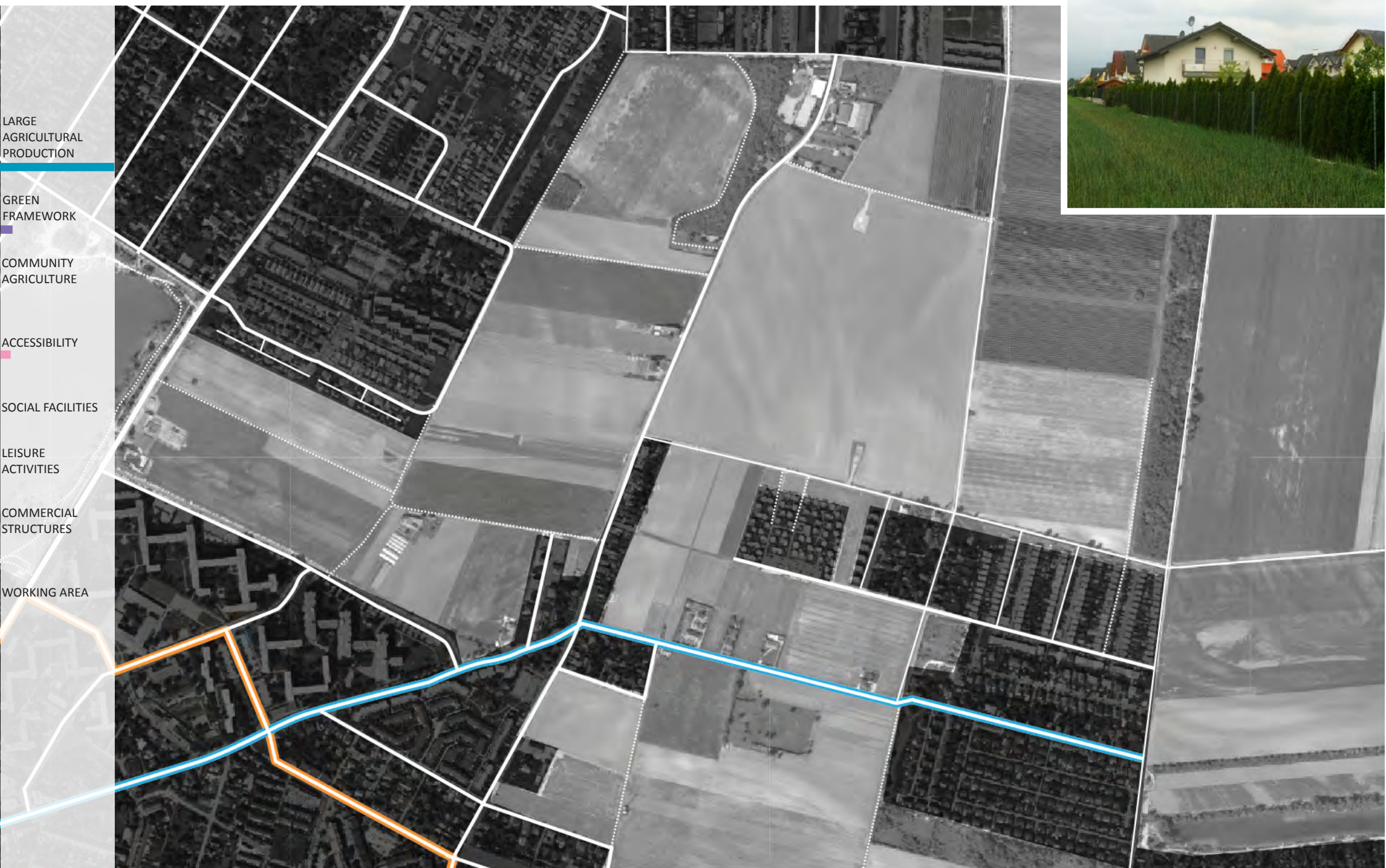


## LEISURE

sport field - nautic activities - golf - equestrian center - ...

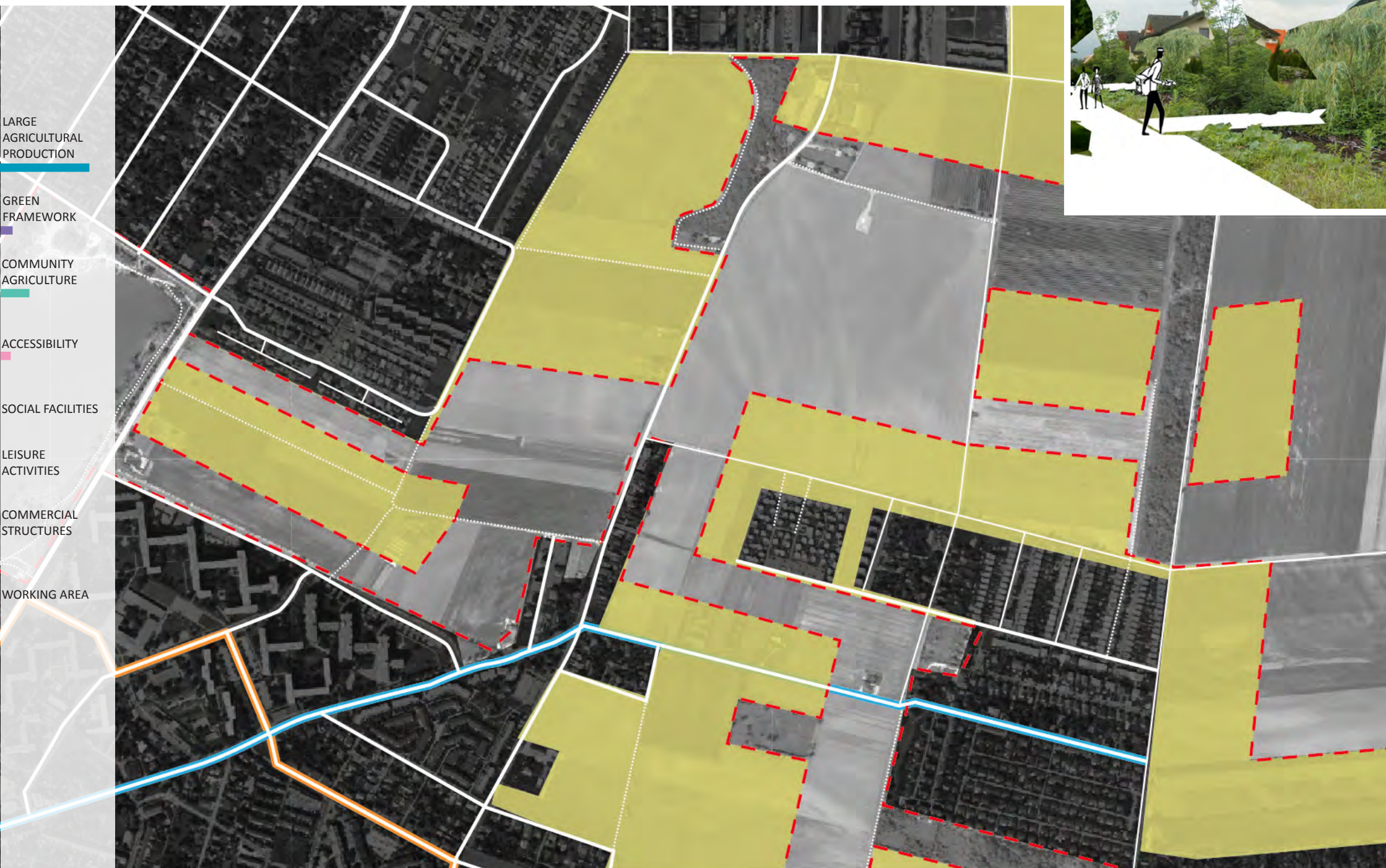


ACTUAL - TIME 0





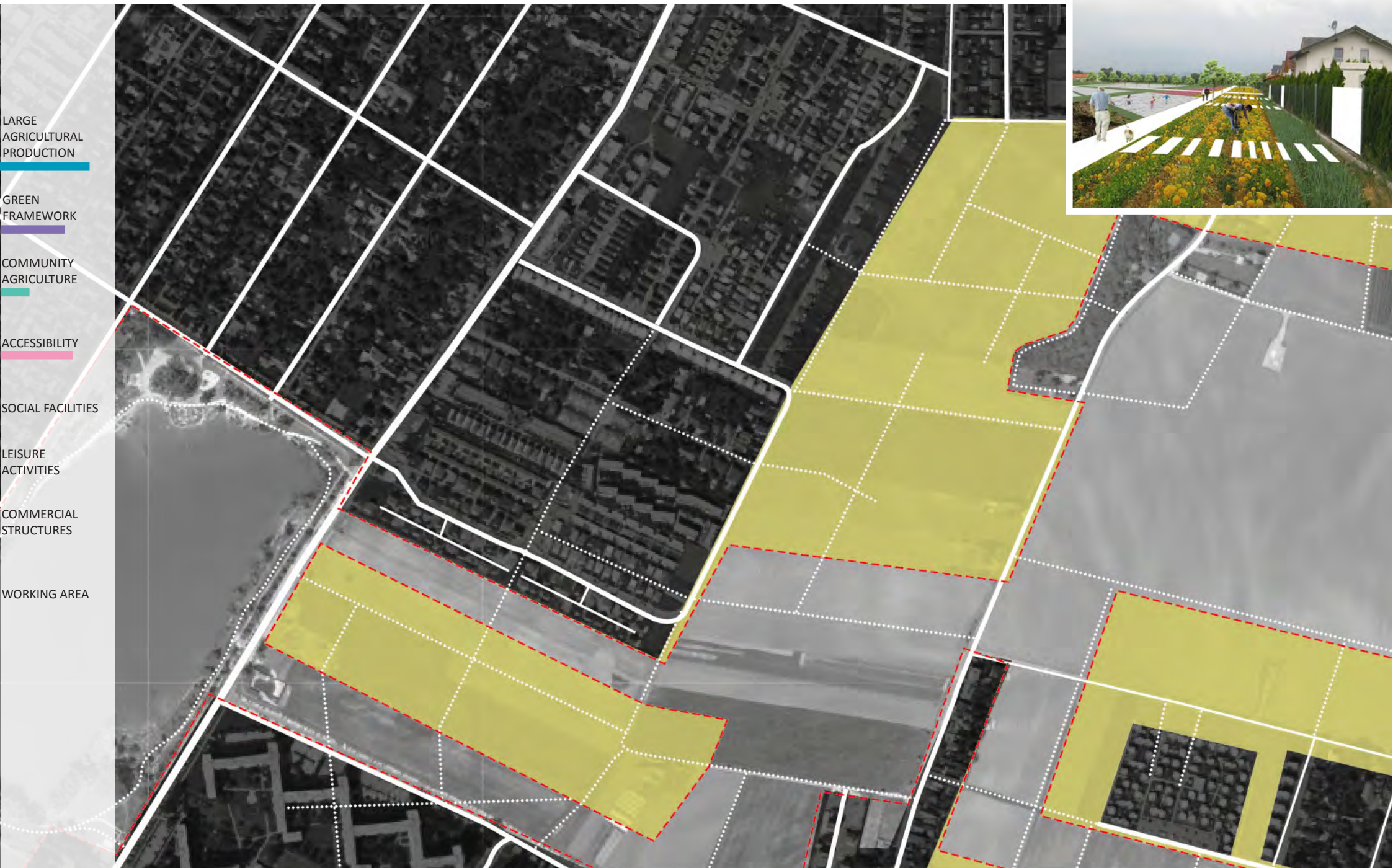
## TIME 1 - PERMEABLE/IMPERMEABLE LIMIT



REGULATION : PERMEABLE - 10% able to be built  
NON PERMEABLE - 70 % able to be built

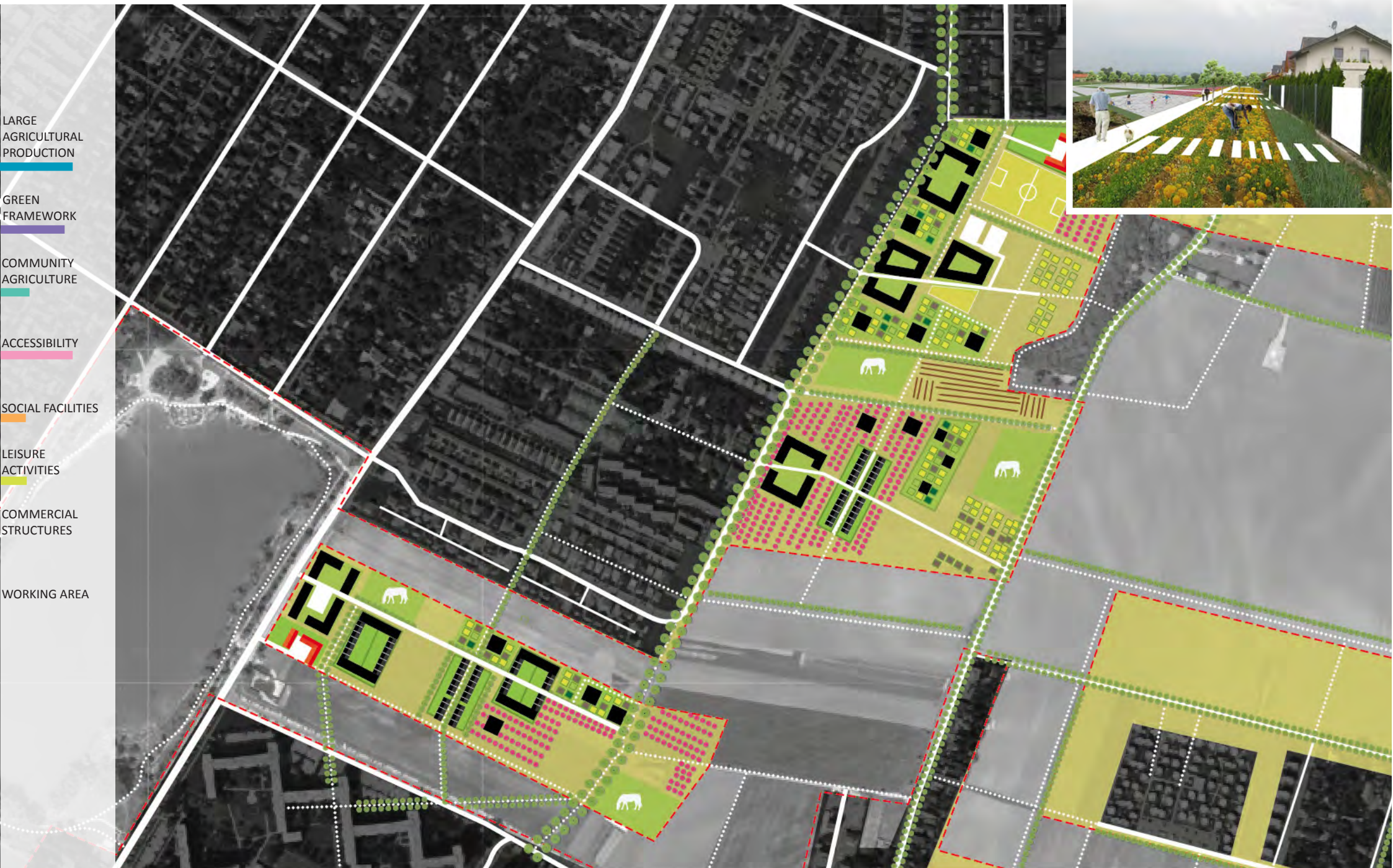


## TIME 2 - BRINGING ACCESSIBILITIES



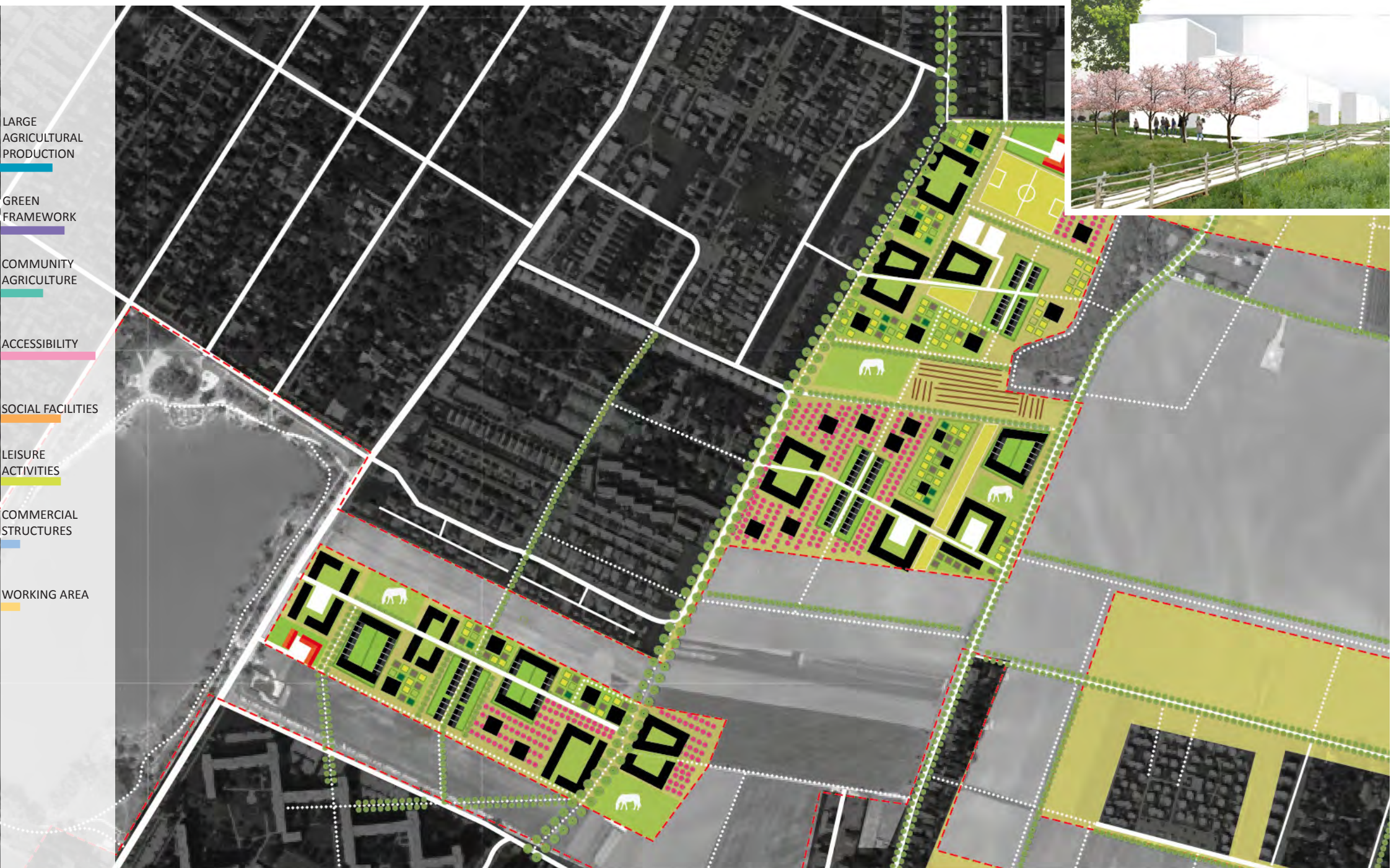


## TIME 3 - HOUSING AND USES - FIRST DEVELOPMENTS





## TIME 4 - HOUSING AND USES - DEVELOPMENT





# TIME 5 - TERRITORIAL EXPANSION







**KEEPING PERMEABILITY : SOIL - VIEW - USES**





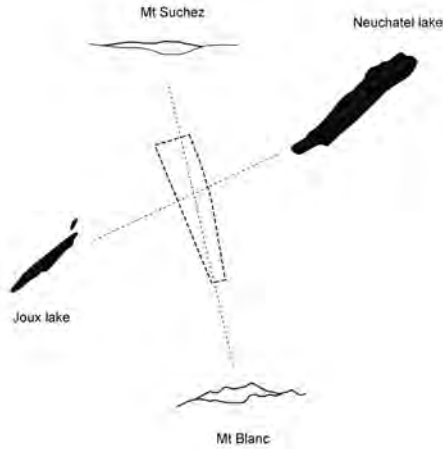
**KEEPING PERMEABILITY : SOIL - VIEW - USES**

## **TOPIC 4 – COMMON RESOURCES AND MUTATION**

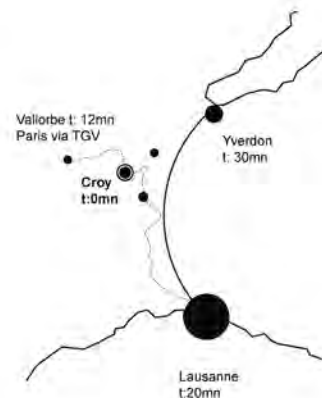
**WINNING PROJECTS EUROPEAN 11 ON THE TOPIC LINKING WITH USES**



ROMAINMÔTIER (CH)  
Vincent Arné (Fr), Aude Mermier (Fr)  
**Built edges / Garden-metropolis**



WIDE LANDSCAPE



GARDENED METROPOLIS



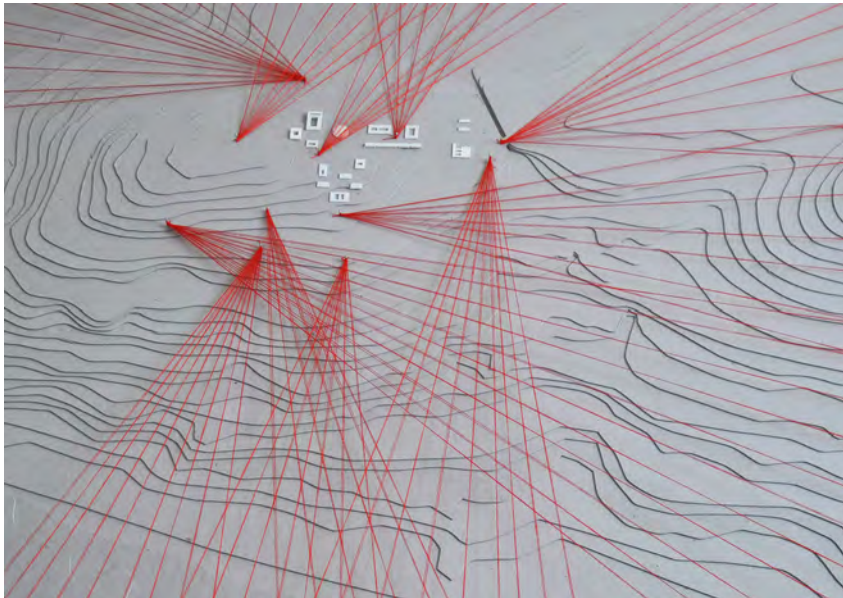
CLEARING: INNER LANDSCAPE



+



Reims (FR)  
Amélie Fontaine (Fr), César Vabre (Fr), Madeleine Clavel (Fr)  
**Landscape beyond limits**

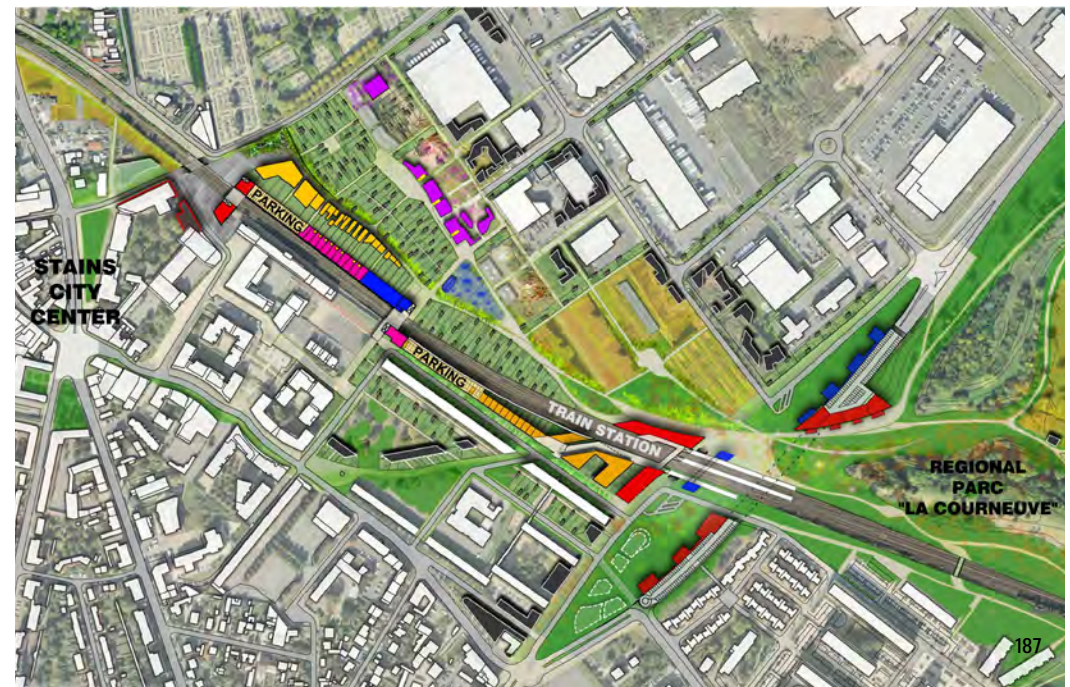
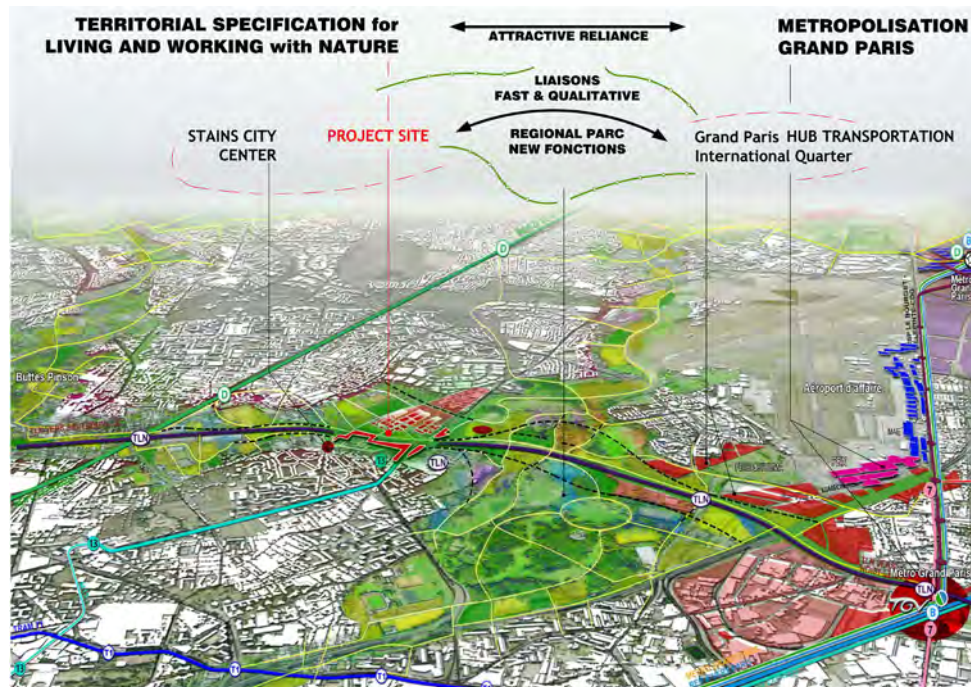




STAINS (Fr)

Tanguy Mallier (Fr), Claire Klinger (Fr)

Linking live from earth to the city

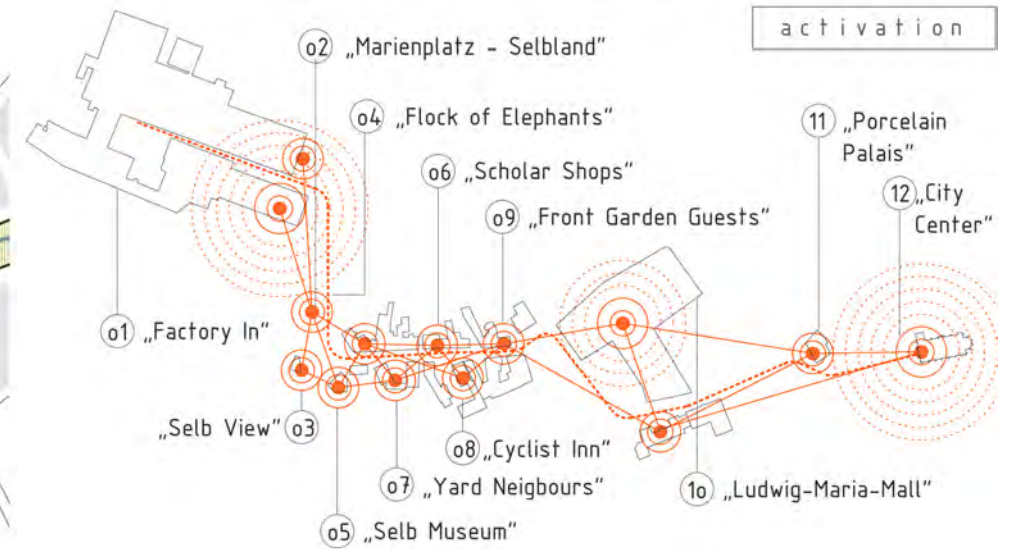
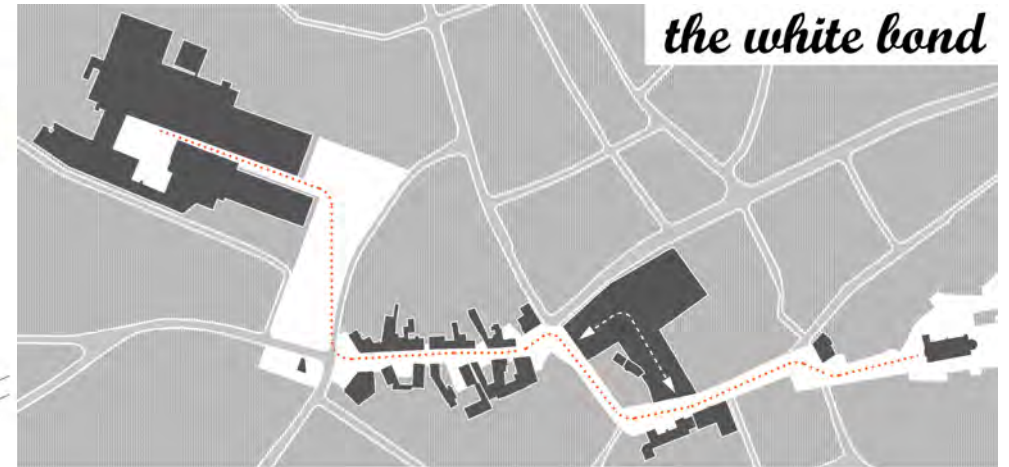




SELB (DE)

Alexa Bodammer (De), Christoph Richter (De), Jan Trutz (De), Roland Züger (Ch)

## Selbland





PORVOO (FI)

Jouni Heinanen (FI), Valterri Heinonen (FI), Pia Sjöroos (FI)

## Embroidery





IBBENBÜREN (DE)

Giovanni Santini (IT), Andrea Karimkahn (IT), Alexandros Liaskovitis (GR), Rosa Romano (IT)

**lanus**

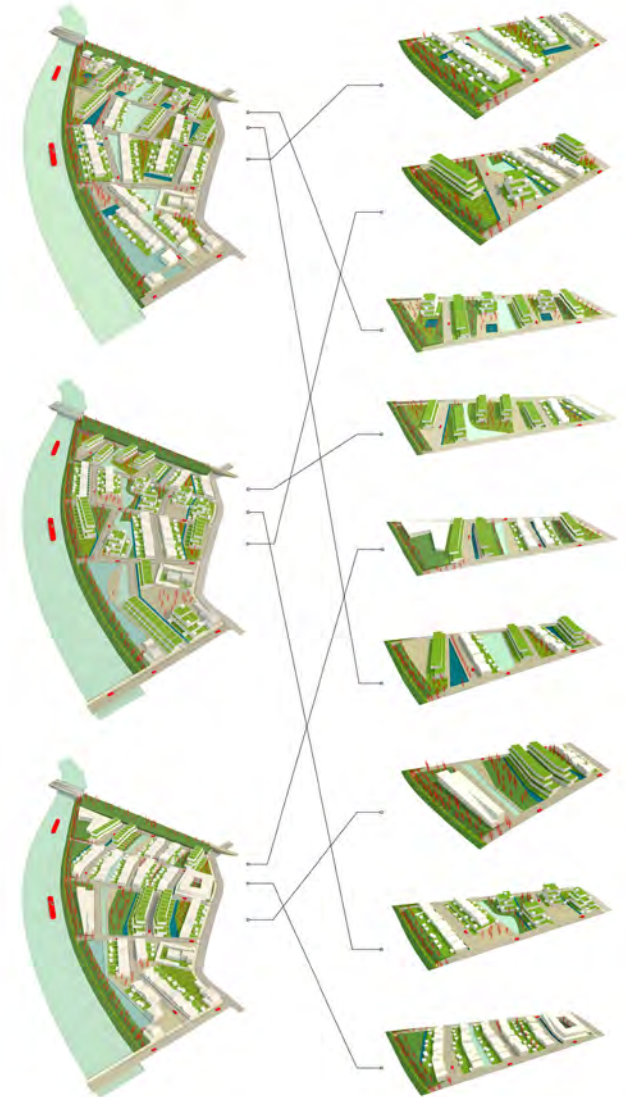
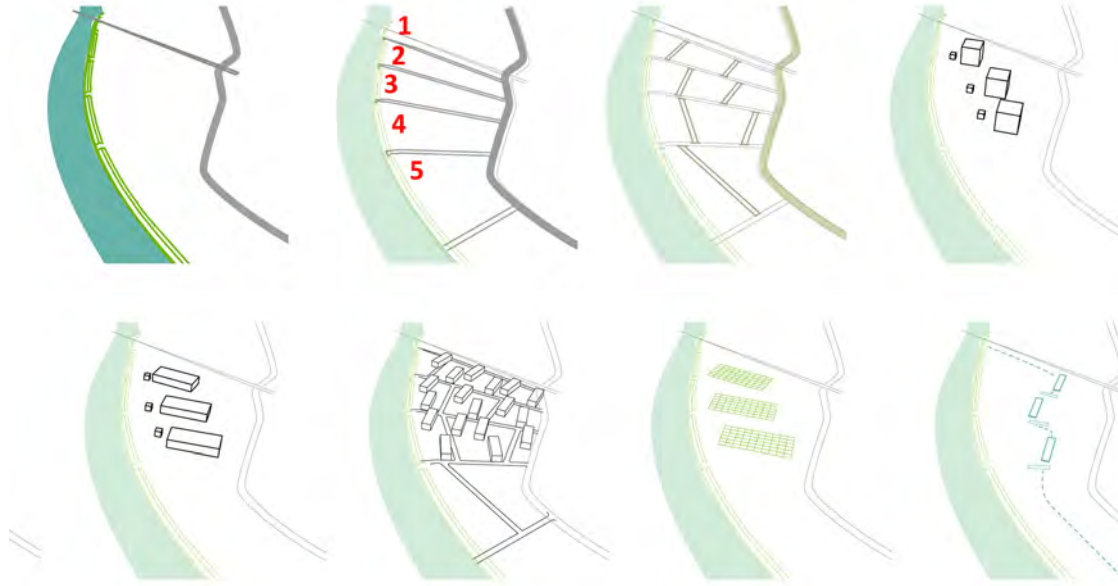




SAMBREVILLE (BE)

Benoit Coulondres (Fr), Florence Gaudin (Fr)

QCM



## GUIMARAES (PT)

Daniel Duarte Pereira (PT), Fernando Ferreira (PT), Gabriela Silva (PT), Sara Ferreira (PT), Daniel Macedo (PT)

### IN BETWEEN PLACE'S TIME



Pre-existing



1<sup>st</sup> STAGE  
Seeding Structure



2<sup>nd</sup> STAGE  
Program\_Silvaes Forum



LEEWARDEN (NL)

Alina Lippiello (IT), Leonardo Zuccaro Marchi (IT)

**Floating Blocks**

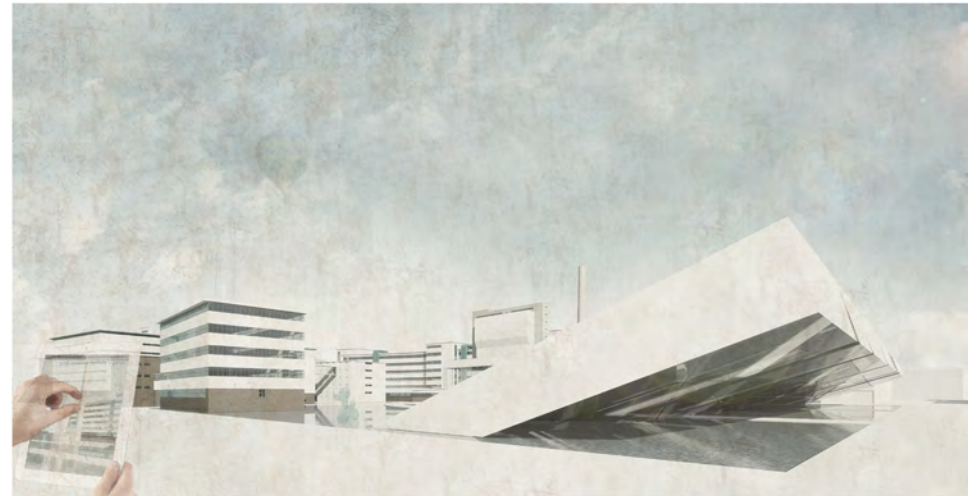
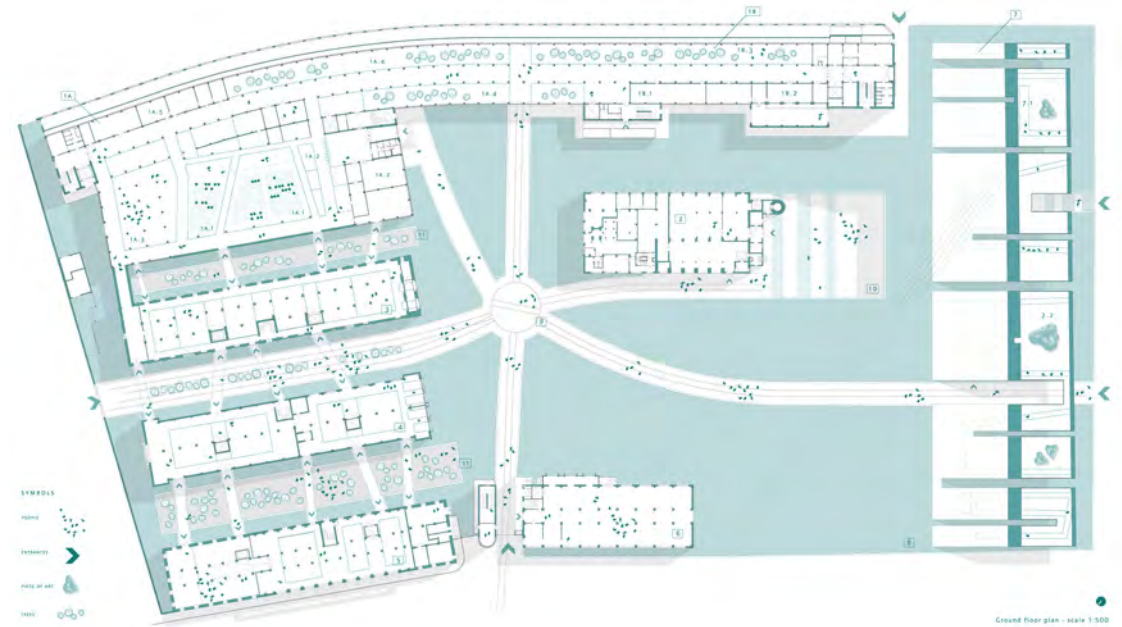




LINZ (AT)

Francesco Fusaro (IT), Marcello Galiotto (IT), Marco Montagnini (IT), Nicola Montini (It), Alessandra Rampazzo (IT), Gian Luca Zoli (IT)

## Urban Monolith





ALMERE (NL)

Olaf Janson (NI), Joost Maatkamp (NI), Rens Wijnakker (NI), Koen Looman (NI)

**Envisioning Baucis, Observatory for an Artificial Wilderness**

