



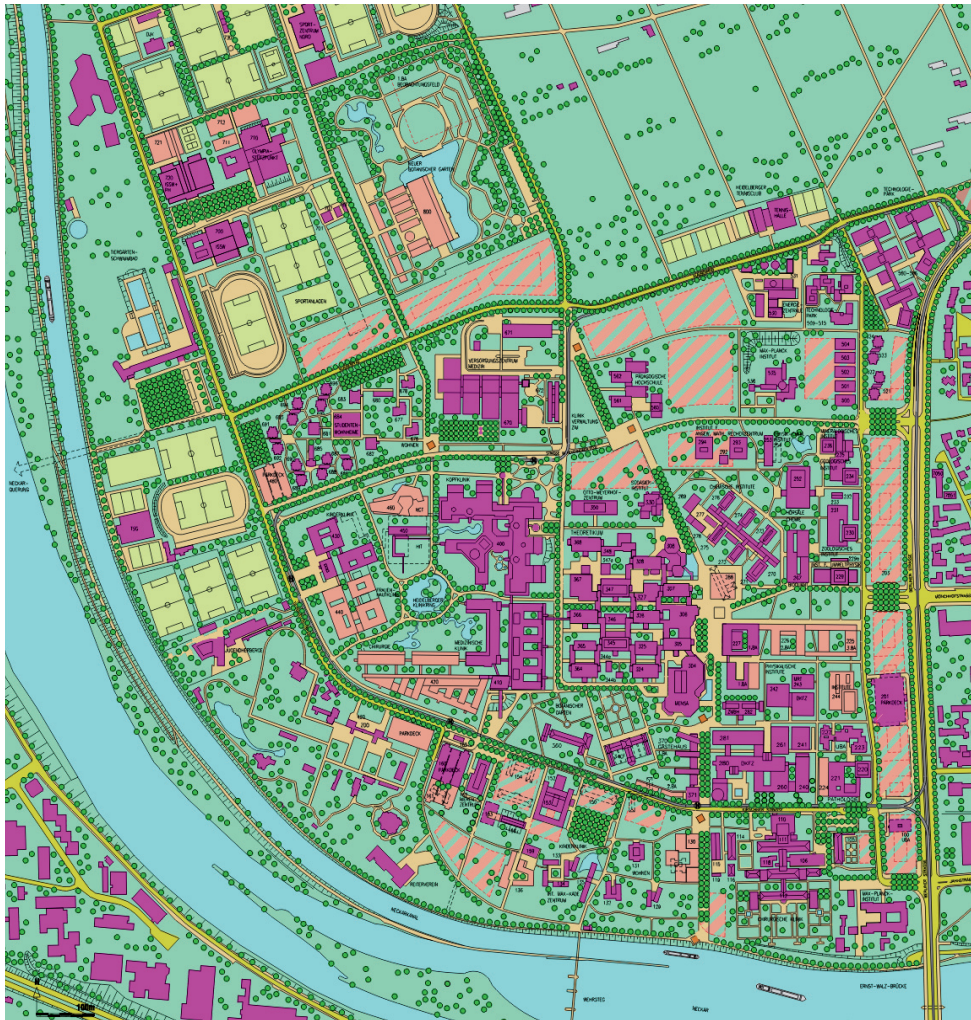
CATEGORY urban/architectural/landscaping
LOCATION Heidelberg/Campus am Neckarbogen
POPULATION 150,000

STUDY SITE 59,6 HA
SITES OF PROJECT 24,4 HA

SITE PROPOSED BY City of Heidelberg
OWNERS OF THE SITE diverse ownership
COMMISSION AFTER COMPETITION
Study site: urban master plan
Sites of project: realisation of individual projects

TRANSFORMATION OF THE SITE
Under the motto “City on the River” the City of Heidelberg is pursuing the planning goal of upgrading the area between the river and adjoining development in respect of landscape, function and urban design, at the same time integrating the zone along the river with the impressive landscape. An equal role is played by the layout of the open space at the sensitive interface between the Campus and riverfront and the southern flank of the university buildings and their architectural design. The aim is to create a Campus boulevard in a north-south direction, ending at the River Neckar. Innovative ideas are called for as to how the Campus – an important feature of Heidelberg – should present itself to the river.

CITY STRATEGY
Together with “Bahnhofstadt”, the “City on the River” project is Heidelberg’s largest urban development project. In the coming years the City of Heidelberg proposes to reopen the Old Town on the south side of the Neckar to the river. The broader urban strategy is to retrieve the public open space on the Neckarbogen from its anonymity and transform it into an urban space integrated into the recreational zone that stretches along the north side of the River Neckar almost through the entire city. The “City on the River” project is of pivotal significance for the quality of leisure and life, and for the identity and image of Heidelberg overall.



SITE DEFINITION

The Neuenheimer Feld Campus is located north of the Neckar not far from the city centre. The Altneckar and Neckar Canal make a broad sweep alongside the Campus, zoo and diverse sports facilities. Notwithstanding its high landscape potential, the public open space along the Neckar Canal was not the focus of city planning due to functional barriers and lack of space availability. The proposed relocation of the riding club, possible extension of the zoo and increased building activity of the university present an opportunity to redesign this interesting zone.

NEW URBAN MOBILITY

Of special significance is the improvement of the connecting paths to and from the river and the physical enhancement of the latter. How can – taking into account the existing barriers – meaningful connections be realised between Campus and Neckar? How can the Campus area be connected to the major pedestrian link over the Wehrsteg?

NEW SOCIAL LIFE

The aim of the competition is to create a neighbourhood centre by physical consolidation which will give the residents a piece of urbanity aside of the conventional “city life” in the historic parts of the city.

target planning of the university
origin: Universitätsbaumeister



Constructions in the southern part of the University Campus

top: student hostel INF 135

left: International House

right: International Max-Kade-Haus

Photos: Joest, Walter und Partner, Heidelberg

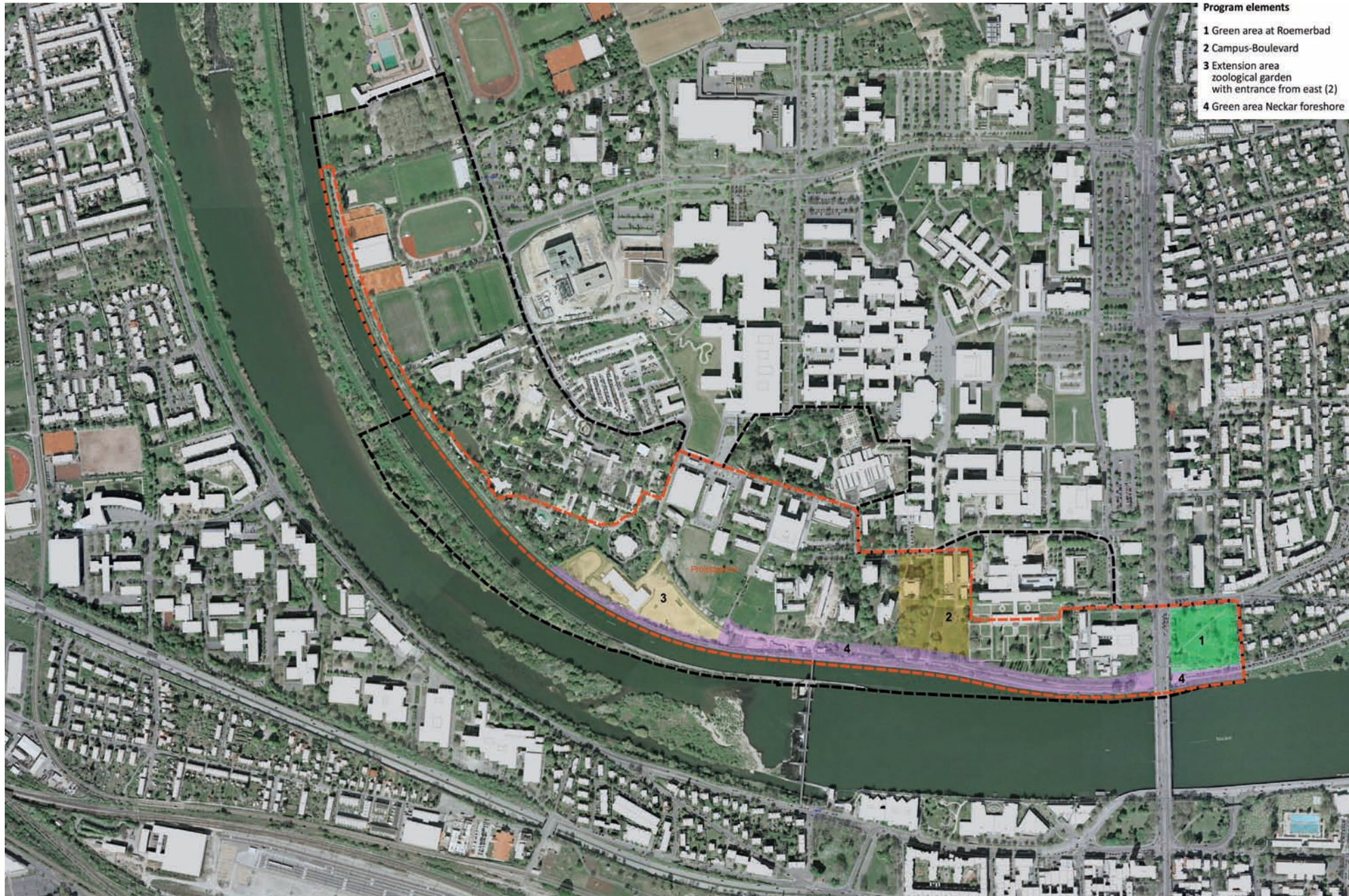
NEW SUSTAINABLE ENVIRONMENT

At the initiation of the zoo and university, in the design of the space on the Neckarbogen urban and landscape planning elements with a scientific topic – biodiversity – are to be interwoven structurally and didactically in the “Campus or Field of Diversity” in consideration of the adjacent FFH („Flora-Fauna-Habitat Directive“ a nature preserve). In this way Heidelberg’s claim as a city of science is also to be reflected in a city and landscape planning context.

Heidelberg – Deutschland – european 10

Program elements

- 1 Green area at Roemerbad
- 2 Campus-Boulevard
- 3 Extension area
zoological garden
with entrance from east (2)
- 4 Green area Neckar foreshore



Study site (black), site of project (red) with different elements of program



Altneckar, dam crest of Neckar Island and Neckar Canal



Neckar foreshore with the southern part of the University Campus



Green area at Roemerbad



Road axis of the future Campus-Boulevard with the University's guesthouse in the background