



CATEGORY
territorial/urban

LOCATION Zagreb Tromostovlje

POPULATION 800 000

STUDY SITE 21,2 ha **PROJECT SITE** 17,8 ha

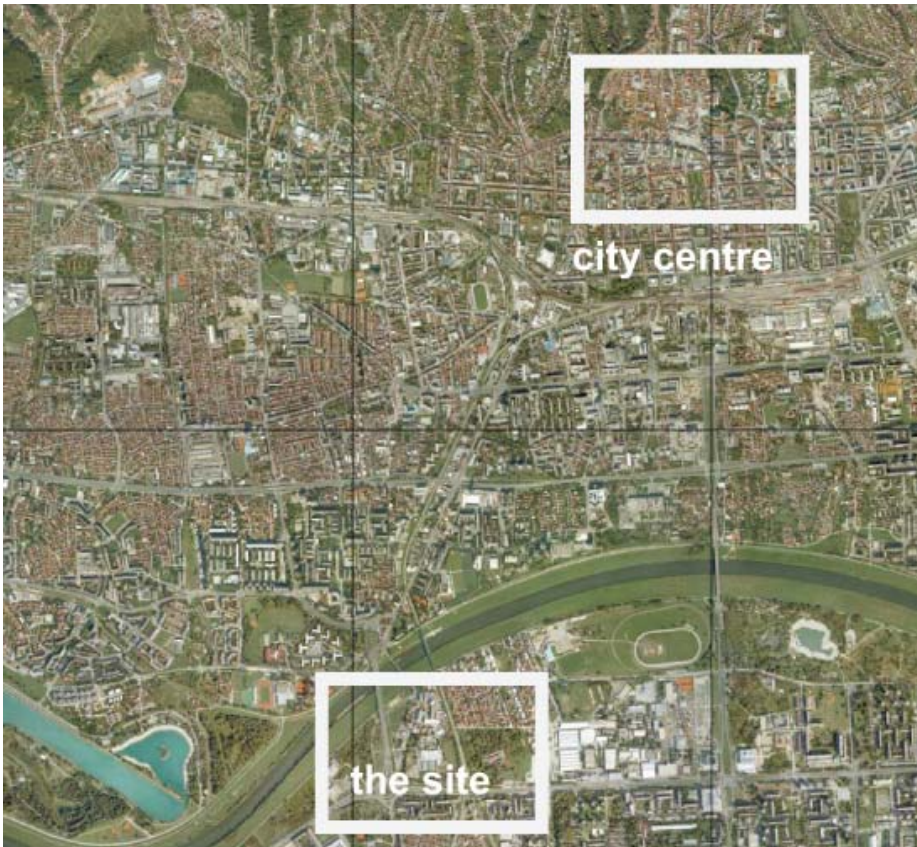
SITE PROPOSED BY City of Zagreb

OWNER(S) OF THE SITE City of Zagreb, private owners

COMMISSION AFTER COMPETITION:
The winning project will serve as a basis for a detailed plan, leading to construction.

TRANSFORMATION OF THE SITE
The area is located in the new quickly developing part of the city, with the increasing need for public space and quality public transport. The project site will comprise of new mixed use development and public space gravitating towards the river Sava, and a new intermodal/park and ride station and new public space is planned in the study site. The aim is to create **A NEW DEVELOPMENT GIVING LIFE TO A DORMITORY TOWN**, with sufficient public space and open green space.

CITY STRATEGY
Zagreb is developing into a metropolis, and its metropolitan area presents a significant influence for the wider region. The city of Zagreb aims towards cooperation with other regional centres, particularly Split, Rijeka and Osijek. New political circumstances of transition have failed to create a link between city planning and land resources management. The city must provide land for construction of public use buildings (schools, kindergartens, streets, squares parks) as well as for subsidized housing.



SITE DEFINITION

The site is south of the Sava river, on the north western edge of New Zagreb, a new part of the city planned in the 1950s and 1960s over former rural and agricultural areas.

Today the unbuilt spaces of New Zagreb are in the process of filling up, and it is necessary to preserve a functional mix.

The site is named after three bridges on its northern border: the old pedestrian bridge, railroad bridge and motor traffic bridge. On the western part of the site is an empty space on which high rise office buildings are planned. On the east is a mixed use area, destined for urban renewal - residential use, and on the south is the largest

area, on which public use is planned (entertainment and leisure, with large open spaces and green areas). On the north is a mixed use public space linked to the river, and administrative building of the Zagreb county.

NEW URBAN MOBILITY

A new intermodal/park and ride station (train, bus and motor vehicle) is planned on the site, connected to another station of lesser capacity across the river.

NEW SOCIAL LIFE

New Zagreb has been a "dormitory town" for decades, but is now on the way towards programmatic enrichment. The public and leisure

spaces, as well as the new intermodal/park and ride station are providing a centre of activity in this part of the new town. In the vicinity are international schools and kindergarten, the new handball arena, the Trade fair and the employment centre for the handicapped.

NEW SUSTAINABLE ENVIRONMENT

The site is physically connected to a greater green area along Sava river. Environmental issues are addressed through enhancement of public transport with the introduction of park and ride system, as well as through environmentally friendly mobility (cycling, pedestrian traffic).

Zagreb – Hrvatska – europa 10





aerial view of the bridges



view from the south



view of the NASIP



view of the railroad