

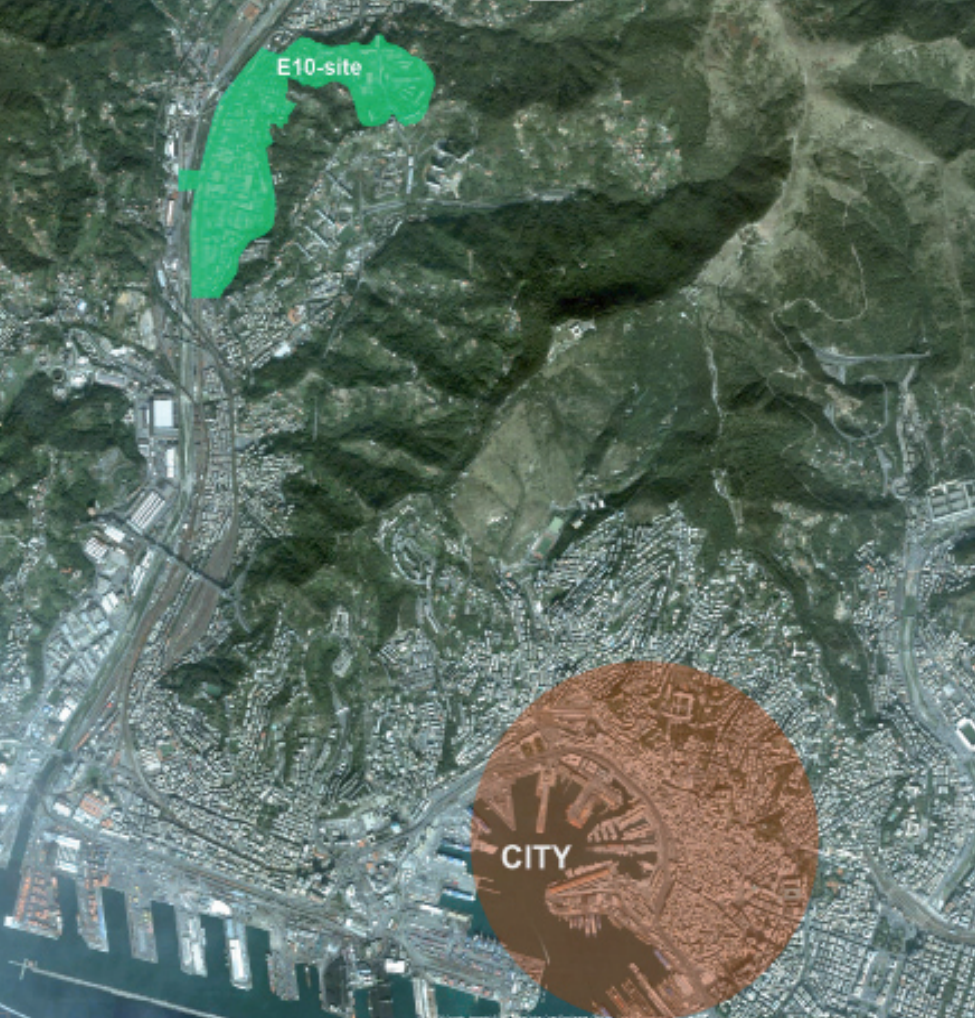


CATEGORY: urban/architectural
LOCATION: Begato-Rivarolo
POPULATION: 35 000
STUDY SITE 80,00 ha
SITE OF PROJECT 16,00 ha
SITE PROPOSED BY Municipality of Genova
OWNERS OF THE SITE Municipality of Genova and Private Property
COMMISSION AFTER COMPETITION
study of faisability and implementation according to the private property

TRANSFORMATION OF THE SITE
Rivarolo, together with Bolzaneto-Pontedecimo, forms the Val Polcevera district. Its territory, represented by old rural areas, at beginning of 1900, have been a demographic expansion. During the 80's-90's, the social living settlements in the urban unit of Begato bring an increase in population, characterised by the concentration of many families carrier of social problems and discomfort. Starting from the 70's, the industrial crisis generates wide wasted areas and, from the 90's, the small and medium enterprises, the shopping centres and the sports facilities replace the large industries. Reorganisation of the area aims to connect the settlement of public housing to the district of Teglia by realising a system of services situated downstream, also by remodelling the soil. The location of the families in the former washing powder factory Mira Lanza, together with new functions in the sites, will define a new vital center in the district.

CITY STRATEGY
In 2007, a planning document was developed to implement the new Municipal Urban Plan, by identifying activities, functions and organisation tools. The starting point has been the definition of the Concept of City based upon criteria of improvement of identity and sustainable development. Such plan refers to the programmatic guidelines of the Municipalities, organised into five programs:

1. new methods of government
2. the well living city
3. the creative city
4. the accessible city
5. the sustainable city



SITE DEFINITION

Begato originates in 1984 from the social housing, called Diga rossa (red dam) (277 flats). The project had foreseen a complex dipped into an urban park with shops along the passageways, never completed. In few years, the Diga bianca (white dam) (further 277 flats) and buildings add on, for a total of 1600 lodgings. The inhabitants wish to live in a vital quarter. For Begato, the PUC (municipal urban plan) splits the area into two sectors where plans the realisation of an integrated centre for public services, urban connective and commercial activities, the creation of a residential plot and the redevelopment of the existing buildings. Moreover, it should be planned a system of terraces to be outfitted with greenery and public services in order to encourage the integration of the quarter with the area of Tegliia (downstream). The area called “former Mira Lanza” is between the left bank of Polcevera

stream and via Rivarolo. It’s occupied by a complex of disused industrial buildings which can be demolished, except for the building overlooking the railway line. The area has a sufficient road system that must be improved in the part of via Lepanto and in the connections between the new road of bank and via Rivarolo. The destinations of the approved PUC foreseen functions in all sectors: residences, public services and parking, secondary road network, shops and advanced tertiary.

NEW URBAN MOBILITY

The site mobility system is already well-established. It’s interesting to study an hypothesis to connect Begato with the near system of ancient Bloc-khouses to increase the value of historical and landscape heritage of the area. Concerning Rivarolo, among the development hypotheses related to the site there is the possibility to create a metro stop on the railway line, in view of its transformation, into an urban light rail.

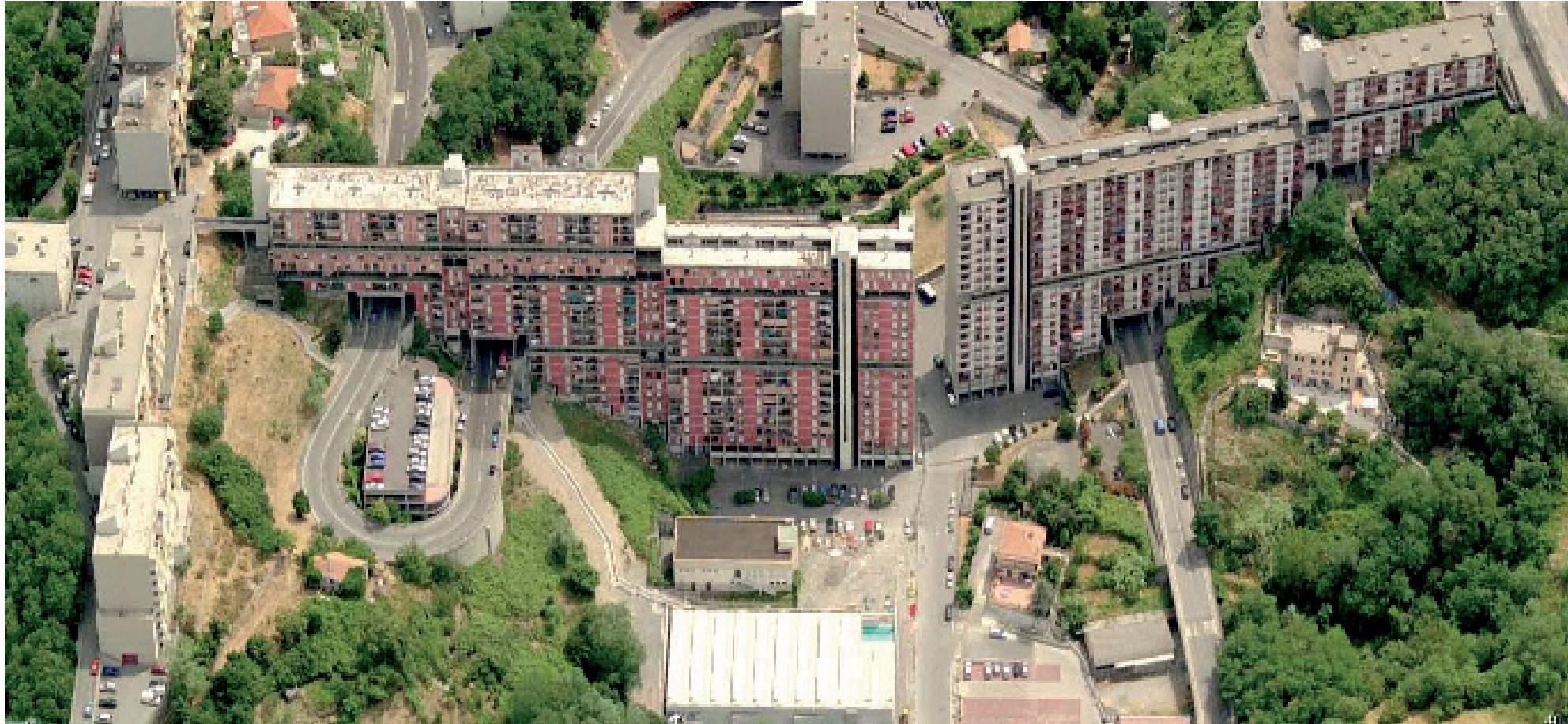


NEW SOCIAL LIFE

The problem of the social decay needs a multilevel intervention. Among different hypothesis, the thinning out and the social mix, by reducing the existing volumes and by operating on height or width. A great importance is represented by the social role involving the transformation of the area. The setting-up of trade activities, tertiary and public services will allow to realise a vital core of district where the existing social services could be operate.

NEW SUSTAINABLE ENVIRONMENT

One of the themes of the Val Polcevera PRUSST (*programs of urban and sustainable redevelopment of the territory*) is the sustainability of the urban fabric for recovering the landscape and the open spaces available for the community, for offering available services to the citizens, for rethinking and rationalising the different infrastructures of the city. The reconversion of the site should consider the innovations as for bioclimate and energy.



Perspective view of Begato 9 and old-Miralanza factory

Genova – Italia – european 10



1_Public spaces in Begato 9, 2_ view from the «diga» to the landscape, 3-4_Old-Miralanza factory interiors spaces