

**CATEGORY**

Urban/Architectural

LOCATION

Campo Grande – Lisbon

POPULATION 564.000**STUDY SITE** 46 ha **SITE OF PROJECT** 9.5 ha**SITE PROPOSED BY** Lisbon City Council (LCC)**OWNERS OF THE SITE** LCC and private owners**TYPE OF ORDER AFTER COMPETITION**

Award of contract for the elaboration of a Detail Plan for the Site of Project

TRANSFORMATION OF THE SITE

A new avenue will give continuity to the radial development of city's central axis, clearly structuring the urban fabric and making the connection between the centre and northern part of the city. The conversion of a degraded area based on the creation of a strong urban image will have a regenerating effect on the local environment and contribute to unifying the grid and, consequently, the image of the city, helping to mitigate the effects of the barrier generated by the "Segunda Circular" ring road around Lisbon.

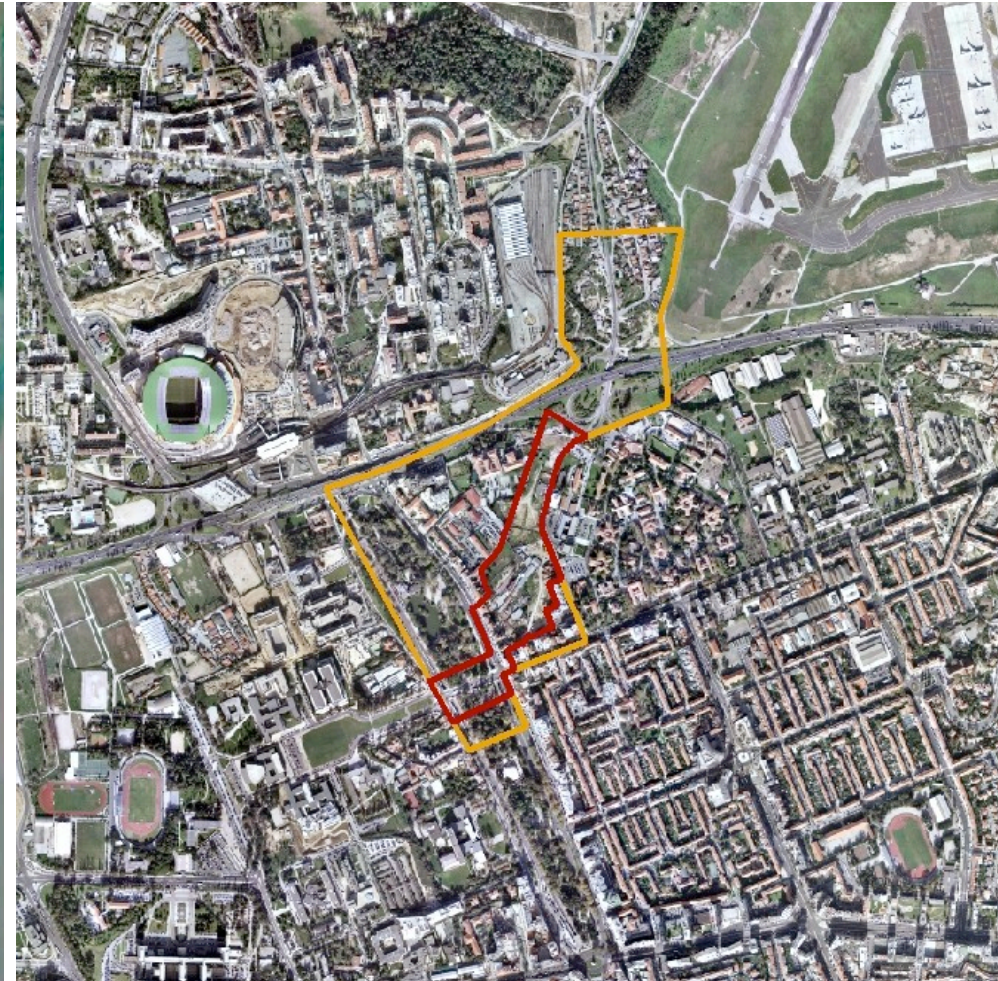
Integration of a public transportation corridor is planned, including a light rail line that will directly serve the new neighbourhood of Alto do Lumiar, bringing this peripheral area closer to the centre of Lisbon.

CITY STRATEGY

The project for the expansion of the Lisbon's central radial axis has been on the table for more than 30 years. The opportunity for intervention in this expectant area has recently gained in momentum because of its association with the large-scale intervention to the north of the 2nd ring road and west of the airport, in Alto do Lumiar.

This is an area with characteristics that favour the establishment of new activities and functions of municipal and supra-municipal importance, taking into account its context of relative proximity to the centre of Lisbon and its strategic importance for polarisation at the regional level.

With a view to improving the urban environment, the aim is to create continuities through the linking of green spaces and the promotion of pedestrian mobility in conjunction with a strategy for improving mobility in general in the city.



SITE DEFINITION

Next to the “Segunda Circular” ring road in Lisbon, the physical presence and heavy traffic flows of which separate the central area of the city from the northern area in the vicinity of the airport, where a new residential area is emerging, Alto do Lumiar.

NEW URBAN MOBILITY

The expansion of the city's radial axis and the construction of a public transportation corridor, including a light rail line, and improvement of the pedestrian and cycle mobility conditions provide the ideal opportunity for the creation of a new attractive centre.

NEW SOCIAL LIFE

This is, from the outset, a privileged zone in the city, with multiple facilities and infrastructures in the immediate surroundings, which generate important social dynamics. The aim is now to extend the social and economic dynamics to the south of the ring road northwards through continuation of the “tertiary axis” made up of Avenida da Liberdade, Avenida Fontes Pereira de Melo, Avenida da República and Campo Grande, connecting to the new centralities to the north of the ring road. Tertiary activities (commerce and services) play a stimulating role in social and economic terms, while the housing will contribute to a richer and more lasting spatial experience.

NEW SUSTAINABLE ENVIRONMENT

Strengthening the ecological structure of the city is necessarily a premise of the project to be carried out. The bifurcation of the green “corridor system” from the new avenue will contribute to this. Although with differentiated characteristics along the route, it should guarantee a phytological continuum – from the revitalised garden of Campo Grande to the Alto do Lumiar urban park.

In this context, one should highlight the importance of improving the conditions of pedestrian circulation in the whole study area, to which should be allied the integration of a cycle corridor.

Lisboa – Portugal – europan 10



Aerial view of the site



1 - Intersection of Avenida do Brasil and Campo Grande

3 - View of the eastern boundary of the Site of Project

2 - View of Campo Grande – inharmonious construction

4 - View of the Site of Project looking north-west