



Site des Anciennes Aciéries

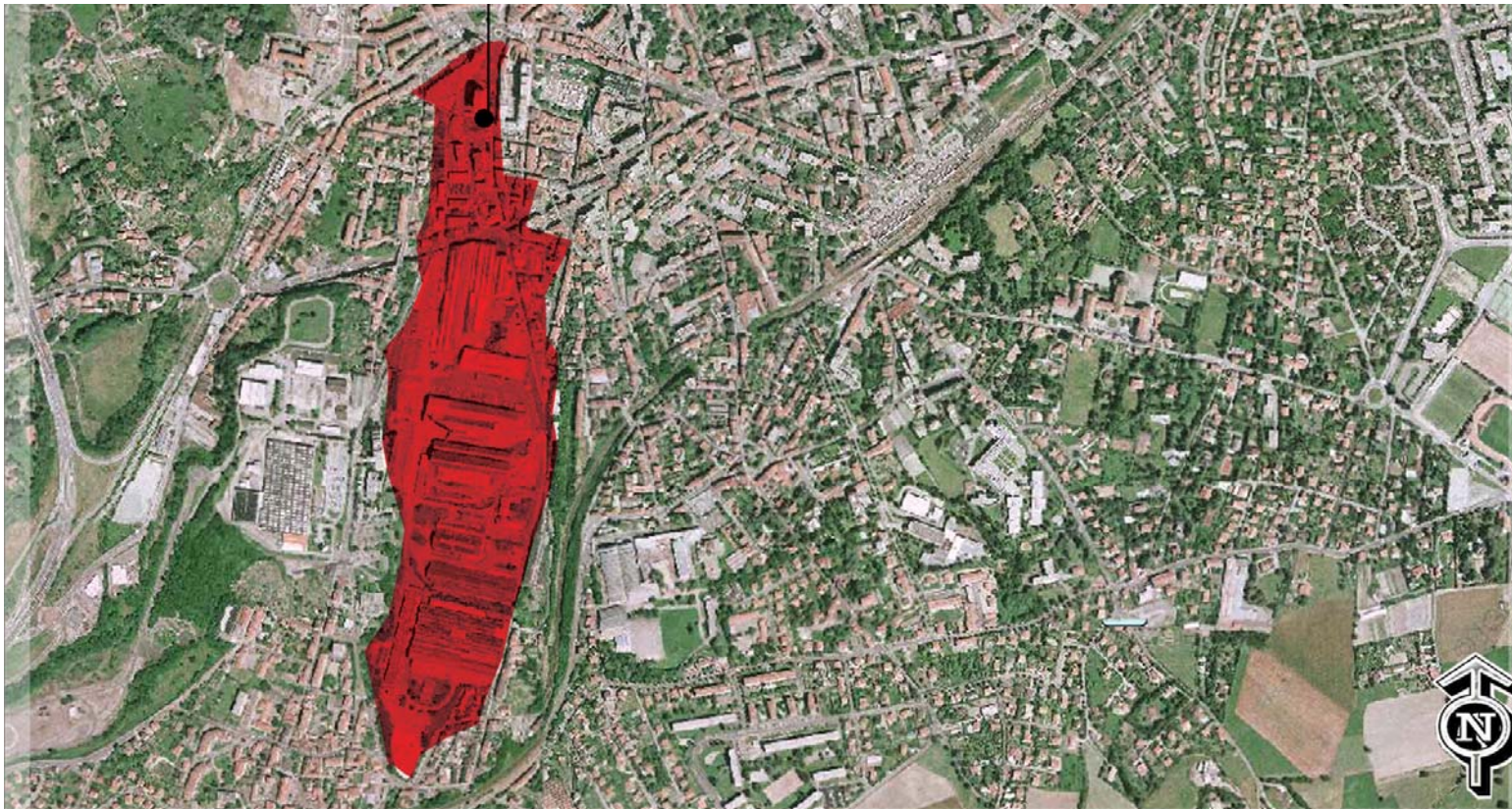
City	Saint-Chamond
Location	Anciennes Aciéries
Population	35 000 inhab
Study site	28.3 ha
Site of project	6.8 ha

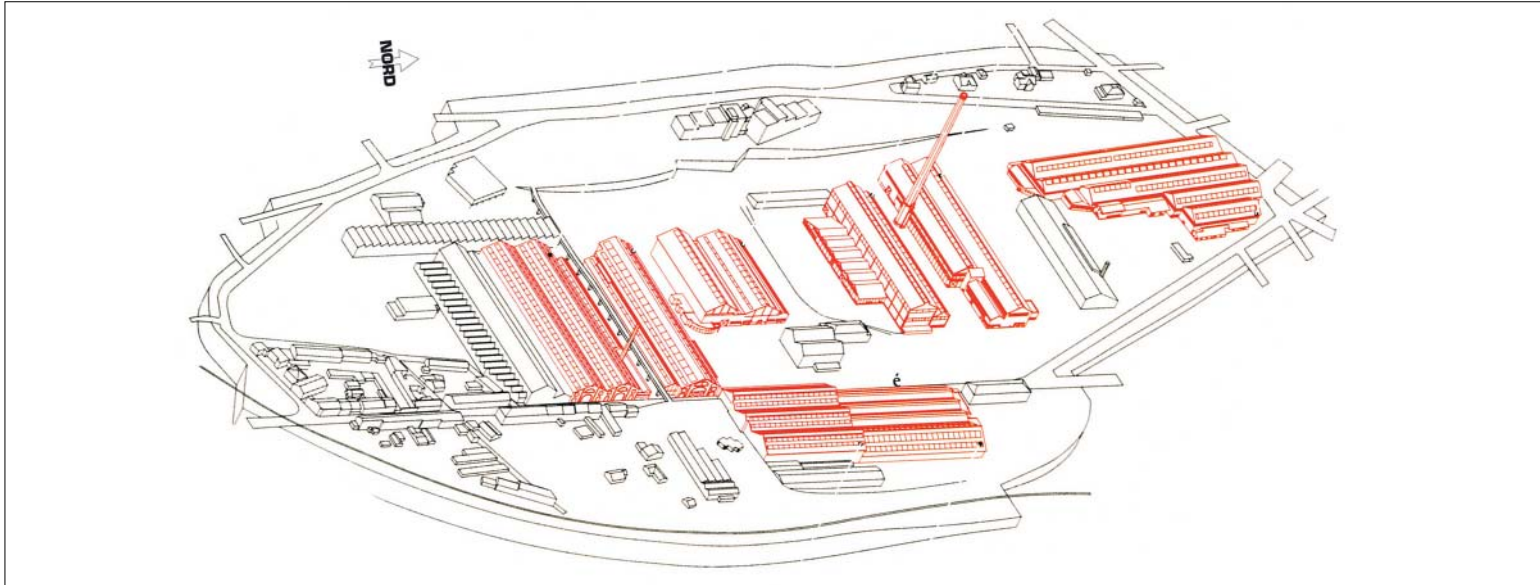
TOPIC

In Saint-Chamond, the "Anciennes Aciéries" (old steelworks) site, now an industrial wasteland awaiting regeneration version, is situated in the Gier Valley, near the town centre, but entirely closed off from it. Regeneration will require its incorporation into the urban fabric. It needs to become a neighbourhood in its own right. Developing the northern part of the site by restructuring the urban fabric and building housing, will connect the site with the town centre. The southern part will accommodate infrastructure and activities, making use of the big factory workshops, which have the quality, despite the difficulty and cost of renovation, to make the site a new nucleus within the town. The whole site will be structured by a "green axis" running through the middle of it.

TERRITORIAL SCALE : CONURBATION

The Saint-Étienne conurbation, of which the town of Saint-Chamond is a part, has a population of 500,000 and is situated in the metropolitan area of Lyon. South of the town of Saint-Étienne, Saint-Chamond, the conurbation's second largest centre with 35,000 inhabitants, developed along the Gier Valley, a tributary of the Rhône which links the conurbations of Saint-Étienne and Lyon. An industrial area that experienced a serious economic crisis in the 1980s, the St. Etienne conurbation has since been implementing a process of economic and urban transformation. This continues today with the conversion of the last big industrial production sites in Saint-Chamond and Saint-Etienne, and the town is seeking to enhance its appeal by creating major cultural amenities (the Zénith designed by Norman Foster, Cité du Design designed by Finn Geipel, the Le Corbusier site at Firminy).



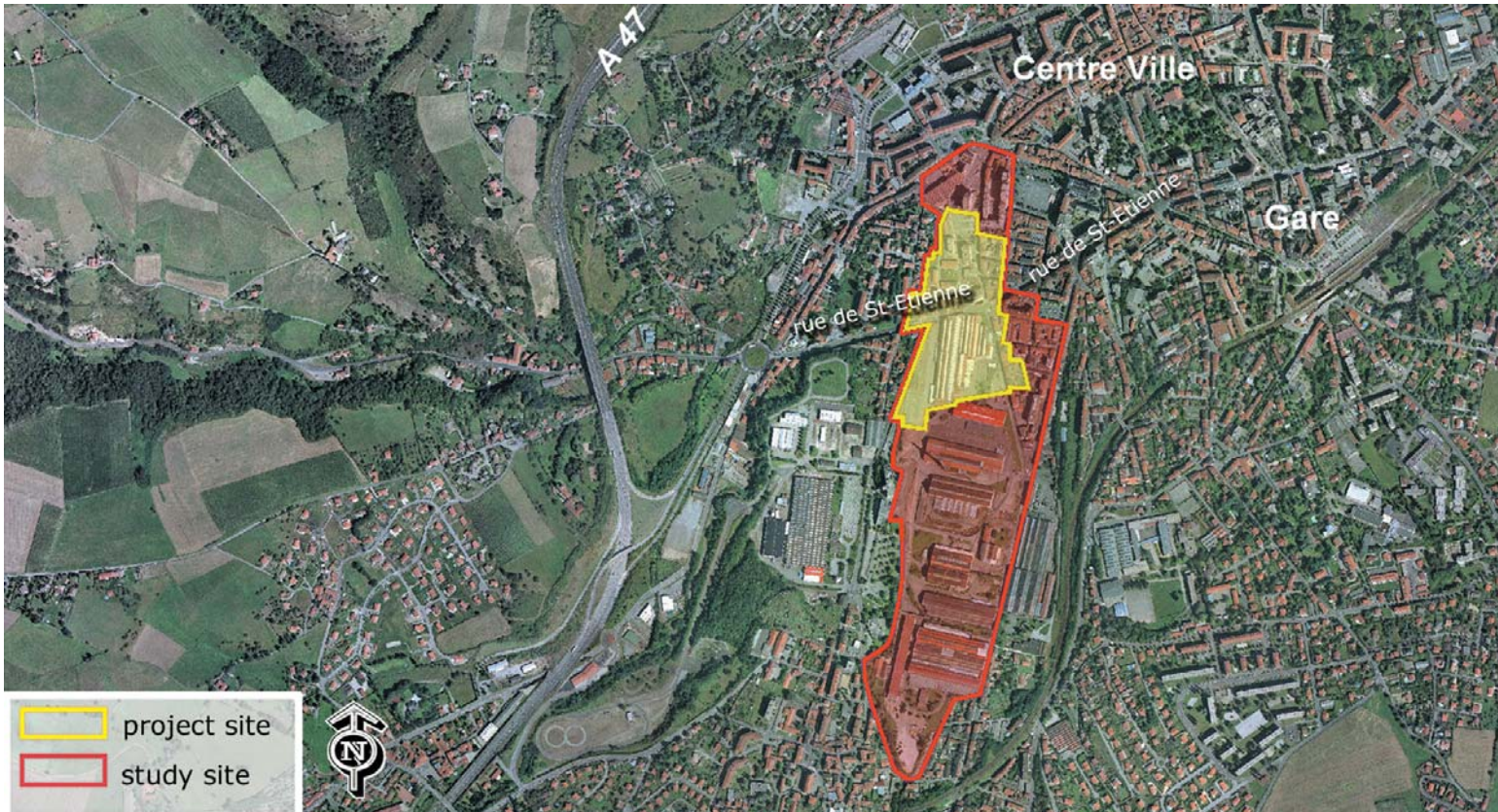


URBAN SCALE : STUDY SITE

The study site is a 28.3 hectare zone southwest of Saint-Chamond town centre, in the Gier Valley right at the entrance to the Pilat Regional Natural Park. A typical example of 19th-century urban extensions, its southern part consists of an industrial sector called "Anciennes Aciéries" (old steelworks), made up of big workshops undergoing partial conversion, and its northern part is a disparate area that links the site to the town centre.

Programmatic intentions

The objective of refurbishing the site is to incorporate it into the town's urban system as a neighbourhood in its own right, structured around a north-south "green axis" linking the town centre (Rue de Saint-Étienne) to the Creux district and Pilat Regional Natural Park. The existing factory halls will be used for retail, sports and cultural activities, and public services. An indoor stadium seating 4000 people will also be built. A new interchange to the west of the site and a train station to the south will make the site more accessible.

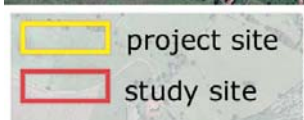


PROXIMITY SCALE : SITE OF PROJECT

The 6.8 hectare project site raises the question of the connection between the Old Steelworks and Saint-Chamond town centre, i.e. the northern part of the study site. This takes in workshop 01 at the extreme north of the Old Steelworks and the disparate urban fabric north of Rue de Saint-Étienne.

Programmatic intentions

The historic features - such as the retaining wall to the west, workers' housing estate or workshop 01, which will house amenities and service activities - are to be preserved, and will be surrounded by newly created public spaces. The refurbishment of the urban fabric between Rue de Saint-Étienne and the town centre, and the construction of 60 new dwellings, will help connect the Old Steelworks site to the town centre. Rue de Saint-Étienne will remain a major urban axis and the pedestrian/nonmotorised axis running through the neighbourhood will be extended southward.





Lathuillière workshop



Workers housing



Sandstone buildings



Gable of shed to be preserved



articulate on the north-south axis



Supporting walls along the western limit of the site



La rue St-Etienne (to the right the halle 01)



Buildings on rue Bonneviale

Rue Petin Gaudet

Les Monts du Pilat

Autoroute de Saint-Etienne



Place de la Liberté

Halle 01