

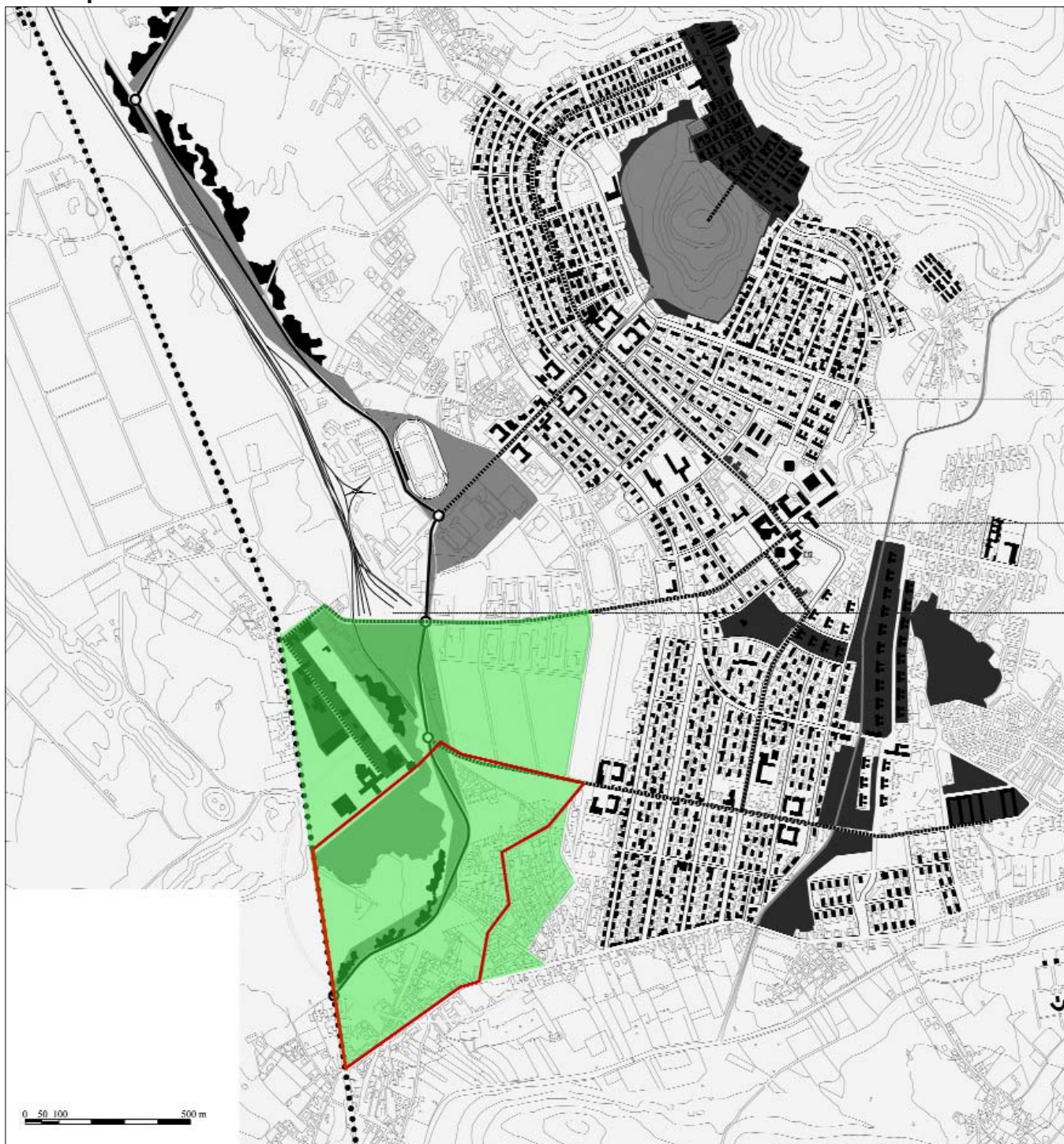
City	Carbonia
Location	South-west sector serbariu - is meis
Population	about 30.263
Study site	90 ha
Site of project	40 ha

TOPIC

The proposed case consists in the multifunctional integrated requalification of an urban outskirts having pre-existences of mining archaeology and residual historic settlements, with aspects of decay rising from the presence of unsolved margins and secondary functions. The area is limited and crossed by remarkable infrastructural elements, among them an outfitted link axis under implementation, which represents the most important chance of rationalisation of the town mobility. It is also an area inserted by the Municipality among those ones under "urban transformation", with a foremost component of public grounds where it's possible to build up opportunities of different uses

TERRITORIAL SCALE : CONURBATION

Carbonia is the "unfinished" capital of a mining district gone into a quick liquidation. The whole area is strongly marked by the mining presence, both as detractors and as potentialities. The huge deposit of history, knowledge, know-how and containers as for mining settlements inevitably represents one of the guidelines in the new urban order planning. During these years, Carbonia is facing new tasks deriving from its role of new capital of Sulcis Province.



URBAN SCALE : STUDY SITE

The study area including the site - the western sector of the town - represents the interface between the residential town and the mine: it holds the most important areas for culture and services, it's the principal domain of expansion of the urban outskirts and holds the main infrastructures of connection.

Programmatic intentions:

The programme is addressed to the reconstruction as to the quality of the south-western urban sector, an environment characterised by the relation between the foundation town and the "big mine" and by remarkable detractors, such as the mining dump and the disordered suburban expansion.

PROXIMITY SCALE : SITE OF PROJECT

The site is mostly composed by the suburban portion of the Serbariu mining settlement, a flat area still limited by small dumps of mining sterile, bordered and crossed by the main local infrastructures, the railroad and the main road. On the margins, the large buildings of the mine are under rehabilitation, while the suburban settlement (to be redeveloped) with its small historical core (to be rehabilitated) closes the site to the east.

Programmatic intentions:

The transformation of the areas will aim to improve the quality and sustainability of the urban environment, by the requalification of the margin of residential fabrics, the planning of a park and of some areas reserved to the accommodating facilities.

