

<b>City</b>	Genève
<b>Location</b>	Pointe de la Jonction
<b>Population</b>	190.000
<b>Study site</b>	11 ha
<b>Site of project</b>	3 ha

**TOPIC**

The Canton of Geneva is located at the southwestern tip of Switzerland. It is almost completely surrounded by France; its border with Switzerland is 4.5 km, while the border with France is 103 km long. The territory is mostly urban but includes a significant agricultural area. The Geneva International Airport serves all the French-Valaisan-Geneva area.

The Canton of Geneva is the densest territory of Switzerland with 112 inhabitants/hectare and it is the seat of many international organizations including the UNO, which gives it an international and multicultural personality. With its Opera house, its host of theatres and museums Geneva is a glamorous regional capital.

**TERRITORIAL SCALE : CONURBATION**

Geneva is the city-centre of a 700'000 inhabitants urban area.

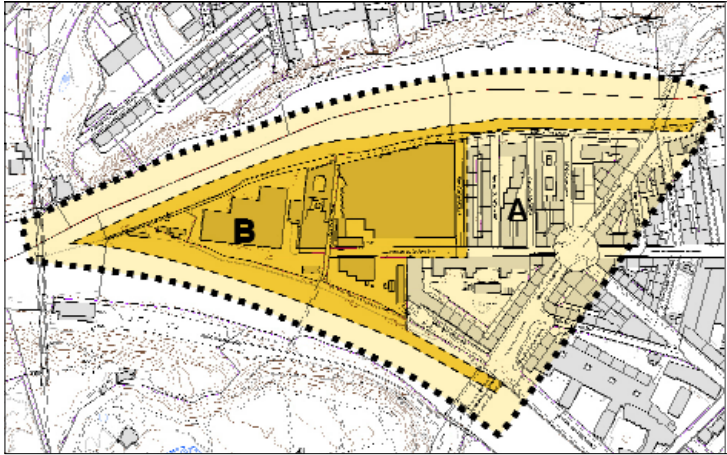
On a territory that spreads over 1'600 hectares, the city of Geneva provides more than 40% of the region's jobs and its population adds up to some 190'000 inhabitants.

The city is set on a site at the edge of the Lemane Lake. The Rhone River and its tributary the Arve River cross it. Located 4 hours away from the Riviera and 1 hour away from Chamonix, Geneva is located in a unique geographical situation.

The construction of a High Speed Regional Subway System (RER) serving the area, including France, is under way.







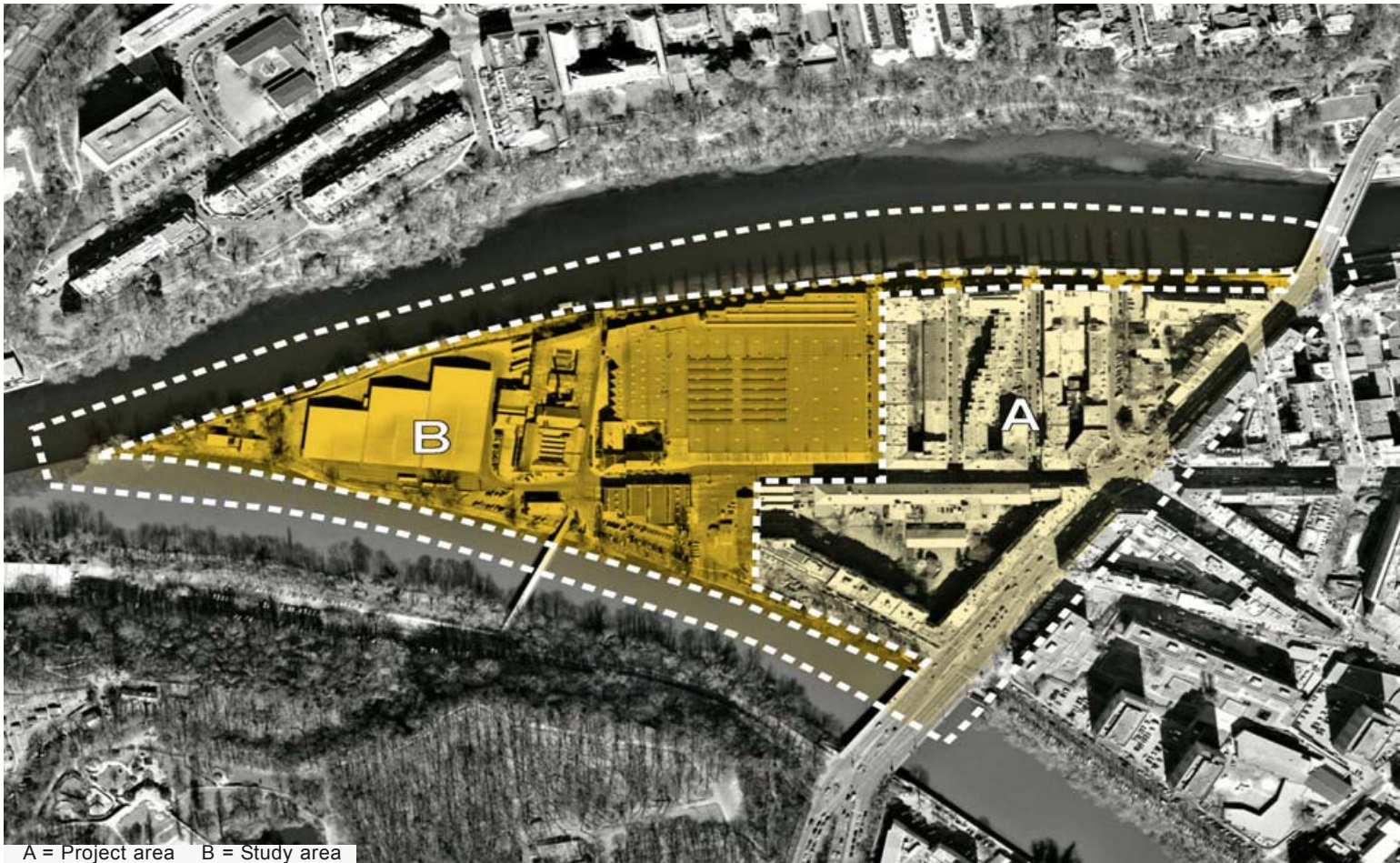
**URBAN SCALE : STUDY SITE**

The project site (A) is called " Pointe de la Jonction ". It is a peninsula located at the confluence of the two rivers crossing Geneva. It is bordered to the north by the Rhone river, to the south by the Arve river, and to the east by one of the main thoroughfares of the city that carries public transport; in the near future a new tram line connecting the station of Cornavin (centre of Geneva) to the commune of Bernex to the west will use it too.

The extreme point is a quiet, magic spot, where the clear waters of the Rhone River mix with the muddy waters of the Arve.

**Programmatic intentions:**

The study will focus on a redevelopment strategy for the site that will take into account the financial burden of moving existing structures, built in a recent past, that are not fully amortized yet.



**PROXIMITY SCALE : SITE OF PROJECT**

The land within the scope of the project (B) is comprised of:

- plots of land located at the extreme western point of the study area.
- public domain land bordering the 2 rivers - riverbanks included.

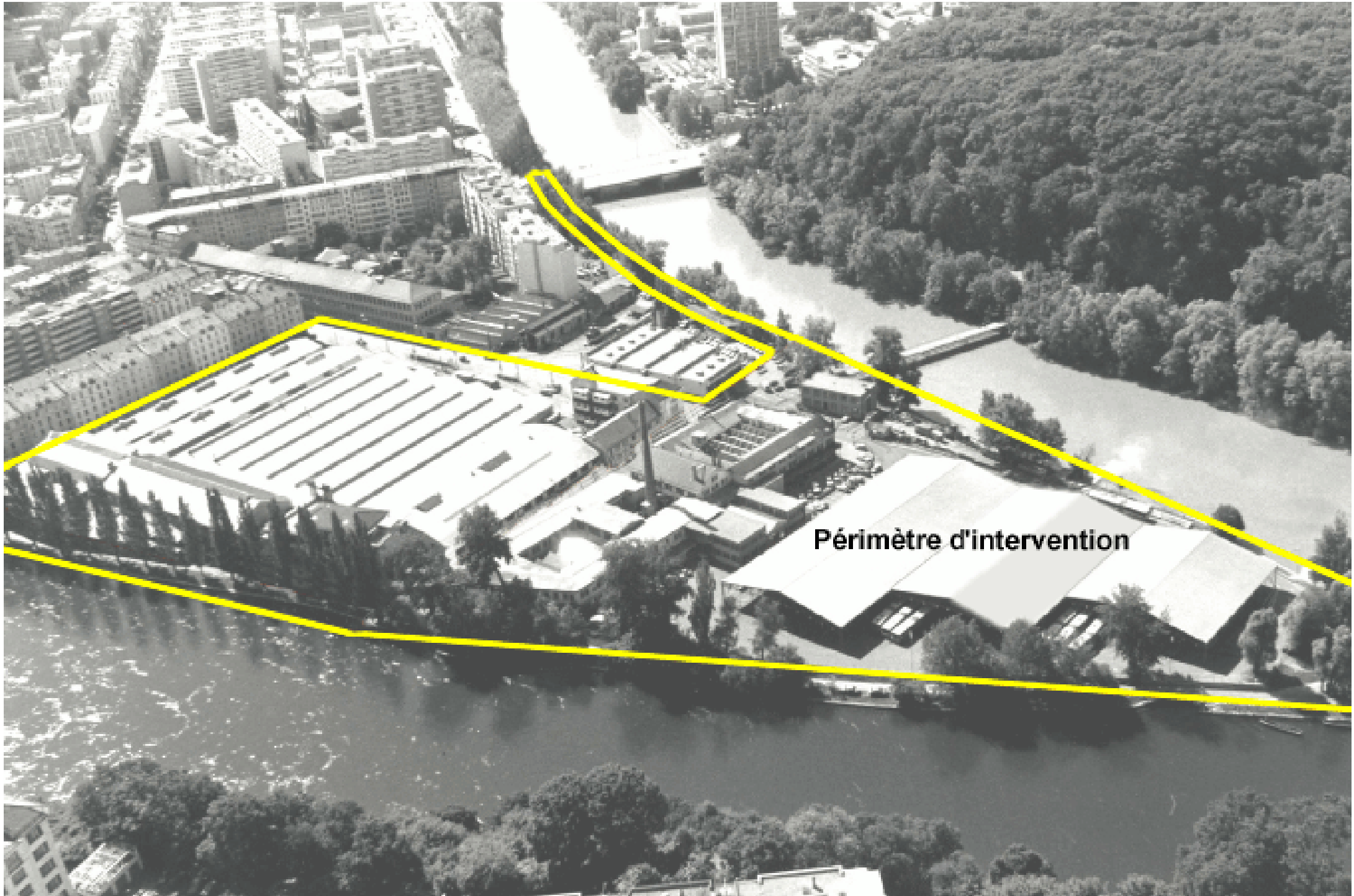
Buildings that can be demolished or converted currently occupy the grounds.

The site redevelopment plan from the local authorities calls for pedestrian walks on the riverbanks, a green area, and mixed housing.

**Programmatic intentions:**

- Pedestrian walks, parks, swimming, etc...
- Housing units for families and young people.
- Artist studios, cultural centres, space for NGOs for example, with housing units and a green area.





**Périmètre d'intervention**

