



City	Sion
Location	Place de la Gare
Population	27'000 inhabitants
Study site	23.5 ha
Site of project	6 ha

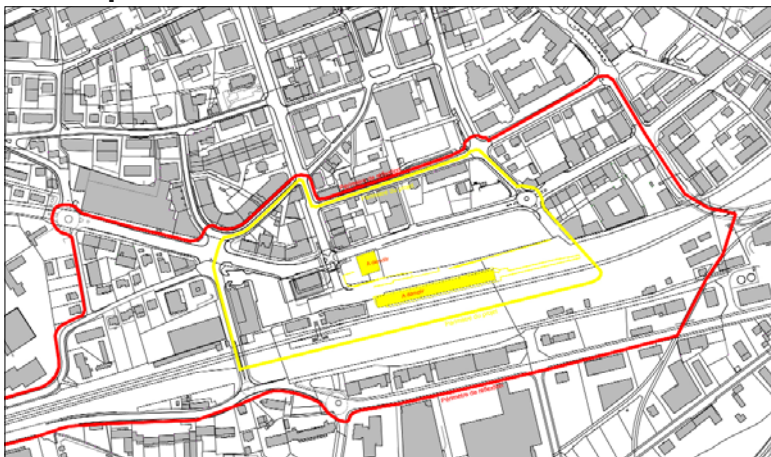
TOPIC

The Rhone River runs through the Canton of Valais located at the heart of the Swiss Alps. It is a well-known tourist region and provides a high-quality and diverse environment for its inhabitants (various leisure activities in the mountains). However job opportunities are limited. This is why more and more of people have to commute to take advantage of this exceptional living environment while working in a job that meets their aspirations or skills. With the recent development of major thoroughfares this new form of nomadic lifestyle has become possible. The City of Sion is part of this phenomenon and 2-way commuting with other cities (Lausanne, Geneva) and the valleys nearby is a fact of life. Thus, Sion, capital of the Canton of Valais, has a population that doubles during office hours, to reach some 55'000 people.

TERRITORIAL SCALE : CONURBATION

The touristy city of Sion is located at the gateway to well known ski resorts like Crans-Montana or Zermatt. This medieval city attracts a large number of tourists. It also enjoys a bustling cultural life (classical music festivals, museums, exhibition, etc). Consequently, it is easy to understand that transport is a major challenge to the city.





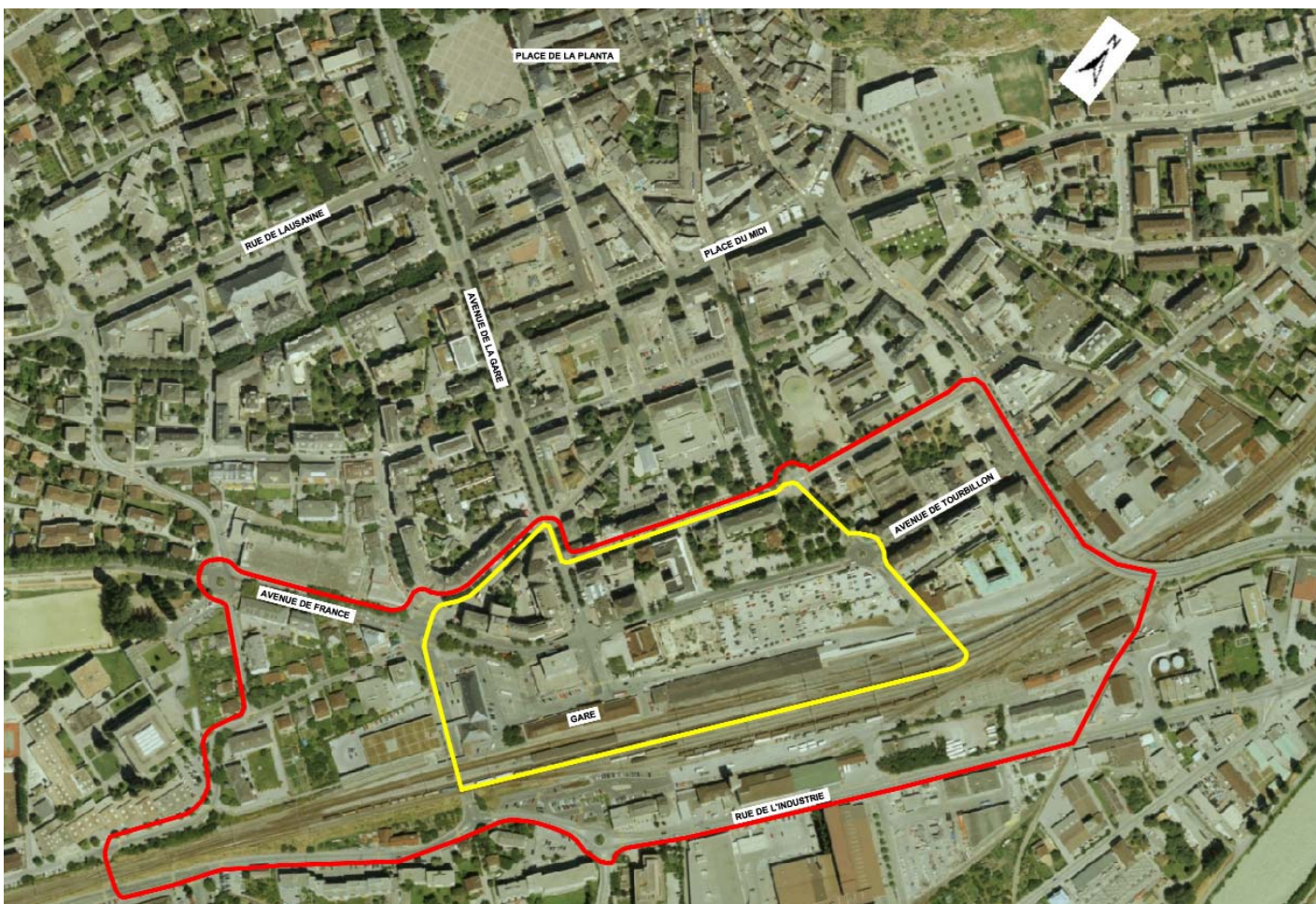
URBAN SCALE : STUDY SITE

The study area includes the railway station district located in a strategic position for future City developments and the plays an important role in local business activity. This area is not only a large intermodal node (Swiss Railways station - CFF and the largest bus terminal in Switzerland), but contains also large areas of undeveloped land available for construction in the city centre.

Programmatic intentions:

The study will focus on the major development axis of the district in relation with the city's overall development, enabling local authorities to plan the future development of the area.

The railway and bus station are major preoccupations in the global reflexion about the site and it's connections.



PROXIMITY SCALE : SITE OF PROJECT

Land within the scope of the project area belongs to several owners, amongst which the CFF (Swiss Railways). Access to the site is excellent. However, various traffic flows intermingle throughout whole area and the railway station currently does not even have a public square worthy of that name.

Thousands of people commute everyday through the site, either via the CFF station (Swiss Federal Railroads) or via the bus terminal that serves passengers from neighbouring valleys.

Programmatic intentions:

The development program will focus on residential development to meet the housing demand linked to the rise in employment. Therefore this land will play a major role in Sion's future urban development.

