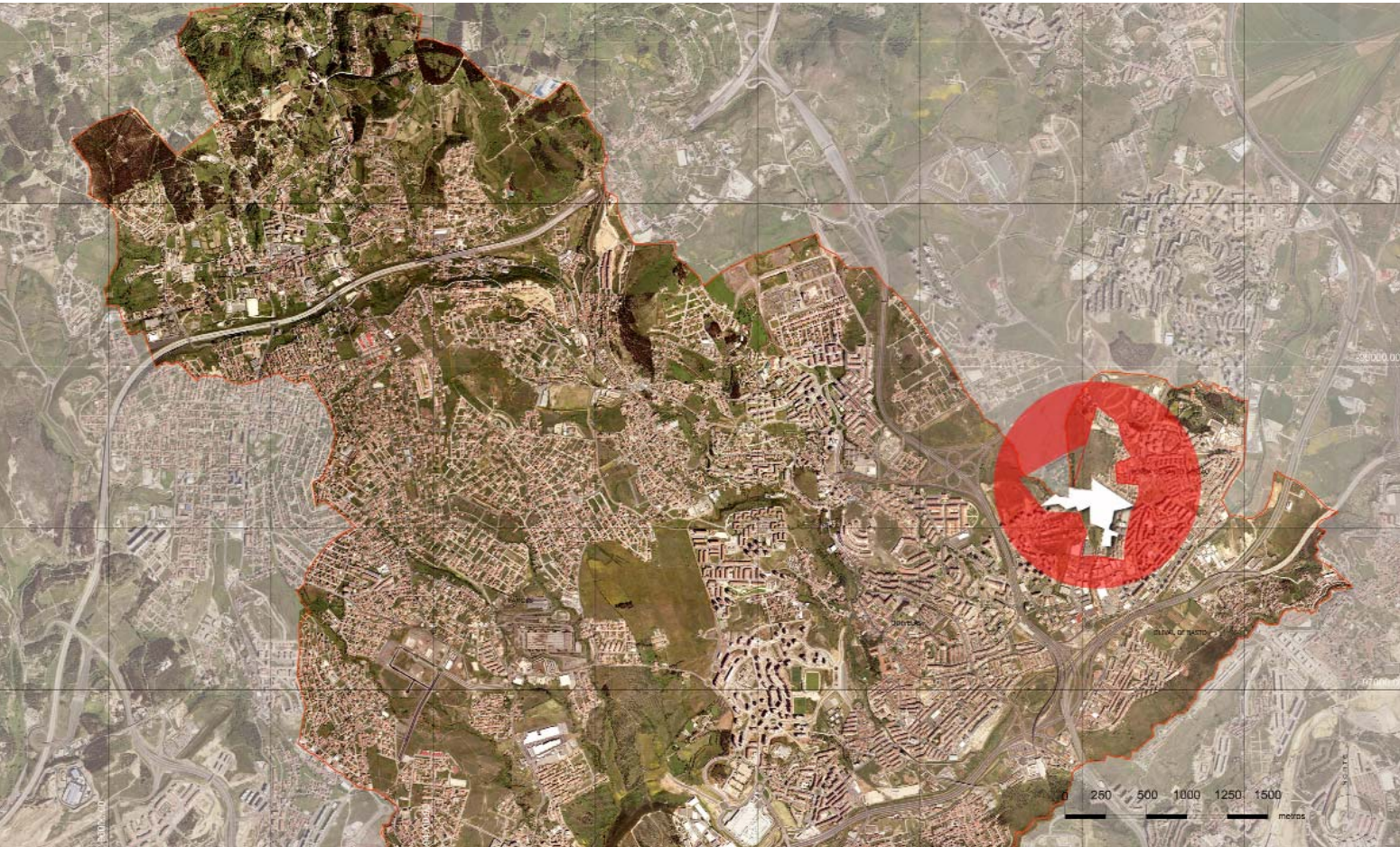


City	Odivelas
Location	Sítio do Barruncho
Population	540 inhabitants (Sítio do Barruncho); 14,704 inhab.(Parish of Póvoa de Santo Adrião); 133,847 inhab.(Municipality)
Study site	33.03 ha
Site of project	7 ha

**TOPIC**  
A critical urban area's renewal, with social, economic and environmental components. Sítio do Barruncho area has inherited an inadequate urban process (resulting in poor living conditions, social exclusion, crime, ineffective communal services such as mobility and social facilities). Fundamental action, namely at a sustainable social development level, must be undertaken to stimulate a qualified territory development model in a context of greater equilibrium, urban permeability, solidarity and sustainability. Therefore, this site is a strategic option both at social and urban habitat models, and it is also an exercise of new territorial management practices. It is for sure a creativity challenge for young professionals and an opportunity for innovation in what urban projects refers to.

**TERRITORIAL SCALE : CONURBATION**  
The city of Odivelas is integrated in Lisbon's Metropolitan Area (AML) which, although considered a developed region, still holds a few degraded poles for which there's a regional requalification urban policy, and a commitment of the Municipality's policy. The cooperation between central government and local government, as well as specialized promoters agents is in order to assure investment convergence at AML's level.







#### URBAN SCALE : STUDY SITE

Urban structuring, safeguarding the ecological structure and valuing the urban landscape; Promoting people's housing in socially integrated conditions; To diminish the contrasts between consolidated and undeveloped areas/spaces and encourage the mixing of urban uses, in a compatible way; To promote accessibility and spatial permeability as well as developing an integrated facilities net, related to education and socializing spaces.

#### Programmatic intentions

To structure the urban space and safeguard the ecological structure; to design public space as urban and social interlinks; to associate new activities and facilities; to foresee structuring car and pedestrian connections.

#### PROXIMITY SCALE : SITE OF PROJECT

Development of a controlled costs housing project for the re-lodging of families currently living in precarious houses, as well as for other groups of lower economic power, mostly young people. To preserve the social, economic and ecologic existing components, with priority to the permeability of spaces for social relations, in a transversal and sustainable way. For the construction development, housing cooperatives' partnership with the city and the financial support of the National Housing Institute (INH) are engaged.

#### Programmatic intentions

Multifunctional facilities (family support, solidarity, etc.); neighbourhood shops and services; pedestrian public spaces to stay-at and for leisure; housing - 198 apartments (special re-lodging programme: 98 + economic housing: 100).







