

TOPIC 3

CULTURAL INTERFERENCES

SCENARIO 1

HEREDITY

EUROPAN EUROPE + EUROPAN AUSTRIA + CITY OF VIENNA
+ WINNING TEAMS EUROPAN 11

TOPIC 3 – CULTURAL INTERFERENCES

OBERLAA

Cultural references are a generator to import elements in the projects able to define strategies of reconnections to the context. Sometimes they are based on physical characteristics of the site or its surroundings, sometimes derived from more spiritual elements as abstract figures or mental images. They can be also stories in terms of social practices and local specificities.

The site in Vienna on this topic is OBERLAA AREA. Designing an urban coherency for the new development in reference to the existing culture of the place: leisure and spa

With Winners of

Capelle aan den IJssel (NL), Leeuwarden (NL), Oslo (NO), San Bartolomé (ES),
Simrishamn (SE), Turku (FI)

And Runners-up of

Aigle (CH), Deventer (NL), Pejë/Pec (KO), Sestao (ES), Warsaw (PL), Würzburg (DE)

Coach: Jens METZ, architect, Berlin (DE)

TOPIC 3 – CULTURAL INTERFERENCES

INTRODUCTION

The workshop tries to explore solutions that overcome the traditional sense of cultural references, by integrating different interpretations, turning it into “Cultural Interferences”. These interferences can be seen as a remix of different cultural contexts, reconstructing a fragmented but recognisable identity based on more than one culture. The Oberlaa site raises a number of questions in this sense, as the arrival of the metro will transform the site conditions and provoke a considerable rise of density

The three scenarios propose approach the site from different perspectives, focussing on individual aspects to generate their project strategies, leading to three distinct urban figures:

Scenario #01, HEREDITY, proposes a model for the future development based on an analysis of the historical process of growth and the existing rural fabric. An inhabited “thick ground” juxtaposes habitat and landscape, blurring the borders between the existing and the new, the built areas and the landscape. A catalogue of possible urban figures provides a matrix for the conceptual densification of the site, each of them based on a careful reading of the local qualities and characteristics.

Scenario #02, TWO WORLDS, states that the two different identities on both sides of the rail tracks should be reinforced, each “world” developing its own specific character and a very different urban figure. The existing patterns are taken as a model for densification, proposing a larger scale of development on the north and a smaller scale to the south. A linear green belt links the connections across the tracks and irrigates the new fabric by means of public spaces.

Scenario #03, LINES, takes a very different position in focussing on the cultural and spatial value of the agricultural open fields, underlining the need for preservation of the rural traces. The project proposes a promenade around the fields, punctuated by local interventions connecting the public space to the surrounding fabrics. As a case study, this ring is extended into the site, thus linking the more territorial approach to the local scale. The proposed urban structure is a reinterpretation of the existing, integrating various programs along the loop.

Jens Metz

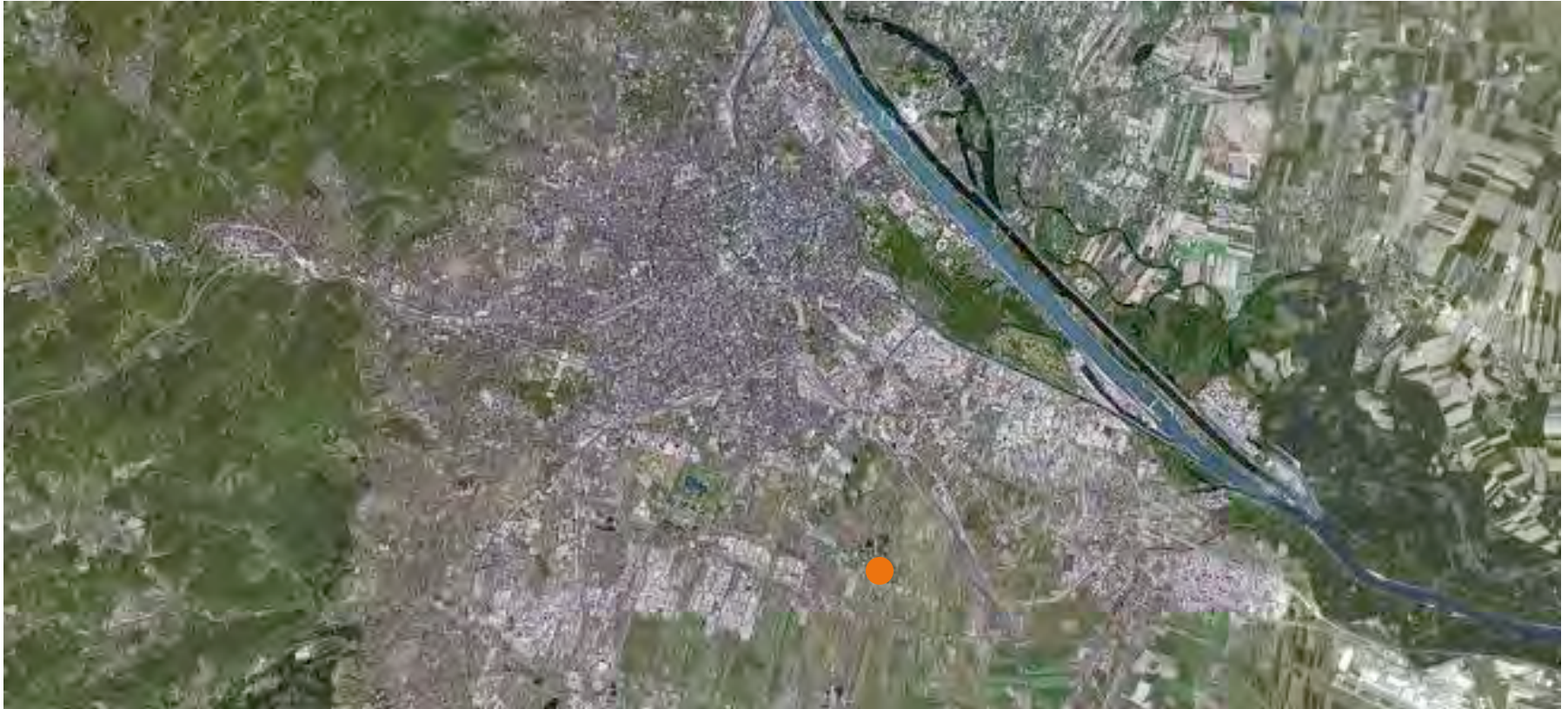


Cultural Interferences

The Workshop

Cultural Interferences

The Workshop



Oberlaa Vienna (AT)

Cultural Interferences

The Workshop



Oberlaa Vienna (AT)

Cultural Interferences

The Workshop



Oberlaa Vienna (AT)

Cultural Interferences

The Workshop



Oberlaa Vienna (AT)

TOPIC 3 – CULTURAL INTERFERENCES

SCENARIO 1:

HEREDITY

Francisco Javier CASTELLANO PULIDO, Tomas GARCIA PIRIZ,
Hans LEFEVRE, Paul ROLLAND, Sara ZUGASTI

Vogelschau der Stadt Wien und Umgebung um 1683 (1686) von Folbert van Alten-Allen



HEREDITY

A contemporary development for Oberlaa descended from human activity basics



BORDERS

illustrations of site borders / relation between site and surroundings.



LIMITS

illustrations of inner limits of the site.



GRIDS

typical extracts of different urban matter skeletons.



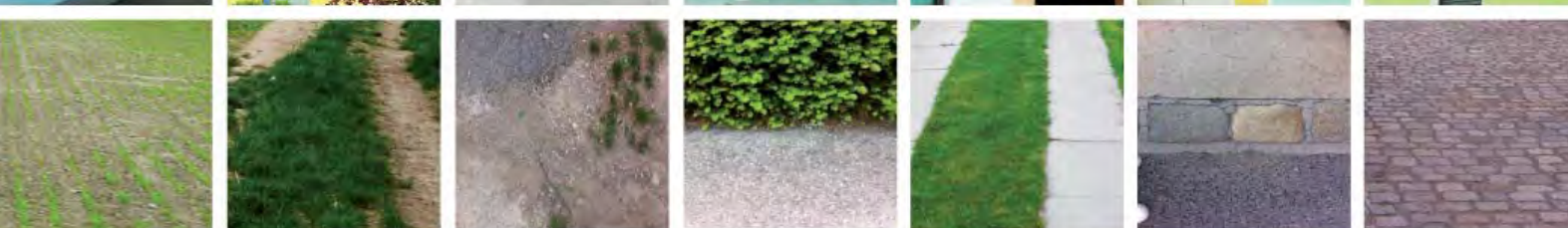
TYPLOGIES

collection of different typologies within the Oberlaa site.



PANTONES

collection of colour shades: a visual souvenir for Oberlaa inhabitants.



MATERIALS

non exhaustive list of materials & textures .

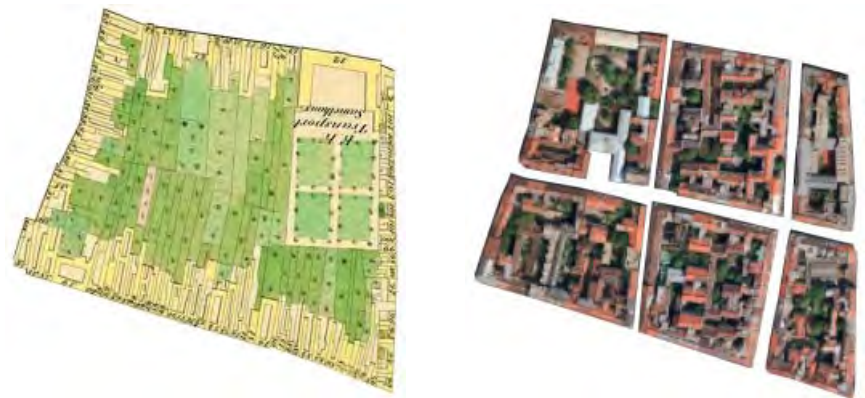




_AERIAL VIEW OF WIEN EVOLUTION BETWEEN 1773 and 2011

_AERIAL VIEW OF LANDSTRASSE EVOLUTION BETWEEN 1830 and 2011

_AERIAL VIEW OF JOSEPHSTADT EVOLUTION BETWEEN 1830 and 2011





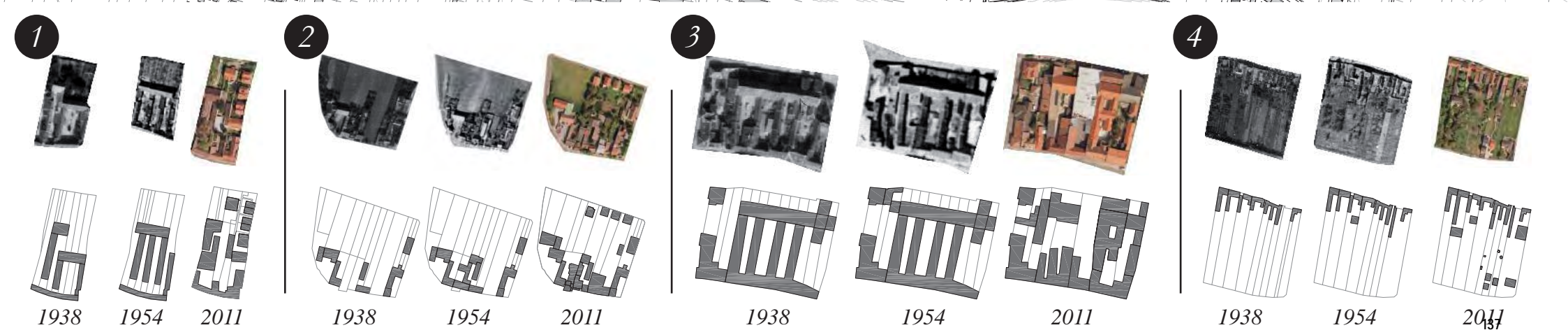
_Oberlaa 1938



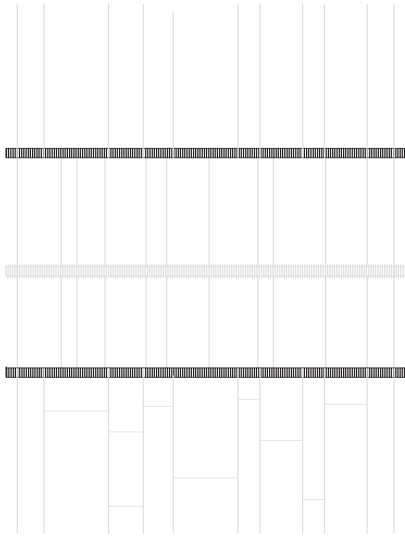
_Oberlaa 1956

_AERIAL VIEW OF OBERLAA EVOLUTION BETWEEN 1938 and 1956

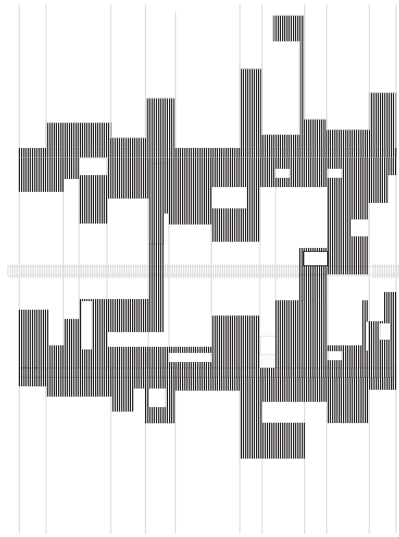
_EXEMPLE OF LAND PARCELS EVOLUTION IN OBERLAA



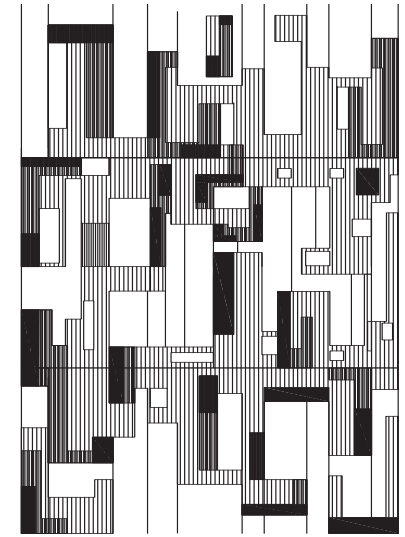
DENSIFICATION ATTITUDE FOR A CONTEMPORARY CITY



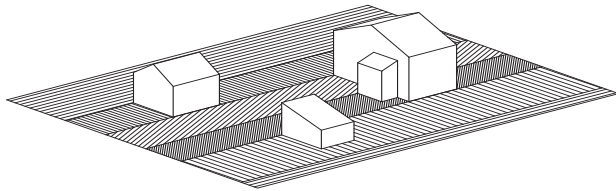
A site forced by physical limits.



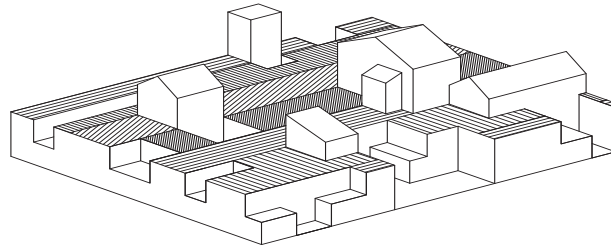
To thick and inhabit limits to cross it.



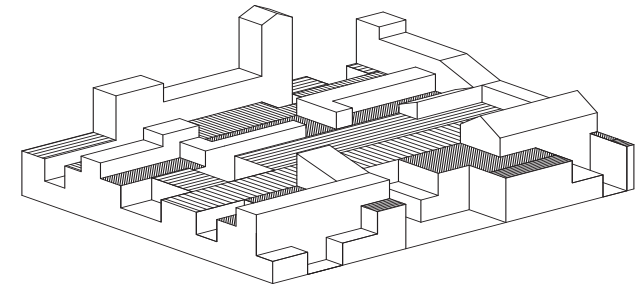
Architectural colonisation of a thickened ground.



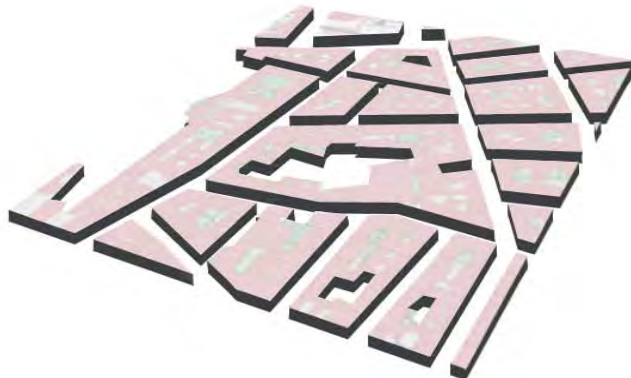
Typical countryside typologies with searched qualities.



Thickened ground / densification from botom.



Architectural colonisation / densification from top.



2011-based tissue (density & organic pattern)

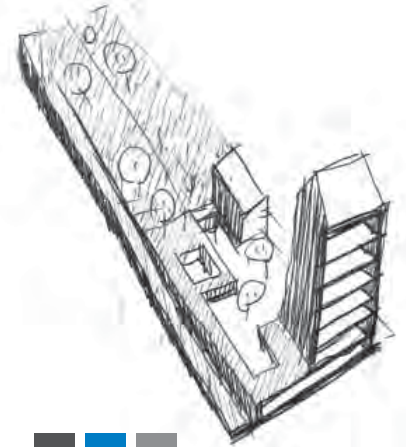
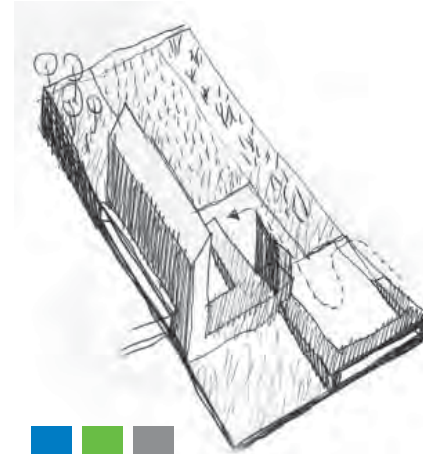
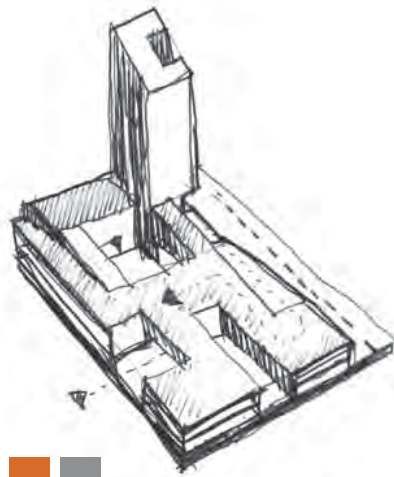
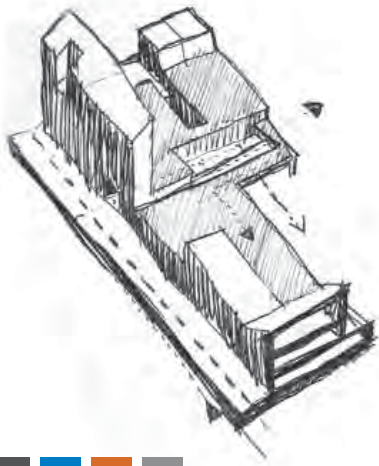


Re-interpretation of 1830-tissue qualities

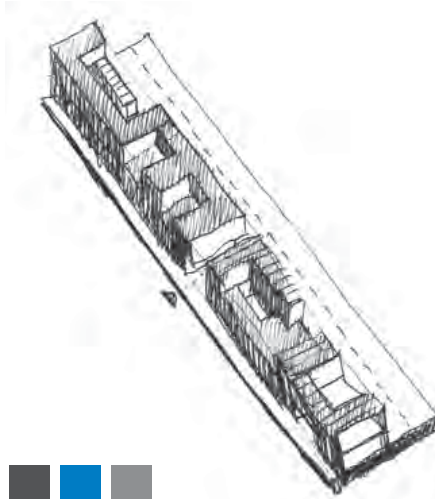
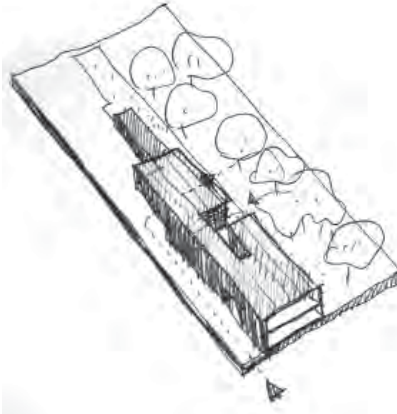


A contemporary city born on its oringins

HIGH DENSITY



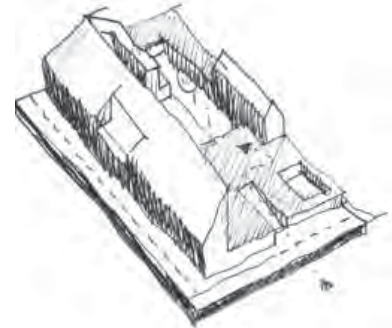
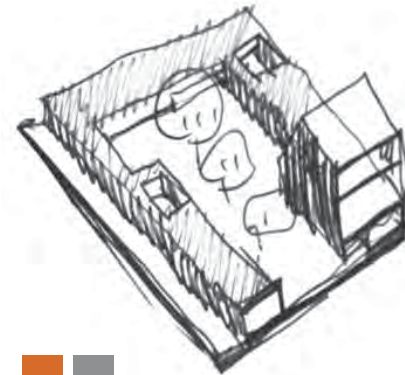
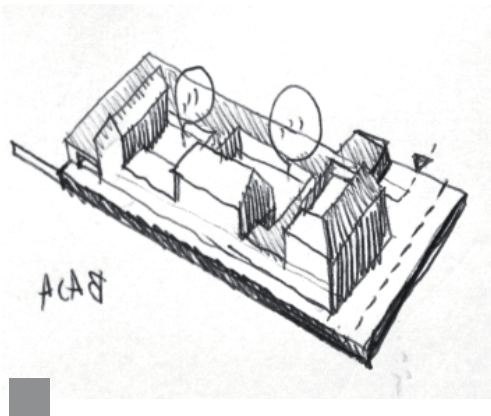
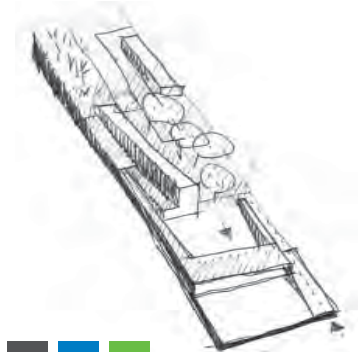
MEDIUM DENSITY



PARKING
FACILITIES
LEISURE
BUSINESS
HOUSING



LOW DENSITY



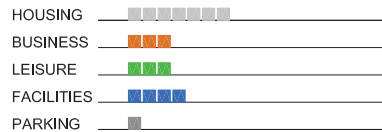
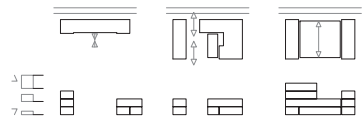
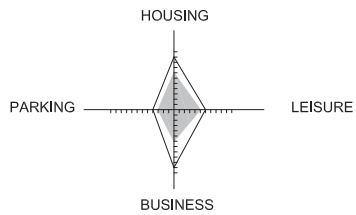
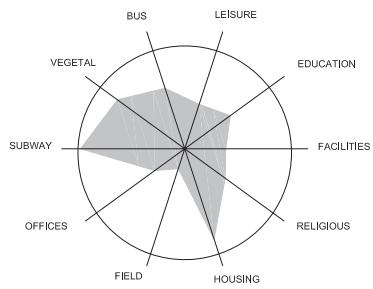




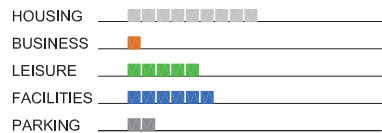


- BIKE LINE
- PUBLIC TRANSPORT
- METRO STATION
- HOUSING
- BUSINESS
- LEISURE
- FACILITIES
- PARKING

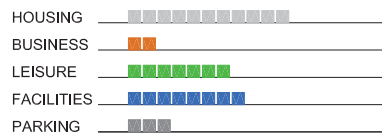
Programmatic study.



YEAR | 0 + 10 YEARS

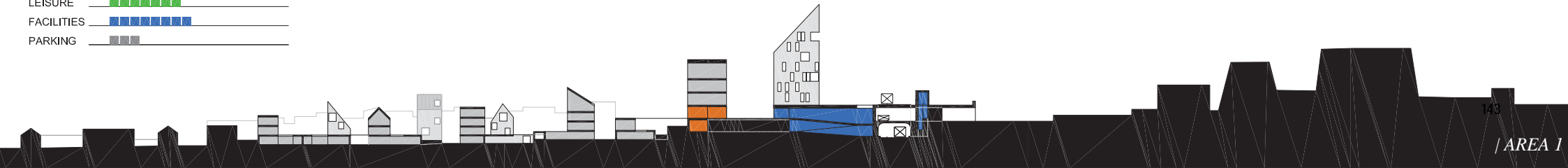


YEAR | 0 + 20 YEARS

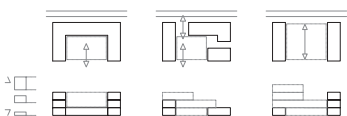
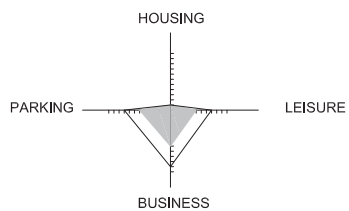
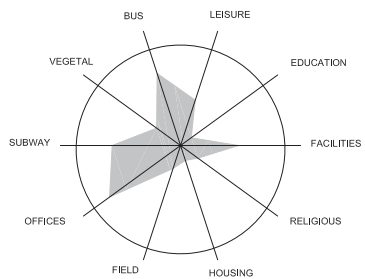


Atmosphere illustration.

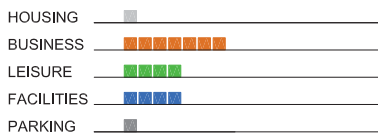
Diagrammatic section.



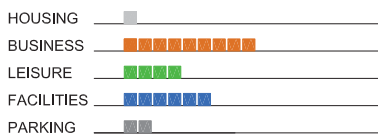
Programmatic study.



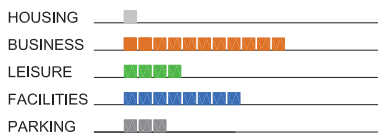
YEAR | 0



YEAR | 0 + 10 YEARS

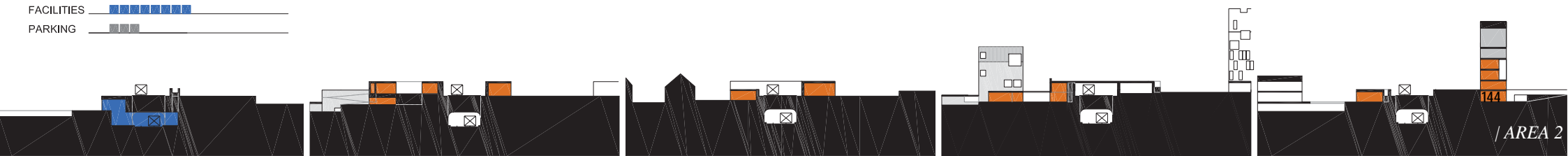


YEAR | 0 + 20 YEARS



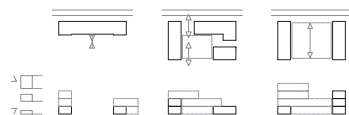
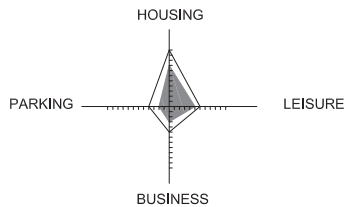
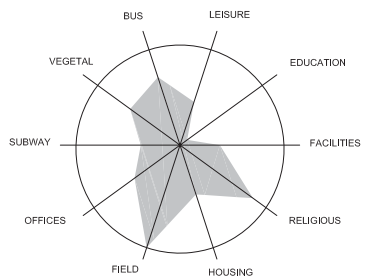
Atmosphere illustration.

Diagrammatic section.

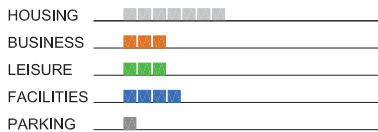


/ AREA 2

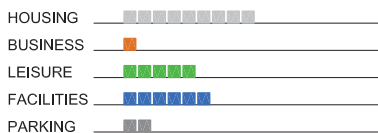
Programmatic study.



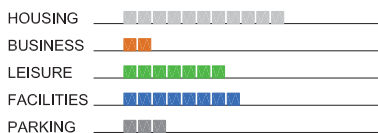
YEAR | 0



YEAR | 0 + 10 YEARS

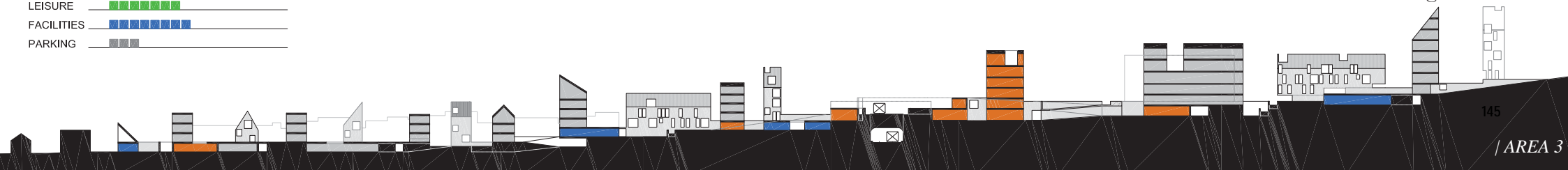


YEAR | 0 + 20 YEARS



Atmosphere illustration.

Diagrammatic section.



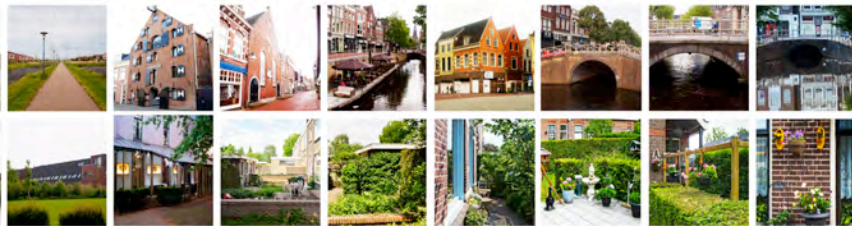


TOPIC 3 – CULTURAL INTERFERENCES

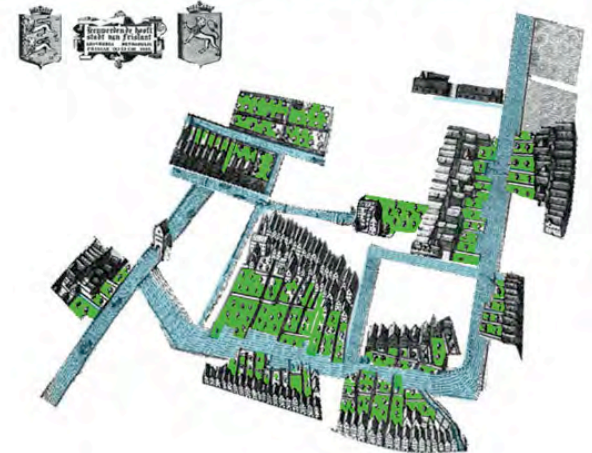
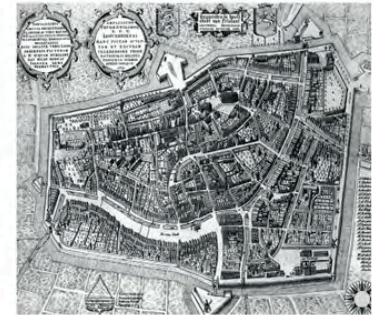
WINNING PROJECTS EUROPEAN 11 ON THE TOPIC LINKING WITH USES

Cultural Interferences

Revisiting an archetypal figure



A new city emerging from the old one

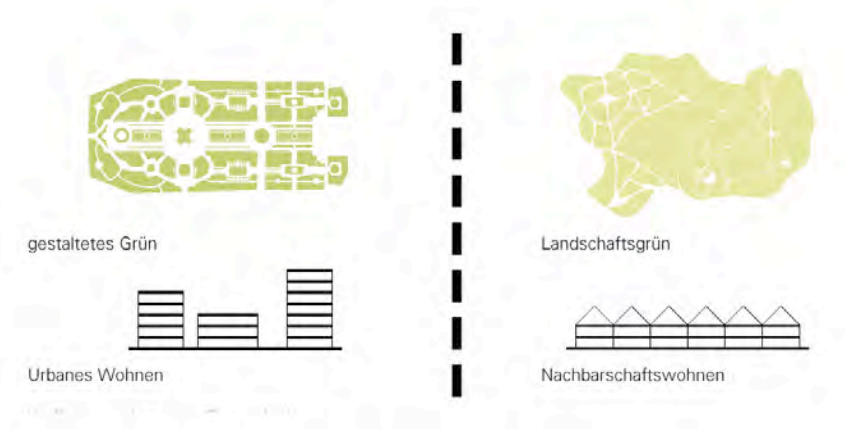
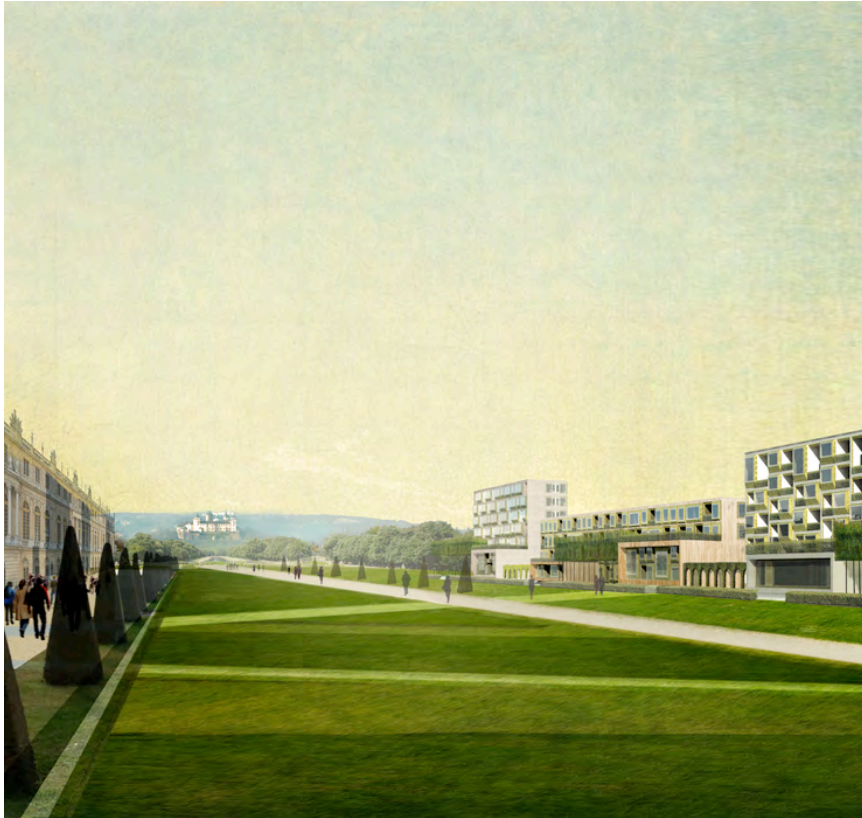


NieuwWaterGarden Leeuwarden (NL)

Francisco Javier Castellano Pulido, Tomas Garcia Piriz ES)

Cultural Interferences

Revisiting an archetypical figure

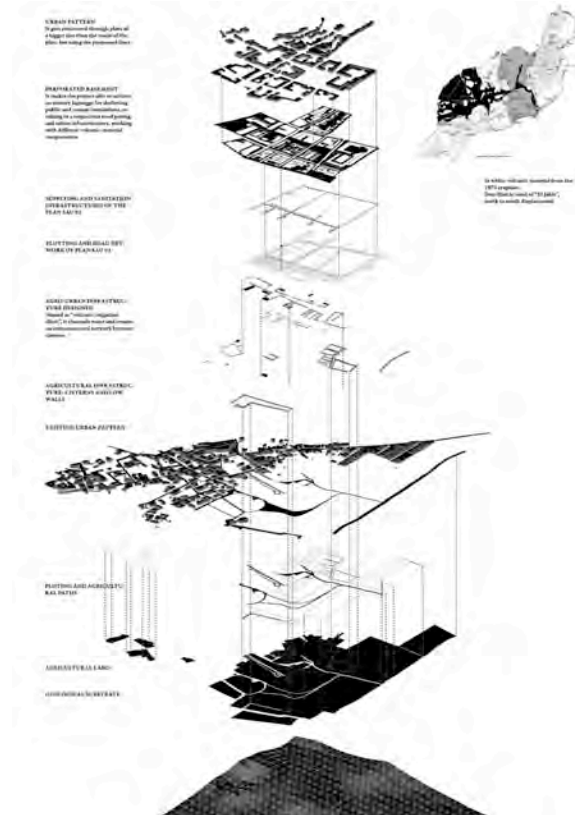
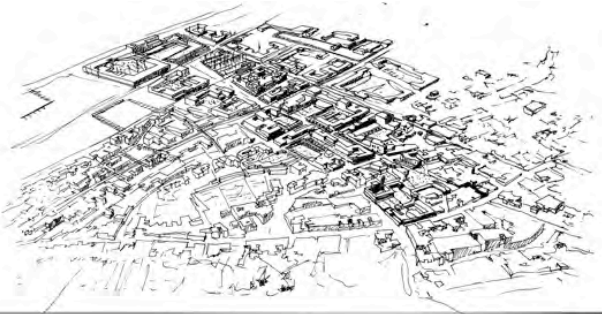


Le Nouveau Trianon Würzburg (DE)

Philipp Reichelt, Christian Zöhrer (DE)

Cultural Interferences

Reactualising vernacular traces



Rurban Geology San Bartolomé (ES)

Francisco Javier Castellano Pulido, Tomas Garcia Piriz ES)

Cultural Interferences

Reactualising vernacular traces

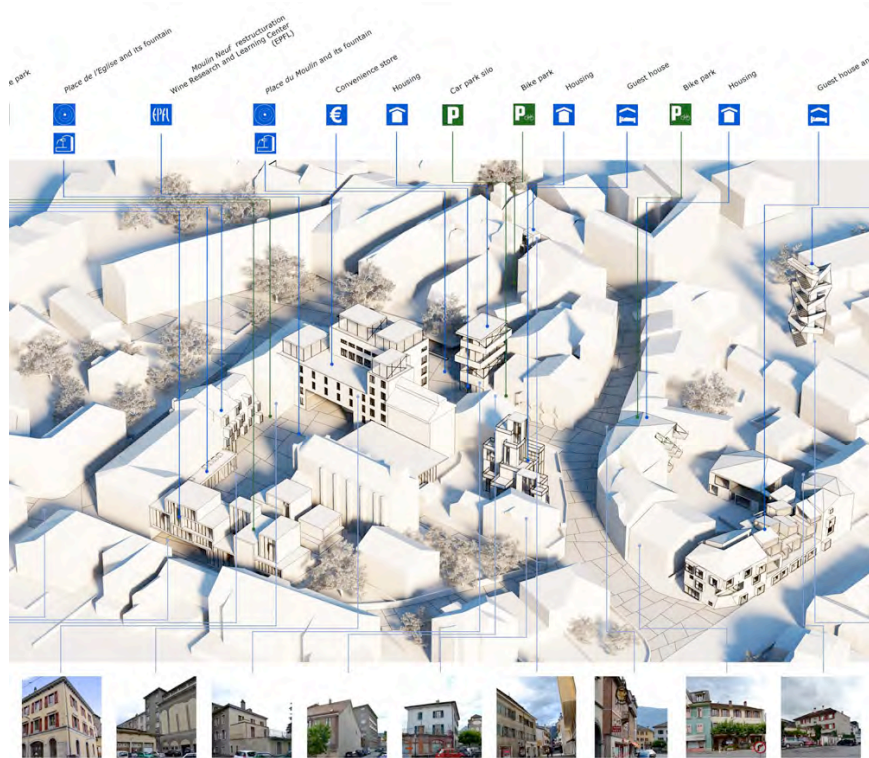


Polder Salad Capelle an de IJssel (NL)

Ken Thompson (UK)

Cultural Interferences

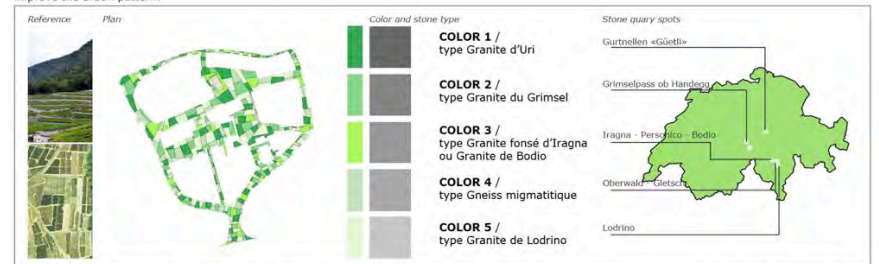
Reactualising vernacular traces



The urban shape is clarified. **A huge ground treatment unifies** the whole center of the city and **two complementary squares**, an open one and a contained one, harmonize the spaces. New spots to discover are offered to strollers and improve the urban pattern.



URBAN SHAPE



The surrounding vineyard parcels landscapes inspire the new ground pattern. It is made with a panel of five different stone types. The groundfloor becomes a **stage of new uses**, a free identity expression space.

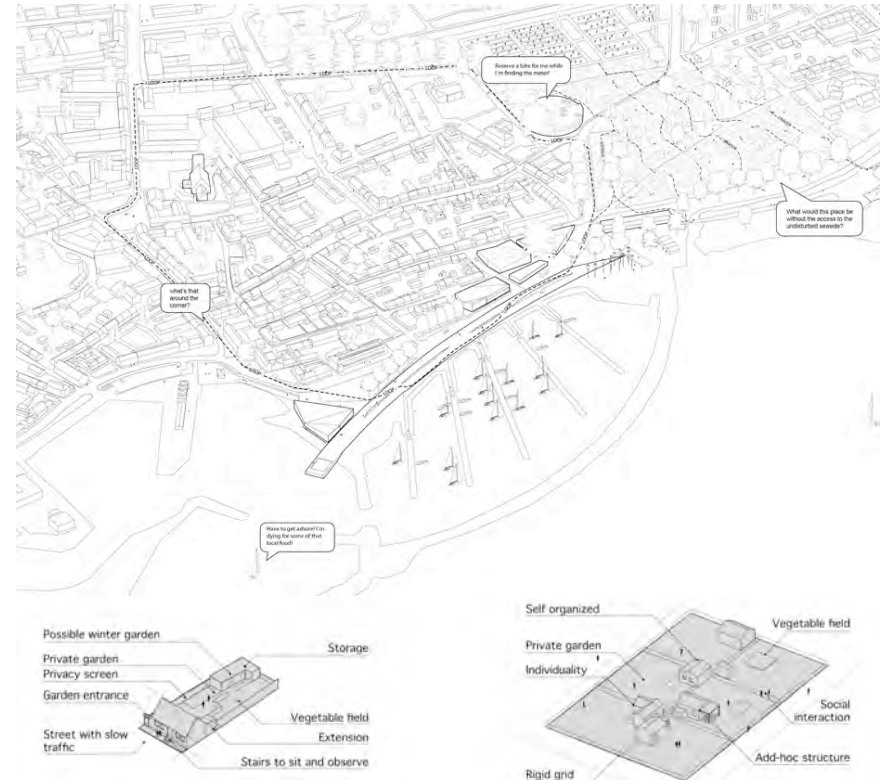
URBAN STAGE

Scene and Places Aigle (CH)

Paul Rolland, Hans Lefevre (FR)

Cultural Interferences

Reinventing an emblematic image ...

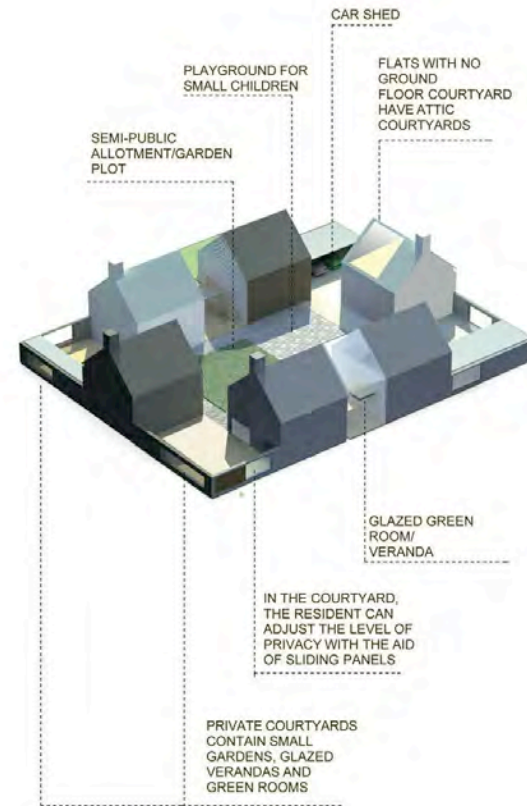


Strädde Simrishamn (SE)

Egil Blom, Hannes Haak, Daniel Lindberg (SE)

Cultural Interferences

Reinventing an emblematic image ...



Garden State Turku (SF)

Sami Vikstrom (SF)

Cultural Interferences

Reinventing an emblematic image ...

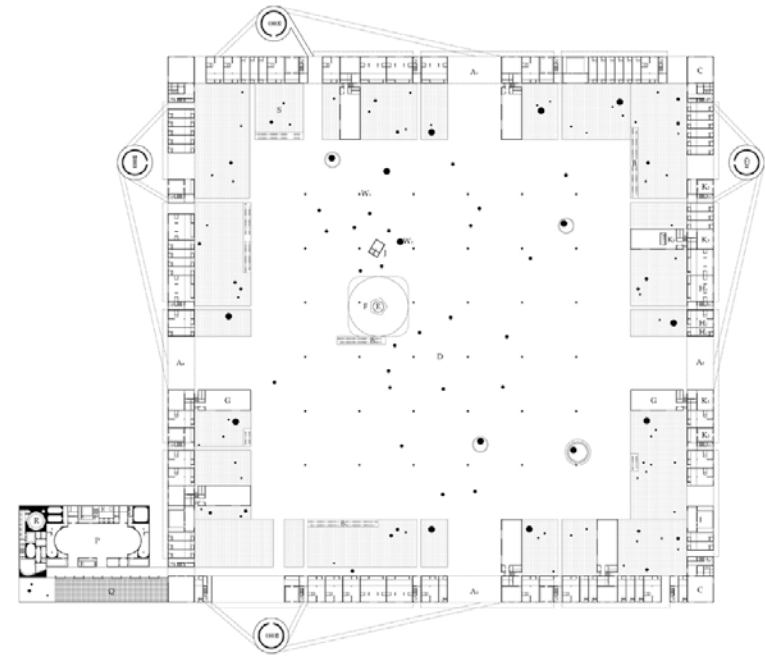
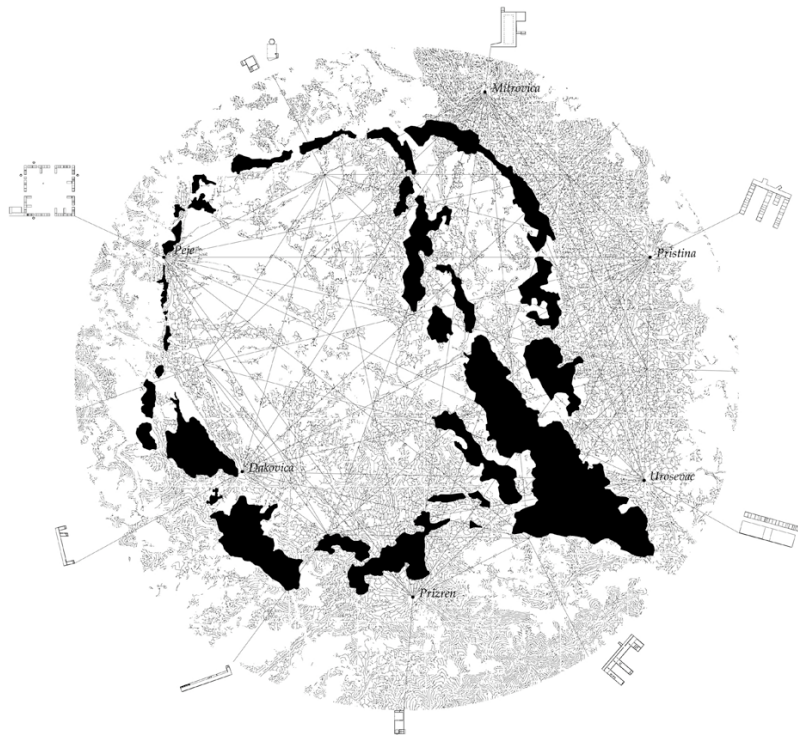


Bricolage Deventer (NL)

Yong Il Kim (NL)

Cultural Interferences

Revealing the collective memory

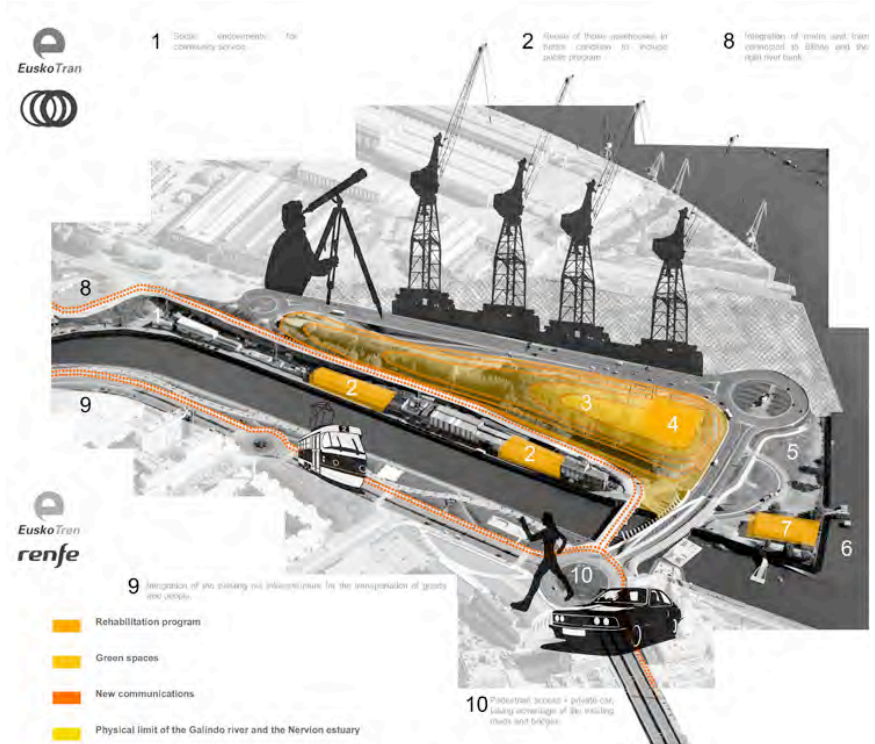


Diana's Ring Peje (KO)

Laura Fabiani, Sante Simone (IT)

Cultural Interferences

Revealing the collective memory

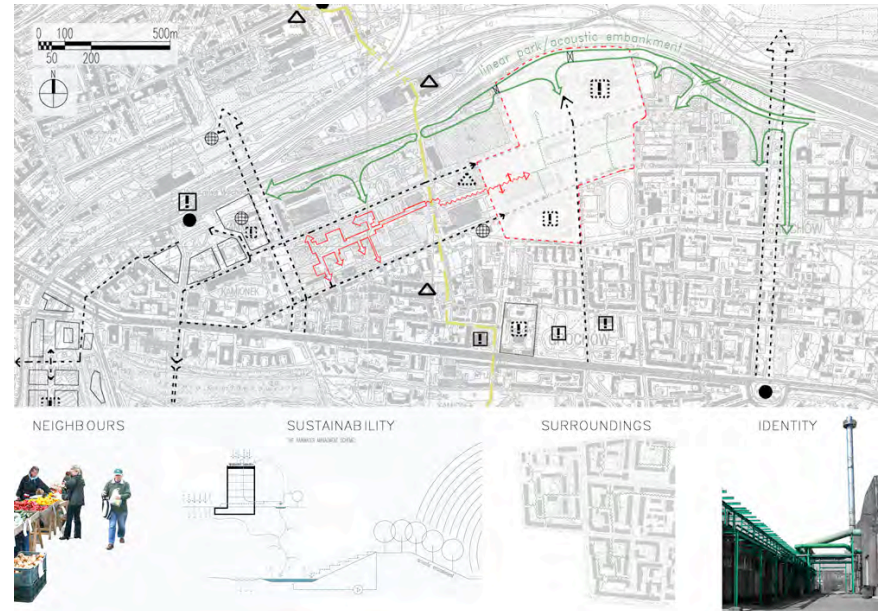
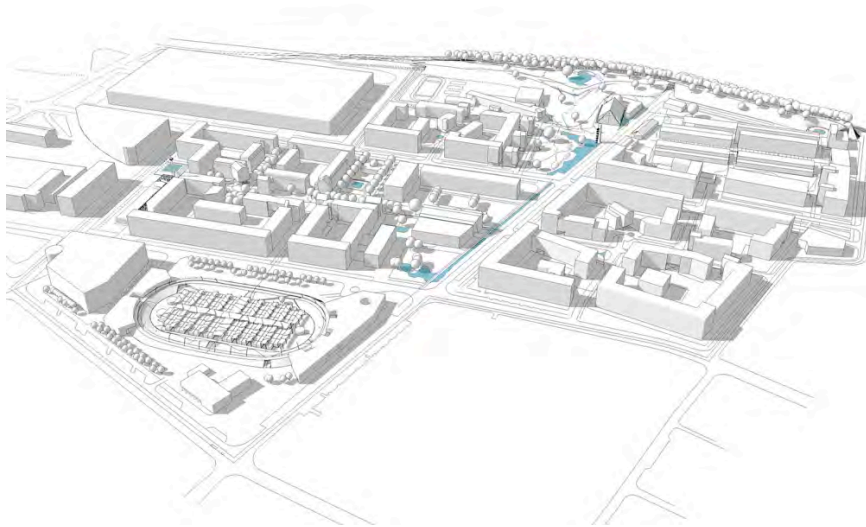


La Punta in transition Sestao (ES)

Sara Zugasti (ES) - Miguel Jiménez (ES)

Cultural Interferences

Recounting social practices



Taking from within Warszawa (PL)

Mateusz Herbst (PL)

Cultural Interferences

Recounting social practices



The Gardens of Gronmo Oslo (NO)

Silke Volkert (DE)