



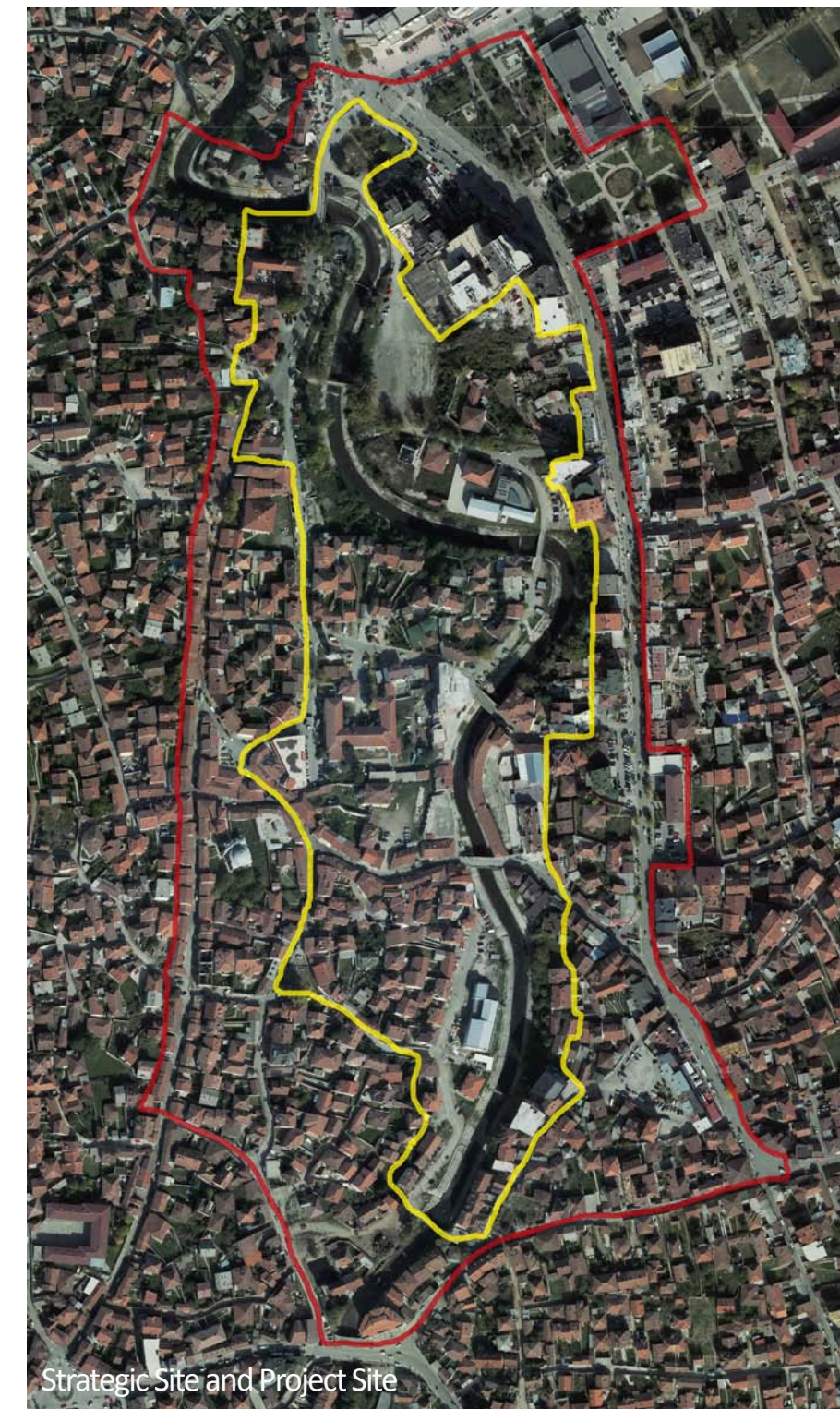
CATEGORY: Urban and architectural
SITE FAMILY: How to transform physical obstacles into new connections?
TEAM REPRESENTATIVE: Professional of urban design or architect
LOCATION Gjakova, Kosovo
POPULATION City 96 000 inhab.
STRATEGIC SITE 40 ha **SITE OF PROJECT** 7 ha
SITE PROPOSED BY Municipality
OWNER OF THE SITE City of Gjakova
COMMISSION AFTER COMPETITION
Urban project management role, design of public and landscape areas. Revitalizing of the riverbank and transformation of central public zone. Reconnecting the area to city center.

HOW THE SITE CAN CONTRIBUTE TO THE ADAPTABLE CITY?
Gjakova is a city with great cultural heritage, historical and natural wealth, the city of rivers, as a center of developed industry and agriculture. Gjakova as free economical zone plays a very important role in economic development. Beside industry the city is a home of the public University which is a great generator for city's diversity. The area of Dukagjin, where Gjakova plays a central role is on the of most visited touristic areas, providing amazing nature, architectural heritage from different time periods and variety of craft production. The site which is located in the central part of the city will revive and connect the existing urban block with the rest of the city by improving space and adding functions to it through adaptation. The river bank should be the added value of the city core.

CITY STRATEGY
City strategy for the future is to develop Industry, trade and food industry in particular. Cultural heritage of the city serves as a great promoter of tourism, and Gjakova is known for its hospitality. The municipality has developed several visions for the city development and each of them involves industry and trade. City's politics is to decentralize the government and to distribute the level of investment and development, for the city not to be over built or concentrated. In terms of internationality, Gjakova plays an important role since it is situated near Albanian border, and connected with main axis with Peja and Prishtina. As a touristic city and heritage promoter the city center which is filled with history needs an improved incorporated space that makes Gjakova as a whole.



Site with existing buildings



Strategic Site and Project Site

SITE DEFINITION

The site has a central role in the city and is located along the river Krena, passing through the historic part of Gjakova. From north where the city park is located and Hotel Pashtrik as a landmark, the site stretches along the river down to south, crossing near old commercial areas, religious buildings, residential areas and newly developed commercial zones. Beside the riverbank which has no activities, on the north of intervention area there is a big public space near hotel, music school, museum, commercial and residential area. Four bridges connect both sides of the riverbank only physically because there is a lack of function and activity that will connect this part to the rest of dynamic city center.

FUTURE OF THE SITE IN RELATION TO ITS FAMILY AND ADAPTABILITY

The city of Gjakova is layered in these categories: Cultural, religious, social and industrial context. As an early developed city the center plays a connecting role to other areas of the city. Diversity is the element that characterizes the Gjakova, especially in the sense of everyday life and tourism, where crafts take an important role of city image and its role in national level, as a factor of culture, economy and heritage. Religious diversity is one of the Gjakova's attributes. Traces of old ottoman bazaars still can be found in the city as well as contemporary architecture that compliments the variety of it.

Low rise buildings still continue the tradition of commercial use and are spread all around the city, usually combined with residential floors above stores and other craftsman shops. The river is the element that gives Gjakova the charm and it should play a main role in connecting the city not separating it by creating gap as it is. The riverbank should be functionalized and generate new improved public space and why not multi-functional space, which is the key attribute of all urban blocks of the city.



North Side - Riverbank along Krena River



South Side - Riverbank along Krena River



Public Space in North Side of intervention site



Green area along riverbank and next to Hotel Pashtrik



Existing structures - Old bazaar - along riverbank



Site elevation along intervention area