

# EUROPAN 14 ITALIA



## Productive Cities



# CUNEO

New City and new productive identities

brief

C1

C2

C3



# ORGANIZATION OF THE COMPETITION

<b>Site representative</b>	City of Cuneo
<b>Actor(s) involved</b>	Public, private or partnership public/private
<b>Team representative</b>	Architect, urban planner, landscape designer
<b>Expected skills with regards to the site's issues and characteristics</b>	Architects, landscape architects, planners with expert knowledge in the environmental sector, designers, social scientists, innovators, artists, economists
<b>Communication</b>	Communication after the results of the competition with an exhibition of all projects, awards ceremony and publication of results (March-April 2018)
<b>Jury – 1<sup>st</sup> evaluation</b>	The representatives of the sites meet the Jury before the installation to clarify any questions about the program.
<b>Jury – prize selection</b>	<p>Depending on the quality of the projects the jury decides how to distribute the prizes.</p> <p>one winner (€ 12,000 gross), one runner-up (€ 6,000 gross) and one or more special mentions (with no prize money).</p> <p>in case there is no winner, ex aequo selection (maximum 3 runner-up) with a prize of EUR 6000 gross each one.</p>
<b>Post-competition intermediate procedure</b>	<p>Workshops locally with the prize-winning teams: winner, reported, special mention, to locate the working group for the stages of implementation</p> <p>the municipal administration reserves the right to finalize the results of the workshop giving to the winner or to a team of award-winning designers, the commission for successive project steps or for an urban study, by negotiated procedure, provided that the professional subject has the technical and economic requirements in relation to the levels of the project to be developed and which will be defined subsequently at the results of the workshop. In case the professional(s) is not satisfy the requirements, he will associate with other parties in accordance with Article 46, paragraph 1 of D.Lgs.50 / 2016, which satisfy the requirements, in the forms of temporary teams and / or using the availment tool art. 89 of Legislative Decree. N. 50/2016</p>
<b>Mission given to the selected team(s) for the implementation</b>	Projects, urban studies, or other to be defined according to the project



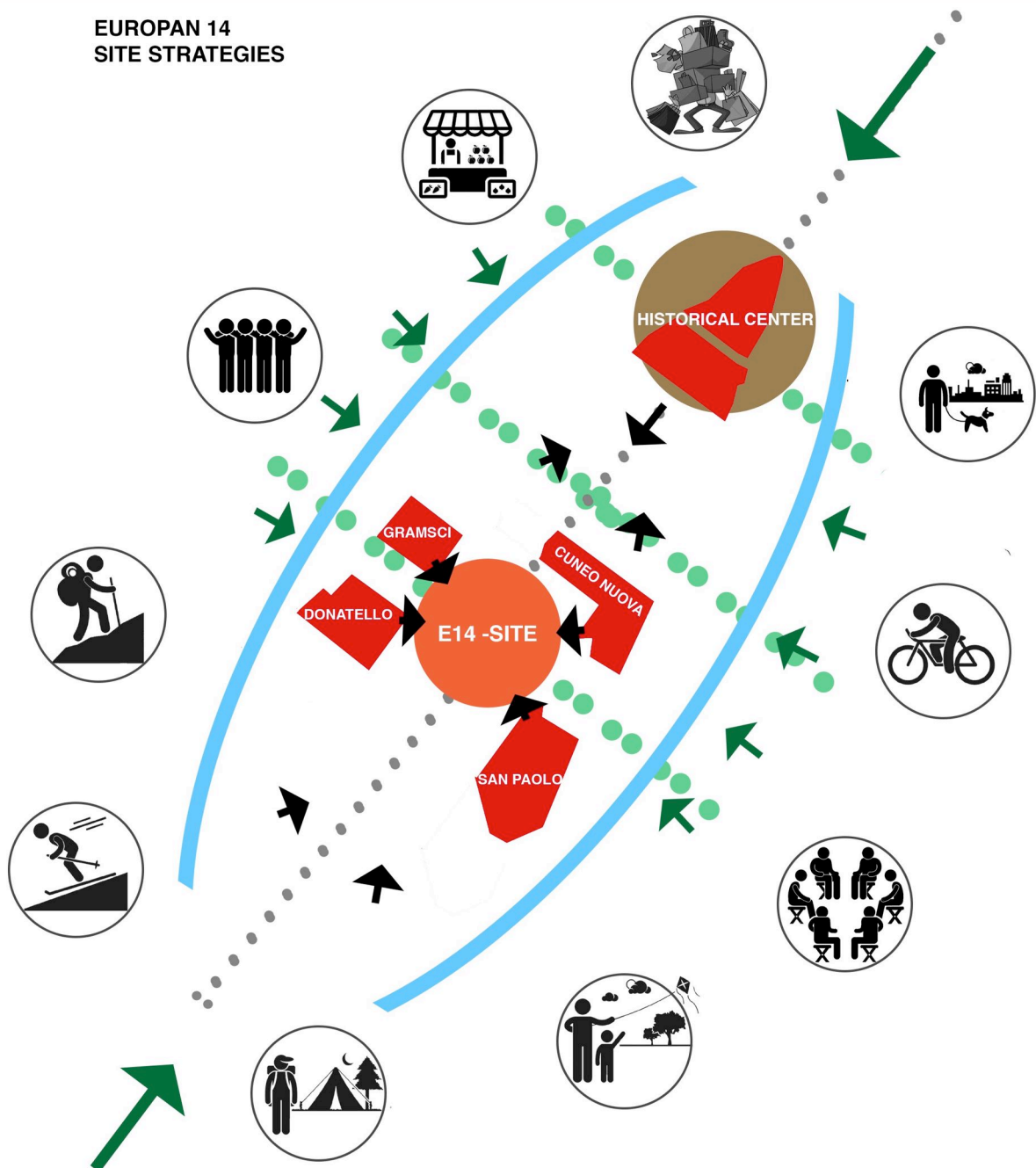
# EUROPAN 14 CUNEO(IT) IN SHORT

Cuneo is a city full of resources, its geographic location had an important role in defending its peculiarities, such as the relationship with nature, sports, culture, wine and food, craftsmanship and open air buying and selling activities.

The city is represented not only by the part located on the plateau but also by the satellite fractions that have themselves an active role like the main city. The urban transformations of the plateau followed the north south axis, from the historical center to the city of XXth century, characterized by a fragmented urban tissue.

Europan project will be central to Cuneo's future development, due to the linear non concentric conformation of the city. A new urban hub as a reference point could be the answer to the necessities of the the new local production activities connected to culture, environment, sports and to the new generation Y's lifestyles, in harmony with the identity that the historical centre represents. Past and future connected along an axis that is both physical and productive.

## EUROPAN 14 SITE STRATEGIES



# INDEX

C1

C2

C3

## TERRITORIAL AND URBAN CONTEXT

The City  
**p.6**

Accessibility  
**p.7**

Socio-cultural context  
**p.8**

Demographics  
**p.9**

The tradition  
**p.10**

Economic context  
**p.11**

Sectors  
**p.12**

The strategic and territorial  
actual programs  
**p.14**

## STRATEGIC SITE

Description  
**p.14**

Programs at strategic site  
scale  
**p.19**

Actions  
**p.20**

## PROJECT SITE

Description  
**p.22**

Project guidelines  
**p.23**

Project/process  
**p.24**

Interaction with the  
Productive Cities topic  
**p.24**

Credits  
**p.25**



# C1 TERRITORIAL URBAN CONTEXT





## The City

Cuneo, a city in the southwest of Piedmont, is situated at the foot of a range of Alpine valleys, overlooking the plain, reference point for a broad geographical area.

The city was established in 1198, and it takes its name from the shape of the plateau on which it stands at the confluence of the Gesso stream and the Stura river, a triangle with a point in the heart of the plain and the other two open to the mountains and the six valleys that lead to France.

The plateau on which Cuneo stands is the latest offshoot of the piedmont plain from the cataclastic era, that was deeply dug and eroded over the millennia by the river Stura and Gesso stream, which, flowing a little further downstream, gave to the "pizzo" its characteristic shape that was source of inspiration for the name of the city. It is the city of the seven sieges, but also a "living room city", characterized by a welcoming and accommodating atmosphere. Many kilometers

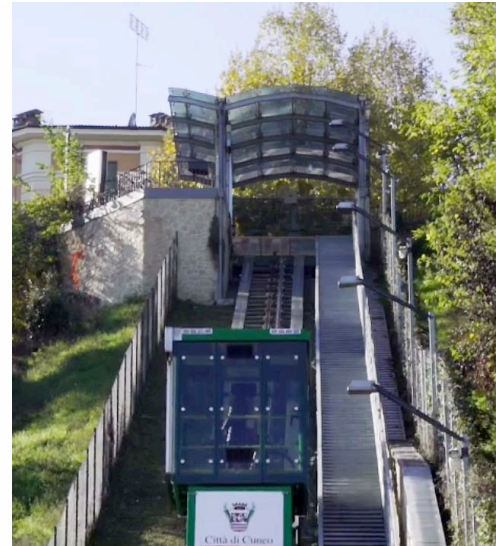
of porches that make the city a large open air mall, start from via Roma, the main street in the old town, to get to the wide and elegant Piazza Galimberti, the heart of the city that keeps alive the memory of the "Resistance" and the Gold Medal, pride of the city, and continue to the modern geometry of the new town along Nizza street. On the main roads face the portals of the oldest churches, the Town Hall and the houses of the old nobility, while narrower streets hide treasures such as the churches of Santa Clara and Santa Croce, city quarter Mondovì with the synagogue of the former Jewish ghetto, the Teatro Toselli and medieval buildings dominated by the former Church of San Francesco. Around the city and the ancient walls parks are located and several avenues and Gardens untie along the tree-lined Viale Angeli, making Cuneo "the green capital of Piedmont".

Cuneo district is the third for dimension in Italy and in Piedmont is called "La Granda".

*Drawing of the city in an old map of 1557 - source [cuneofotografie.blogspot.it](http://cuneofotografie.blogspot.it)*







## Accessibility

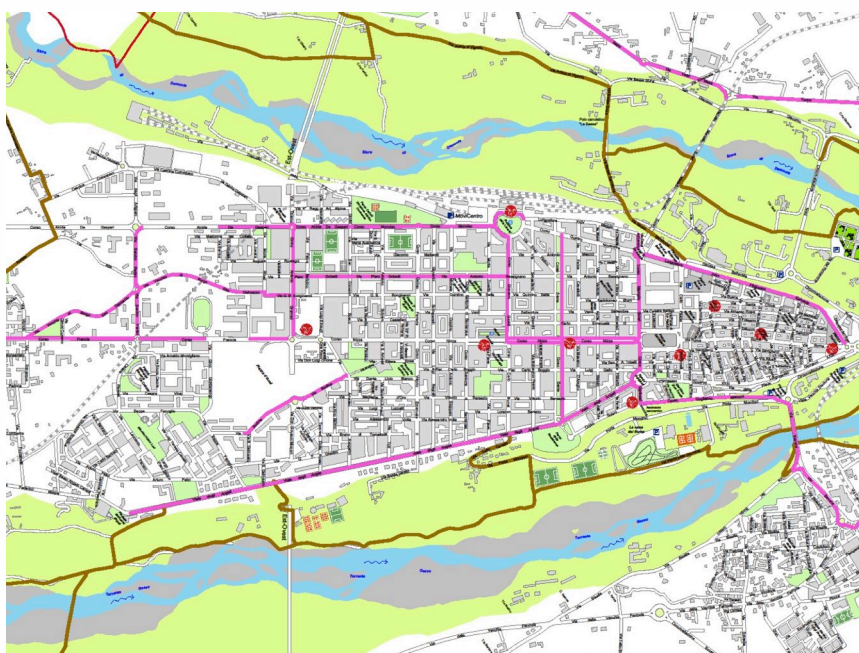
The natural boundaries of the two rivers Stura and Gesso limit urban sprawl, that started from the foundation of the city in the 12th century, with the result that the town always developed along the South axis, in a sequence of phases easily recognizable.

This conformation determines a critical point for accessibility and urban mobility, especially with transportations alternative to cars. The recent traffic ban concerning the central axis of the historical center and the creation of CTZ (controlled traffic zones) helped to develop and strengthen the success of public transportation service and parking lots.

A panoramic elevator connects the sports facilities and allows to easily overcome, even with bicycles the height difference between the river and the plateau.

The city of Cuneo has developed and is almost completing a mixed cycle road for pedestrians and cyclists and has been running for years a bike sharing service. Since 2011, the new regional card BIP (Integrated regional ticket) was introduced, allowing a local bike sharing systems comprehensive of a network of different cities. The city of Cuneo is an attractive pole in the Granda's district, therefore the suburban bus transport are well developed, while the railway connection, with two stations, FS Cuneo and Cuneo Gesso, is guaranteed only by regional trains which can reach Turin in one hour and a half and Savona in two hours and a half. Cuneo represents also a tourist attraction for its architectural features, for its proximity to easy reachable valleys and alpine parks, for its uncontaminated territory that allows and eco friendly human enjoyment.

*Below: Urban bicycle paths. Top-left the cycle-pedestrian bridge "Vassallo". Top-right the panoramic lift*







### Socio-cultural context

The geographical position of Cuneo, eccentric to the development axis of the North of Italy, and the presence of a strong agricultural and farming economy together with a reduced infrastructure development, had a role to the growth of an economic model focused on small and medium companies that didn't experience the classical modernization process (with its current negative signs) therefore causing a true preservation of this territory from a socio-cultural point of view. University education is developed and focused with specific courses to the needs of the territory. In the centre of Cuneo an agricultural, forest and Food Science Department is present and offers three-year courses in health, social and humanistic field of studies, plus a graduate degree in science studies..

In 2004 in Bra, was founded the University of gastronomic Sciences (UNISG) and therefore Cuneo district is increasingly consolidating as an Academic center.

In many cases the level of attraction far exceeded the capacity of the didactic facilities. The quality of the didactic offer enhance the excellences of the territory causing the University Centre in the province of Cuneo to become a point of attraction.

In general, Cuneo citizens have a strong connection to their city and actively participate in urban life through neighbourhood committees which help to monitor the territory.

The "isolation" of the city, determined by its geographical position, is now overcome by the positive results on the quality of life (Cuneo is at 7 place in national ranking) and the desire to build an integration process due to the immigration phenomena of the last years and a dialogue with new cultures as opportunities of growth.

Top-left a view of the Mondovì contrada. Top-right detail sculpture "the Peano curve". Bottom: Civic Tower.





## Demographics

The city of Cuneo counts 56,104 inhabitants. More than half of the population lives on the plateau (34,059), the rest of the population is distributed in settlements isolated both one from the other both from the city, because of natural divisions determined by rivers, from the agricultural use of plain areas and mobility infrastructures (railways and highways). Demographic trends, after a drop in the twenty years from 1981 to 2001, were subject in the last fifteen years to a turnaround due to a phenomena of immigration, with substantial inflows from abroad, which generates critical

issues related to the inclusion of new citizens, often living in the suburbs, but it's also considered a resource.

An important feature of Cuneo population, is to have a high index of elderly people: on average there are about 169 people over 65 for every 100 under 15, compared with a regional average of 190, very high threshold compared to other regions in Italy and Europe. (see istat schedule data)

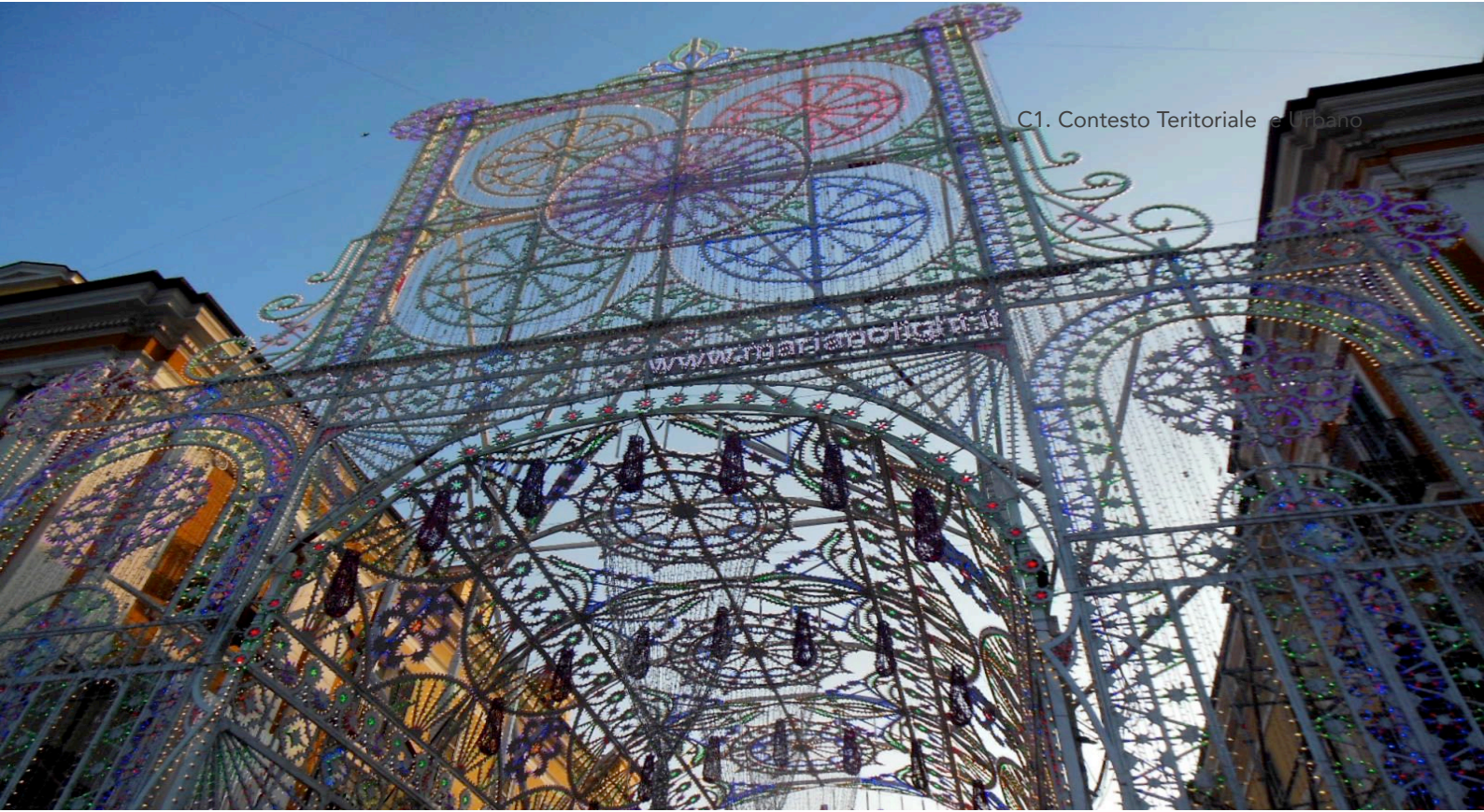
### ZONE STATISTICO-DEMOGRAFICHE DI CUNEO-ALTIPIANO



Demographic statistical zones		area sqkm	%	inhabitants mans-women-tot.			%	people per sqKm
1	CENTRO STORICO	0,5089	0,42	1.908	1.992	3.900	6,95	7.664
2	CUNEO CENTRO	1,9413	1,62	5.997	7.489	13.486	24,02	6.947
3	CUNEO SUD	1,2983	1,08	3.558	4.113	7.671	13,66	5.908
4	CUNEO OVEST	0,7682	0,64	2.496	2.814	5.310	9,46	6.912
5	SAN ROCCO CASTAGNARETTA	7,5587	6,31	1.566	1.632	3.198	5,70	423
6	CUNEO FLUVIALE	2,6114	2,18	260	296	556	0,99	213

Zone Statistico Demografiche	Superficie in Km <sup>2</sup>	%	Popolazione residente Uomini-Donne-Tot.				Densità abit./Km <sup>2</sup>
CUNEO ALTOPIANO	14,6868	12,25	15.746	18.313	34.059	60,71	2.319
CUNEO ZONA OLTREGESSO	36,7109	30,63	4.303	4.227	8.530	15,20	232
CUNEO ZONA OLTRESTURA	68,4766	57,12	6.790	6.725	13.515	24,09	197





### Traditions

The area of Cuneo is active in organizing events that traditionally take place every year and involve the entire population, also in the outdoor public areas during the more temperate months. Especially the city itself, is characterized by fairs, markets and food and wine events :

- The tuesday market, one of the most important,, where it's possible to find agricultural products, articles for clothing, farm machineries and small animals;
- Fiera nazionale del Marrone (National Chesnut Fair) takes place in October and hosts hundreds of exhibitors coming from all over Italy who fill for three days the main squares of the historical centre of Cuneo with scents, flavors and colors, offering to try the best products of Italy and Europe. In addition to moments dedicated to food and wine, the fair provides ample space to excellences of craftsmanship, educational workshops, cultural events, initiatives for tourists, exhibitions, performances and concerts;
- Grande Fiera d'Estate (Great Summer Fair), not right in town, but in the Ronchi suburb, between late August and early September, is divided into thematic areas and hosts shows and events
- Illuminata, a new initiative, established by 2015, which takes place in July, a great success for the city that attracts thousands of visitors from the Italy and abroad;
- Scrittorincittà (Writers in the city), literary exposition, different every year, now in its 18th Edition. More than one hundred authors meet annually, and presents their latest work to the public, offering their own interpretation of the theme of the year. A series of debates, to create more than a presentation-editorial promotion, but an opportunity for discussion and growth.

*Some pictures of the event Cuneo Illuminata - photo Domenico Olivero*







### Economic context

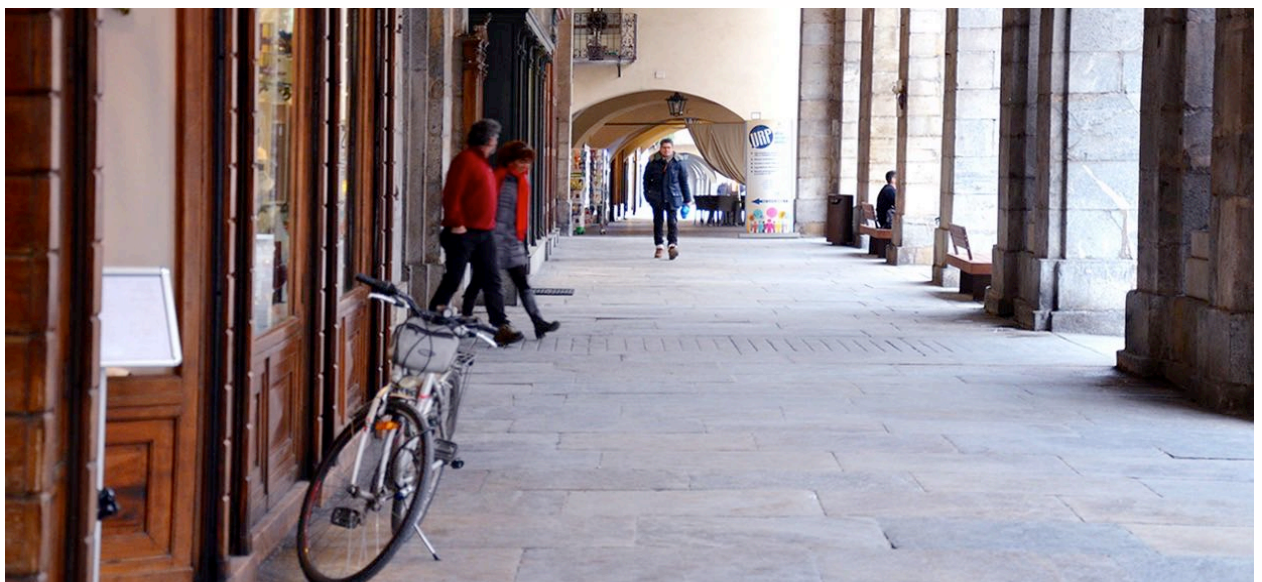
For years Cuneo district was considered "one happy island" which suffered less of the impact of the national economic crisis. More recently this security rate dropped due to an unemployment rate more than doubled from 2009 to 2013, to a growing number of involuntary part-time jobs, to a negative balance in the "stillbirth" of enterprises, to the decrease of the employment and the decline in agro food. The province however has been able to counter effectively the downturn and highlighted by 2014 a good recovery, returning to a position of absolute excellence, confirmed by 2015 results: fewer businesses closed and new registrations in line with the results of the previous year. Among these areas, best dynamics was performed by services and tourism, the latter increasingly important sector for the economic development of the territory.

In 2015 the province of Cuneo has lived a general improvement of the economic situation: the good performance showed by the local manufacturing sector have driven the regional

sector. The exports of goods from Cuneo showed substantial growth and the provincial labor market confirmed the position of absolute excellence in the regional and national scene. The general improvement of the economic situation is, however, an important confirmation in the provincial rankings on quality of life that highlights a great improvement in the general level of quality of life in 2015.

Tourism has in recent years an increasing importance within the territorial economic systems. In the European context, this sector now represents the third major socio-economic activity in terms of contribution to GDP and employment and is one of the few sectors that, even during the crisis years, has continued to show positive trends.

*Top courtyard of the Department of Agricultural Science, Forestry and Food. Below a view of the arcades of Via Roma*









# Strategic and territorial actual programs



### Strategic programs at territorial scale

Cuneo, until a few years ago remained partially excluded from European financial flows regarding "objective areas" targeted by EU policies, but today there are new opportunities due to the attention of the European Union regarding innovation, growth of economy of knowledge and the cross-border integration. The guidance tool which is the "Strategic plan of the city and its territory-Cuneo 2020", offered a territorial overview framing a plurality of cultural, social, environmental and economic issues. The strategic vision of Europe has supranational regions as the reference area to work to create a convergence of models of development and strengthen the infrastructures. Under this program, Cuneo is placed in a European region, crossed by Infrastructure Corridors 5 (East-West) and 24 (North-South). A macro-region that from Turin to Lyon, crossing the territory cuneese, arrives to Savona and Nice: Nice, airport passenger traffic hub, the port of Savona-Vado, relevant terminal of motorways of the sea, maritime routes and Turin strategic hub of Corridor 5 (Lisbon-Kiev).

In this context are listed :

- ReVAL is a cross-border project funded under the Interreg-Alcotra Italy-France 2014-2020 ", with the goal of developing bicycle tourism in the territory. The ReVAL project aims to develop the attractiveness of the territories around Cuneo and Chambéry enhancing the integrated offer for tourists and residents that move by bike.
- S.I.S.Te.M.A. Program: "Cuneo as border between the Southern Piedmont area, land of Nice and the Ligurian arc".

- PROJECT ABOUT A TERRITORY AMONG TERRITORIES (JUNCTION 1 and 2): for developing and implementing the strategic assets of the Cuneo territory in the context of transnational territorial platform of Liguria and Piedmont.

The city has already started a process for "strategic planning for 2030 Cuneo" that will develop the following themes:

- "City" as a territory consisting of the city of Cuneo and surroundings, including the valleys. A territory of which it is necessary to identify the specific features (such as those of the mountain area), and the resources that constitute emergencies (environmental, cultural, etc.).
- considering the territory and its different elements (mountain, water, etc.) as only one system strongly connected and capable of guaranteeing the specificities and promote local excellences.
- Working on long-term strategies, including positive experiences already fulfilled and the relevance of the objectives already defined in previous strategic 2006 planning.
- Promoting young people's ideas to support city's development.
- Facing the economic feasibility of projects
- Linking together production, economical development and the territorial matter.



# C2 STRATEGIC SITE





## Description

The strategic area of European 14 fits in the urban part interested by the call " Periferie al Centro". This choice originated by the need to continue the work already done on the old town with recent interventions related to PISU (the Integrated Urban Development Programme), by activating many initiatives dedicated to the southern part of the city, still suffering because of its social and urban identity.

This is the part of the city most in need: the poorer areas, without attractive commercial areas, mostly visited by residents, where "rent" signs abound and cultural and leisure offer is lacking, opportunities for meeting and poor animation and public utility services (offices, banks, medical, ...) are less than elsewhere.

The new part of town, which developed from the years ' 60/' 70 with Donatello district (before) and Sao Paolo district (then), is today incomplete in its overall definition: unused abandoned sites (ex. barracks), lack of resources needed for accommodation and full usability of certain areas already available (ex. Piazza d'Armi), fragmentary nature of design and implementation of

construction projects related to expansion towards the south of the city.

European competitors are called to build a strategic idea that make these elements to fit in a system thanks to the opportunity given by project site, central to the strategic area but also to the whole urban axis.

The project will work as alternative pole, in contrast to the historic centre, in a complementary relationship: on one side the consolidated city, with its monuments; on the other hand, the city of the future, with the park, the social and cultural hubs, meeting points, etc.

*Viaduct Adolfo Sarti under construction - source Comune di Cuneo*





**Programs** in progress  
or completed, at  
strategic area scale



Restoration of former-Barrack Cantore - Lotto B - Archs. Alessandra Raso, Matteo Raso and Eng. Giuseppe Forte



### Programs in progress or completed at strategic area scale

- P.R.U.S.S.T. Southern Piedmont: "A natural gateway to Europe" where it is even considered the promotion and defense of Gesso and the Stura rivers
- CONTRATTI DI QUARTIERE II: "super sharp triangle"
- CONTRATTI DI QUARTIERE III: "Cerialdo: an interesting neighbourhood"
- INTEGRATED LOCAL DEVELOPMENT PROGRAMMES - PISL: "Cuneo 2015 – a date with polycentric Europe"
- INTEGRATED TERRITORIAL PROGRAMS – PTI: "Cuneo and its three valleys: the agro-industrial and food quality"
- INTEGRATED PROJECTS for URBAN DEVELOPMENT- PISU: "*the three dimensions of the Cuneo*"-regional operational programme funding (P.O.R.) 2007/2013 financed by the European Regional Development Fund (E.R. D.F.), in the axis dedicated to "territorial development". The proposal regards the area of the historic centre, and focusing its interventions on Via Roma and Stura side, from the former Foro Boario in Piazza Virginio.
- "PERIFERIE AL CENTRO" new models of urban livability-public call for urban regeneration and the safety in the suburbs held by the Presidency of the Council of Ministers, Ministry of economy and finance, Ministry of infrastructure and transport, the Ministry of cultural heritage.

Piazza della Costituzione





## Description

The second important axis, called City Gallery (SS705), and entrance to the new town, partly that runs partly in tunnels and partly on the surface and along with Nizza street defines four areas with different social and urban characteristics:

- Gramsci neighbourhood that continues the residential sector established in the postwar period and has the issue of the "skyscraper", the Cuneo finance building, inaugurated in 2001 and since then largely unused, together with the 18 unused accommodation for which solutions are under development, in collaboration with the State Property Agency, so as to put them at the disposal of emergency housing.
- Cuneo Nuova neighbourhood formed partially from the same urban tissue that characterize Gramsci quarter and by a widespread housing with Villas and isolated buildings blocks up 4 floors located mainly along Viale degli Angeli, on urban margin that faces the Gesso and constitute the "building net" of downtown San Rocco Castagnaretta, and in general the southern suburbs toward Borgo San Dalmazzo.

- Donatello neighbourhood, on the West of the urban axis, consists of both public and private housing, starting from the years '70 and '80
- San Paolo neighbourhood.

These last two neighbourhoods, that go down to the South (Borgo San Dalmazzo) represent in fact its more peripheral area. Along the Viale Angeli through southwest of corso Giolitti are so spread out a set of villas and buildings dating back to the last decade of the nineteenth century or early twentieth century.

These are now incorporated in the latest development of this part of the city, more exclusive but with a low cultural profile. Their identification punctually in PRG aims to prevent its disappearance for demolition and new construction, having this buildings a precise heritage value on civil building modules with low density in the Umbertine city.

*Square between via Riberi and via Bongioanni in Donatello Quarter*





## Actions

The urban tissue has the same characteristic as the modern city in discontinuity with typical traditional features (porches, shops and stores nearby coherent with population density); it's also characterized by the presence of urban empty areas, and for which it is necessary to identify new functions and identities. The strength of these neighborhoods stands in their local roots and sense of belonging that has been created around the neighborhood committees activism. Recent social transformations will have to compare with the new dynamics of social cohesion, especially in enhancing a dialogue between elderly and young people, between old and new inhabitants. The characteristics that portray these outlying areas offer to European an opportunity to start shared path with the objective of avoiding the risk of fragmentation of this portion of the city.

In the project proposal we must take into account the current urban scenery to which the site should be linked from the point of view of accessibility, mobility and enjoyment on a human scale.

The municipality of Cuneo intends to implement for the area an integrated interventions and actions with the following objectives:

- defining new urban functions; to reduce situations of urban decay, with the restoration of containers under-used;
- to improve urban furniture and the existing building stock;
- to connect the Stura and Gesso River parks;
- to reactivate effective connections outskirts-Centre, with new mobility services;
- to offer additional services to outlying areas, with the activation and development of new utilities and the creation of new socio-cultural facilities and services;
- creation of community facilities and attraction poles and the implementation of public services for urban safety.





# C3 PROJECT SITE



## Description

The project site is the portion of the former Caserma Montezemolo once used as fuel warehouse, which now represents a wide free area, result of the abandonment of buildings and public spaces, no more used for military function. An element of discontinuity in the urban tissue that are under the risk of becoming an irreparable element of fracture. Within the area there are four blocks and other parts attached, which can be demolished and therefore recovering and redistributing the volumetric dimensions under the new functional requirements.

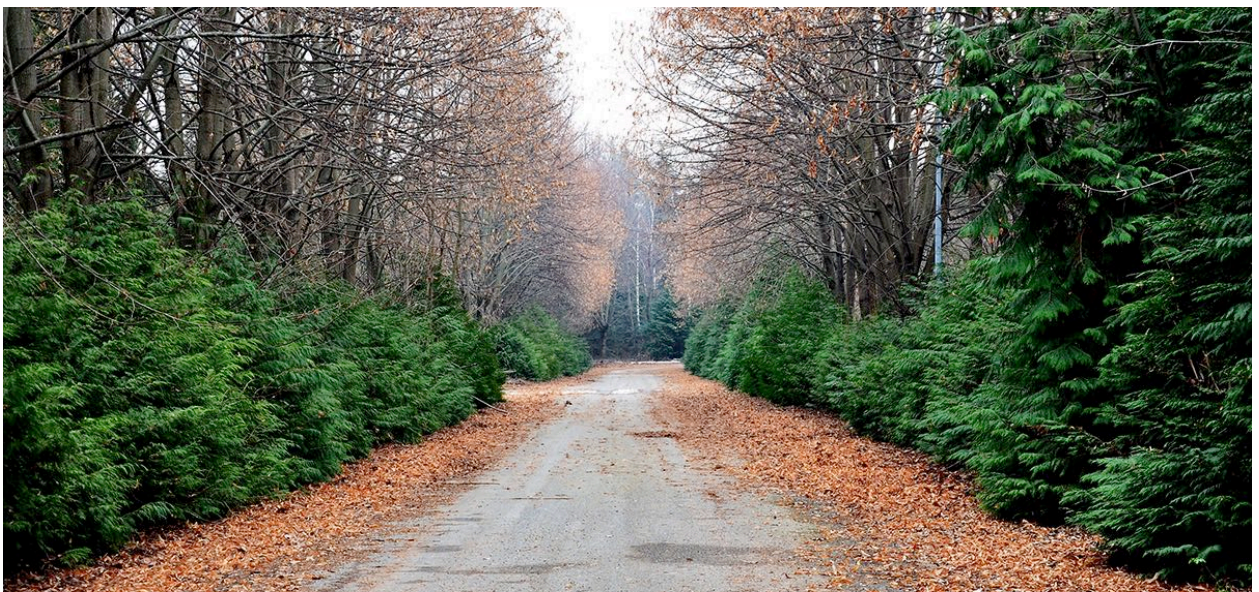
The European project will nevertheless, take into account the cost/benefit ratio related to the eventual recovery of the existing buildings. The property was recently given by the State to the city of Cuneo and the operations are now under completion. A portion of this area will be temporarily used as a military workshop until his new location scheduled for 2018.

To promote interventions in the free portion, by the end of the year will be built a fence that will divide provisionally the two lots. The site is located in an area of strategic importance to

national level: at the entrance to the city from the new viaduct Adolfo Sarti, along the main road of access for those coming from the South, near the mouth of the tunnel of East West connection with territories beyond Gesso and over Stura, close to large parking areas and public parks. The physical boundaries that the project will have to face represent an important challenge: on one side the former parade ground today Ferruccio Parri Park, is a large public green area; on the other the active military specialized mechanic Center Caserma Montezemolo. It doesn't seem to exist a willing of dismantling the Caserma Montezemolo, then the project must take into account this pre-existence.

Current site:-dimensions/typological total area:

- total surface 4.2 ha
- total surface buildings 5300 sq.m. circa
- total volumes 24,000 cu. m. circa





## Project Guidelines

The project aims for the functional recovery of the site on which the Administration wants to locate a center of cultural production in Cuneo with green spaces and multipurpose buildings for associations, meetings, sporting events, exhibitions and shows, etc. The range of users of the area requires a proposal capable of considering the possibilities for maximum usability. The exact volumetric dimensions are not defined, but one of the peculiarities of the area should be the low environmental impact of its realization and management, through the use of innovative and sustainable solutions of construction, rainwater storage and disposal...and more. In the PRG over the area (in approval for March 2017) will be specified uses parameters related to the great presence of green portions and services in the area. It's fundamental to preserve as much as possible the permeability of the ground, to limit light pollution, to provide a good acoustic insulation for indoor structures. In addition to project reports regarding the existing project of the former parade ground (Park Ferruccio Parri) that is comprehensive of the green area, we must preserve natural relations with the river parks, creating the connections if needed. So, the designers have the freedom to choose to reduce or maintain the existing structures, that doesn't

have a true architectural value, therefore not subject to constraints.

European project will be central to Cuneo's future development, due to the linear non concentric conformation of the city. A new urban hub as a reference point could be the answer to the necessities of the the new local production activities connected to culture, environment, sports and to the new generation Y's lifestyles, in harmony with the identity that the historical centre represents. Past and future connected along an axis that is both physical and productive.

## Project/process

The project must take into account a steps development whereas the process of development of the area has already been activated with the following actions:

- approval of variation to PRG (till 2017) for the introduction of functions in harmony with the destination of the site as a green area.
- the acquisition of the former fuel depot Caserma Montezemolo that will include the total availability of the area into two lots (by March 2017)
- Division walls of lot available with the part still in use to military forces (until 2017)
- Availability of the second lot by the end of 2018
- The area which housed the fuel storage area has already been recuperated.





## Relationships with European 14 - Productive Cities

Restoration and architectural conversion of the former Caserma Montezemolo (fuel warehouse) and its surroundings will help to achieve a pole of attraction for the city and its surrounding related to cultural activities, leisure and sport. The project is expected by 2018, being financed by 2018/2020 European funds, to complete the acts of regeneration of the southern suburbs and especially of contiguous area of the former parade ground, now Park Ferruccio Parri.

A smart pole, able to attract in the South of the city, now barely involved in events, or crossed by users or visitors who will help to animate the urban context and support several activities and services on a site that today has cannot keep up with the other parts of the city, both for the economic crisis that for competition with other urban areas, recently rehabilitated. (downtown and the historical part of the capital), especially in attracting visitors from outside the town.





# CREDITS

## Editorial

### Edited by

European Italia

### Editorial staff

Rosalia Marilia Vesco, *national secretary, coordinator of the Scientific Committee*

Virginia Giandelli, *vice president and member of the Scientific Committee*

Livio Sacchi, *President and member of the Scientific Committee*

### Scientific contributions

National and European Scientific Committee

### editorial assistants

Claudia Cesario

Martina Genovesi

### Contributions to the documentation from the City

Federico Borgna, *Mayor*

Alessandro Spedale, *Councillor for the Budget, Culture, European Tenders*

Virginia Ghibauda, *Responsible for Estate sector*

Luciano Monaco, *Manager in Public Works Sector*

Luca Gautero, *Manager in Environment and Territory Sector*

Salvatore Vitale, *Technical Officer - Responsible of Buildings*

Elena Lovera, *Responsible for strategic planning*

Valter Martinetto, *Executive Technician, Service of Territory*

### Graphic design

Rosalia Marilia Vesco

### Translation

Martina Genovesi e Norma Tello

## Materials

### Photos, plans and documents

#### Cartographic materials

Provided by City of Cuneo:

Giangiaco Bertaina, *project office-Service of Territory*

Flavio Frison, *S.I.T. Territorial Information System/web officer*

#### Photos

Domenico Olivero (p.6,10, 24),

Teresa Maineri (p.12)

Targatocn.it (p.12)

Marilia Vesco (pag.7,8,11,13, 15,17,18,20,21,22,23)

Osservatoriopums.it (p.5)

Grandaln.com (p.24)

#### Maps, aerial photos and CTR

Google corporation (aerial photos)

Microsoft Corporation (aerial photos and semiaerial)

Sit (Territorial Information System)

Piedmont Region

## Useful links

### Links

[www.comune.cuneo.gov.it](http://www.comune.cuneo.gov.it)

[www.regione.piemonte.it/territorio/cartografia](http://www.regione.piemonte.it/territorio/cartografia)

[www.turismocn.com](http://www.turismocn.com)

[www.cuneoholiday.com](http://www.cuneoholiday.com)

[reval.bike/it/home/](http://reval.bike/it/home/)

[www.fondazionepeano.it](http://www.fondazionepeano.it)

Siti web di concorso:

[www.european-europe.eu](http://www.european-europe.eu)

[www.european-italia.eu](http://www.european-italia.eu)

[www.european-italia.com](http://www.european-italia.com)

[www.facebook.com/EuropeanItalia](http://www.facebook.com/EuropeanItalia)

[www.youtube.com/europeanitaliavideo](http://www.youtube.com/europeanitaliavideo)

### Video interessanti sulla città di Cuneo

Tourism promotion Video:Traders tell the City  
[watch the video](#)

Cuneo - portraits of the cities  
Teca RAI- 1967  
[watch the video](#)

The Illuminata of Cuneo  
[watch the video](#)

The brief is an integral part of the complete site folder, with the graphic and photographic documents, available in the download area of the european website to the registered team. It is also recommended the study of the document *in-depth-file.pdf* in the *brief* folder of the download area. In this documents there are insights useful for the project concept.