

EUROPAN 6 – WIEN – ÖSTERREICH

Location: Wien, Simmering

Population: 1,160,000 inhab.

Study area: 28 ha || **Site area:** 0.8 ha



CONURBATION

The future enlargement of the European Union will place Vienna, capital of Austria, in the centre of a European metropolitan area, between Bratislava, St. Pölten, Budapest, and Brno. Construction of Viennese housing (which attained legendary status during the “Red Vienna” period of the 1920s) has been stopped by saturation of the inner suburbs. As a result, the policy is for infill and densification in these areas, alongside improvements to infrastructure (e.g. extensions to underground railway lines) and the development of urban hubs such as Donau-City.

SITE

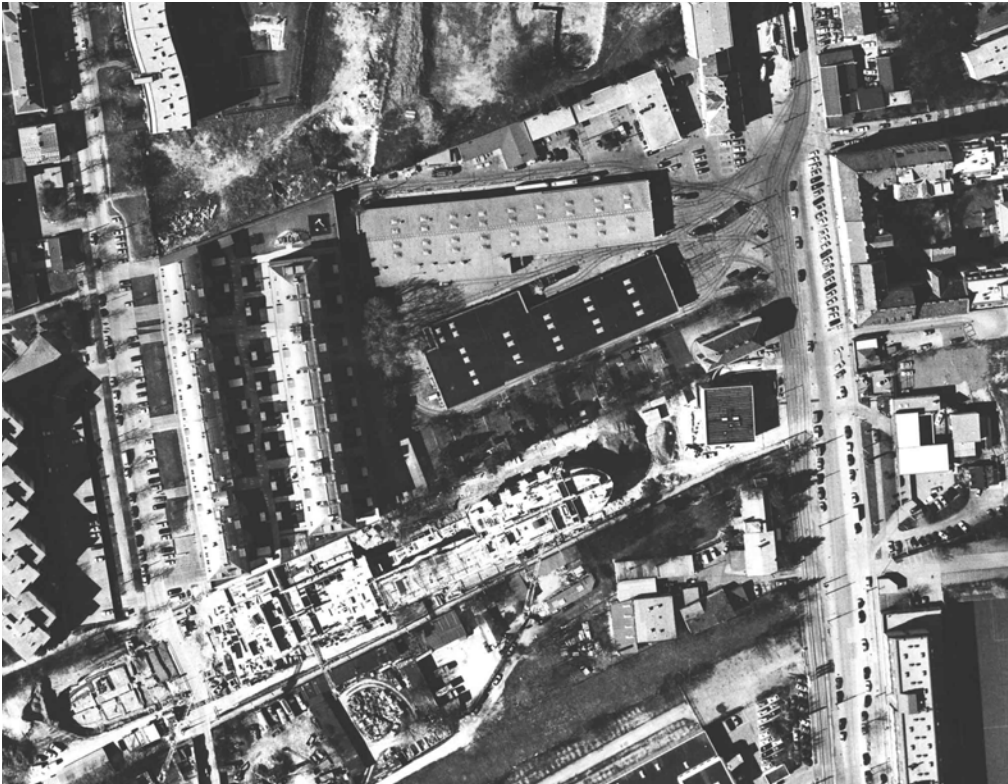
Simmering, located south-east of Vienna, has developed since the 19th century into a working class district with numerous industrial areas (harbour, railway workshops, gasworks, and electricity power station) with social

housing complexes set in green spaces. Bordered by infrastructures from a variety of recent periods: the Danube canal, rail tracks and highways, Simmering is now faced with the spatial consequences of recent shifts in the labour market: abandoned industrial areas form a challenge to present and future urban developments.

FUNCTIONAL ISSUES

Located close to the Simmeringer Hauptstraße (traditional shopping street with road traffic) and the new underground train terminus, the site must act as a catalyst to resolve Simmering’s pressing problems. An ambition for mixed-use development must be translated into an urban programme capable of providing new forms of living and urban activities that facilitate integration into the new market economy.

EUROPAN 6 – WIEN – ÖSTERREICH



SOCIAL ISSUES

The city's exterior affairs department, the elementary and secondary schools, indoor and outdoor sports facilities, should be envisaged as a network of educational and social services in order to counter the high rate of unemployment.

PERCEPTUAL ISSUES

Disparate spaces run from north to south in parallel: the "urban" Simmeringer Hauptstraße, with arcaded social housing immediately behind it; backyard developments squeezed between Simmeringer Hauptstraße and Kaiserebersdorferstraße; countryside images (a "Heuriger" restaurant next to a petrol station). This co-existence forms a fascinating urban backdrop.



PROGRAMME

Given the site's role within the local network, uses must be split as follows: 30% housing, 30% retail activities, 40% flexible use. Development is to be high density with vertically mixed uses, attention being paid to the role of new communication technologies.

THEME

The new subway terminal and Vienna's infill policy offer new possibilities for restructuring a partly dilapidated "suburb" engulfed by Vienna at the turn of the 19th century. Being located at the traditional main link to the famous Central Cemetery the area is literally an "in-between". The project should be part of an overall policy of human and physical integration.