

**TOPIC**

Near the city centre, on a strip of land bordered by the River Saône and a lake, a harbour area is undergoing a change of function, leaving an exceptional site for development. Chalon-sur-Saône envisages a staged transformation to create a new district linked to the centre, which will become a major attraction for the conurbation, highlighting the harbour identity and offering a different relationship with the water and different kinds of usage. This project will be fully in line with two strong political priorities: constructing city on the city and an active concern for sustainable development.

CONURBATION

Chalon-sur-Saône is situated on the main Paris-Lyon-Marseille axis. As Burgundy's second city behind Dijon, it has a remarkable historic centre and is economically and culturally one of the region's most dynamic cities (city of pictures - Niepce and Kodak museums, institute of the image - and of street art - "Chalon in the street").

Expressing a preference for detached houses, the population is leaving the city centre for the outskirts. In order to control urban sprawl, the city would like to offer new alternatives close to the city centre whilst continuing to improve the banks of the Saône.

SITE

Situated 900 m from the city centre, the site marks the southern entrance to the town from the Pont de Bourgogne.

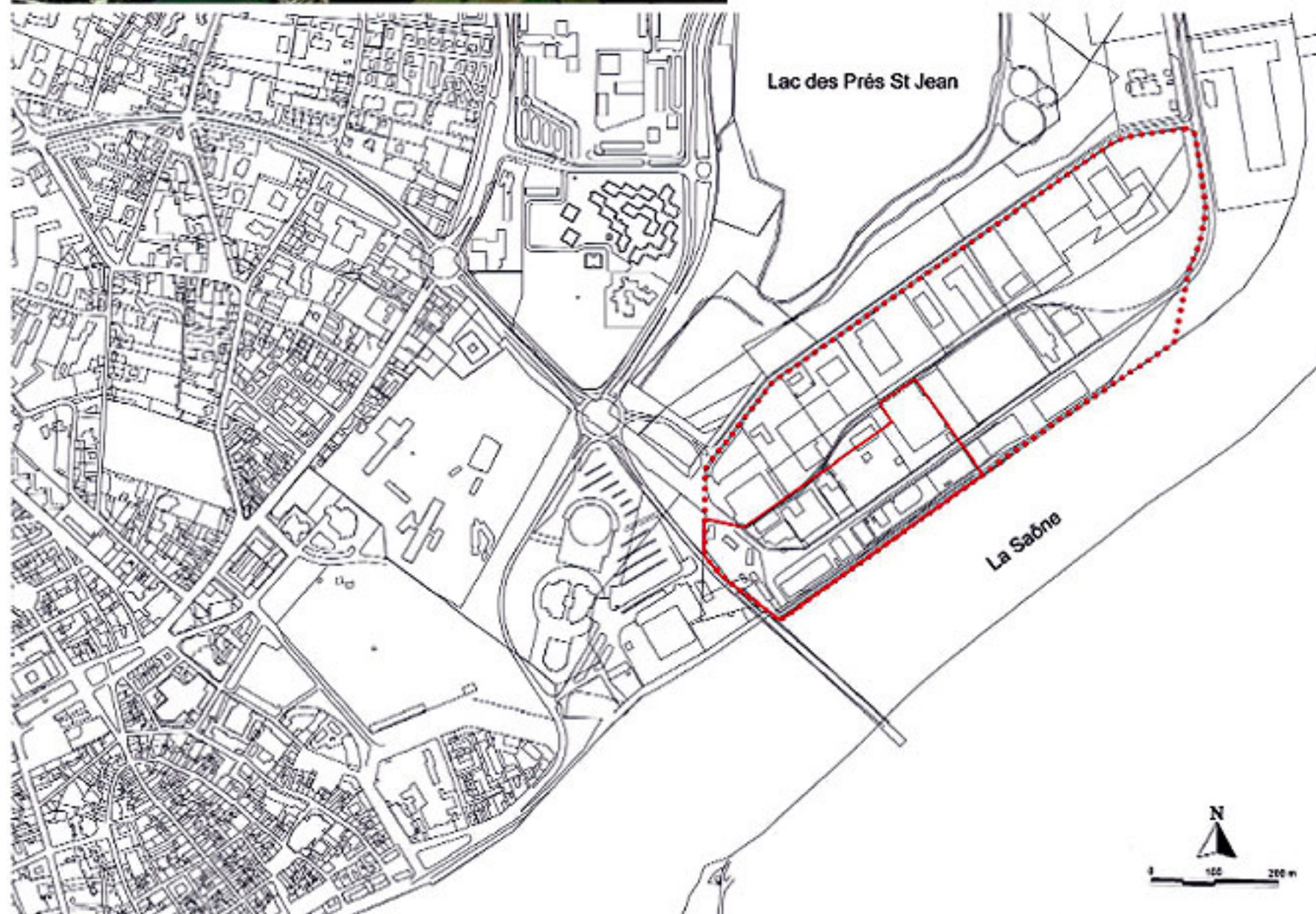
Bordering Prés St Jean Lake and its district of large blocks to the north and the River Saône and the green stretches of Saint Marcel to the south, the site consists of a northern fringe, occupied by still active construction materials yards (study area), and a southern fringe linked to former harbour activity (operational area) where cranes and a monumental gantry generate a marked identity.

Population : 50 000

Location : Port Nord

Competition Site : 30 ha

Project Surface Area : 6 ha

**PROGRAMME**

The scheme is to construct approximately 300 housing units in the area of operation together with shops and local services. The housing offered will be diverse, so as to attract a mixed population and thereby generate social links.

The aim will also be to create a centre for tourism and leisure on the banks of the Saône, which should include ideas for green transport.

The public spaces, with their water associations, should be developed in such a way as to enhance the connection between the district and the city, while creating an identity that reflects the site's industrial and maritime past (gantry, cranes).

ISSUES**Social / functional**

The challenge is to extend the city centre by constructing a new district that will enhance an access route to the conurbation. The housing should be designed to attract and retain a varied inner-city population.

Sensitive

The attraction of this district will come from its natural potential and its maritime identity. The idea is to propose a framework with the theme of "harbour life" by promoting a sense of identification with the banks of the Saône.

Sustainability

In keeping with the city's sustainable development policy, special attention should be paid to the development of the district, in terms of respect for its spatial characteristics and history, as well as to the provision of green transport.

