

**TOPIC**

Marked by the now-defunct mining industry, the conurbation would like to remould its territory by exploiting its landscape and urban qualities. The creation of a Major Urban Park on an industrial wasteland (project in progress) should provide the opportunity to create a new urban polarity by working to integrate this park into the unstructured and sprawling fabric of mining estates and by providing new developments that will create a balance between built and natural elements and the local environment.

CONURBATION

Situated 30 km south of Lille, the Communauté d'Agglomération d'Hénin-Carvin wants to take advantage of its geographical position in order to find a new direction after the gradual closedown of its mining operations. Restoring its dynamism involves converting these wastelands (tertiary activities, logistics, green tourism, etc) and reinforcing the urban structure to meet the needs of its local population and of the Lille metropolis.

SITE

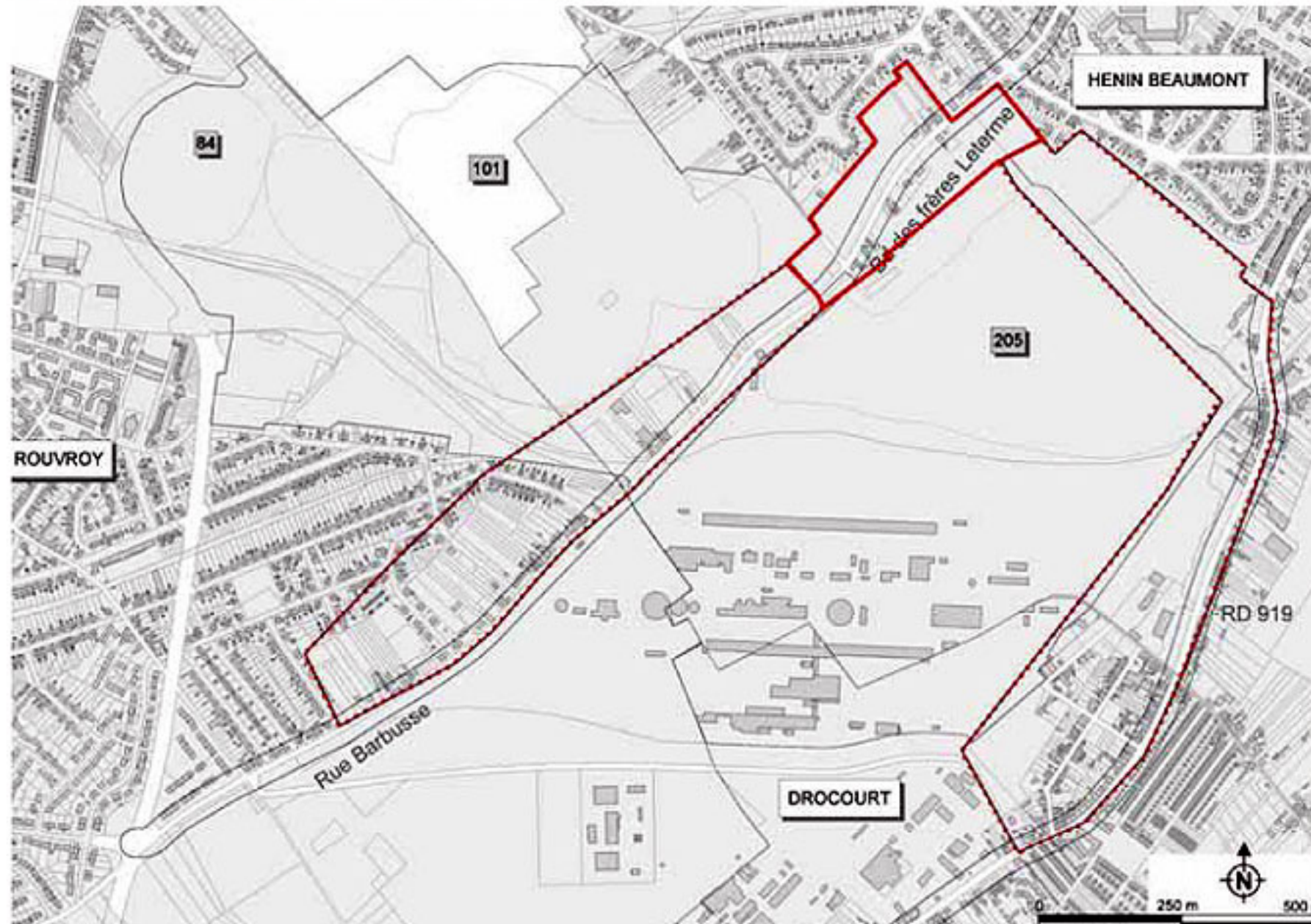
The site is particularly distinguished by the presence of slag heaps, leftovers from the mine works, which overhang the various mining estates around. Situated on the edge of a future Major Urban Park, the study site encompasses two structural axis roads, as well as typical mining estates (terraces, detached housing, garden estates). The operational area, situated near a mining estate and between two slag heaps, is at the heart of a landscape that has been moulded by mining activity, with a few scattered houses and large "pockets of greenery".

Population: 50.000

Location: Les Cokes de Drocourt

Study area: 61 ha

Project area: 5.9 ha



PROGRAMME

The scheme is to create approximately 300 mixed housing units (townhouses, small blocks) within the operational area, for rent and owner occupation, with particular emphasis on the qualitative approach to innovative design, in keeping with the nearby garden estate. The scheme should also include shops and local services. Consideration should be given to the design of the public spaces as a means of structuring the territory physically and socially (handling of the edges of the future park, linking with the mining estates).

ISSUES

Social / functional

The challenge is to create a link with the future urban park and between the mining estates, but also to develop the urban fabric of the sector, which will require innovative housing for the existing and future populations.

Sensitive

The handling of the boundaries between the built and unbuilt, between the mining estate and the park, is crucial to this sector. The aim is to take advantage of the closeness of the future park and to increase the density of the urban fabric without undermining the natural qualities of the site, drawing inspiration from the typologies of the neighbouring garden estates.

Sustainability

The objective is to give a new identity to an unstructured territory that bears the stamp of its industrial past, by taking advantage of its landscape qualities and promoting social diversity as a means of combatting ghettoisation.





