**Legend:**

- Location Europend
- Woods and green area
- Water
- Industrial area
- Living area
- New living area

Europen8 location in Zwolle

**TOPIC**

Between the new Stadshagen housing development and the existing Westenholte site, the barrier posed by the railway line must be counterbalanced by way of coupling the arrival of a satellite station with the creation of a new relationship between old and new. A new transferium will be created here, with the accent placed on spatial and programmatic design.

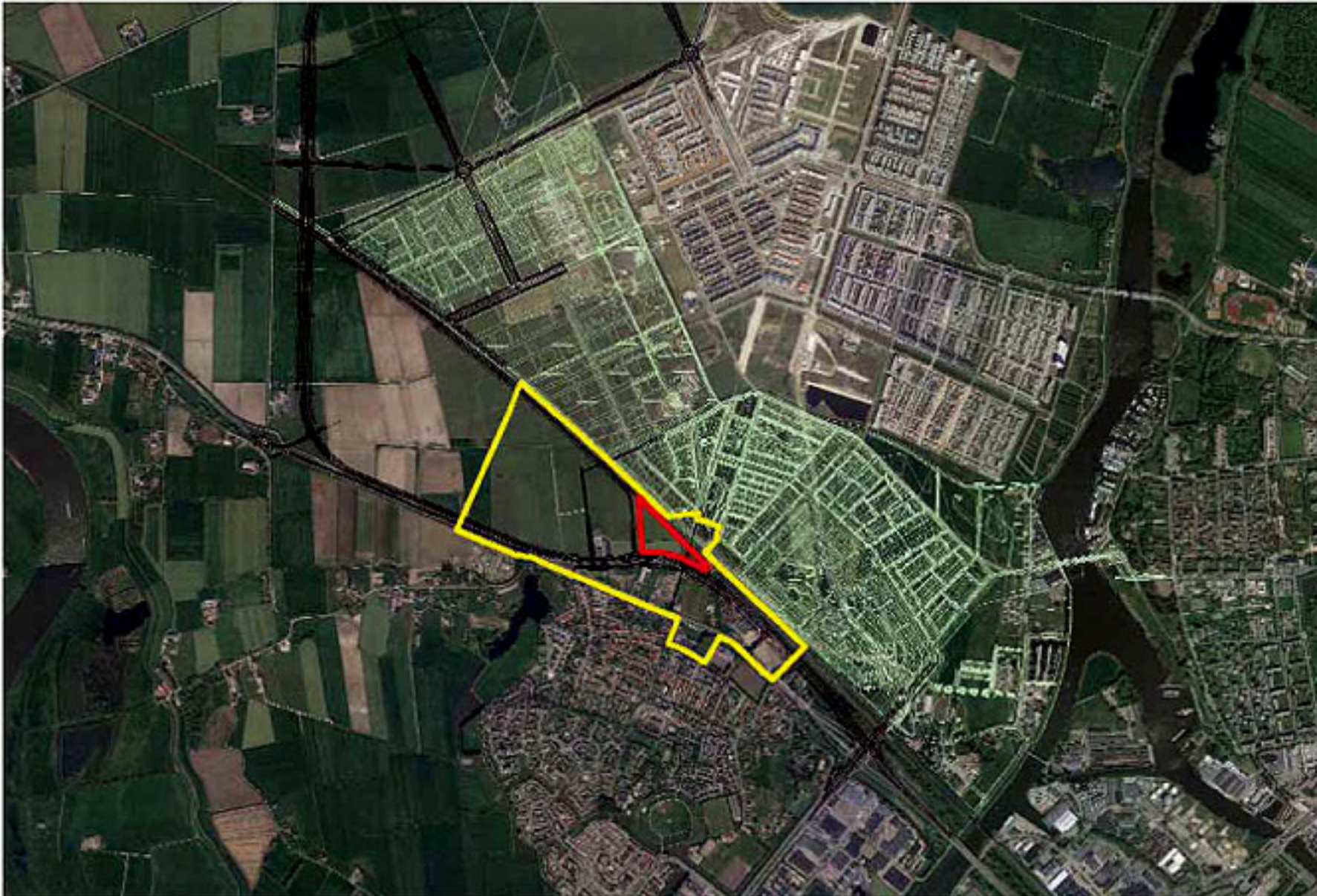
CONURBATION

In 1950, this town, situated in the north-eastern Netherlands, counted 50,000 inhabitants. At the end of 2004, this figure climbed around 115,000 inhabitants. This strong growth is especially due to Zwolle's central location, as an entrance gate to the north-eastern Netherlands. In the period 2004-2020, 16,000 housing units will be built. This new development is taking place in the north-eastern urban district, Stadshagen, where the new housing development will be rounded off to a total of 12,500 housing units. The Westenholte Noord site forms part of the second phase of Stadshagen, where 4,000 new housing units will be built.

SITE

The study area (yellow contour) is wedged between Westenholte/Voorsterweg and the Zwolle-Kampen railway line. It forms a crucial fulcrum in the direction of the historical town centre. Here, we find the remains of the old cultural landscape that has now lost its function. It has become a forgotten zone, a kind of no man's land confined between physical barriers. By re-routing the road, Westenholte can be completed in a north-eastern direction, and this will create space for an urban hub between Stadshagen and Westenholte, coupled to a new station. The study area comprises the zone between the existing infrastructure; the intervention area forms the core of this zone, serving as a transferium for modes of transport and residential environments. The site is owned by the municipality, which will speed up its realization.

Population: 115.000**Location:** Westenholte Noord**Study area:** 43 ha**Project area:** 2 ha



PROGRAMME

Westenholte and the new Stadshagen will be woven together into several long lines, within the study area, such as the cycle route that crosses the railway line, with its station, and the shortly to be-rerouted Voorsterweg, part of the Stadshagen ring road. This creates the opportunity for new, high-density urban residential environments. At the same time, the transferium function can be supplemented with local functions in the health sector, and the provision of services. This is also a spot for an urban sports centre.

This centre opens into the green urban surroundings, with stepped housing with gardens.

ISSUES

Social / functional

The intervention area is a binding element between the existing and the new, this can be translated by a mix of differing housing types. There is no shopping centre, but a facility zone. Important terms are public safety and accessibility.

Sensitive

A connection between the neighbourhoods should also be made, whereby, spatially (visually), the barriers of infrastructure are levelled.

Sustainability

Are a determining theme, with flexibility (interchangeability of programme) and noise playing a particularly important role. The new Voorsterweg creates noise levels that are higher than is legally permitted; this will require a creative solution.



