

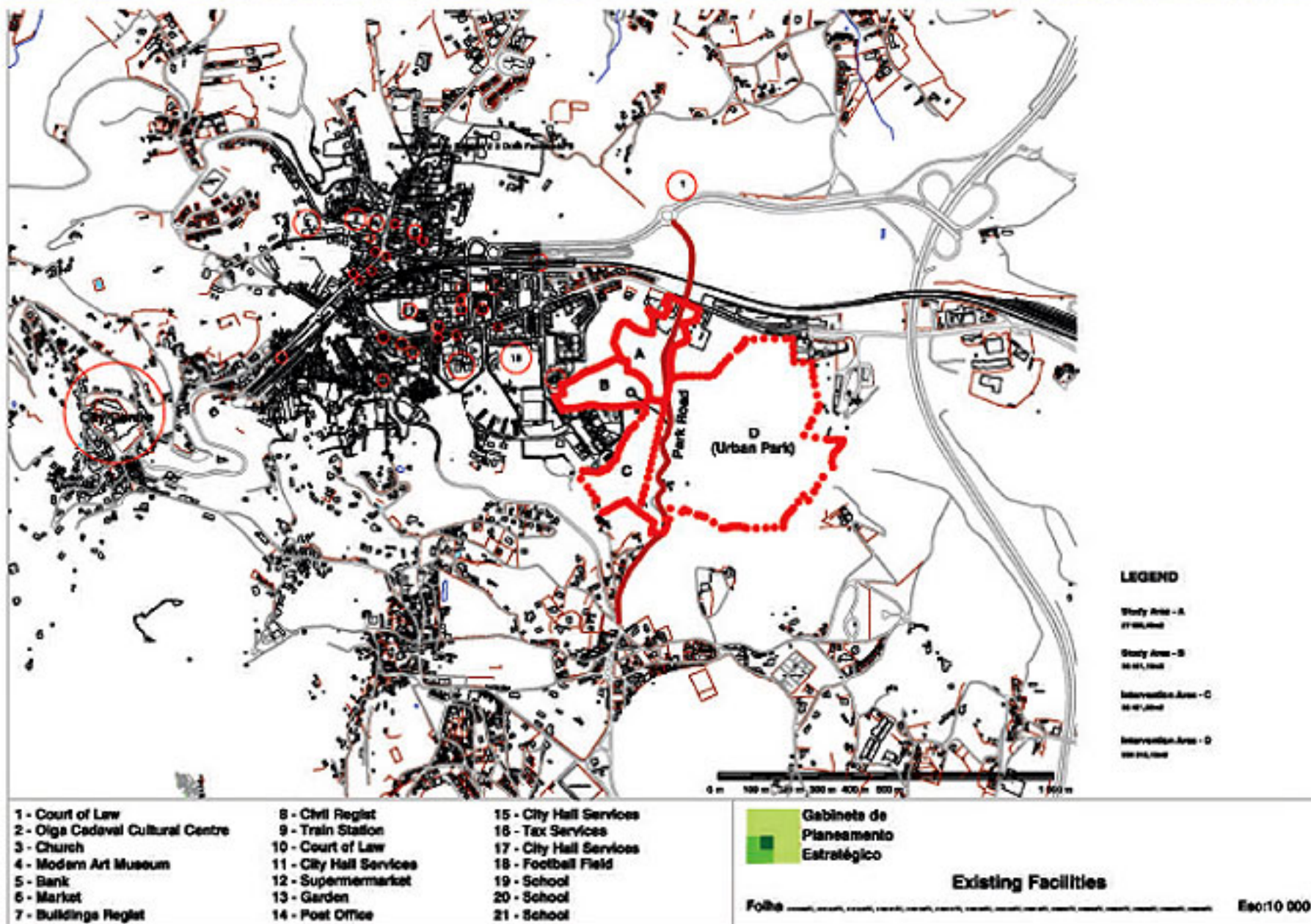
Development approach + landscape sustainability.

Highlights - Landscape attractive site. One owner (Social Institution).

Sintra is a world heritage site classified by UNESCO, located 25 Km from Lisbon.

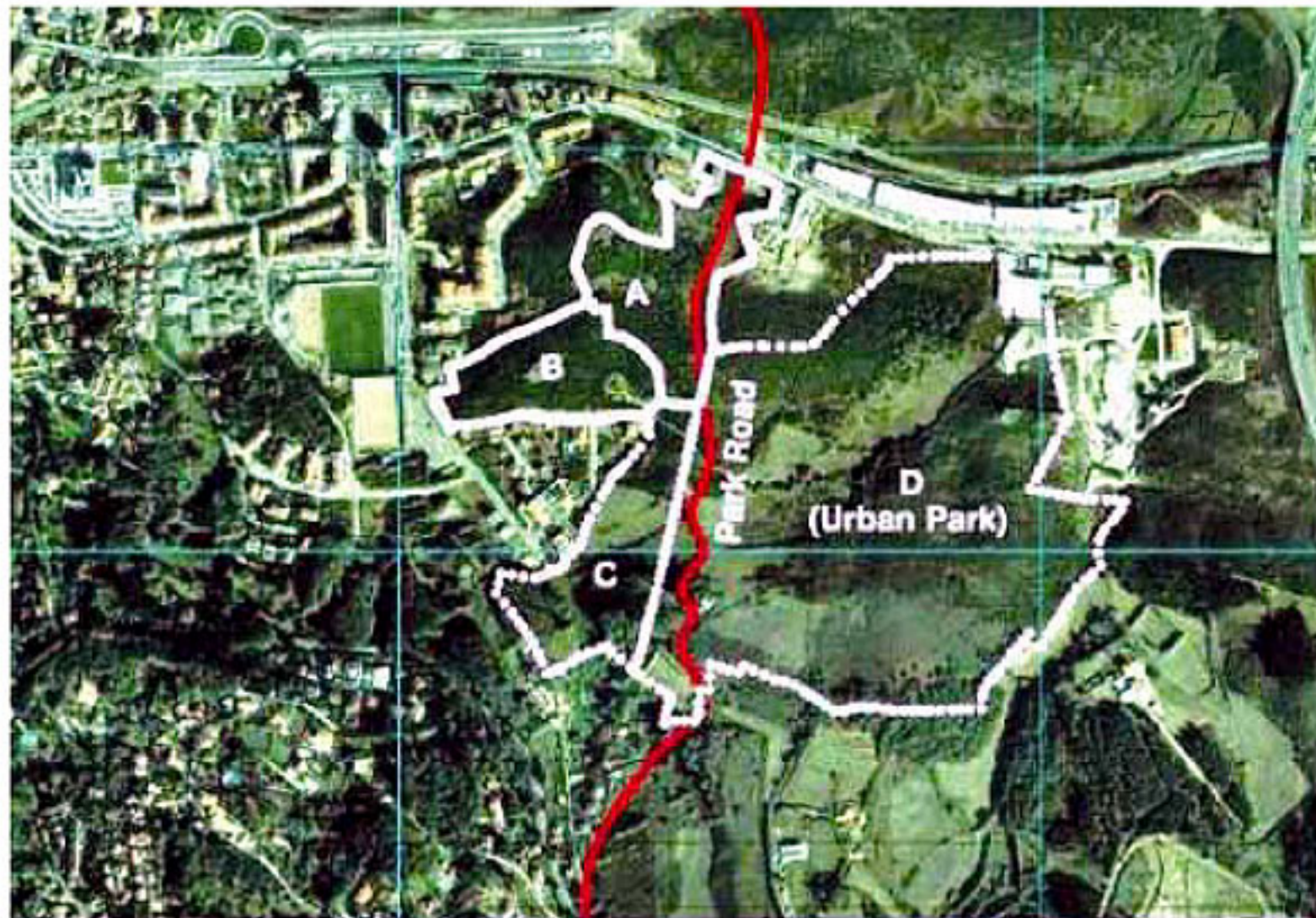
Rapid growth from the 60s/70s forward, with careless or non existing urban management: decay, buildings with no architectural quality and vacant territory.

The land is social-private property, with a partnership agreement with the Municipality for this intervention. Close to the railway station and some facilities (sports, schools, shops). A part of the area is ecological protected grounds. Contiguous to different urban morphologies. There is a planned highway (park avenue) to be constructed, crossing the site.

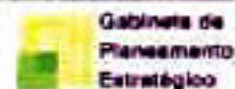


Study area: 33.47 ha

Project area: 6.41 ha



- | | |
|----------------------------------|-------------------------|
| 1 - Court of Law | 8 - Civil Registry |
| 2 - Olga Cedural Cultural Centre | 9 - Train Station |
| 3 - Church | 10 - Court of Law |
| 4 - Modern Art Museum | 11 - City Hall Services |
| 5 - Bank | 12 - Supermarket |
| 6 - Market | 13 - Garden |
| 7 - Buildings Registry | 14 - Post Office |



STUDY AND INTERVENTION AREA

Folha 1 2 3 4



PROGRAMME

Sustainable intervention between contiguous /peripheral zones and the heritage context, is the strategic goal.

Intervention Area: to project mainly buildings of housing and shops, facilities and complementary services, highlighting Portela's centrality and connecting different access and urban tissues, by using the new avenue.

Study Area: sustainable (leisure) uses for the ecological protected grounds area - urban leisure park.

ISSUES

Social / functional

To solve the community/intimacy duality.

Social and generational cohesion.

New "e-culture" technologies - quiet working places.

Sensitive

To create landscape: new scenography.

Sustainability

Compatible use with the ecological protected grounds.

Innovation in the natural/built landscape relation.



