



LET'S TALK ABOUT LANDSCAPE !
a proposition for the Valley of the Pede river

















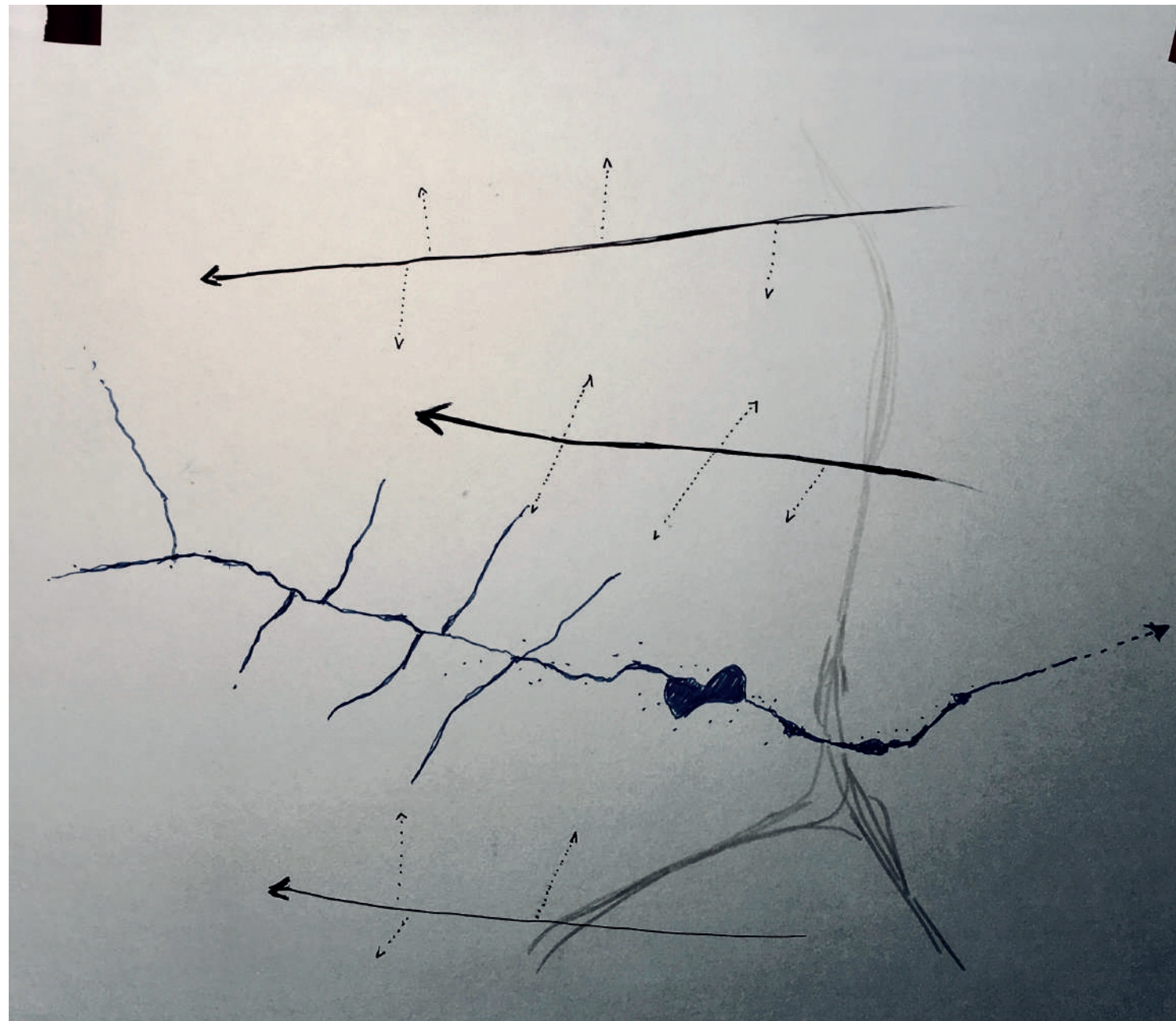








What can we do to stop that?



The hurry of the city

The time of the water

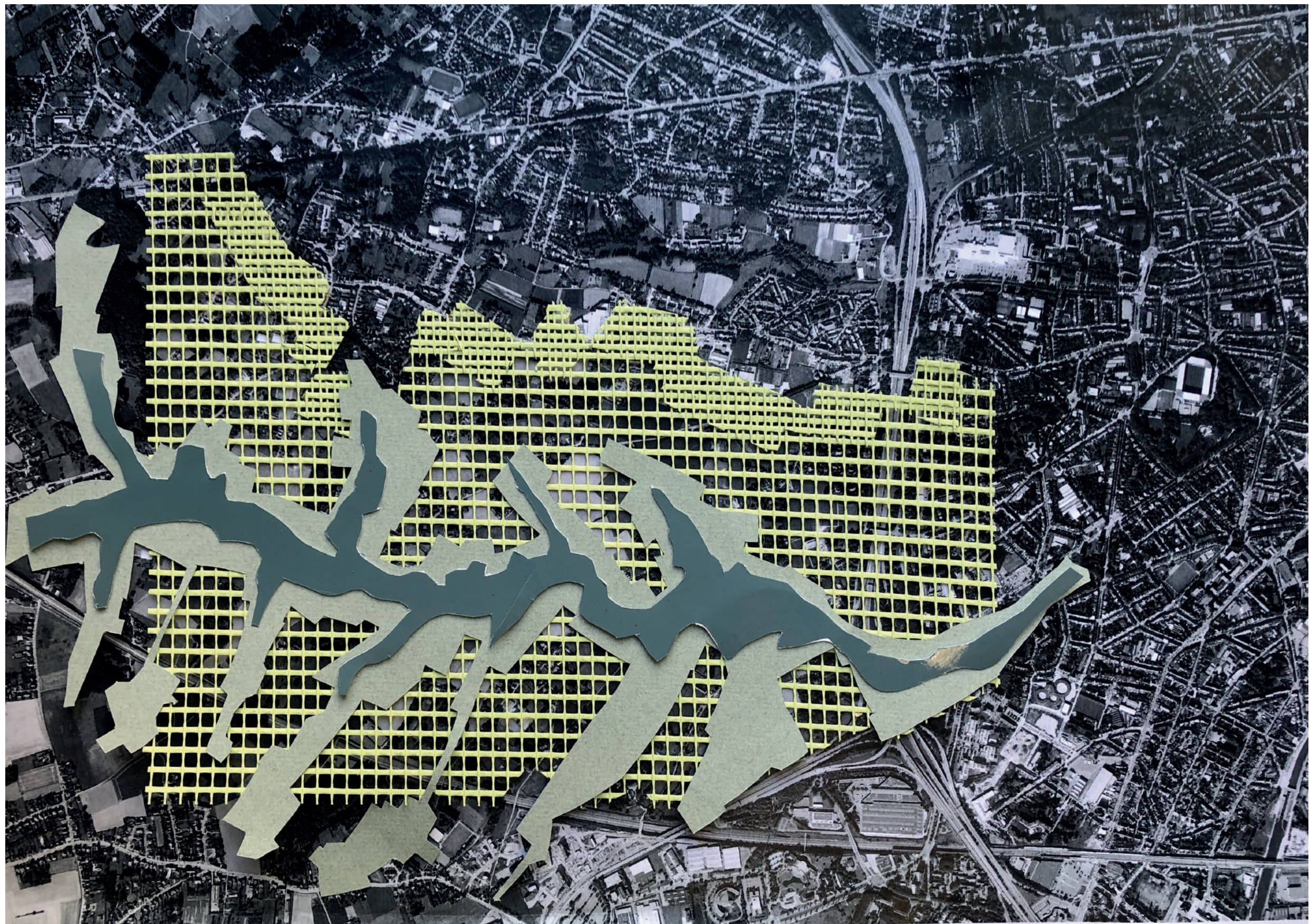
Two opposiste systems that need to face each other



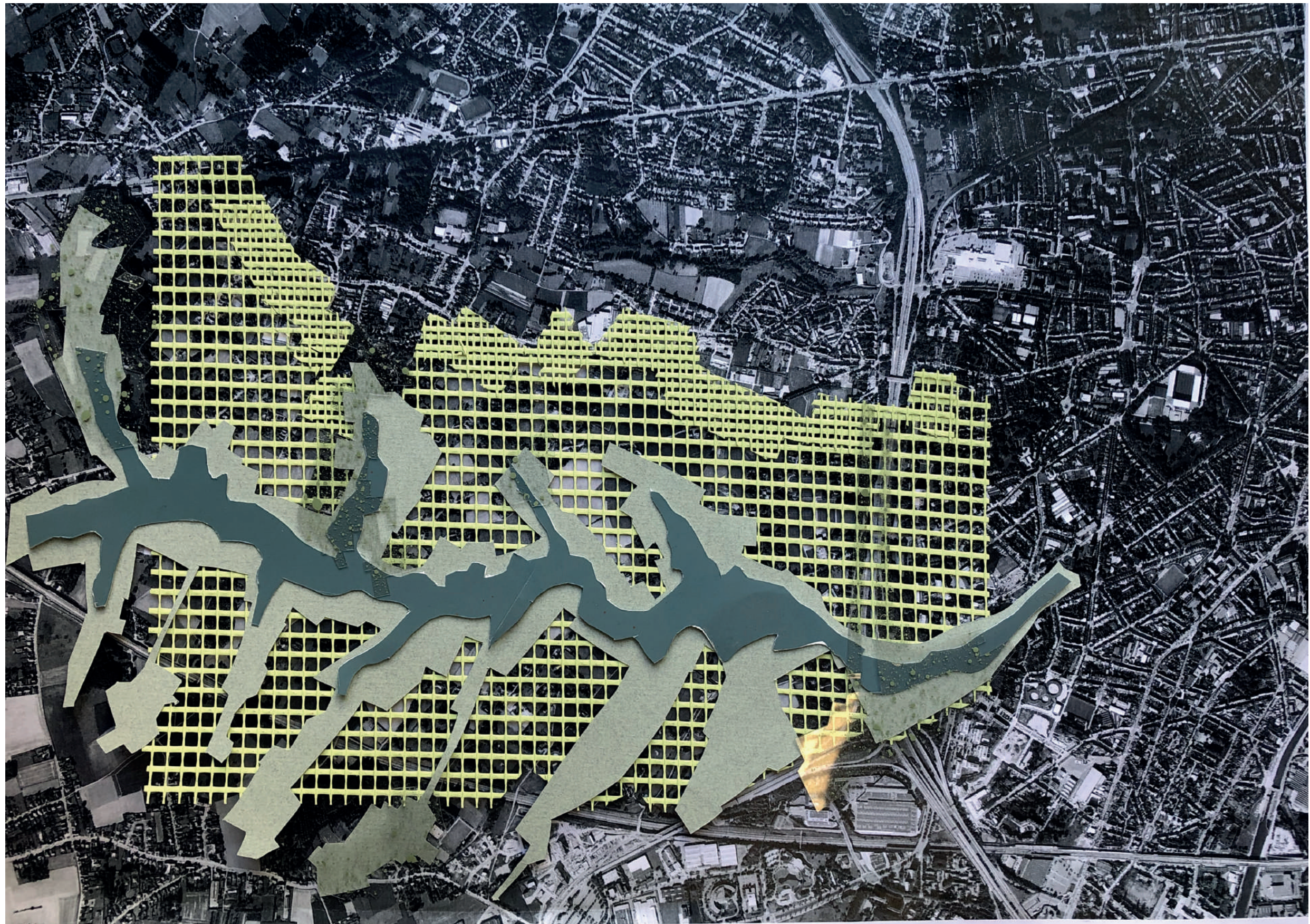
The riverbed of the Pede extend his banks



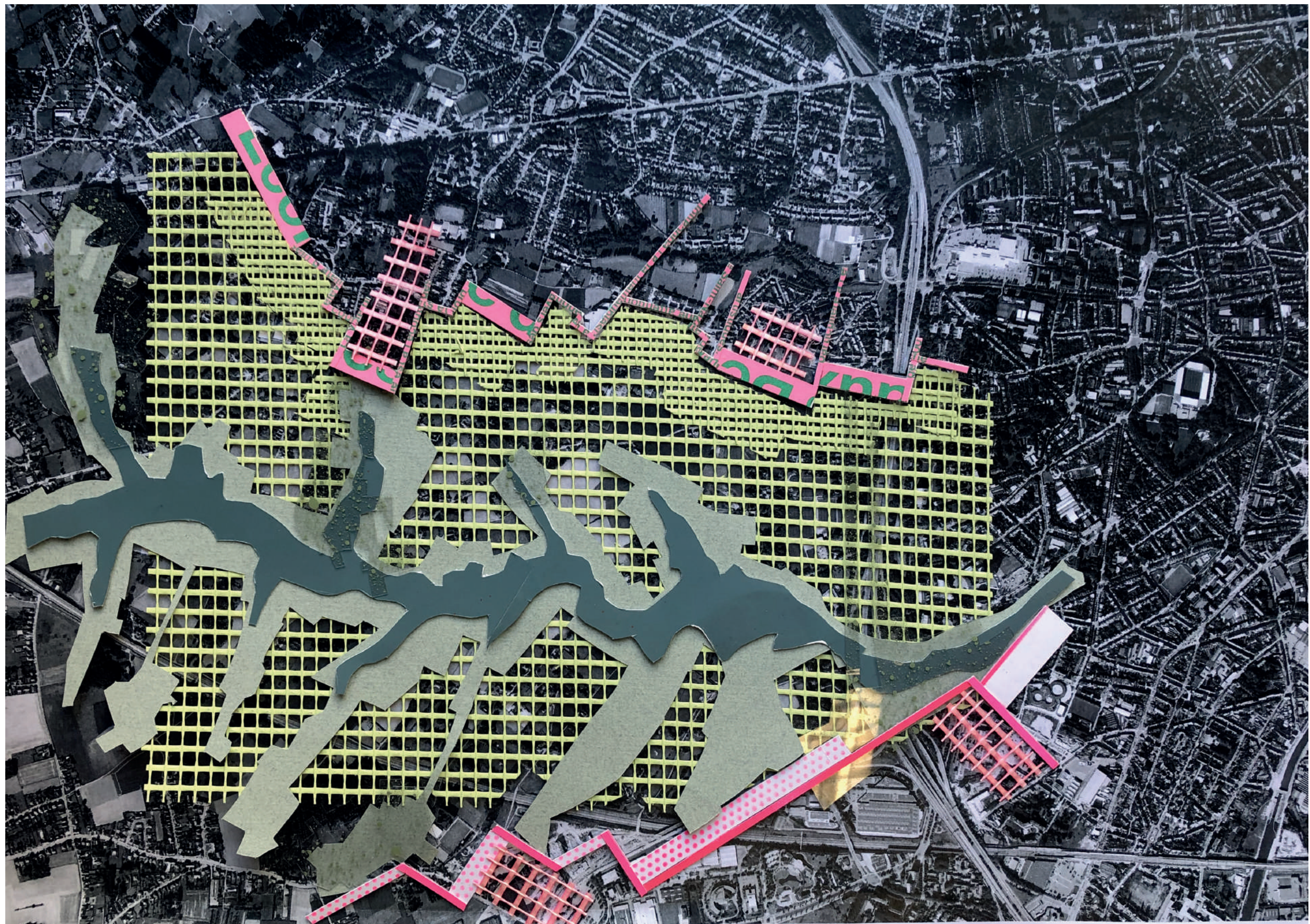
The riverbed of the Pede extend his banks



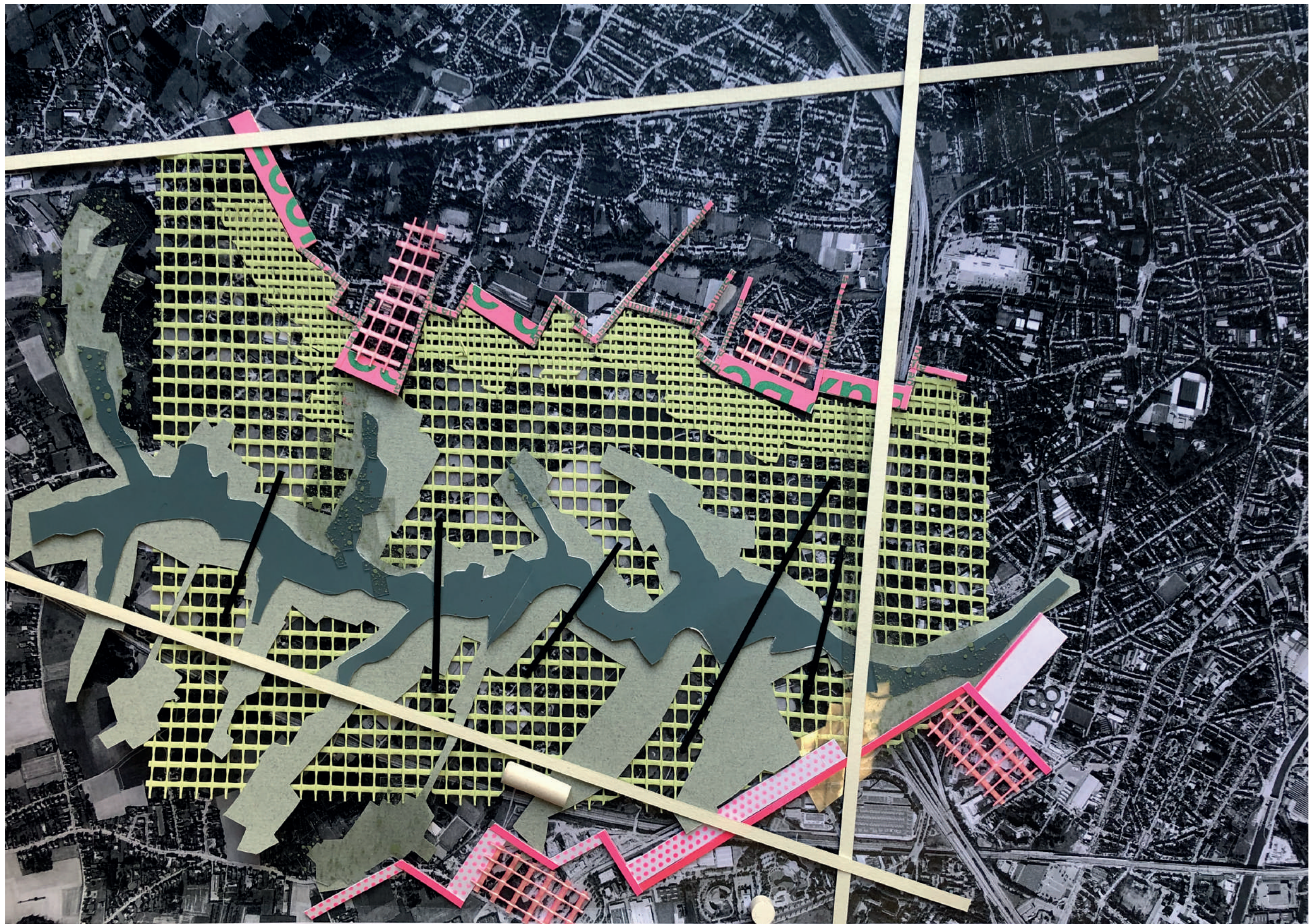
Cultivated fields are climbing on the slops



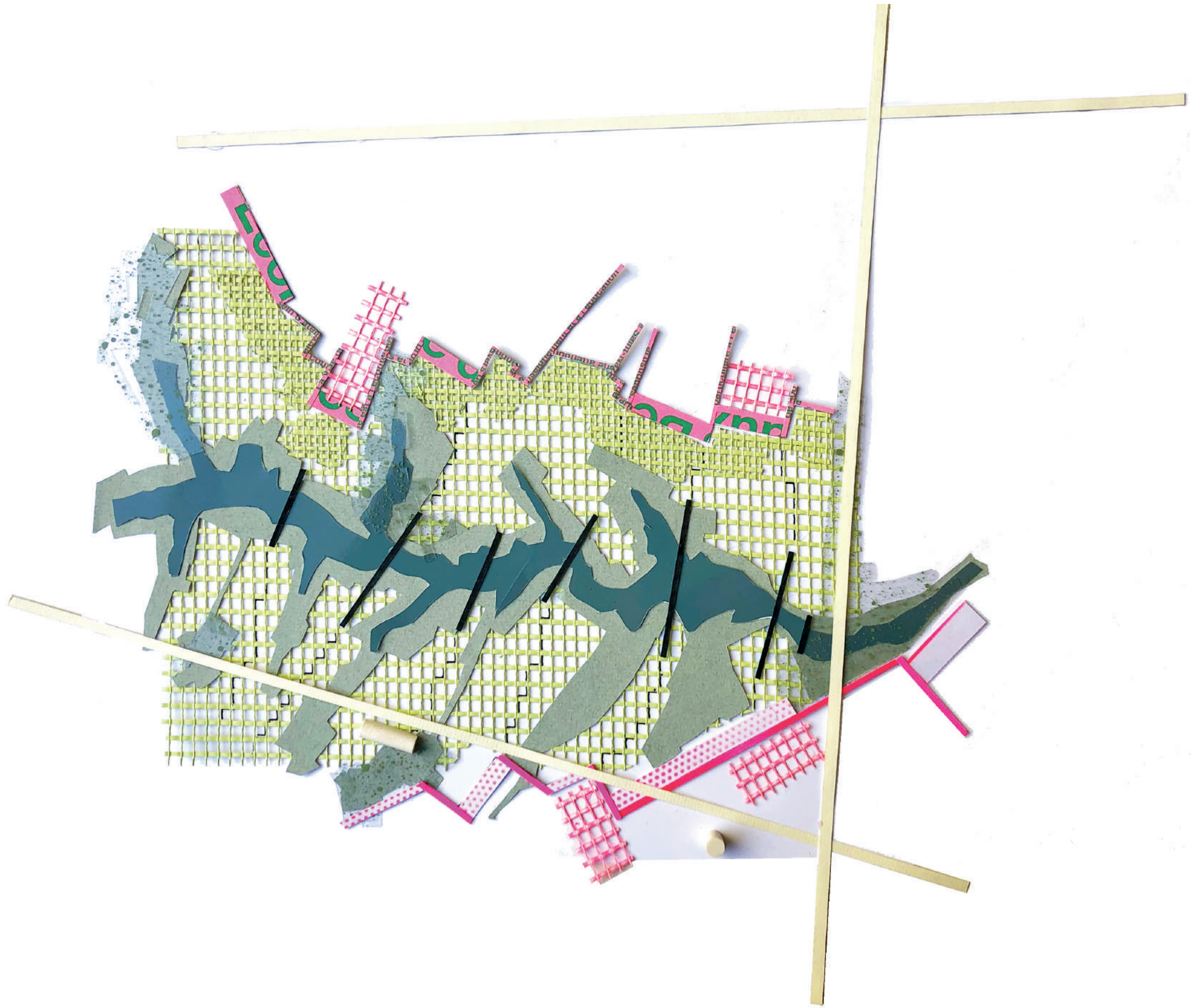
The riverbed of the Pede extend his banks



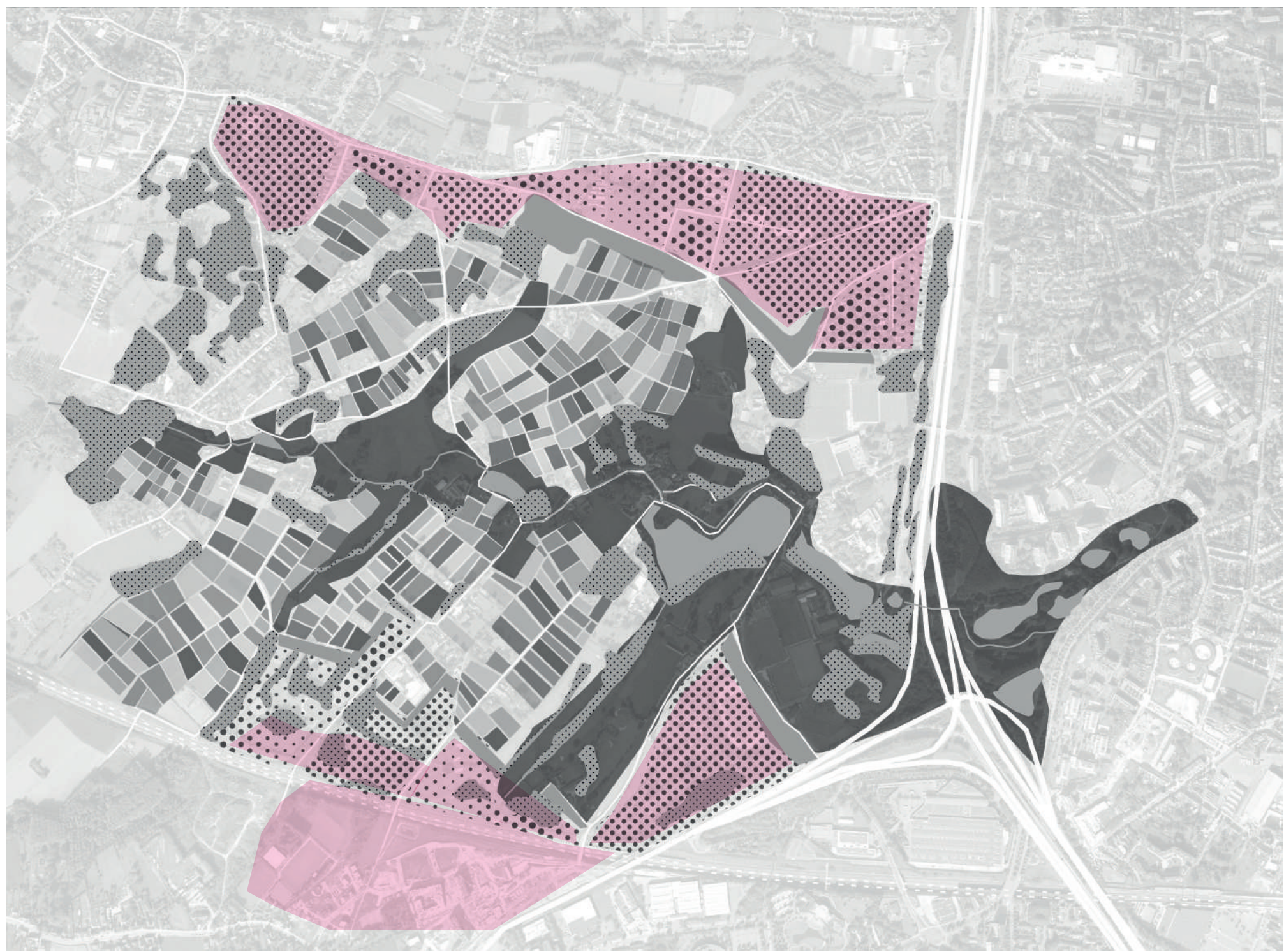
The city stops at the break of slops



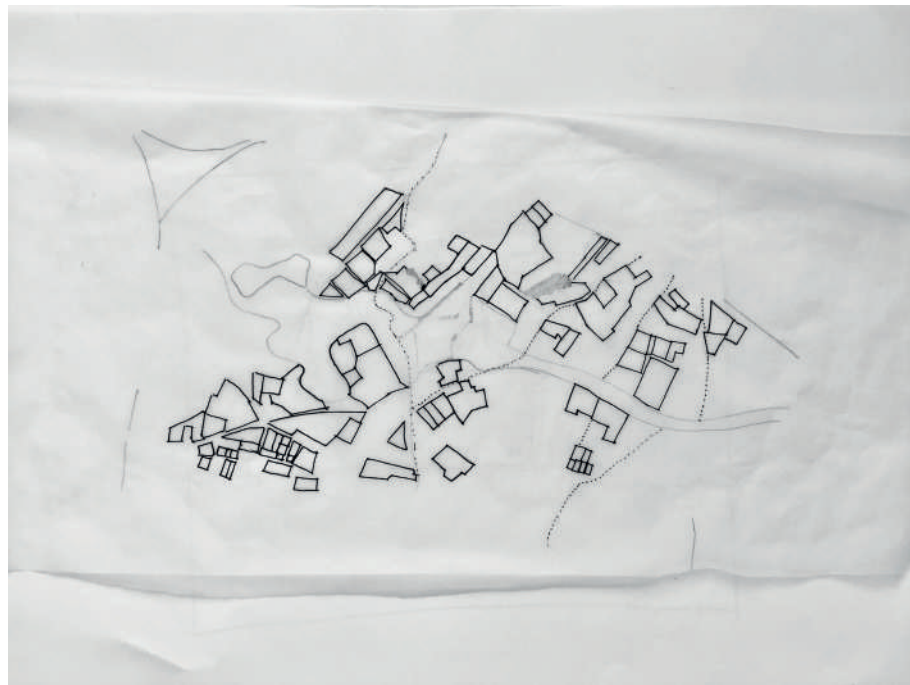
Paths are creating throw the Neerepede, linking the spikes



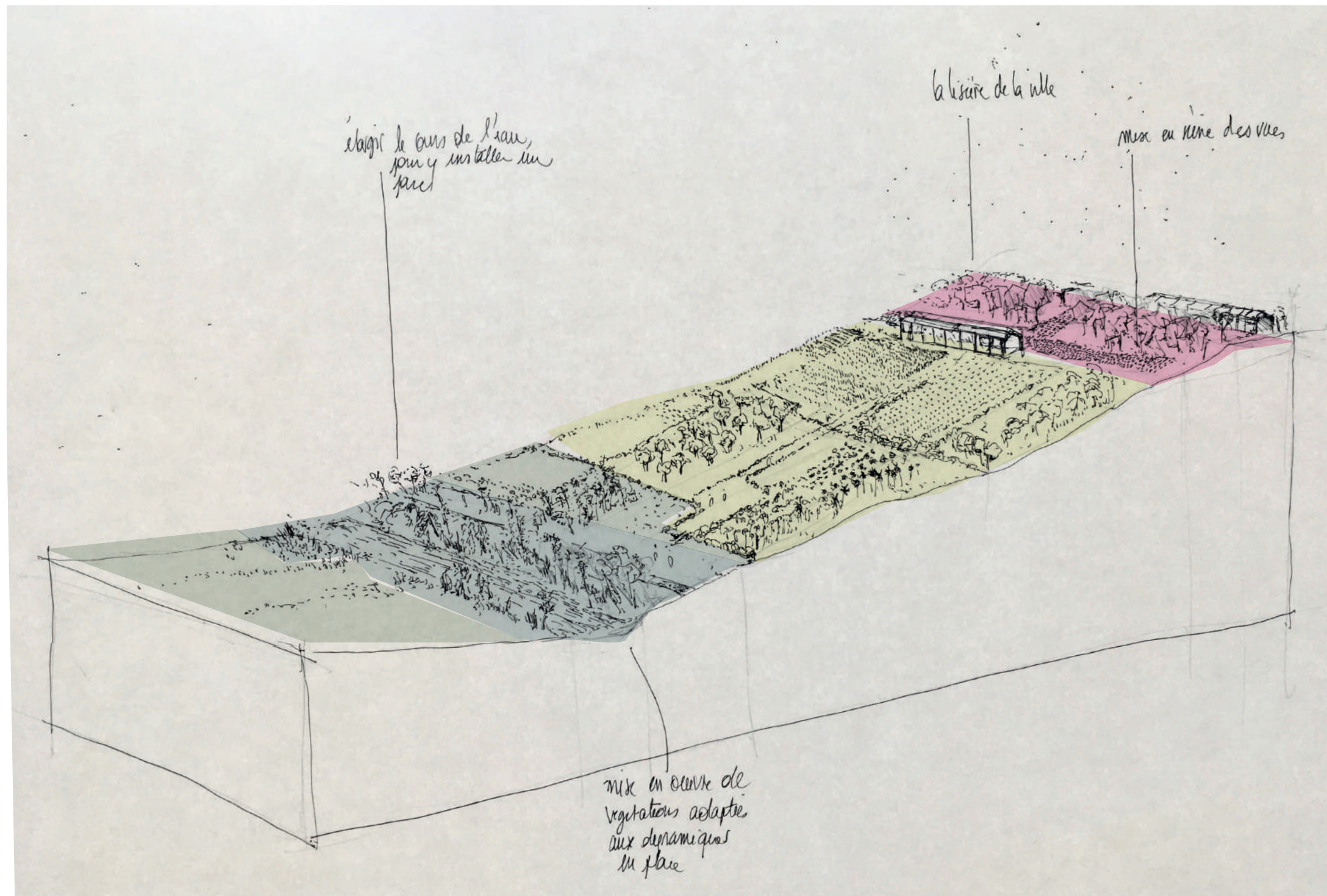
The geographical lines draw the limits of the city



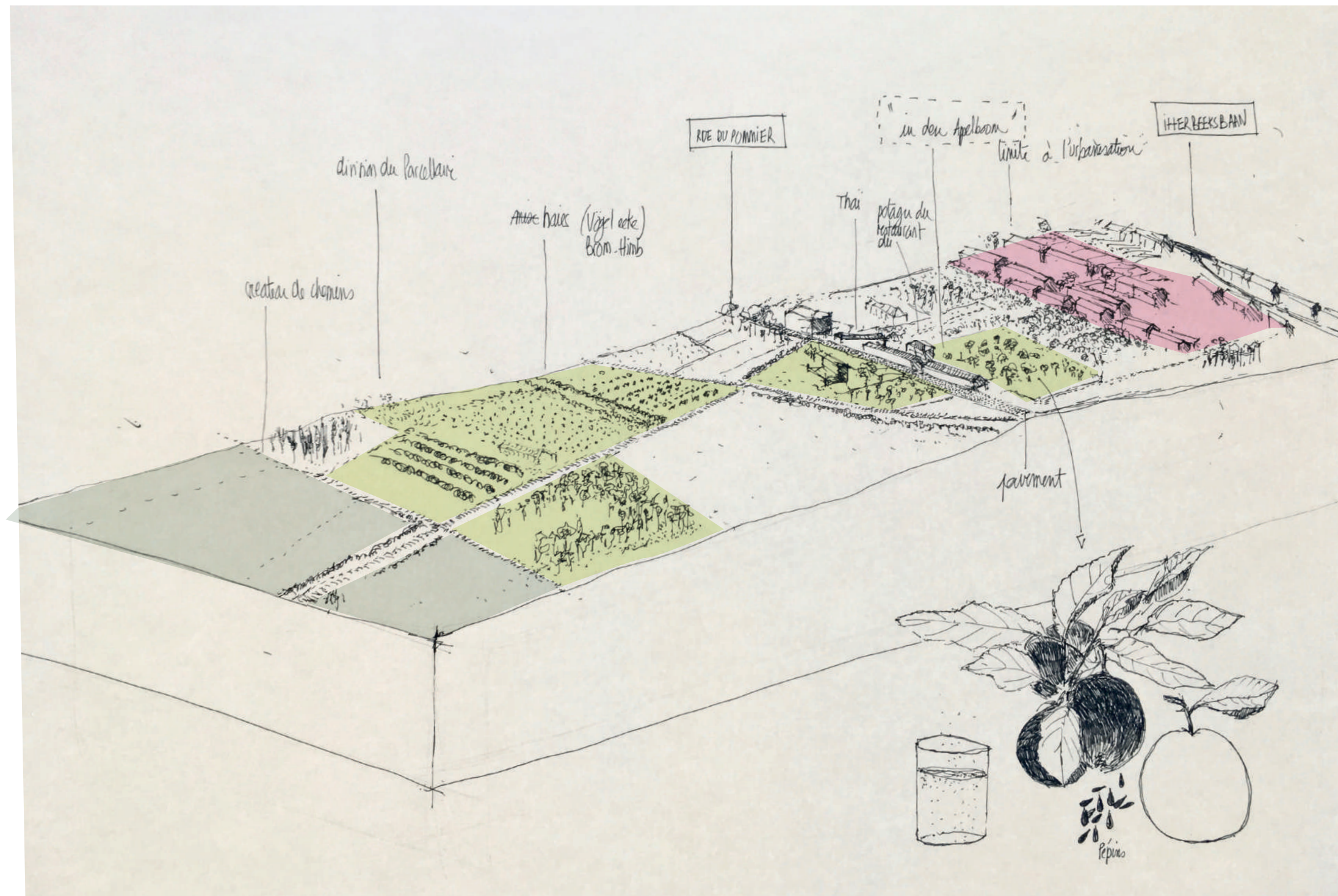
A proposition for the Neerepede



Considerate what are already there to draw a new plot system that respect the landscape.



Geographical forces influence the qualities of the drawing.



Ideas adapted to a specific site : In der Appelboom, rue du Pommier, Andelrecht



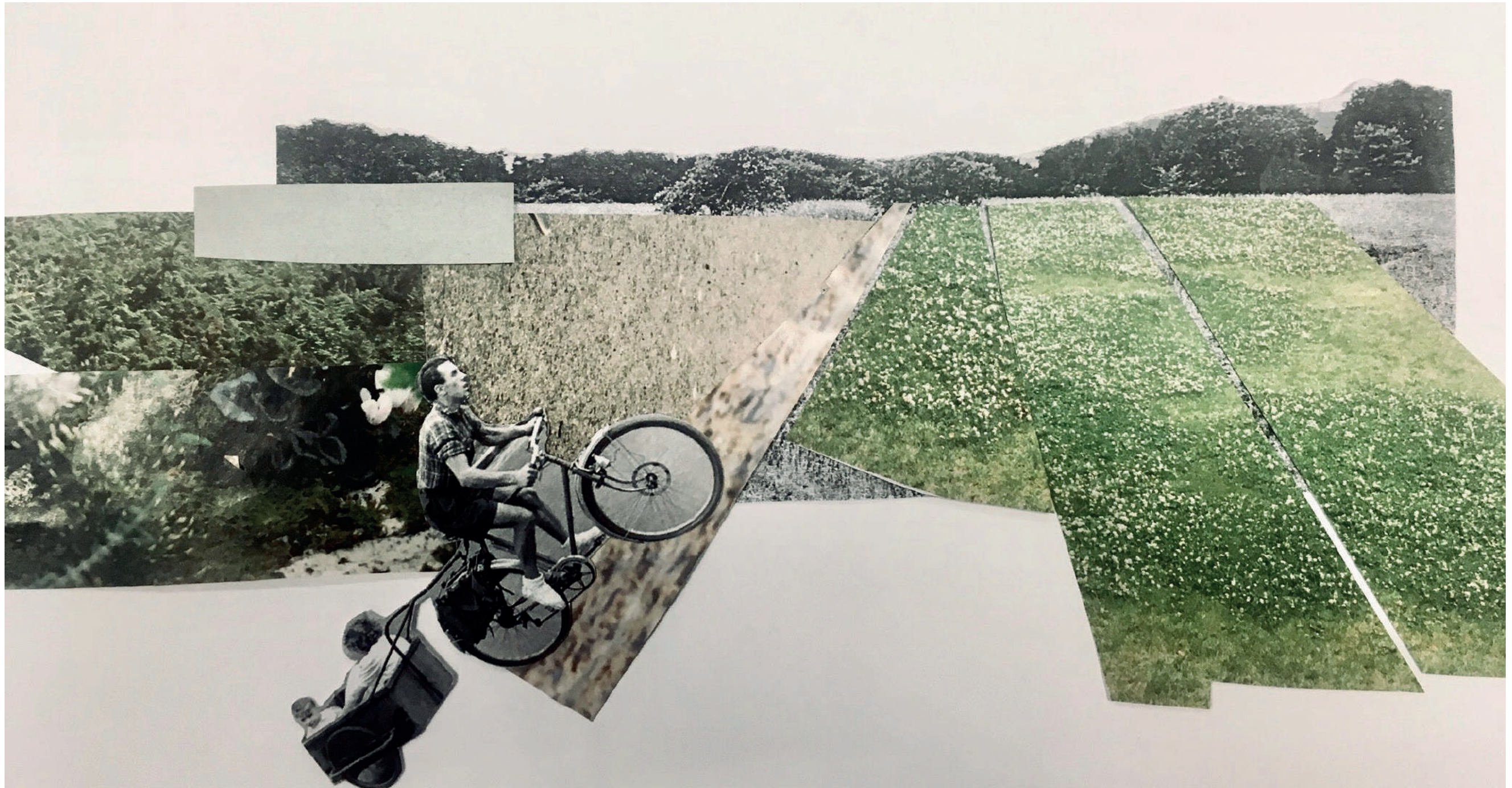
Designing the landscape throw specifics strata of plants and shapes



Saturday afternoon on the banks of the Pede



Monday morning, almost autumn



To the top of the hill, for lunch



The glass house broadcasts ' Babylon Berlin ' tonight.



The scale has changed but the views are still opened



The city underlines the colours of the spring

