

E16 LIVING CITIES

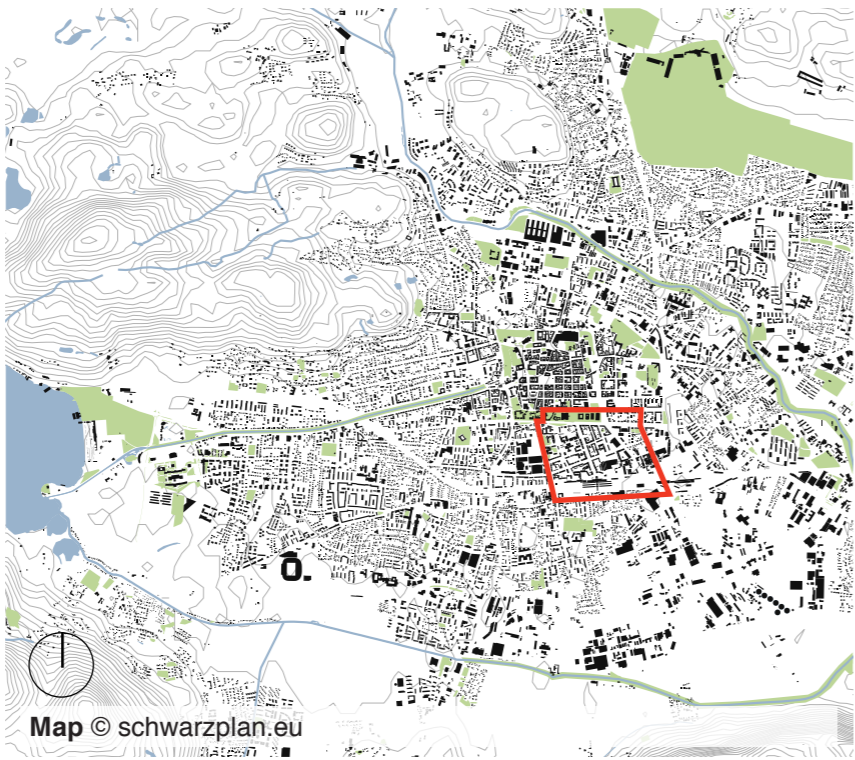
Klagenfurt

Austria

SCALE: L urban and architectural
TEAM REPRESENTATIVE: urbanist & architect

LOCATION: Klagenfurt, Austria
SITE TOPIC: Revitalisation - Transforming from Infrastructure
POPULATION: 101,403 inhabitants
STUDY SITE: 72.6ha
PROJECT SITE: 6.1ha
SITE PROPOSED BY: City of Klagenfurt
ACTORS INVOLVED: City of Klagenfurt, Stadtwerke Klagenfurt, KMBGmbH, Autowelt Sintschnig, Chamber of Commerce
OWNER(S) OF THE SITE: Stadtwerke Klagenfurt, KMBGmbH, Autowelt Sintschnig, Chamber of Commerce

AFTER COMPETITION: Urban development plan as base for further steps. Possible involvement in architectural implementations in succession.



Educating inclusivity

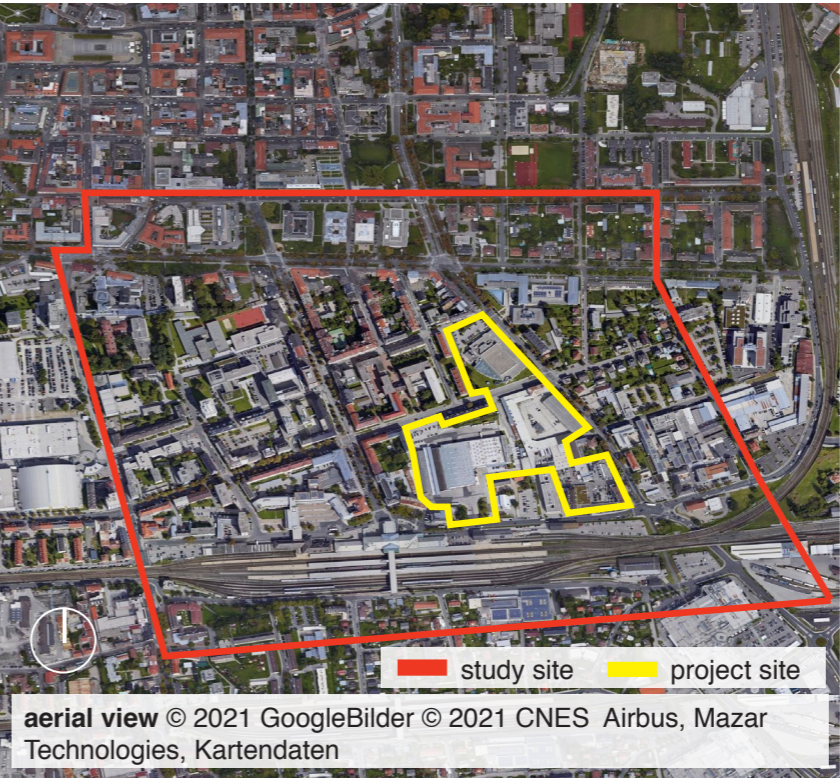


URBAN CITY STRATEGY

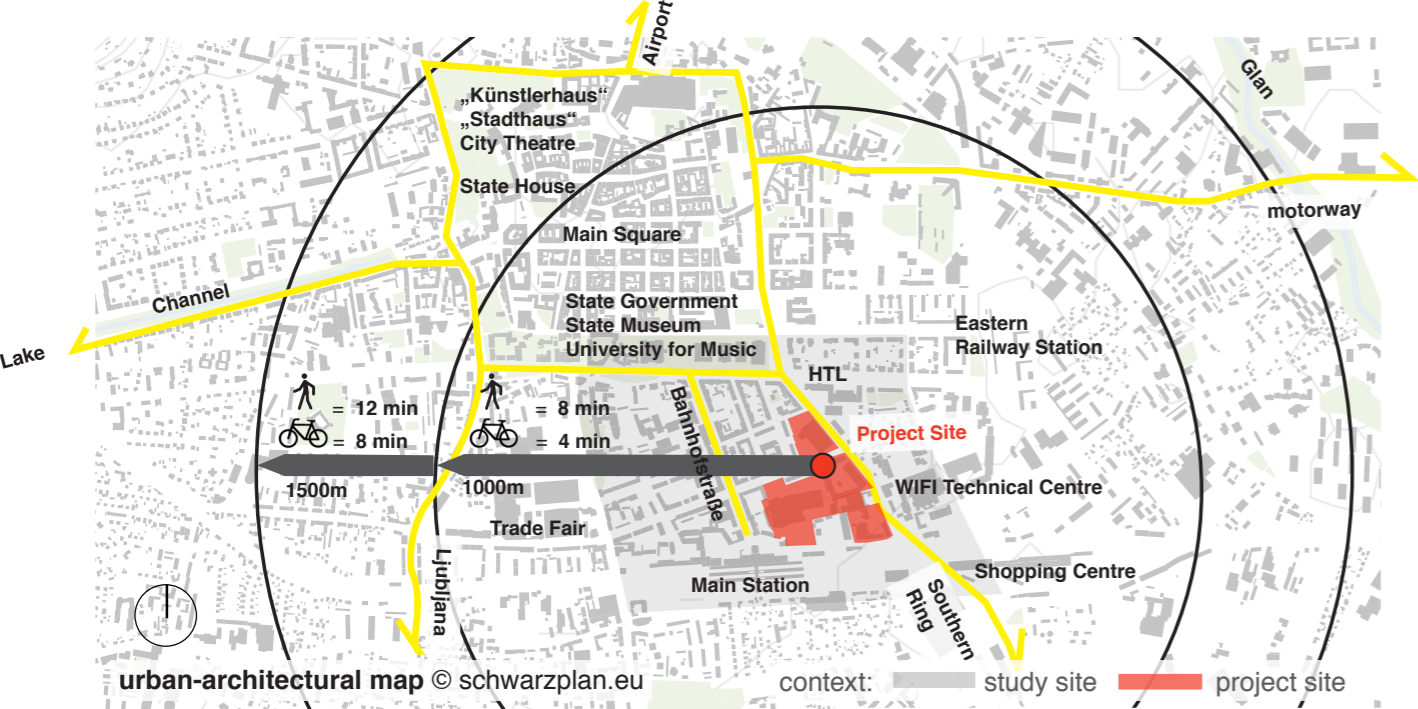
Klagenfurt is the southernmost regional capital of Austria, on the shores of a large lake. Paired with a continental climate – hot summers and cold winters – it is a popular destination for sports and tourism. For EUROPAN16 Klagenfurt offers its most important site in the city today. Within the next five years a new trans-European high-speed rail infrastructure will bring another dimension of connectivity to the city. A missing link along the expansive Baltic-Adriatic corridor will be closed and Klagenfurt will become one of the stops on this route. The E16 site is at the core of this prospect, located next to the main station. New possibilities will derive from this endeavour generating an urban transformation process in the greater area. The E16 site will be its first cornerstone with the potential to ground this unique opportunity. It will serve as a pilot project and will set the frame for a future development – expectations are high!

SITE PRESENTATION

The site is situated between the city centre and the railway station, both only a stone's throw away. One could say between the buzz of arrivals & departures and the buzz of a centre inviting to stay. Wedged between these particularities, the site can be interpreted as an interface that takes advantage of these dynamic places. Embedded in a context of educational institutions and administrative services, it is a prime location for a diverse mix of uses, serving this particular neighbourhood. Combined with a range of housing and making use of the nearby mobility hub, the ambition is to establish a well-connected, pedestrian-friendly, and open quarter.



E16 LIVING CITIES Klagenfurt, Austria



HOW IS METABOLISM AND INCLUSIVITY CONNECTED?

Accessible and just infrastructure is a key element to enhance exchange and join a network of broadening (personal & economic) choices. The new high-speed infrastructure serves as the trigger for this development, attracting different groups of people both from the town and from further afield. Thus, the site bears the potential of becoming a melting pot of ideas with open exchange being its driving force.

The social composition of the area will be vital. Culture and a maker space are anchored on site already. Numerous schools, (re-)training centres and semi-public institutions are located in the neighbourhood, bringing the topic of “new learning” and “new apprenticeship” to the table. How can learning become multi-dimensional thereby including all its audiences across professions & age and its related uses? What does a spatial expression operating in a synergetic mode for working, living, making, learning, exchanging, and enjoying look like? The quarter asks for typologies where all this can happen simultaneously, where generations and cultures can take care of each other, where spaces can be shared according to current needs and where mentors and mentees can interact.

With travel time reduced dramatically, Klagenfurt will be put on the map for people who value living in healthy surroundings with nature, education, and culture, and at the same time see the chance to have interesting work prospects close by. The site’s central location clearly prioritizes pedestrians and slow traffic and invites green strategies with as much open soil as possible. Paired with its commitment to openness and exchange the E16 site is setting the scene for a quarter inviting and accessible to all with parameters working towards a context of an inclusive manner.