

# European 16 Living Cities



Brief  
Selb





**Launch Day**

Monday, 5th of April 2021

**Organiser**

Europan – German Association for the  
Promotion of Architecture,  
Housing and Urban Planning in cooperation  
with the City of Selb

**Contact**

Europan Deutschland  
Vesta Nele Zareh, Lola Meyer  
Friedrichstraße 23A  
10969 Berlin  
Germany  
Telefon +49 30 399 185 49  
Fax +49 30 399 185 50  
Email mail@europan.de

Große Kreisstadt Selb  
Helmut Resch  
Head of the Urban Planning Office  
Stadtbauamt – Stadtumbaumanagement  
Ludwigstraße 6  
95100 Selb  
Phone: +49 92 87 883-157, -158  
E-Mail: bauamtsleitung@selb.de

**Site Representative**

Helmut Resch, Head of the  
Urban Planning Office

**Actors Involved**

City of Selb

**Team Representative**

Architect, landscape architect,  
traffic planner

**Communication**

Communication after the competition

**Jury – 1st Evaluation**

with the participation of the site representatives

**Jury – Prize Selection**

Ranked selection: with Winner (12.000 Euro),  
Runner-up (6.000 Euro) and Special Mention  
(no reward). The jury is autonomous in its  
decision.

**Post Competition Intermediate Procedure**

The procedure for the passage from the  
competition to the realisation will be speci-  
fied after the result.

**Mission Hiven to the Selected Team(s) for  
the Implementation**

Urban studies in cooperation with the city  
of Selb

### Schedule

#### 2021

April 5	Official launch of the European 16 Competition
May 7	German launching event
May 12	Site visit and colloquium
June 18	Closing date for further requests on the sites
July 2	Responding to requests on the sites
Sept. 17	Registration deadline
Sept. 17	Submission of entries
Oct. 22	Preliminary selection by the local jury
November	Forum of cities and juries
Nov. 26	Final selection by the national jury
Dec. 20	International publication of results
Dec./Jan.	German award ceremony

#### 2022

Feb. till June	Time frame for workshops
November	Inter-Sessions-Forum European 16/17

### National Jury

#### Client Representatives

- Dr. Timo Munzinger, German Association of Cities and Towns
- Prof. Dr. Iris Reuther, Senate Building Director of the Free Hanseatic City of Bremen
- Karin Sandeck, Board European Germany, Bavarian State Ministry of Housing, Building and Transport, Munich

#### Architects / Planners

- Stéphanie Bru, BRUTER
- Julia Dahlhaus, DMSW
- Prof. Dr. Agnes Förster, Chair for Planning Theory and Urban Development, RWTH Aachen
- Kyung-Ae Kim, Kim Nalleweg Architekten
- Anna Popelka, PPAG architects

#### Public Figure

- Kaye Geipel, Vice President European Germany, deputy editor-in-chief BAUWELT

#### Substitutes

- Dr. Saskia Hebert, Vice President European Germany, subsolar\* architektur & stadtforschung
- Prof Dr. Thorsten Erl, Board European Germany, metris architects and urban planners, professor for Urban Planning Siegen/Heidelberg

The local juries will be presented on the European website in due time.

## Table of Contents

### Part 1 General Conditions

	General Information	1
	Schedule	2
1	Acceptance of the Rules of European 16	6
2	Organiser	6
3	Type of Competition	6
4	Admission Zone	7
5	Entry Conditions	7
6	Registration	8
7	Information Available to Teams	8
8	FAQ	10
9	Submission of Entries	10
10	Results and Prizes	12
11	Communication of the Competition	13
12	Rights and Obligations	13
13	List of European 16 Competitions	14
14	Inter-Sessions Forum	14
15	Organization of the Juries	14
16	Juries	14
17	Implementations	16

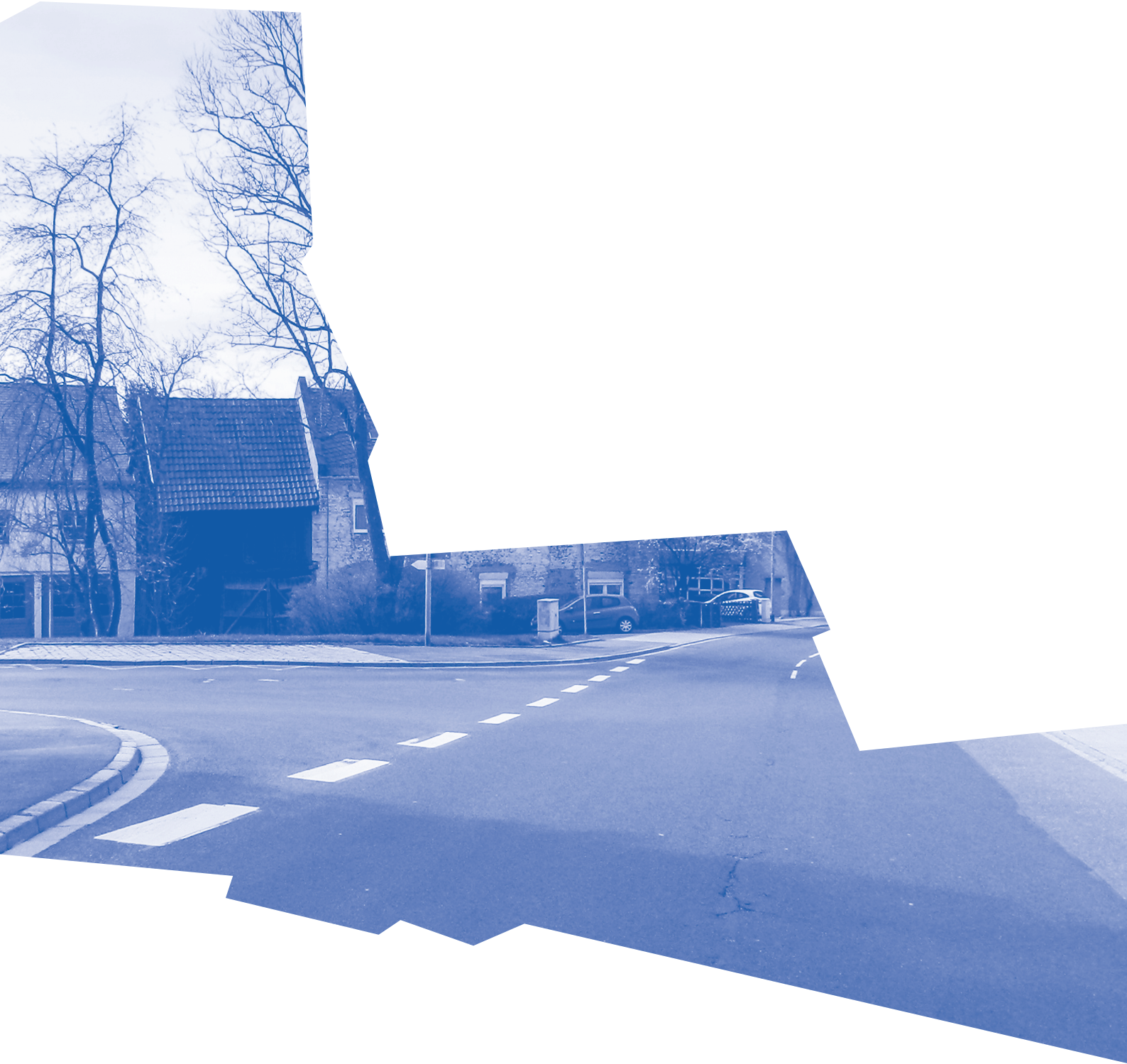
### Part 2 Competition Task

1	Occasion and Objective	20
2	Selb in the Regional Context	20
2.1	Historical Development	20
2.2	Economic and Cultural Significance	23
2.2.1	The Ludwigspassage	23
2.2.2	The House of the Childminders	23
2.2.3	The House of Youth	23
2.3	Population Development	24
3	Competition Area	24
3.1	Project Site	24
3.2	Study Site	27
4	Task Definition	27
5	Type of Commissioning	28
	Image Credits	34

# Part 1



# General Conditions





## 1 Acceptance of the Rules of European 16

The competition is implemented in conformity with the rules passed by the European European federation. The complete rules will be published under [www.european-europe.eu](http://www.european-europe.eu) on the European website.

The competition is held in accordance with the the Guidelines for Planning Competitions (RPW 2013) in the version published by the Federal Ministry for the Environment, Nature Conservation, Building and Nuclear Safety (BMUB) on 31.1.2013 (Federal Gazette of 22.2.2013).

The organisers, competitors and anyone associated with the competition recognise the content of this launching text as binding. At the same time the competitors recognise the basic requirements, demands and general conditions of the European 16 competition.

## 2 Organiser

European, German Association for the Promotion of Architecture, Housing and Urban Planning in cooperation with the city of Selb.

### Type of Competition

#### 3.1 Object of Competition ...

The city of Selb has already participated in the European competition several times and subsequently realised its results. This time, an urban development concept is sought for the 7.4-hectare study site, which will then be used as the redevelopment goal for the area. The aim is to revitalise the competition site at the edge of the eastern city centre. This area is currently defined by housing, service industries, derelict land and various buildings in need of renovation. A mix of uses including work, housing and services is sought for the

area. The small-town character of the city should be taken into account while the involvement of existing stakeholders is sought and newcomers are lured by attractive new offerings. It is an expressed desire to link the site with the inner city and the adjacent open spaces and rivers.

The competition entry should primarily develop solutions for the underused or derelict areas and buildings by way of innovative concepts for mixed living and working (a detailed task description can be found in 'Part 2: Competition Task'). The city anticipates competition entries for sustainable, innovative and intergenerational housing concepts. In addition to multigenerational living with an emphasis on communal use, co-working spaces should also be considered. Also desirable are spaces for small businesses that produce and sell locally, as well as for socially oriented enterprises. Part of the task is also the consideration and redesign of the open spaces in the area – especially street spaces – and particularly how they relate to sustainable, contemporary mobility. This creates the opportunity to develop new and, above all, modified typologies of open spaces that are designed for sustainable, flexible use and the diverse spectrum of (small-city) life.

In accordance with the European 16 theme of 'Living Cities – Lebendige Städte', design contributions are sought that demonstrate innovative ideas and processes while addressing the main themes of 'Dynamics of the Circular Economy' and 'Dynamics of Integration'.

#### 3.2 Procedure of Competition

The competition is designed as an open, one-stage call for ideas. It is anonymous.

## 4 Admission Zone

The competition is open to all the countries in Europe.

## 5 Entry Conditions

### 5.1 Entrants

European 16 is open to any team consisting of at least one graduated architect, who may be in association with one or more professionals of the same or related disciplines within the architectural, urban and landscape field (such as architects, urban planners, landscape architects, engineers, artists) or from other relevant fields (such as sociology, geography, biology) and may further be associated with one or more students with a bachelor degree or equivalent (3 years of study) in architecture or related disciplines. The team may also have one or more contributors, who are not considered authors of the project. Every team member must be under the age of 40 years old on the closing date for submission of projects.

### 5.2 Composition of the Teams

There is no limit to the number of participants per team. Multidisciplinary teams are strongly recommended with regards to the sites issues.

A registered team can modify its composition on the European website until the closing date for submissions (17 September 2021). No further change shall be accepted after this date.

Each team member (associate and contributor) shall be registered as such on the European website before the closing date for submissions.

One team can submit a project on different

sites in different countries with participation limited to one site in the same country and one person can be part of different teams provided that the projects are not submitted in the same country.

### Associates

Associates are considered to be authors of the project and are credited as such in all national and European publications and exhibitions. Architects must have graduated with a degree from a university specified within the EU Directive 2005/36/EC, or with an equivalent degree from a university within the natural borders of Europe, recognized by the professional architects' organizations in the country of the competition site. Other professionals must have an applicable European university degree, regardless of nationality. The compulsory requirement is to hold such a degree.

Membership in a European professional body is optional, except for associates without a European degree.

Students accepted as associates must have a bachelor degree or equivalent (3 years of study) in architecture or related disciplines from a university as mentioned above.

### Contributors

Teams may include additional members, called contributors. Contributors may be qualified or not but none of them shall be considered as an author of the project. Just like the associates, the contributors must be under the age of 40 years old on the closing date for submission of entries.

### Team Representative

Each team names one Team Representative among the associates. The Team Representative is the sole contact with the national and European secretariats during the whole competition. Furthermore, every communication shall be done with one email address,

which shall remain the same during the whole competition.

The Team Representative must be an architect or must have the architect status under the laws of a European country.

In specific cases and when mentioned on the site definition (see Synthetic Site File), the Team Representative can be an architecture, urban or landscape professional (architect, landscaper, urban planner, architect-engineer). In this case the team shall necessarily include at least one architect among the associates.

### 5.3 Non-Eligibility

No competition organizer and/or member of their families are eligible to take part in the competition on a site where he/ she is involved. Still, he/she can participate on another site in which he/she is not involved.

Are considered as organizers: members of the European structures and their employees; employees and contractors working for partners with sites proposed in the current session, members of technical committees, jury members and their employees.

## 6 Registration

Registration is done through the European website ([www.europan-europe.eu](http://www.europan-europe.eu)) and implies the acceptance of the competition rules.

In compliance with French Act #78-17 of Jan. 6th, 1978, on Information Technology, Data Files and Civil Liberties the protection of personal data communicated during registration is guaranteed. With the General Data Protection Regulation (GDPR) introduced in May, 25th, 2018, you hold the right to access and modify the information regarding your participation, as well as the right to limit,

transfer personal files and eliminate your personal data.

### 6.1 European 16 Website

The European website for the fifteenth session of the competition is available, from the opening date of the competition, at the following url: [www.europan-europe.eu](http://www.europan-europe.eu)

It includes: the complete European rules for the European 16 competition; the session theme; the synthetic and complete site files grouped geographically or by themes; the juries' compositions; and an organisational chart of all the European structures.

The registration of the teams and the complete digital sending of the projects must be done via the European website.

### 6.2 Team Registration

Registration to the competition is done through the European website (Registration section) and implies the payment of a 100 Euro fee. There shall be no refund of the registration fee.

This fee includes one Complete Site Folder and the printing of the panels on a rigid support by the national secretariats.

Payment is automatically confirmed on the website. The team can then access its personal area and download the Complete Site Folder for the selected site and the digital entry area.

Additional Complete Site Folders cost 50 Euro per site.

## 7 Information Available to Teams

### 7.1 Synthetic Site File (Available for Free)

The Synthetic Site Files present a summary vision of the site. They are available for free

on the site presentation pages of the European website and help the teams to have a global view of the sites. This document is in English (and sometimes also in the site language).

The Synthetic Site Files provide: Good-quality iconographic documents: 1 map of the city or conurbation identifying the location of the study site and giving the graphic scale; 1 aerial picture of the study site in its context identifying the location of the study site in red and the project site in yellow; 1 oblique aerial picture (semi-aerial) of the study site; 1 oblique aerial picture (semi-aerial) of the project site; 1 map of the area identifying the study site and the graphic scale; 1 map of the area identifying the project site and the graphic scale; at least 3 to 6 ground-level pictures showing the site's characteristic elements (topography, natural features, existing architecture);

Written information: the site scale – location – category; the profile of the team representative: architect or professional of the urban design; names of the town and place; population of the town and conurbation; surface area of the study and project sites; site representative, actor(s) involved, site owner(s); expected follow-up after the competition; the developer's and the city's specific objectives; strategic issues of the site; relation the session topic: "Living Cities"

## 7.2 Brief (Available for Free)

The Brief is a 20-to-25-pages illustrated document aiming at providing a better understanding of the main elements of the context through the existing elements as well as through the site's mutation issues and its environment. It is available for free on the site presentation pages of the European website in order to help the teams select their project sites. It includes the following elements: A summary of the main elements of the site;

the site specificities – site representative; other actors involved; profile of the team representative; expected skills among the team members; communication of the submissions; follow-up after competition; A detailed analysis of the regional and urban context, putting in perspective the transformations of the city and the region and including all the elements on this scale that may have a current of future influence on the site: mobility networks, ecological elements, urban structure, landscape, etc., within the general framework of the theme „Living Cities“; A detailed analysis of the study site putting the transformation of the site (the site and its environment) in perspective and illustrating how the session topic is taken into account.

The following information is also provided: Role of the study site in the city policy, with details on the goals of the planning imagined by the municipality; Programmatic framework: planned transportation networks; public and private spaces to build and/or upgrade, with assumptions about planned functions and/or dimensions; goals for public spaces and infrastructures; and detailed explanations of the choices of the developers for each aspect of the programmes. A detailed analysis of the project site putting in perspective the site transformation and the way to make it again „liveable“. The programmatic framework is also detailed, with: the spaces to build and/or regenerate, with functions and dimensions; the precise goals for public spaces and infrastructures; detailed explanations of the developers' intentions on the parts of the programmes to be included. The main elements linked to the european 16 topic and their implication on uses and flexibility of spaces (built and public), natural elements and implementation processes of the mutation. A description of the sociocultural context of the site, the city and the region and its evolution to help participants better understand the local

urban lifestyles and the citizens' rhythms. A description of the economical context of the site, the city and the region and its evolution to help participants better understand the potential „Living Cities“ to create. This document is in English (and sometimes also in the site language).

### 7.3 Complete Site Folder

(Download available upon registration.)

The Complete Site Folders include detailed visual documents on the city, the site, its context as well as plans, pictures and any graphic document required for the design process. They can be downloaded on the site presentation pages (after registration on the site and logging in to the website) and help the teams design their project on the chosen site. They include plans, pictures, diagrams and graphics of the following scales:

#### A. Territorial Scale – Conurbation

1 aerial picture of the city; 1 map on regional (urban geography) or urban scale (conurbation) with an appropriate graphic scale showing the major features structuring the area (buildings, networks, natural features).

#### B. Urban Scale – Study Site

1 aerial picture; at least 1 semi-aerial picture; at least 5 ground-level pictures showing the characteristic features of the study site: topography, natural features, existing architecture, etc.; plans with an appropriate scale; characteristic features: infrastructure, existing and future plans, etc.

#### C. Local Scale – Project Site

at least 3 semi-aerial pictures; at least 10 ground-level pictures showing the characteristic features of the project site: topography, natural features, existing architecture, etc.; plan(s) with an appropriate scale, showing:

the project site's location within the study site and the plot divisions, constructions, natural elements, etc.; topographical map of the project site with an appropriate scale and, if necessary, characteristic features (buildings and natural features to be retained or not, etc.)

## 8 FAQ

### 8.1 Questions on the Sites

A meeting is organised on each site with the teams and the municipalities and/or developers to give a detailed picture of the issues related to the site. The national structure of the site then publishes a report in English in a maximum of two weeks after the meeting. This report is available online on the site presentation pages of the European website. In addition to this an FAQ section on sites is open on the European website for a limited period of time (see calendar). Only registered teams can submit questions.

### 8.2 Questions on the Rules

An FAQ section on rules is open on the European website for a limited period of time (see calendar).

## 9 Submission of Entries

### 9.1 Digital Submission

Digital submission is compulsory. It includes the 3 A1 panels (visual elements), 4 pages (max) illustrated text explaining the link between the project and the theme of the ongoing session as well as the implementation and building processes of the project, documents proving the eligibility of the team members and documents for the communication of the project.



The complete submissions shall be submitted before midnight (UTC+2) on September 17th, 2021, on the European website (Entry section). Failure to comply with the hereunder-mentioned requirements may, eventually, if the jury decides it, result in the disqualification of the team. The number of entries per site is available on the European website on the European map of the sites (column on the right).

## 9.2 Anonymity and Compulsory Content

The site name and the project title must be displayed on every document: panels, illustrated text and communication documents. A specific code is automatically attributed to each project upon upload. The teams do not know this code, through which the jury members take note of the project. When anonymity is lifted, the teams' identities are revealed via an automatic link between the code and the team on the online projects database.

## 9.3 Language

The panels shall be either written in English or bilingual (English + the site language).

## 9.4 Items to Submit

Submissions include documents divided as follows: 3 vertical A1 project panels composed of visual elements of the project; 1 text presenting the ideas of the project (6 pages max.); Documents proving the eligibility of the team members; Documents for communication (3 images + a text of 800 signs, spaces included)

### 9.4.1 Panels Vertical A1 Format

Content: The 3 panels must: explain the urban ideas developed in the project with regards to the site issues and the thematic orientations of the session; develop the

project as a whole, highlighting the architecture of the project, and particularly the relationship between the new developments and the site's existing context, including three-dimensional representations of the project; develop the method foreseen for the implementation process of the project.

All graphic and descriptive documents must have a graphic scale.

### Technical Specifications:

PDF format; Vertical A1 (W 594 mm × H 841 mm) Maximum 20 MB; One box (W 60 mm × H 40 mm) is left blank in the upper left corner for the automatic insertion of the code; the name of the city appears next to it

Panels numbered from 1 to 3 in the upper right corner; the team is free to decide on the positioning of the proposal title

### 9.4.2 Text

Content: This text must present the ideas of the project and its links with the theme of the session but also the process and periods of implementation.

Technical specifications: 3 to 4 pages (maximum) with limited visuals; PDF format; Vertical A4 (W 210mm × H 297mm).

Documents to prove the eligibility of the team members Documents for the disclosure of names and verification of the validity of the proposals shall be uploaded as PDF's on the European website.

Personal information includes:

### A. For the Team:

The team form and the declaration of author- and partnership, and of acceptance of the competition rules available online on the team's personal area; to be filled out and signed;

**B. For Each Associate:**

A copy of an ID document with a picture, providing evidence that they are under the age of 40 at the closing date for submission of entries (see calendar.)

A copy of their European degree as an architectural, urban or landscape professional (architect, landscaper, urban planner, or others...) or proof of such a status under the law of a European country.

**C. For Each Contributor:**

A copy of an ID document with a picture, providing evidence that they are under the age of 40 at the closing date for submission of entries (see calendar.)

No other document than the ones above-listed is necessary.

Attention: The personal documents must be uploaded individually for each team member. Only team members that correctly registered and submitted their eligibility documents separately shall be considered within the team final composition.

The upload of one sole document with all the required information (copies of the ID's and degrees) will not be accepted.

**9.4.3 Documents for Communication**

Each project must be summered up as follows: One short text of 800 signs (spaces included, to be typed in during submission) developing the project ideas; 3 separate JPG images that symbolize the project (max. 1Mb per image).

**9.4.4 Communication Video**

Winners and Runners-up of the E16 session will make a communication video presenting their proposal and will be sent, after the announcement of the results on Monday,

December 20th, 2021, to the European Secretariat before January 16th, 2022.

- length: 3 minutes (maximum);
- Format : MP4 video with the codec H.264;
- Language for the voice and/or texts: English;
- Content: the main ideas of the project linked to the theme of the session and the possible implementation process.

**9.5 Control of the Submissions**

Each team can check the upload of their projects on their online personal area on the European website. They can also – if needed – modify these documents until the deadline for submissions.

A period of 6 days is left open after the deadline for submissions (see Calendar) for the European secretariat to control the upload of each submission sent before the expiry of the deadline, as well as to correct the potential problems that might have appeared during the upload of the documents.

**10 Results and Prizes****10.1 Results**

All the results for European 16 (winners, runners-up, special mentions) are available online from December 20th, 2021, on the European website (Results section).

**10.2 Winners' Prize**

The authors of the Winner projects receive a reward of the equivalent of 12,000 Euro (all taxes included) in the currency of the site's country (at the exchange rate on the date of the announcement of the results). The organizers undertake to abide by the decisions of the national juries and to pay the

reward within 90 days of the announcement of the results.

### **10.3 Runners-Up's Prize**

The authors of the Runners-up projects receive a reward of the equivalent of 6,000 Euro (all taxes included) in the currency of site's country (at the exchange rate on the date of the announcement of the results). The organizers undertake to abide by the decisions of the national juries and to pay the reward within 90 days of the announcement of the results.

### **10.4 Special Mentions**

A Special Mention can be awarded to a project considered innovative although not completely adapted to the site. The authors of such proposals do not receive a reward.

## **11 Communication of the Competition**

### **11.1 Events**

#### **At the National Scale of the Organizing and Associate Countries**

Promotion is organized around the competition launch. After the first jury round, an exhibition or online publication of all the submissions on one site can be organised, provided that it respects the teams' anonymity and it is correctly communicated beforehand. This communication shall be specified in the site brief.

The results announcement is accompanied with results ceremonies and presentations and/or workshops creating a first contact between the winning teams and the site representatives.

#### **At the European Scale**

A European event called Inter-Sessions Forum is the link between a finishing session and the

beginning of the new one. This forum gathers the winning teams and site representatives of the finishing session and the site representatives of the new one. Working-groups are organized around the results and first implementation steps of the projects awarded during the last session.

A 500 Euro compensation is granted by the National Secretaries to each winning team (winners and runner-up) participating to the Forum to cover the journey and accommodation expenses.

### **11.2 Publications**

The competition results can be the opportunity for publications in every organizing or associate country.

The European secretariat publishes a catalogue with the European results along with expert analyses. This catalogue is available either for free consultation or for sale on the European website. One exemplar is given for free to each winning teams (winner, runner-up, special mention).

### **11.3 Websites**

Websites are open by the national and European structures to promote the current session, future events and archives (previous sessions, team portraits, etc.). At the European level, the European website allows participants to find information on all the sites, to register to the competition, to submit their projects and to know all the results of the current session on the European level.

## **12 Rights and Obligations**

### **12.1 Ownership**

All material submitted to the organizers becomes their property, including reproduc-

tion rights. The intellectual property rights remain the exclusive property of their author(s).

## 12.2 Exhibition and Publication Rights

### Moratorium on Publication

Teams may not publish the documents submitted to the competition or disclose their names by using their project for any communication before the official announcement of the results. Any such publication may result in the disqualification of the team.

### Publications

The organisers reserve the right to publish all the projects submitted to them after the official announcement of results. Projects are exhibited or published under the names of their authors.

## 12.3 Disputes

The Council of the European European Association, which is empowered to arbitrate, shall hear any dispute. In the event of jurisdiction, this will take place in the respective country.

## 13 List of European 16 Competitions

The Contact section of the European website shows the detailed national competition conditions country by country (number of sites and prizes, conditions and rules for implementation, etc.) as well as the composition of the National and European structures, (with names of the people involved).

The Jury section of the European website lists the members of the national juries.

## 14 Inter-Sessions Forum

Before the launch of the competition, the Inter-Sessions Forum represents the link between a finishing session and the beginning of the new one. This forum gathers the

winning teams and site representatives of the finishing session and the site representatives of the new one.

This Forum, for European 15/16, took place as an online forum from January 18th to 22nd, 2021. The next Inter-Sessions Forum – presenting the European 16 results and the sites proposed for European 17 – is scheduled for November 2022.

## 15 Organization of the Juries

### 15.1 Technical Commissions

Each country sets up a Technical Commission, which does not judge but examines all the projects submitted in the country to prepare the work for the jury. Its members are appointed by the national structures and the list of members is communicated to the European European Association. This committee may include city representatives and national experts.

## 16 Juries

### 16.1 Composition

Each country sets up a jury, whose members are appointed by the national structure and approved by the European European Association.

The jury considers all the projects that comply with the competition rules and is sovereign in its judgement. In the event of non-compliance with the rules, it has discretion whether or not to disqualify the entrant.

According to the country, the jury consists of 7 (or 9) members, that are independent and are not linked to a site proposed to the competition and is constituted as follows:

2 representatives of the urban order (public or private) – or 3 in case of a 9-member jury;

4 representatives of the architectural and urban design (architects, landscapers, urban planners) – or 5 in case of a 9-member jury –, among which at least 2 architects;

1 public figure.

At least 2 out of the 7 members must be foreigners – at least 3 in the case of a 9-member jury. The national structure also appoints at least 2 substitute jury members, representatives of the architectural and urban design. The jury members are identified when the competition is launched and their names are listed for each country on the Jurys section of the European website.

Jury members may consult city and site representatives, but on no account may the latter have voting rights for the final selection of winners, runners-up and special mentions.

## **16.2 Working Methods and Evaluation Criteria**

The jury's decisions are final in compliance with European rules. Before beginning to work, the jury receives recommendations from the European Association.

The jury meets in 2 separate sessions at different periods of the competition:

### **Local Jurys**

At the beginning of this session, the jury appoints one of its members as chairman and agrees on its working method. Sites representatives can be integrated to this jury level and, in some countries, may participate to the selection of the shortlisted projects. The jury then studies the projects that do not comply with the rules and decide whether or not to disqualify them.

Later on, it assesses the projects on their conceptual content and the degree of innovation according to the European 16 topic and shortlists 20% maximum of the submitted projects.

### **National Jury**

During the second round, the jury examines – on its own and independently – the shortlisted projects and points out the winners, runners-up and special mentions. The jury could assess the projects on basis of:

- the relationship between concept and site;
- the relevance to the questions raised by the topic and in particular to the issues of sustainable development and adaptability;
- the relevance of their programme to the general brief for their specific site;
- the potential for integration into an urban process adapted to the site's issue;
- the innovative nature of the proposed public spaces;
- the consideration given to the connection between different functions;
- the architectural and technical qualities

The jury finally writes a report giving the reasons for the choice made in relation to the requirements of the competition and the concerned sites.

Each country budget includes the equivalent of a Winner's and a Runner-Up's prize per site. Still, each entry is judged on its sole merits and the winning teams are not chosen on basis of an equal distribution between sites – the jury can therefore distribute prizes among entries up to its will or decide not to award all the prizes. In this case, the reasons shall be made public. The jury may single out projects for Special Mention. These projects are recognised by the jury as presenting innovative ideas or insights, yet not sufficiently suitable for the site. The authors of such projects do not receive any reward.



The jury can decide to replace a prize-winning project, if disqualified after the validation of competition participation, by another project if the quality is satisfactory.

### **16.3 Disclosure of Names**

The projects assessed by the experts and juries are anonymous.

Once the decision of results is taken, the jury reveals the names of the winners, runners-up and special mentions. This operation is done through the European database, which automatically links the codes of the projects and composition of teams.

### **16.4 Results Announcement**

After disclosure of the names of the winning teams and following any adjustments to rankings that may prove necessary, the national secretariats ratify the decisions and disclose the names of all the participants. The European secretariat publishes the complete list of results online on December 20th, 2021.

## **16.5 European Comparative Analysis**

### **16.5.1 European Comparative Analysis Committee**

Between the two jury meetings the members of the European Scientific Committee meet to familiarize with the anonymous projects shortlisted by the different national juries. They compare the projects and classify them by theme on basis of the problems raised by the site categories and the proposed ideas. Under no circumstances does the European comparative analysis committee express a judgement – it simply proceeds to a classification of the projects. Its role is purely thematic and comparative.

### **16.5.2 Forum of Cities and Juries**

Between the two national jury sessions a Forum gathers the national juries and site representatives to discuss the conclusions of the European comparative analysis committee. It aims at ensuring that the different experts participating in the evaluation process share a common culture. Projects remain anonymous throughout the procedures and are only identified by their code.

## **17 Implementations**

### **17.1 Activities to Promote Implementations**

The European Association and the national structures undertake to do what is required to encourage cities and/or developers (or their nominated promoters.) that have provided sites for the competition to engage the prize-winning teams for the operational phase.

The national structures undertake to organize a first meeting with the prize-winning teams within 90 days after the official announcement of results, between the partners of the cities and the clients. This meeting may take various forms and is the starting point for the site representatives to initiate implementation processes with the prize-winning teams on the ideas developed in the projects.

In some countries – and provided this step falls under public market regulations – a maximum of 3 winning teams can be involved in a study and/or workshop organised in partnership with the European national structure and the site's representatives, after which the latter – the city or another public official – chooses the team(s) for implementation. This new consultation work is paid.

The operational follow-up consists of a series of stages: preliminary studies, workshops, urban studies, operational studies, construc-

tion and within a contractual agreement. If necessary, they may be implemented on another site than the competition site as long as the ideas of the prize-winning projects are maintained. The prize-winning teams must comply with the professional rules that apply in the country where they are engaged to work. After the competition, the prize-winning teams must appoint one of their architect members as a representative, who is the sole spokesperson for the team with the municipalities and/or developers. A summary of the countries' legislations on the rules of professional practice is available in the Contact section of the European website (Complete Card).

## **17.2 Websites**

The European national structures present the implementations at the national level. The European secretariat presents completed or ongoing implementation processes on the European website (Exploration section).

## **17.3 Implementation Books and Booklets**

The European secretariat coordinates European publications on implementations, showing winning and runner-up projects from previous sessions that were implemented or are still in progress.

# Part 2



# Competition Task



## 1 Occasion and Objective

The town of Selb, with a population of around 15,000 (as of 30 September 2020), is located in the administrative district of Upper Franconia in Bavaria. Due to demographic and industrial structural changes in the local economy – hitherto traditionally dominated by the porcelain industry, which has largely ceased production – the town has been shrinking continuously. Since the end of the 1970s, it has lost about a quarter of its inhabitants. In recent years, however, a reversal of this trend has been achieved through changes in the offerings of the business community and active urban planning interventions, some of them based on results of previous European competitions.

The causes of change are not just economic or demographic; shifts in urban structure are noticeable too. Like the entire region, Selb suffers from a lack of attractive and customizable living space, especially in rental housing. In addition, only very limited space in the town centre is potentially available, e.g. for new apartment buildings.

To counteract these problems, the aim is to revitalize, upgrade, and strengthen the town's inner districts, including the competition area on the eastern edge of the town centre (fig. 2). Revitalizing this area should contribute to revitalizing the town centre. The competition area has not seen further development in recent decades, and so it is characterized by wasteland and properties in need of redevelopment – hence, conversely, these areas represent potential to be exploited. Future planning for the area aims to achieve a mix of employment, housing, and service uses, taking into account the small-town character of the town of Selb. This will involve existing owners, but will also provide attractive offers to newcomers. Interconnecting the area with the town centre is an explicit aspiration.

## 2 Selb in the Regional Context

The town of Selb lies in Upper Franconia on the northern edge of the Fichtel Mountains near the border with the Czech Republic (Fig.1). Its topography is varied, with elevations varying between 500 and 690 metres above sea level. Selb is about 25 kilometres from Hof and is directly linked to the A93 Regensburg-Hof motorway, one of Europe's most important north-south transport axes.

### 2.1 Historical Development

At its first documented mention, in 1281, Selb was a market town whose inhabitants lived mainly from agriculture and forestry. The town's name probably goes back to the Selwe dynasty. Together with the neighbouring town of Asch, Selb was pledged to the bailiffs of Plauen, and thus belonged to the Egerland. At the beginning of the fourteenth century, the Forster dynasty rose to prominence, but they later sold their lands to the Burgraves of Nuremberg, so that Selb – like the rest of the Sechsamterland – became part of Germany. In 1810 Napoleon ceded the principality of Bayreuth, which he had annexed four years earlier, to the Kingdom of Bavaria. Selb thus became Bavarian and, while its ties to the Egerland and Vogtland have survived to the present day, the town is intimately linked to Franconian Bavaria.

In 1856 the medieval town centre was completely destroyed by fire, as were almost all the town's commercial enterprises. After it, Lorenz Hutschenreuther founded the first porcelain factory in Selb, giving the town a new economic future, and the porcelain industry dominated its economic structure until the early 1990s. At the height of the porcelain industry, when the Hutschenreuther, Rosenthal, and Heinrich companies were producing almost half of Germany's porcelain products, Selb was dubbed the 'City of Porcelain'. The town's first significant expan-



Fig. 1

Town of Selb  
in its regional  
context



Fig. 2

Selb town centre



Fig. 3, Fig. 4



Fig. 5, Fig. 6



Fig. 3  
The former NKD  
building before  
demolition

Fig. 5  
Implementation  
of the first two  
construction  
phases

Fig. 4  
Demolition of  
the NKD building

Fig. 6  
The House of the  
Childminders



sions occurred in the nineteenth and twentieth centuries, still hard by the historic old town. Subsequent residential and commercial areas were built at ever-increasing distances from the town centre and mostly without a direct connection to each other.

## 2.2 Economic and Cultural Significance

In the wake of industrial structural change, Selb's economic structure today consists of several diverse sectors. Over time, the town, which has a current population of 15,000, has developed into an industrial location where other types of industry have established themselves, in addition to ceramics – for example, mechanical and plant engineering, the automotive supply industry, and plastics processing, among others. Nevertheless, porcelain has made its mark on Selb; the so-called 'white gold' is a definite part of the townscape – for example, in the form of a porcelain fountain, fine street paving, a carillon, and even a mural depicting the town's history.

Selb has a wide range of sports and leisure facilities, which include the indoor swimming pool in Rosenthal Park, the idyllically situated 'Langer Teich' forest swimming pool, numerous tennis courts, riding and sports halls, and the Hutschenreuther ice rink (one of the most beautiful in Germany). Additional cultural offerings are the Rosenthal Theatre and the municipal cinema, which is currently undergoing renovation.

In the early twenty-first century, the town of Selb projects itself as an industrial location favoured by important leading companies and an attractive place to live in the rural surroundings. Nestling in the Fichtelgebirge Mountains, it can offer both attractive jobs and a wide range of recreational opportunities. The town has already successfully participated in several European competitions. These have concerned, on the one hand, revitalizing the heart of the town centre and,

on the other, redeveloping the railway station area in connection with the reorganization of its spaces and functions. The competition results have already been announced or are currently being implemented.

### 2.2.1 The Ludwigspassage

In the European 13 competition, solutions were sought for the development of a pedestrian link in the form of a passage between the centre of Selb and the local shopping centre on Schillerstrasse. The winning proposal was convincing, with an innovative design that significantly helps to increase the amenity value. It will be implemented in several construction phases, with completion scheduled for 2021 (Fig. 3–5).

### 2.2.2 The House of the Childminders

The House of the Childminders is the result of the European 9 competition, the aim of which was to implement an urban development concept for upgrading the town centre. The winning design provided for individual buildings to be developed at various town-centre locations, representing the centre or starting point of the town-centre development process. The House of the Childminders was fitted into an existing vacant site (Fig. 6).

### 2.2.3 The House of Youth

In addition to the House of the Childminders project, the previous House of Youth at Karl-Marx-Strasse 6 was redesigned as part of the European 9 competition (Fig 7, 8). The aim once again was to significantly upgrade the town-centre area. Based on the convincing urban development concept of the competition, the winners were commissioned to build a new youth centre/youth hostel at this address. Today, the property serves as a successful youth club and family centre (meeting place).

## Open Space Planning Around the Selb-Stadt Railway Station

In the course of European 15, a feasible urban planning concept was to be evolved for redeveloping the area around the Selb-Stadt railway station. The winning design – by the architects Roderich Essmann, Robin Thomä, and Margarita Vollmer ('Scherben bringen Glück') – was further developed in several workshops into a feasible re-use concept. The project has been commissioned and will be implemented by 2023 (Fig. 9).

As these examples show, the town of Selb upholds the European competitions' promise to implement competition results along with the prize-winners, working in good cooperation with the local authorities.

### 2.3 Population Development

The town of Selb had around 6,000 inhabitants in the middle of the nineteenth century, and the figure peaked in the 1960s at over 24,000. However, structural change in the ceramics industry from 1980 onwards resulted in a drastic population decline, as employment in the industry fell from around 5,000 to 600 workers today. Selb's population loss between 1960 and 2015 can be put at 35 per cent; since 2015, however, there has been a slight increase in the number of inhabitants, which can be attributed to positive net migration. The population decline also caused a break in the town's development. The current unemployment rate of about 5 per cent is accompanied by an ageing population. The central urban planning and economic goal is therefore sustainable urban development, taking demographic and economic change into account.

## 3 Competition Area

The project site covers an area of 5.7 hectares. The study site is 7.4 hectares.

### 3.1 Project Site

The project site is in the western part of the town centre and consists largely of residential development with a few service enterprises. The area east of Bergstrasse has many properties in need of redevelopment or partially vacant. Obere Bergstrasse, which is particularly affected, also includes a former brewery that is currently underused and lying derelict. The ground floor of Obere Bergstrasse 10 is currently occupied by a restaurant, while the upper floor is vacant, and Nos. 8 and 12 are also vacant. Just north of No. 12 is the Luise Scheppeler House kindergarten. The southern and south-eastern areas of the project site contain mainly residential development around the Luitpold primary school.

The project site borders a new residential quarter (2016) to the west, while to its east is the Selb town cemetery. Further east is Lorenz-Hutschenreuther-Strasse, which is characterized by residential development (including some vacancies).

The competition entry must, above all, come up with solutions for the underused or derelict areas, in the form of innovative concepts for living and working. This would apply in particular to the property at Friedhofsplatz 1, including the car park beside the street, and also to Obere Bergstrasse Nos. 8, 10, and 12. As yet, the town of Selb owns solely the car park, although discussions about acquiring further properties are already under way. After acquisition, the town envisions demolishing these properties so as to put the area to new uses and make it more attractive. Proposals for this should be submitted in the competition.

Fig. 7

The House of  
Youth before  
remodelling



Fig. 8

Youth centre  
after completion





Fig.9  
Draft of the  
re-use concept

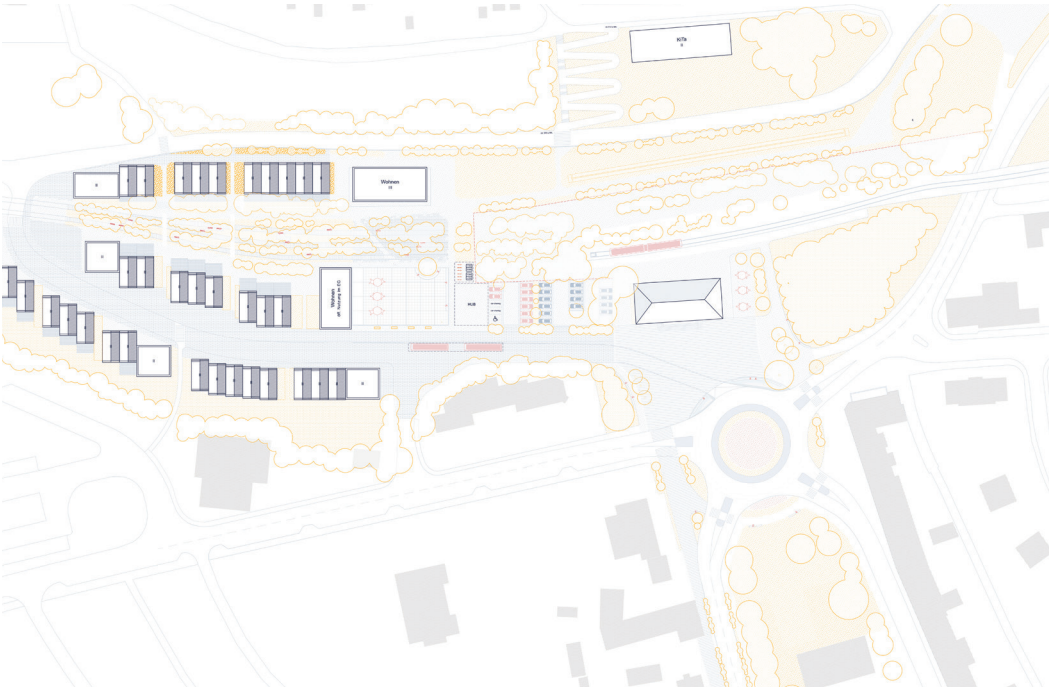


Fig.10  
Lorenz-  
Hutschenreuther-  
Straße 1





The northern entrance to the project site also involves properties in need of renovation and should be upgraded accordingly. This includes in particular the properties at Wittelsbacher Strasse 6 (already owned by the town) and at Von-der-Tann-Strasse 2. The owner of the latter would like to sell her building to the town, and talks are already under way. Once both properties have been demolished, this would provide Selb with an area for mixed housing construction.

The town expects competition entries for sustainable, innovative, and intergenerational housing concepts. In addition to multigenerational living with corresponding community facilities, these should also include co-working proposals. Also desirable would be premises for small businesses that produce and sell locally, and social offers, such as a day-care centre or a children's shop. Furthermore, facilities that particularly appeal to young people are desirable, e.g. a bicycle parking station with a workshop.

Small garden centres in courtyards that have their business premises on the street but also protect and use the green space would also be possible. Furthermore, the long street frontage should be broken up by, for instance, creating small squares that include a large tree as a meeting point. In addition, the street frontage should be sequenced; that is to say, in this project site dealing with modern-day mobility also means integrating the arrangement of street spaces in terms of design.

### 3.2 Study Site

The study site is an extension of the project site towards the eastern town centre. In its western part, in the middle of the old town and close to the Youth and Family Centre, a project to create an inner-town residential quarter for young families (IQ residential quarter) with a variety of play facilities was already implemented in 2016. Here, a total of

twenty-four flats were created in three buildings, accessed via a staircase atrium. In the process, pathways to the town centre were also developed. This sort of linkage with the town centre is important for the project site too. Accordingly, competition entries should also include proposals for similar links. To the northwest of the study site, there is a specialist retail centre for local produce, with a variety of shopping facilities. Competition entries should take this into account in terms of its access possibilities, including its integration into the area via improved access links. Adjacent to the study site to the east and south are various open spaces and rivers, which will need to be interconnected with the residential area. This must be taken into account and included in the competition entries.

## 4 Task Definition

The project site – especially the above-mentioned buildings in need of renovation and currently vacant and underused – should be given new functions. The focus needs to be on developing mixed housing concepts that are both innovative and sustainable, take account of accessibility, and are suitable for all generations. Moreover, these housing concepts should also help to strengthen the role of employment in the neighbourhood. In addition, the project site must be linked to the town centre in the best possible way by means of attractive connections. The small-town, non-metropolitan character must be respected in the competition entries. There is an opportunity here to develop new and, above all, innovative typologies of open space, designed for sustainable, flexible uses and diverse (small-town) life.

In accordance with the European 16 task formulation, 'Living Cities – Lebendige Städte', design contributions are sought that demonstrate innovative ideas and processes and tackle the main topics of the 'Dynamics

of the Circular Economy' and 'Dynamics of Integration'. In order to investigate the prevailing social, structural, and urban conditions of the project site, preparatory studies will be carried out in 2021. The proposed solutions that result from the competition will become part of the formal urban redevelopment goals for this area.

## **5 Type of Commissioning**

Depending on the quality of the competition results, an urban development design may be commissioned.

Fig. 11, Fig. 12



Fig. 13, Fig. 14



Fig. 15, Fig. 16



Fig. 11  
Crossing Län-  
genauer Straße  
and Lorenz-  
Hutschen-  
reuther-Straße

Fig. 12  
View from Birk-  
engasse at  
Krematorium-  
straße

Fig. 13  
Parking lot –  
Obere  
Bergstraße

Fig. 14  
Lorenz-Hutschen-  
reuther-Straße

Fig. 15  
Luitpold primary  
school

Fig. 16  
Crossing Sedan-  
straße – Hart-  
mannstraße –  
Von-der-Tann-  
Straße



Competition site





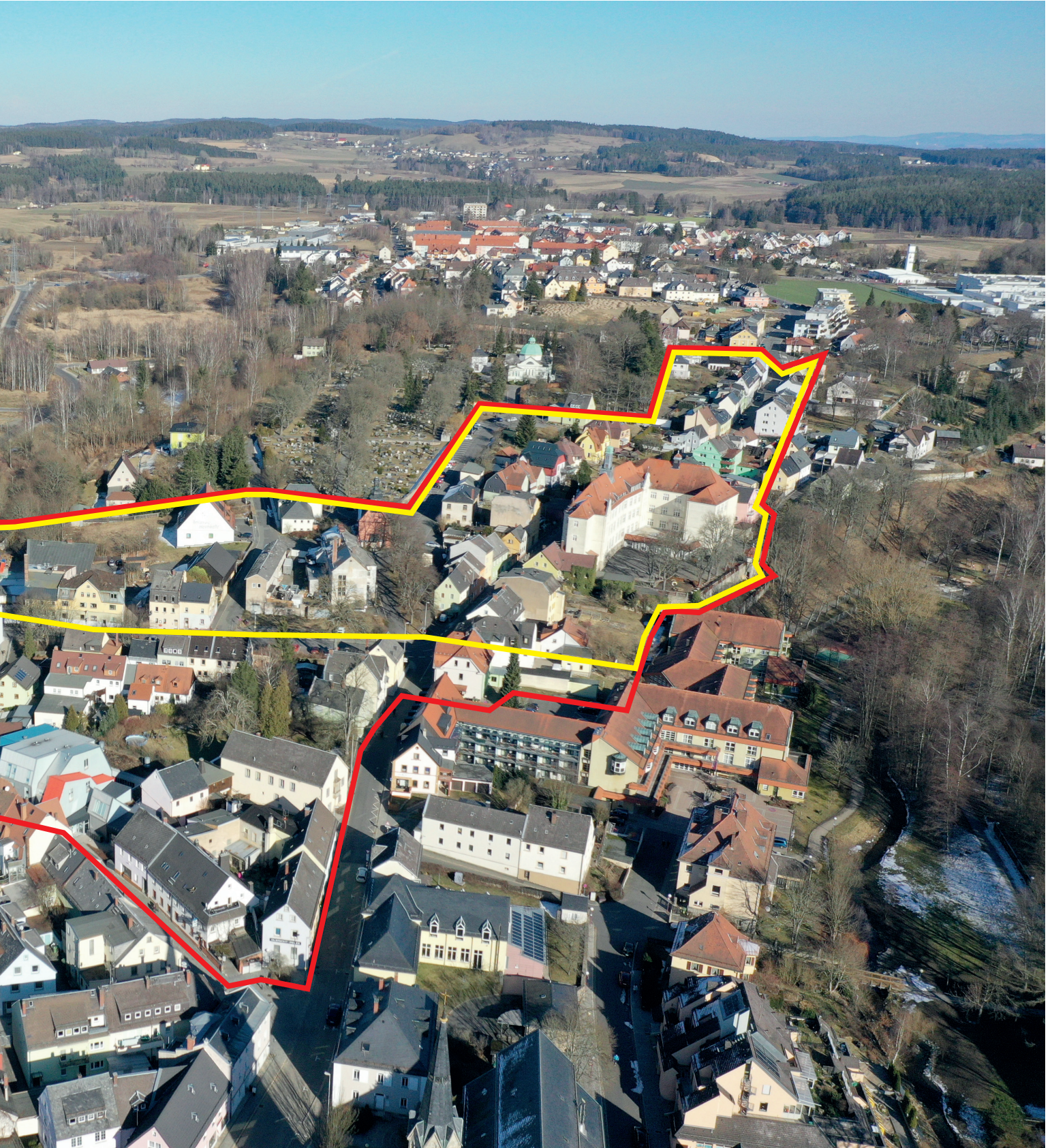




Abb. 16 Competition site









## Image Credits

Fig. 1  
Town of Selb in its regional context  
Florian Miedl Fotografie  
Archiv Stadt Landshut  
Bayerisches Landesamt für Statistik

Fig. 2  
Selb town centre  
Archive Town of Selb

Fig. 3  
The former NKD building before  
demolition  
Archive Town of Selb

Fig. 4  
Demolition of the NKD building  
Archive Town of Selb

Fig. 5  
Implementation of the first two  
construction phases  
Archive Town of Selb; architecture:  
Lara Freire Romero, Irene Climent  
Silvar, Iñigo Cornago Bonal, Antonio  
García Martos, Claudia Sánchez  
Fernández, Mario Vila Quelle

Fig. 6  
The House of the Childminders  
Archive Town of Selb; architecture:  
Julio de la Fuente, Natalia Gutiérrez,  
Alvaro Martín Fidalgo, Arantza  
Ozaeta

Fig. 7  
The House of Youth before  
remodelling  
Archive Town of Selb

Fig. 8  
Youth centre after completion  
FEIGFOTODESIGN

Fig. 9  
Draft of the re-use concept  
Scherben bringen Glück

Fig. 10  
Lorenz-Hutschenreuther-Straße 1  
Archive Town of Selb

Fig. 11  
Crossing Längenauer Straße –  
Lorenz-Hutschenreuther Straße  
Archive Town of Selb

Fig. 12  
View from Birkengasse at  
Krematoriumstraße  
Archive Town of Selb

Fig. 13  
Parking lot – Obere Bergstraße  
Archive Town of Selb

Fig. 14  
Lorenz-Hutschenreuther Straße  
Archive Town of Selb

Fig. 15  
Luitpold primary school  
Archive Town of Selb

Fig. 16  
Crossing Sedanstraße –  
Hartmannstraße –  
Von-der-Tann-Straße  
Archive Town of Selb

Fig. 17  
Competition site  
Archive Town of Selb

Abb. 18  
Competition site  
Klaus Leidorf  
Archive Town of Selb

## Imprint

Publisher  
Europäer – Deutsche Gesellschaft zur  
Förderung von Architektur,  
Wohnungs- und Städtebau e.V.  
Friedrichstraße 23A  
10969 Berlin  
Germany  
www.europäer.de

Editors  
Lola Meyer  
Vesta Nele Zareh

English Translation  
Amy Klement, Jonathan Lutes

Proofreader  
Kerstin Wieland

Graphic Design  
Christina Schmid and Simon Malz

Printer  
Offsetdruckerei Karl Gramlich

April, 2021



[www.europam.de](http://www.europam.de)

