

European 18

re-sourcing

Results



Table of contents

Map of Sites 6

Results

Towards Towards a Regenerative Sustaining of Inhabited Milieus 10
By Chris Younès (FR) and Didier Rebois (FR)

Re-Sourcing from Natural Elements

1/ Dealing With Water 20

Water Territories: From Resistance to Resilience 22
By Annelies De Nijs (BE) and Céline Bodart (BE)

Fumel (FR) 31
Winner From Rust to Roots 32
Special mention F3 La Fabrique Fertile de Fumel 34
Special mention La confédération des hexapodes 35

Jullouville (FR) 37
Runner-up De la Mare à la Manche 38
Runner-up Le climatorium des possibles 40
Runner-up The coastal sentinels 42
Special mention Épicentre d'intérêts 44

La Nive (FR) 45
Winner Ressources de la Nive 46
Runner-up Entraide 48
Runner-up Faire Terre la Nive 50
Special mention Le contrat moral de la Nive 52

Lisboa (PT) 53
Winner As Memórias da Água 54
Runner-up Cascata Urbana 56
Special mention A Place Called 'Growth' 58

Mantes-la-Jolie (FR) 59
Winner Ce(ux) qui reste(nt) 60
Runner-up LUEURS CONTAGIEUSES 62
Special mention Chronicles of a living Seine 64

Turku (FI) 65
Winner Landscape as a city – city as an island 66
Runner-up Wild Vähäheikkilä 68
Special mention Bäckbo 70
Special mention Vicus Selvaticus 71

2/ Reactivating Soils 72

Geographical Urbanism 74
From Soil to Groundswell: Emerging Landscape Processes
By Iñaki Alday (ES)

From Soil to Groundswell: Emerging Landscape Processes 78
By Miriam García García (ES)

Eslöv (SE) 83
Winner Life in Progress – Reincarnation of Bruksstaden 84
Runner-up Between the Walls 86
Special mention Ten Guidelines of Transformation 88

Genève (CH) 89
Winner La Parade du Vivant 90
Winner The Farandole of One Thousand Saplings 92
Special mention Genève, Paysage Exposé 94
Special mention VERTICAL Reforestation 95

Karlstad (SE) 97
Winner Hej Växnäs! 98
Runner-up Visions for Växnäs 100
Special mention A PATTERN FOR VÅXNÄS 102

Regensburg (DE) 103
Winner zam wachsn 104
Runner-up GreenCityPuzzle 106
Special mention Regensburger Nordstern 108

Speichersdorf (DE) 109
Winner Restorative Productive Space 110
Runner-up IDEENWERK – creative engine 112
Special mention In-Between cottage garden and orchard 114

St. Gallen (CH) 115
Winner Abbey in RE major 116
Winner Die den Gletscher bewohnen 118

3/ Regenerating Landscapes 120

The Optimism of Regenerating Landscapes 122
By Wim Wambecq (PT)

Amersfoort-Koppelbrug (NL) 131
Winner A Good Sport 132
Runner-up Assembly City 134
Special mention H.E.A.R.T.Y Hub 136

Barcelona-La Font del Gos (ES) 137
Runner-up De Pedres, Pans! 138
Runner-up Tuning la Font 140
Runner-up Volver a la Frontera/Barrio 142
Special mention I AM THIRSTY 144

Bregenz-Hard-Fussach-Höchst (AT) 145
Winner Recode the Road 146
Runner-up PINCH ME! L202 just woke up... 148
Runner-up The Landscape of Havens 150

Dembeni (FR) 153
Winner Racines et Horizons 154
Runner-up Four Rs for Dembeni 156
Special mention Chronicles of a living pact 158
Special mention Iloni Huju (the ascent of Iloni) 159

Nome (NO) 161
Winner The Mineral Network 162
Special mention A 100 Years Playbook 164
Special mention Green Mineral Park 165

Polignano a Mare (IT) 167
Winner The Rewilding Grounds 168
Runner-up LEARNING FROM POLIGNANO 170
Special mention Complementary Colours 172
Special mention Polymnia Futura 173

Santa Pola (ES) 175
Winner Water's journey 176
Runner-up panarchy cycles 3p4o 178
Special mention The Cape flows to the sea (and back again) 180

Re-Sourcing from Social Dynamics

4/ Inducing a Second Life 184

The New Normal for Elephants 186
By Julio de la Fuente (ES)

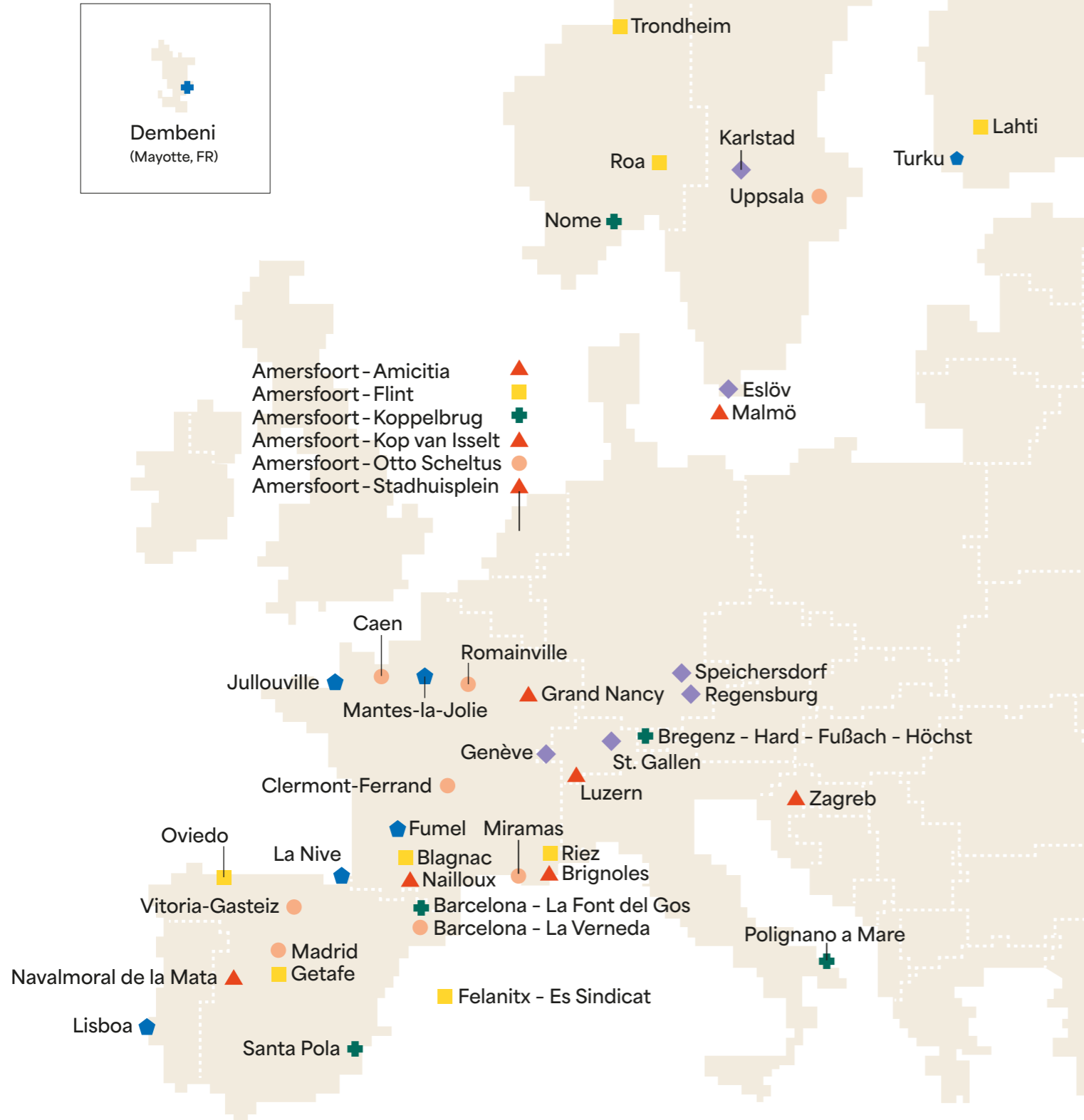
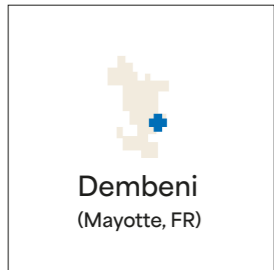
Transforming Ensembles: From Driving-Force to Driving-Source 190
By Bernd Vlay (AT)

Amersfoort-Flint (NL) 195
Winner Reverse Structuralism 196
Runner-up FlintKwartier: re-value, re-use, re-connect 198
Special mention CTRL ALT, FLINT! 200

Blagnac (FR) 201
Winner The Commons Laboratory 202

Felanitx-Es Sindicat (ES) 205
Winner REVIJURE ES SINDICAT 206
Runner-up La Fábrica del Paisaje 208
Special mention Ancorar. Un espai per a quasi tot 210
Special mention Mills to the Mountain 211
Special mention RELEARNING COEXISTENCE 212

Map of Sites



1 – Re-Sourcing from Natural Elements



Dealing with water

- Fumel (FR)
- Jullouville (FR)
- La Nive (FR)
- Lisboa (PT)
- Mantes-La-Jolie (FR)
- Turku (FI)



Reactivating soils

- Eslöv (SE)
- Genève (CH)
- Karlstad (SE)
- Regensburg (DE)
- Speichersdorf (DE)
- St. Gallen (CH)



Regenerating Landscapes

- Amersfoort - Koppelbrug (NL)
- Barcelona - La Font del Gos (ES)
- Bregenz - Hard - Fußbach - Höchst (AT)
- Dembeni (FR)
- Nome (NO)
- Polignano a Mare (IT)
- Santa Pola (ES)

2– Re-Sourcing from Social Dynamic



Inducing a Second Life

- Amersfoort - Flint (NL)
- Blagnac (FR)
- Felanitx - Es Sindicat (ES)
- Getafe (ES)
- Lahti (FI)
- Oviedo (ES)
- Riez (FR)
- Roa (NO)
- Trondheim (NO)



Promoting Open Neighbourhoods

- Amersfoort - Otto Scheltus (NL)
- Barcelona - La Verneda (ES)
- Caen (FR)
- Clermont-Ferrand (FR)
- Madrid (ES)
- Miramas (FR)
- Romainville (FR)
- Uppsala (SE)
- Vitoria-Gasteiz (ES)



Creating New Urban Relationships

- Amersfoort - Amicitia (NL)
- Amersfoort - Kop van Isselt (NL)
- Amersfoort - Stadhuisplein (NL)
- Brignoles (FR)
- Grand Nancy (FR)
- Luzern (CH)
- Malmö (SE)
- Nailloux (FR)
- Navalmoral de la Mata (ES)
- Zagreb (HR)

**re-
sourcing**

**from
natural
elements**

1. dealing with water



In context of global warming, to live and to re-dynamise inhabited milieus thanks to water is a strong driver for re-sourcing; crossing the challenge to adapt to risks (flooding, marine submersion, coastline withdrawal, drought...) and to restore ecological milieus to improve quality of life, health and joy of every day.

Fumel (FR) – Jullouville (FR) – La Nive (FR) – Lisboa (PT)
Mantes-La-Jolie (FR) – Turku (FI)

Water Territories: From Resistance to Resilience

By Annelies De Nijs (BE)

Urban designer, co-founder of Atelier Horizon – www.atelierhorizon.com
and lecturer at KASK School of Arts Ghent (BE)

And Céline Bodart (BE)

PhD Architect, lecturer at the Faculty of Architecture of Liege University (BE)
and at the Paris-la-Villette School of architecture (FR)

For too long, water has been approached in a singular way in our territories treating it as either a static ‘postcard’ aesthetic or a hidden, utilitarian backside of the city. This binary approach severed our understanding of water as a fundamental landscape system. To design in the face of contemporary climate instability, we must resource our relationship with the hydrological cycle, acknowledging it not as a decorative element, but as the primary geomorphological scaffolding of our territories. Re-centring water as a developmental driver moves us beyond mere mitigation. Here, valleys act as systemic backbones, watersheds define territorial cohesion, and rising sea levels shift from external threats to internal design parameters. Dealing with water through project-processes unfolds across three dimensions, which are 1) the landscape foundations, 2) the territorial solidarities, and 3) the living metabolisms. By unravelling these layers, we can move toward an urban design that does not merely manage water, but actively inhabits its logic.

1. LANDSCAPE FOUNDATIONS

To truly deal with water, a project must first engage with the site’s structural essence: its soil, topography, and geomorphology. By acting directly upon these landscape foundations, we can restructure the territory to accommodate new hydrological logics, such as increased infiltration or flood resilience. The landscape is not a passive stage, but an active guide. These reclaimed foundations become the primary framework for new development – housing, infrastructure, and recreation – effectively redrawing the territorial logic from the ground up. This shift from ‘site-as-surface’ to ‘site-as-system’ is vividly illustrated in several of the E18 projects.

Enhancing Exceptional Geographical Positions

Several E18 sites occupy singular landscape positions, inviting nuanced, integrated strategies for their evolution. Runner-up project *De la Mare à la Manche* in Jullouville (FR) (fig. 1) exemplifies this through a refined scalar shift. Tasked with rethinking a former vacation colony at the urban fringe, the team intentionally ‘steps back’ to re-situate the site within its broader hydrological context – reweaving

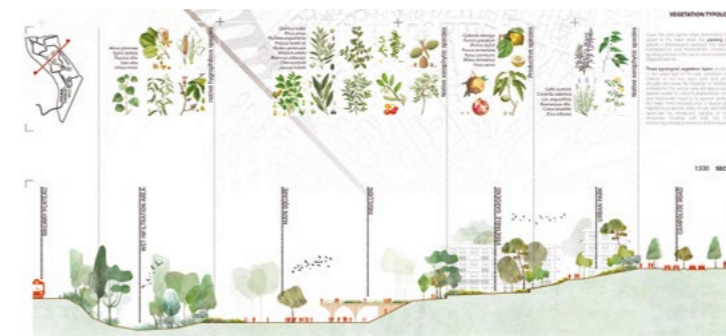


Fig. 2 – Lisboa (PT)
Winner
As Memórias da Água
→ See more P.xx

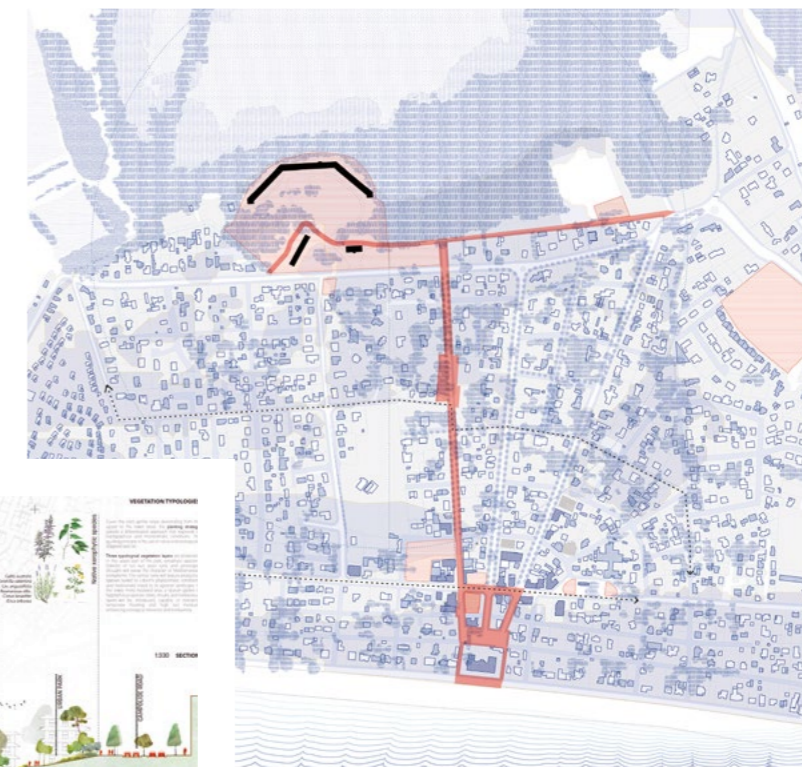


Fig. 1 – Jullouville (FR)
Runner-up
De la Mare à la Manche
→ See more P.xx



Fig. 3 – Fumel (FR)
Special mention
F3 La Fabrique Fertile de Fumel
→ See more P.xx



Fumel (FR)

How to activate industrial heritage through mixed and innovative programming that highlights existing resources?

Site Context

A key site of French steel production, this **vast industrial complex**, established in 1847, reached its peak in the 1970s when it employed over 3,000 workers daily. The following decades marked the beginning of difficulties for the factory, with restructurings and waves of layoffs before its **final closure in 2018**. The former factory **has shaped the history of Fumel in all aspects**. Its foundries animated the territory, altered the landscape, brought together communities of workers, and generated a local economy. Since 2008, the community of communes has owned the site and now aims to transform it and make the territory more attractive.

Questions to the competitors

How can we deal with a critical urban decline? How can we **make the area attractive again** by building on its specific characteristics? How can we **invest in a polluted site** while ensuring that it is transformed for the future? How can we **transform negative commons into a positive dynamic**? How can we turn a solar farm into an exemplary project that generates urbanity? How can the site's **memory be preserved as part of a new history**? How can we **reconnect the site with its environment and its elements**? How can we make this site a model of economic, social and environmental development that is exemplary and sustainable throughout the region?

Scales XL/L

Location Fumel

Population 5,154

Reflection site 770 ha

Project site 20 ha

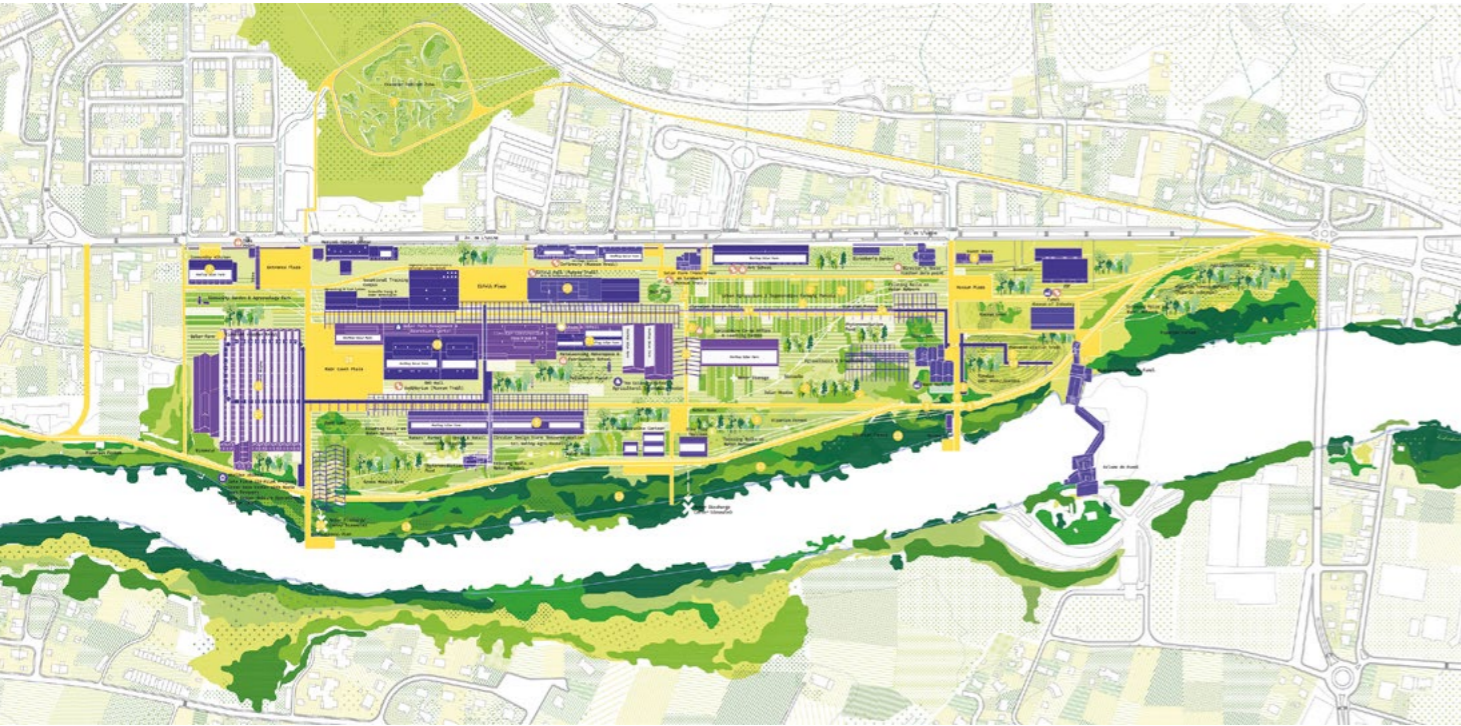
Site proposed by Architect and State Landscape Consultant

Actor(s) involved Community of Communes of Fumel,

Commune of Monsempron-Libos, DDT47, UDAP of Lot-et-Garonne, Region Nouvelle-Aquitaine, Banque des Territoires

From Rust to Roots

Team point of view | From Rust to Roots transforms Fumel's abandoned steelworks into a regenerative landscape where past and future converge. Through phased strategies of recognition, reclamation, and regeneration, the project heals polluted soils, restores biodiversity, and seeds new programs in energy, agriculture, and culture. It weaves together ecological renewal, heritage preservation, and social inclusion, turning a symbol of industrial decline into a vibrant commons and a model for resilient, hopeful futures.



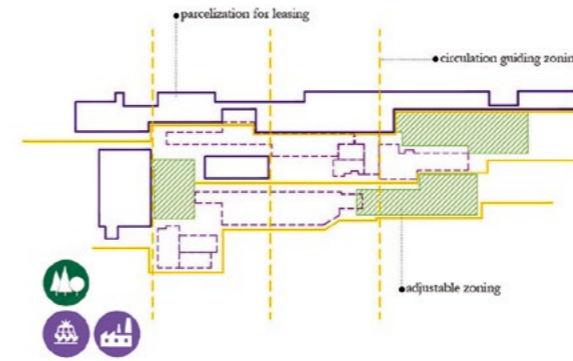
Author(s) –
Zuhal Kol (TR),
Carlos Zarco Sanz (ES),
Architects urbanists

Contributor(s) –
Berna Yaylılı (TR), Landscape architect;
Tuğçe Dilan Özdemir (TR),
Yasir Mahdi (TR), Architects

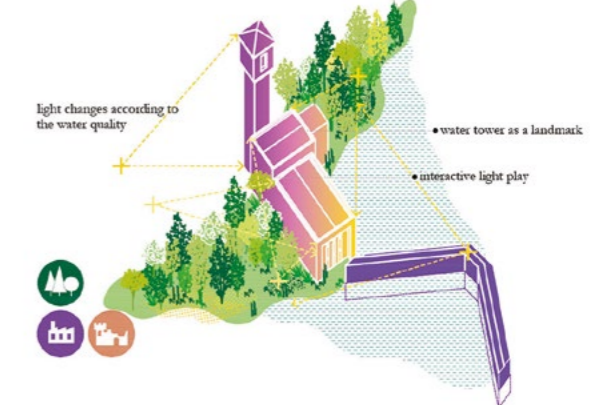
Contact –
zuhal@openact.eu
carlos@openact.eu
www.openact.eu

Jury point of view | The team envisions the former Fumel factory as a living, regenerative landscape. The project responds to post-industrial decline through an ecological, social, and cultural transformation, drawing on existing resources: the workers' collective memory, fertile soils, local biodiversity, and solar energy potential. The jury commends the project for its ability to address multiple issues and scales, but above all for its flexibility and adaptability over time, allowing for the gradual integration of resources from the site and the surrounding area.

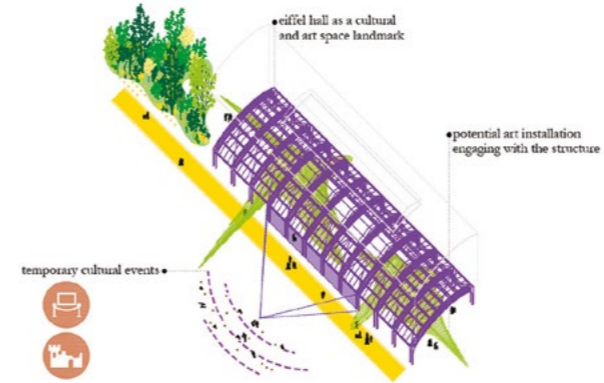
15. Adaptive Parcelization for Circular Leasing



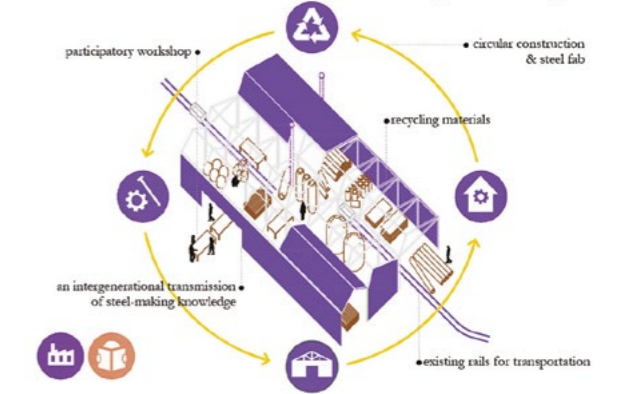
16. Interactive Water Tower Lighting Landmark



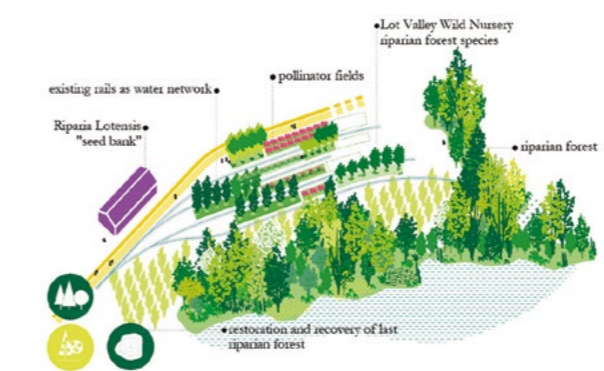
20. Eiffel Hall Cultural Activation Hub



21. Circular Steelcraft Knowledge Exchange



24. Riparian Nursery and Pollinator Corridor

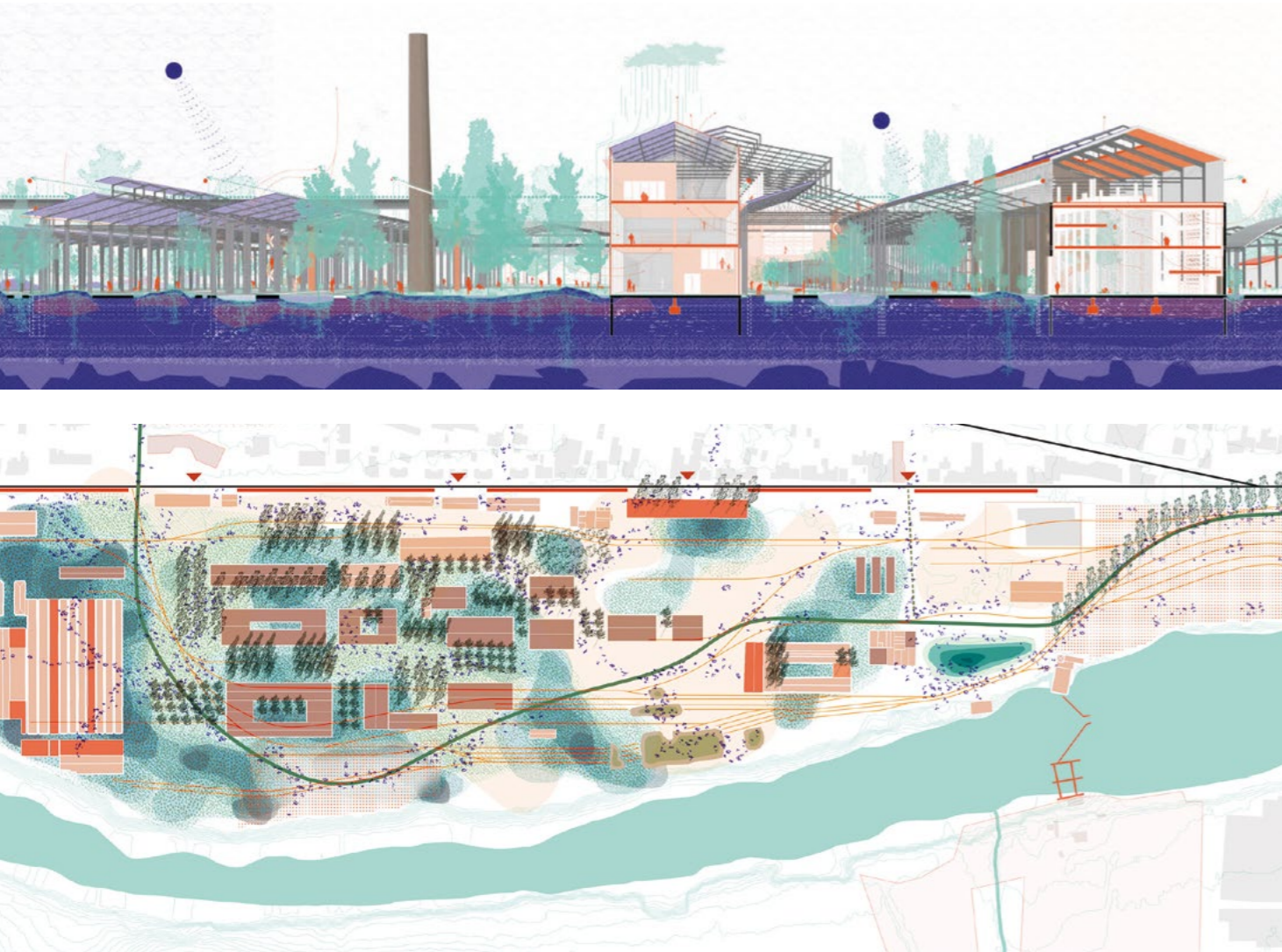


25. Activated Cultural Routes and Plazas



F3 La Fabrique Fertile de Fumel

Team point of view | The Fumel factory project, once a symbol of an industrial region, proposes a paradigm shift: moving from an iron factory to a living factory. The soil becomes the project's main resource, which must be understood, protected, and fertilised in order to reintroduce life. It is therefore defined as a common good, understood as an interface within the landscape that connects the actors of the territory, both human and non-human. The project reconnects with the productive and memorial function of the site, no longer through machinery, but through living organisms. Pollution, an unwanted legacy, becomes an unexpected resource. The acronym F3 sums up the project: Factory, a collective place that transforms the territory of tomorrow; Fertile, living soils to produce; Fumel, a local history to be reactivated.

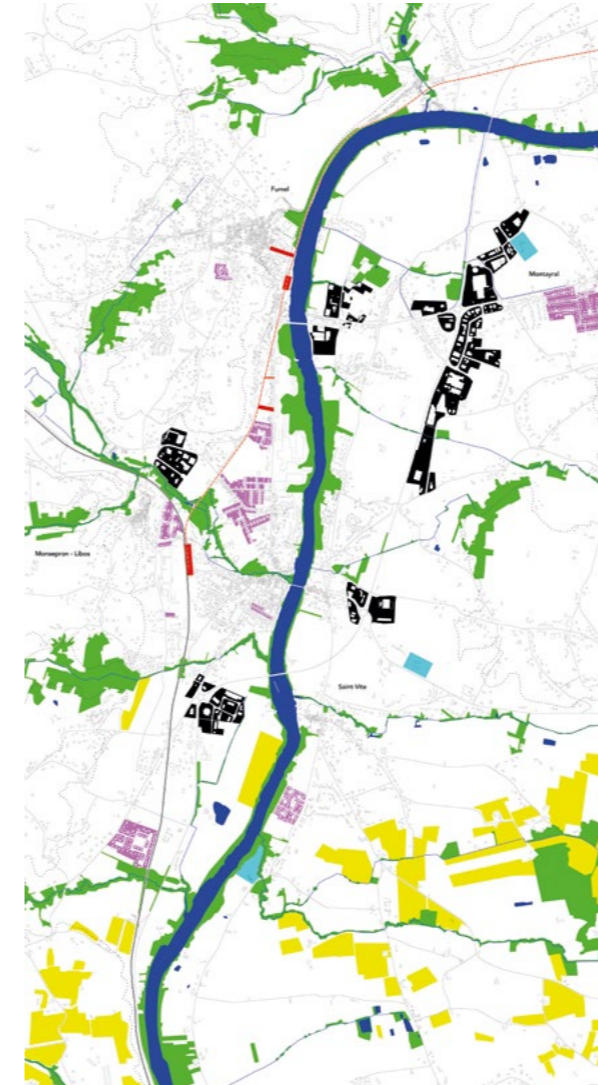


Author(s) –
Rafael Comby (FR), Architect, urbanist;
Leon Giseke (DE), Maria-Elena Laghi (IT),
Landscape architects;
Arnaud Laval (FR), Landscape architect, urbanist

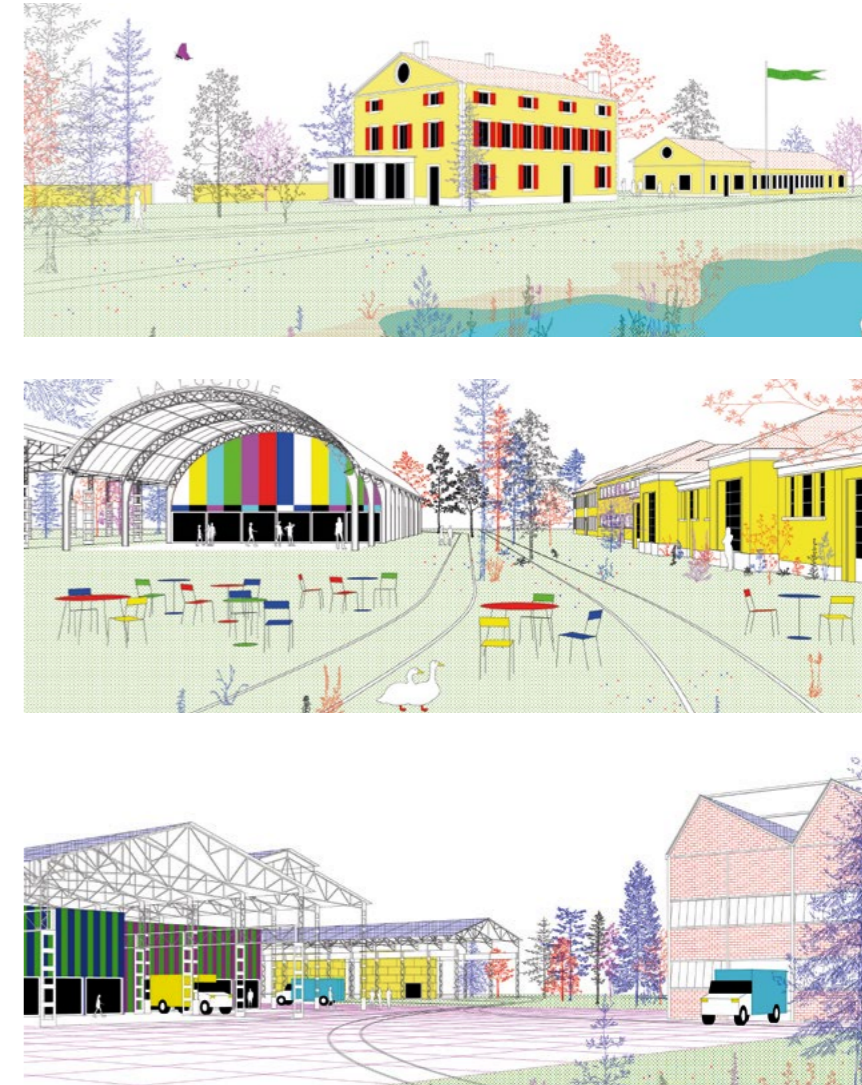
Contact –
rafaelcomby.aup@gmail.com

La confédération des hexapodes

Team point of view | Due to the site's unique relationship with the Lot Valley and its ecotone, the riparian forest, hexapods are the main focus of this project, a vector for the site's revival. It aims to revitalise the valley's biodiversity through this spectrum and introduce a virtuous dynamic centred on life on the former metallurgical wasteland. The hexapod theme serves as a pretext for addressing, more generally, the need to reconnect human uses and biodiversity, a territory's primary resource. The rehabilitation of the former metallurgical plant is approached like a giant pergola, blending biodiversity with heritage. New, innovative programs are emerging related to insects.



Author(s) –
Jean-Baptiste Lescudé (FR),
Architect, urbanist



Contact –
jb.lescude@gmail.com

**re-
sourcing**

**from
social
dynamics**

4/ inducing a second life

The 'multiple heritage' of derelict buildings provides a precious source for a larger urban transformation, which is launched by interventions that operate first in the scale of the site itself. Integrating social and cultural traces in the sites' geographical and physical rehabilitation enables an upscaling of the transformation's impact. It can induce a second life whose urban energy radiates far beyond its physical limits.

Amersfoort - Flint (NL) – Blagnac (FR) – Felanitx - Es Sindicat (ES)
Getafe (ES) – Lahti (FI) – Oviedo (ES) – Riez (FR)
Roa (NO) – Trondheim (NO)

The New Normal for Elephants

By Julio de la Fuente (ES)

Architect, urban planner, co-founder
of Gutiérrez-de-laFuente Arquitectos in Madrid
www.gutierrez-delafuente.com

A compilation of E18 rewarded proposals offers new readings of a multilayered heritage of derelict buildings – we call them *elephants* because of their big scale in comparison with their surroundings – embedded in our cities and villages. These *elephants* provide a valuable source for a larger urban or rural transformation, as shown in the Flint theatre in Amersfoort (NL), the Orange Campus in Blagnac (FR), the Winery Es Sindicat in Felanitx (ES), the bullring of Getafe (ES), La Malatería healthcare facility in Oviedo (ES) or the Entre-Lacs obsolete industrial buildings in Mantes-la-Jolie (FR).

The comparative analyses at European scale allow the transition from the local conditions to the common strategies, sharing visions on how to implement them. But which kind of strategies can infill new uses throughout time and reconnect these *elephants* with the territorial resources? And regarding the resources on-site, how can circular principles become the driver of a minimum-footprint reuse?

TIMELINESS FRAMEWORKS

On some sites, the goal is to offer credible uses for the future conversion of an obsolete building as an early stage of urban evolution. But this is not so evident nowadays with the political and economic atmosphere of uncertainty. There is an interesting trend in some of the proposals to manage these conditions, suggesting a concept of timeliness as an essential strategy for reusing.

In Amersfoort-Flint (NL), winning proposal *Reverse Structuralism* (fig. 1) is giving a new life to a theatre complex through a three-dimensional framework anchored to the structuralist concept of the original scheme. This super-grid is a permeable device to open-up the complex, inviting public space to colonise the former cultural building and giving room for future uses in an open-ended evolution: reusing, not as a finished product, but as a platform for action.

In Mantes-la-Jolie (FR) another kind of *elephant*, an industrial one, is located on a wasteland nestled between two lakes. Runner-up entry *LUEURS CONTAGIEUSES* (fig. 2) offers a long-term transformation process as a fantastic narrative of potential situations based on three different steps – incubations, contagions, disseminations – embracing the



Fig. 1 – Amersfoort-Flint (NL)
Winner
Reverse Structuralism
→ See more P.XX

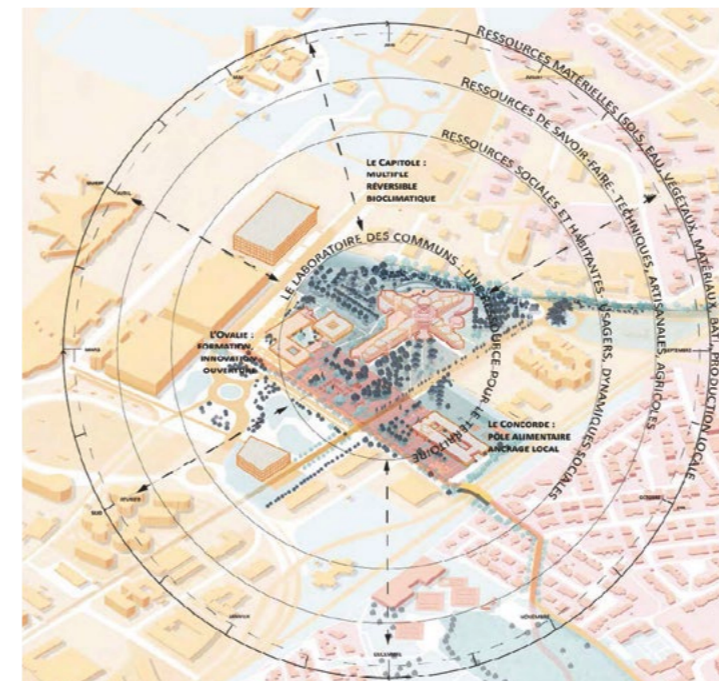
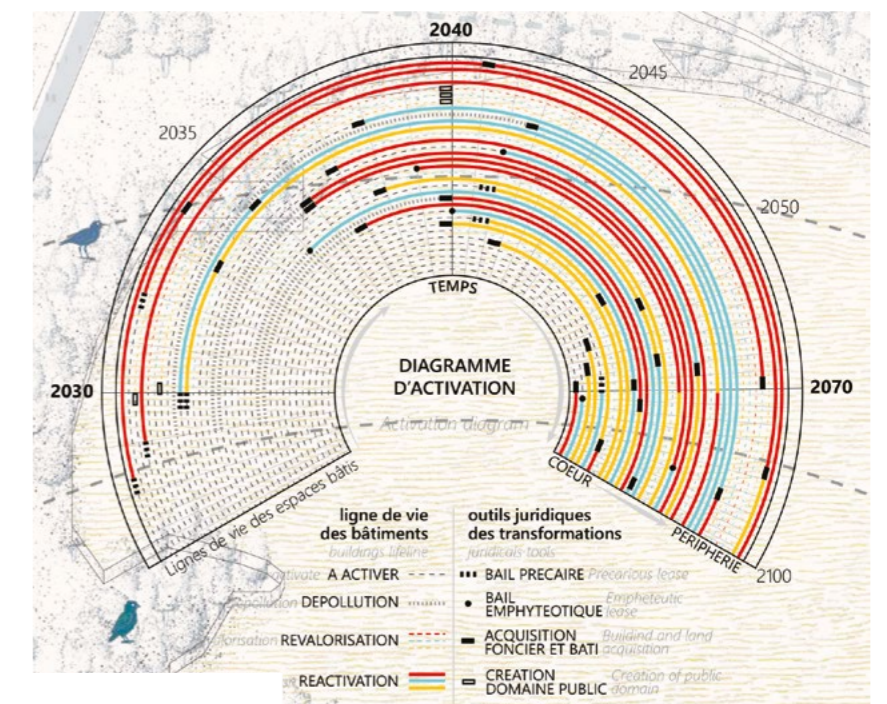


Fig. 2 – Mantes-la-Jolie (FR)
Runner-up
LUEURS CONTAGIEUSES
→ See more P.XX

Fig. 3 – Blagnac (FR)
Winner
The Commons Laboratory
→ See more P.XX



Amersfoort- Flint (NL)

How to create a vibrant, inclusive, multi-functional facility?

Site Context

The City of Amersfoort is re-imagining urban life at Flint, **transforming this currently inward-facing building** into an open, dynamic, and locally integrated space – a welcoming ‘central living room’ for all. A space where individuals from diverse backgrounds can come together, fostering connections through a wide range of cultural, social, and recreational activities. This transformation **prioritises multi-functionality, adaptability and a meaningful relationship** with its urban environment materially and socially. By aligning the building’s functionality with contemporary needs, Flint seeks to position itself as a **landmark** that stimulates **creativity** and encourages **collaboration**. Think of a new and strong program for this location that can contribute to a vibrant city and be a meeting place for a wide range of users and visitors.

Questions to the competitors

How to create a vibrant, inclusive multi-functional building, a space where **innovation and creativity converge to connect a diverse, multi-generational community**? How to envision a place that fosters collaboration and inspiration through a strong and new cohesive commercial and/or social program? Guided by principles of transparency and openness, how to propose transformation which **embrace the building’s original design**? Principles including its flexible grid, internal street, and multi-purpose spaces. How to enhance the principles of its structuralist design to **foster adaptability and sustainability**?

Scales L/S

Location Flint, Amersfoort

Population 160,000

Reflection site 3.35 ha

Project site 1.49 ha

Site proposed by Amersfoort Municipality

Actor(s) involved Amersfoort Municipality

Reverse Structuralism

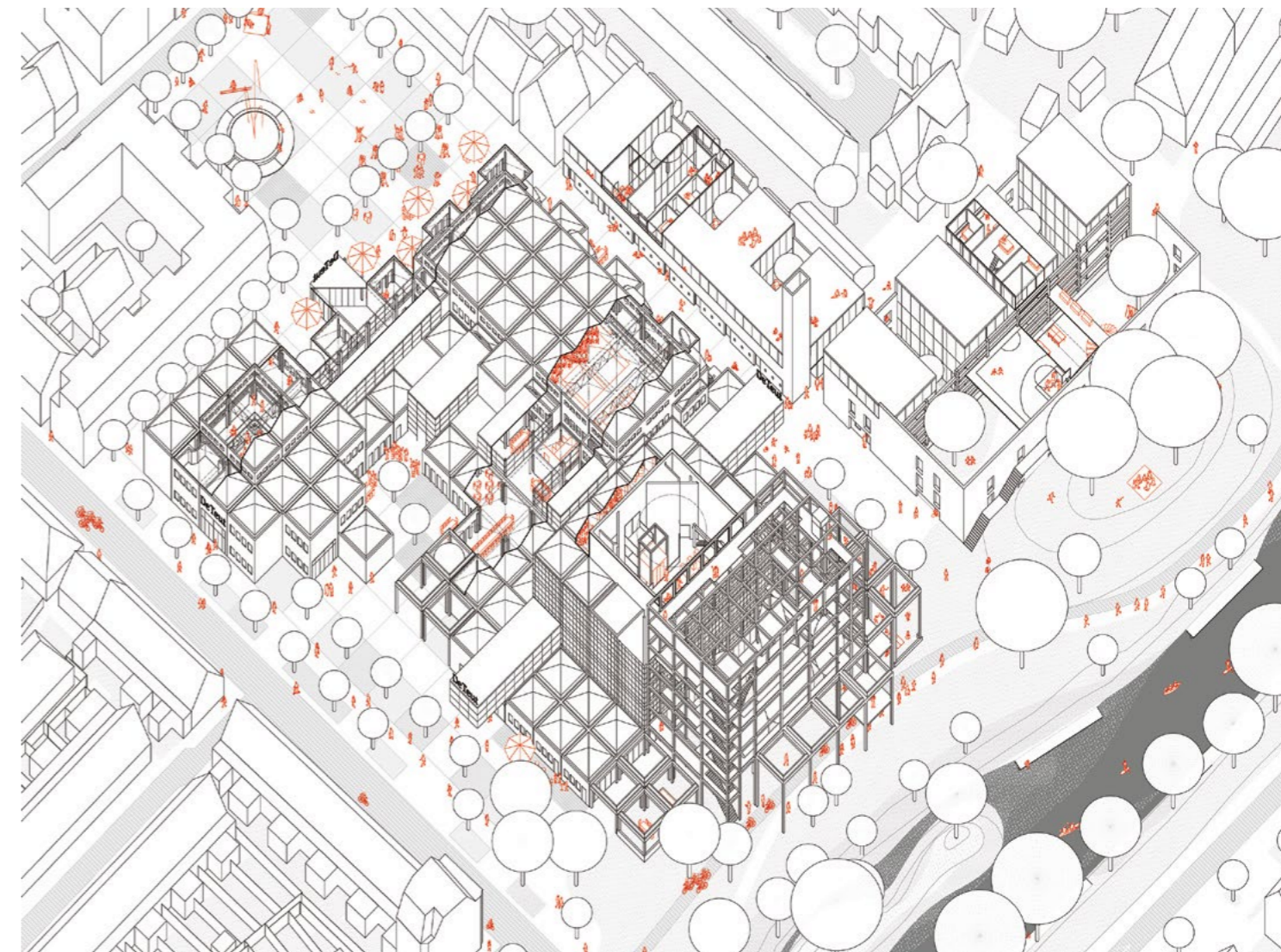
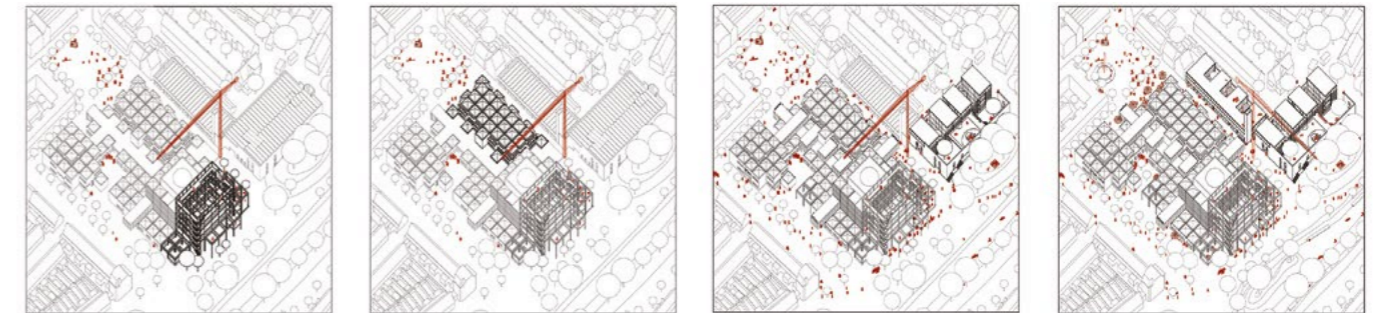
Team point of view | The city is never finished. Culture is not a product. And space belongs to everyone. We don't need a landmark, but a commons. In Amersfoort, we propose to transform the structuralist cultural centre – once a 'play cave for everyone' – into an open framework of possibilities. What became mono-functional through DeFlint Theatre will be reversed. Minimal interventions reactivate the building: not demolished, but re-read and re-used. A place shaped by use. Not a fixed image of the future, but a spatial toolset – a collective foundation for a cultural ecosystem growing from within.



Author(s) –
Paul Moritz Keul (DE),
Gabriel Deliancourt (DE),
Architects

Contact –
reverse-structuralism@web.de

Jury point of view | The designers take the structuralist concept of the original scheme as their starting point and build on it for the future transformation of the site. The proposal reorganises the site's messy expanse by defining three distinct yet complementary entities: the transformed Flint complex and two former car parks redeveloped as independent building blocks. Together, they form a coherent and diverse new piece of city – an urban collage where variety produces unity.



FlintKwartier: re-value, re-use, re-connect

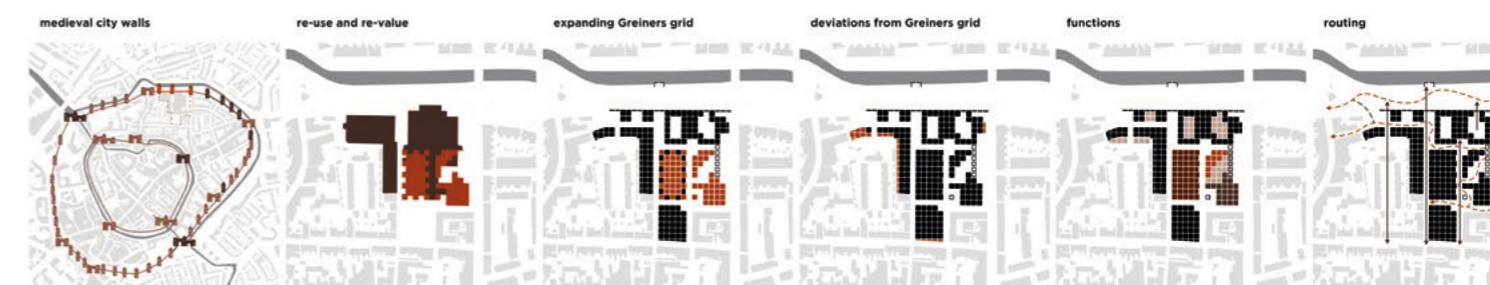
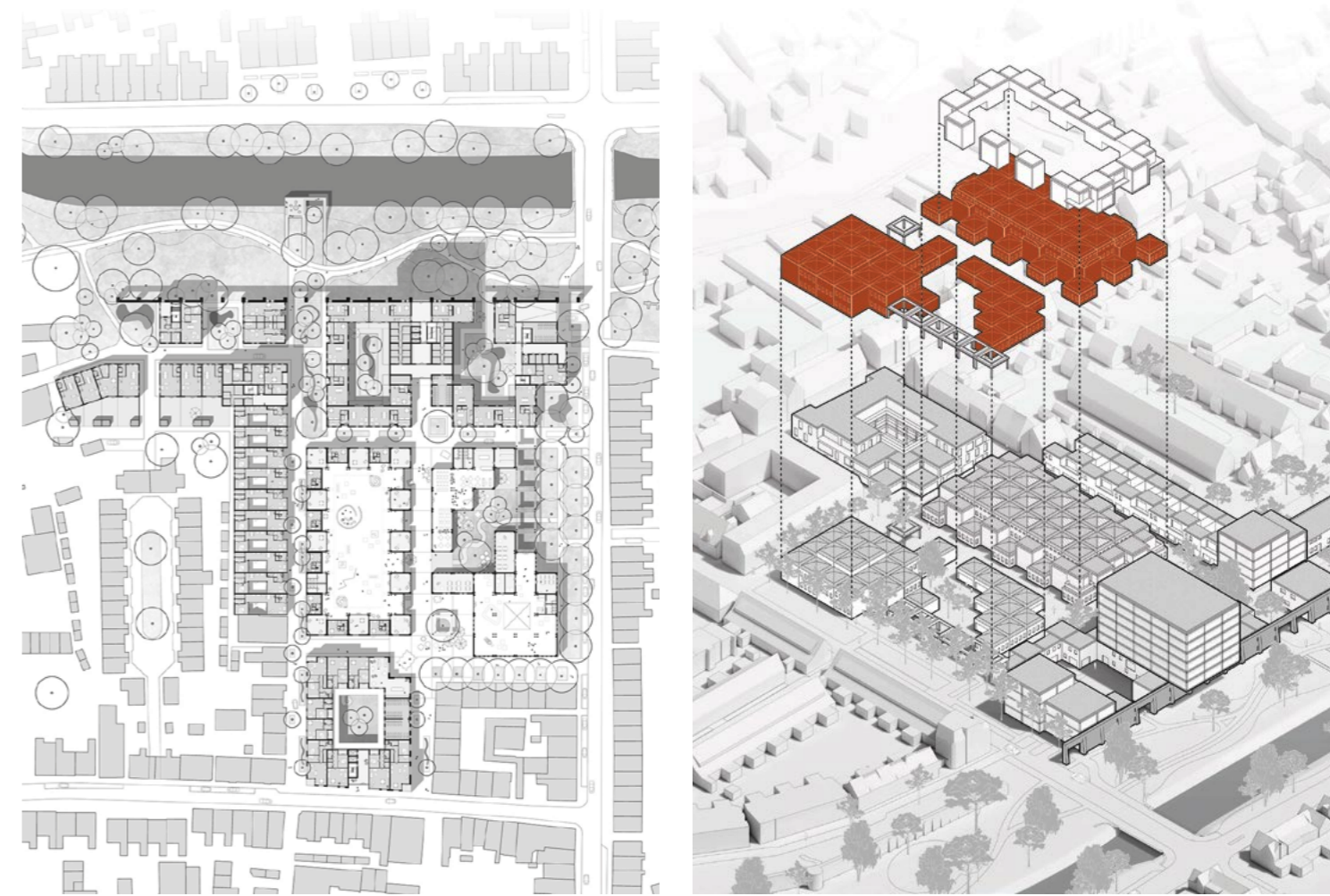
Team point of view | The Flint theatre is a dissonant building complex in the old inner city. It is designed by Onno Greiner following a grid system. The cultural complex is inward-looking and poses a challenge for transformation should its theatre function be discontinued. This project proposes turning the entire complex inside out and breaking it up, allowing it to blend into the morphology and atmosphere of the inner city. It focuses on revaluing, reusing, and reconnecting the existing grid structure to address future challenges, such as adding housing and improving the inner city's attractiveness. It includes diverse living spaces, atelier and maker spaces, shared facilities, and green pedestrian-friendly public spaces, enhancing social diversity and urban connectivity.



Author(s) –
Thomas Rosema (NL), Architect;
Remon Mulder (NL), Urbanist

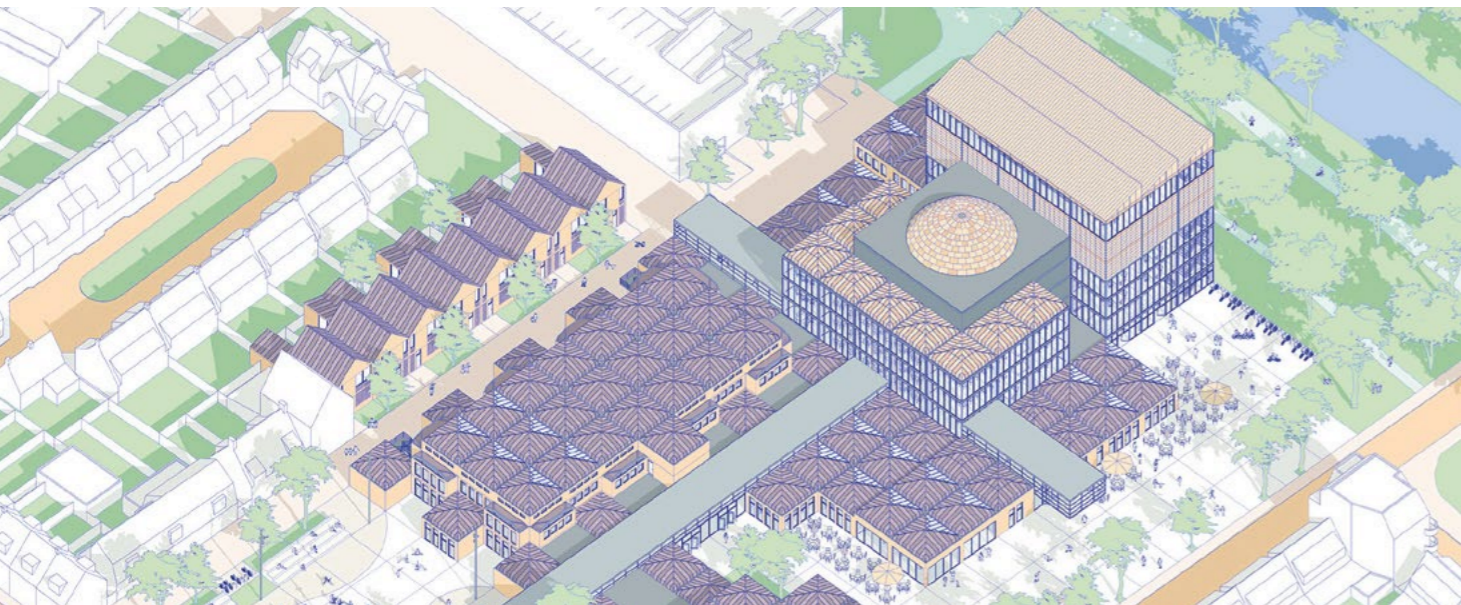
Contact –
Rotterdam (NL)
info@rosema.eu
www.rosema.eu

Jury point of view | Programmatically, this project chooses to focus almost entirely on housing while transforming the existing complex into a fine-grained urban fabric of streets, alleys, and small squares. The intervention is radical, yet it maintains the spirit of the original structure. The result is a picturesque new urban quarter that integrates smoothly with the neighboring residential districts on both sides of the current Flint site. The project proposes to rework the riverside park edge: a separate strip of buildings, punctuated by a rotated tower volume, establishes a new architectural identity that breaks with the dominant image of the old theatre block.



CTRL ALT, FLINT!

Team point of view | CTRL ALT, FLINT! reinvents the former theatre as an open, inclusive, and adaptable structure. The project reveals the potential of the existing building through a frugal and circular approach: improved circulation flows, opened façades toward the city and green belt, reuse of reclaimed materials from partial deconstruction. It hosts a wide range of uses including shared workspaces, creative studios, teaching restaurant, indoor and outdoor performance stages as well as housing for families and artists. This hybrid space fosters synergies between culture, learning, daily life, and social innovation. Conceived as a living urban tool, continuously accessible and active, Flint becomes a catalyst for connection, serving the inhabitant and supporting Amersfoort's urban transition.



Author(s) –
Lucas Carrio (FR), Hans Prieur (FR),
Kimberley Bellamy (FR), Architects

Contact –
Lille (FR)



Blagnac (FR)

How can a tertiary obsolete site be reused as a hybrid open space at the heart of the airport park?

Site Context

Located west of Blagnac, between the Voie Lactée (RM 902) and Toulouse-Blagnac Airport, the Orange Campus site is one of the emblematic landmarks of this aeronautical economic hub, which hosts the highest concentration of corporate real estate in the metropolitan area. The competition seeks to explore the full range of possibilities for repurposing this built ensemble, envisioning a broader urban, landscape, ecological, and environmental transformation of the district. As a pilot site for building reuse and soil renaturation, the Orange Campus offers a unique opportunity to develop innovative strategies for adapting existing structures – whether through reuse, rehabilitation, or deconstruction. The project aims to introduce a diversification of urban functions oriented toward innovation and shared services (education, co-working, mutualised services...) while ensuring its long-term evolution. By leveraging the site's resources, the challenge is to reimagine economic zones that are more sustainable, resilient, and environmentally responsible.

Questions to the competitors

In the economic context of the airport sector, how can this tertiary architectural heritage be adapted, reshaped, recycled, and repurposed while leveraging the intrinsic qualities and resources of the existing structures? What strategies can foster a diversification of uses oriented towards innovation and shared functionalities? How can the site be opened to its surroundings, re-establishing physical, functional, and symbolic connections with the broader territory? What strategies can be implemented to regenerate soils and initiate a new way of inhabiting economic districts?

Scales XL/L

Location Blagnac, Toulouse Métropole

Population 27,000

Reflection site 100 ha

Project site 9 ha

Site proposed by Blagnac municipality

Actor(s) involved Blagnac municipality, Icade, Urbain des Bois, Banque des Territoires

Owner(s) of the site private owner
(possible acquisition by the municipality)

E18 juries presentation

Deutschland

Urban/architectural order



Dr. Elisabeth Merk (DE) [Jury President]

City Building Councillor of the provincial capital Munich, Munich (DE)

www.stadt.muenchen.de

www.professoren.tum.de



Theresa Keilhacker (DE)

President of the Berlin Chamber of Architects, Kazanski. Keilhacker Urban Design Architektur, Berlin (DE)

www.urbandesign-architektur.com

www.ak-berlin.de

Urban/architectural design



Nikolaus Hirsch (BE)

Artistic Director of the CIVA Architecture Museum, Brüssel (BE) – www.v-a-i.at



Julio de la Fuente (ES)

Architect, urbanist, Partner at Gutiérrez-de la Fuente Arquitectos, Madrid (ES)

www.gutierrez-delafuente.com



Andrea Klinge (DE)

Architect engineer, Professor of Construction and Design at the KIT and for Circular Construction at the HABG, Berlin/Karlsruhe (DE) / Basel (CH) – www.zrs.berlin

www.fhnw.ch / www.arch.kit.edu



Anna Lundquist (DE)

Professor of Landscape Architecture at the Brandenburg University of Technology Cottbus-Senftenberg, Man Made Land, Berlin (DE)

www.manmadeland.de / www.b-tu.de

Public figure



Kaye Geipel (DE)

Architecture critic, urbanist and curator, 2010-22 deputy editor-in-chief of Bauwelt magazine, Berlin (DE) / Brüssel (BE)

Substitute



Ingrid Sabatier (DE)

ISSS research | architecture | urbanism, Berlin (DE) – www.issresearch.com



Tobias Hömig (DE)

Professor of Building Theory and Design at the New School of Architecture at the University of Siegen and Studio CO NOW GmbH, Berlin / Siegen (DE) – www.co-now.eu

www.architektur.uni-siegen.de

España/Portugal

Urban/architectural order



Iñaki Carnicero (ES)

General secretary, Ministry of Housing and Urban Agenda, Madrid (ES)

www.mivau.gob.es



Xavier Monteys (ES)

Architect, professor, Barcelona (ES)

www.cccb.org

Urban/architectural design



Fernanda Canales (MX)

Architect, Mexico (MX)

www.fernandacanales.com



Ana Luisa Soares (PT)

Architect, Porto (PT) / Lausanne (CH)

www.falaatelier.com/



Nader Tehrani (US)

Urban Planning and Design, Boston (US)

www.nadaaa.com



Pascale Hannetel (FR)

Landscaper, Paris (FR)

www.hyl.fr



Débora Mesa (ES) [Jury President]

Architect, Madrid (ES)

www.ensemble.info



David Lorente (ES)

Architect, Sabadell (ES)

www.harquitectes.com



Rui Florentino (PT)

Architect, Professor at Portucalense University, Department of Architecture and Multimedia Gallaecia, and Researcher in the UPT branch of CIAUD, in urbanism and planning / appointed by the Ordem dos Arquitectos, Porto (PT)

Public figure



Fabrizio Gallanti (IT)

Curator and architect, director of arc en rêve, centre d'architecture, in Bordeaux (FR)

www.arcenreve.eu

Substitutes



Catalina Salvà (ES)

Architect, winner in European 14, 15, 17, Barcelona / Lluçmajor (ES)

www.salvaortin.com



António Laúndes (PT)

Architecte, Ordem dos Arquitectos, Lisbon (PT)

E18 European Secretariats

European DEUTSCHLAND

Friedrichstraße 23 A
10969 Berlin – Germany
mail@european.de
www.european.de

European ESPAÑA

Paseo de la Castellana, 12
4º planta, derecha
28046 Madrid – Spain
european.esp@cscae.com
www.european-esp.es

European FRANCE

39 Bd de Magenta
75010 Paris – France
contact@europeanfrance.org

European HRVATSKA

c/o Ministry of Construction
Republike Austrije 20
10000 Zagreb – Croatia
info@european.hr
www.european.hr

European ITALIA

c/o Consiglio Nazionale Architetti PPC
Via Santa Maria dell'Anima 10
00186 Roma – Italy
contact@european-italia.eu
www.european-italia.org

European NEDERLAND

c/o URBANOFFICE Architects
Amsteldijk 83-2
1074JB Amsterdam – Netherlands
e18@european.nl
www.european.nl

European NORGE

Møllendalsveien 17
5009 Bergen – Norway
post@european.no
www.european.no

European ÖSTERREICH

Mariahilferstrasse 93/1/14
1060 Wien – Austria
office@european.at
www.european.at

European PORTUGAL

Travessa do Carvalho 23
1249-003 Lisboa – Portugal
celia.faria@ordemdosarquitectos.org

European SUISSE

Werkhofstrasse 11
2503 Biel – Switzerland
bureau@european.swiss
www.european.ch

European SUOMI-FINLAND

Hämeentie 19 A
00500 Helsinki – Finland
info@european.fi
www.european.fi

European SVERIGE

c/o Asante Architecture & Design
Brännkyrkagatan 98
117 26 Stockholm – Sweden
info@european.se
www.european.se

European EUROPE

39 Bd de Magenta
75010 Paris – France
contact@european-europe.eu
www.european-europe.eu

Credits

EUROPAN 18 RESULTS

This book is published in the context of the eighteenth session of European

Head of publication

Didier Rebois – Secretary General of European

Editorial secretary

Françoise Bonnat – responsible of the European publications

Authors

Iñaki Alday – Architect, co-founder of aldayjover architecture and landscape (ES/US), Dean at Tulane School of Architecture and Built Environment (US)

Carlos Arroyo Zapatero – PhD Architect, urbanist, linguist, founder of Carlos Arroyo Arquitecto, teacher in Madrid's Universidad Europea (ES), European Scientific Committee member

Céline Bodart – PhD Architect, lecturer at the Faculty of Architecture of Liege University (BE) and at the Paris-la-Villette School of Architecture (FR), European Technical Committee member

Annelies De Nijs – Urban designer, co-founder of Atelier Horizon, lecturer at KASK School of Arts Ghent (BE), European Scientific Committee member

Julio de la Fuente – Architect, urbanist, co-founder of Gutiérrez-delaFuente Arquitectos, Madrid (ES), European Technical Committee member

Miriam García García – PhD Architect, landscape architect, urbanist, co-founder of Landlab, professor, Barcelona (ES), European Scientific Committee member

Didier Rebois – Architect, Secretary General of European, coordinator of the Scientific Committee, Paris (FR)

Nicolás Martínez Rueda – Architect, founder of DOCEXDOCE Architecture Competition for students, Barcelona (ES), European Technical Committee member

Socrates Stratis – PhD Architect, urbanist, co-founder of AA&U and LUCY director, Professor, Dpt. Architecture, Univ. of Cyprus, Nicosia (CY), European Scientific Committee member

Dimitri Szuter – PhD Architect, researcher and performer. Founder of P.E.R.F.O.R.M! (FR), European Technical Committee member

Bernd Vlay – Architect, teacher, researcher, co-founder of StudioVlayStreeruwitz, president of European Österreich, Wien (AT), European Scientific Committee member

Wim Wambecq – Architect, assistant Professor, Researcher URBinLAB in Lisbon (PT), founding partner Midi (BE/PT)

Chris Younès – Anthro-philosopher, professor at the ESA school of architecture. Founder and member of the Gerphau research laboratory, Paris (FR), founder and member of ARENA, European Scientific Committee member

English translation / proofreading

Frederic Bourgeois

Graphic design and layout

Radiographique
Léa Rolland & Redouan Chetuan
www.radiographique.com

Printing

UAB Balto print (Vilnius, Lithuania)

Edited by

European Europe
Paris, France
www.european-europe.eu